

ART FAIR



City of Somerville

Joseph A. Curtatone, Mayor

Alderman J.T. Scott

Project Team

Robert King - Director of Capital Projects

Brad Rawson - Director of Transportation & Infrastructure

Rich Raiche - Director of Engineering

Gregory Jenkins - Executive Director, Somerville Arts Council

Project Managers:

Luisa Oliveira—Parks & Open Space

Rob Cassano—Capital Projects

Jess Fosbrook— Engineering



Architecture



Bruner/Cott

architects and planners

Landscape Architecture

GROUNDVIEW

Mechanical Engineering



Structural Engineering

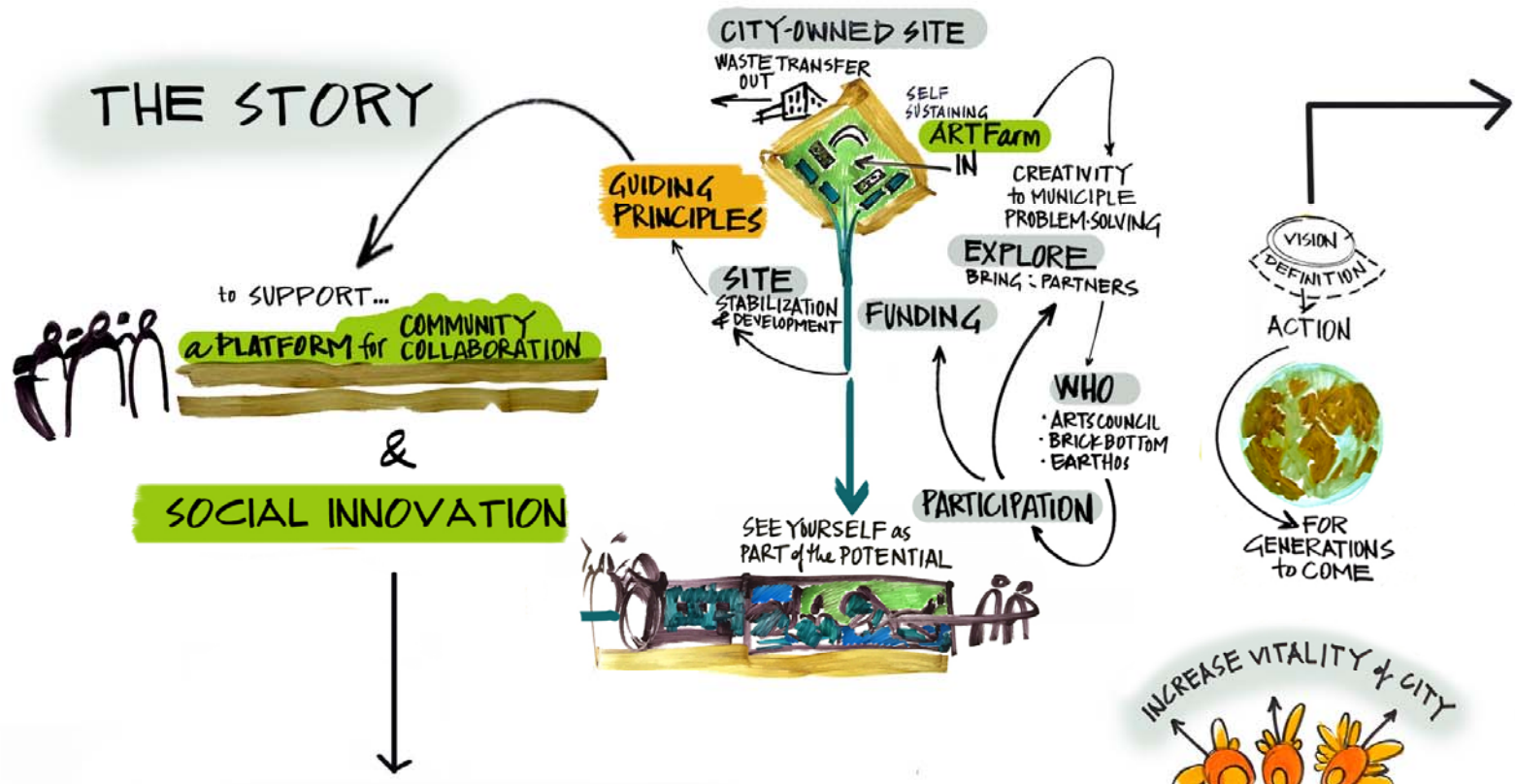
Simpson Gumpertz & Heger

Economic Consulting

Consult Econ

What is ArtFarm?

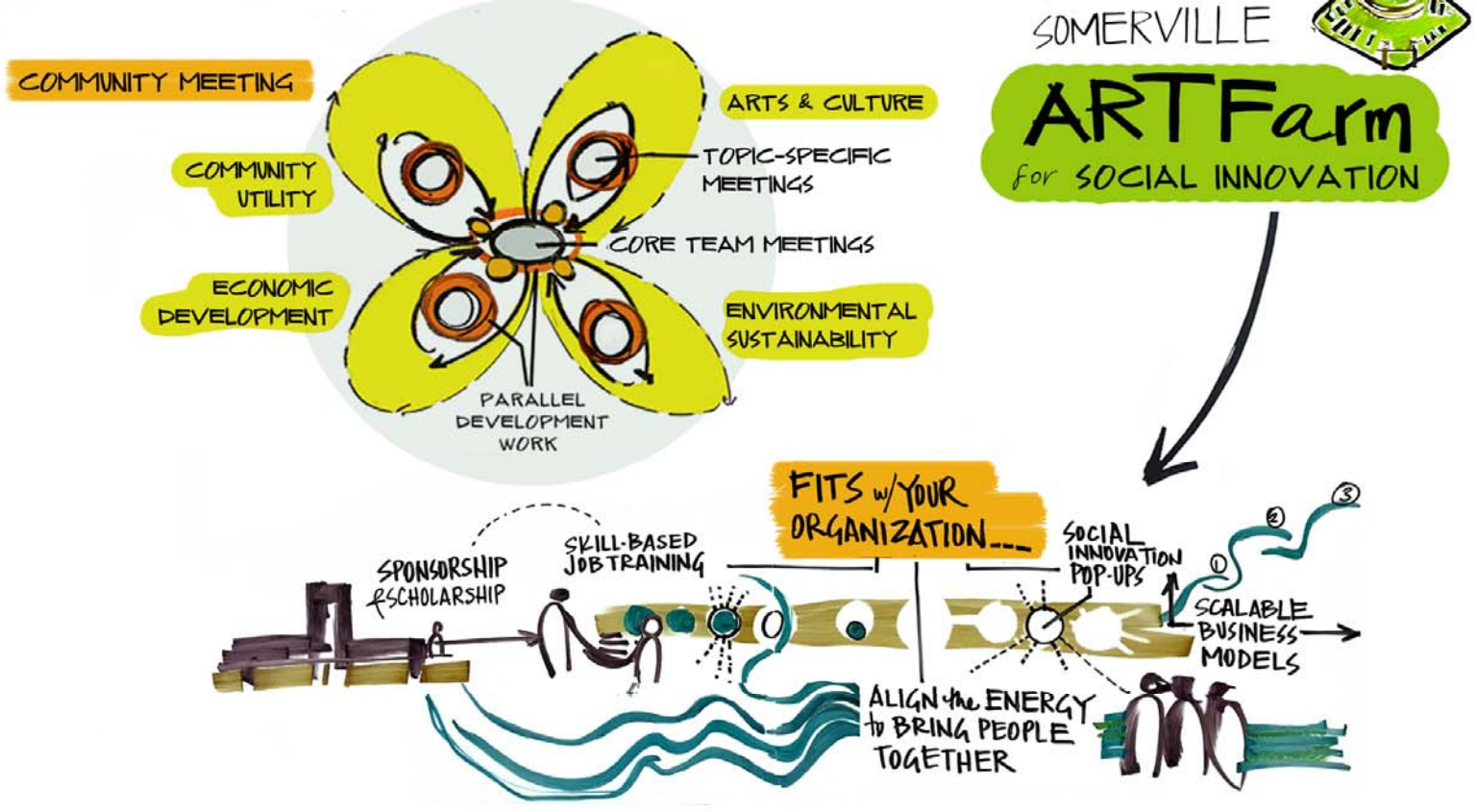




PROPOSED GUIDING PRINCIPLES

- ACCESSIBLE:**
a year-round, informal, eclectic, welcoming, and engaging atmosphere
- TRANSPARENT:**
open decision-making processes, organizational structure, and methods of sharing
- INCLUSIVE:**
for all types of people & walks of life
- WE > ME:**
lack of ego in service of the whole
- PEOPLE > PROFIT:**
non-traditional ways of measuring success, with the motto "Pay it Forward"
- SUSTAINABLE, HOLISTIC APPROACH:**
self-sufficient, bio-diverse, regenerative, zero-carbon, waste free, with green technology and productive landscapes
- RISK TAKING:**
re-inventive, taking chances and pushing boundaries within agreed parameters (some areas enforced & some area free range) - as part of the organizational dna
- EDUCATIONAL:**
leadership development through year-round programming that encourages curiosity
- PART OF URBAN FABRIC:**
integrated with the city
- SOCIALLY INNOVATIVE:**
partnerships expand within and beyond the borders of Somerville, between the city, individuals and organizations, to cultivate social capital
- AN INCUBATOR FOR INCUBATORS,** with mechanisms for supporting ideas and initiatives, including new models of: cooperatives, financing, membership, maturity, and flexible policy
- AN ICONIC SYMBOL:**
awesome/wow factor...the big revel (iconic symbol for somerville)

DEVELOPMENT & ENGAGEMENT PROCESS



A grid of small, stylized icons representing various sustainability concepts such as recycling, energy, water, and nature, arranged in a repeating pattern across the entire image. The icons are colored in shades of blue, green, and yellow.

SUSTAINABILITY

CULTURE

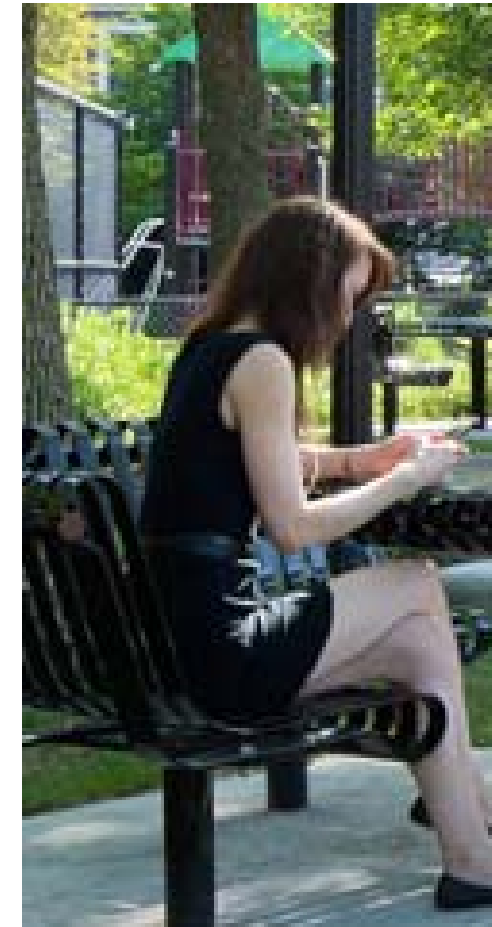
COMMUNITY

DEVELOPMENT



We Heard: Put More Park in the Farm

- 5th Largest Open Space – 2 acres
- walking path
- discovery elements
- seating (permanent/movable)
- community table
- lighting



Project History

Project History

Jan 26, 2014	Art Farm Focus Group Session # 1: Environmental Sustainability
February 2014	Art Farm Focus Group Session # 2: Arts & Culture
March 2014	Art Farm Focus Group Session # 3: Community Utility
May 2015	Art Farm Focus Group Session # 4: Economic Development
Fall 2015	Design Team Hired
Spring 2016	SMARTFarm Report
Summer 2016	Greenhouse & Refrigerator Installation, Remediation of Contaminated Soil Begun
December 2016	Community Meeting at Armory
Summer 2017	Remediation of Contaminated Soils Completed
Fall 2017	Electricity Brought on Site CPA Application
Dec 2017	Mayor Commits to ArtFarm as Permanent Space with Infrastructure Below
Spring 2018	Bulb Blitz Construction Staging Moved and Fence Erected Clean Up Day TODAY: Community Meeting

What's There Now?



Construction

ArtFarm

Refrigerator
Shape Up Somerville

Greenhouse
Operations
Green City Growers

World Farmers
Program
Groundwork Somerville



SAC Events

New England Music Festival (Boston Hassle)

Sat, June 16 (RD June 23) – all day

Stephod Music Festival

Sat, Aug 18 – all day

Lia Music Festival

Sat, Sept 8 & 9

MUM

Sat, Sept 22, 8pm – 12am

HONK volunteer event

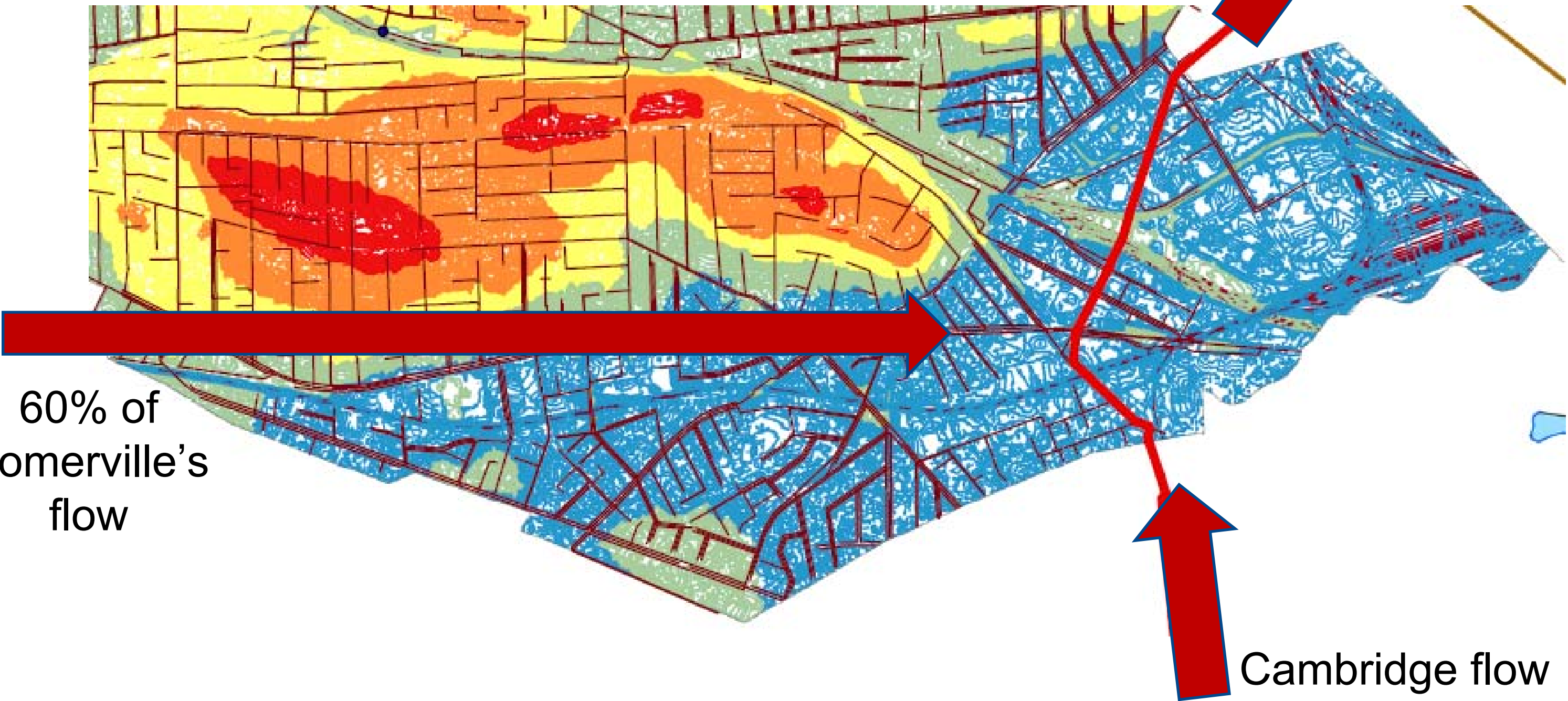
Sat & Sun, Oct 6 & 7 – evening



Stormwater Infrastructure

Union Square- Nexus of Flows

MWRA System

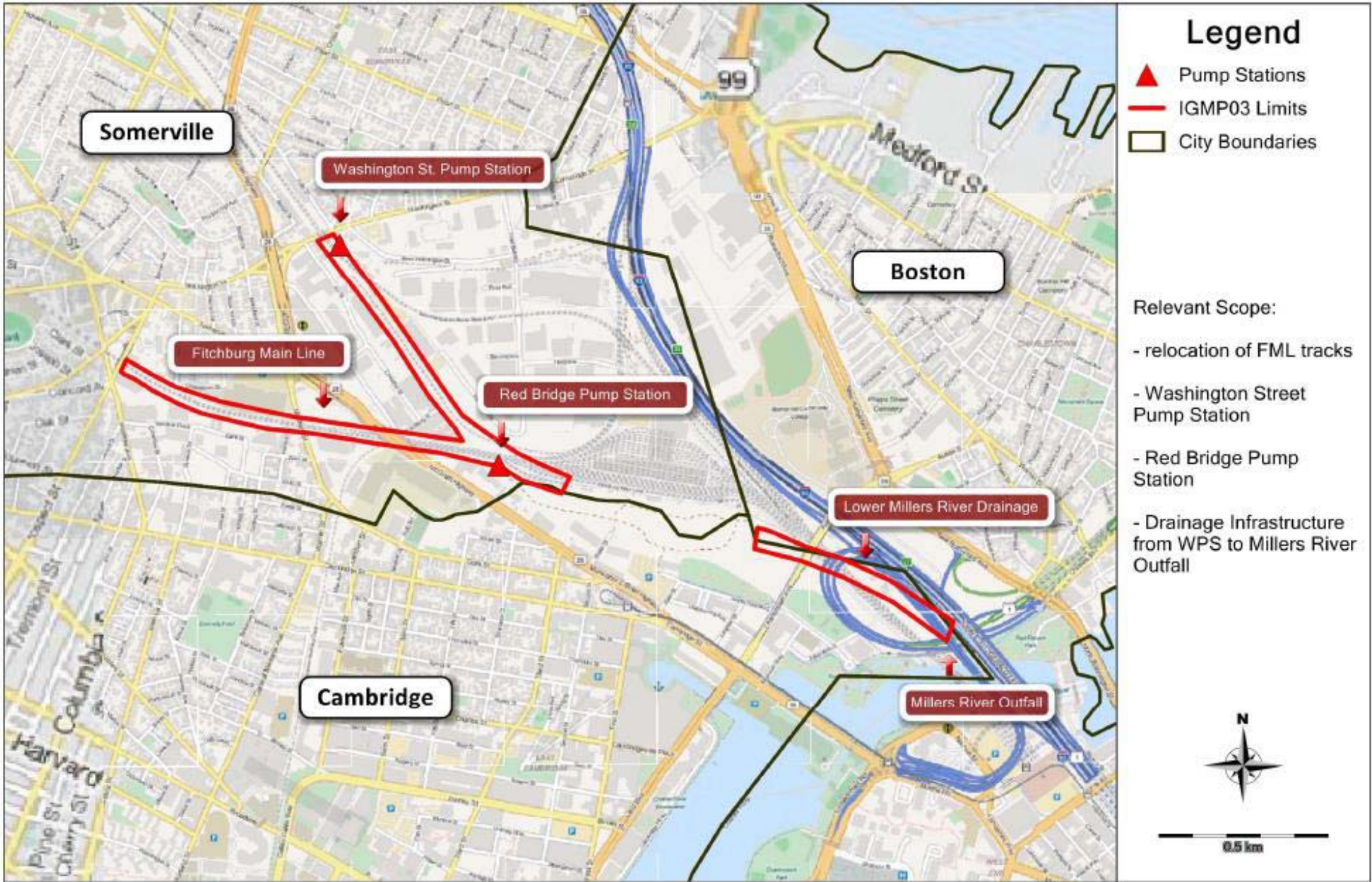


60% of Somerville's flow

Cambridge flow

➔ Uphill / Up-pipe areas all contribute to flooding

GLX drainage improvements and Poplar Street Pump Station



It's a System: 4 Projects



Somerville Public Library

Hill Park

Glen Park

Albert F. Argenziano School

Lincoln Park

Spring Hill Sewer Separation

Nunziato Stormwater Tank and Field

Somerville Ave Utility and Streetscape Improvements

Poplar St Pump Station

Proposed Connection



Locations of pump station
and forcemain approximate

Environmental Benefits

- Separation of sewage and stormwater
- Cleaner water in waterways
- Less treatment of stormwater (\$ and energy)
- Climate change adaptation
- Opportunity for green infrastructure and education

Phasing

Two Halves, Two Projects

Phase 1

- South: Stormwater Infrastructure Design
- North: Construction of ArtBarn & Site Work

Phase 2

- North: Construction of Stormwater Infrastructure
- South: Completion of ArtFarmSite Work

ArtFarm Site Design

Context



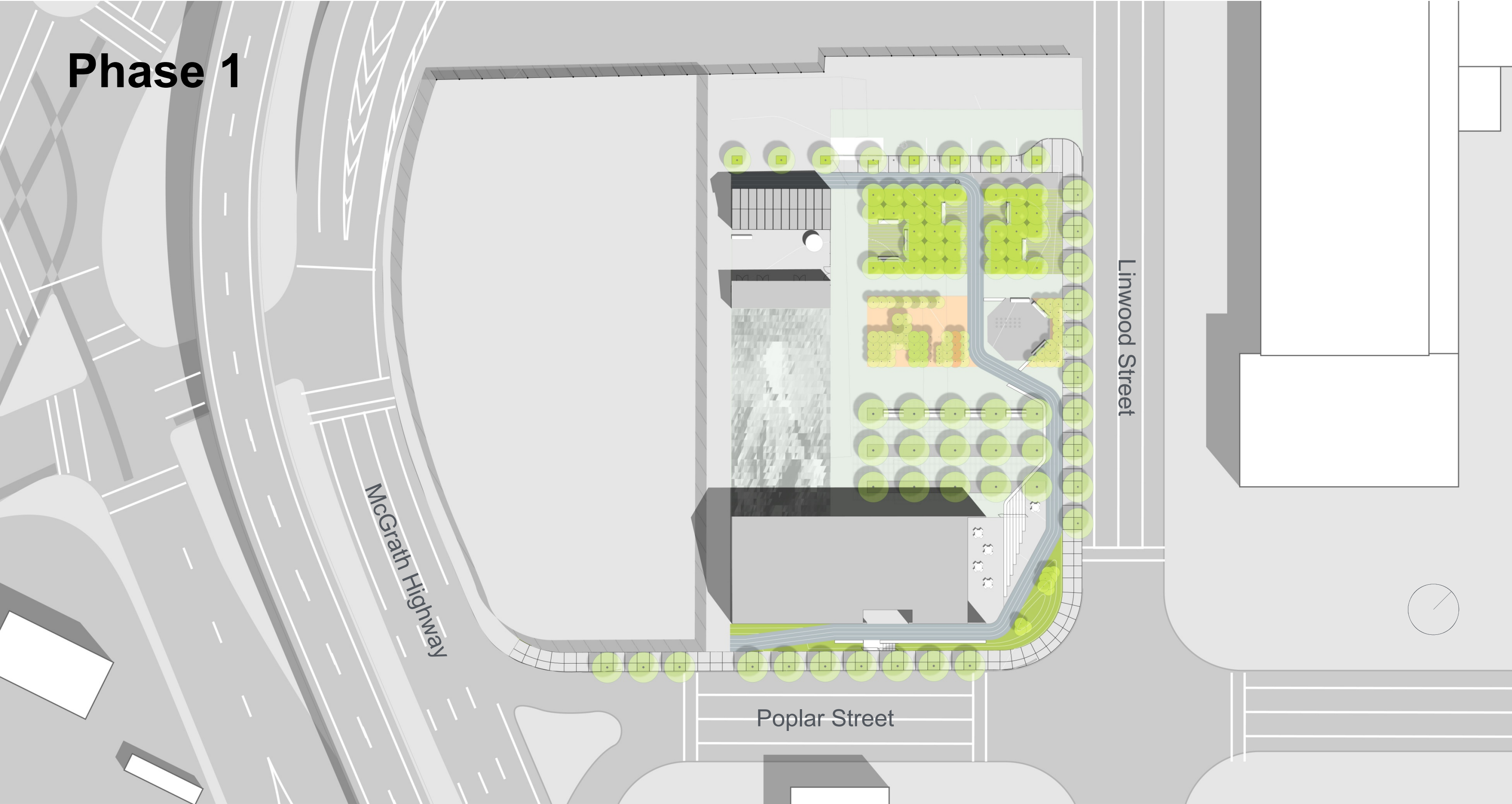
McGrahn Highway

Linwood Street

Poplar Street



Phase 1



McGrath Highway

Linwood Street

Poplar Street

Phase 1

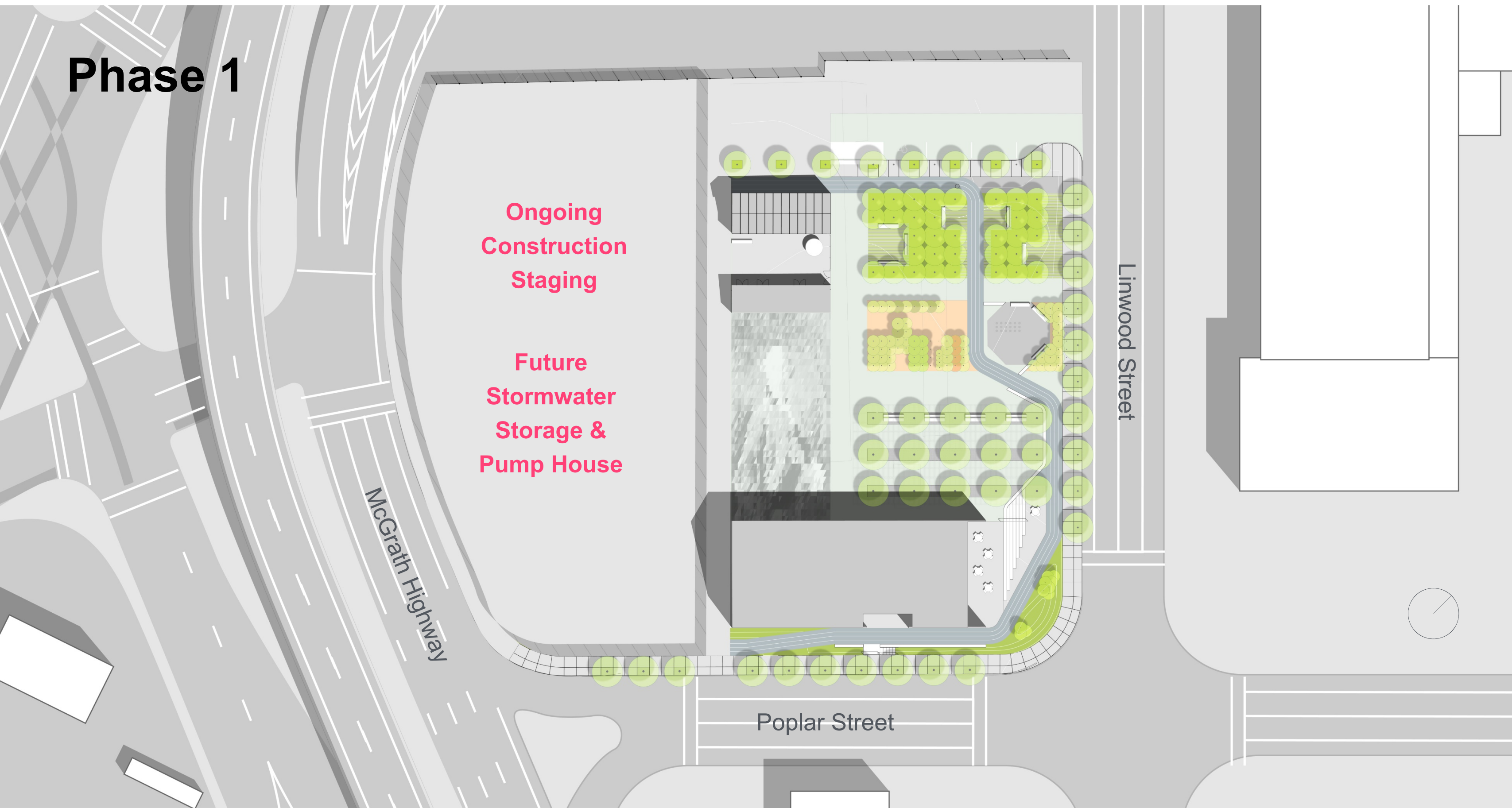
Ongoing
Construction
Staging

Future
Stormwater
Storage &
Pump House

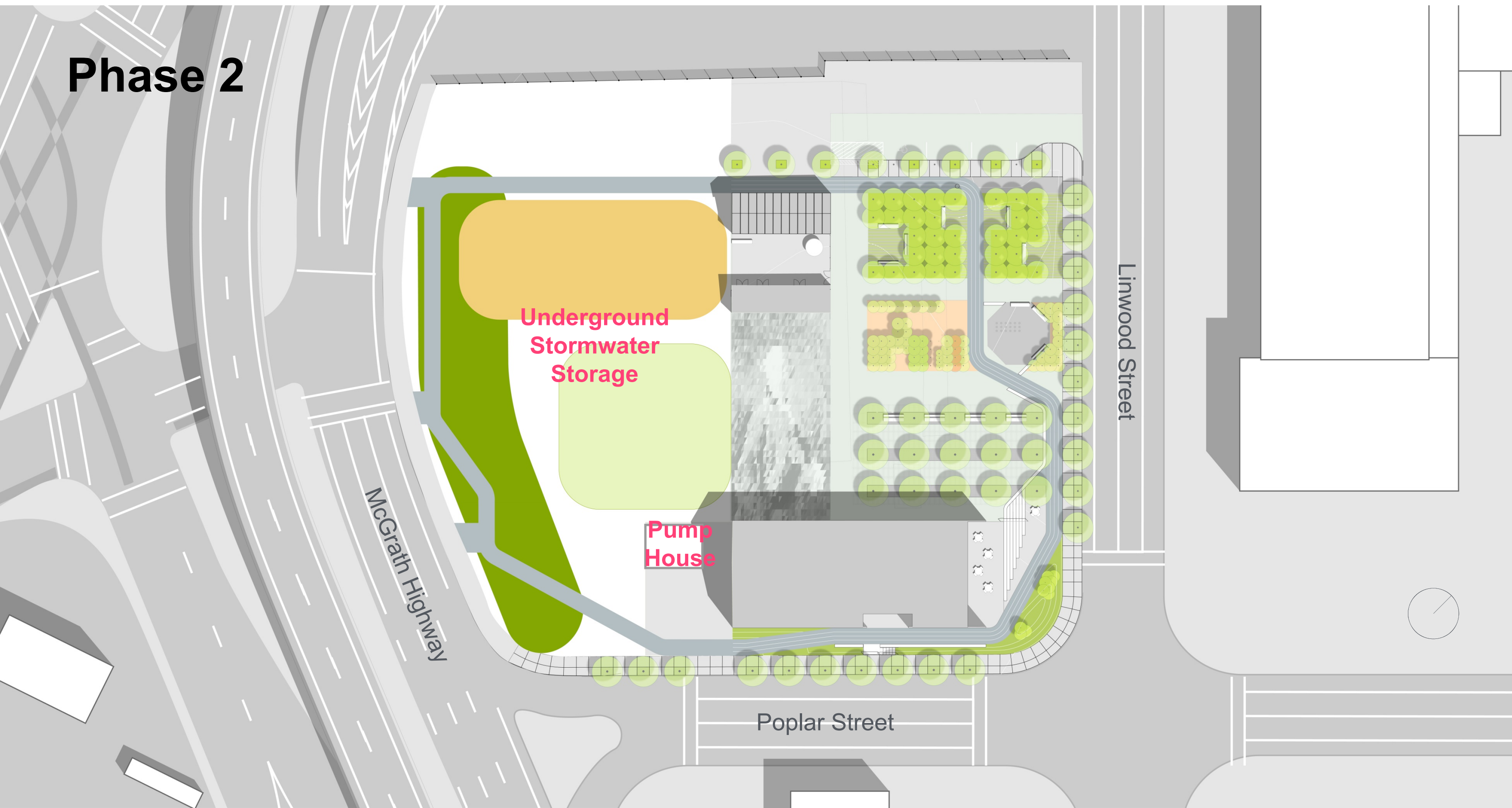
McGrath Highway

Linwood Street

Poplar Street



Phase 2



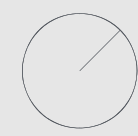
Underground
Stormwater
Storage

Pump
House

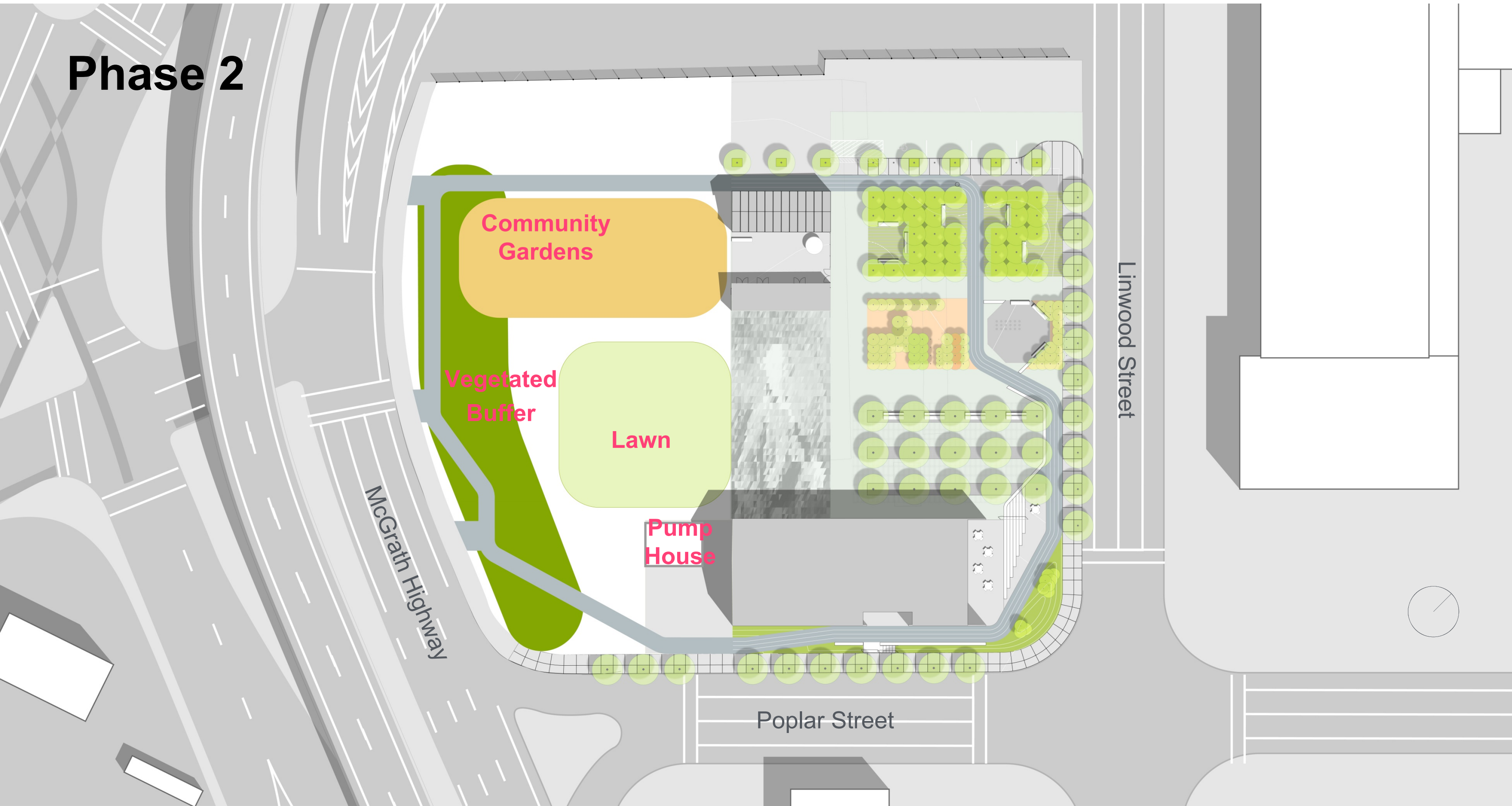
McGrath Highway

Poplar Street

Linwood Street



Phase 2



McGrath Highway

Community Gardens

Vegetated Buffer

Lawn

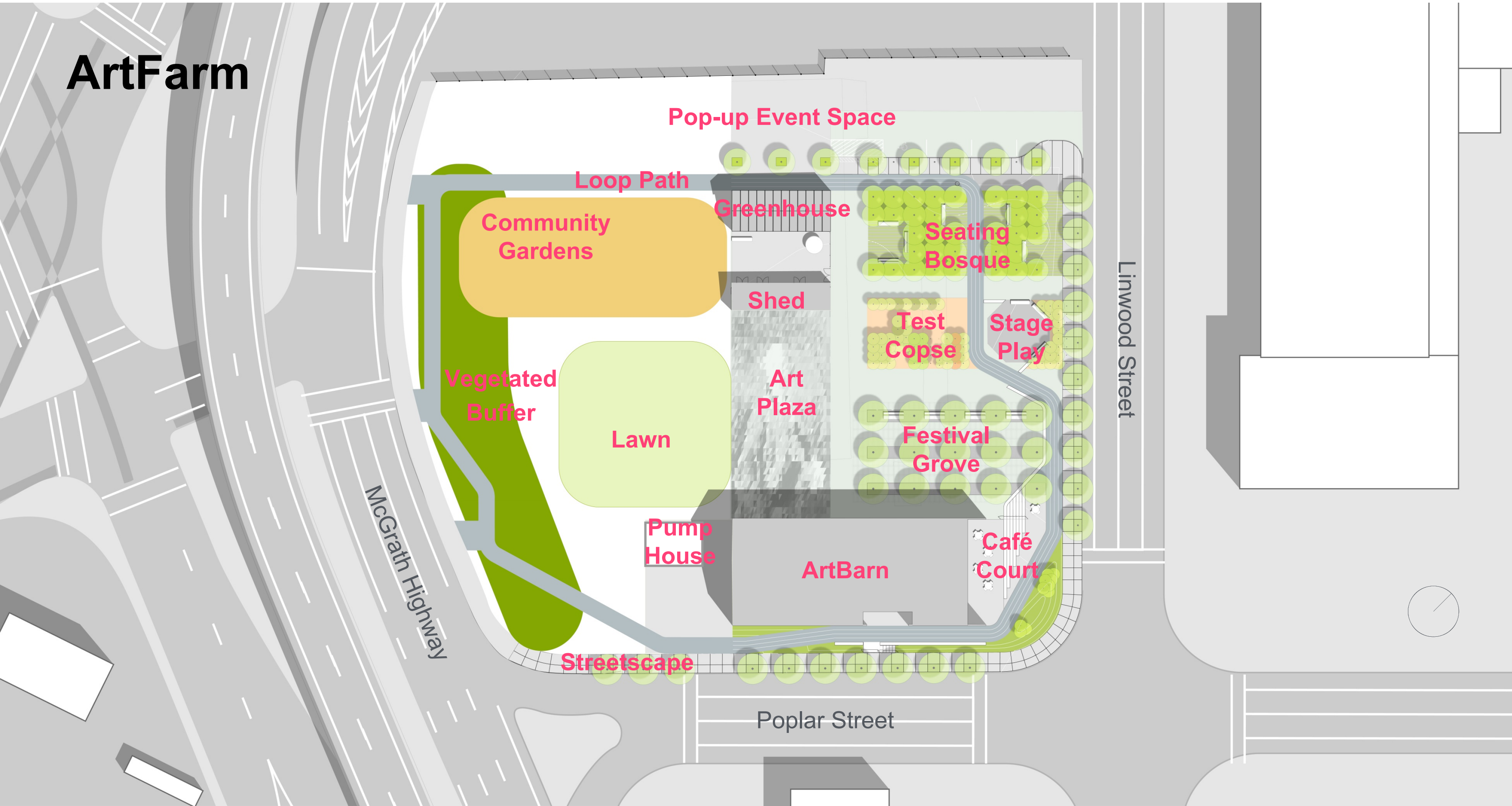
Pump House

Poplar Street

Linwood Street



ArtFarm



Pop-up Event Space

Loop Path

Community Gardens

Greenhouse

Seating Bosque

Shed

Test Copse

Stage Play

Vegetated Buffer

Art Plaza

Lawn

Festival Grove

Linwood Street

McGrath Highway

Pump House

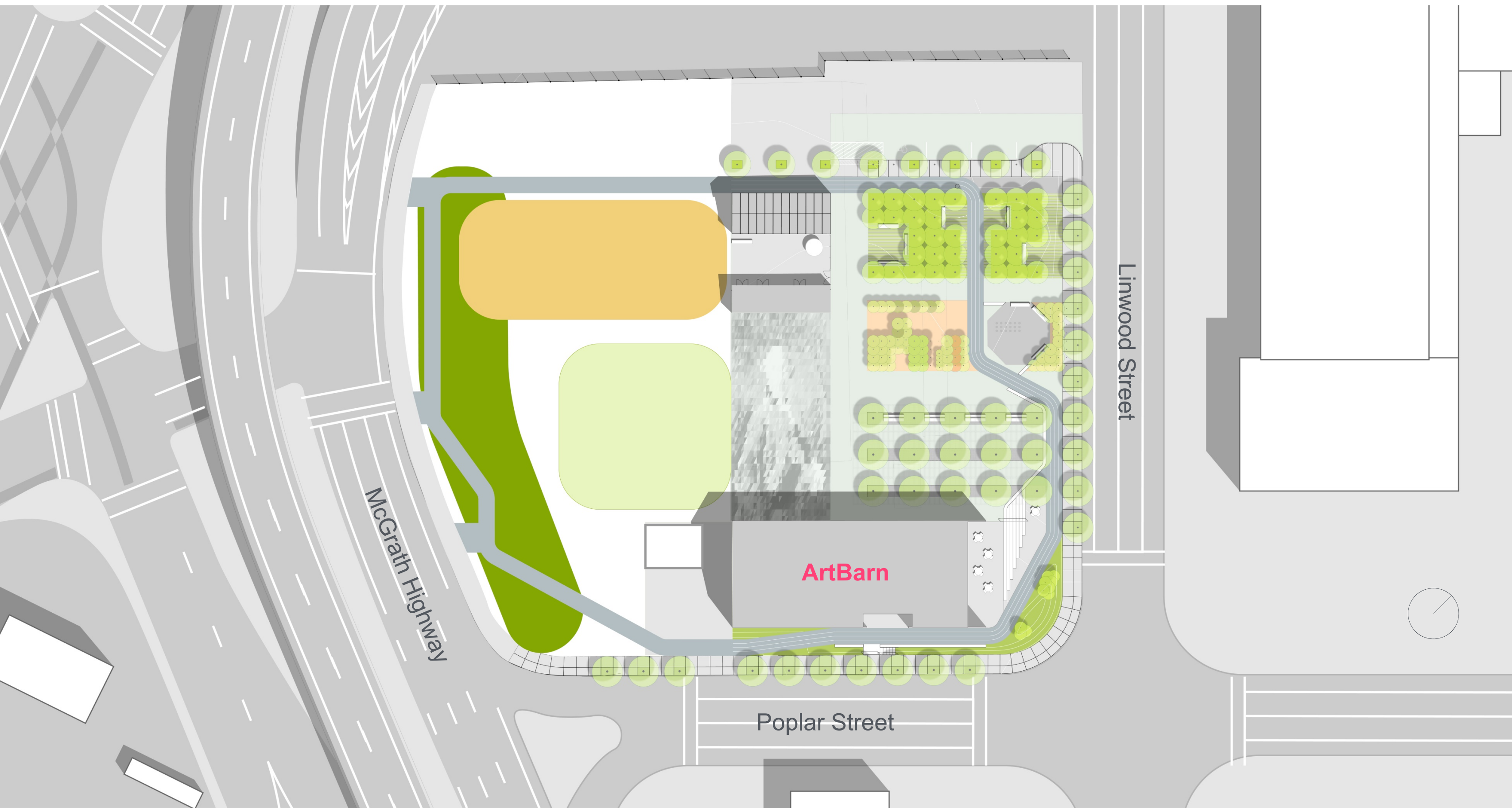
ArtBarn

Café Court

Streetscape

Poplar Street

ArtBarn



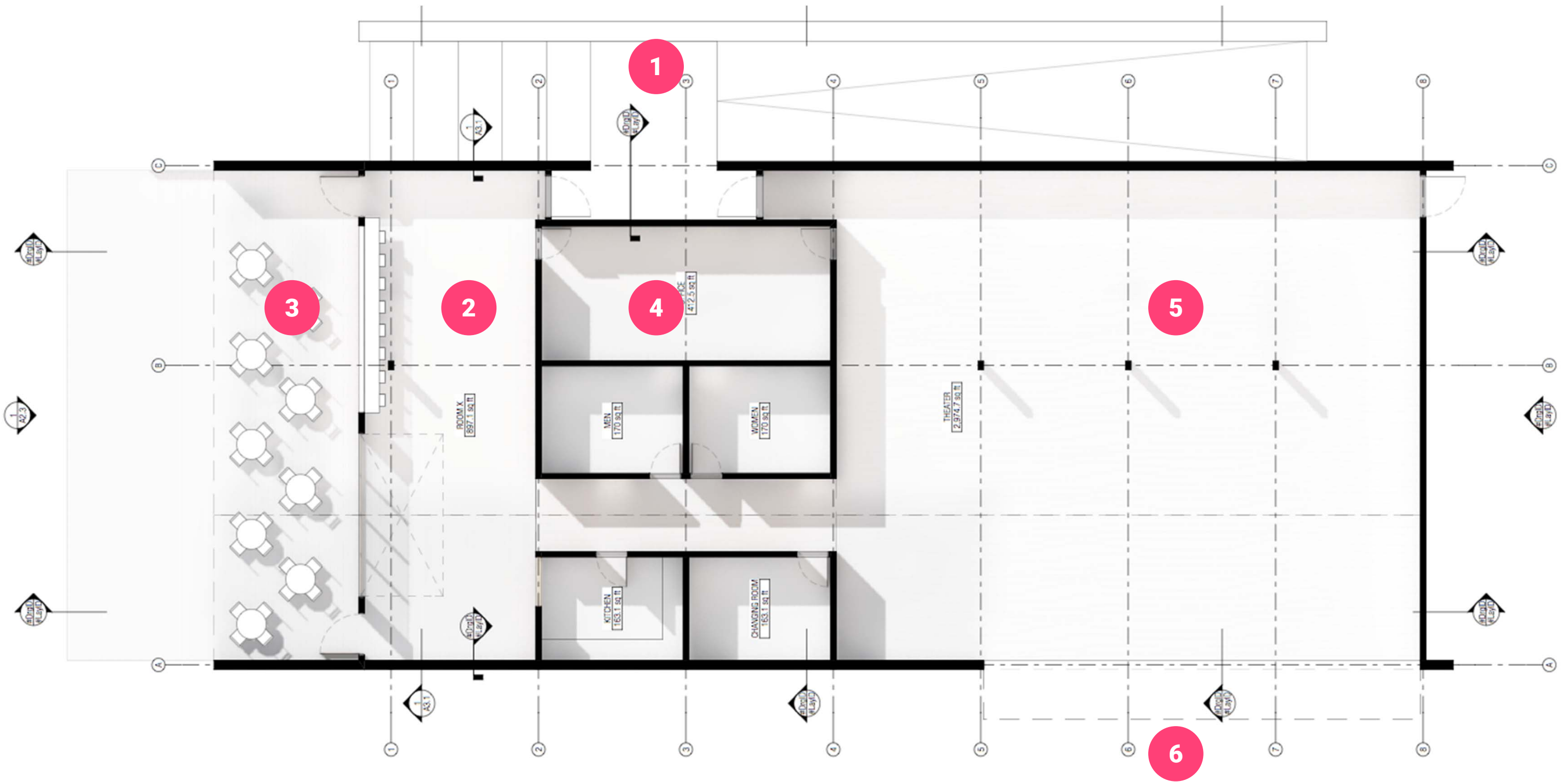
McGrath Highway

ArtBarn

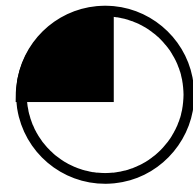
Poplar Street

Linwood Street



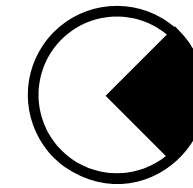


- | | | |
|-------------------------|-------------------------|----------------------------|
| 1 BUILDING ENTRY | 3 OUTDOOR "ROOM" | 5 PERFORMANCE SPACE |
| 2 PUBLIC PROGRAM | 4 BACK-OF-HOUSE | 6 OUTDOOR AUDIENCE |



Morning

- ➔ Cafe/Coffee
- ➔ Community Breakfast
- ➔ Gardening (in or out)
- ➔ Instructional Class
- ➔ Make Art
- ➔ Visit from Schools



Afternoon

- ➔ Cafe/Coffee
- ➔ Gardening (in or out)
- ➔ Rehearse Performance
- ➔ Food Trucks for Lunch
- ➔ Make Art
- ➔ Learn about Sustainability
- ➔ Classes for Kids (Visual, Performance, Farming)
- ➔ Buy Art, Craft, Food
- ➔ Visit Gallery
- ➔ Testing Ground (Soils/Air)
- ➔ Be Active
- ➔ Hanging Out

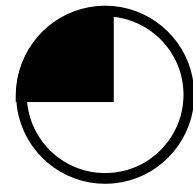


Evening

- ➔ Cafe/Drinks
- ➔ Community Dinner
- ➔ Instructional Class
- ➔ Movie
- ➔ Make Art
- ➔ Music or Theatre Performance
- ➔ Music Festival (e.g. PorchFest, HONK!)
- ➔ Hanging Out

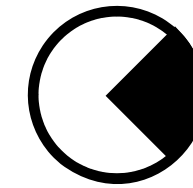
Arts/Cultural Engagement
 Community Utility
 Environmental Sustainability
 Economic Development





Morning

- ➔ Cafe/Coffee
- ➔ Community Breakfast
- ➔ Gardening (in or out)
- ➔ Instructional Class
- ➔ Make Art
- ➔ Be Active



Afternoon

- ➔ Cafe/Coffee
- ➔ Gardening (in or out)
- ➔ Instructional Class
- ➔ Food Trucks for Lunch
- ➔ Make Art
- ➔ Learn about Sustainability
- ➔ Tiny House Festival
- ➔ Visit Gallery
- ➔ Buy Art, Craft, Food
- ➔ See Art Demonstration
- ➔ Be Active
- ➔ Community Meeting
- ➔ Music or Theatre Performance

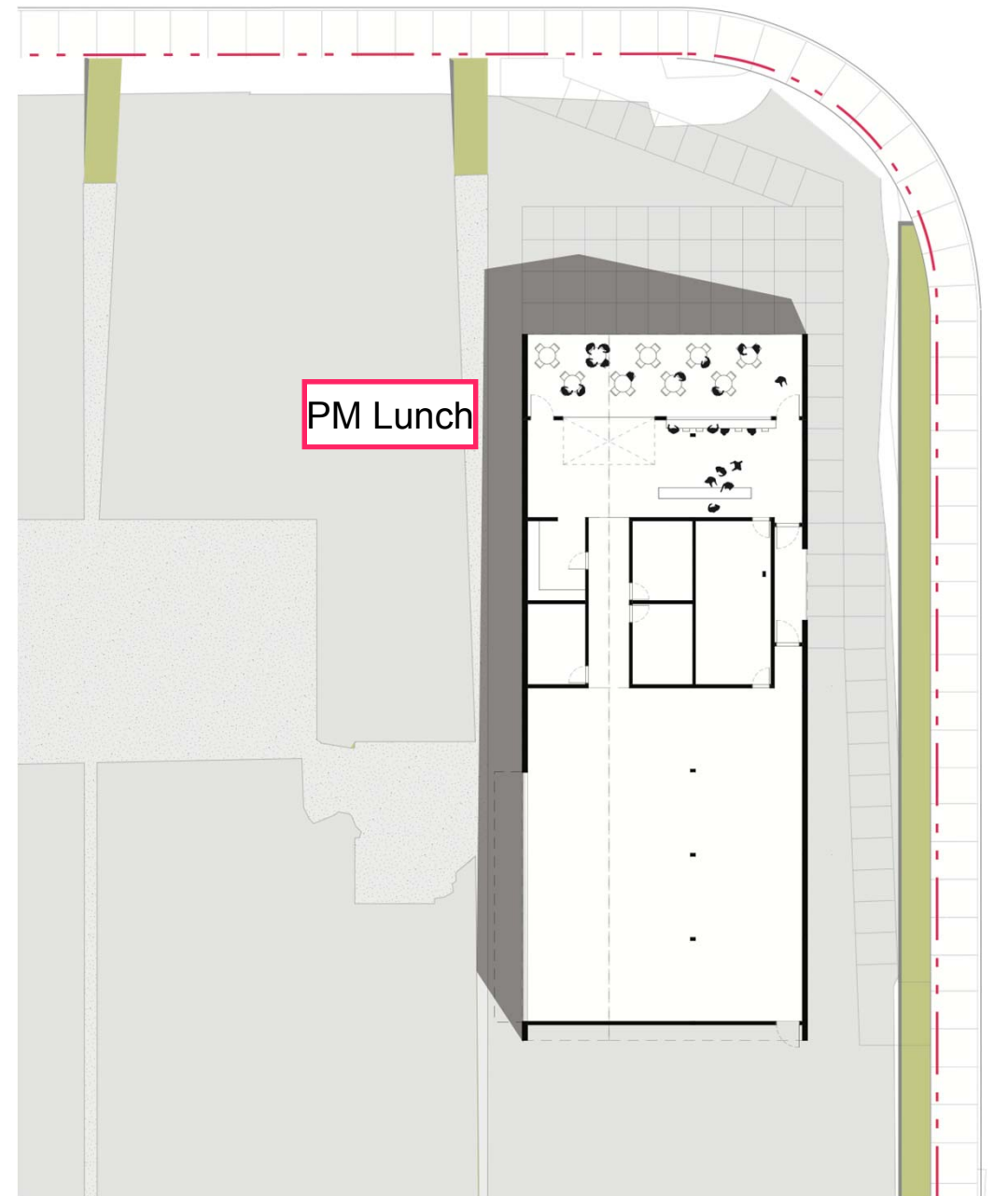
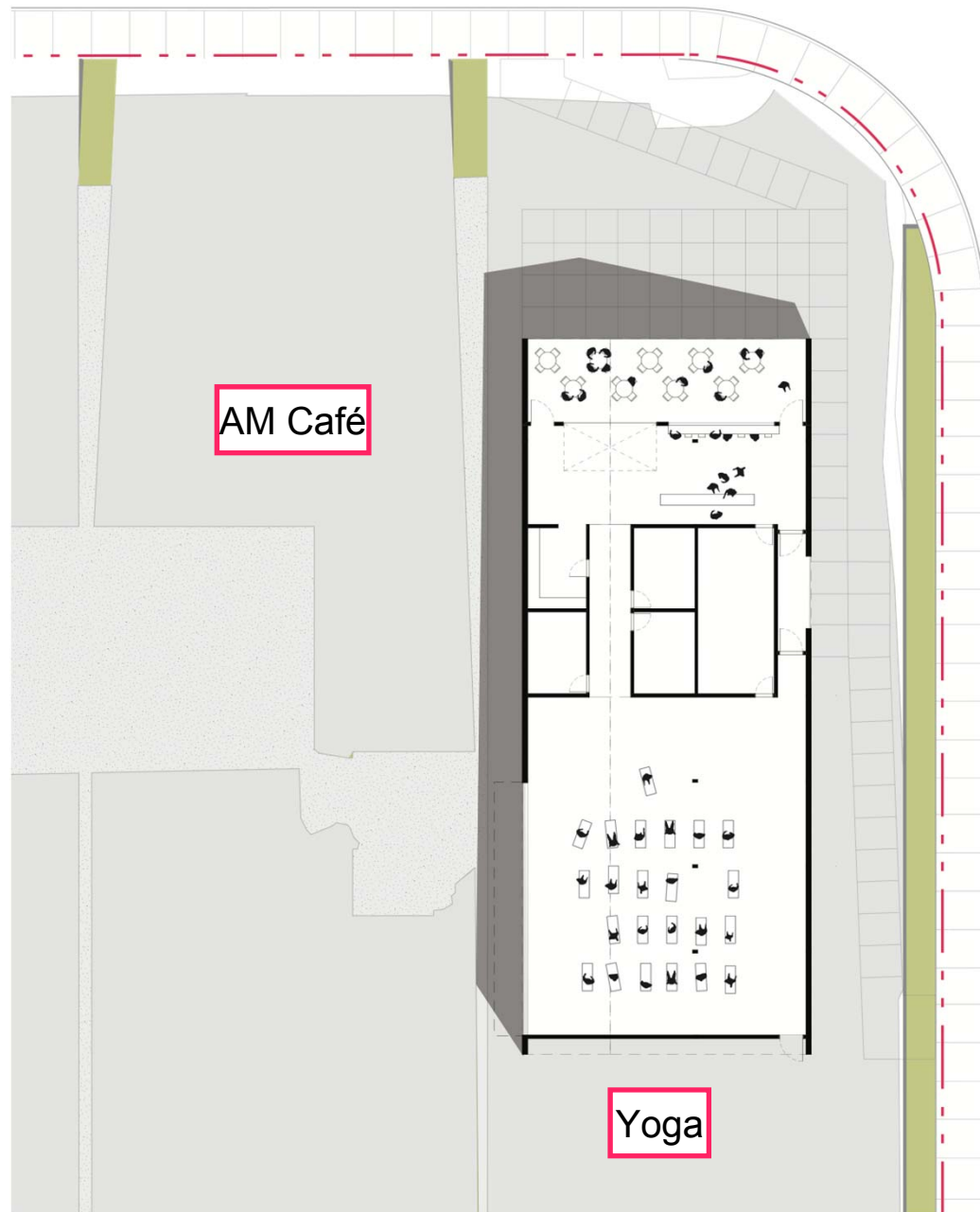
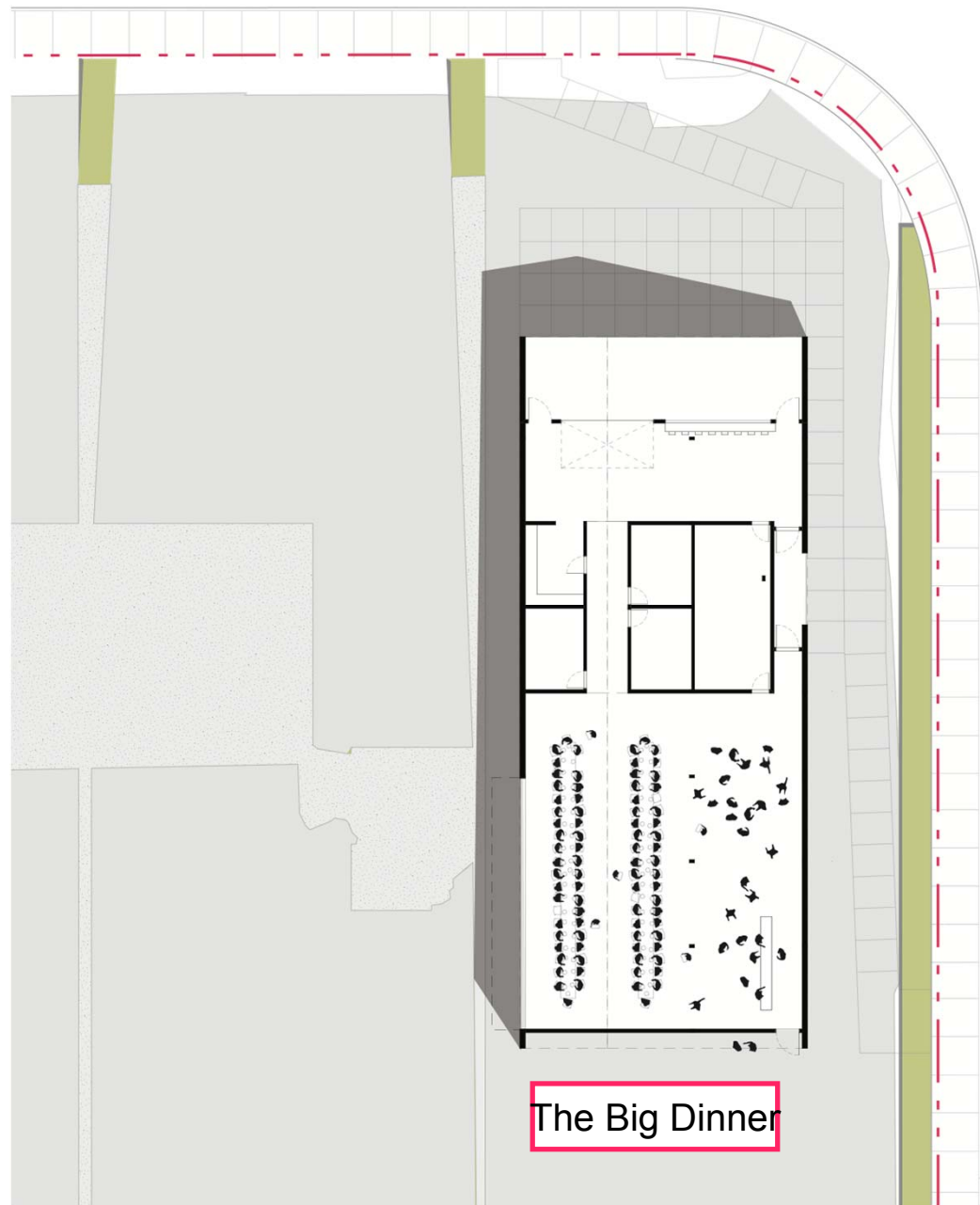


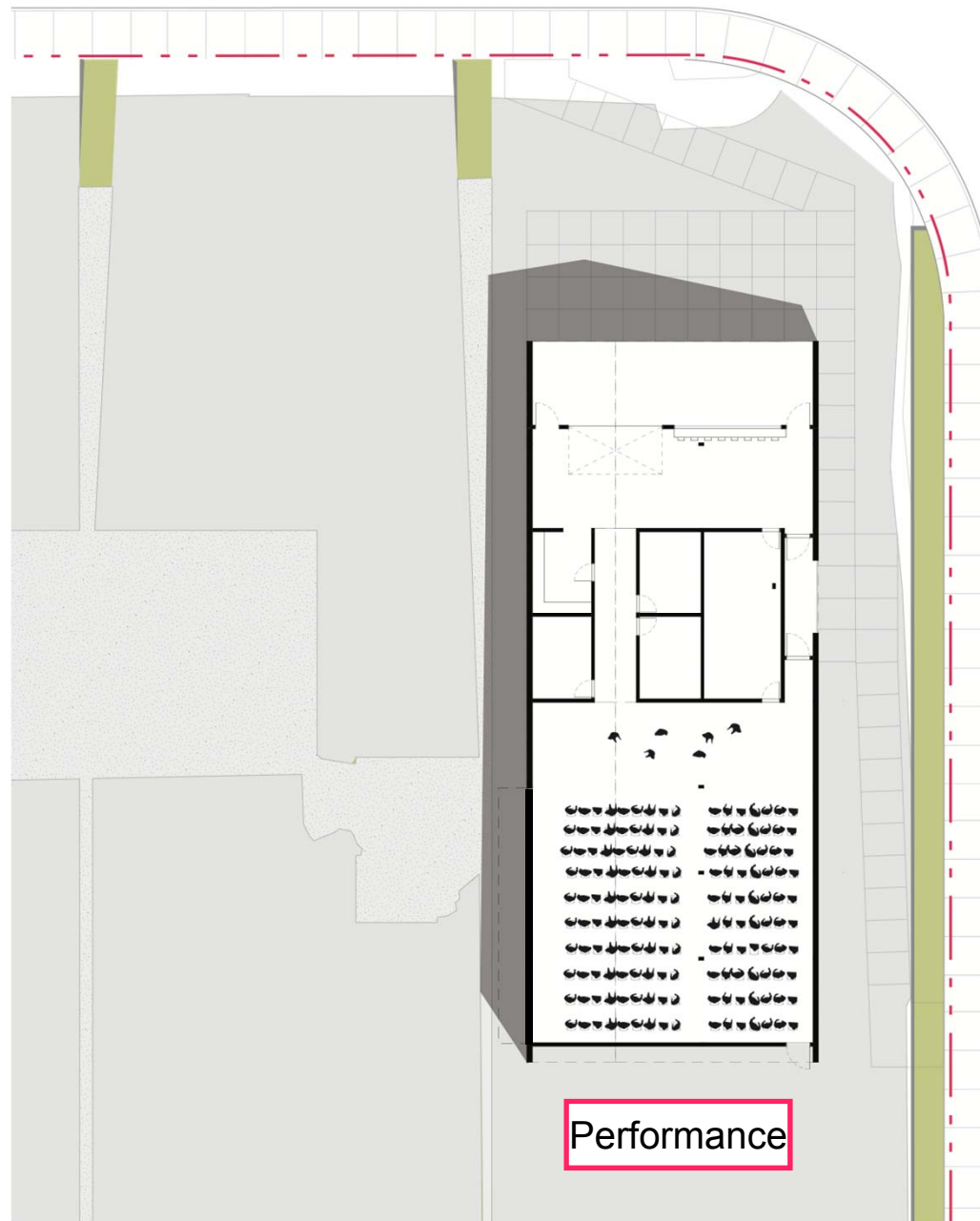
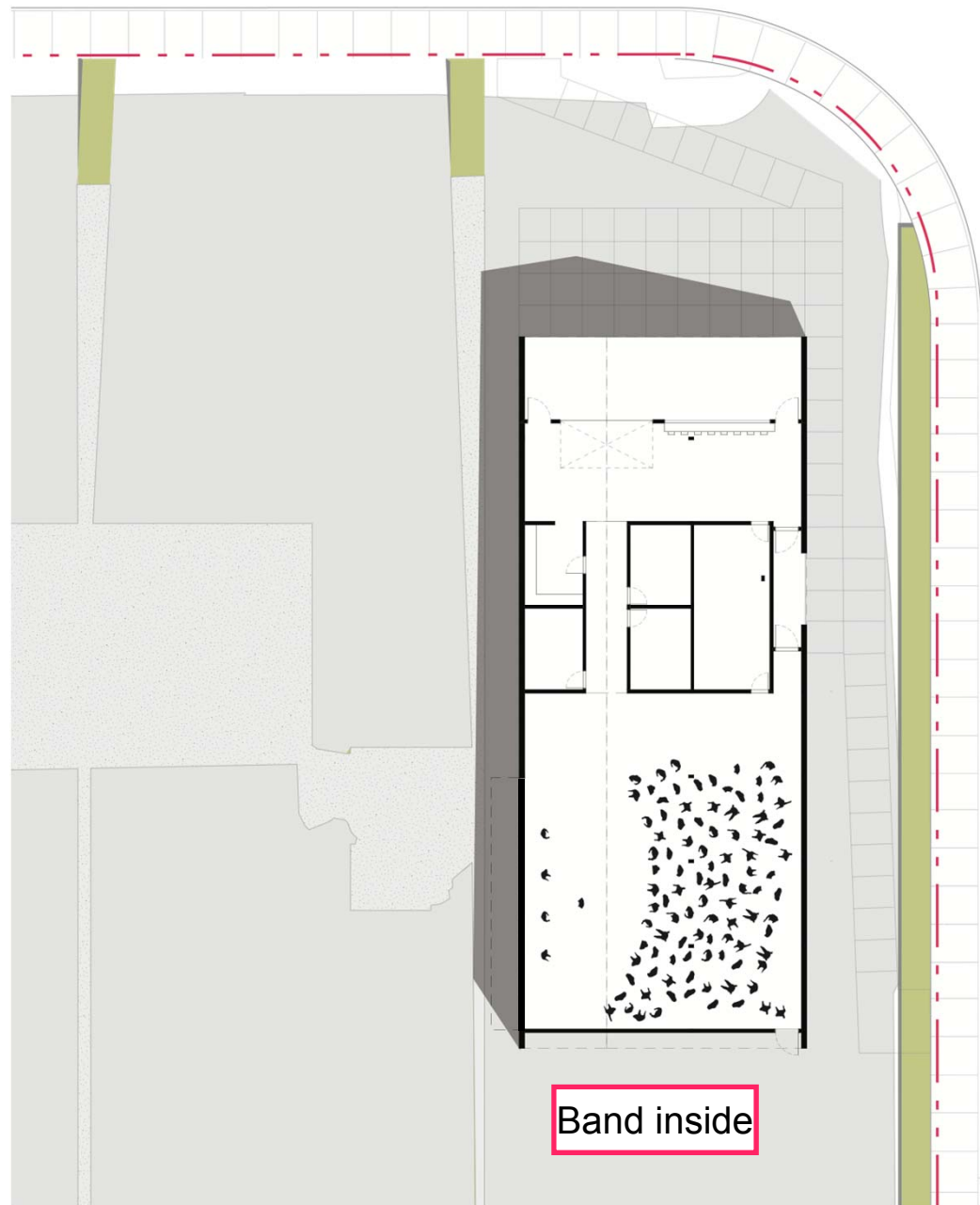
Evening

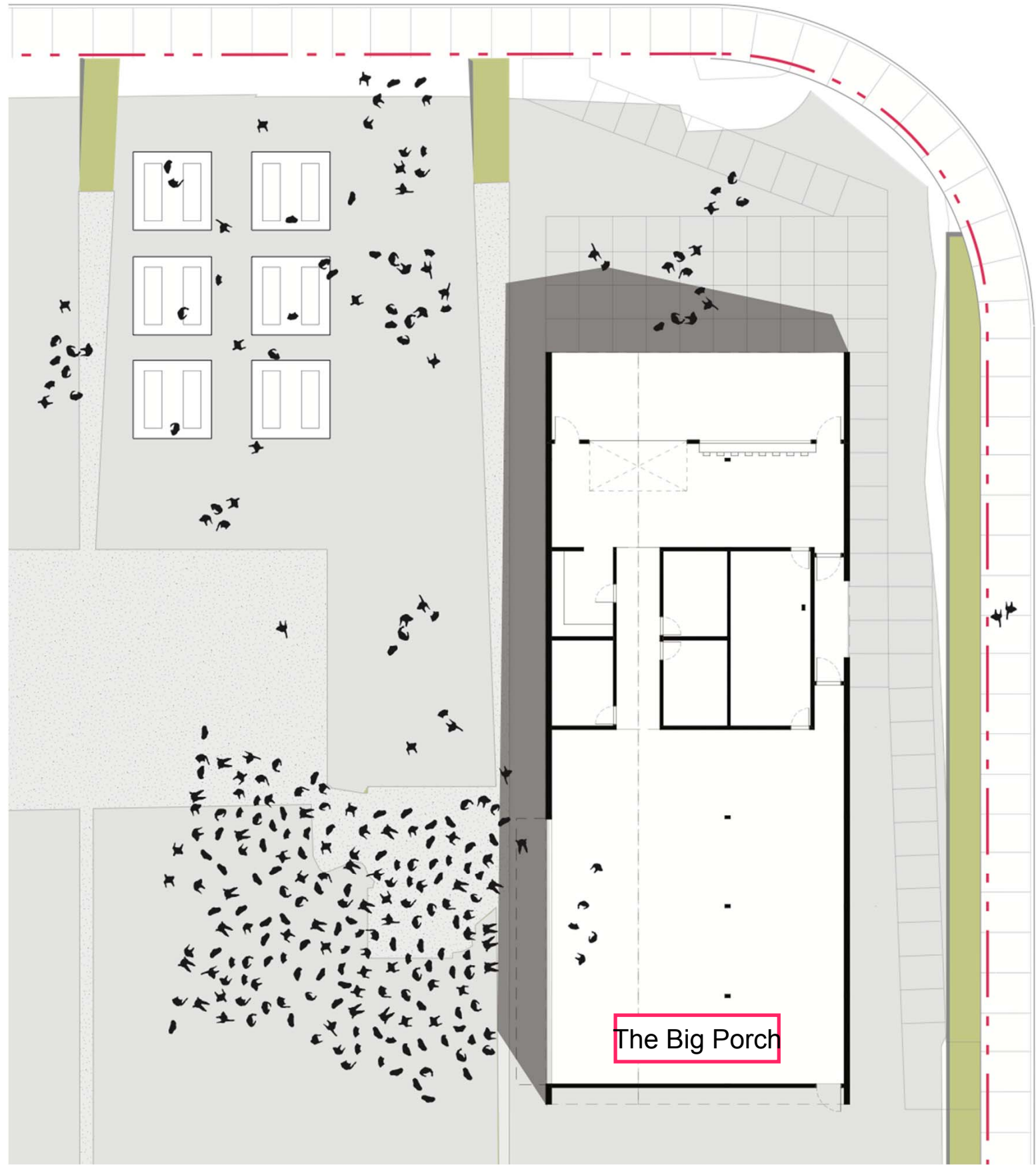
- ➔ Cafe/Drinks
- ➔ Bash (e.g. Meet under McGrath)
- ➔ Food Trucks
- ➔ Make Art
- ➔ Music or Theatre Performance
- ➔ Tiny House Festival
- ➔ Movie
- ➔ Visit Gallery
- ➔ Hanging Out

Arts/Cultural Engagement
 Community Utility
 Environmental Sustainability
 Economic Development









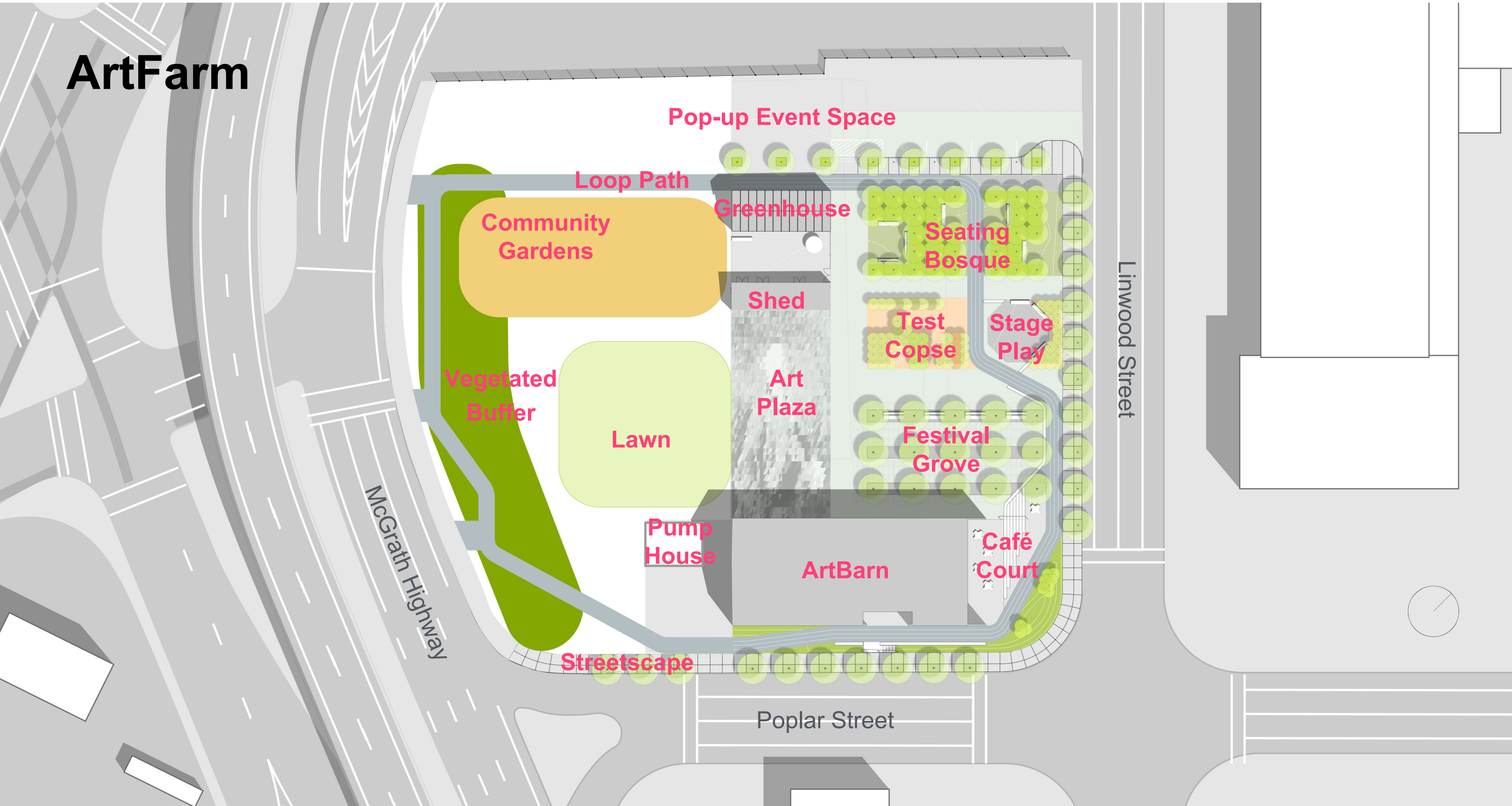






Special Events & Everyday Use

ArtFarm



Pop-up Event Space

Loop Path

Community Gardens

Greenhouse

Seating Bosque

Shed

Test Copse

Stage Play

Vegetated Buffer

Lawn

Art Plaza

Festival Grove

Linwood Street

McGrath Highway

Pump House

ArtBarn

Café Court

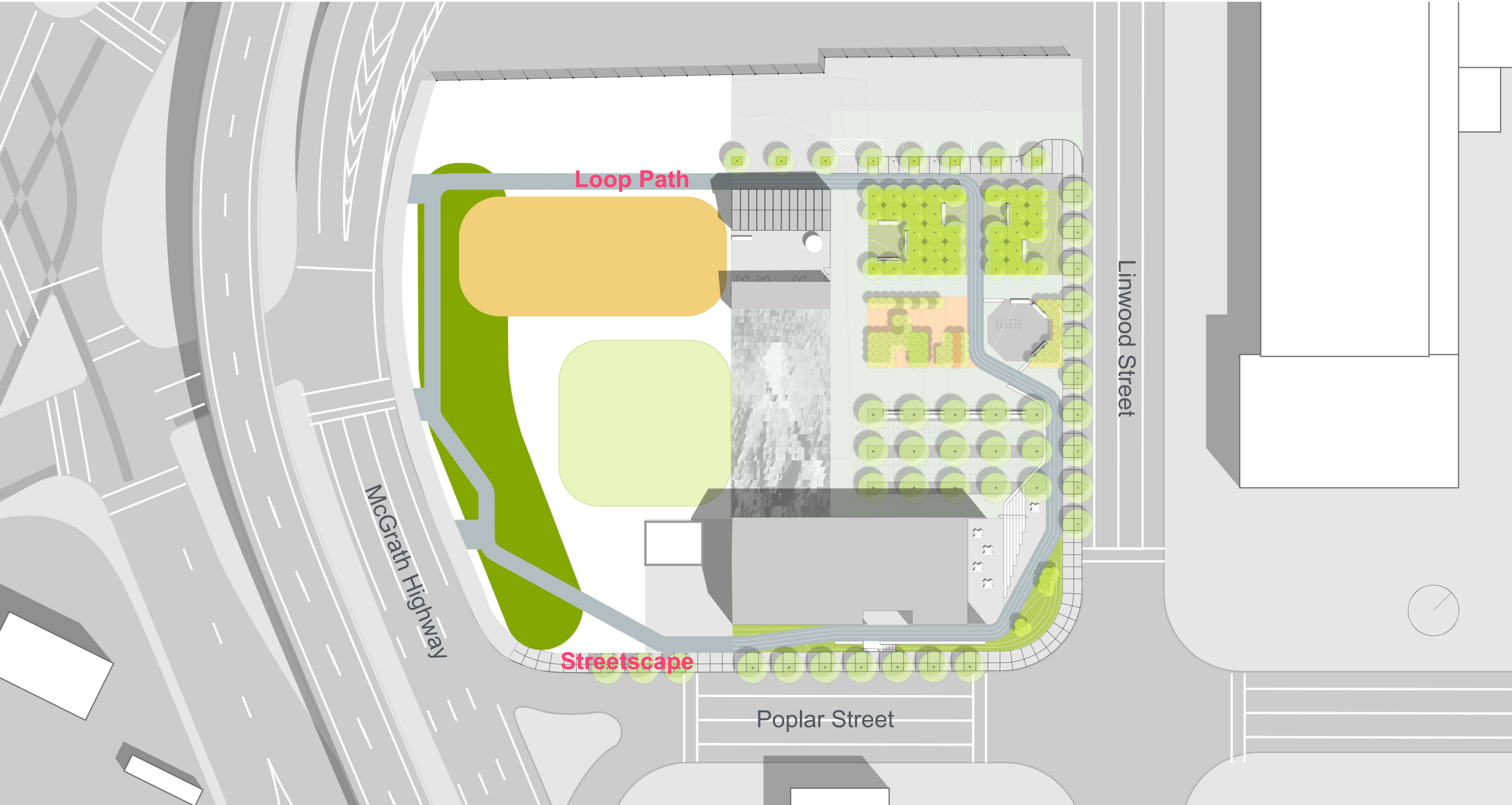
Streetscape

Poplar Street









Loop Path

Streetscape

McGrath Highway

Poplar Street

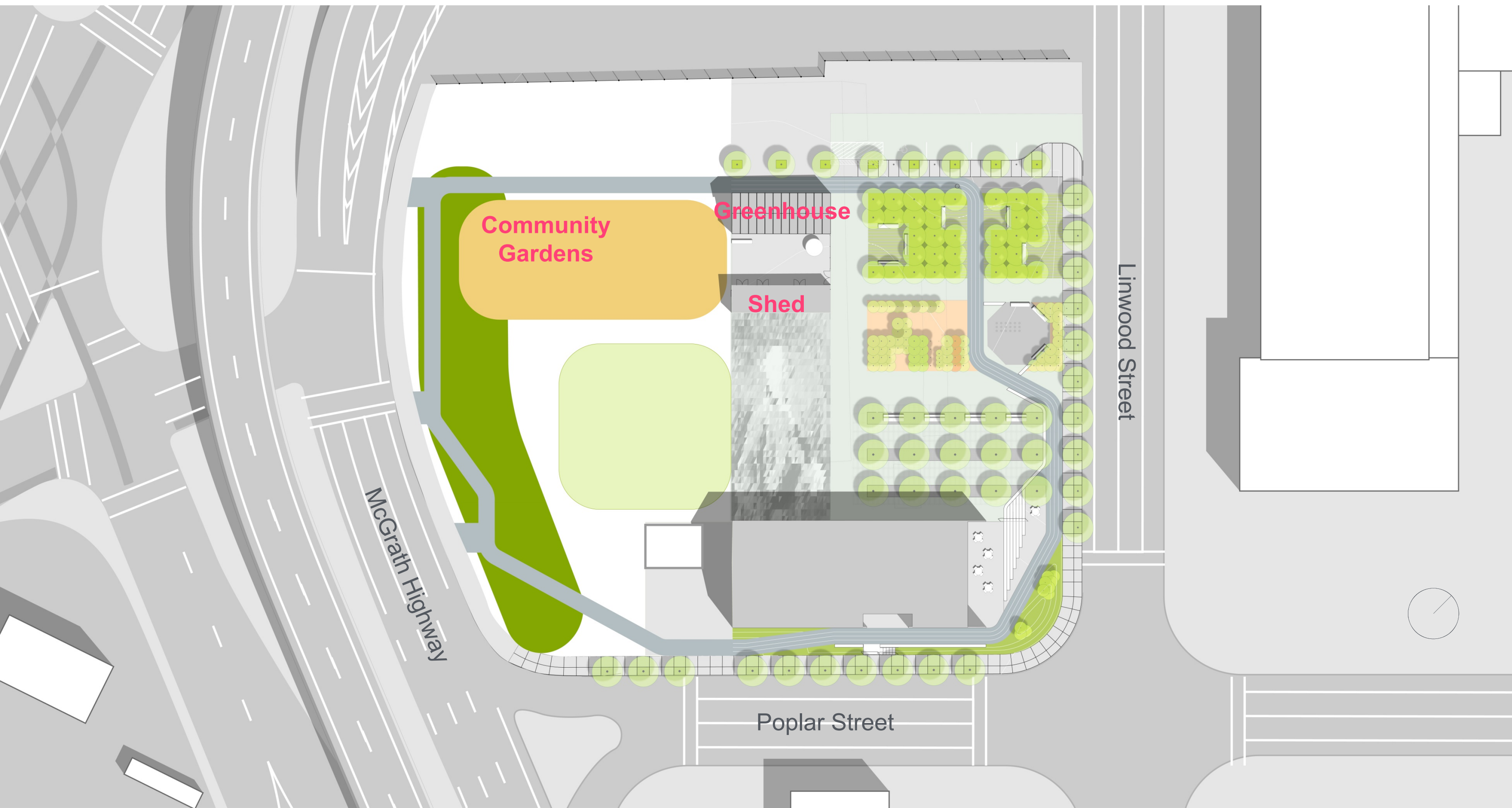
Linwood Street

Urban Ag Programs

- Community Gardens
- Professional Farm with Educational Outreach

Urban Ag Resources

- Greenhouse
- Stormwater catchment system
- Shed
- Walk-In Cooler
- Raised Beds



Community Gardens

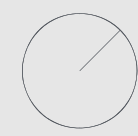
Greenhouse

Shed

McGrath Highway

Linwood Street

Poplar Street

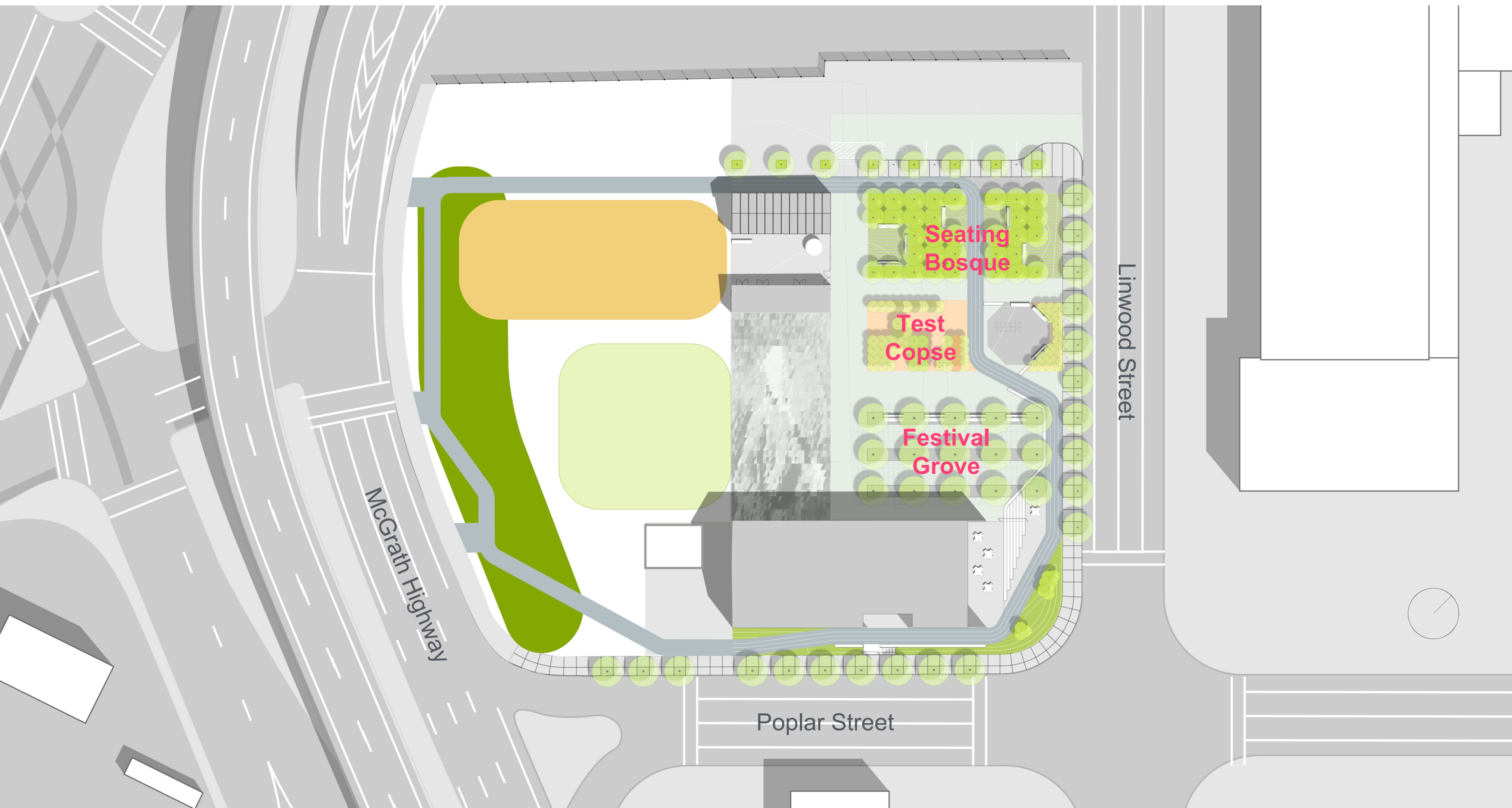




Tree Lab

A Living Laboratory to study:

- Urban Soils & Tree Well Design
- Species Adapted to Climate Change



McGrath Highway

Poplar Street

Linwood Street

Seating
Bosque

Test
Copse

Festival
Grove







ART FARM



What's Next?

Next Steps

- | | |
|-------------|---|
| 2018 | ArtFarm Comes Alive Through SAC Events
CPA for Site Work BOA for ArtBarn
Fundraising for ArtBarn & Grant Applications |
| Fall 2018 | Construction Documents for ArtBarn & Phase 1 Site Work
Engineering Design Stormwater Tank & Pump House |
| Spring 2019 | Groundbreaking for ArtBarn & Site Work |
| TBD | Phase 1 of ArtFARM Opening! |
| TBD | Phase 2 and Completion of ArtFarm & Infrastructure |

Contact:

Luisa Oliveira

LOliveira@somervillema.gov

(617) 625-6600 x 2529

Project Page:

www.somervillema.gov/artfarm

