



# City of Somerville Planning Department

## Recreational Adult-Use Marijuana Licensing

Legislative Matters Committee  
September 20, 2018

**This presentation and other documents will be available at:**  
[www.somervillema.gov/departments/planning-and-zoning/adult-marijuana](http://www.somervillema.gov/departments/planning-and-zoning/adult-marijuana)

# Adult Use Marijuana Regulations

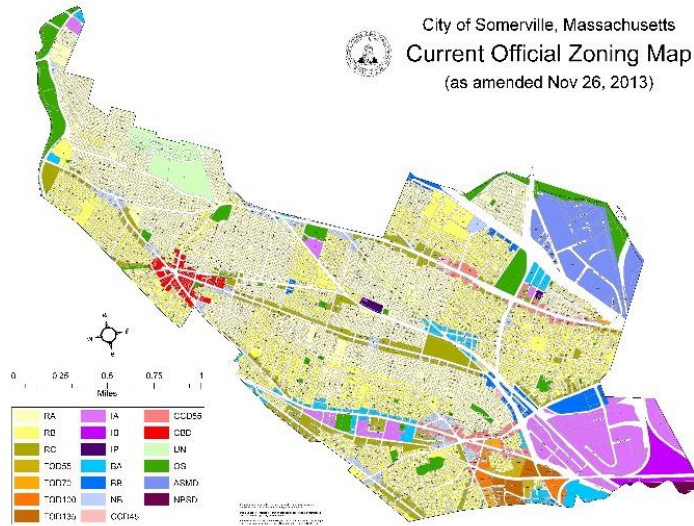
2016 Ballot Question

Legislative Review

New Regulations (March '18)

- Somerville may not impose a cap on the # of establishments that is less than 6 without a referendum vote.
- The “letter of non-opposition” process does not exist, but selected organizations are required to have a completed host agreement with the City.
- Somerville can enact a 3% local option tax on retail sales of adult-use marijuana.
- The host agreement permits local collection of a fee that is capped at 3% of gross retail sales and cannot be effective for longer than 5 years.
  - All retailers would be expected to sign the same agreement.

# Adult Use Marijuana Regulations



Cities can regulate through local zoning, through local licensing or both:

- Zoning allows the City regulate time, place and manner of an operation.
- Licensing allows the City to determine if the organization, and their leadership are able to meet standards set by the City

# Licensing Ordinance Overview

- Licensing Commission
- Applicable to all marijuana establishments (retail, manufacture, testing labs, etc.)
- Amount of Licenses
  - Minimum = 20% of package liquor stores (or 6)
  - Maximum = None
- Six-month head start for Priority Applicants
- Application requirements mimic those of the CCC
- Evaluation criteria
- Inspection and Compliance checks by Health and Human Services

# Priority Applications

- Economic Empowerment Applicants (determined by the CCC)
  - Communities that have been disproportionately harmed by marijuana law enforcement (Chelsea, Lynn, Revere, and neighborhoods of Boston)
    - Applicants from or reside in those communities
    - Held positions that served populations in those communities
  - Drug-related CORI
  - Individuals from Black, African-American, Hispanic, or Latino decent
- Somerville resident owned entities
- Local cooperative owned entities
- Existing medical marijuana dispensaries



# Application Requirements

## 1. Application of Intent packet

- a. who is involved in the business
- b. source of funding
- c. where the business is proposed to operate
- d. community host agreement
- e. outreach meeting

## 2. Background Check packet

## 3. Management and Operations Profile packet

- a. timeline for operation
- b. liability insurance
- c. certificate of good standing with Mass. DOR
- d. security, storage, transportation, inventory tracking, quality control procedures, employee training



# Evaluation Criteria

## 1. The Licensing Commission will consider:

- Compliance with State and Municipal laws
- Consistency to community values
- Hiring local residents and offering competitive wages/benefits
- Sustainable practices
- A commitment to help monitor health impacts on the neighborhood
- Criminal records of owners of the entities
- Comments from OSPCD and the Department of Health and Human Services





# City of Somerville Planning Department

**Thank you!**