

## Community Path (1990's --

City of Somerville and Friends of the Community Path  
CPA FY'16: \$215,000 and FY'17: \$20,000



The City, in partnership with the Friends of the Community Path, completed repaving of the Path from Grove to Cedar Streets in early 2017, and will continue west of Davis Square following drainage work scheduled for this fall. Further collaboration will occur to create a design that improves the Path, focusing on better drainage and even more amenities. This community-oriented corridor offers a safe and efficient link to transit options, neighborhoods, and recreation and outdoor enjoyment. It represents Somerville's largest open space.

[www.pathfriends.org](http://www.pathfriends.org)

## \*Temple B'nai Brith (1919-1923)

(LHD)

Congregation Temple B'nai Brith

CPA FY'15: \$450,945



A fire suppression system and an elevator were installed, making the building fully ADA compliant to both its members and visitors. When the Byzantine Revival style building was opened in 1925, it was the spiritual home for 500 families from Somerville and surrounding communities. It is also home to possibly the oldest Ark in the region, which was secured from B'nai Israel of Boston in 1915.

To date, over \$12 million has been awarded in CPA funds to over 40 projects across the City. Accomplishments include:

- Creating 53 new units of affordable housing through projects like the Somerville Housing Authority's Mystic Water Works project, which is both preserving a historic building and creating 25 new units of affordable housing.
- Stabilizing Prospect Hill Tower, so it can be open again to the public, and providing funding to preserve five historic buildings, including adding elevators to the Somerville Museum and Temple B'nai Brith so they will be accessible to all.
- Providing funding to create new designs for three open spaces, including the Prospect Hill Park and the Somerville Community Path, and funding the construction of the new Hoyt-Sullivan Playground.

These projects have been implemented by 9 different community organizations and 6 different City departments. Five projects are jointly implemented by City departments and community organizations.

To learn more about applying, go to the CPA website [www.somervillema.gov/departments/community-preservation-act](http://www.somervillema.gov/departments/community-preservation-act) or contact the Community Preservation Act Manager via (617) 625-6600 ext. 2107 or [kstelljes@somervillema.gov](mailto:kstelljes@somervillema.gov)

## Thank you for participating in this Bike Ride!

**Brochure Credits:** Lubov McKone & Brandon Wilson (SHPC) and CPC Coordinator, Kristen Stelljes;  
Route Map and Cue Sheet: Alex Anderson & for Police Coordination: Enid Kumin (SBC); and the Somerville Police Dept. for enthusiastically escorting us.



# City-wide Highlights of Community Preservation in Action in Somerville

Sunday, October 8, 2017

(rain date)

Sunday, October 15, 2017



Sponsored by the Somerville Bicycle Committee (SBC) and the Somerville Historic Preservation Commission (SHPC) and the Somerville Community Preservation Committee (SCPC).

More information, visit [www.somervillebikes.org](http://www.somervillebikes.org)

[www.somervillema.gov/historicpreservation](http://www.somervillema.gov/historicpreservation)

[www.somervillema.gov/departments/community-preservation-act](http://www.somervillema.gov/departments/community-preservation-act)

Joseph A. Curtatone, Mayor

## Welcome to our 16<sup>th</sup> Annual Historic Bike Ride! \*\*

The theme this year was chosen in recognition of the 5<sup>th</sup> anniversary since the residents of Somerville adopted the Community Preservation Act (CPA) in 2012. This State enabling legislation provides a significant new source of steady funding for affordable housing, historic preservation, open space, and recreation land projects. Over three-quarters of Somerville voters appreciated the need for expanding and enhancing these community assets! Community organizations, City departments, and individuals can apply for CPA funding for eligible projects through an annual process that is managed by a Community Preservation Committee (CPC) for historic resources and open space/recreation land applications. The Affordable Housing Trust Fund manages the annual process for affordable housing applications. The funding for CPA comes from three sources: 1) a 1.5% surcharge on net property taxes; 2) municipal revenue; and 3) distributions from the Commonwealth's Community Preservation Trust Fund.

Projects involve people throughout the City, from SHS students designing a CPC logo, to historic property owners restoring a historic element of their house ravaged by fire, to community non-profits creating enhanced gardens in elementary schools to convey the importance of healthy eating to *all* members of the school population.

This Bike Ride will take us from the very center of Somerville through most other neighborhoods, from the East to the West, stopping periodically to learn how our community is benefitting from the distribution of the CPA funds over the past 5 years. Today we will only pass by or go inside a portion of the overall projects helped by the CPA program, but enough to appreciate how it is making Somerville an even greater place to live, work, recreate and raise a family. We hope you will consider new projects and initiatives to continue this trend. Somerville expects to continue moving progressively forward, and we need you to be a part of making it happen. Cycle ONWARD!

START:

CENTRAL HILL



## \*Somerville City Hall (1852)

Rehabilitation and Better Accessibility (LHD and NR)

City of Somerville - CPA FY'15: \$200,000

A firm will be hired to develop a design for the historic rehabilitation of the exterior, including accessibility improvements. Originally built as the City's first high school, the 2<sup>nd</sup> floor was converted to the Town's offices relocated from Union Square in 1867. The South wing was added in 1896 and the North wing in 1924. Although significantly renovated in the mid 1980's, the building code and use standards keep changing, so another upgrade is clearly needed.

## \*Central Library

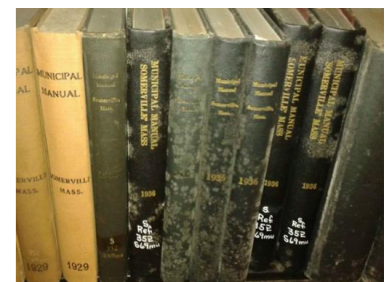
Mold Remediation (LHD and NR)

City of Somerville - CPA FY'17: \$21,279

Also nearby on Central Hill, the Library will hire a firm to restore historic books attacked by mold and make improvements to their storage room to ensure their long term preservation.

Books to be restored include bound volumes of *The Somerville Journal*, covering 96 years of Somerville history, library annual reports, and Alfred Morton Cutler's *The First National Flag*.

[www.somervillepubliclibrary.org](http://www.somervillepubliclibrary.org)



## \* Historic-designated sites

\*\* A full map and turn-by-turn cue sheet are printed on a separate sheet.



## SPRING HILL

### \*Somerville Museum (1925)

(LHD and NR)

Somerville Museum/Somerville Historical Society

CPA FY'15: \$168,191 and FY16: \$423,480

CPA support will enable many capital improvements to preserve this historic building and its collections. An elevator is also planned to be installed to make the Museum fully accessible to all residents and visitors.

The Somerville Historical Society was incorporated in 1897 and changed its name to the Somerville Museum in 1986. It was built to house a growing collection of objects important to Somerville's history, but it has evolved into a full-scale Museum offering a variety of arts and cultural programming, as well as exhibits and educational events, to explore and highlight the City's diverse population. It is currently run solely by dedicated volunteers from the community.



[www.somervillemuseum.org](http://www.somervillemuseum.org)

## UNION SQUARE

### Somerville Community Growing Center (SGC) (1993)

Friends of the Community Growing Center

CPA FY'15: \$52,090 and FY17: \$33,176



A redesign of the Community Growing Center previously prepared by design professionals will be converted into construction documents. The Center was created in 1993 on a portion of the site that once housed the Southern Junior High School, and prior to that the Bell School (1874), a 12-room elementary school. The site was originally designed and built through the efforts of several small City bodies known as the Somerville Pride Committee. The all-volunteer Friends group maintains the garden, which offers a wide variety of programming for all ages.

[www.thegrowingcenter.org](http://www.thegrowingcenter.org)

### Milk Row Cemetery (1804)

(LHD and NR)

City of Somerville

CPA FY'15: \$48,630; FY16: \$26,808; FY'17: \$6,300

Funds in FY'15 were used to rehabilitate the eight tombs in the cemetery. FY'16 and FY'17 funds will enable the resetting and conservation of 48 grave markers and restoration of the Civil War Monument.



This burial site is the oldest one in Somerville, and was established on privately owned land by the Tufts family and taken over for custody by the City in 1892. The Civil War Soldiers Monument was created in 1863 and is considered to be the oldest one erected by citizens in the country.

## EAST SOMERVILLE

### 163 Glen Street

Somerville Community Corporation (SCC)

(CPA FY'15: \$915,000)



The Somerville Community Corporation, a long-standing non-profit CDC, will create eight affordable and three market-rate homeownership units on this site, once the home of an American Legion Post. The SCC is a membership organization founded in

1967 that currently sees its mission to offer services as well as lead community organizing of low- and moderate-income Somerville residents to help them achieve economic sustainability and increase their civic participation

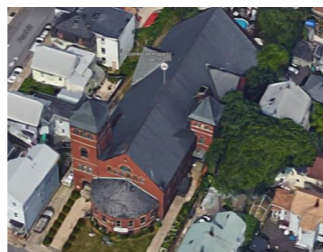
[www.somervillecdc.org](http://www.somervillecdc.org)

### \*Grace Baptist Church (LHD)

Somerville Hispanic Association for Community Development

CPA FY'17 funding: \$553,378

The Church is home to several organizations that provide needed services to the East Somerville neighborhood. Work will include repairs to the roof and masonry to ensure the building is watertight, and improvements to increase accessibility. This brick building is one of the few in the City considered representative of the Richardsonian Romanesque style of architecture.



### East Somerville Community Schoolyard Garden

Groundwork Somerville

CPA FY15 funding: \$45,373 for full schoolyards project

Groundwork Somerville is committed to "changing places and changing lives" through on-the-ground projects that help to transform local communities. Relying upon both students and community members improvements were made to eight schoolyard gardens across Somerville, including this one at the East Somerville Community School (ESCS). Here four new raised planter beds allow for easier access for students at all levels of physical ability. Students worked with a local artist to create mosaic tiles to label all the beds, and soil was improved through amendments and cover crops. A grape arbor trellis, flowering trees and berry bushes were also installed.



[www.groundworksomerville.org](http://www.groundworksomerville.org)

## ASSEMBLY SQUARE

### Blessing of the Bay Boathouse

Mystic River Watershed Association (MyRWA)

CPA FY'17: \$41,863

The Mystic River Watershed Association, in partnership with the Massachusetts Department of Conservation and Recreation (DCR) and Groundwork Somerville, is leading a comprehensive, community-driven redesign for the Blessing of the Bay Park.

The project seeks to make the park more welcoming and improve access to the Mystic River's edge.

[mysticriver.org/blessingofthebay](http://mysticriver.org/blessingofthebay)



1903

## WEST SOMERVILLE

### \*Mystic Water Works/Pumping Station (1862-1864)

(LHD and NR)

Somerville Housing Authority

CPA FY'15: \$243,000

and FY'16: \$507,000



This previous utility site will be converted to housing for 25 elderly or disabled families and is expected to open in December 2017. The Romanesque Revival building was originally built in 1864 as a pumping station for the Massachusetts Water Resources Authority, with additional wings added in 1870 and 1895. During World War I it was renovated to become office and research space, and renovated again in 1921 for use as maintenance shops.

[www.sha-web.org/](http://www.sha-web.org/)

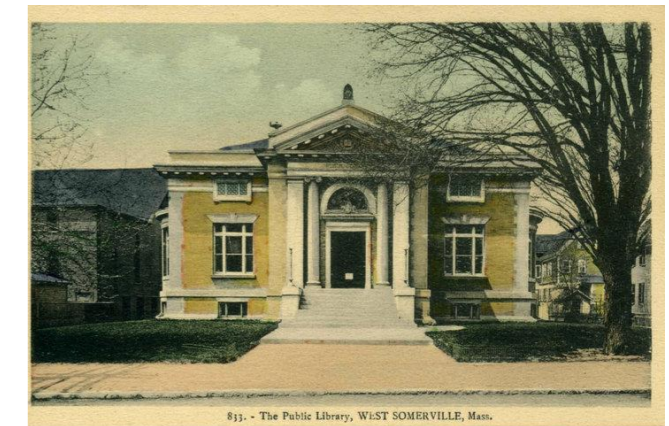
## DAVIS SQUARE

### \*West Branch Library (1909)

(LHD and NR)

City of Somerville

CPA FY'16: \$2,500,000



Significant improvements will be made to increase accessibility and preserve both the building interior and exterior, following an extensive public input and review process. This distinguished Neo-classical style building is considered to be an excellent example of the "Greek Temples of Learning" design and the last one of this type to be funded by the philanthropist Andrew Carnegie with a grant of \$25,000 for construction.

[www.somervillepubliclibrary.org](http://www.somervillepubliclibrary.org)