



Ward 6

MAYOR KATJANA BALLANTYNE

CITY COUNCILOR LANCE DAVIS



CITY HALL Community Meetings

Information • Access • Community

Ward 6 Agenda

Progress for All

Mayor Katjana Ballantyne

Office of
Sustainability and
Environment

Emily Sullivan, Climate Change Program Manager

Office of Strategic
Planning &
Community
Development

Davis Square Commercial Development Plan – Victor Nascimento, Senior Planner

Street Safety & Transit Update - Brad Rawson, Director of Mobility

Engineering
Division

Brian C. Postlewaite, Director of Engineering

Department of
Racial and Social
Justice

Denise Molina Capers, Director

Adrienne Pomeroy, ADA Coordinator

Somerville Police
Department

Captain Jim Donovan

Progress for All

MAYOR KATJANA BALLANTYNE

Somerville at a Glance

- 4 square miles in size
- 60% population turnover every 3 years
- 81,100 residents as of 2020
- 50+ languages spoken
- Somerville Public Schools students are a majority minority with over 60% identifying as low income
- From 2011 to 2021 we have added 8,856 jobs
- City Budgets 'Then and Now':
 - FY23 Budget: \$309,260,849
- 17 City parks renovated in the last 10 years



Access and Community

Access is rooted in affordability.

As our community changes, residents must be able to access the change around them.

- Developers, employers, job seekers, workforce development pipelines

Community is residents meeting, talking and coming together on issues that matter to them most.

- SomerVision 2040

Implementing Progress for All

- **It is created through inclusive, intentional efforts always viewed through an equity lens.**
- **How have we been engaging Somerville communities?**
 - COVID Listening Sessions, Participatory Budgeting, event attendance, Voice of Somerville survey
- **What are the issues I'm hearing?**
 - Affordability, COVID impacts, social justice, environment, transportation, infrastructure, quality of life
- **Where is Progress for All headed?**

Office of Sustainability and Environment

EMILY SULLIVAN, CLIMATE CHANGE PROGRAM MANAGER

esullivan@somervillema.gov

www.SomervilleMA.gov/OSE



Mayor's Office of Sustainability and Environment Mission

by Mike Powers

Develop and implement policies and programs that minimize environmental impacts and greenhouse gas emissions, build resiliency, and increase equity, enabling a healthy and enjoyable environment for all the people of Somerville and a responsible City government



Community Choice Electricity (CCE)

Electricity supply program organized by the City of Somerville to provide residents and businesses with new, City-vetted options for electricity supply

- Receive stable, competitive pricing*
- Choose between 3 products, with varying renewable energy amounts
- Promote regional, zero carbon, renewable energy generation and job creation
- Renters paying electric bills can participate without landlord permission
- Renewed program contract for November 2022-December 2024



To opt-up and for more information visit

**Future savings cannot be guaranteed due to Basic Service rate changes every 6 months for residential and commercial customers and every 3 months for industrial customers.*



Become a Climate Ambassador!

For more information sign up tonight or online:

bit.ly/SCF-Ambassadors



Somerville Climate Forward Update

- Somerville's Climate Action Plan
- Prioritizes equity, mitigation, adaptation, and resiliency
- Identifies priority actions for the City to address
- We are updating the Plan through September 2023
 - **Make your voice heard!**
 - **Help spread the word**
 - **Sign up tonight to learn more about ways to get involved**
 - **Sign up for the SustainaVille monthly newsletter**

More information: www.somervillema.gov/climateforward



Office of Strategic Planning & Community Development (OSP/CD)

VICTOR NASCIMENTO, SENIOR PLANNER

BRAD RAWSON, DIRECTOR OF TRANSPORTATION & INFRASTRUCTURE

Davis Square Commercial Area Plan

Over the past two years, we saw the public realm change and adapt to the needs of residents and businesses throughout the different stages of the pandemic. We want to expand on what we have learned over this time to provide an improved plan for quality civic spaces, outdoor dining and vending, pedestrian and bike safety, expanded wayfinding opportunities, and public realm maintenance that will support



More information can be found at <https://voice.somervillema.gov/davis-square>

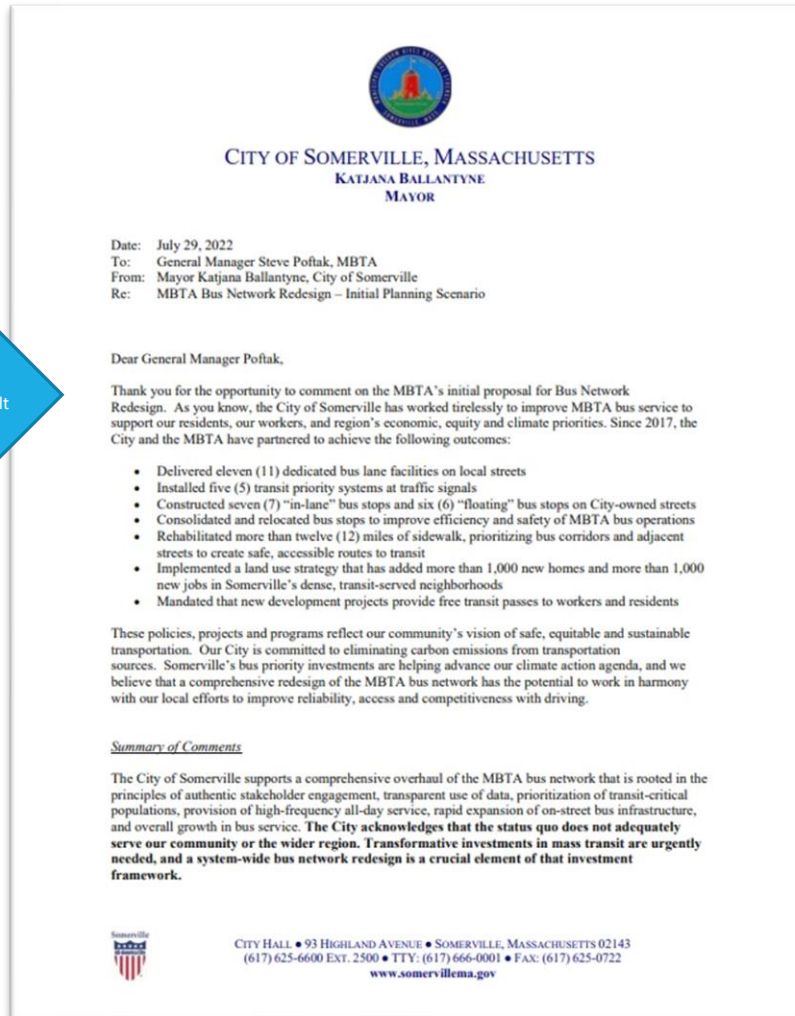
Mobility Division: Advocacy to Preserve & Improve Bus Service

Results of Somerville Advocacy:

- Route 80 service added back in
 - Service uses Boston Avenue, connects Davis to West Medford
- Route 87 service added back in
 - Service frequency improved, connects Clarendon to Lechmere
- Route 88 service added back in
 - Renamed as "90", connects Clarendon to Assembly via Highland Ave
- Route 89 service added back in
 - Connects Davis to Sullivan, no Clarendon variant
- New services in East Somerville and Union Square
 - Assembly-Chelsea; Assembly-Ruggles; Union-Malden; Brickbottom-Ruggles



Mayor + MBTA "Open Mic" Event at Clarendon Towers



Mayor's Letter, July 2022
<https://nginx.f2-live.some01.us2.amazonaws.com/sites/default/files/2022-7-29-City-of-Somerville-Comment-Letter-MBTABusNetworkRedesign.pdf>

Mobility Division: MBTA Green Line Extension (GLX) and Community Path Extension

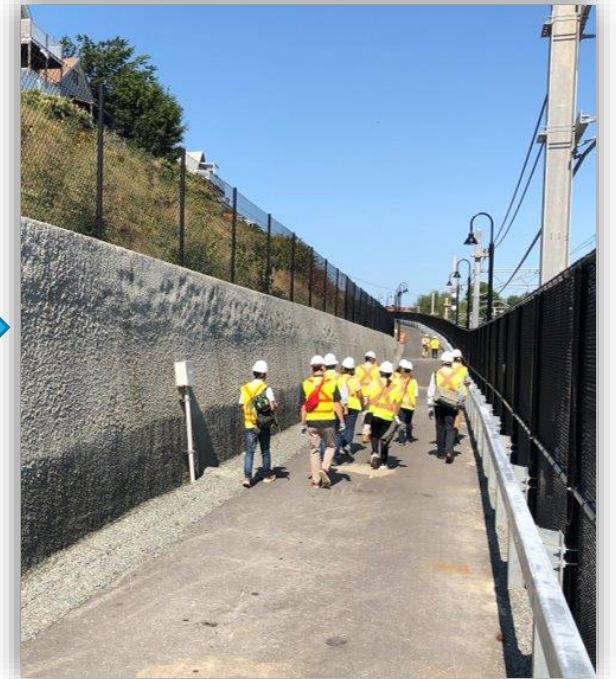
Current Status:

- Union Square Branch is open for service
 - Union service will be on "D branch" with one-seat ride to Riverside via Kenmore Square
- Medford Branch currently scheduled for opening end of November
 - Medford service will be on "E branch" with one-seat ride to Heath via Longwood Medical
- Medford Branch currently in "pre-revenue testing"
 - Trains are running on regular schedules without passengers
- Community Path opening planned ~2 months after train opens
 - City will operate & maintain the Community Path Extension
 - It will look and feel quite different from the existing Community Path
 - First winter snowplowing will be a new experience, despite our planning
 - Please be patient and empathetic to our great DPW teams as we learn
- Safety and accessibility upgrades are underway at Ball Square station
 - Crosswalk upgrades were completed at Broadway / Winchester in summer 2022
 - Crosswalk upgrades are currently in construction at Broadway / Boston / Rogers
 - Additional safety / accessibility upgrades are in planning stage

Existing Path
Cameron to Lowell



New Path
Lowell to Lechmere



Mobility Division: Safety Upgrades for Holland Street



The City of Somerville
Mayor Katjana Ballantyne
Office of Strategic Planning and Community Development

Protected bike lanes, crosswalk improvements, traffic calming, and parking changes coming to Holland Street

The City is redesigning Holland Street to include protected bike lanes from Teele Square to Buena Vista Road in addition to reconstructing sidewalks, repaving the street from Claremon Street to Simpson Avenue, and implementing safety improvements such as raised crosswalks, pedestrian refuge islands, and expanded bus stops. The new pavement markings will be implemented this fall after repaving is complete. The new design maintains parking on one side of Holland Street, but restricts parking on the other side in order to create protected bike lanes. Meters and loading zones will also be added to side streets.

For full designs of Holland Street visit:
somerillema.gov/hollandstreetdesign

For construction updates, subscribe to City Alerts at somerillema.gov/alerts

Questions? Email
transportation@somerillema.gov
or call 311 at 617-666-3311



City Flyer, Fall 2022
<https://voice.somerillema.gov/hollandandcollege>



Parking Type	Number of parking spaces	
	Pre-Construction	New Proposal
Metered	8	15
10, 15, or 30 Minute	1	0
2 Hour Except by Permit	18	0
Metered / Loading Zone	0	3
Accessible	0	1
Total	27	19

From Teele Square to Claremon Street, the new design retains parking on the north side of the street and restricts parking on the south side of the street. The north side parking is located seven feet from the curb, with a westbound protected bike lane against the curb. When parklets are in operation, the seasonal outdoor dining would remain at the curbside and the bike lane would go around it. In the wintertime, the parklet would be removed and the bike lane would be on the curbside. Parking is currently planned as mixture commercial loading zones, accessible parking, metered parking and overnight resident parking.

Raised crosswalk construction, October 2022



Engineering Division

BRIAN C. POSTLEWAITE, DIRECTOR OF ENGINEERING

Street Construction



- Left to Right:
 - Davis Square Crosswalk and Accessible Curb Ramp Repair
 - Speed Humps
 - Kidder Pedestrian Island



Lead Service Line Replacement Program

The City of Somerville has received funding through the Massachusetts Water Resources Authority's (MWRA) Lead Loan Program to replace the entire length of a property's lead or other non-copper water service line, at no charge to the property owner.

In 2019, 450 addresses were identified by the Water Dept with a lead water line.



In 2021, the City replaced 58 water lines and identified 11 that were previously replaced by property owner.

In 2022, the City replaced 102 water lines and identified 23 that were previously replaced by property owner.

The City is aiming to replace 100+ services in 2023, please visit somervillema.gov/leadservices to see if your water service line is eligible for a no-cost replacement.

Questions? Please email leadservices@somervillema.gov.

Combined Sewer System Improvements Capital Investment Plan

- Drainage & Water Quality Master Plan
 - <https://voice.somervillema.gov/city-wide-drainage-and-water-quality-master-plan>
- Combined Sewer Overflow Long Term Control Plan
 - <https://www.somervillema.gov/cso>

City of **Somerville**

Combined Sewer Overflow (CSO) Control

MWRA and the Cities of Cambridge and Somerville have implemented a system for rapid reporting of CSO discharges to the Alewife Brook.

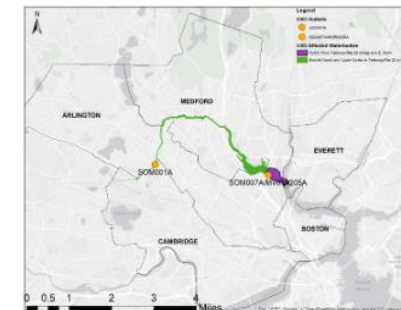
[CSO Activation Notifications](#) [Annual CSO Progress Update](#) [Learn About CSOs](#) [Annual Reports](#) [CSO Long Term Control Plan](#)

CSO Activation Notifications

Combined Sewer Overflow (CSO) Event on October 14, 2022 at 8:15 A.M. at SOM-001A on the Alewife Brook

Public Health Warning: Public health officials recommend avoiding contact with water bodies during rainstorms and for 48 hours afterwards, as there may be increased health risks due to bacteria or other pollutants associated with urban stormwater runoff and CSO discharges.

[SUBSCRIBE TO SOMERVILLE CSO ACTIVATION & DISCHARGE NOTIFICATIONS](#)



Contact Information

Lucica Hiller
Stormwater Program Manager

Email
lhiller@somervillema.gov

[EMPLOYEE DIRECTORY >](#)

CSO - The Latest

The Latest

The City of Cambridge, the City of Somerville, and the Massachusetts Water Resources Authority are collaborating on CSO Control plans to protect and improve our water resources. The first joint public meeting to inform about combined sewers, combined sewer overflows (CSOs), and CSO controls took

Racial and Social Justice Department

DENISE MOLINA CAPERS, DIRECTOR

ADRIENNE POMEROY, ADA COORDINATOR



Racial and Social Justice Department

The Department of Racial and Social Justice (RSJ) leads the City of Somerville's equity efforts and collaborates with city departments, constituents, and stakeholders to eliminate the institutional and structural systems that create racial inequities, social disparities, and injustices.

Developing the RSJ Department (Est. in 2021)

■ Social media – Twitter and Facebook



@somerville_rsj



facebook.com/somerville.rsj

■ New Hires:

1. RSJ Coordinator – Amanda Nagim-Williams
2. Community Engagement Specialist – Leonor Galindo
3. Public Information Officer – Haakon Brooks



RSJ Youth League findings
November 2022

Psychological First Aid

Hate/Bias Incidents
November 2022

Reimagining Public Safety

Building knowledge

Staffing and Operations Analysis (March)
Community Visioning Focus groups (August)
Reimagining Policing and Public Safety Perception Survey (September)

Building Capacity

RSJ Community Ambassadors to be announced October 2022

Building Awareness

Reimagining Policing and Public Safety Micro Webpage November 2022

RSJ Fund (Grant Program)

- The purpose of the Racial and Social Justice Fund is to provide a sustainable and enduring source of funding to dismantle systemic racism and social inequality.
- Focus groups November 2022

Civilian Oversight

- Task Force Members – November 2022

Commissions

- Open call for commissioners, 4 seats each: HRC, SCPD, Women's Commission

ADA – Americans with Disabilities Act

ADA Internal Survey

- Majority of surveyed leadership staff has some to working knowledge of ADA.
- Informs professional development for City staff around ADA.

Fire Department and Police Department - Training

- Fire Department – October 2022
- Police Department - TBD

ADA Community Survey - November 2022



Somerville Police Department

CAPTAIN JIM DONOVAN

A solid blue horizontal bar at the bottom of the page.

SPD Status Update

Community Policing Unit

- Initial program composed of 14 officers which fell to 7 officers. SPD received Regional Community Policing Award in 2017.
- Update: Officers reassigned to patrol to meet staffing of patrol cars; unit no longer exists.

School Resource Officers (SROs) & STEPS Program

- Previously up to 3 SROs were assigned to Somerville schools (2 at SHS). The STEPS program involved up to 20 officers visiting students in a relationship-building capacity.
- Update: SROs reassigned to patrol as program was paused based on School Committee vote. STEPS program was eliminated

Accreditation

- SPD was re-accredited by the Massachusetts Police Accreditation Commission (MPAC) on June 21, 2022. Accreditation reflects the use of best practices in areas of police management, operations, and technical support activities.
- SPD met 382 standards to achieve reaccreditation; audit takes place every 3 years to ensure compliance.

Police Reform

- Mandatory certification of all Officers by Massachusetts Peace Officer Standards & Training Commission (POST), an independent state entity composed of 9-members (6 non-LE) appointed by the governor and attorney general. Re-certification or de-certification mandated every 3 years.

Ward 6 Crime: Index Crime Trends

Citywide:

- Index crime increased 10% over one year and 11% over two years.

Ward 6:

- Index crime increased 5% (7 incidents) over one year and decreased 4% (6 incidents) over two years.

Note that Index Crime is composed of 8 offenses: Homicide, Rape, Aggravated Assault, Robbery, Burglary, MV Theft, Larceny, and Arson.



Index crime statistics based on previous 12 months (9/1/21 – 8/31/22) year-over-year.

Ward 6 Crime Prevention

Residents:

- **Car Breaks:** Always lock your vehicle.
- **MV Theft:** Never leave your vehicle running without occupants, even when making a quick stop.
- **Theft of MV Parts:** Call 911 to report any suspicious persons, particularly between 1:00 AM and 5:00 AM.
- **Bike Theft:** Be wary of cable locks - they are easily cut with wire cutters. Never lock your bike to wooden posts that can be broken. Keep a file of bike serial numbers and photos.
- **Package Theft:** Have mail carriers deliver packages to a location less visible from the street (side or rear door / porch).

SPD:

- Area Cars deployed based on temporal patterns and geographical hot spots.
- Increase residents' awareness of crime prevention methods.
- One Detective assigned all catalytic converter thefts for continuity and case linkage. Member of regional taskforce.
- Investigative resources dedicated to cases of violent crime such as robbery, sexual assault, hate crime, and shootings. Property crime assigned based on Criminal Investigation Division (CID) bandwidth and case solvability.

	Contact Name	Service	Contact Info.
Substance Misuse	MA Substance Use Hotline	Treatment program info	800-321-5050
	Cambridge Health Alliance	Walk-ins Tue. 11:30; MA Health accepted	617-591-6051
	Caspar First Step Outreach - Wet shelter & Community Outreach Van	Assist in accessing detox.	617-661-0600
	Riverside Community Care	Outpatient; MA Health accepted	617-623-3278
	North Charles	Maintenance therapy; MA Health only	617-661-5700
	Column Health	Counseling, medication assisted treatment	339-368-7696
	Learn 2 Cope	Family support; Mon. 7 PM	1575 Cambridge St, CAM
	Family Anonymous	Family support; Tue. 7 PM	121 Washington St, MEF
	SPD, COHR Unit Therapeutic Supports, Jail Diversion	Therapeutic Supports; Jail Diversion	617-625-6600 ext. 7281
Mental Health	Cambridge Health Alliance	Inpatient & outpatient services	Adults: 617-591-6033 Juveniles: 617-665-3458
	BEST Team	Psychiatric emergency services; MA Health	800-981-4357
	Riverside - Child Guidance Center	Juvenile / family services	617-354-2275
	Neighborhood Counseling & Community Services	Counseling, skill & strength-based strategies	781-600-6074
	SPD, COHR Unit Therapeutic Supports, Jail Diversion	Therapeutic supports; Jail diversion	617-625-6600 ext. 7281
	Somerville Health Department	Supportive services	www.somervillema.gov/support
	Psychology Today provider finder	Find a provider	www.psychologytoday.org
	INTERFACE Referral Service	Find a provider; Monday- Friday 9-5pm	888-244-6843 https://interface.williamjames.edu/
Domestic Violence	RESPOND	Shelter, crisis hotline, services, education	Hotline: 617-623-5900, Services: 617-440-7267
	Maureen DiPaolo, SPD Family Services	Victim Witness Advocacy	617-625-1600 x 7279
Sexual Assault	BARCC (Boston Area Rape Crisis Center)	Free legal consultation, counseling, and education for survivors and family members of survivors	Hotline: 800-841-8371 https://barcc.org
Additional	De Novo	Free civil legal assistance and psychological counseling specializing in work with immigrants and refugees, services based on income eligibility	617-661-1010 Denovo.org

Substance Misuse, Mental Health, Domestic Violence, and Sexual Assault Support

Contact SPD (non-emergency)

Questions or concerns:

Police@police.Somerville.ma.us

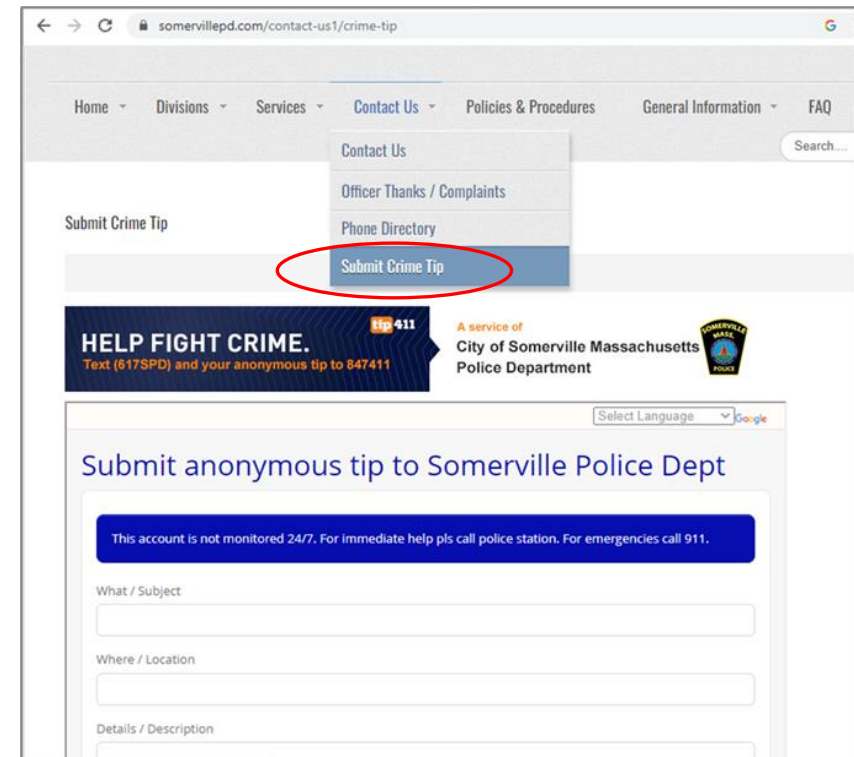
Submit an anonymous crime tip:

<https://somerillepd.com/contact-us1/crime-tip>



Community Meeting slides:

<https://www.somervillema.gov/communitymeetings>



Still have questions?

Email cm@somervillema.gov

Thank you.
