



# Mystic WaterWorks

Somerville Housing Authority



# Development Team

- Somerville Housing Authority
- DiMella Shaffer – Frank Valdes
- Historic Consultants – MacRostie Historic Advisors
- Development Consultants – New England Communities Inc.
  - Marc Slotnick – Dan Gaulin – Carole Collins

# Senior Campus

Capen Court – VNA Assisted Living Facility



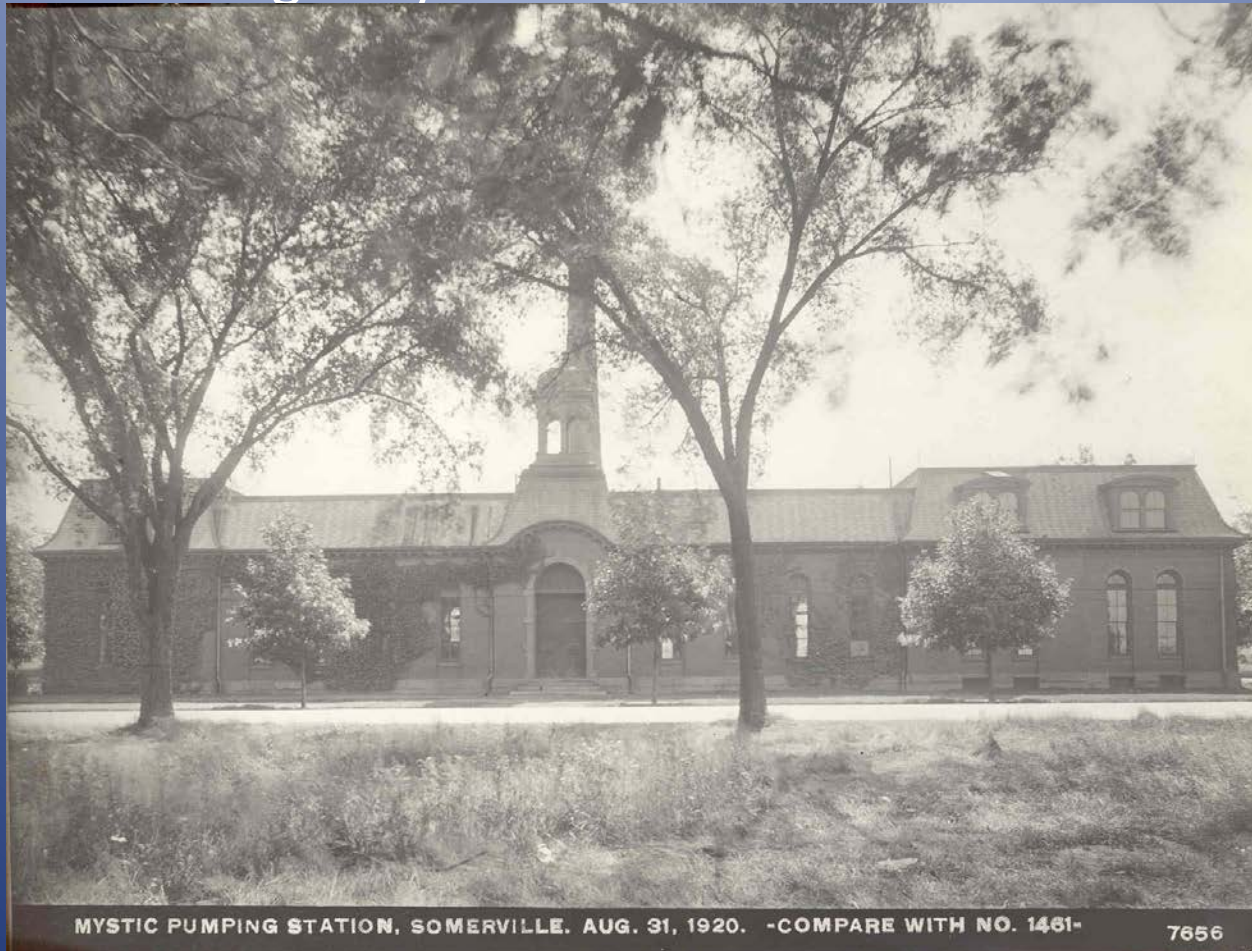


# The Senior Campus Model

- Somerville Housing Authority and the Visiting Nurses Assoc. began development of the “Senior Campus” in 2004
- The benefits include on-site supportive services – activities - participation in informative events – low-cost prepared meals – shared common spaces.
- Waterworks residents would share in all services and activities.
- Reuse of significant historic structure.
- Improvement of Somerville entryway.
- State Senate and Reps fully support roadway and crosswalk improvements
- Current Capen Court Waitlist for Somerville residents 197 Area Residents 505
- Address the documented need for more affordable housing options.

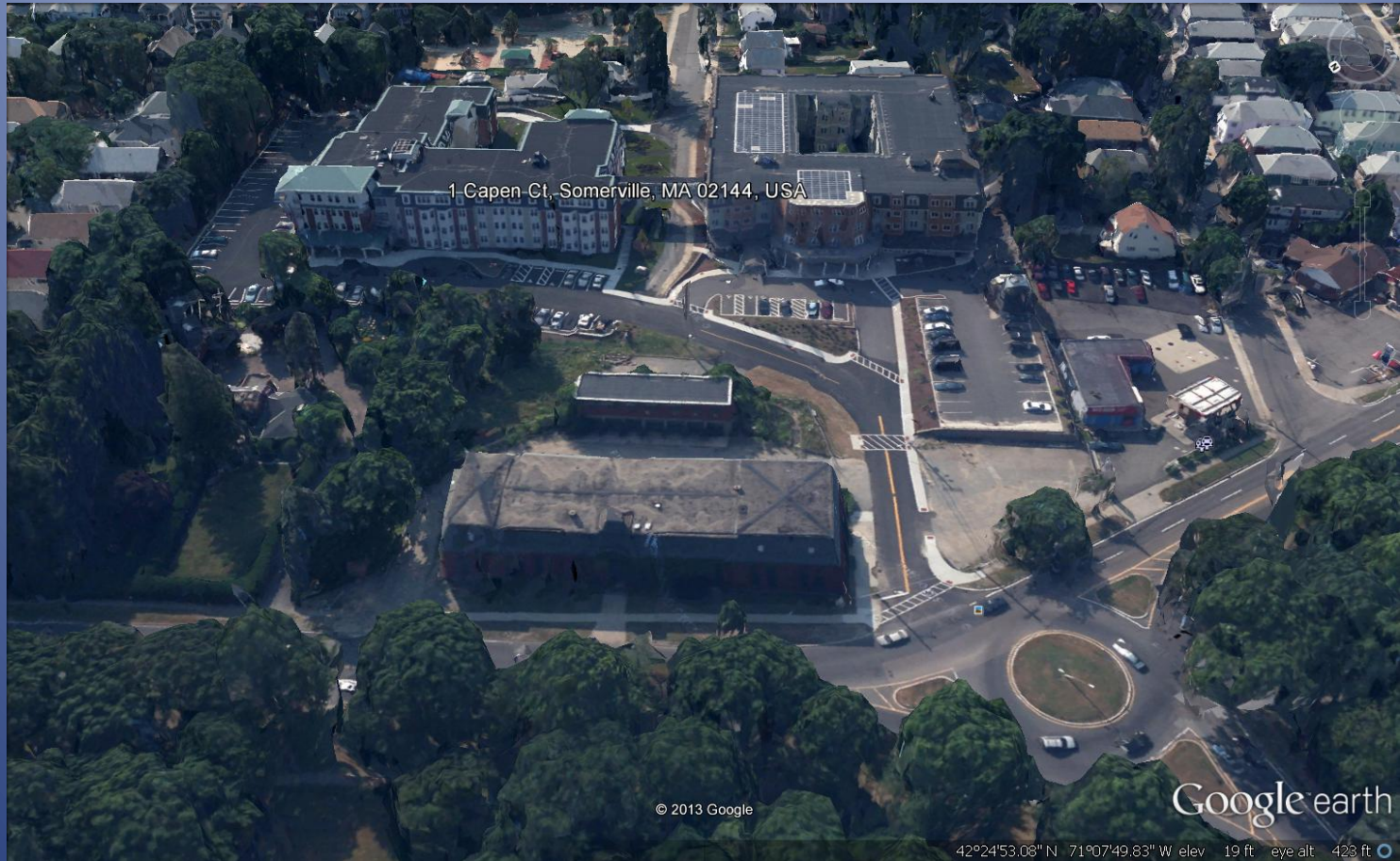
# Rare Opportunity to Repurpose Historic Building

Originally structure built in 1864 -





# Area Amenities & Location



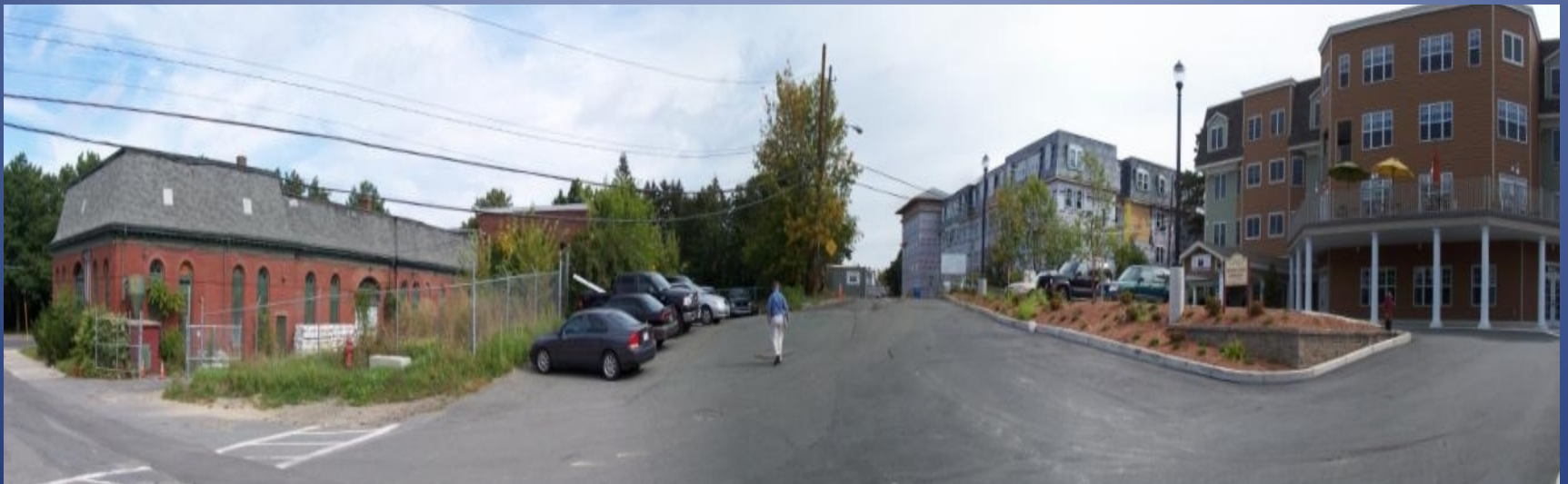
Repurposing this building will allow the community to enjoy easy access to lovely walking paths along the scenic Mystic River Greenway and eventually the new Green Line.

# Preservation – Restoration – Conservation





# Building a Community



Improving Main Entryway – Community Access – Pedestrian Safety

Providing 25 affordable housing units for elderly or disabled families