
Union Square Roadway and Streetscape Improvements

Second Community Meeting

October 21, 2009
Argenziano School



Agenda

- **Background**
- **Existing conditions**
- **Outstanding issues from July meeting**
 - **Off-street parking**
 - **Transit**
- **Webster Ave./Prospect St.**
- **Bow Street**
- **Heart of Square – Option 1**
- **Heart of Square – Option 3**
- **Next Steps**

Background



UNION SQUARE
ROADWAY & STREETScape IMPROVEMENTS

Focus Group

- **Michelle Apigian** – Resident
- **Kellyann Binari** – Somerville Disabilities Commission
- **Eric Fellingner** – Resident
- **Shawna Giles-Smith** – Local business
- **Mimi Graney** – Union Square Main Streets
- **Cindy Larson** – Local business
- **Jim McGinnis** – Resident
- **Alan Moore** – Somerville Bike Committee
- **Nancy Phillips** – Local activist
- **Larry Slotnick** – Livable Streets Alliance

Consultant Team

- **Howard/Stein-Hudson Associates, Inc.**
 - Lead consultant – transportation planning, traffic engineering, roadway design
- **Heimarck & Foglia, LLC**
 - Landscape/streetscape
- **Design Consultants, Inc.**
 - Survey, drainage/utility design
- **Von Grossmann & Company**
 - Urban design, pedestrian/bicycle accommodation
- **Walker Parking Consultants**
 - Parking study, financing & operations
- **Ammann & Whitney**
 - Structural engineering - bridges

Goals and Objectives

- Enhance the pedestrian realm
- Promote equity among transportation modes
- Create more public space within right of way
- Provide intermodal transferability
- Green Union Square
- Establish gateways
- Improve wayfinding
- Reduce, manage, and/or redirect cut-through traffic (especially trucks)

Project Scope

- **Community process**
- **Analysis of existing conditions**
- **Development of concept alternatives**
- **Analysis & refinement of alternatives**
- **Preliminary design of selected alternative**

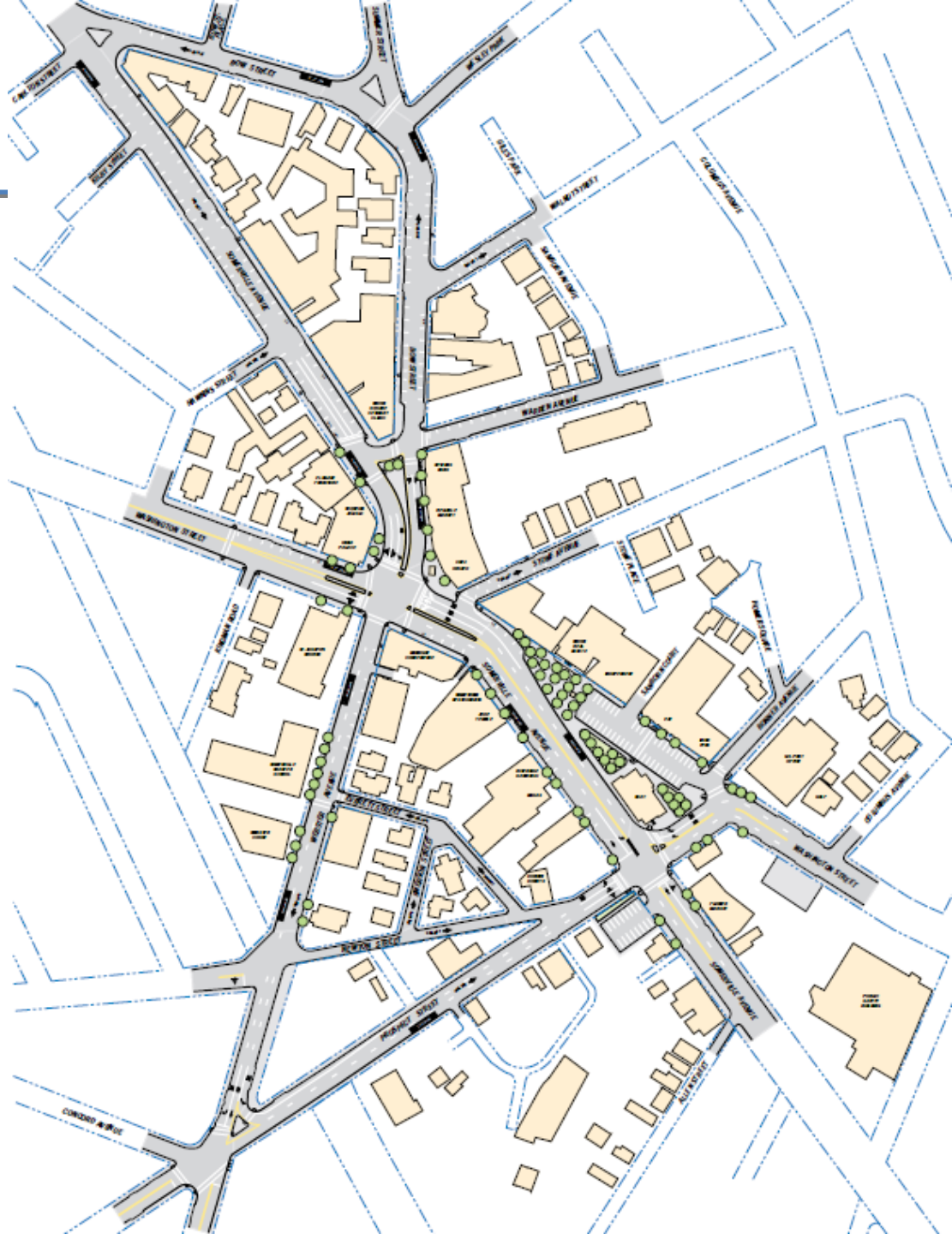
Existing Conditions



UNION SQUARE
ROADWAY & STREETScape IMPROVEMENTS

Limits of Work

UNION SQUARE ROADWAY & STREETSCAPE IMPROVEMENTS



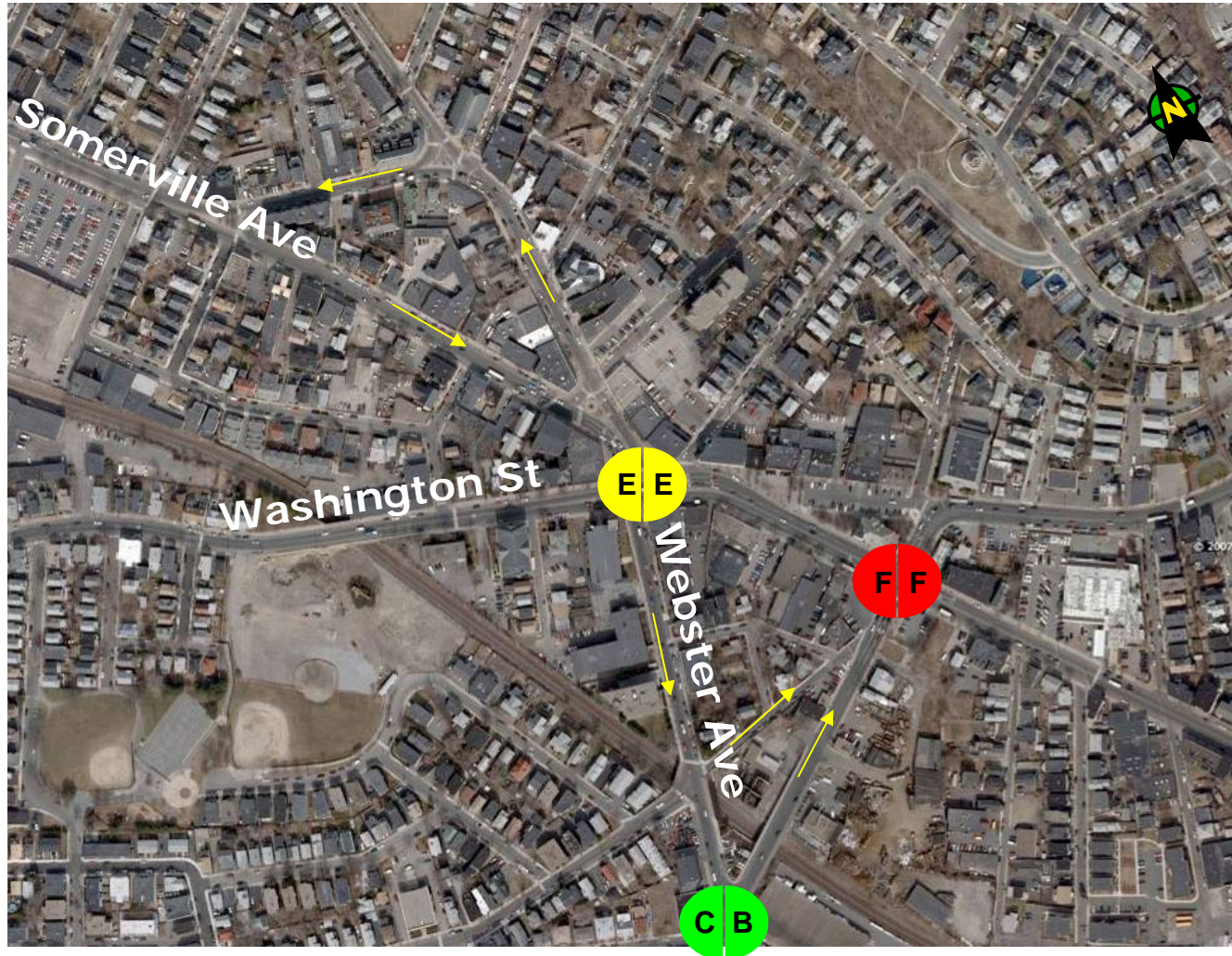
Existing Conditions

UNION SQUARE ROADWAY & STREETSCAPE IMPROVEMENTS

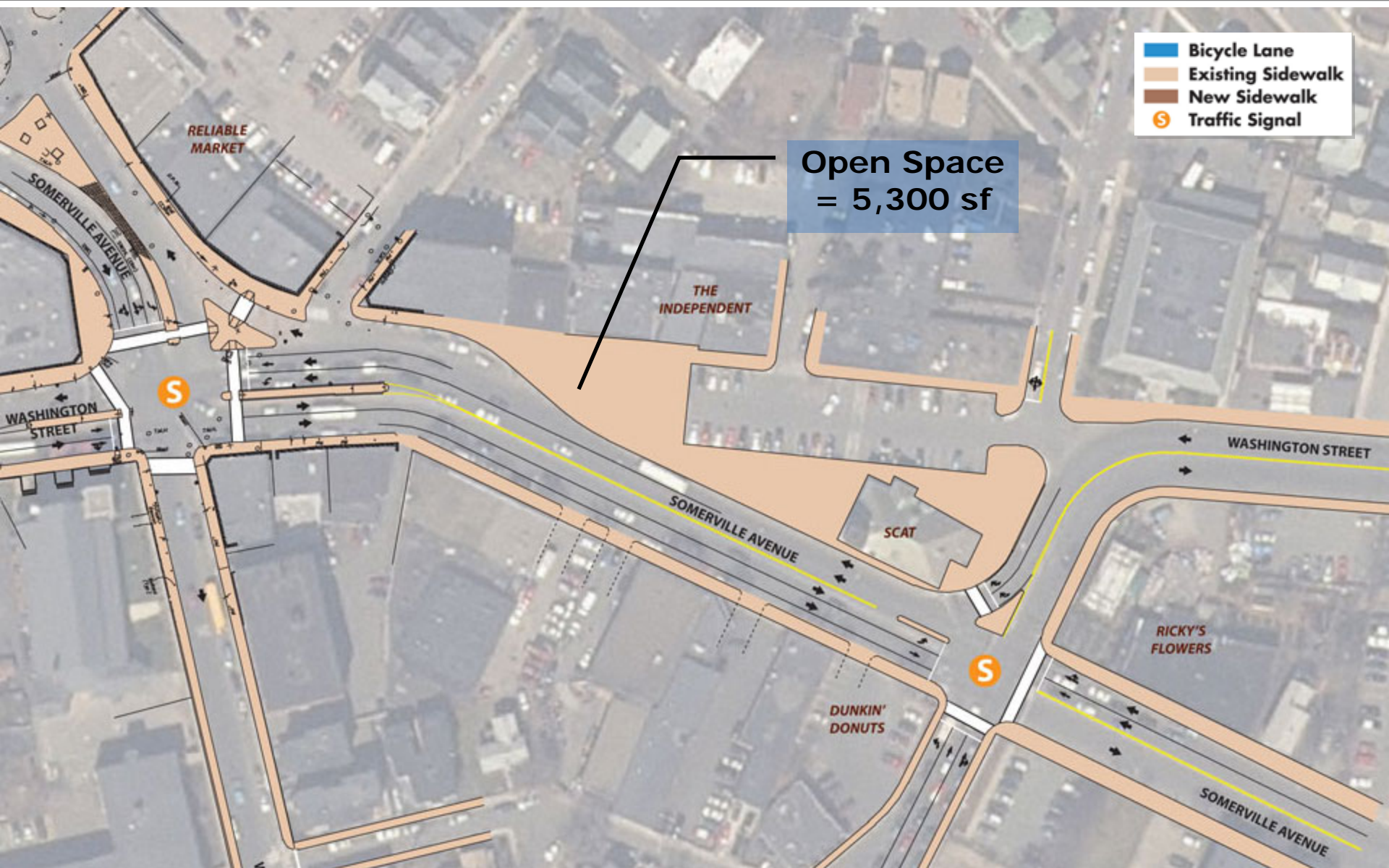


- Bicycle Lane
- Existing Sidewalk
- New Sidewalk
- Traffic Signal

Existing Conditions - Intersection LOS



Existing Conditions – Open Space



Existing Conditions – Open Space



Existing Conditions – Open Space



Existing Conditions – On-street Parking

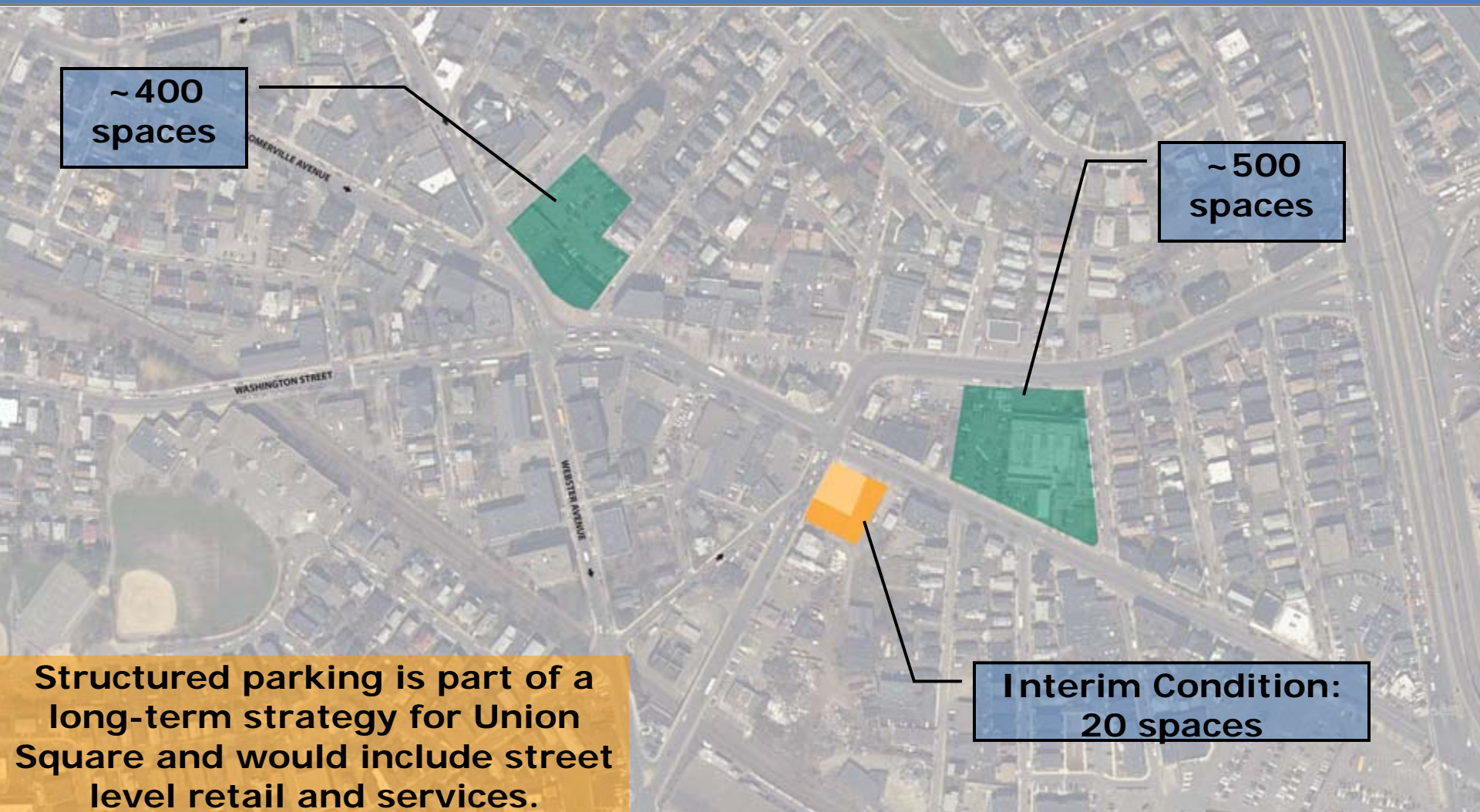


Off-street Parking



UNION SQUARE
ROADWAY & STREETScape IMPROVEMENTS

Future Off-street Parking Locations



Transit



UNION SQUARE
ROADWAY & STREETScape IMPROVEMENTS

Existing Bus Routes



Potential Bus Routes



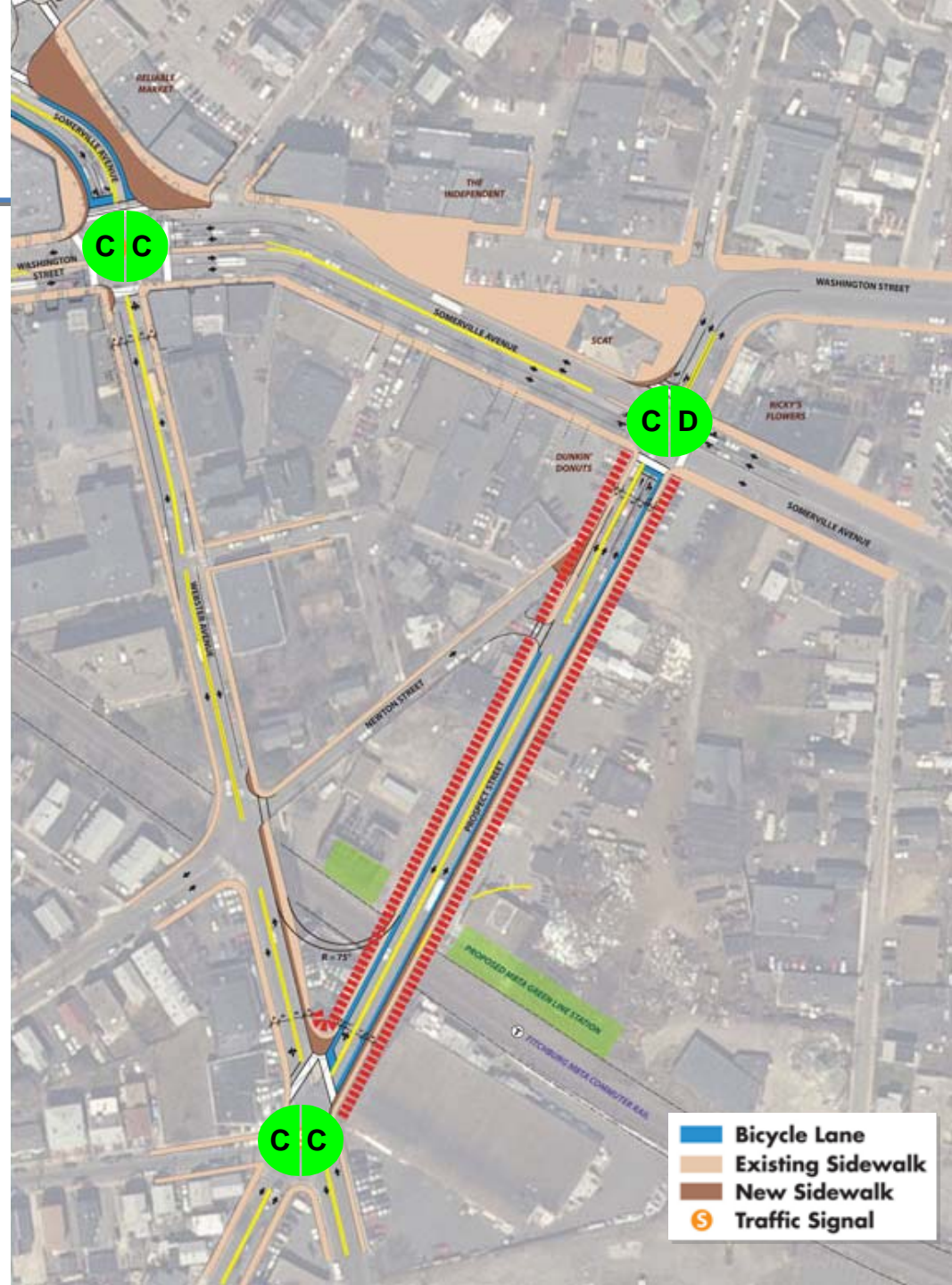
Webster Avenue & Prospect Street



UNION SQUARE
ROADWAY & STREETScape IMPROVEMENTS

Webster/Prospect 2-Way: Intersection LOS

UNION SQUARE
ROADWAY & STREETSCAPE IMPROVEMENTS



Webster/Prospect Two-way

- **Future additional open space – widened sidewalks on Prospect St**
- **Parking**
 - **Loss of parking on Webster Ave (approx. 3 spaces)**
 - **Add parking on Prospect St in long-term (approx. 37 spaces)**
- **Requires 3 new traffic signals**
- **Requires replacement of Webster Ave viaduct**

Bow Street & Somerville Avenue



UNION SQUARE
ROADWAY & STREETScape IMPROVEMENTS

Bow Street & Two-Way Somerville Ave

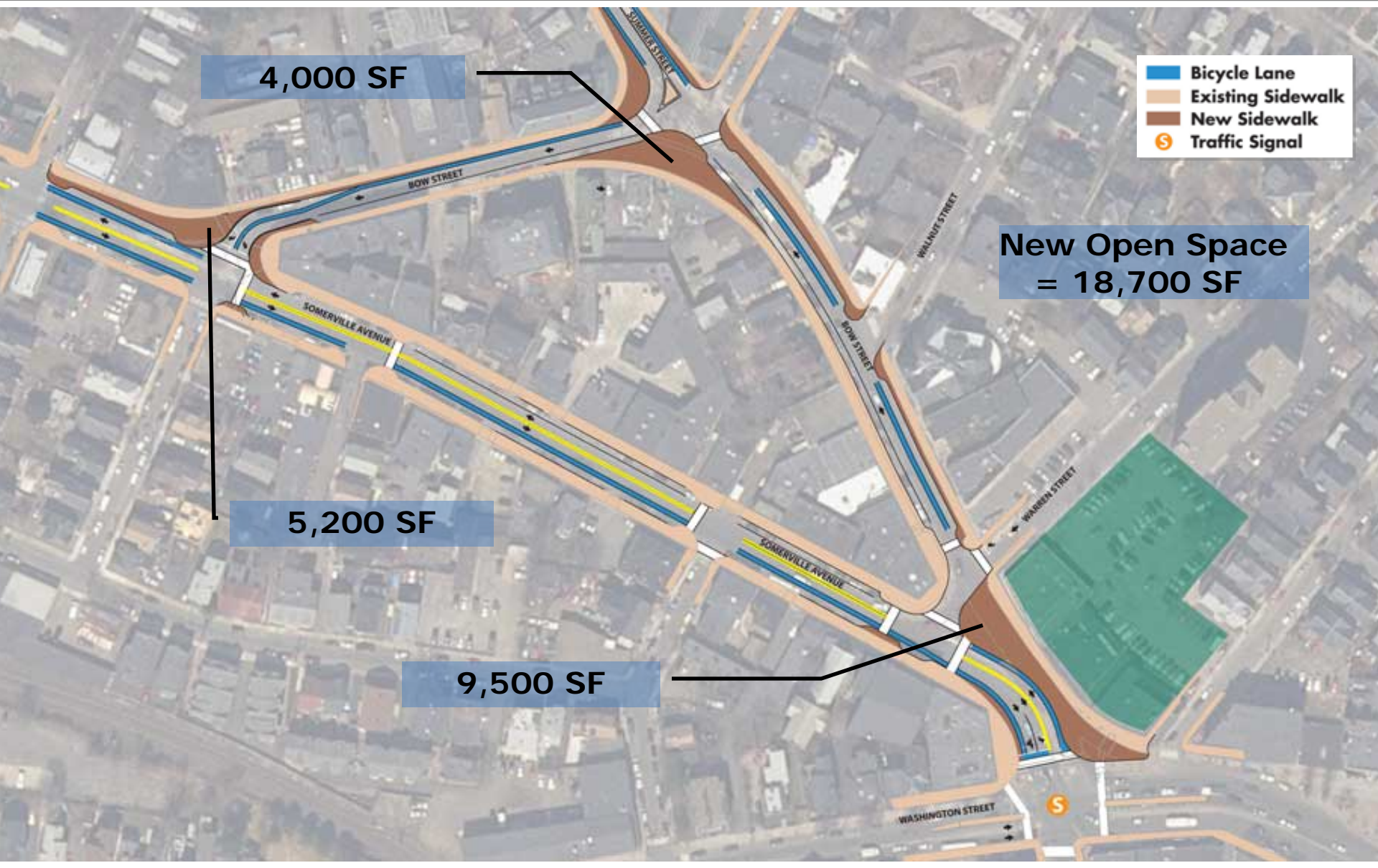


Bow Street/Somerville Ave – Bicycle Accommodation



- Bicycle lanes
- Bike boxes at signals
- Bicycle parking

Bow Street/Somerville Ave – Open Space



Bow Street/Somerville Ave - Parking



Parking

Existing = 61 spaces

Proposed = 57 spaces

Heart of Union Square



UNION SQUARE
ROADWAY & STREETScape IMPROVEMENTS

Option 1: Existing Conditions Modified

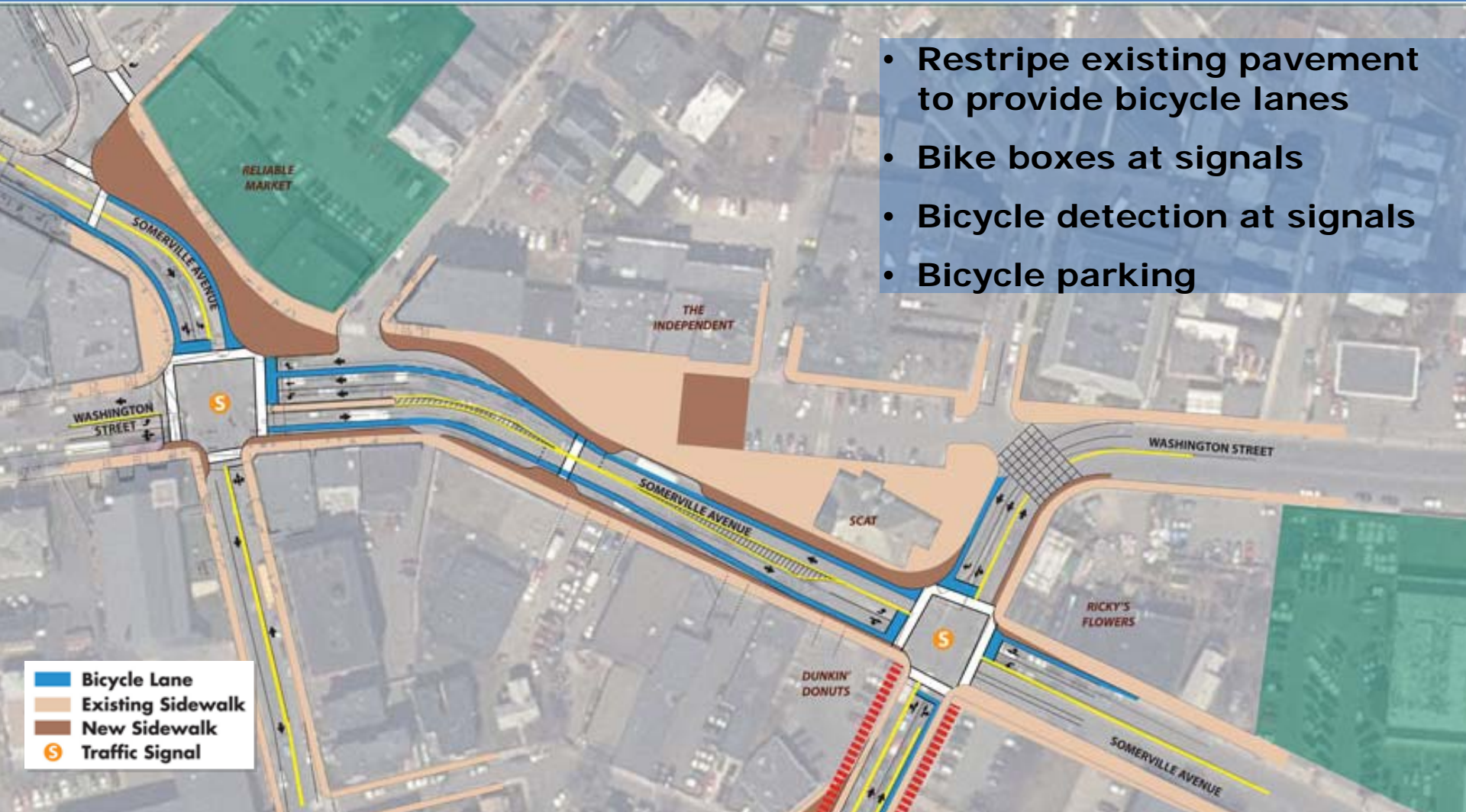


Option 1 – Intersection LOS



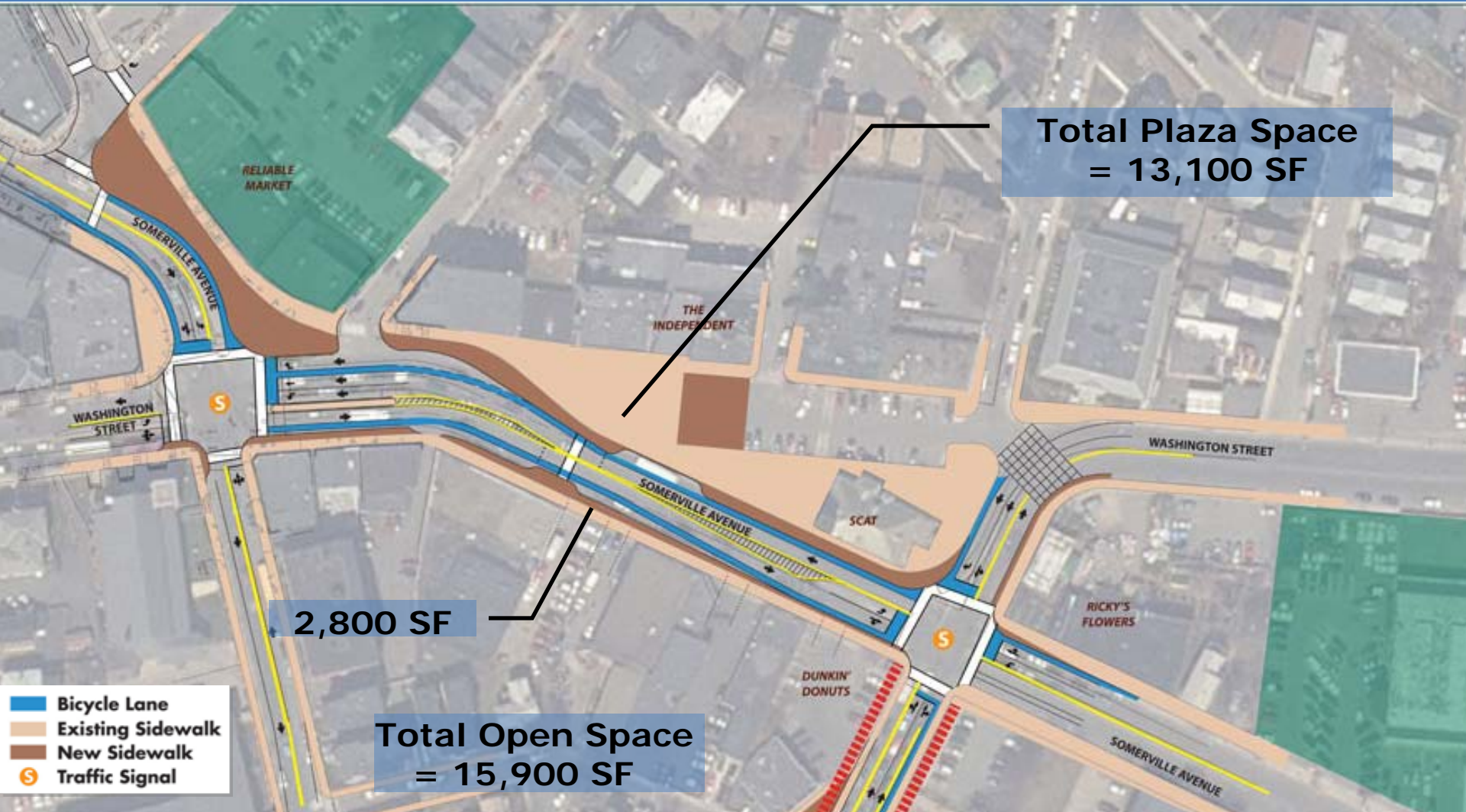
-  Bicycle Lane
-  Existing Sidewalk
-  New Sidewalk
-  Traffic Signal

Option 1 – Bicycle Accommodation

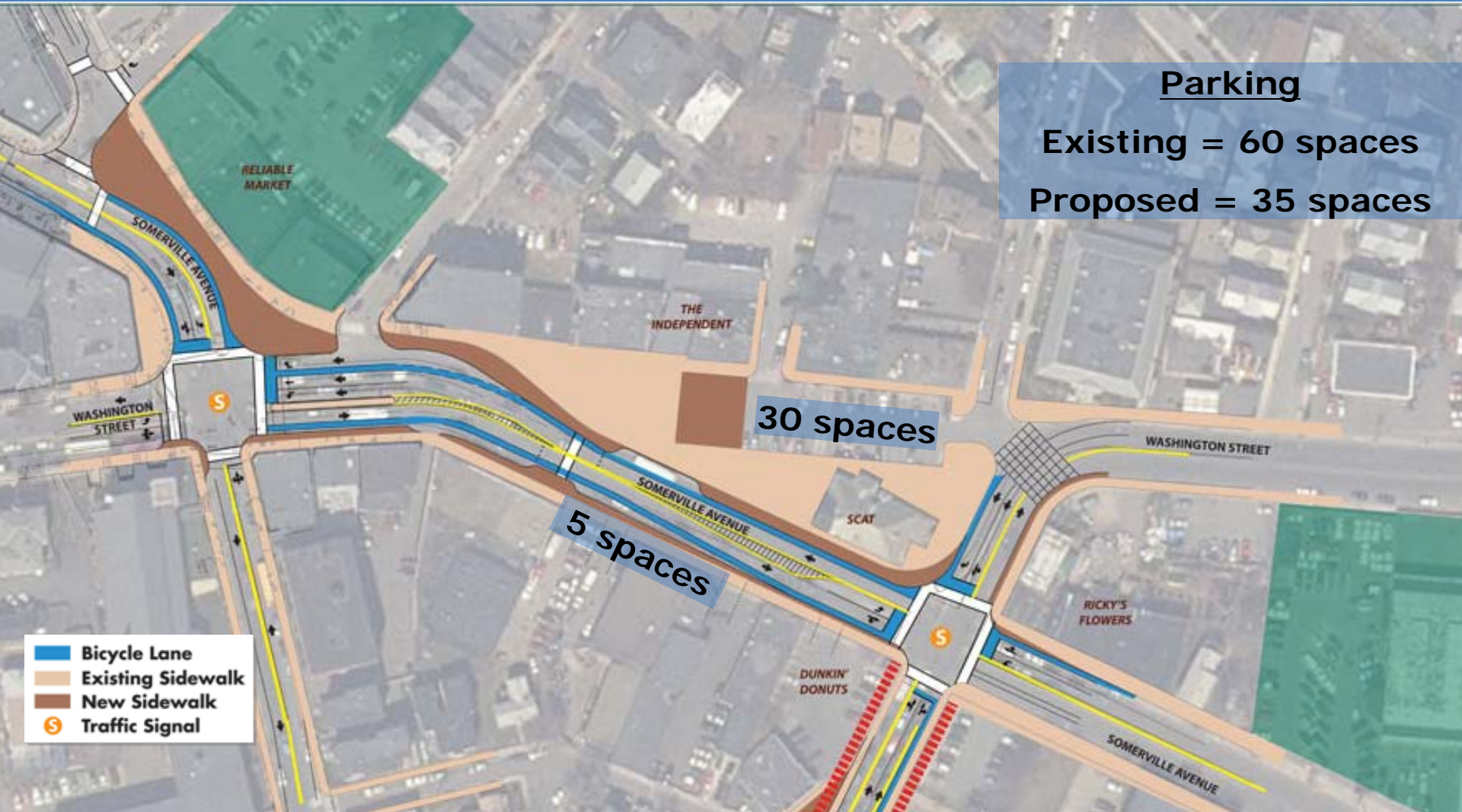


- Restripe existing pavement to provide bicycle lanes
- Bike boxes at signals
- Bicycle detection at signals
- Bicycle parking

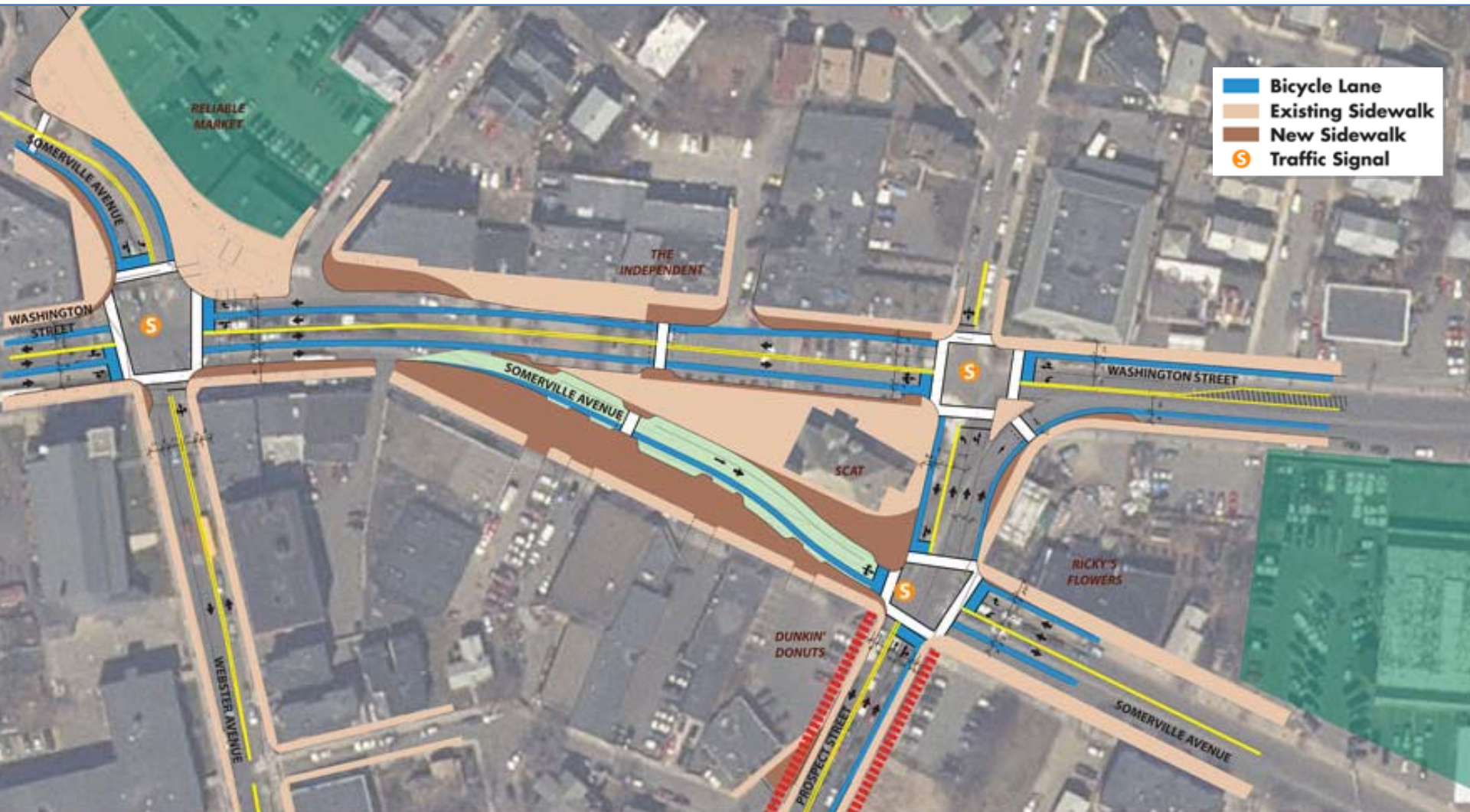
Option 1 – Open Space



Option 1 – On-Street Parking



Option 3: Washington St. 2-Way with Somerville Ave. Woonerf

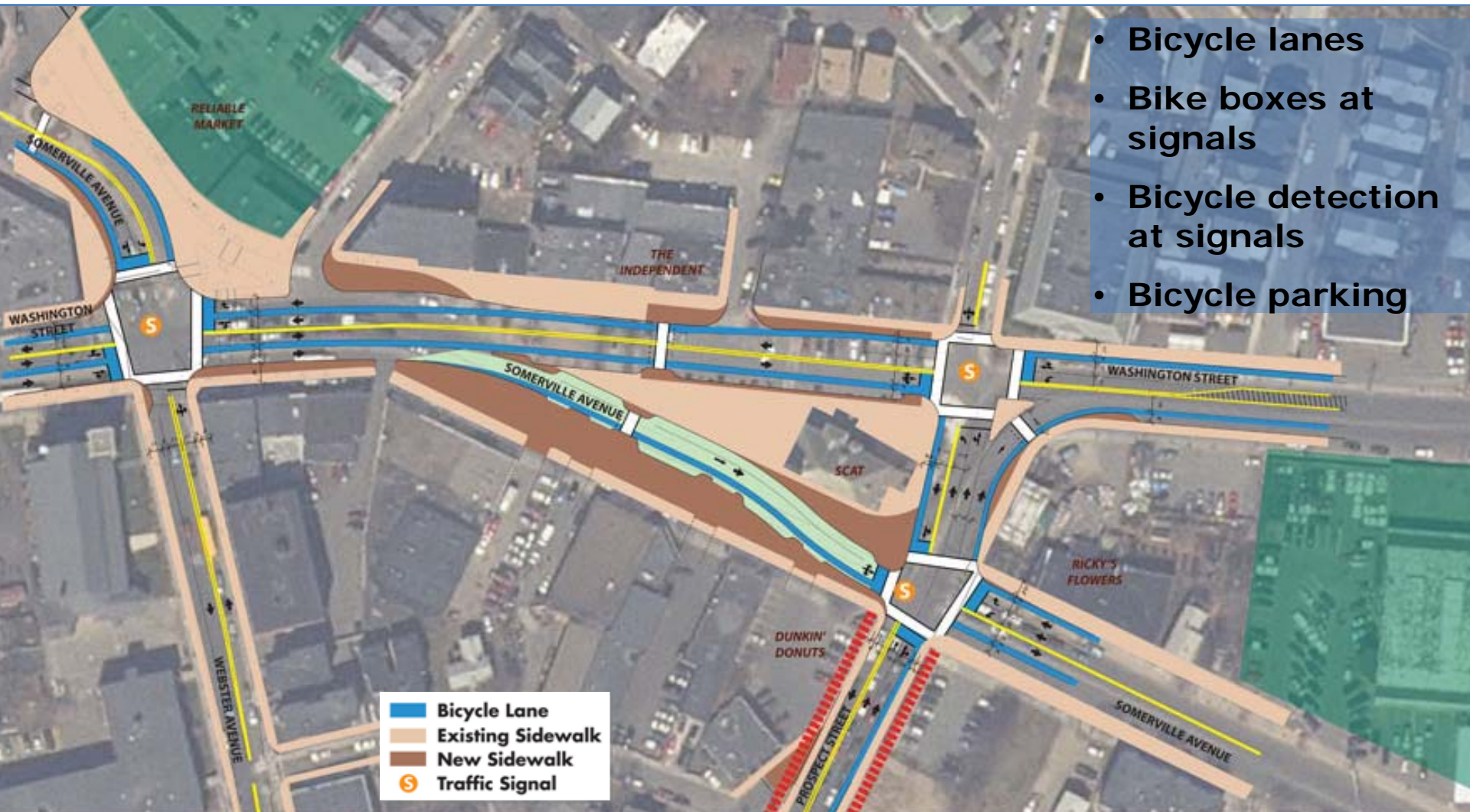


Option 3 - Intersection LOS

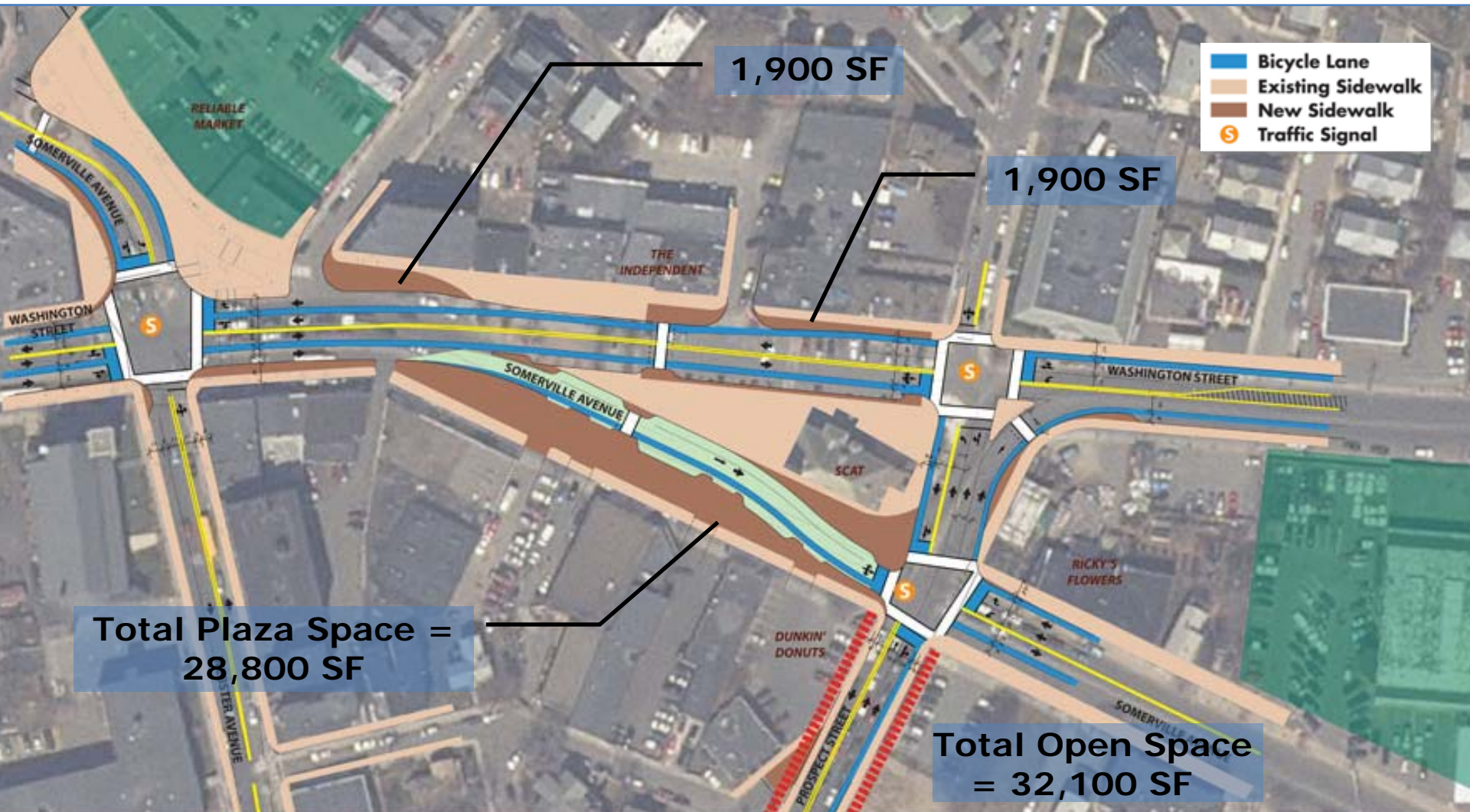


Option 3 – Bicycle Accommodation

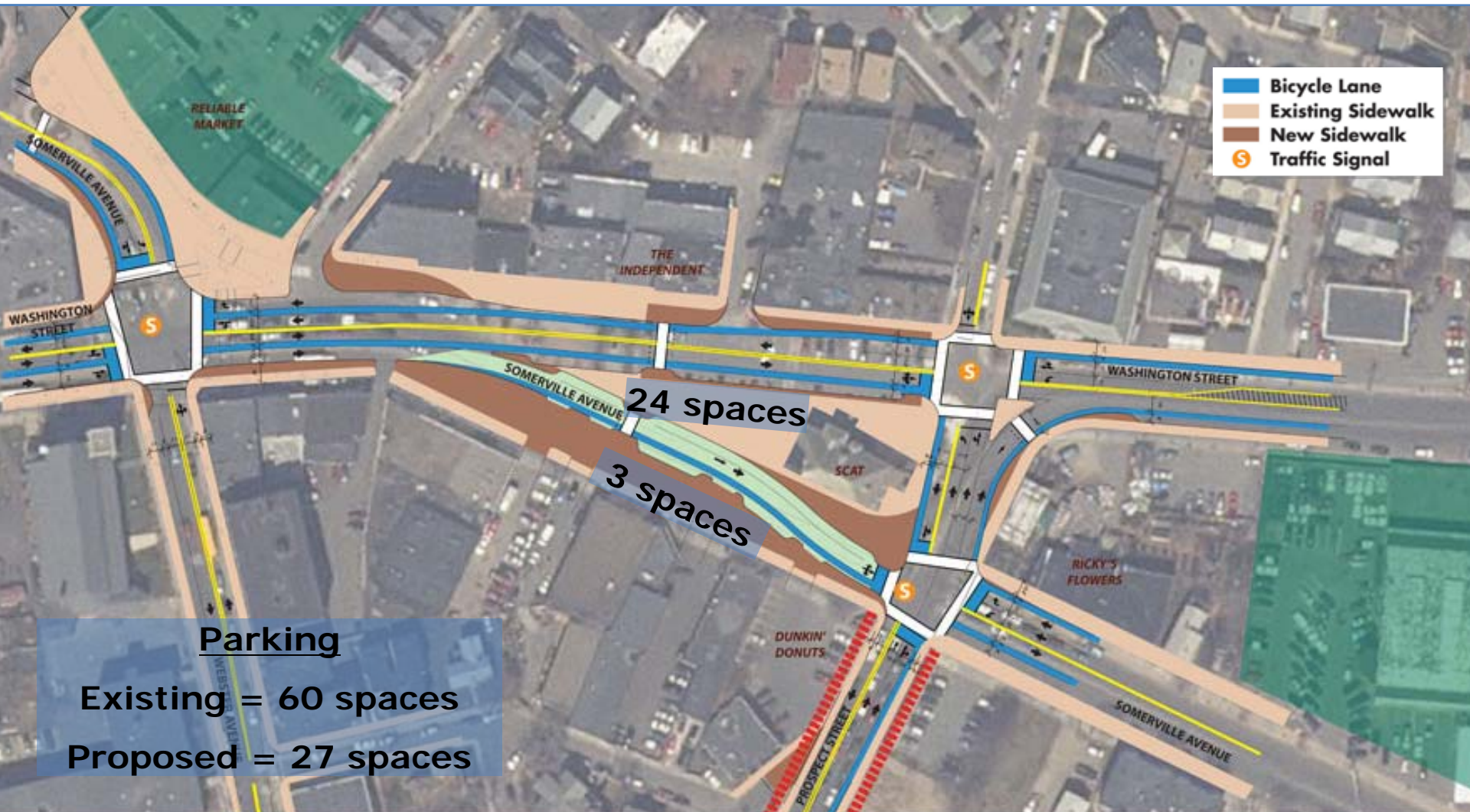
- Bicycle lanes
- Bike boxes at signals
- Bicycle detection at signals
- Bicycle parking



Option 3 – Open Space



Option 3 – On-Street Parking



Next Steps

- **This Contract**
 - Identify locally preferred alternative
 - Streetscape and amenity design
 - 25% design drawings – Spring 2010

- **Next Contract**
 - Full construction drawings
 - Project phasing plans

- **Project Financing**

Questions or Comments?



UNION SQUARE
ROADWAY & STREETScape IMPROVEMENTS

Contact: Rob May
Director of Economic Development
(617) 625-6600 x2524
RMay@somervillema.gov



UNION SQUARE
ROADWAY & STREETScape IMPROVEMENTS