

---

**Metropolitan Boston  
Sustainable Communities  
Program Work in Somerville**

*Jennifer M. Raitt  
Chief Housing Planner*

# Sustainable Communities Regional Planning Grant Program

- MetroFuture Implementation
- Sustainable Communities Regional Planning Grant for Metro Boston
  - Grant Summary and Status
  - Metro Boston Consortium for Sustainable Communities
  - Regional Housing Plan
  - Regional Analysis of Impediments to Fair Housing

# MetroFuture Housing Strategies

---

- 1. Develop coordinated regional and local plans for diverse housing production**
- 2. Increase affordable housing production in appropriate locations**
- 3. Diversify overall housing supply and affordability**
- 4. Connect residents to housing opportunities**
- 5. Ensure fair and accessible housing**
- 6. Preserve, maintain, and upgrade existing affordable housing stock**

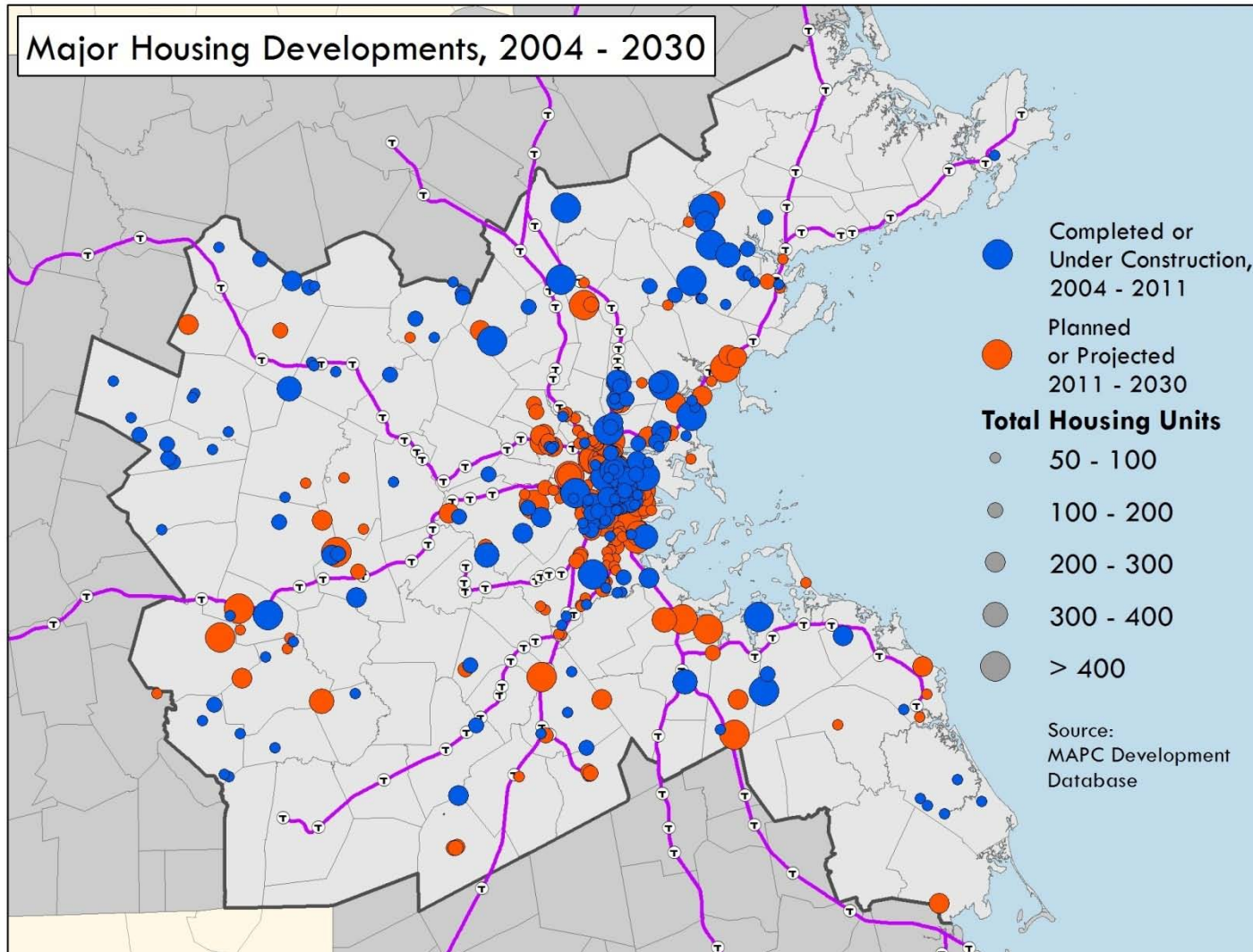
# RHP/ Fair Housing + Equity Plan Elements

---

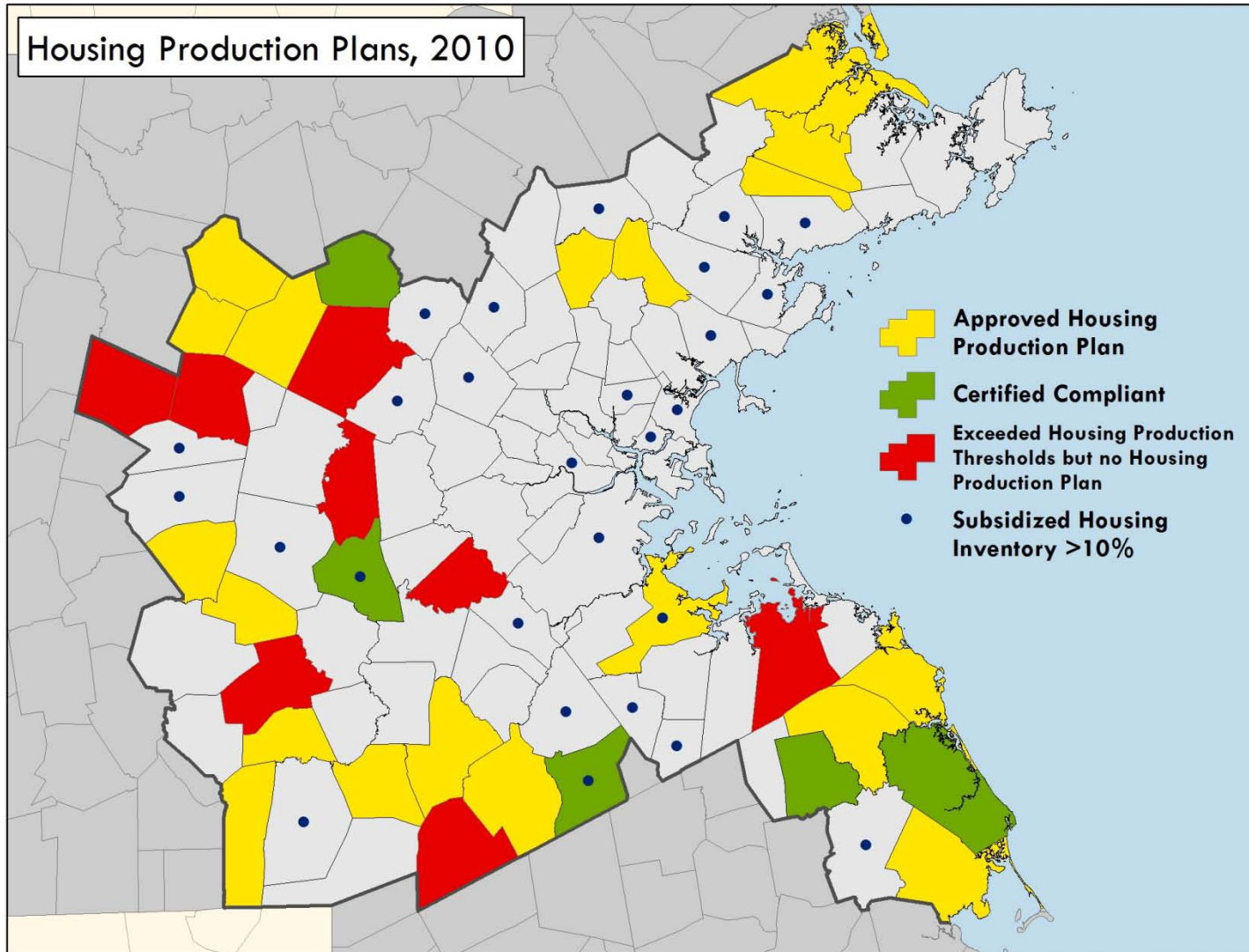
Both projects will collect and analyze data about housing needs in the region and the constraints and opportunities that enable or prevent attainment of local and regional housing goals.

- The RHP will recommend policies to encourage housing development and preservation that meets current and projected needs in an equitable manner.
- The RAI will recommend policies that influence housing development and preservation at all levels of the housing market, identifying specific activities and entities to address identified impediments.

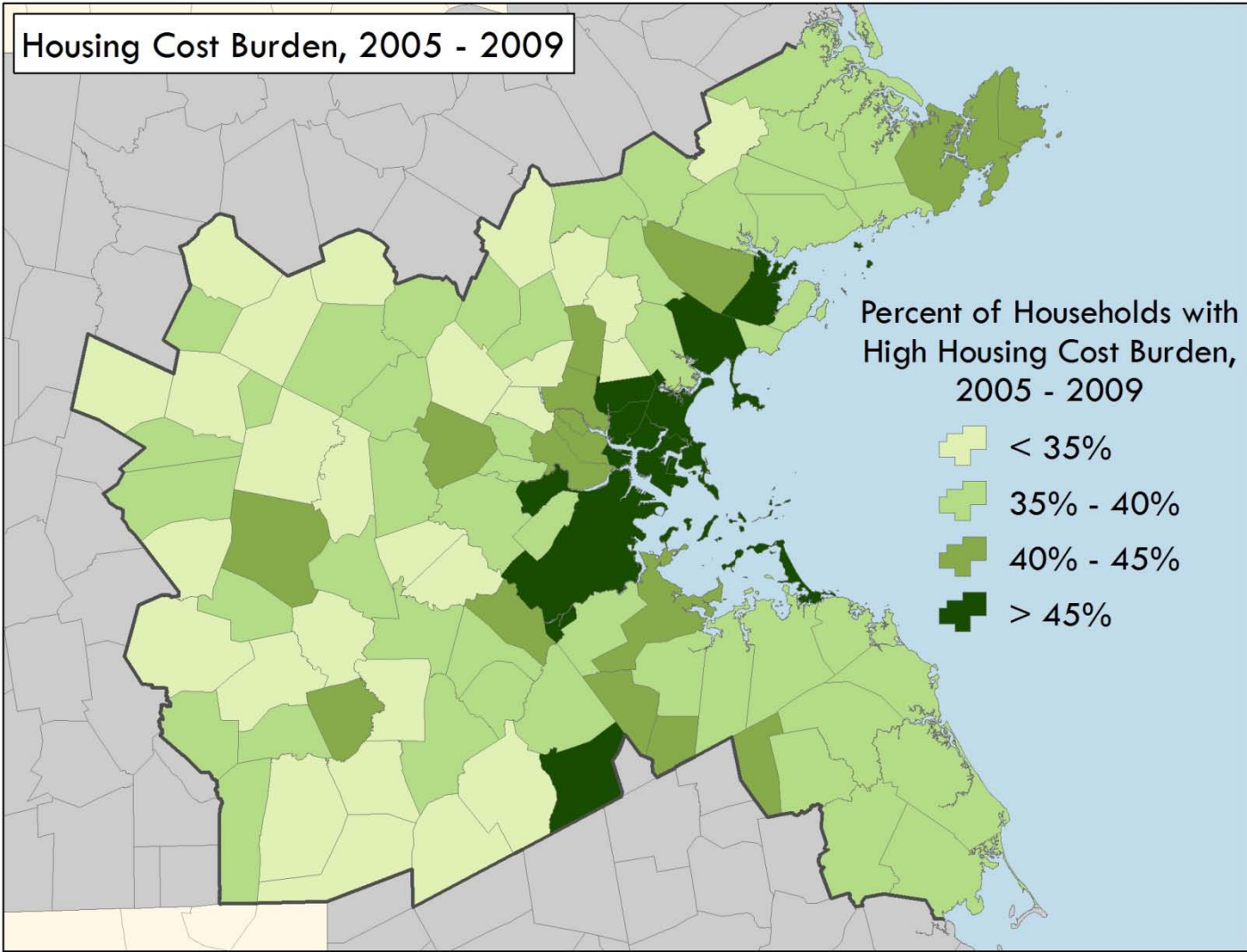
# Major Housing Developments Recently Completed and Planned



# Housing Production Plans, 2010



# Households with Moderate Cost Burden, 2005-2009



# Somerville Sustainable Communities Program

---

The Sustainable Communities work in Somerville will help to catalyze and support development and preservation in transformational areas of the city, while helping to manage change and stabilize neighborhoods in ways that advance equity and long-term sustainability.

# Somerville Sustainable Communities Program

---

The work is divided into three areas:

- 1) anti-displacement work, led by Somerville Community Corporation;
- 2) economic development work , led by MAPC with Somerville Transportation Equity Partnership; and
- 3) bicycle/pedestrian work, with MAPC and Friends of the Community Path.

# Somerville Sustainable Communities Program

---

Support Somerville Community Corporation to develop an Anti-Displacement Strategy and Tool Kit that

1. Shows how transit expansion might affect the demographics in and around proposed GLX stations.
2. Includes policy recommendations and techniques that draws upon SCC's and the City's experiences, MAPC's anti-displacement strategy research, and local and national sources of information about how best to manage neighborhood change.

# Somerville Sustainable Communities Program

---

Apply Toolkit locally, activities may include:

- a. Preservation of specific at-risk properties
- b. Revisions to housing policies
- c. Pursuit of state or federal funding
- d. Working with landlords, realtors, and lenders to discourage the displacement of low/moderate-income households and commercial tenants
- e. Creation and preservation of affordable housing units throughout the city to ensure anti-displacement targets are achieved.

# Somerville Sustainable Communities Program

---

Additional activities:

- a. Fiscal Impact and Social Return on Investment Tool
- b. Community Connectivity via the Community Path