

- LEGEND**
- OHW — OVERHEAD WIRES
  - ⊕ ELECTRIC MANHOLE
  - ⊞ CATCH BASIN
  - ⊗ DECIDUOUS TREE
  - ⊙ CONIFEROUS TREE
  - PL PLANTER
  - ⊕ FIRE HYDRANT
  - WG WATER GATE
  - GG GAS GATE
  - RD ROOF DRAIN
  - ⊙ LIGHT POLE
  - x 32.12 SPOT GRADE

**NOTES**

THE PURPOSE OF THIS PLAN IS TO SHOW THE EXISTING CONDITIONS OF THE LOCUS PARCEL FOR DESIGN PURPOSES. THIS PLAN IS THE RESULT OF AN ON-THE-GROUND INSTRUMENT SURVEY PERFORMED BETWEEN NOVEMBER 13, 1996 AND JULY 8, 2016, BY DESIGN CONSULTANTS, INC. (DCI).

ALL TIES FROM BUILDING TO BOUNDARY LINES ARE SHOWN FROM CORNER BOARDS.

LOCATION OF UNDERGROUND UTILITIES FEATURES SHOWN ARE THE RESULT OF SURFACE EVIDENCE AS LOCATED BY: FIELD SURVEY, AERIAL PHOTOGRAMMETRY, PLANS OF RECORD, INFORMATION FURNISHED BY THE RESPECTIVE UTILITY COMPANIES, AND OTHER AVAILABLE SOURCES. OVERHEAD WIRES DEPICTED HEREON ARE SHOWN FOR GENERAL LOCATION PURPOSES ONLY, ACTUAL WIDTH, TYPE, NUMBER, AND HEIGHT SHOULD BE FIELD VERIFIED PRIOR TO ANY SITE DESIGN WORK. THIS PLAN DOES NOT NECESSARILY DEPICT THE EXACT LOCATION OF ALL UTILITIES WHICH MAY EXIST AT THIS TIME WITHIN THE PREMISES SURVEYED. CALL DIGSAFE PRIOR TO EXCAVATION.

P.L.S. \_\_\_\_\_  
 MATTHEW LOWRY, P.L.S. MASS. REGISTRATION NO. 49625

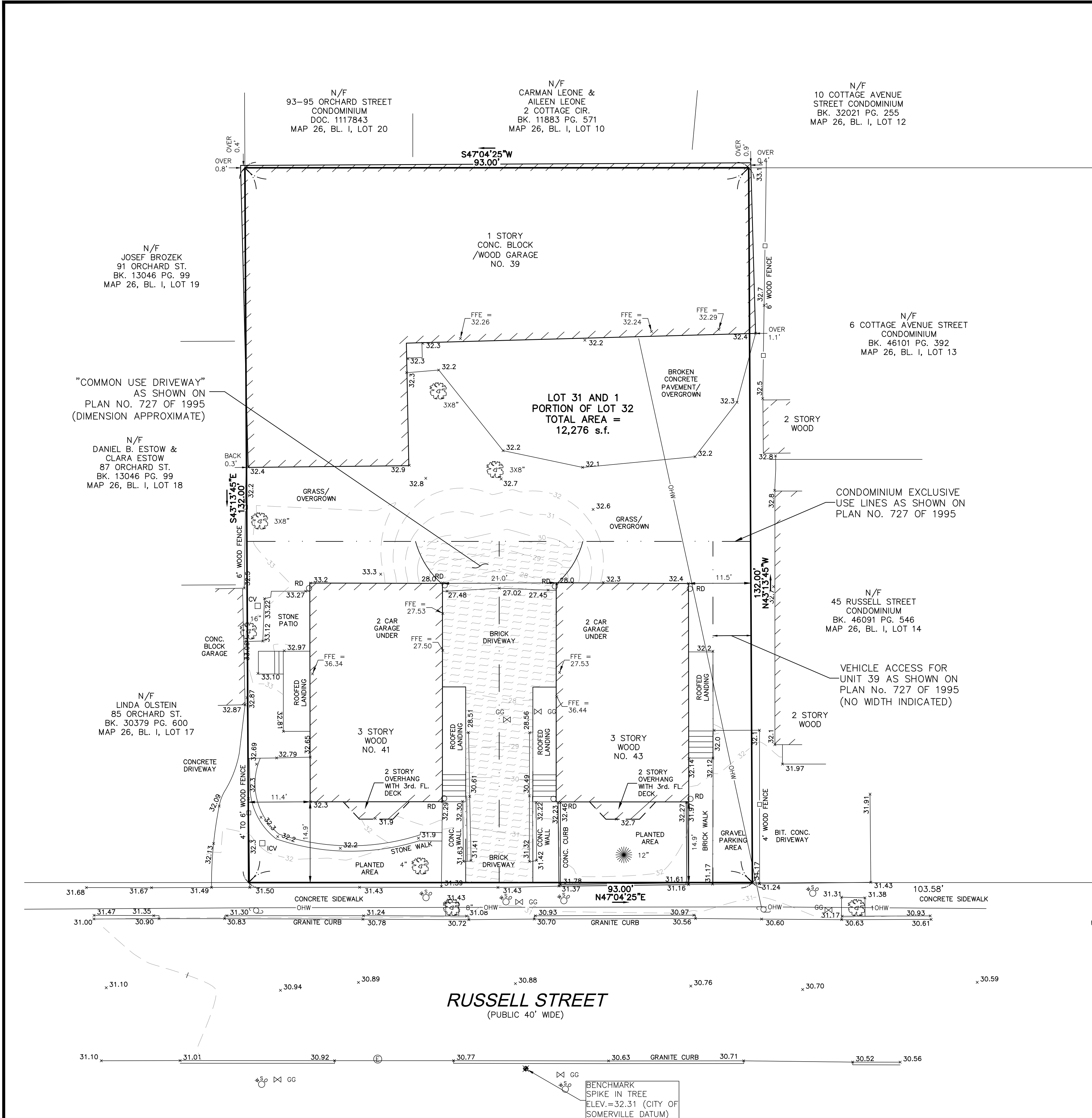
DATE \_\_\_\_\_

**LOCUS TITLE INFORMATION**

39-43 RUSSELL STREET  
 OWNER: PHILEMON R. RUSSELL CONDOMINIUM  
 DEED REFERENCE: BK. 25584 PG. 170  
 PLAN REFERENCE: PLAN No. 727 OF 1995  
 ASSESSORS: MAP 26, BLOCK I, LOT 15



**DRAFT**



Copyright 2016 Design Consultants, Inc.

P:\2016 Projects\2016-073 41 Russell St Somerville\Dwg\\_SURVEYING\16-073ec.dwg

**Design Consultants, Inc.**  
 CIVIL ENGINEERS and LAND SURVEYORS

120 MIDDLESEX AVENUE  
 SOMERVILLE, MA 02145  
 617-776-3350

68 PLEASANT STREET  
 NEWBURYPORT, MA 01950  
 978-358-7173

SCALE:			
HORIZ: 1" = 10'			
VERT: _____			
NO.	DATE	BY	REVISIONS

FIELD:	LG
CALCS:	ML
CHECKED:	BD
APPROVED:	ML

**EXISTING CONDITIONS PLAN**

**PHILEMON R RUSSELL CONDOMINIUM**  
**39-43 RUSSELL STREET**

**PLAN OF LAND IN**  
**SOMERVILLE, MASSACHUSETTS**

**SURVEYED FOR**  
**DELAPORTE DEVELOPMENT, INC.**

PROJECT NO.  
2016-073

DATE: JULY, 13, 2016

SHEET NO.  
1 OF 1