



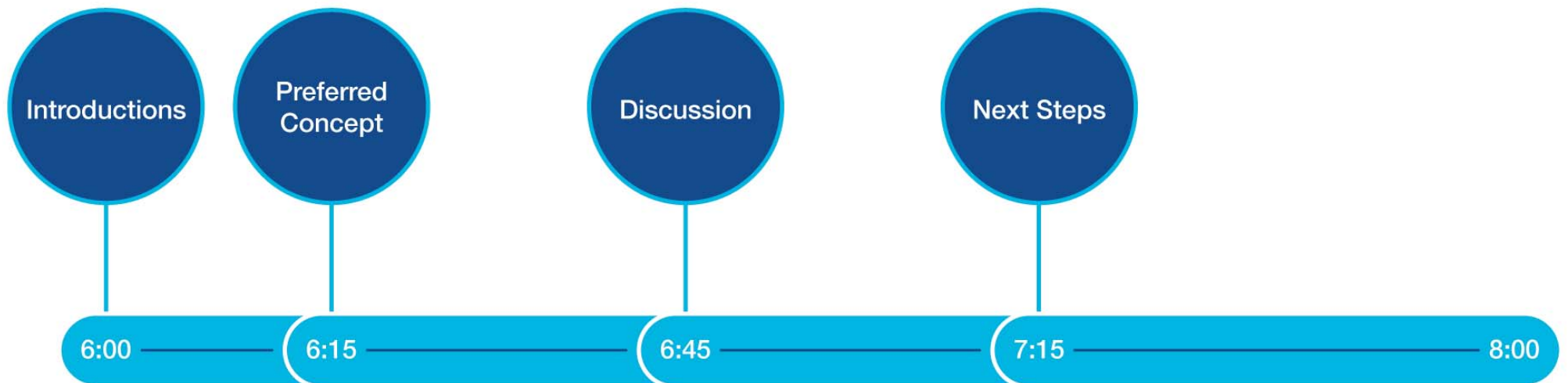
| SMMA

T'OOLE
DESIGN

BCA

Central Hill Campus – Community Meeting #3

Tonight's Agenda



Campus Plan Committee

- **Kristen Stelljes**, Somerville Community Preservation Act Manager
- **Bryan Bishop**, Director of Veterans
- **Cathy Piantigini**, Interim Director, Library
- **Robert King**, Director of Capital Projects and Planning
- **Emily Monea**, Director, SomerStat
- **George Proakis**, Director, Planning and Zoning
- **Brad Rawson**, Director, Transportation and Infrastructure
- **Mike Tremblay**, Senior Transportation Planner
- **Oliver Sellers-Garcia**, Director, Office of Sustainability and Environment
- **Melissa Woods**, Senior Long Range Planner

Planning Team

SMMA

- Alex Pitkin, Senior Vice President
- Lorraine Finnegan, Principal
- Samantha Farrell, Landscape Architect
- Elizabeth Galloway, Sustainable Designer
- Laura Monies, Landscape Architect/Planner
- Erin Prestileo, Civil Engineer
- Ali Ucci, Graphic Designer
- Jack Dombrowski, Graphic Designer
- Marisa Fryer, Site Designer

Building Conservation Associates

- Lisa Howe, Director of BCA New England

Toole Design Group

- Ashley Haire, Project Engineer
- Stephanie Weyer, Landscape Designer

Project Timeline

- Community Meeting #1 May 31, 2018
- Parking Study Meetings 1-3 Summer, 2018
- Memorials Commission Meeting June 20, 2018
- Community Meeting #2 Sept 25, 2018
- Parking Study Meeting #4 Sept 27, 2018
- Community Meeting #3 Nov 1, 2018
- Parking Study Meeting #5 Dec 12, 2018
- Campus Planning Study Complete Dec 28, 2018

Preferred Campus Plan

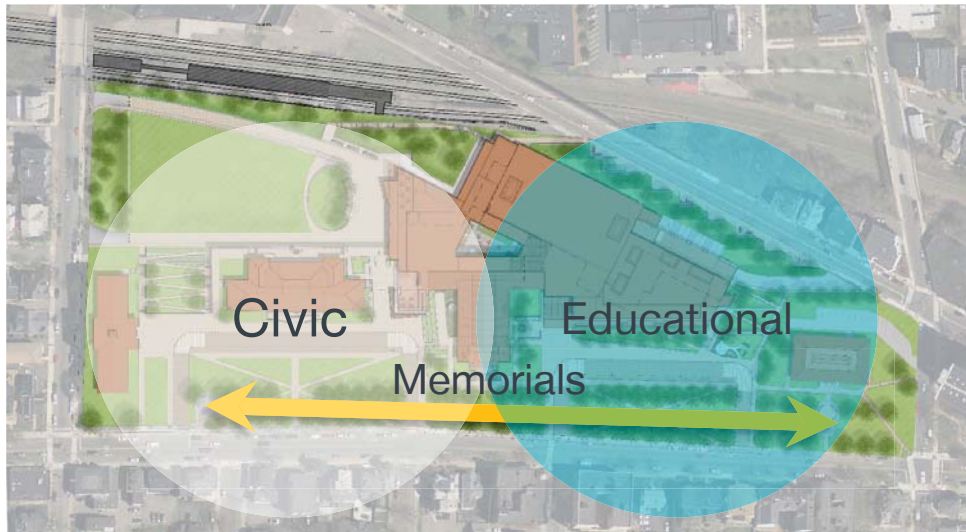
Planning Overview

Summary of Community Feedback

Preferred Plan

Overview of Planning Process: How We Got Here

- Existing Conditions and Design Parameters
- Stakeholder Meetings
- Community Feedback – Desired Program



Planning Design Parameters

- Somerville High School Master Plan and project scope as a starting point
- GLX Gilman Station and Community Path
- Parking and Traffic Studies
- Building Use Space Plans for City Hall and 1895 Building
- Re-creation of Central Hill playground
- Respectful and chronological incorporation of war memorials

Overview of Planning Process: How We Got Here

- Concept Development
- Stakeholder Meetings
- Gather and Incorporate Community Feedback



Summary of Community Feedback

Top Themes:

- Keep Existing Trees
- More Parking
- Respectful Placement of War Memorials

Other Emerging Themes:

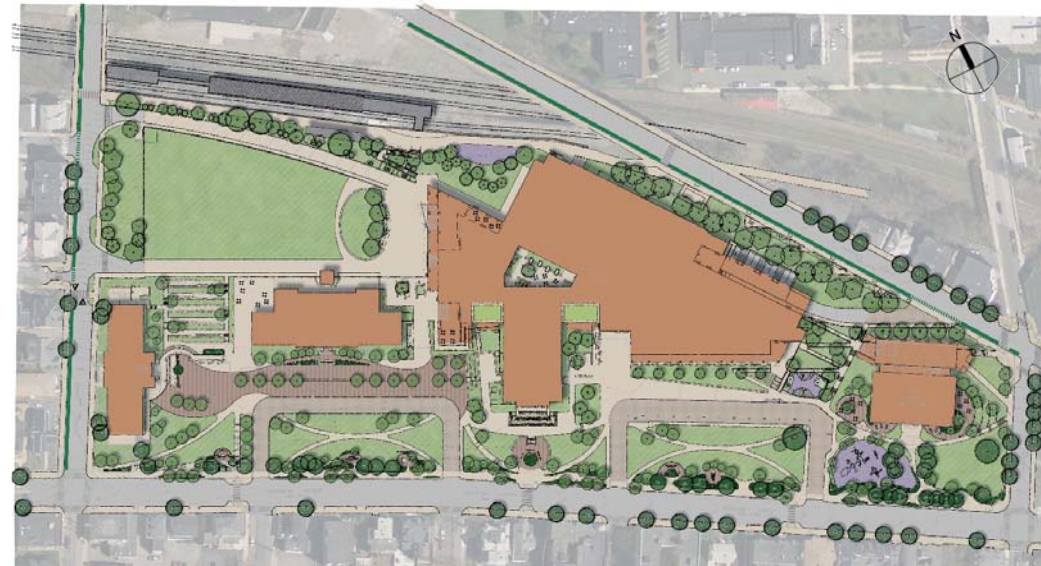
- Safe street crossings
- Accessibility
- Bicycle Safety
- More Green Space

Preferred Campus Plan

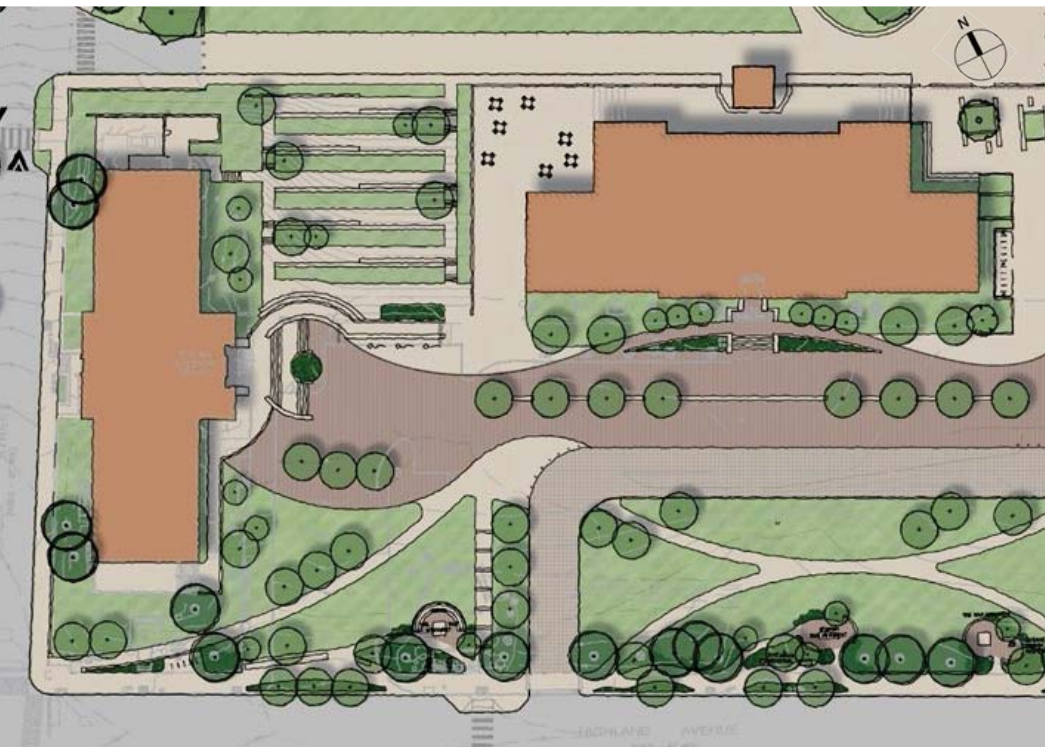


Preferred Plan: Central Hill Concourse Highlights

- Memorials integrated into Highland streetscape
- Honor Roll becomes a landmark / gateway emphasizing the War Memorial Building
- Vehicular access realigns with Prescott
- Public Access Drop-off integrated with dedicated pedestrian plaza giving visual prominence to City Hall and 1895
- Maintains majority of existing trees along Highland and strategically replaces trees to emphasize visual corridors and renew streetscape plantings
- Vegetated buffer along walkway to function as aesthetic separation for memorials and storm water management features
- More usable reorganized Green Space at Library



Plan Highlights

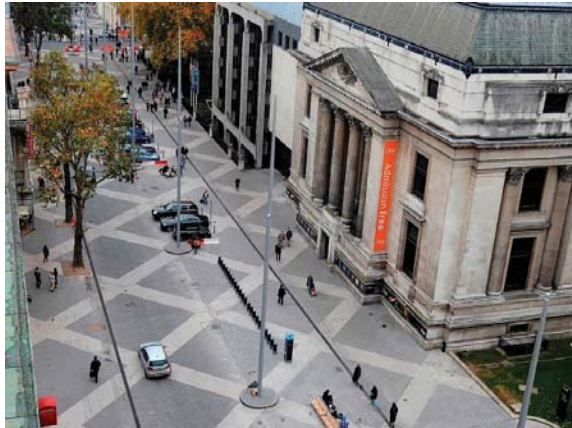


Accessibility to City Hall and
1895 and across campus

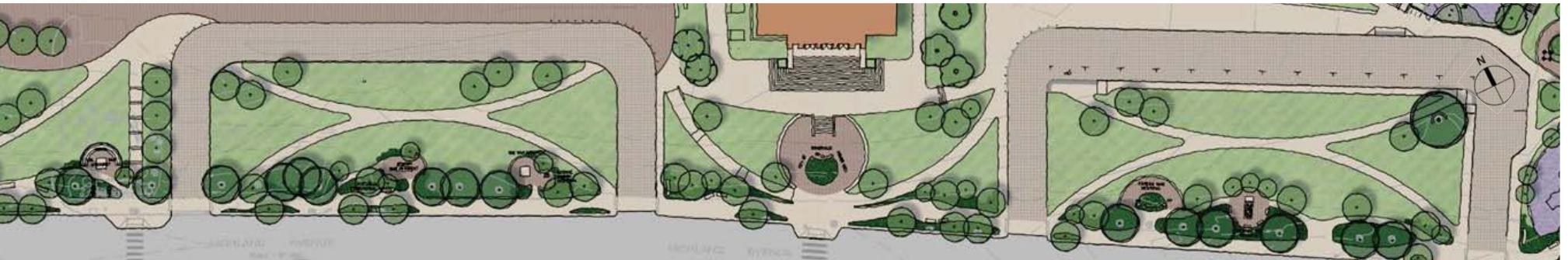


Plan Highlights

Presence of City Hall,
dedicated pedestrian plaza



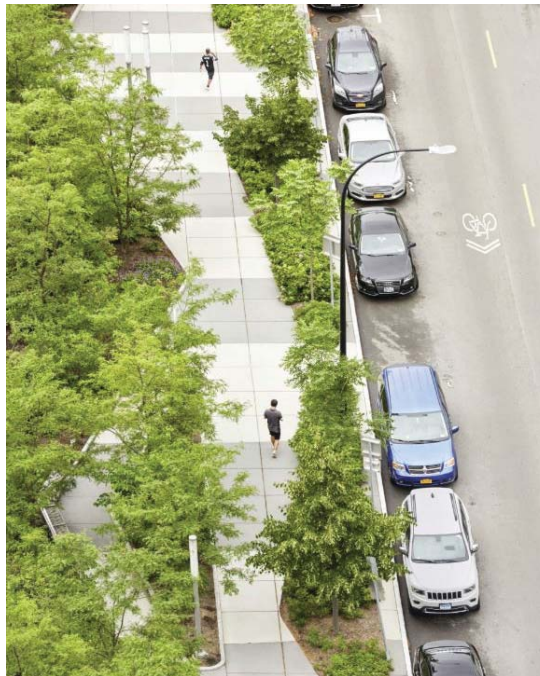
Plan Highlights



Centralized / chronological placement of memorials



Plan Highlights



Plan Highlights



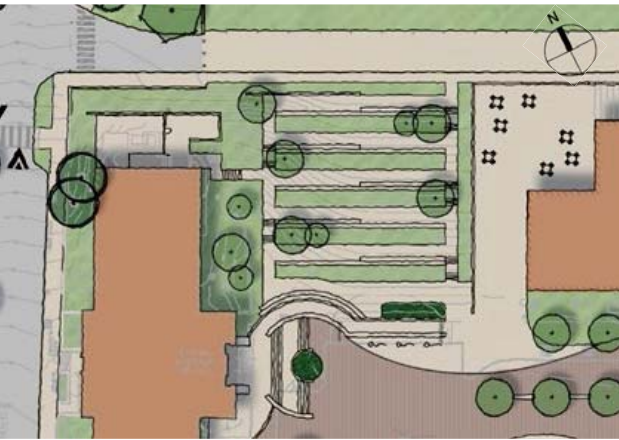
Library: usable green space, terraced edge, adjacent play space



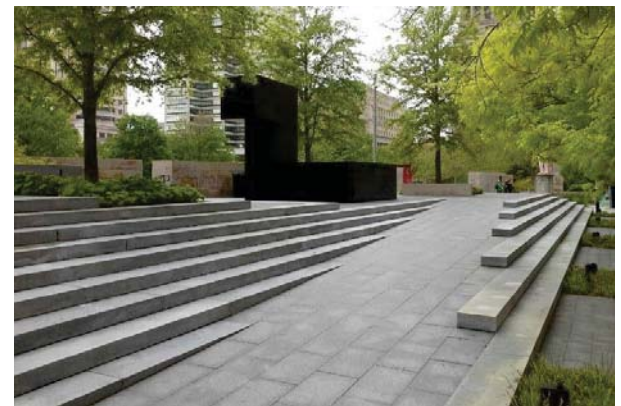
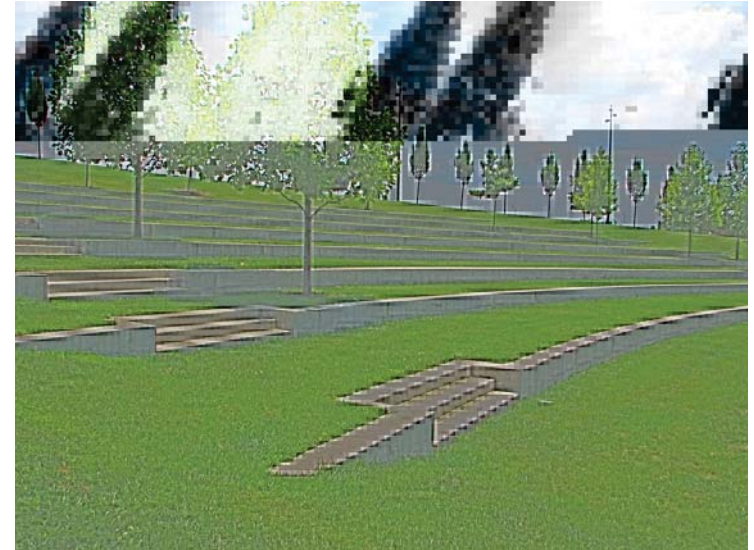
Plan Highlights



Plan Highlights



Accessible route to Gilman Station
and on the hill west of 1895



Plan Highlights

Activate adjacent space at community path



Transportation

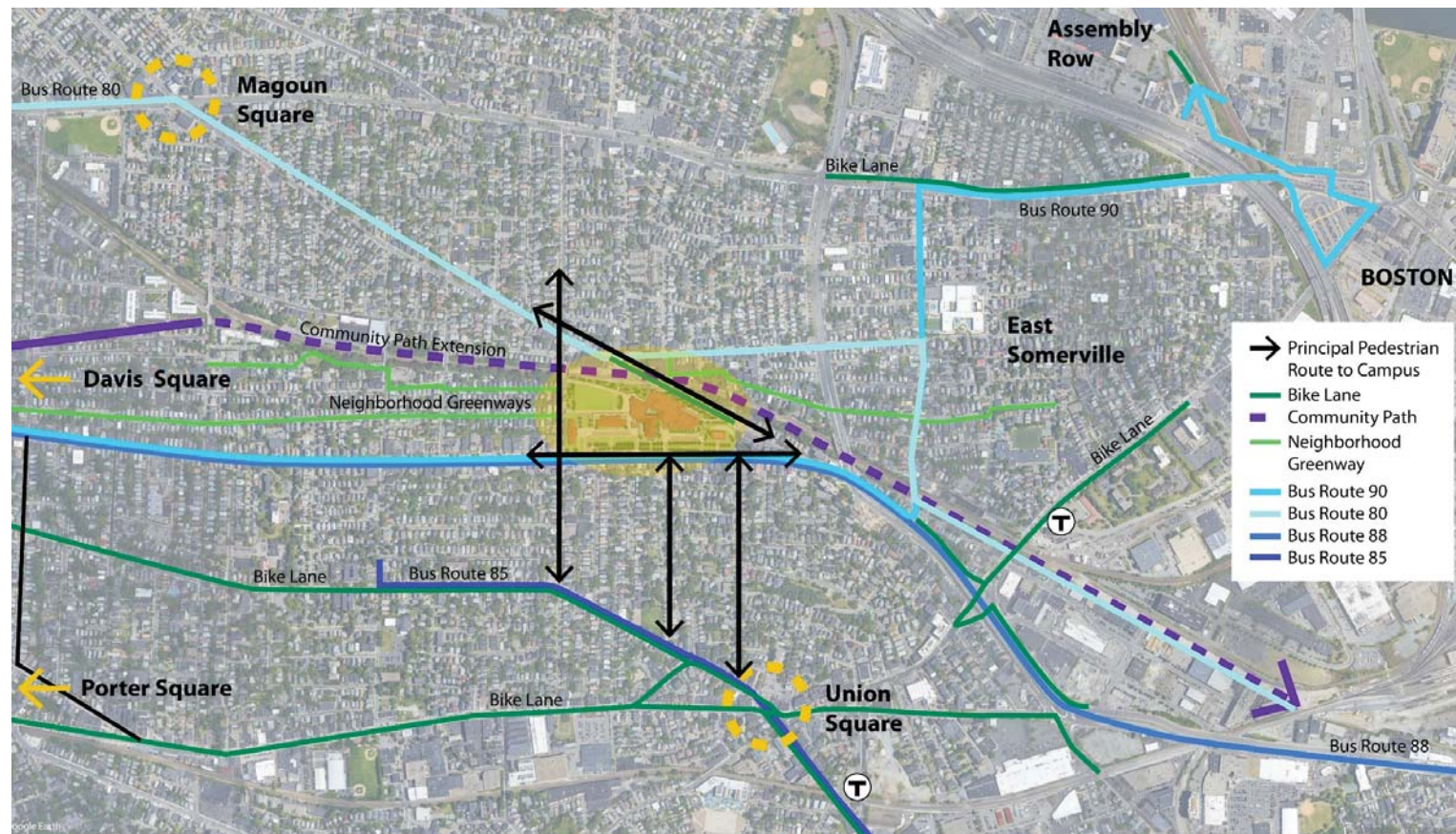
Transportation

Modes

- Vehicular Access
- Transit
- Biking
- Pedestrian Access

Topics

- Site access
- Traffic calming
- Grade challenges
- Community path
- Future street traffic patterns
- MBTA bus stops



From the Wikimap: Community Member Identified Areas of Concern

Respondents from Teele Square, Porter Square, Spring Hill, Winter Hill, Union Square, Hillside, East Somerville

Most frequent responses identified:

- Locations for crosswalks
- Dangerous/uncomfortable intersections and ideas for improvement



Vehicular Access

City conducting a parking analysis and has a meeting scheduled to discuss parking

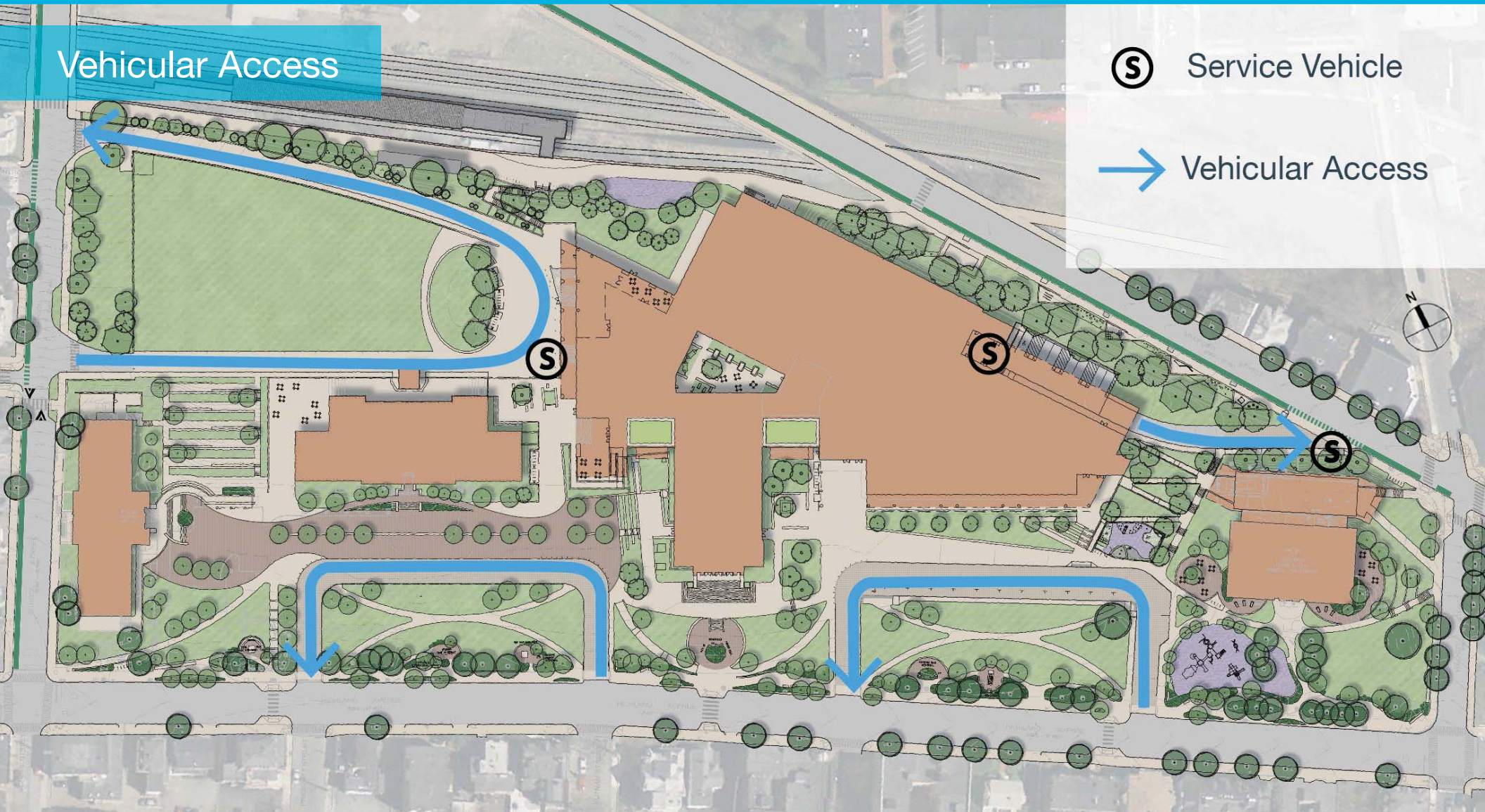
Recommend School Street to change from one-way to two-way from Medford St to Somerville Ave



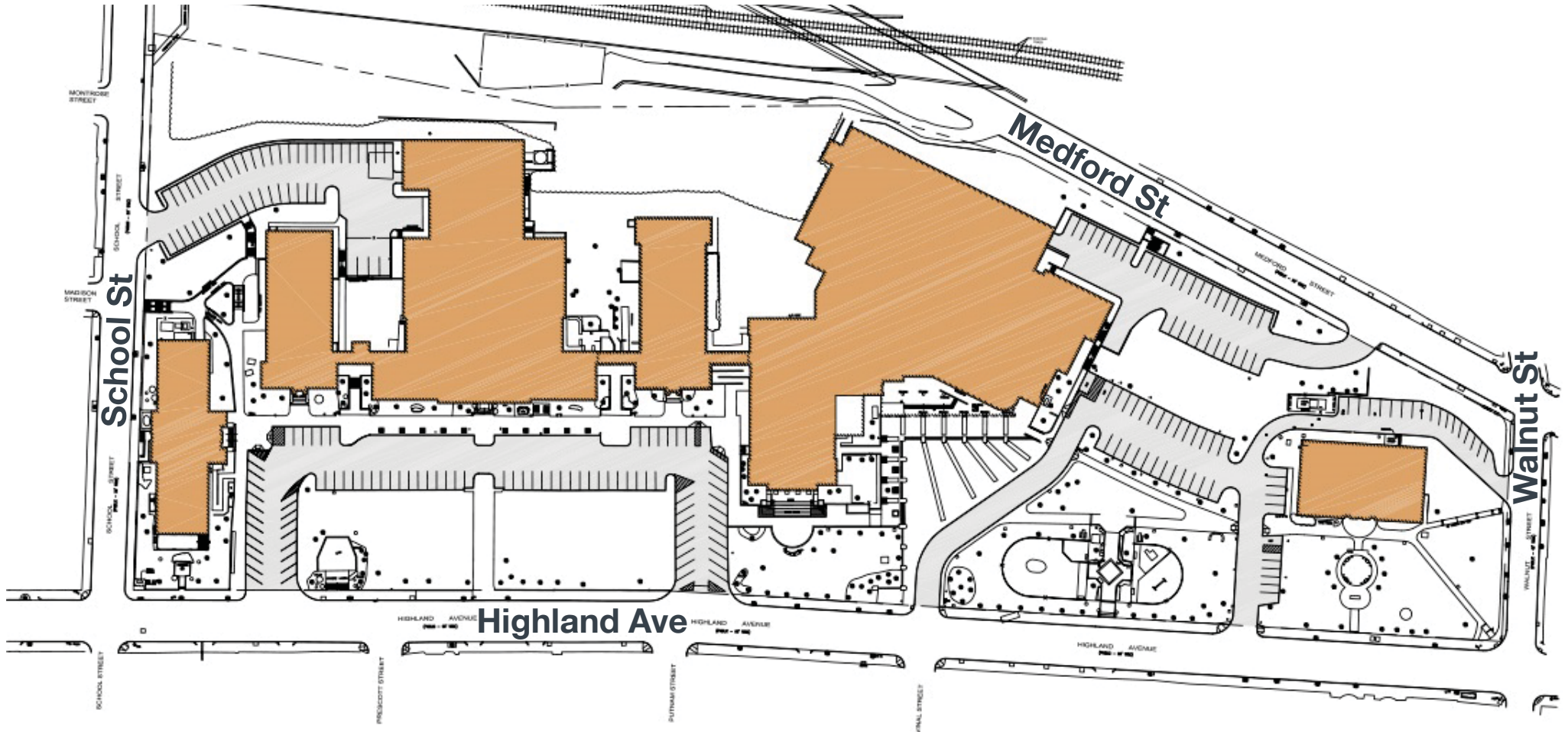
Vehicular Access

Ⓢ Service Vehicle

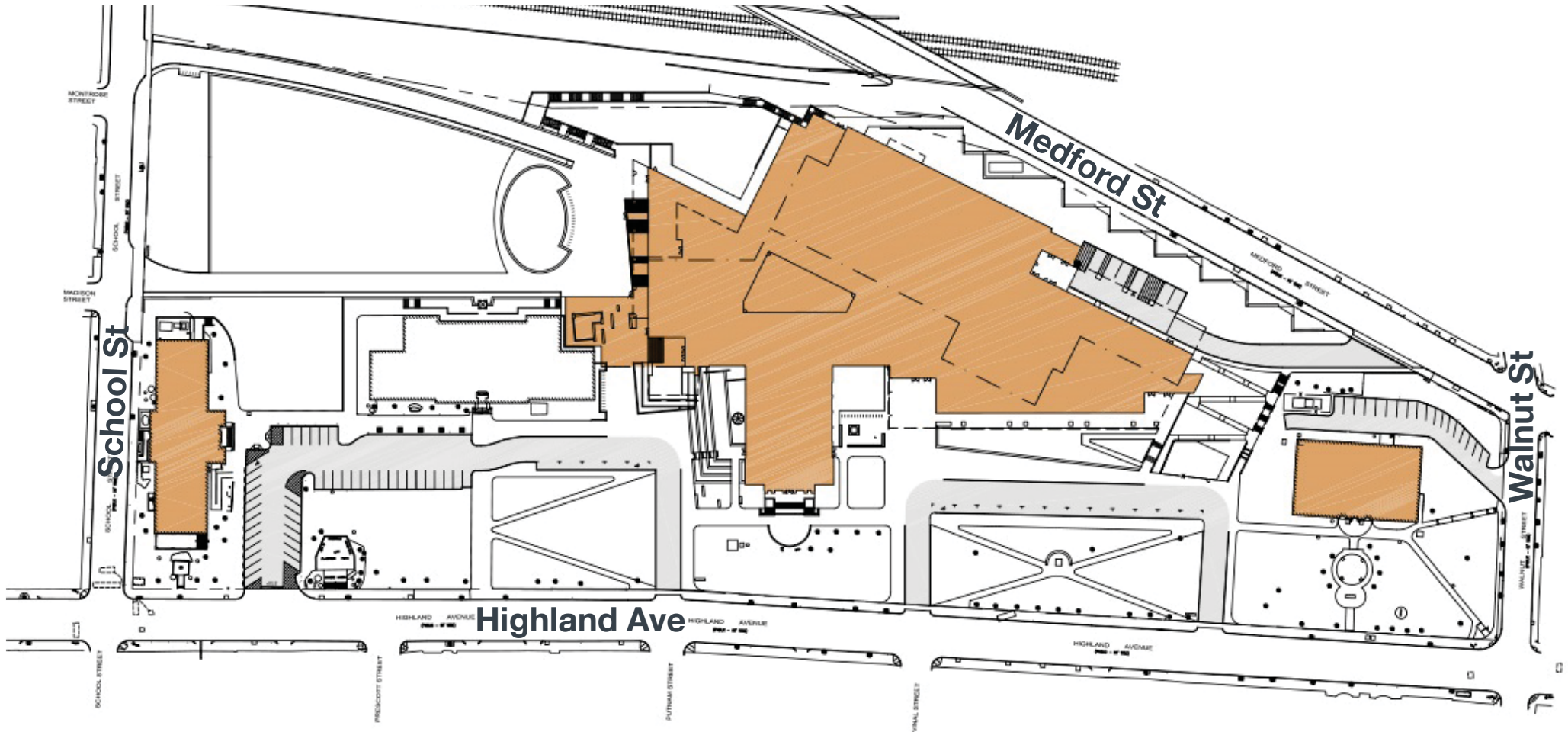
→ Vehicular Access



High School Pre-Construction Parking – 245 Spaces



High School Proposed Parking – 85 Spaces



Parking Impact Meeting

December 12, 2018 – 6:00 pm

Central Library Auditorium

Feedback

Link to Neighbor Survey:

<https://www.surveymonkey.com/r/CentralHillParkingSurveyResidents>

Transit

Green Line Extension (GLX)



Gilman Square Station Ground Breaking

- **Pedestrian crossing to be constructed at Gilman Square**
- **Recommend Transportation & Infrastructure Division work with MBTA on bus routes 80 and 85**



Transit

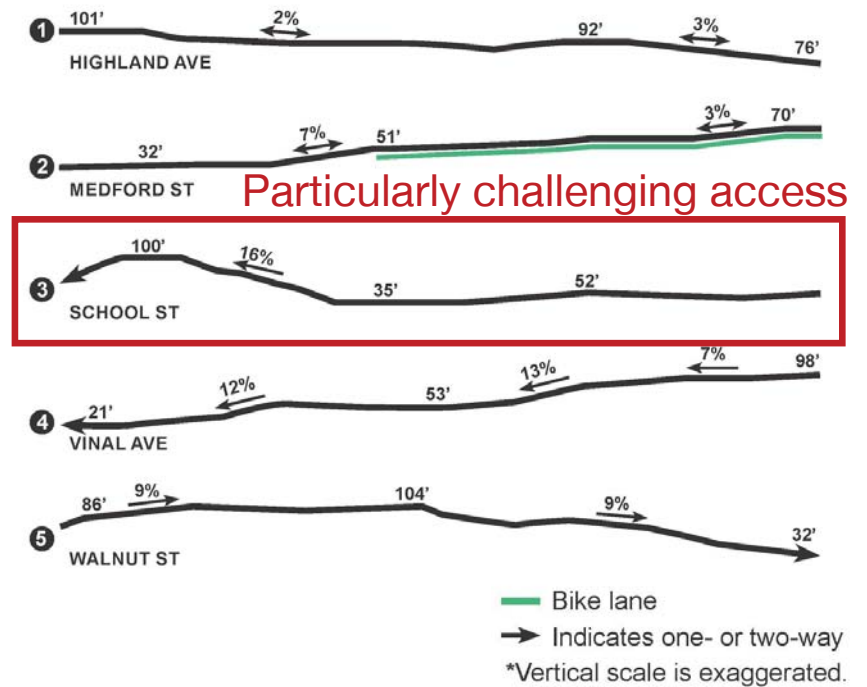
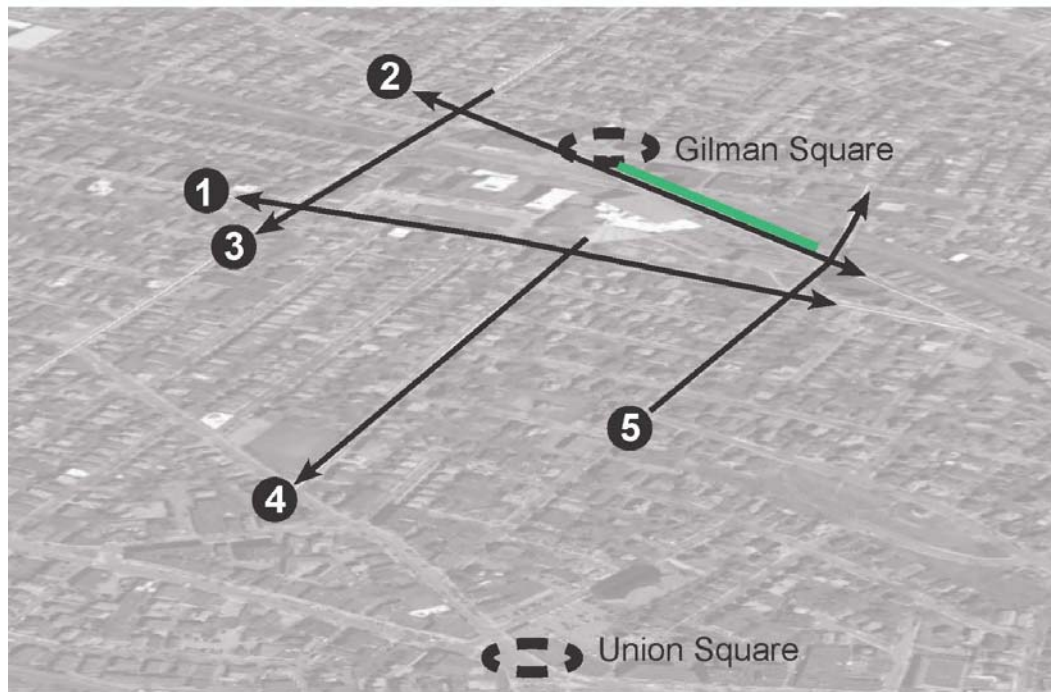
Bus Stops



Looking at potential changes to bus stops to reduce intersection crossing for pedestrians and provide operational improvements

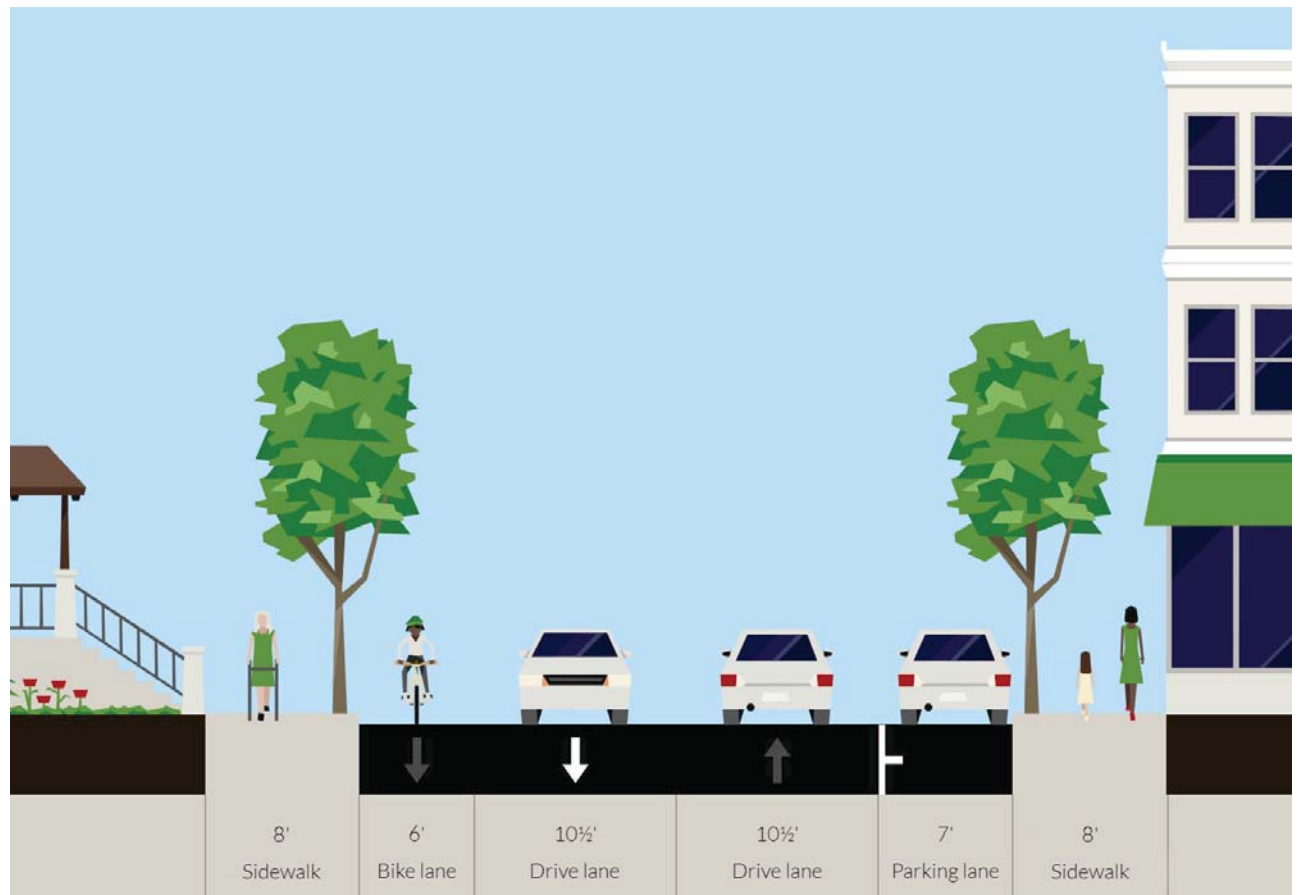
Biking

Significant Grade Challenge



Biking

School St Proposed Bike Lane



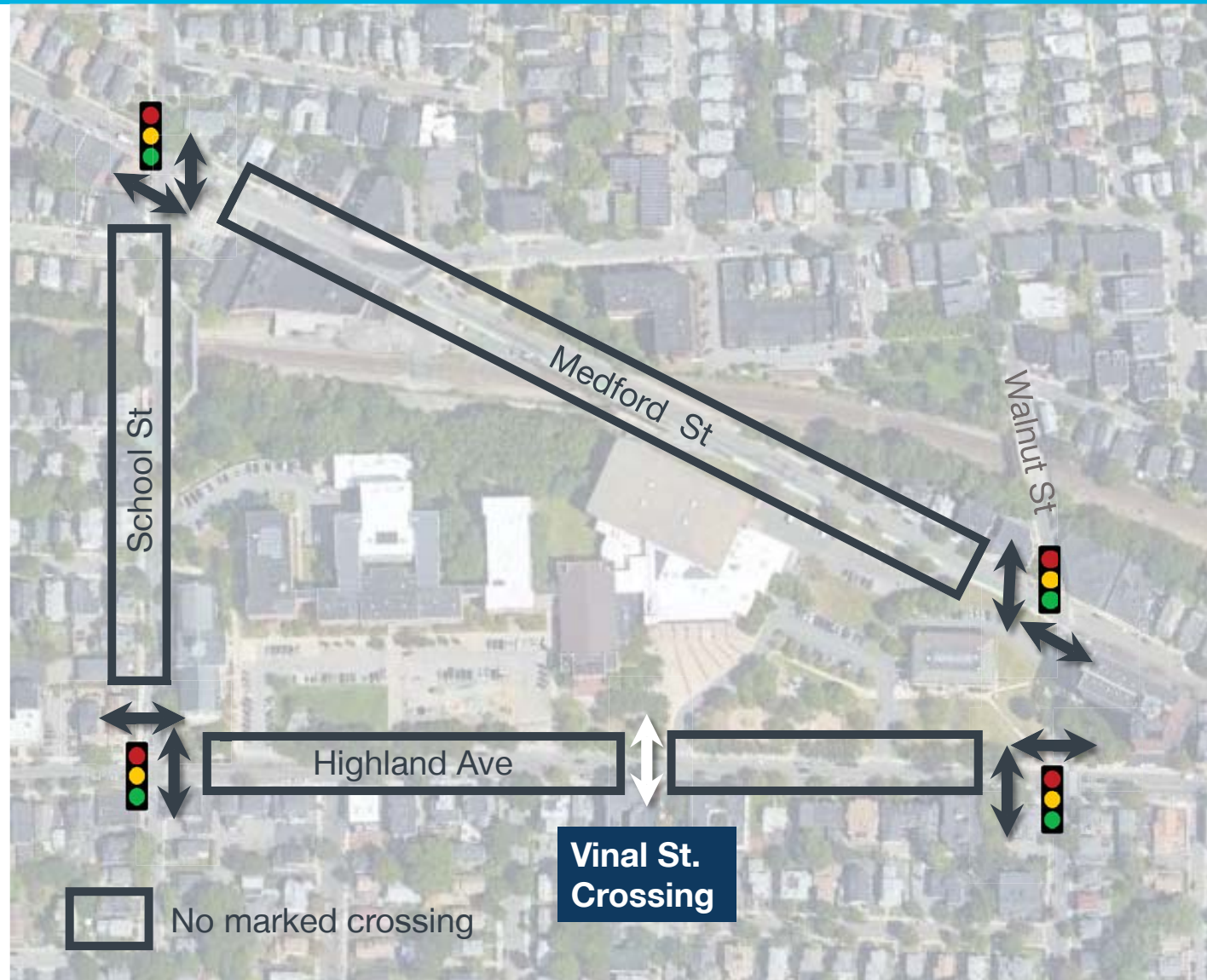
Bicycle Access and Parking Locations



Pedestrian Access - Existing Conditions

Considerations

- Where people are coming from and their destinations
- Existing and needed safe crossings
- Signalization



Pedestrian Access



Proposed New Crossing



Suggested Crossing Improvements



Pedestrian Access

Proposed Madison & School Street Crossing



Raised Crosswalk

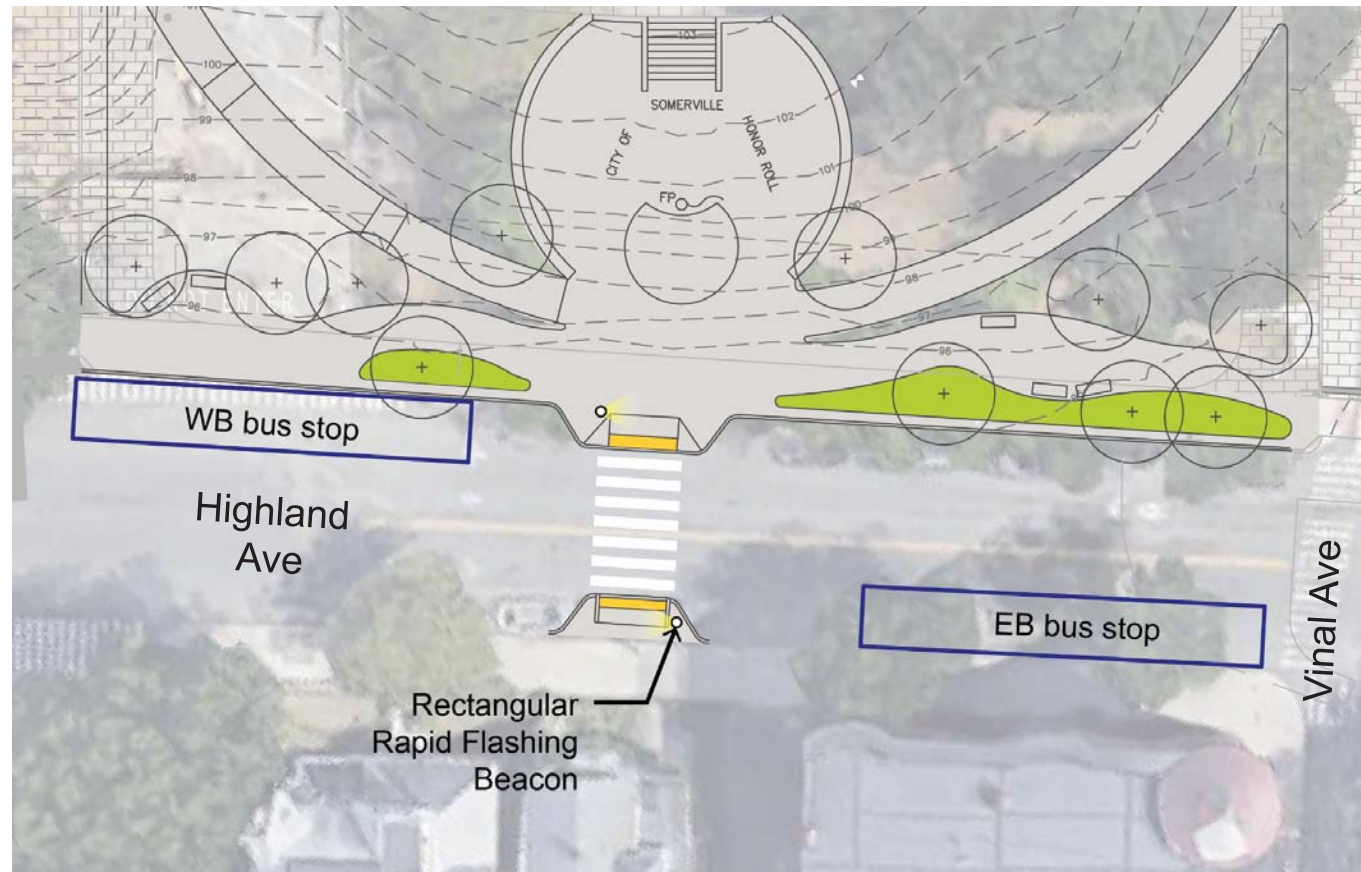


Pedestrian Access

War Memorial Proposed Crossing



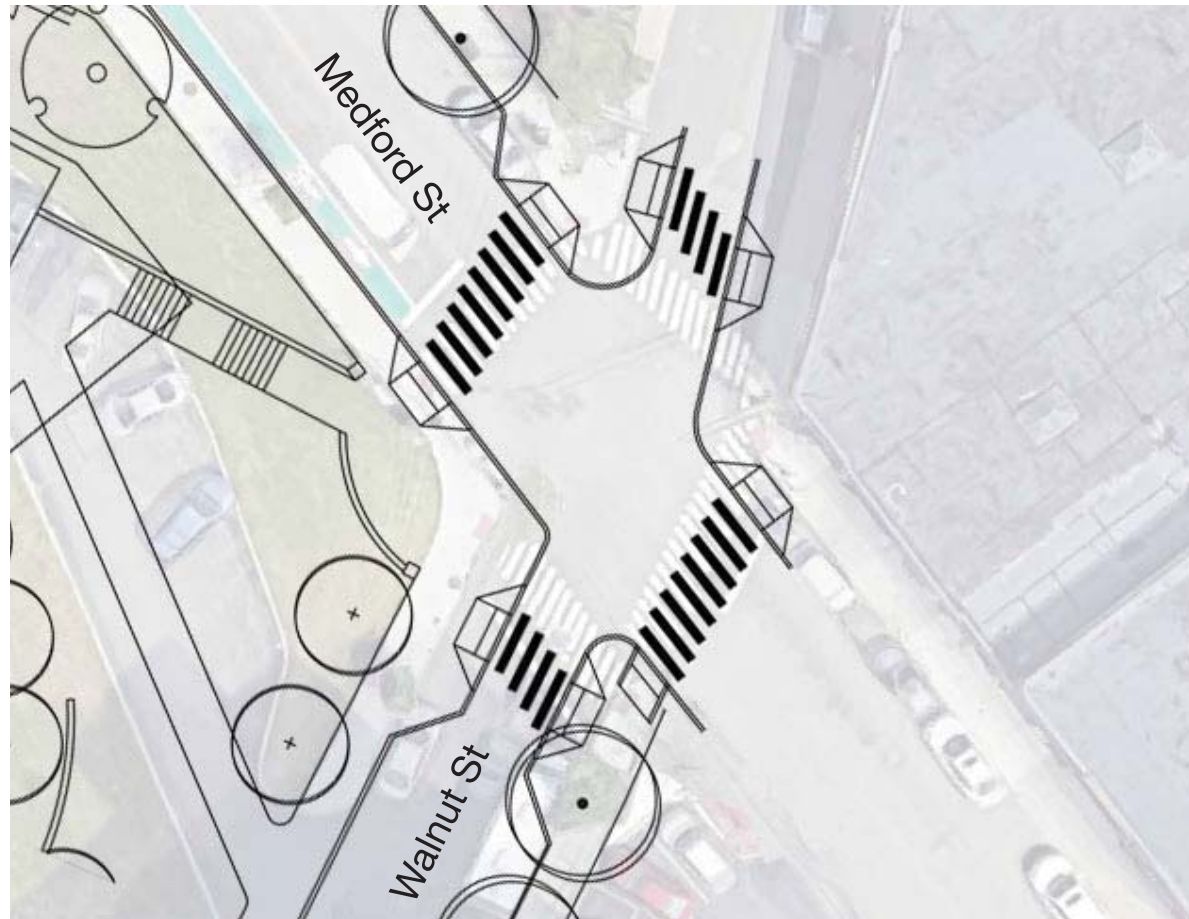
Rectangular Rapid Flashing Beacon



Pedestrian Access

Intersection Improvement: Medford St & Walnut Street

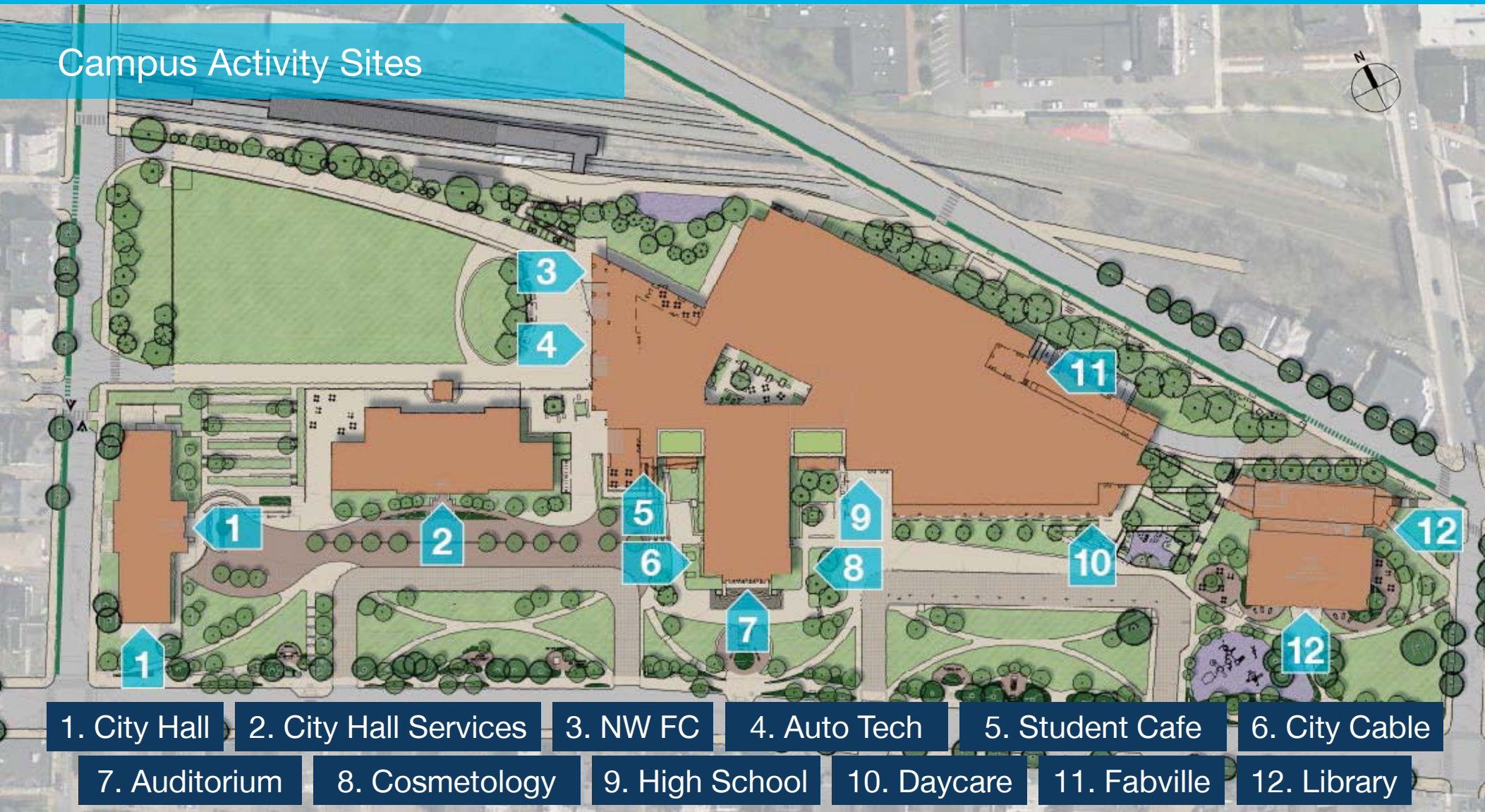
- Extend curb to shorten crossing time for pedestrians and widen sidewalk
- Provide directional crossings rather than existing apex
- Improve crossing signals



Proposed Campus Gateways



Campus Activity Sites



Accessible Routes

● Access Point

--- Accessible Route



Wayfinding and Signage

Unifying Concepts

Signage Types & Levels

Location of Signage

Aligning with Current High School Design

Signage and Wayfinding

Unify the campus, creating sense of place



Design and materials take cues from site environment and complement.

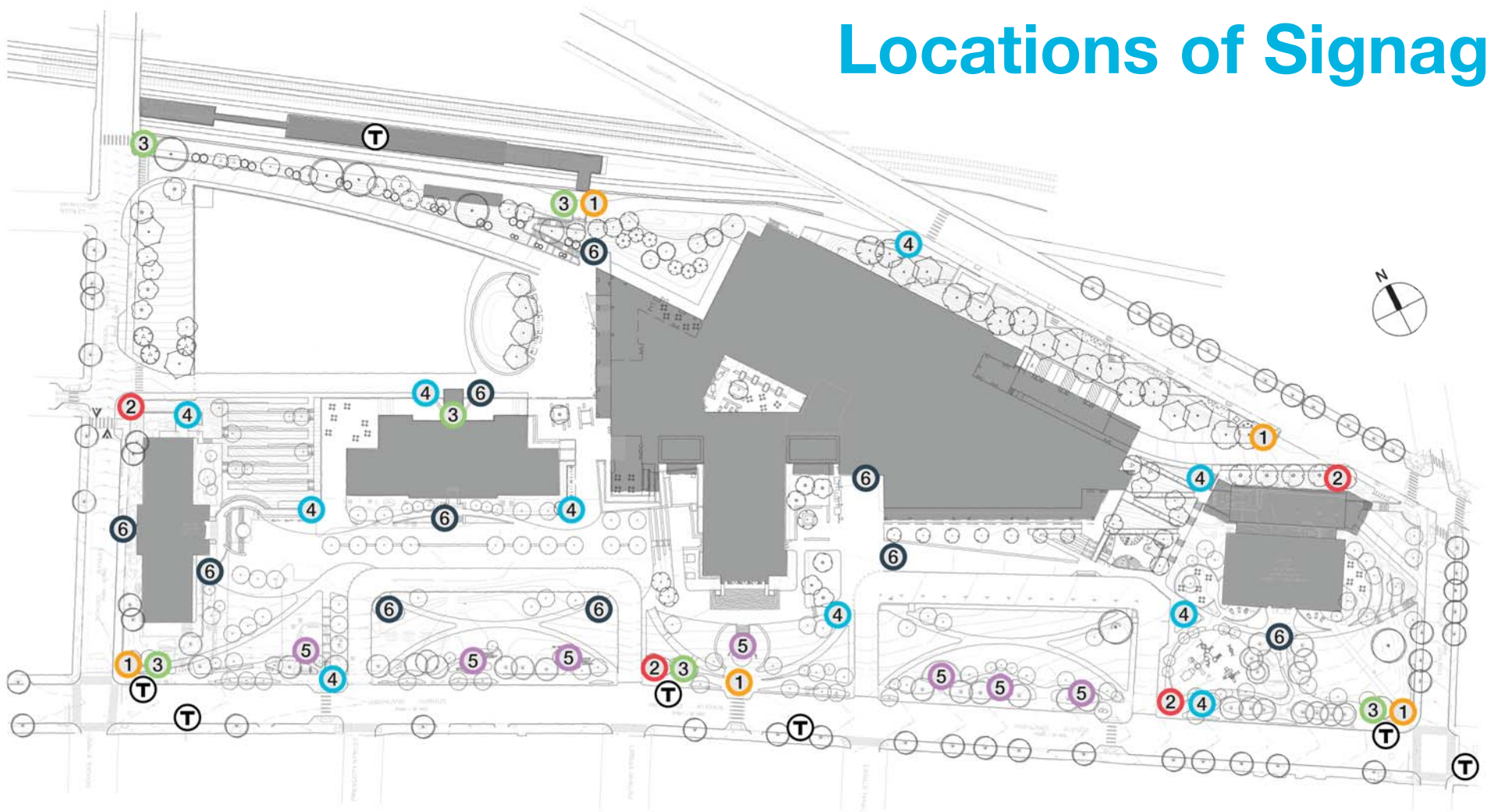
Graphics inform visitors of the campus.



Signage Levels

		Audience	Sign Type
	Level 1	Everyone	Gateway or Campus Markers
	Level 2	Vehicles	Roadside Pylons
	Level 3	Unfamiliar Pedestrians	Map & Directory
	Level 4	Regular Pedestrians	Individual Destination Marker
	Level 5	Monument Patrons	Informational Placard
	Level 6	Everyone	Building Marker

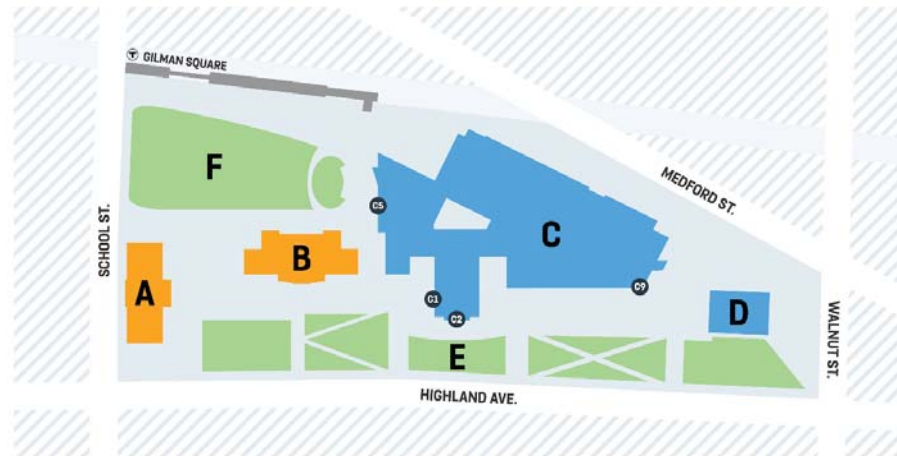
Locations of Signage



Campus Directory

Providing directions at multiple levels from the civic and educational commons, to individual city & school departments and their respective entrances.

Welcome to Somerville's Central Hill Campus



Civic Buildings

A - City Hall

Office of the Mayor
Communications
Elections
Personnel Payroll
Purchasing

Grants
City Clerk
Assessing
Treasury
Auditing

B - City Hall Annex

Health & Human Services
Information Technology
SCALE
Personnel

OSPCD
Housing
School Department - Central

Learning Buildings

C - Somerville High School

C1. City Cable
C2. Community Entrance
C3. Auditorium
C4. Cosmetology Dept.
C5. Next Wave Full Circle

C6. Cambridge Health Alliance
C7. Somerville Childcare
C8. Fabrication Lab
C9. Highlander Cafe
C10. Automation Dept.

D - Central Library

Park Areas

E - Monument Walk

World War I Monument
World War II Monument
Vietnam War
Monument 2
Monument 5

F - Recreational Field

Sustainability

Approach to Carbon Neutral

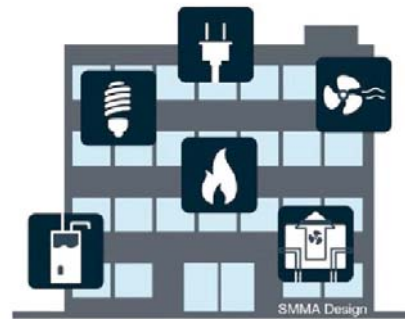


1. Renewable Energy Resources

Approach to Carbon Neutral

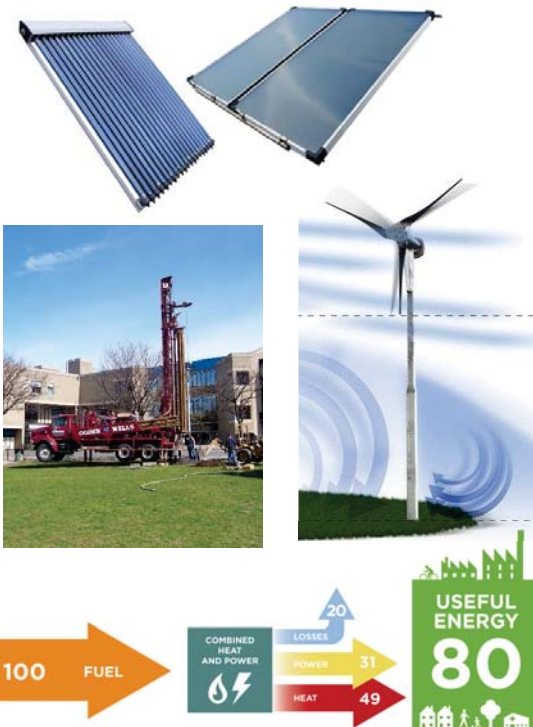


1. Renewable Energy Resources

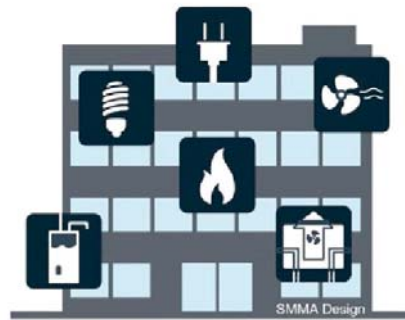


2. Low Energy Use Campus

Approach to Carbon Neutral



1. Renewable Energy Resources








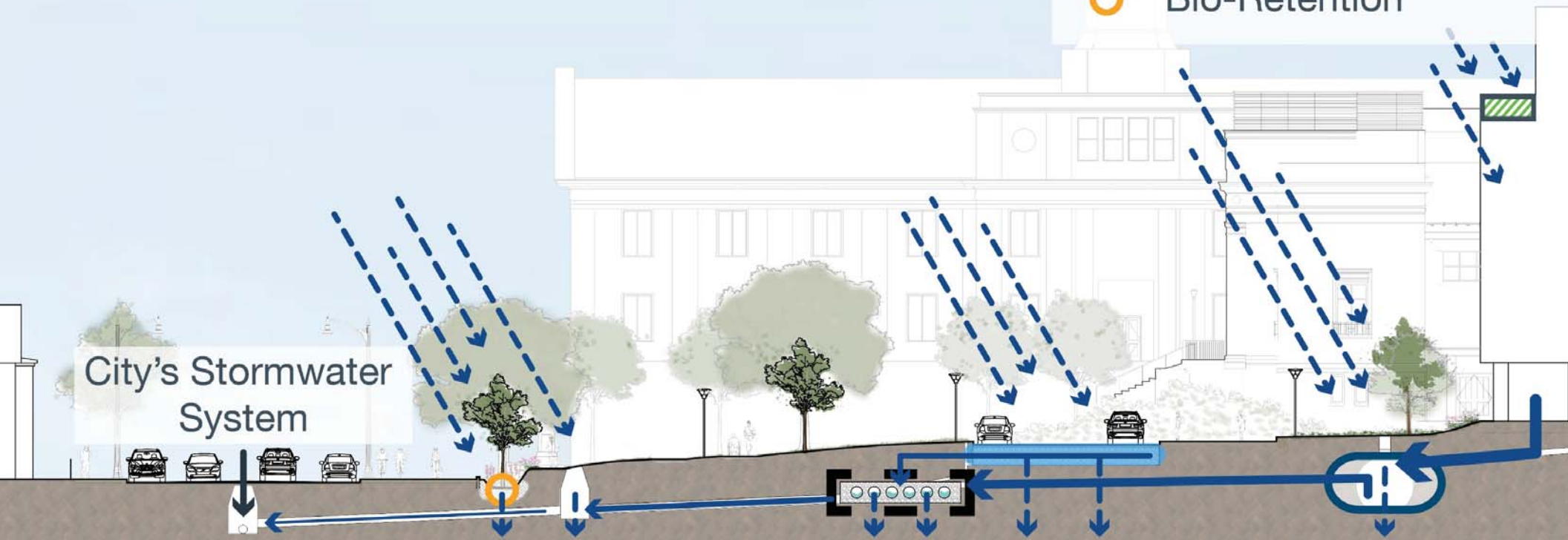
2. Low Energy Use Campus



3. Time

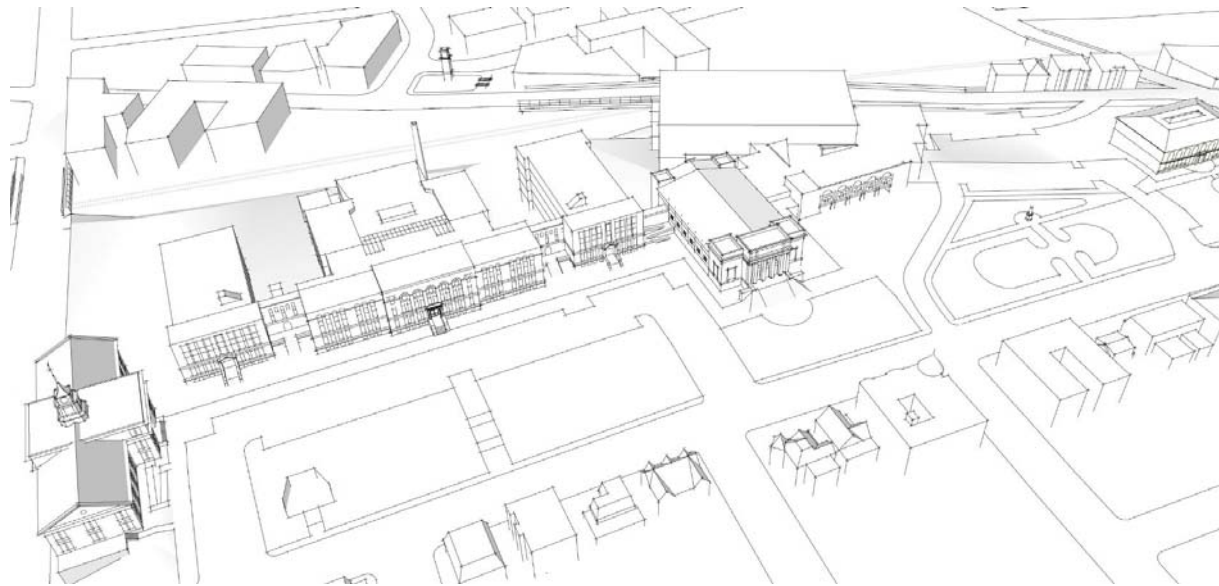
Other Sustainability Objectives

-  Green Roof
-  Porous Pavement
-  Infiltration System
-  Rainwater Harvesting
-  Bio-Retention



Preliminary Conclusions

- No fossil fuel based combustion
- Building scale systems
- Combination of on-site and purchased renewable power
- All electric systems for renovated/new buildings
- Policies to support low energy consumption



Campus Plan Project Phasing

Campus Plan Project Phasing

Note:

Estimated design time for Buildings, 1 Year.

Estimated design time of Site, 6 Months

Work that can run concurrent to other projects

CHCP Phase 3 Work
Commencing 2023

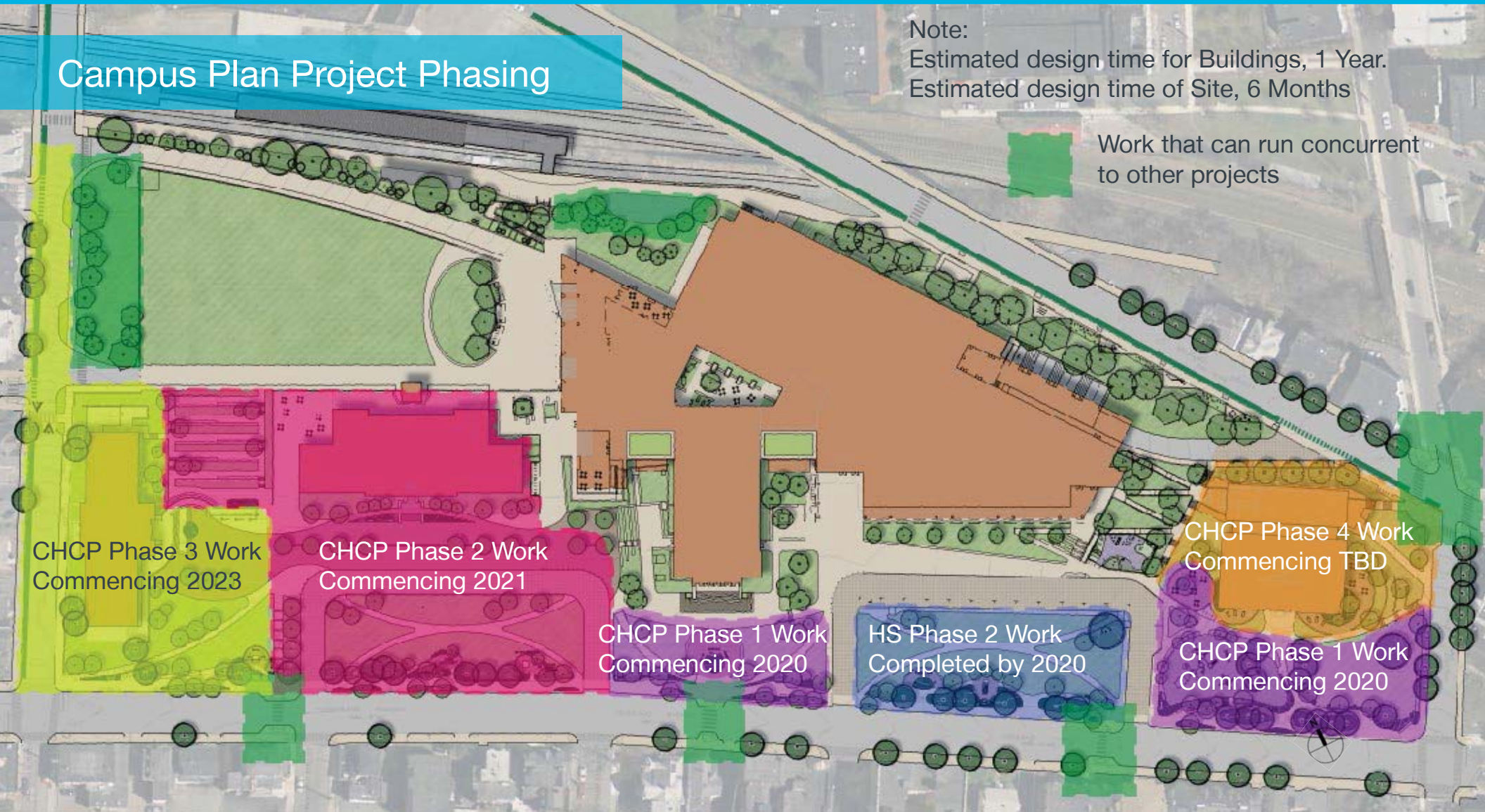
CHCP Phase 2 Work
Commencing 2021

CHCP Phase 1 Work
Commencing 2020

HS Phase 2 Work
Completed by 2020

CHCP Phase 4 Work
Commencing TBD

CHCP Phase 1 Work
Commencing 2020



Discussion

Feedback

To offer feedback or thoughts please contact:
centralhill@somervillema.gov

Project Timeline

- Community Meeting #1 May 31, 2018
- Parking Study Meetings 1-3 Summer, 2018
- Memorials Commission Meeting June 20, 2018
- Community Meeting #2 Sept 25, 2018
- Parking Study Meeting #4 Sept 27, 2018
- Community Meeting #3 Nov 1, 2018
- Parking Study Meeting #5 Dec 12, 2018
- Campus Planning Study Complete Dec 28, 2018

Parking Impact Meeting

December 12, 2018 – 6:00 pm

Central Library Auditorium

Feedback

Link to Neighbor Survey:

<https://www.surveymonkey.com/r/CentralHillParkingSurveyResidents>

Next Steps

- Document feedback from tonight's session
- Review with Campus Plan Committee
- Committee to refine preferred Option
- Design team to develop potential costs for implementation (will be phased over several years)
- Complete study by end of year
- Commence design in 2019

Thank you

For more information:

www.somervillma.gov/highschool/

www.somervillema.gov/centralhillplan/

Somerville High School Construction Camera:

<https://app.oxblue.com/open/Suffolk/somervillehighschool>