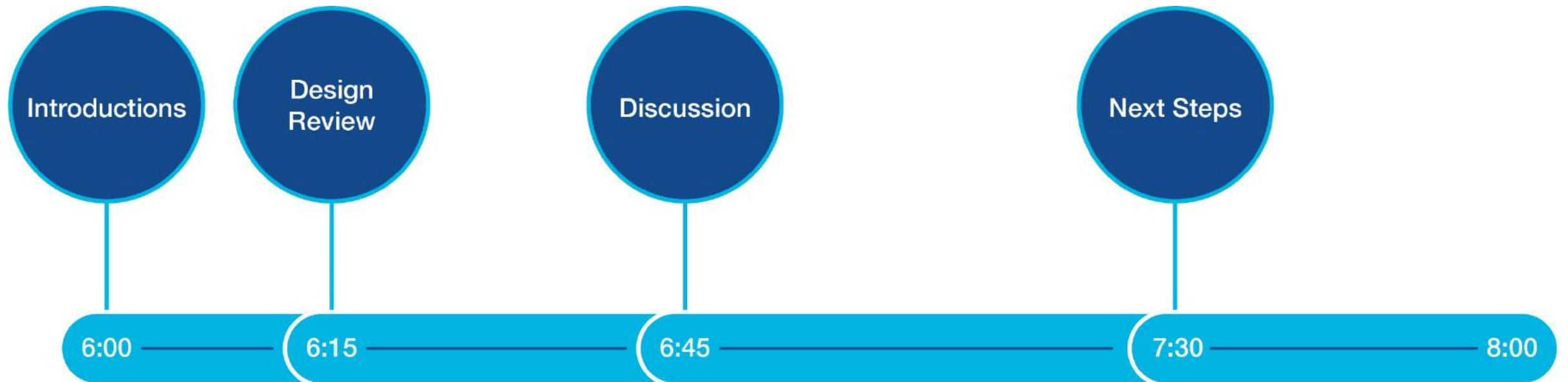




Central Hill Phase 1 Design – Community Meeting #1

Tonight's Agenda



City of Somerville

- Cortney Kirk, Streetscape and Public Space Planner
- Kristen Stelljes, Director, SomerStat
- Bryan Bishop, Director, Veterans' Affairs
- Emily Monea, Chief of Staff, City of Somerville
- Brad Rawson, Director, Mobility
- Rich Raiche, Director, Infrastructure and Asset Management
- Cathy Piantigini, Director, Libraries
- Lilly Sundell-Thomas, Deputy Director, Libraries
- Jeff Curley, Chief of Staff, Somerville Public Schools

Project Team

SMMA

- Alex Pitkin, Senior Vice President
- Lorraine Finnegan, Principal
- Michael Fazio, Project Manager
- Laura Monies, Landscape Architect/Planner
- Erin Prestileo, Civil Engineer
- Ali Ucci, Graphic Designer
- Jack Dombrowski, Graphic Designer
- Peter Rebuck, Site Designer

Building Conservation Associates

- Lisa Howe, Director of BCA New England

Toole Design Group

- Stephanie Weyer, Landscape Designer

Project Timeline

- Campus Planning Study Complete Dec 28, 2018
- Phase 1 Design Begins May 24, 2019
- Community Meeting #1 July 22, 2019
- Community Meeting #2 TBD
- Phase 1 Design Documentation Complete Nov. / Dec. 2019
- Phase 1 Construction Begins Spring 2020
- Phase 1 Construction Complete Anticipate Fall 2021

Central Hill Campus Plan

Preferred Plan

Campus Plan Phasing

Preferred Campus Plan



Gilman Station and the
Community Path

Medford St

Somerville High
School

1895 Building

City Hall

Library

Highland Ave

Walnut St



Planning Design Parameters

- Somerville High School Master Plan and project scope as a starting point
- GLX Gilman Station and Community Path
- Parking and Traffic Studies
- Building Use Space Plans for City Hall and 1895 Building
- Re-creation of Central Hill playground
- Respectful and chronological incorporation of war memorials

Summary of Community Feedback

Top Themes:


- Maintain Existing Trees
- Maintain Parking
- Respectful Placement of War Memorials

Other Emerging Themes:

- Safer street crossings
- Accessibility
- Bicycle Safety
- Enhanced Green Space

Campus Plan Project Phasing

Note:
Estimated design time for Buildings, 1 Year.
Estimated design time of Site, 6 Months

 Work that can run concurrent to other projects

CHCP Phase 3 Work
Commencing TBD

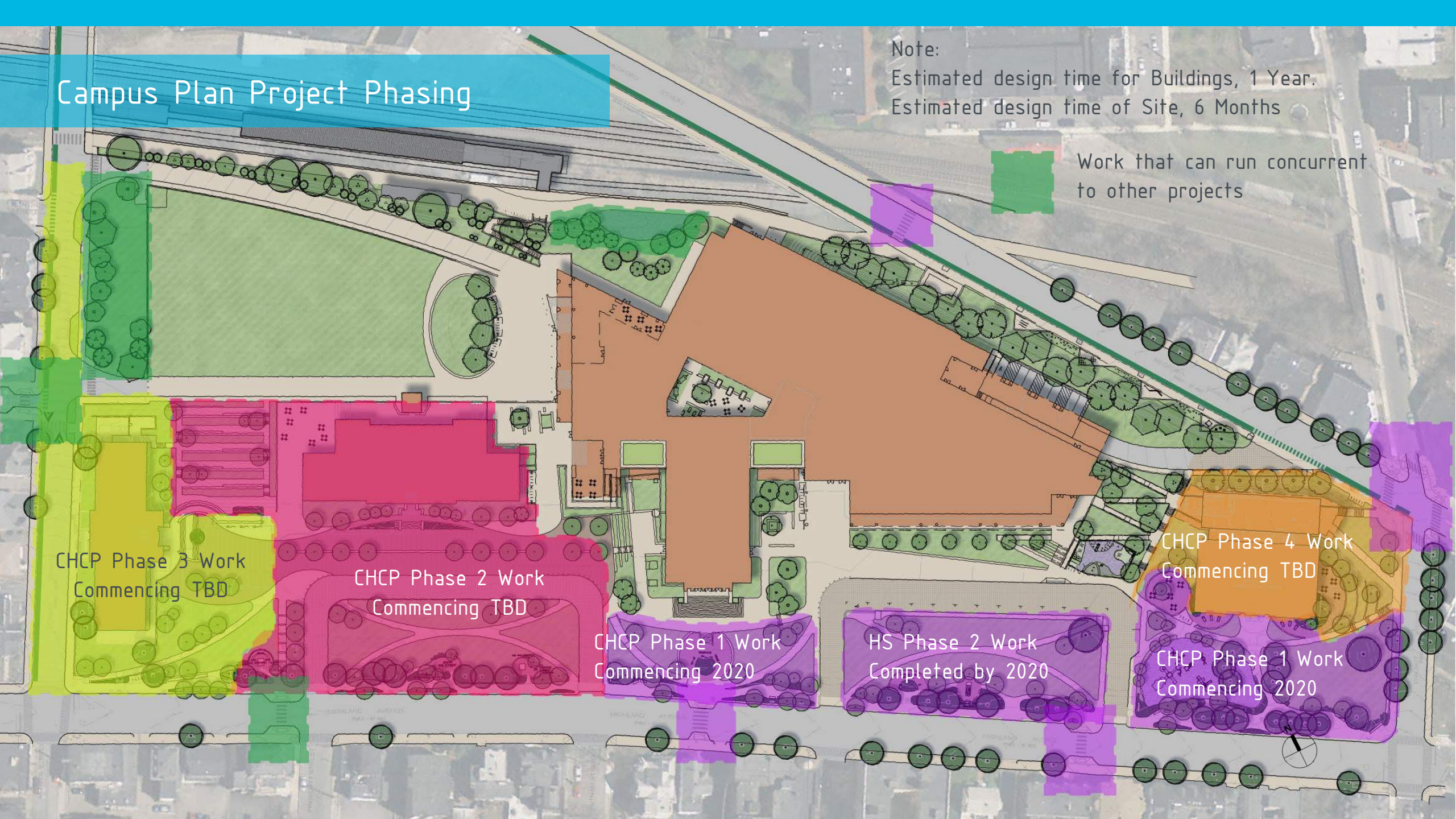
CHCP Phase 2 Work
Commencing TBD

CHCP Phase 1 Work
Commencing 2020

HS Phase 2 Work
Completed by 2020

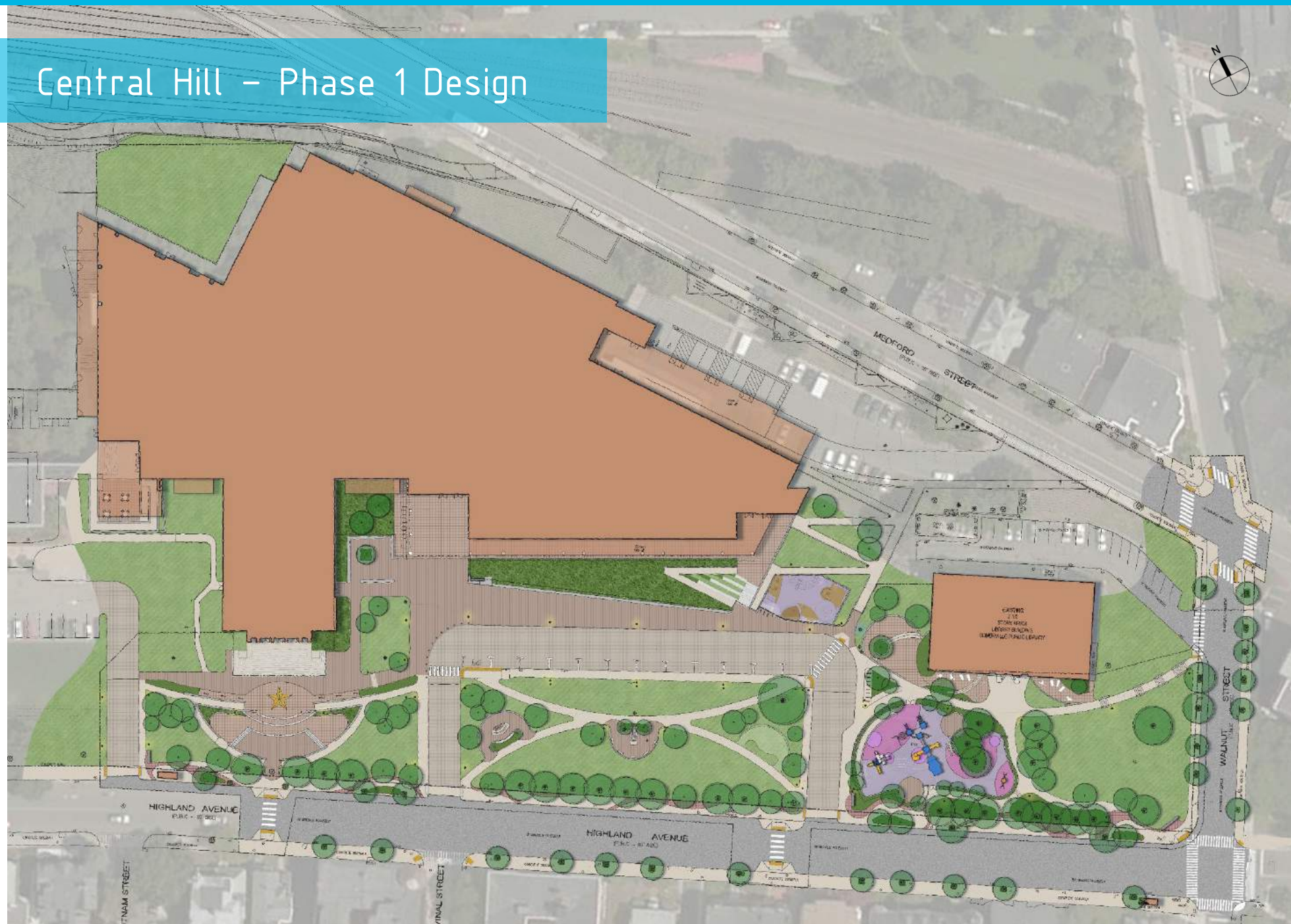
CHCP Phase 4 Work
Commencing TBD

CHCP Phase 1 Work
Commencing 2020



Phase 1 Design

Central Hill – Phase 1 Design



Library Green and Central Hill Playground



Library: usable green space, terraced edge, adjacent play space



Library Green and Central Hill Playground



Central Hill Playground



Cremin Playground



East Somerville Community School

Central Hill Playground



Interactive Games App –
Winter Hill Community School



Incorporating Slopes and Grade Changes–
Winter Hill Community School (above), Chuckie Harris Park (right)



Central Hill Playground



Winter Hill Community School –
Incorporating Existing Trees



Lincoln Park–
Seating / Performance Area
(above)
Stormwater Feature (left)

Central Hill Playground



Overhead Elements



Toddler Swings



"Cozy" Play Elements



Colorful Play Surfacing



Splash Pad

Central Hill Playground Theme Ideas



Nature

Central Hill Playground Theme Ideas



Science /
Technology /
Futuristic



Central Hill Playground Theme Ideas



Abstract Artistic



Memorial Walk – Central Hill Campus Plan



Centralized / chronological placement of memorials



1. Civil War Memorial



1. Memorial Cannons

2. Unitarian Memorial



3. Spanish War /
Philippine / China



4. WWI Memorial



5. Dilboy
Monument



6. Somerville Honor Roll



7. Korean War Memorial



8. Vietnam War Memorial

9. Future Memorial

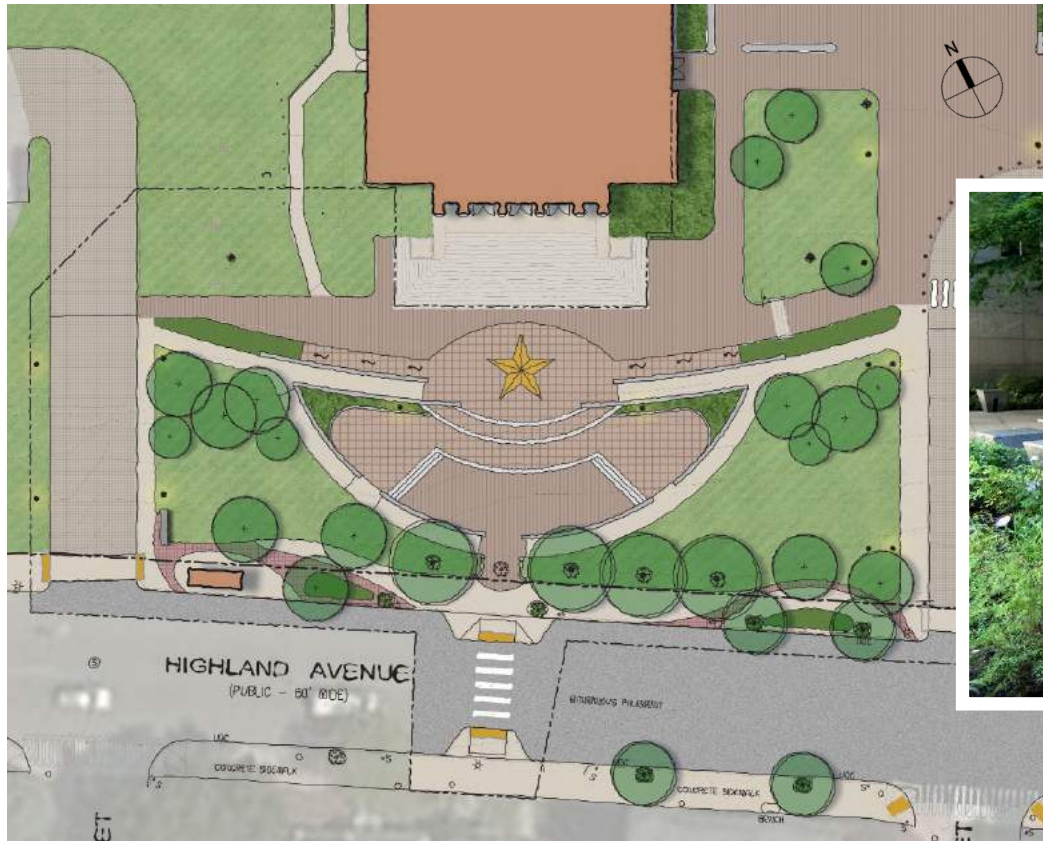
Memorial Walk



1. Korean War Memorial



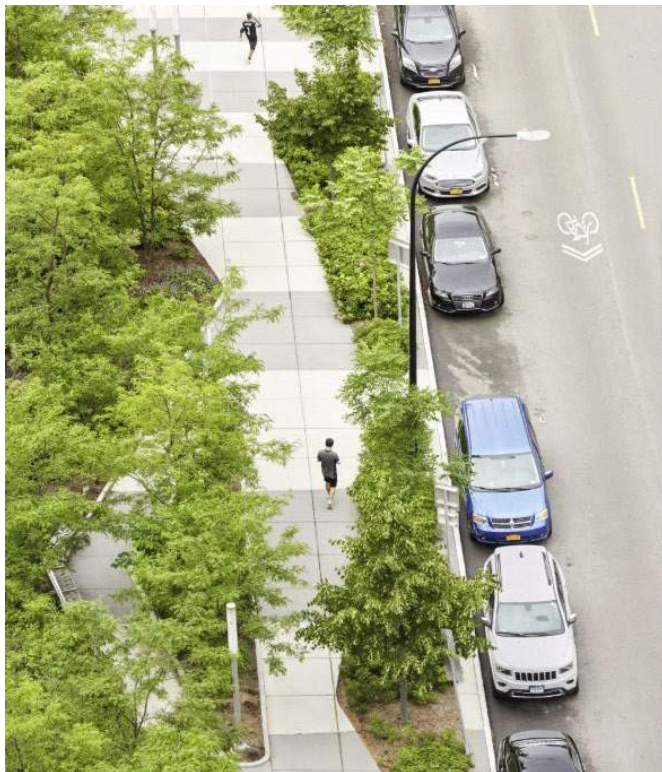
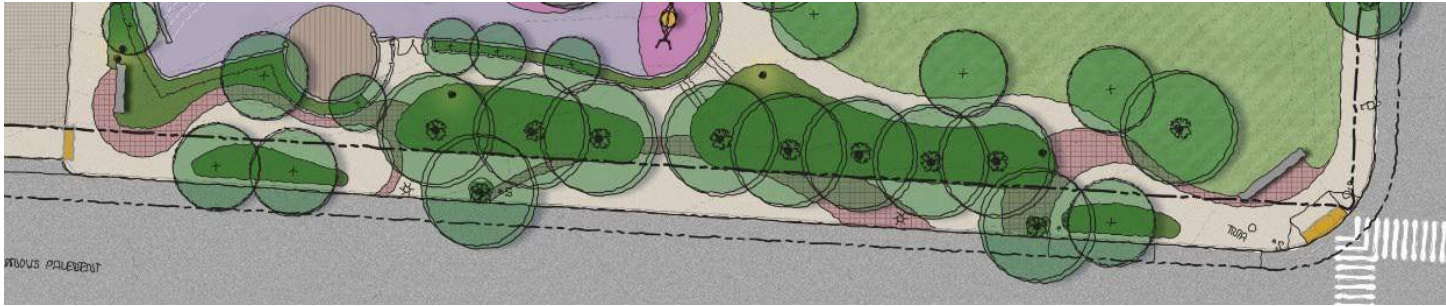
Memorial Walk



Memorial to War Eras and Gold Star Service Members



Streetscape



Streetscape Paving Materials



Streetscape Rain Garden / Bio-retention



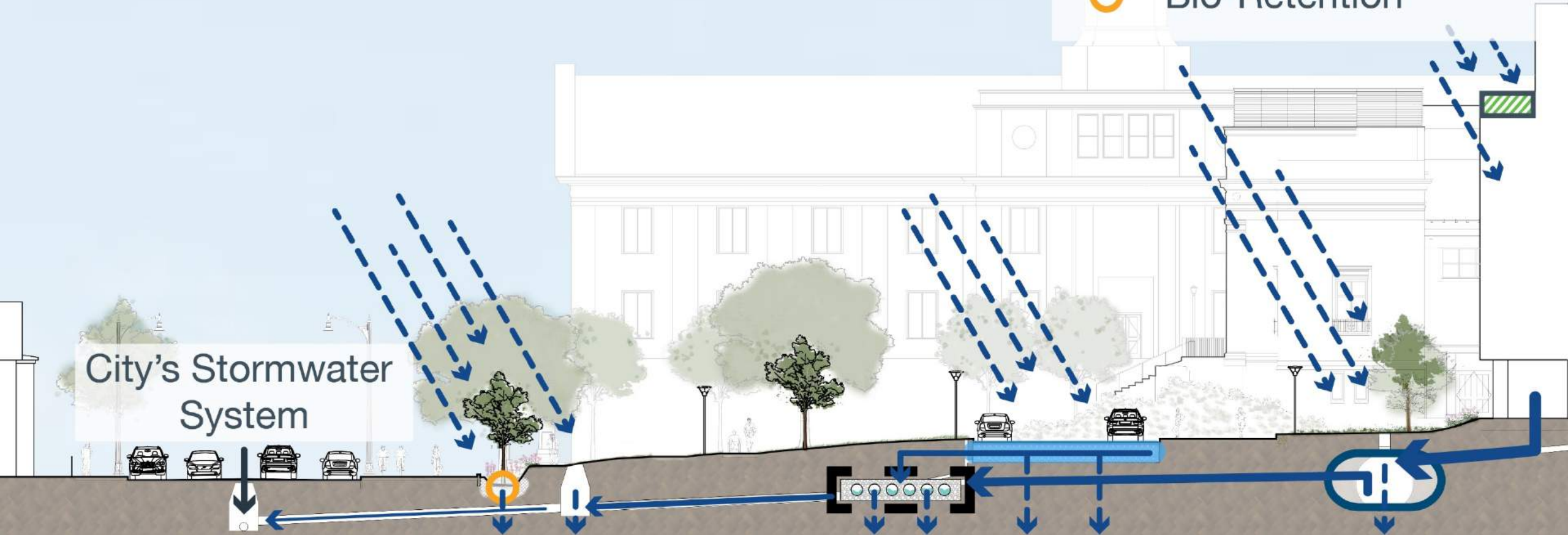
Lighting Standards



Seating Elements

Sustainability Opportunity

-  Green Roof
-  Porous Pavement
-  Infiltration System
-  Rainwater Harvesting
-  Bio-Retention



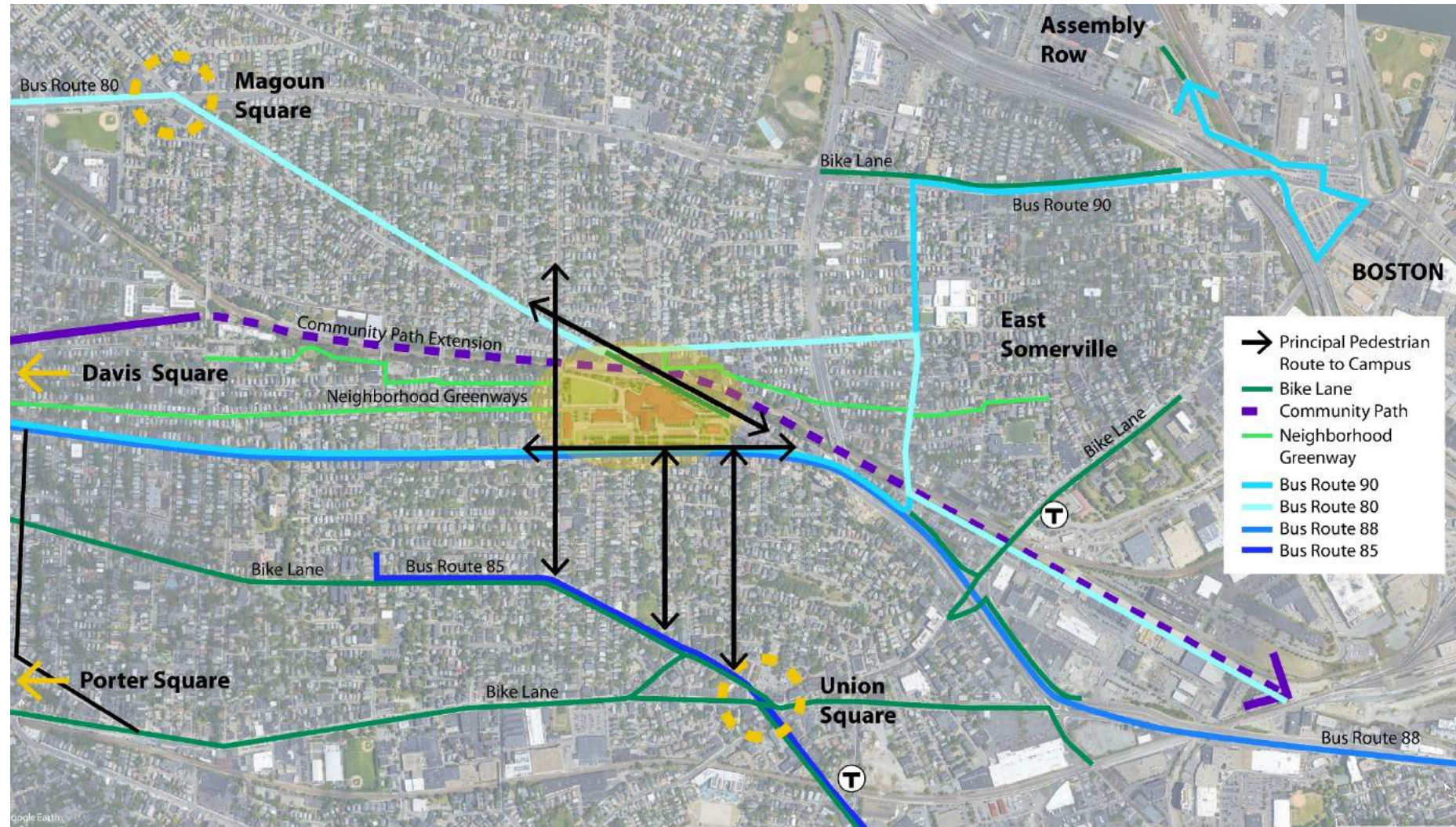
Transportation

Modes

- Vehicular Access
- Transit
- Biking
- Pedestrian Access

Topics

- Site access
- Traffic calming
- Grade challenges
- Community path
- Future street traffic patterns
- MBTA bus stops

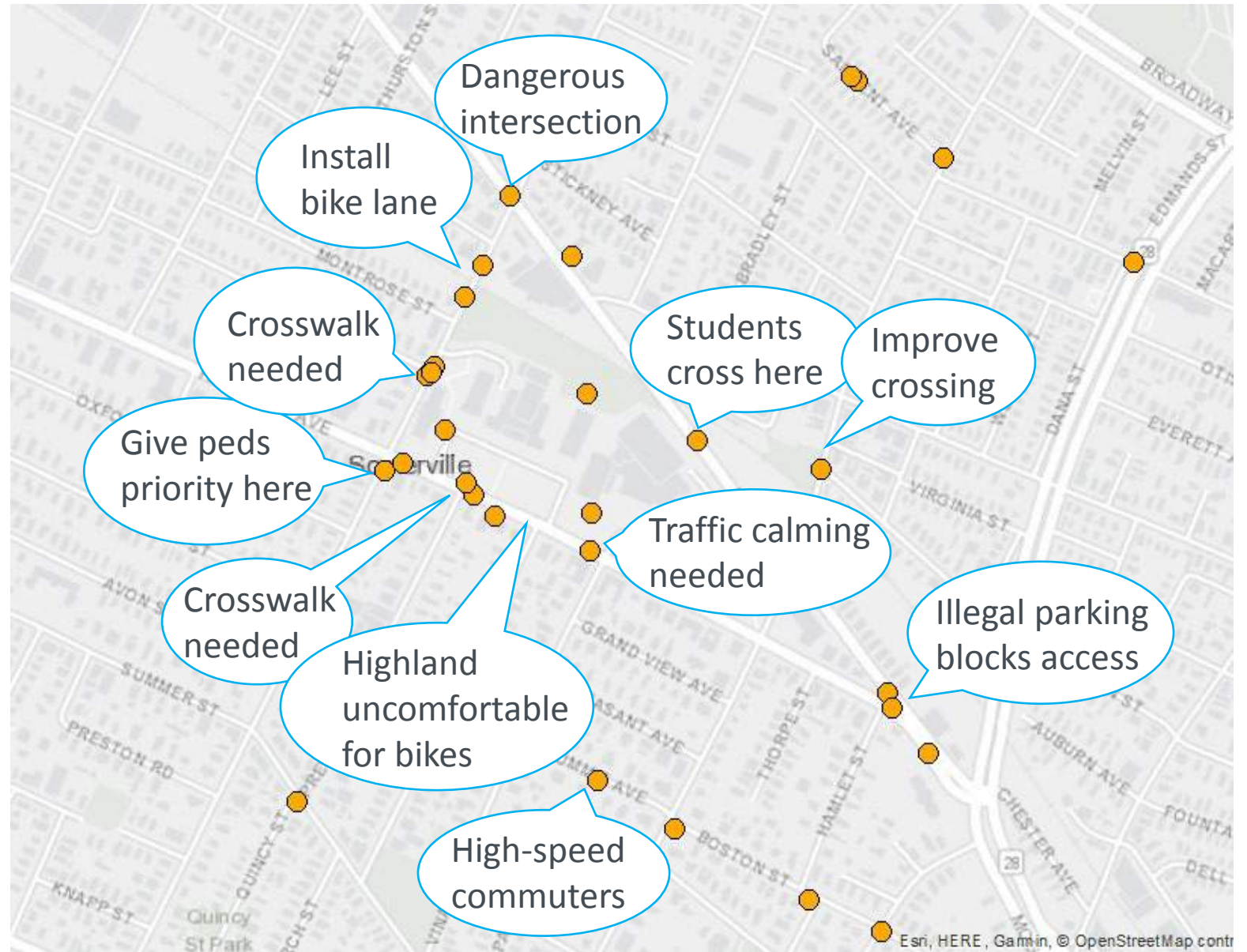


From the Wikimap: Community Member Identified Areas of Concern




Respondents from Teele Square, Porter Square, Spring Hill, Winter Hill, Union Square, Hillside, East Somerville

Most frequent responses identified:

- Locations for crosswalks
- Dangerous/ uncomfortable intersections and ideas for improvement



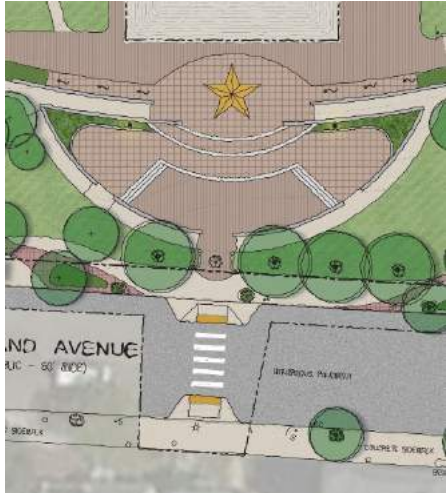
Pedestrian Access

-  Proposed New Crossing
-  Suggested Crossing Improvements
-  Phase 1 Improvements



Pedestrian Access

Crossing Improvements



Rectangular Rapid Flashing Beacon on Highland at Memorial to War Eras and Gold Star Service Members



Existing Rectangular Rapid Flashing Beacon in Somerville



Curb Extensions on Highland Ave at Library



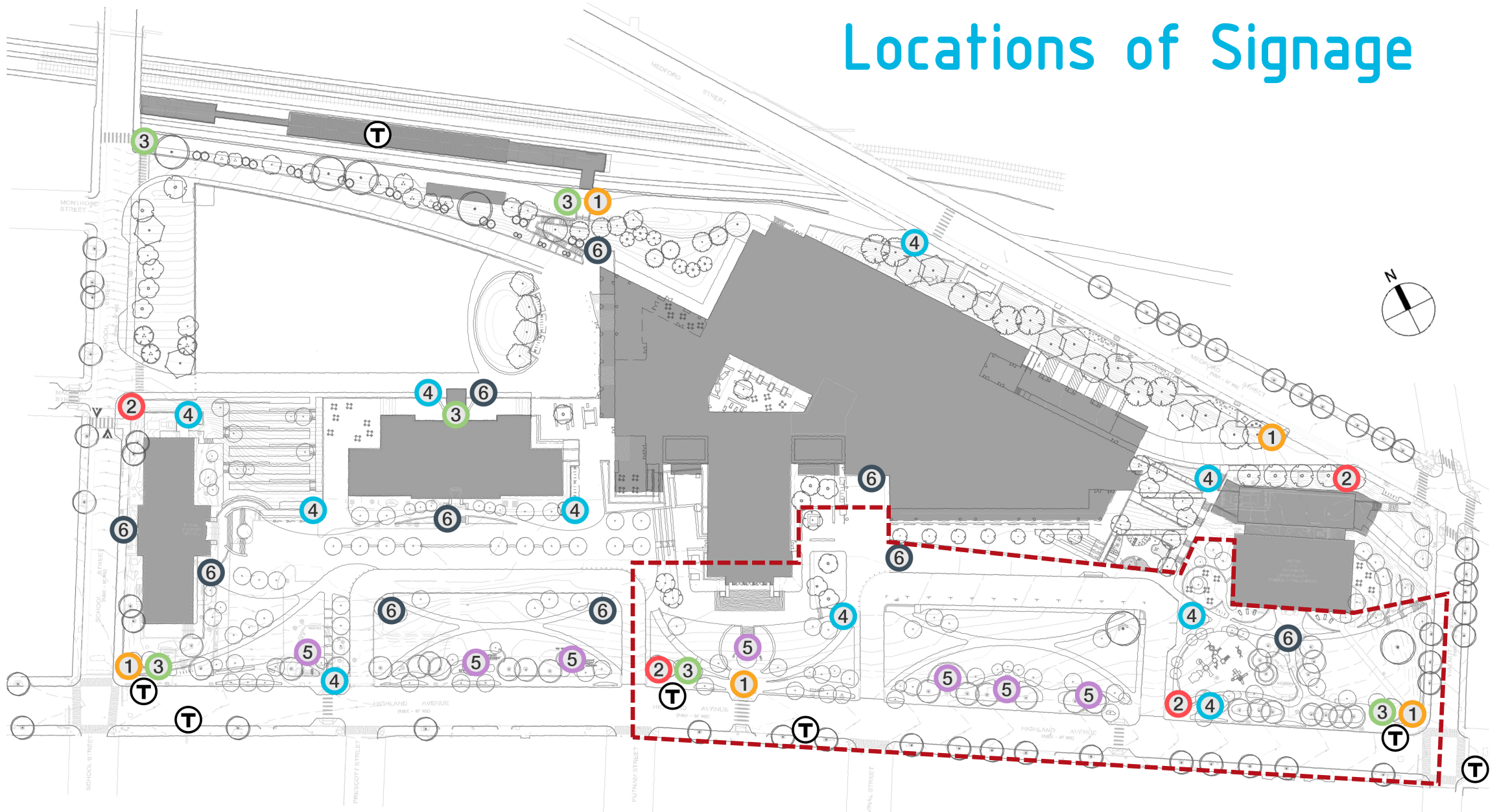
Curb Extensions at Walnut and Medford -

- Extend curb to shorten crossing time for pedestrians and widen sidewalk
- Provide directional crossings rather than existing apex
- Improve crossing signals

Signage Levels

		Audience	Sign Type
	Level 1	Everyone	Gateway or Campus Markers
	Level 2	Vehicles	Roadside Pylons
	Level 3	Unfamiliar Pedestrians	Map & Directory
	Level 4	Regular Pedestrians	Individual Destination Marker
	Level 5	Monument Patrons	Informational Placard
	Level 6	Everyone	Building Marker

Locations of Signage



Community Path

Activate adjacent space at community path



Discussion

Feedback

To offer feedback or thoughts please contact:

ckirk@somervillema.gov

Project Timeline

- Campus Planning Study Complete Dec 28, 2018
- Phase 1 Design Begins May 24, 2019
- Community Meeting #1 July 22, 2019
- Community Meeting #2 TBD
- Phase 1 Design Documentation Complete Nov. / Dec. 2019
- Phase 1 Construction Begins Spring 2020
- Phase 1 Construction Complete Anticipate Fall 2021

Next Steps

- Document feedback from tonight's session
- Review with City of Somerville
- Continue to develop design
- Community Meeting #2 (date TBD)
- Incorporate feedback and finalize design
- Design documentation complete Nov./ Dec. 2019

Thank you

For more information:

www.somervillma.gov/highschool/

www.somervillema.gov/centralhillplan/

Somerville High School Construction Camera:

<https://app.oxblue.com/open/Suffolk/somervillehighschool>