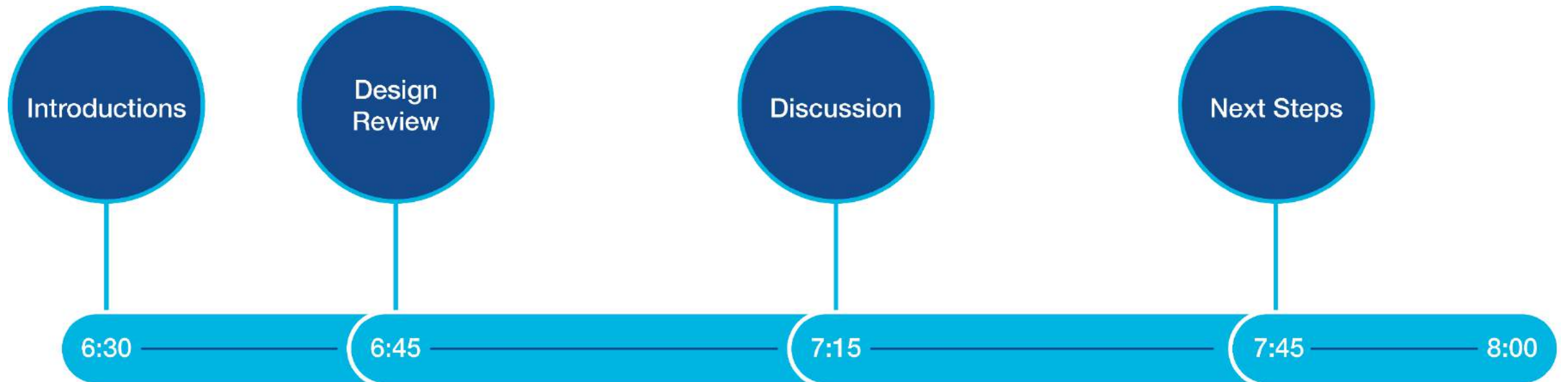




# Central Hill Phase 1 Design – Community Meeting #2

# Tonight's Agenda



# City of Somerville

- Cortney Kirk, Streetscape and Public Space Planner
- Kristen Stelljes, Director, SomerStat
- Bryan Bishop, Director, Veterans' Affairs
- Emily Monea, Chief of Staff, City of Somerville
- Brad Rawson, Director, Mobility
- Rich Raiche, Director, Infrastructure and Asset Management
- Cathy Piantigini, Director, Libraries
- Lilly Sundell-Thomas, Deputy Director, Libraries
- Jeff Curley, Chief of Staff, Somerville Public Schools

# Project Team

## SMMA

- Alex Pitkin, Senior Vice President
- Lorraine Finnegan, Principal
- Michael Fazio, Project Manager
- Laura Monies, Landscape Architect/Planner
- Erin Prestileo, Civil Engineer
- Ali Ucci, Graphic Designer
- Jack Dombrowski, Graphic Designer
- Peter Rebuck, Site Designer

## Building Conservation Associates

- Lisa Howe, Director of BCA New England

## Toole Design Group

- Stephanie Weyer, Landscape Designer

# Project Timeline

- Campus Planning Study Complete Dec 28, 2018
- Phase 1 Design Begins May 24, 2019
- Community Meeting #1 July 22, 2019
- Community Meeting #2 Sept. 23, 2019
- Phase 1 Design Documentation Complete Nov. 2019
- Phase 1 Construction Begins Spring 2020
- Phase 1 Construction Complete Anticipate Fall 2021



# Campus Plan Project Phasing

Note:

Estimated design time for Buildings, 1 Year.

Estimated design time of Site, 6 Months

Work that can run concurrent to other projects

CHCP Phase 3 Work  
Commencing TBD

CHCP Phase 2 Work  
Commencing TBD

CHCP Phase 1 Work  
Commencing 2020

HS Phase 2 Work  
Commencing by 2020

CHCP Phase 4 Work  
Commencing TBD

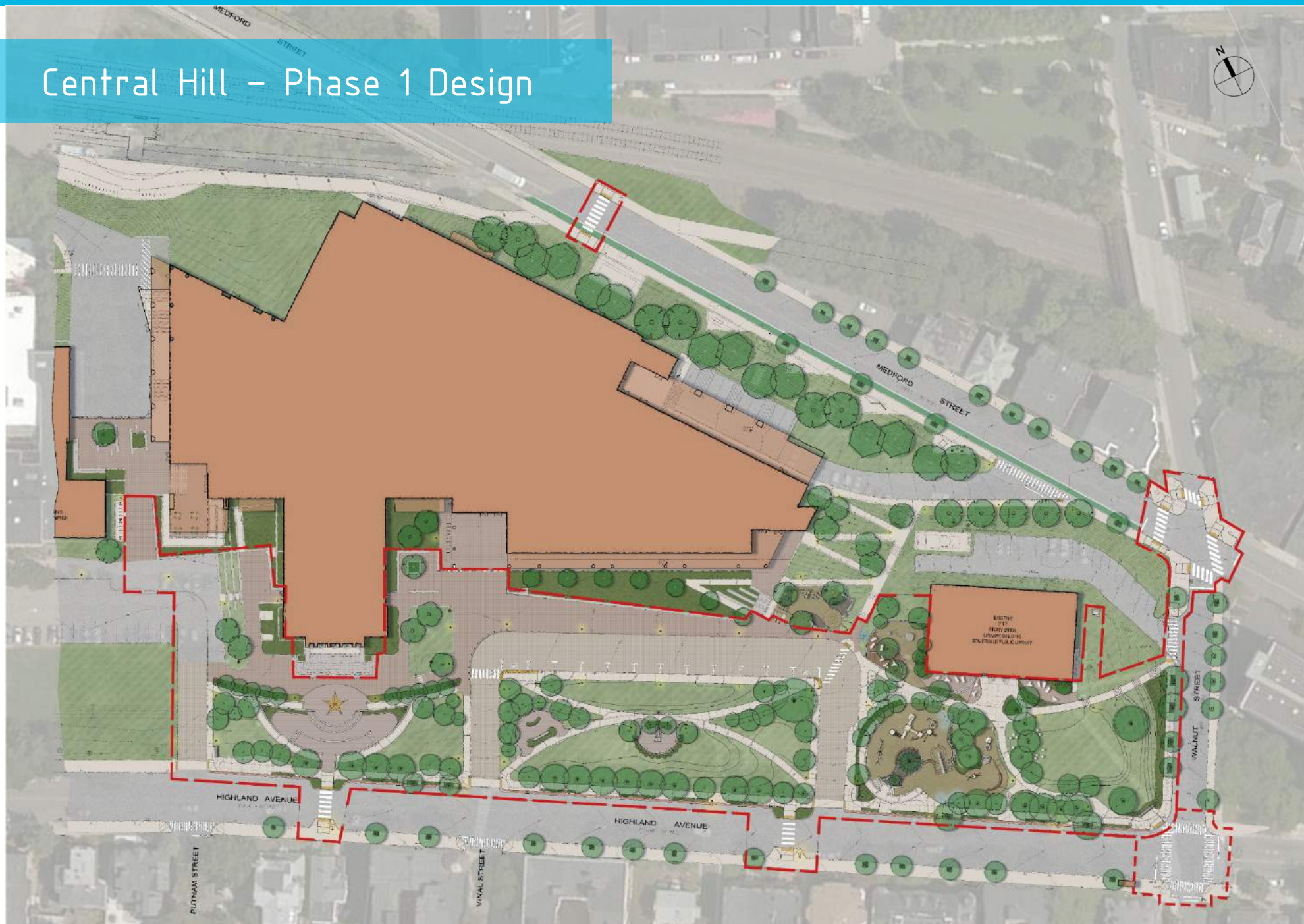
CHCP Phase 1 Work  
Commencing 2020



# Phase 1 Design

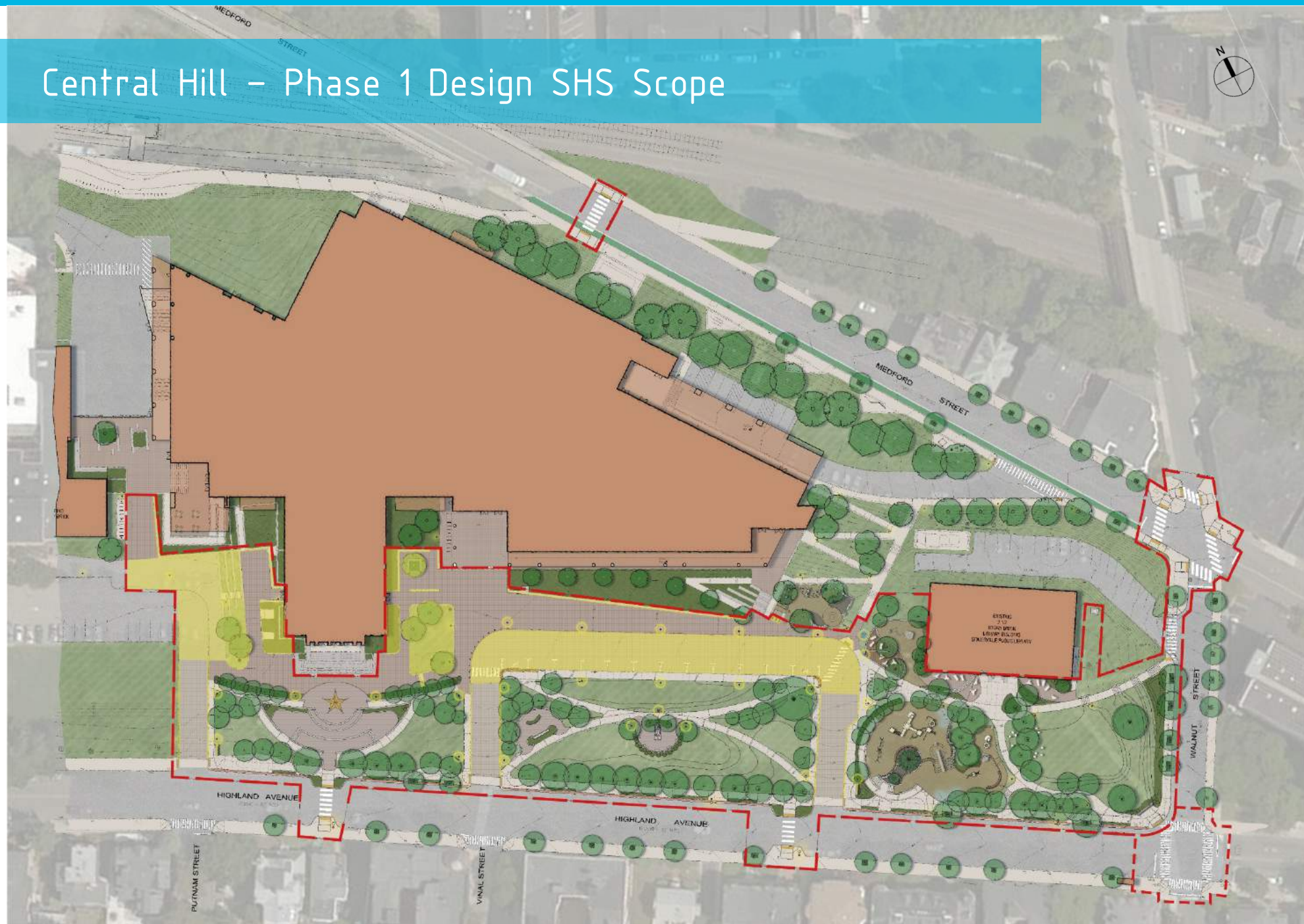


# Central Hill – Phase 1 Design



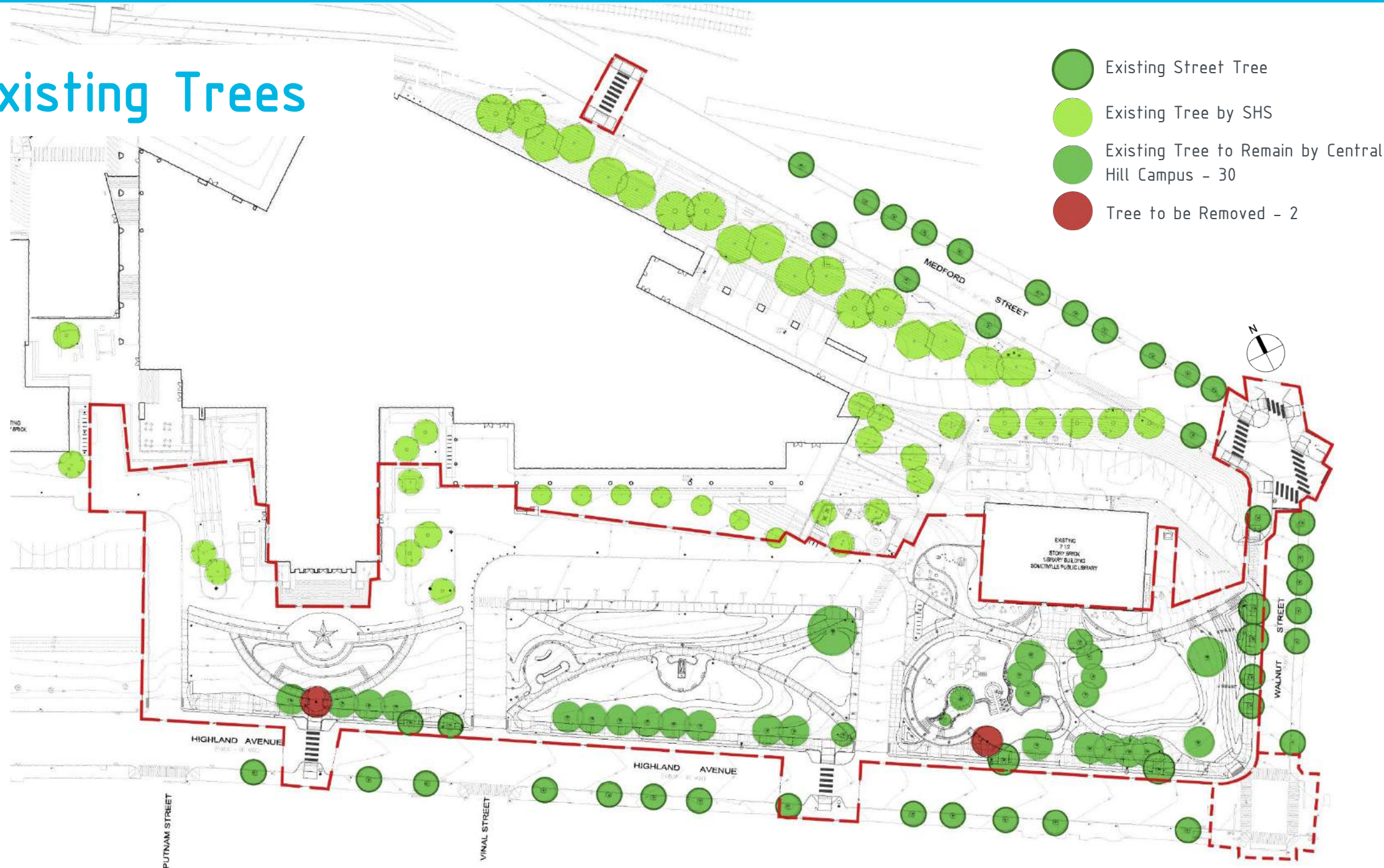


# Central Hill – Phase 1 Design SHS Scope





# Existing Trees





# Proposed Trees





# Library Green and Central Hill Playground



Library: usable green space, terraced edge, adjacent play space





# Central Hill Playground



Winter Hill Community School –  
Incorporating Existing Trees



Lincoln Park– Seating



Nature inspired materials and colors, incorporating nature where possible





# Central Hill Playground



Interactive Games App –  
Winter Hill Community School



Incorporating Slopes and Grade Changes–  
Winter Hill Community School (above), Chuckie Harris Park (right)





# Central Hill Playground



"Cozy" Play Elements



Splash Pad



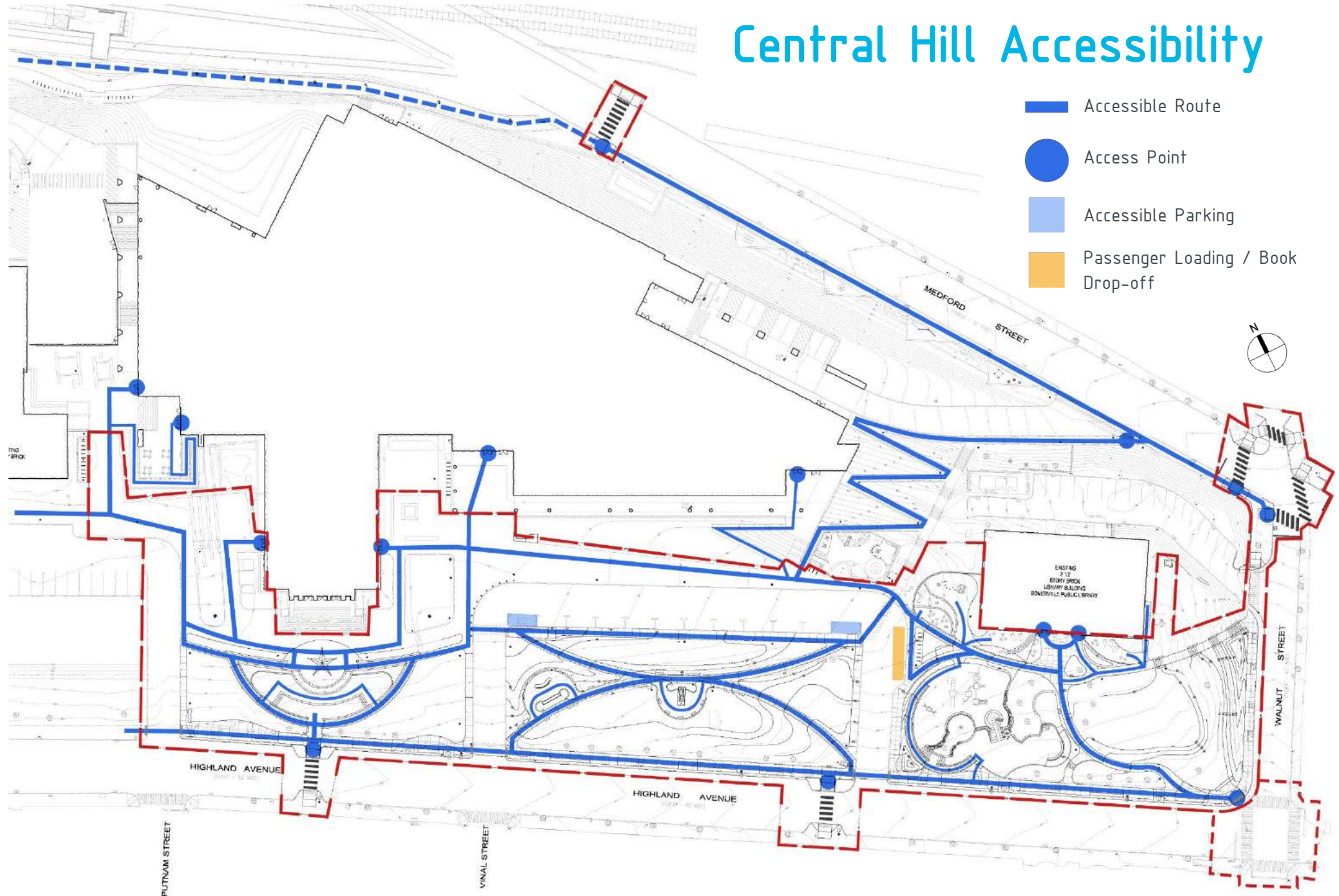
Toddler Swings



Nature based color schemes



# Central Hill Accessibility

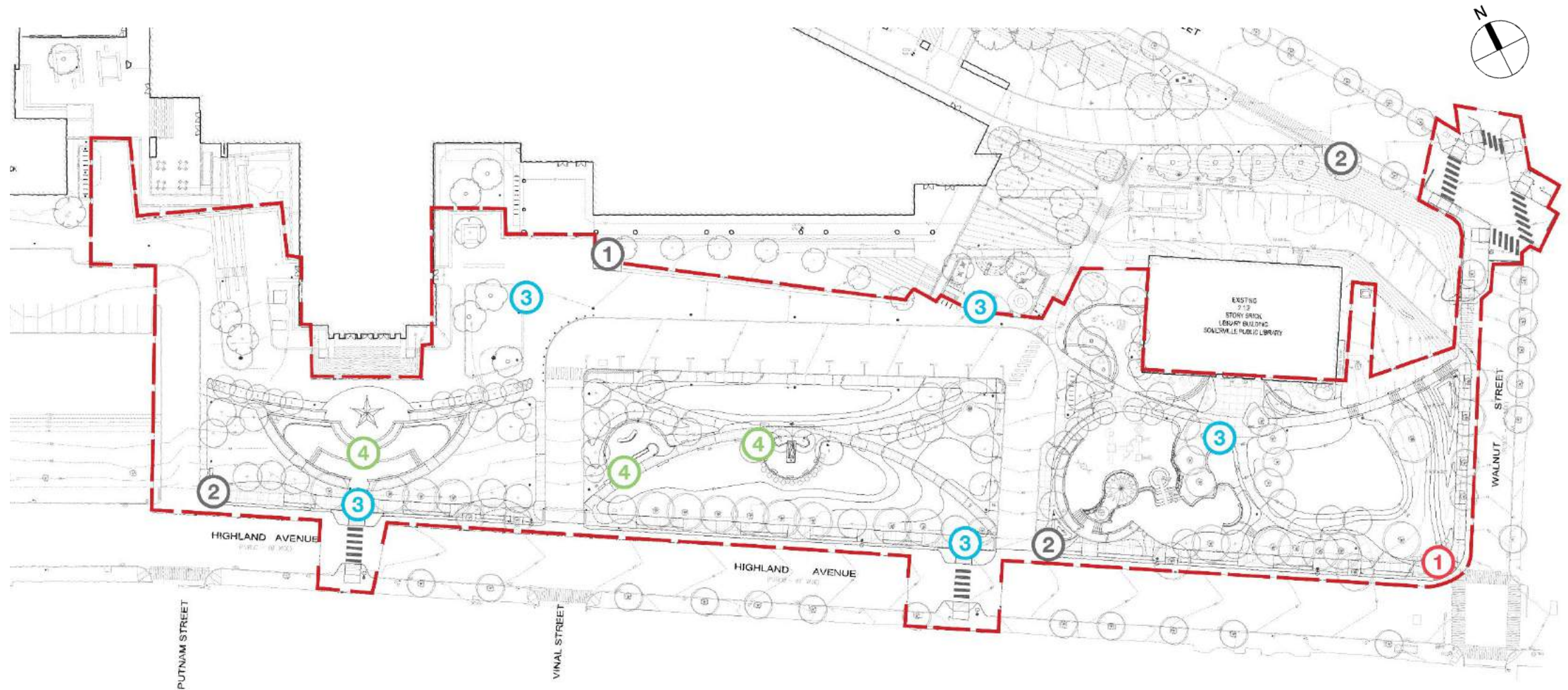


# Wayfinding – Signage Levels

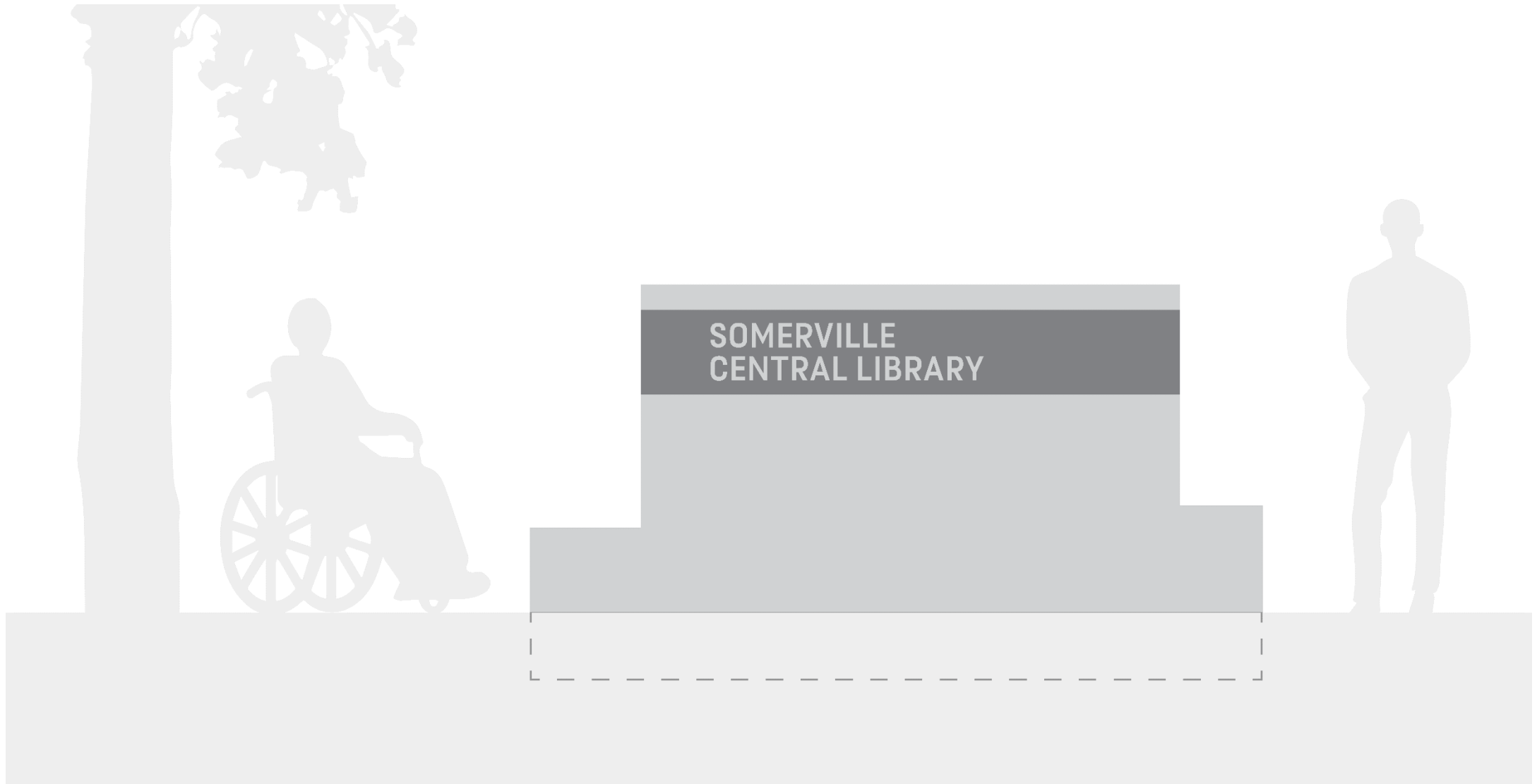
		Audience	Sign Type	Quantity
SHS scope	Level 1	Everyone	Building Marker	2
	Level 2	Vehicles	Roadside Pylons	2
CHCP Scope	Level 3	Unfamiliar Pedestrians	Map & Directory	5
	Level 4	Monument Patrons	Informational Placard	3



# Signage Locations



# Level 1 Signage

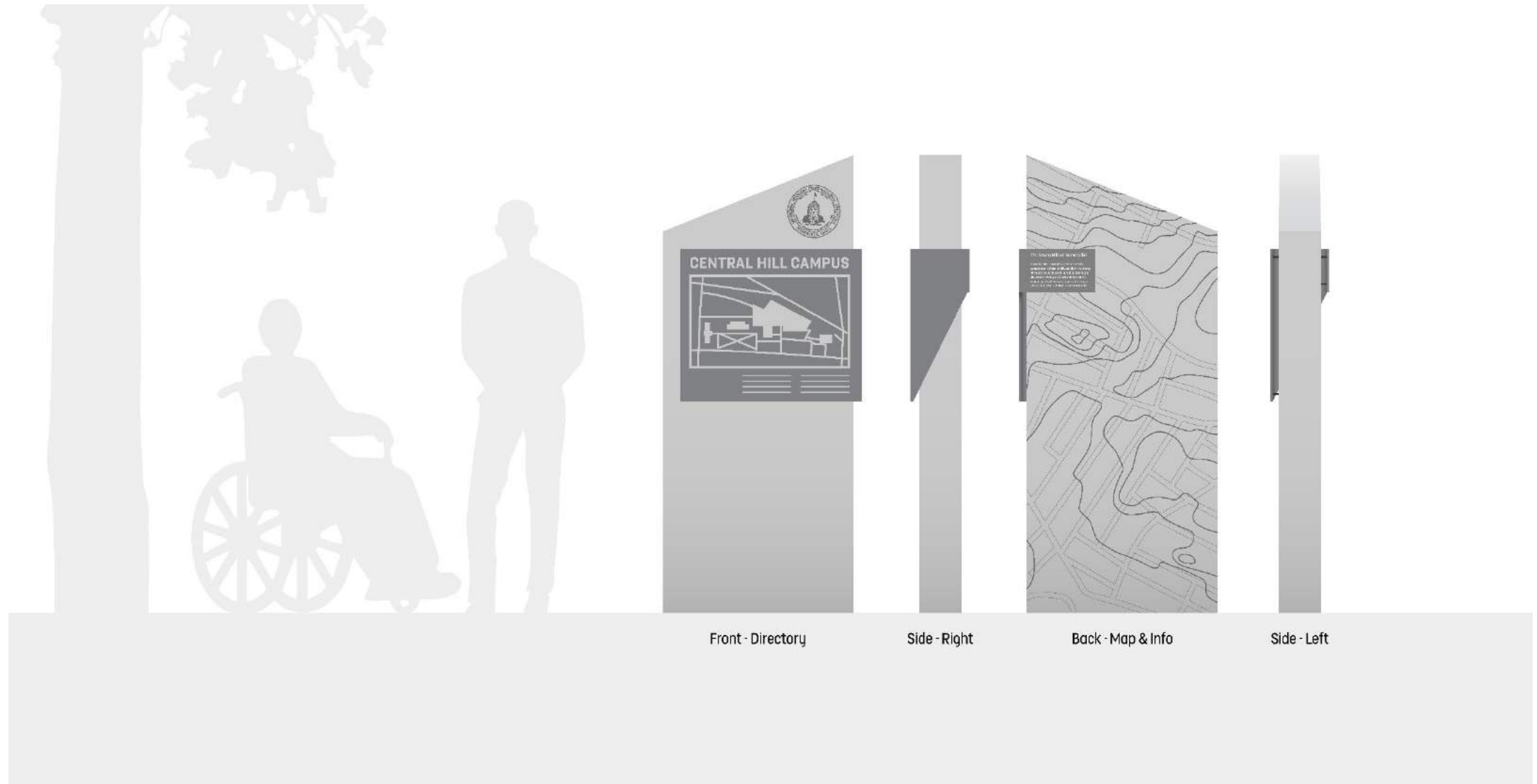


# Level 2 Signage

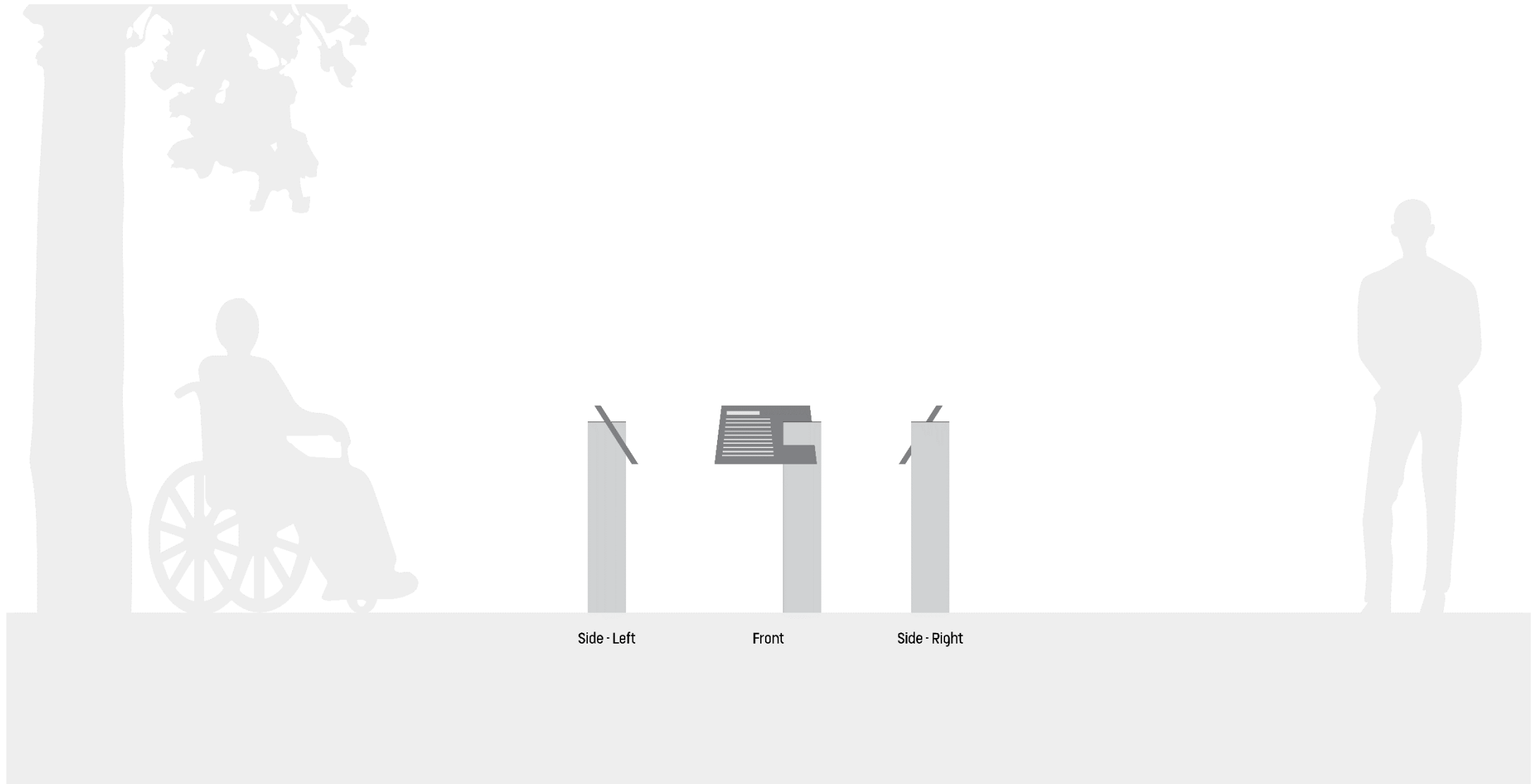




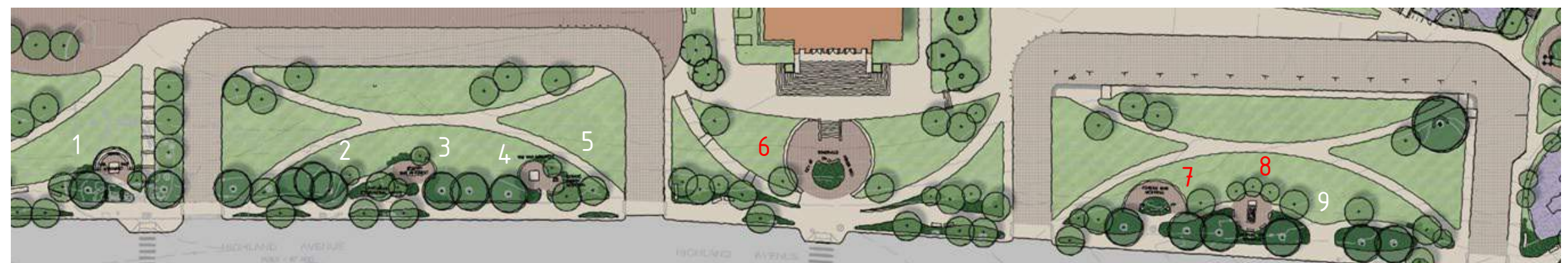
# Level 3 Signage



# Level 4 Signage



# Central Hill Campus Plan – Memorial Walk



Centralized / chronological placement of memorials



1. Civil War Memorial



1. Memorial Cannons



2. Unitarian Memorial



3. Spanish War / Philippine / China



4. WWI Memorial



5. Dilboy Monument



6. Gold Star Plaza

7. Korean War Memorial

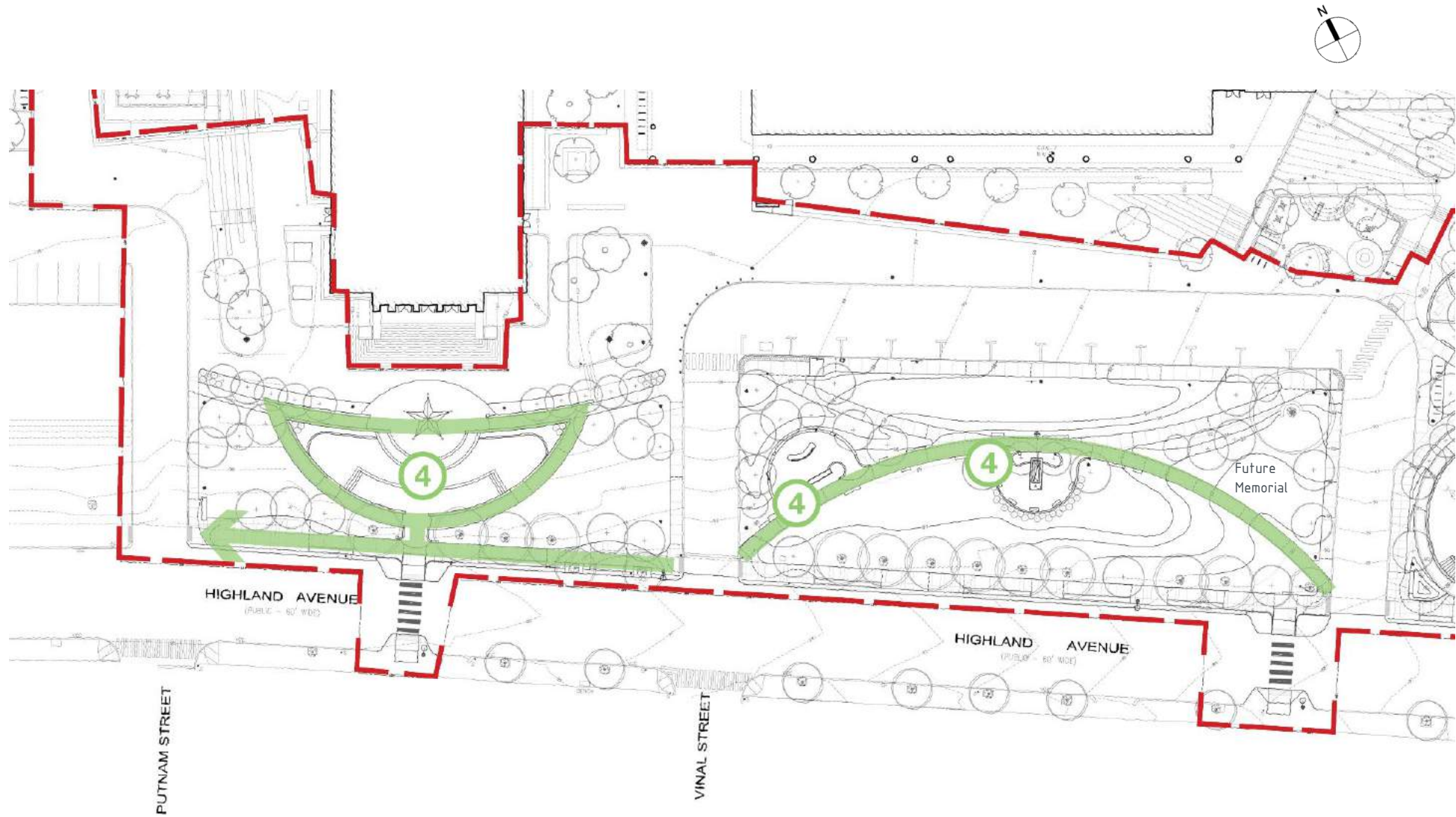


9. Future Memorial

8. Vietnam War Memorial



# Central Hill Memorial Walk





# Memorial Walk



1. Korean War Memorial



2. Vietnam War Memorial

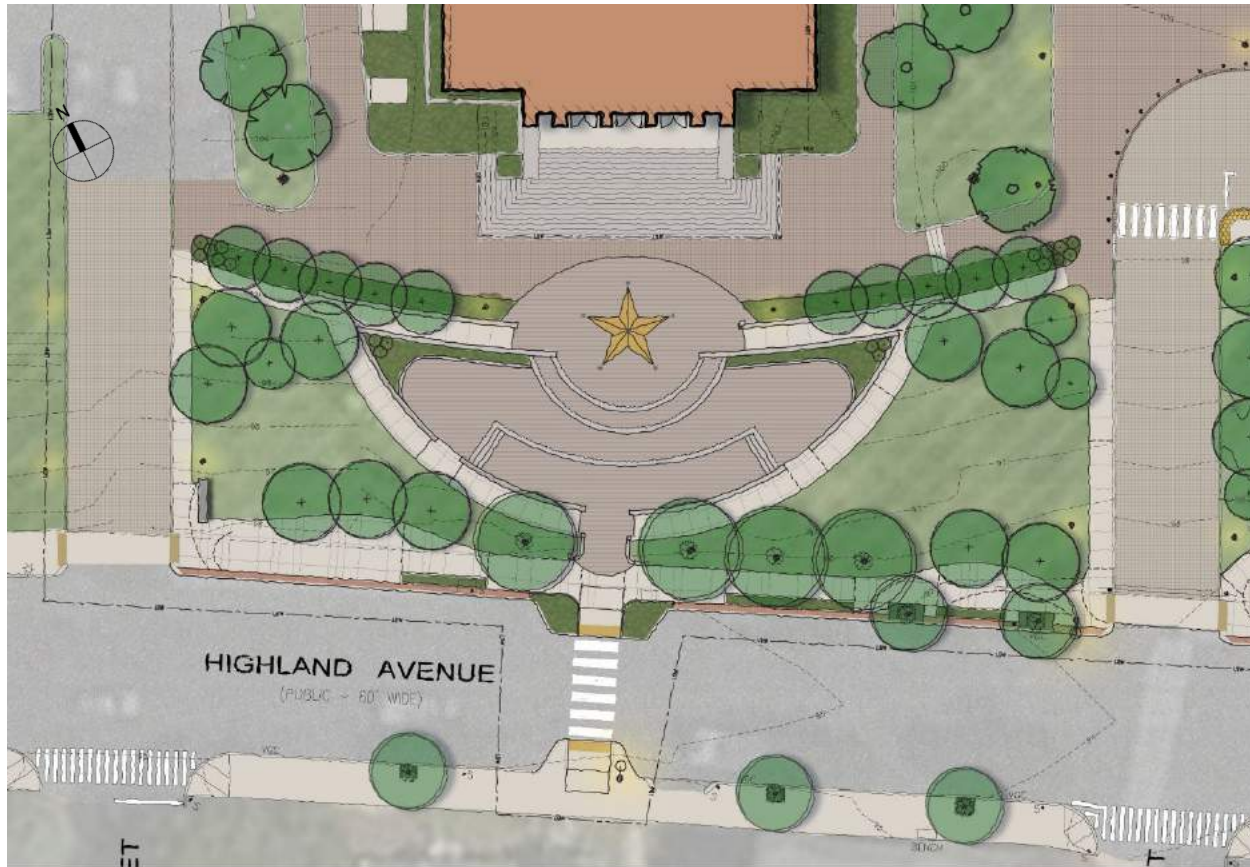


3. Future Memorial





# Gold Star Plaza





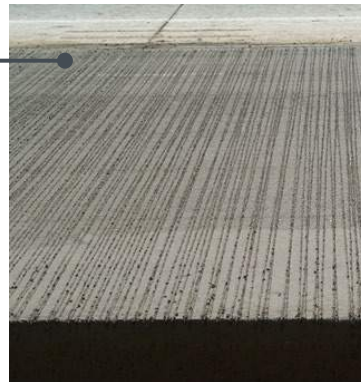
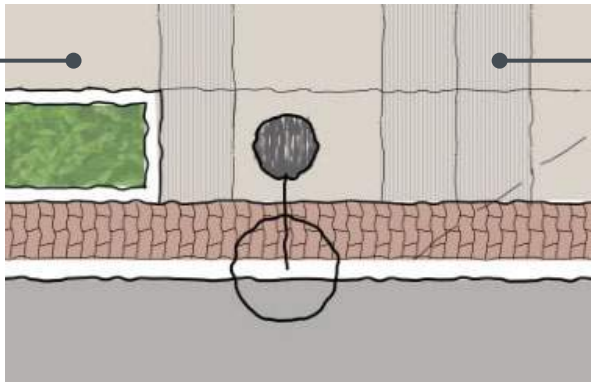
# Streetscape Elements



Street Light



Pedestrian Light



Streetscape Paving Materials



Seating / Trash / Recycling



# Streetscape Sustainability



Rain Garden Plantings




Streetscape Rain Garden / Bio-retention

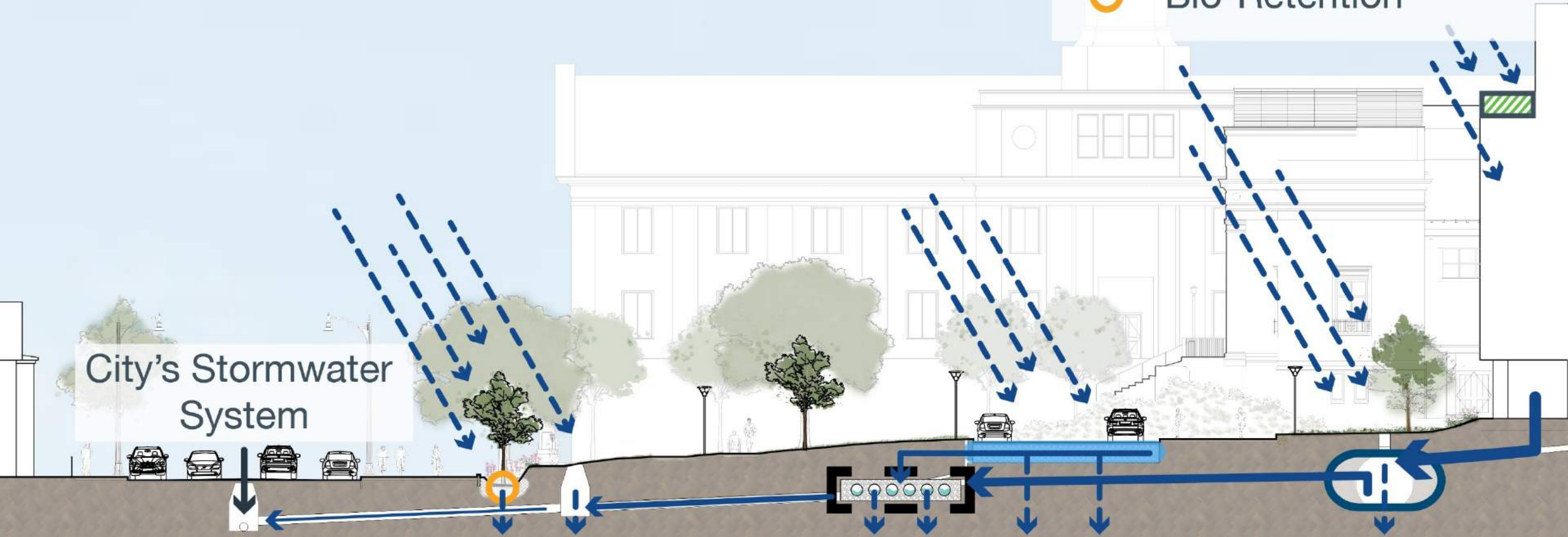


Street Trees



# Sustainability Opportunity

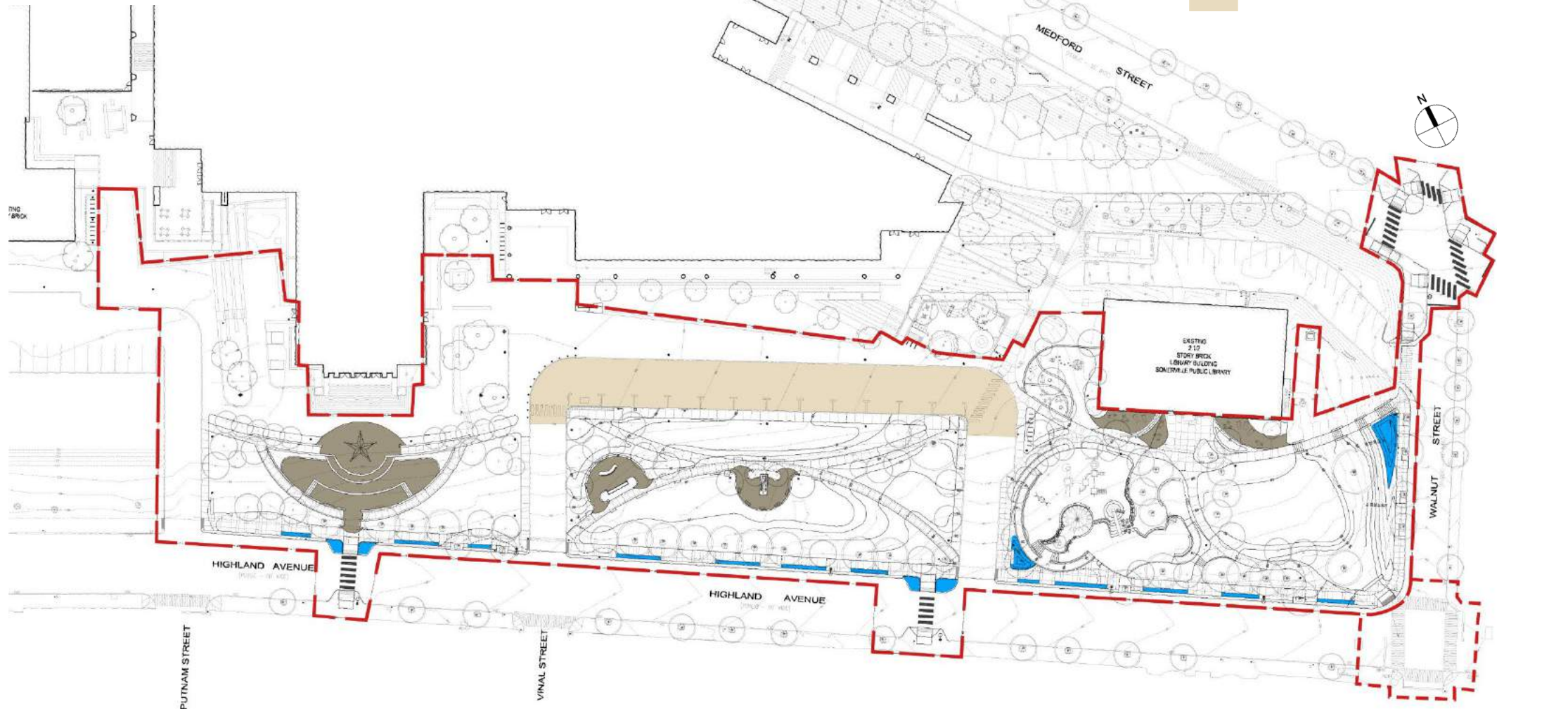
-  Green Roof
-  Porous Pavement
-  Infiltration System
-  Rainwater Harvesting
-  Bio-Retention





# Sustainability Opportunity

Central Hill Phase 1 Sustainability efforts decrease site run-off for the 100 year storm by 5%





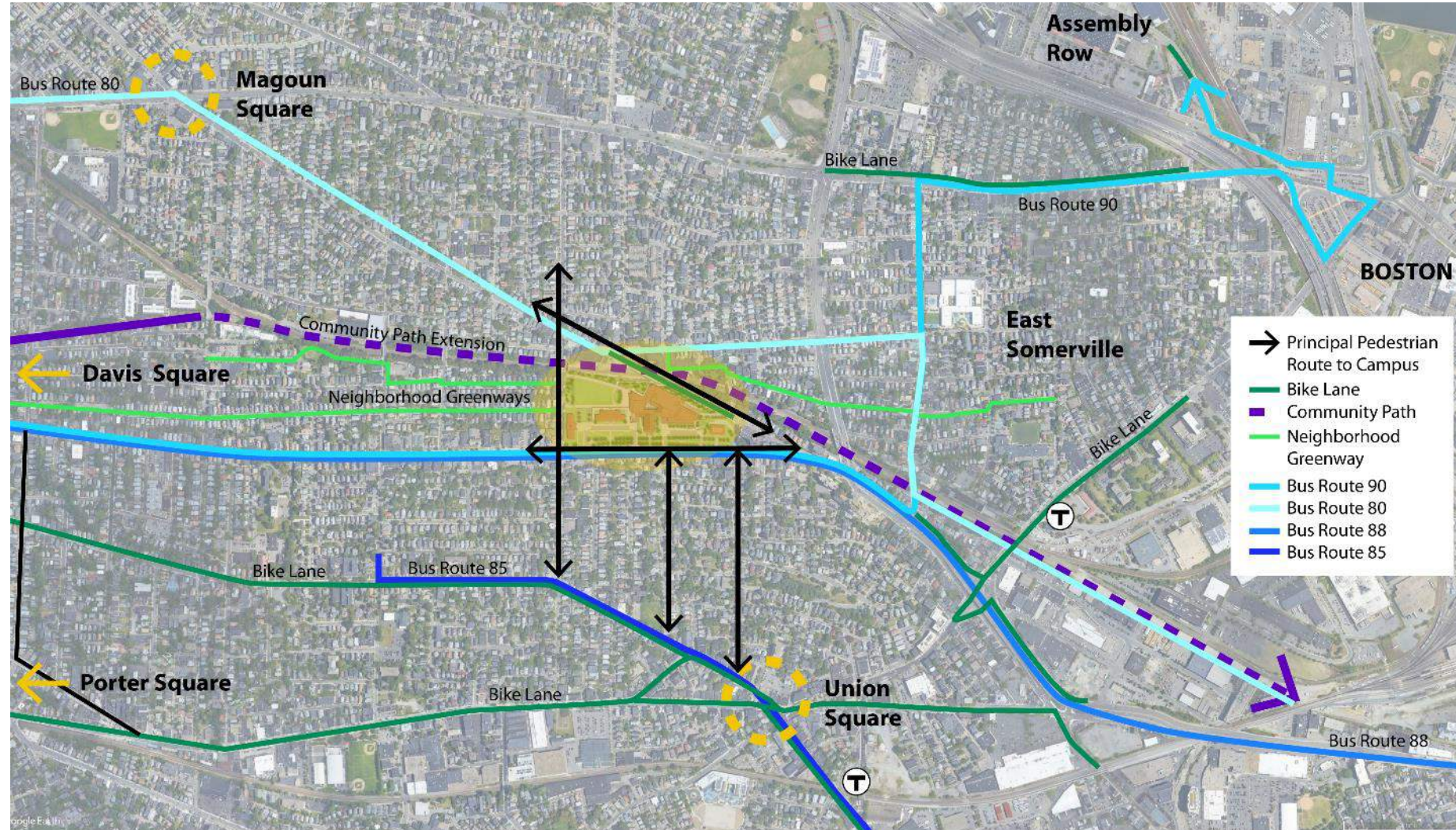
# Transportation

## Modes

- Walking
- Biking
- Driving
- Transit

## Topics

- Site access
- Traffic calming
- Grade challenges
- Community path
- Future street traffic patterns
- MBTA bus stops



Existing Conditions



# Community Member Identified Areas of Concern

Respondents from Teele Square, Porter Square, Spring Hill, Winter Hill, Union Square, Hillside, East Somerville

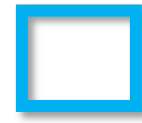
Most frequent responses identified:

- Locations for crosswalks
- Dangerous/uncomfortable intersections and ideas for improvement





# Crossings



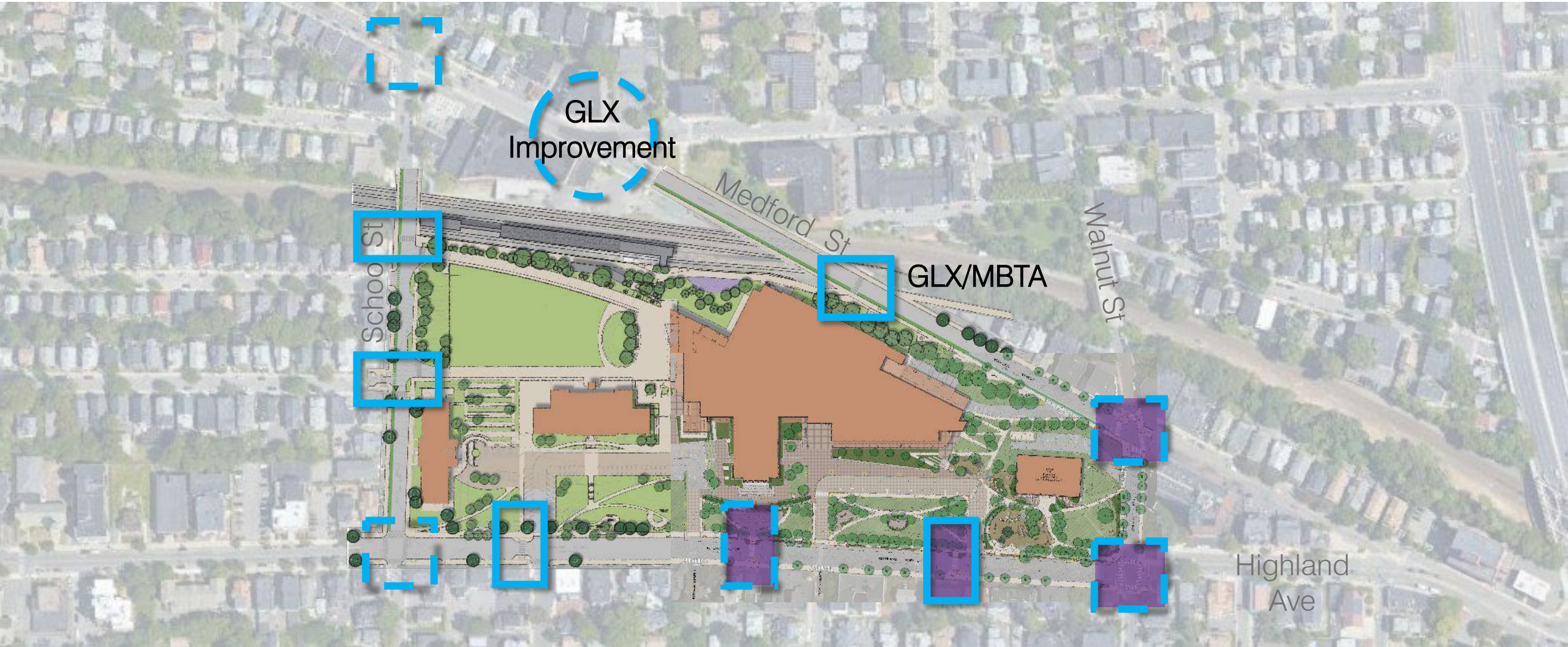
Proposed New Crossing



Phase I Design

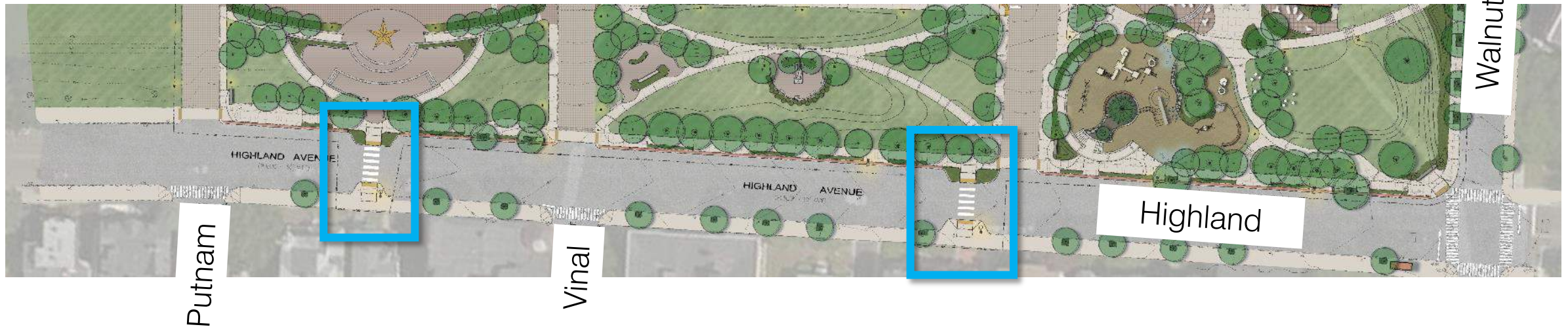


Suggested Crossing Improvements





# Proposed: Crossings with Curb Extensions



- Extend curb to shorten crossing time for pedestrians and widen sidewalk
- Increase visibility of pedestrians



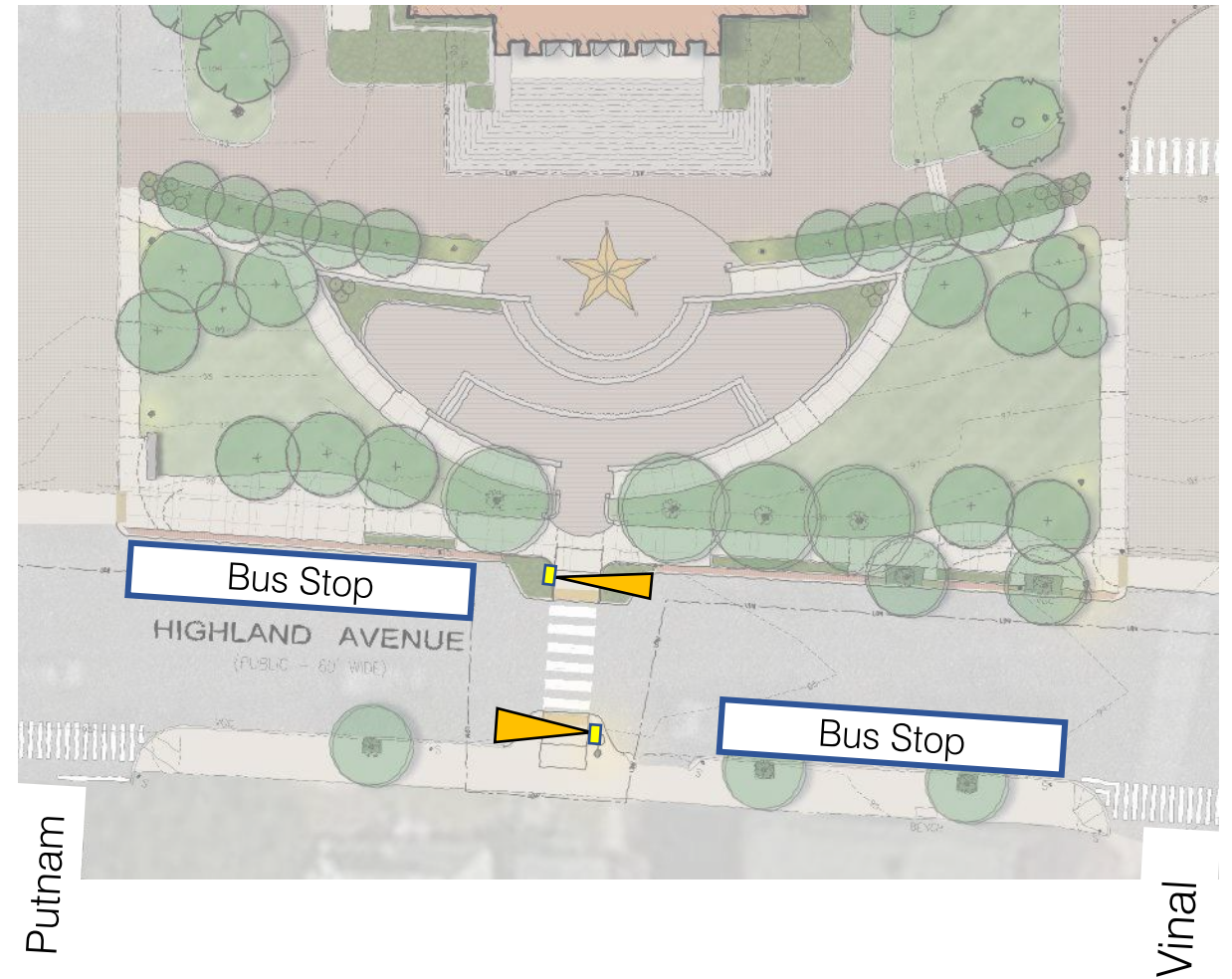
Curb Extensions With Stormwater Treatment



# War Memorial Proposed Crossing



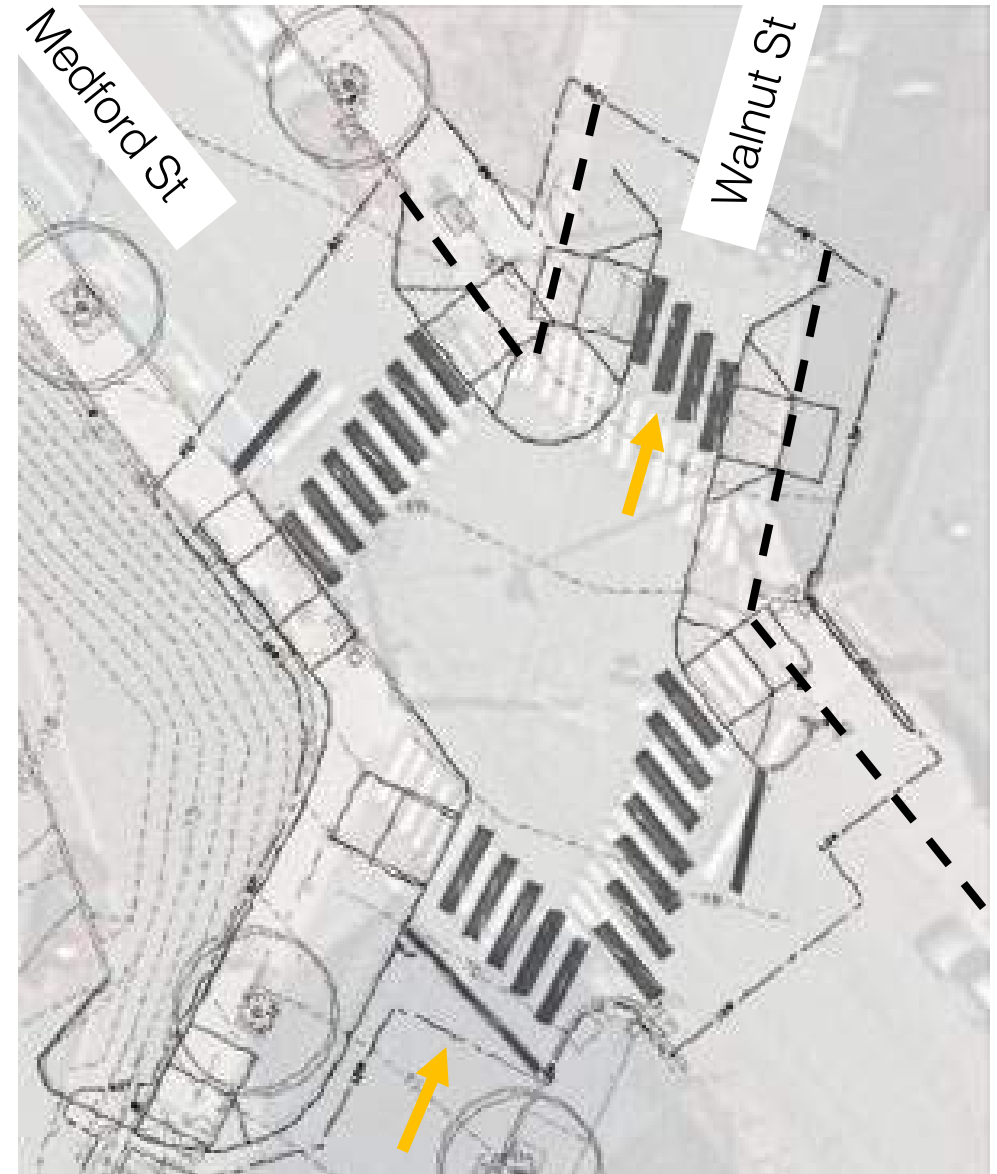
Rectangular Rapid  
Flashing Beacon





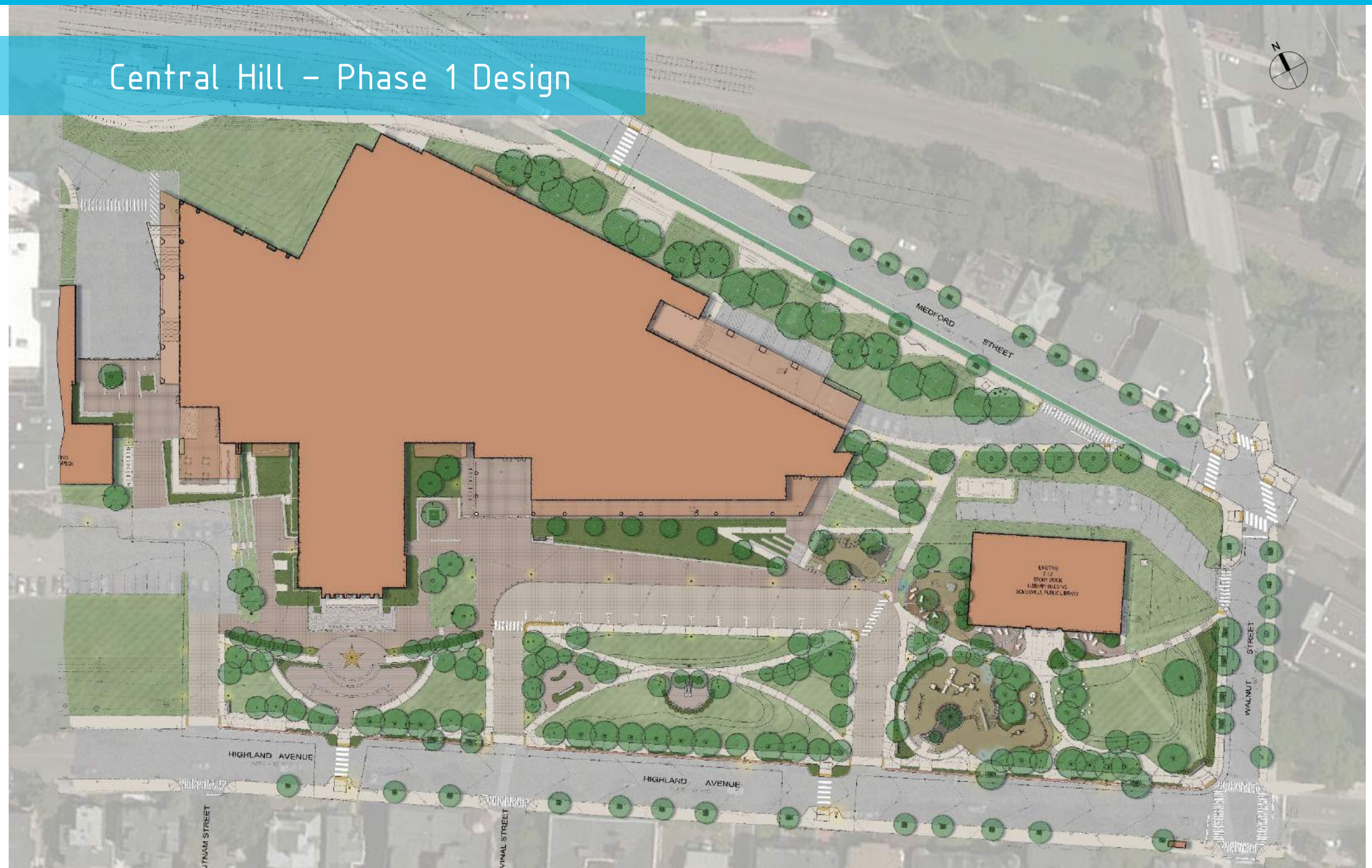
# Intersection Improvement: Medford St & Walnut St

- Curb extensions
- Directional crossings rather than apex





# Central Hill – Phase 1 Design





# Discussion

# Feedback

To offer feedback or thoughts please contact:

[ckirk@somervillema.gov](mailto:ckirk@somervillema.gov)

# Project Timeline

- Campus Planning Study Complete Dec 28, 2018
- Phase 1 Design Begins May 24, 2019
- Community Meeting #1 July 22, 2019
- Community Meeting #2 Sept. 23, 2019
- Phase 1 Design Documentation Complete Nov. 2019
- Phase 1 Construction Begins Spring 2020
- Phase 1 Construction Complete Anticipate Fall 2021



# Next Steps

- Deliver reconciled DD package to City for review
- Deliver 100% Construction Documents to City
- City Council Approval
- Construction Bid Period
- City Award Bid
- Construction begin April 2020

# Thank you

For more information:

[www.somervillma.gov/highschool/](http://www.somervillma.gov/highschool/)

[www.somervillema.gov/centralhillplan/](http://www.somervillema.gov/centralhillplan/)

Somerville High School Construction Camera:

<https://app.oxblue.com/open/Suffolk/somervillehighschool>