

A PROPOSAL FOR 30-32 WHITMAN STREET
 30-32 WHITMAN ST., SOMERVILLE, MA 02144
DOUGLAS OKUN & ASSOCIATES

DATE: 06-12-2019
 SCALE: 1/8" = 1'-0"

A1- PROPOSED BASEMENT PLAN

156 Mount Auburn Street, Cambridge, MA 02138 /
 (617) 491-4600 / doug@doassoc.com / www.douglaskun.com

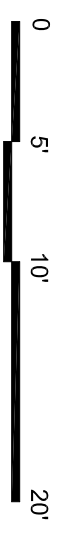
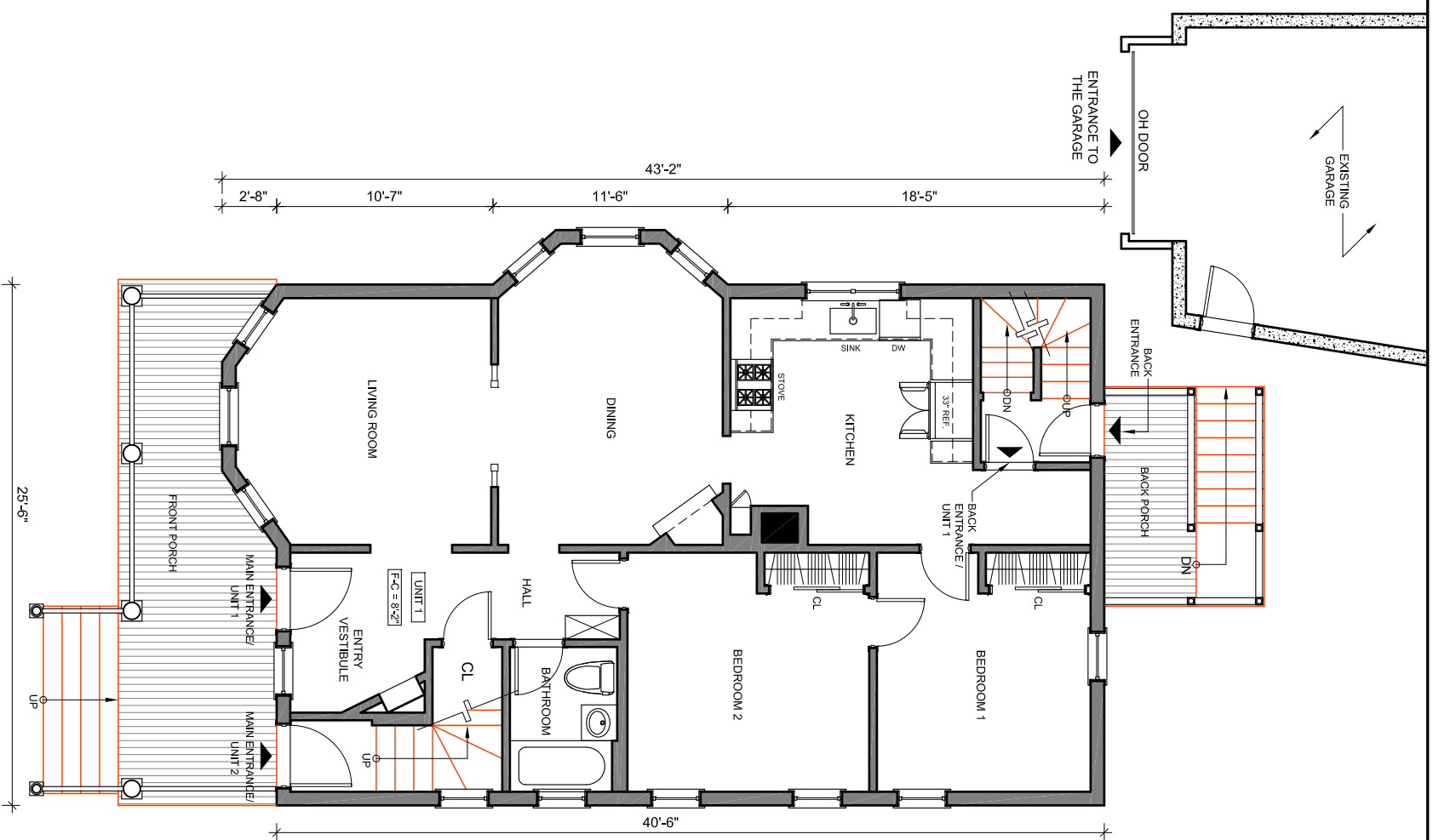


N

A PROPOSAL FOR 30-32 WHITMAN STREET
30-32 WHITMAN ST., SOMERVILLE, MA 02144
DOUGLAS OKUN & ASSOCIATES

DATE: 06-12-2019
SCALE: 1/8" = 1'-0"

A2- PROPOSED FIRST FLOOR PLAN





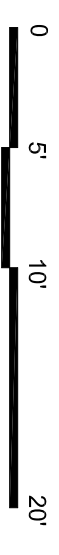
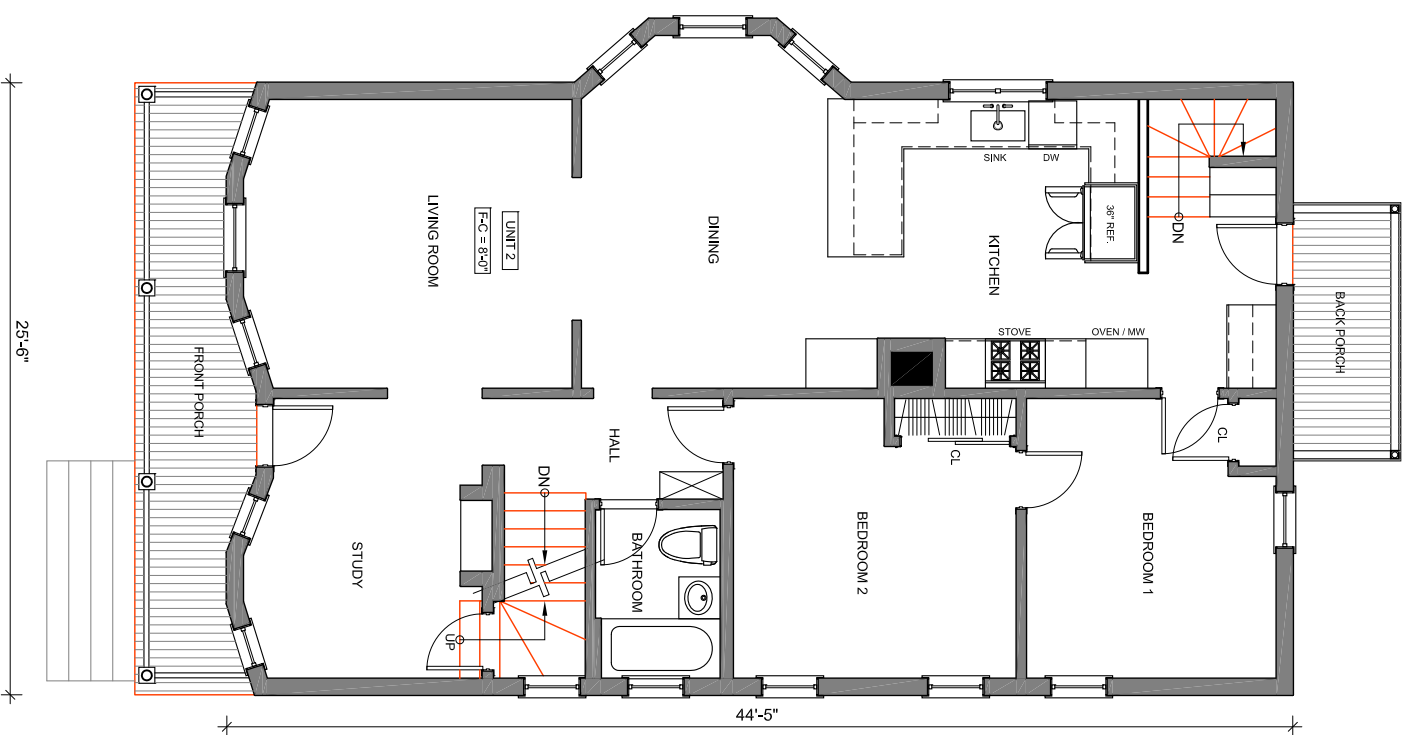
N

A PROPOSAL FOR 30-32 WHITMAN STREET
30-32 WHITMAN ST., SOMERVILLE, MA 02144

DOUGLAS OKUN & ASSOCIATES

DATE: 07-19-2019
SCALE: 1/8" = 1'-0"

A3- PROPOSED SECOND FLOOR PLAN





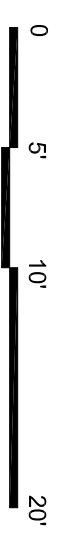
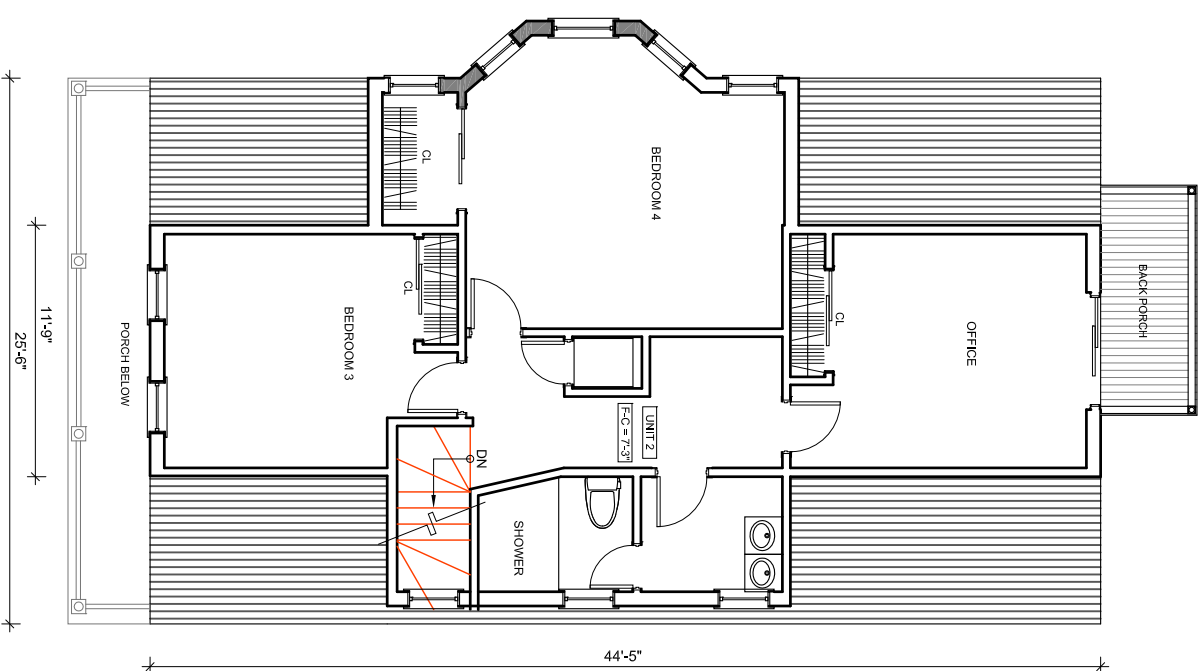
N

A PROPOSAL FOR 30-32 WHITMAN STREET
30-32 WHITMAN ST., SOMERVILLE, MA 02144

DOUGLAS OKUN & ASSOCIATES

DATE: 07-19-2019
SCALE: 1/8" = 1'-0"

A4- PROPOSED THIRD FLOOR PLAN





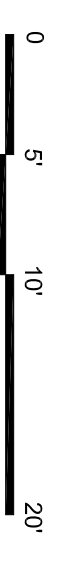
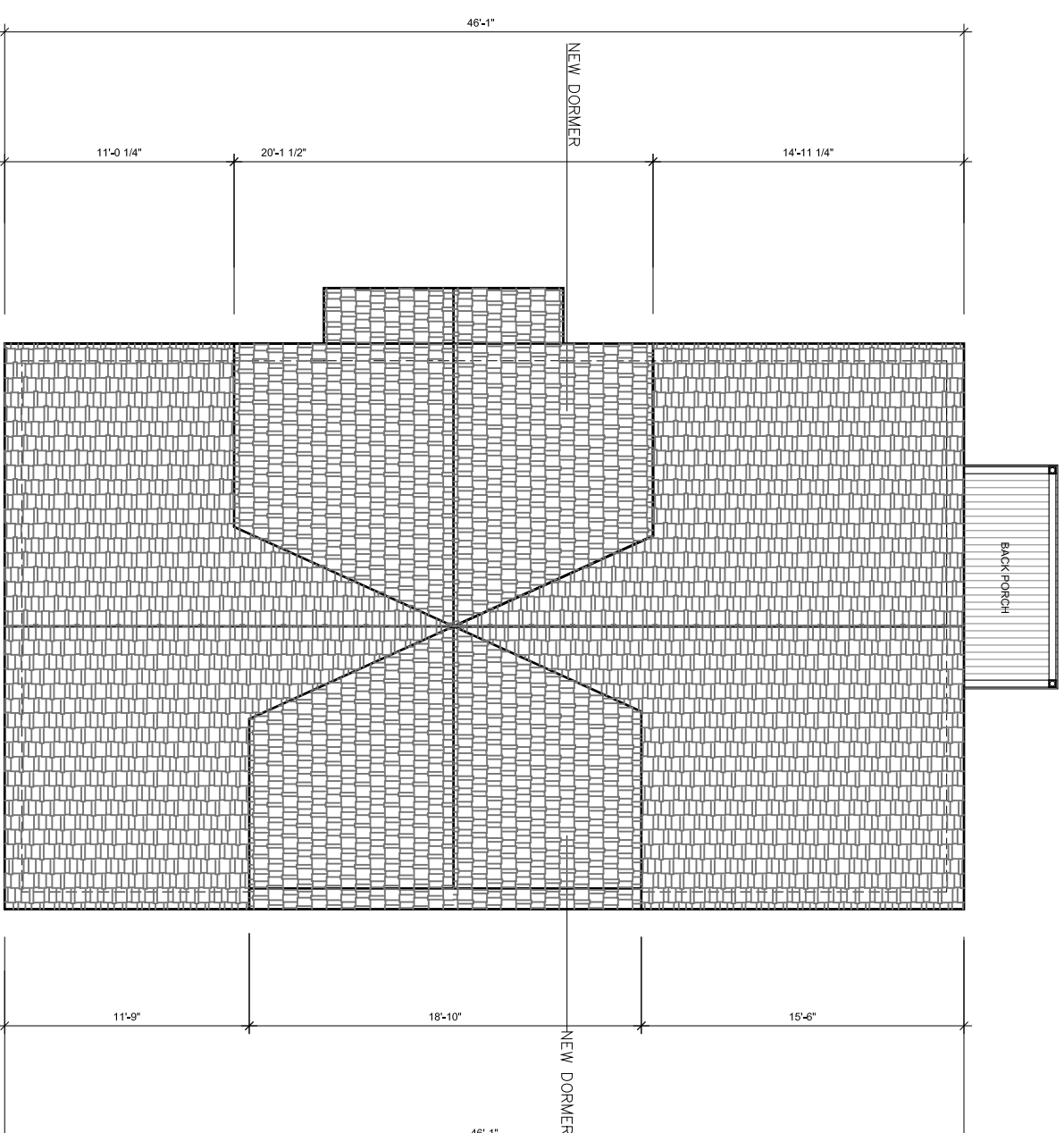
A PROPOSAL FOR 30-32 WHITMAN STREET
30-32 WHITMAN ST., SOMERVILLE, MA 02144

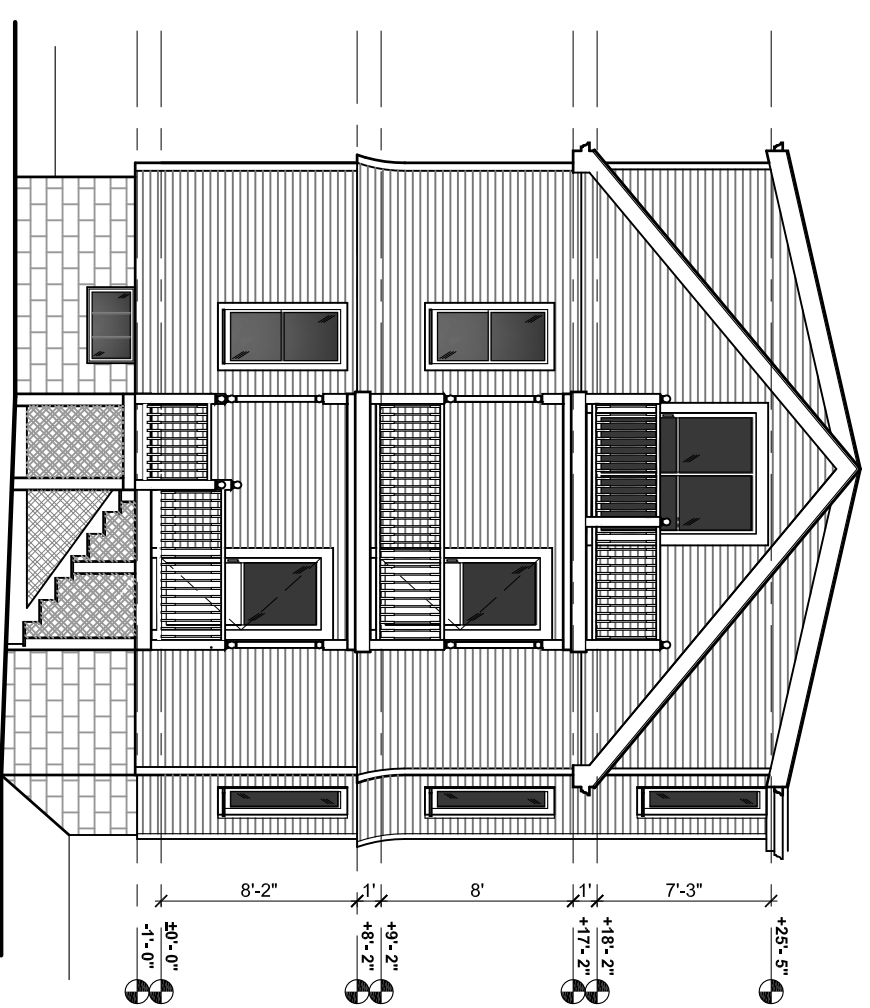
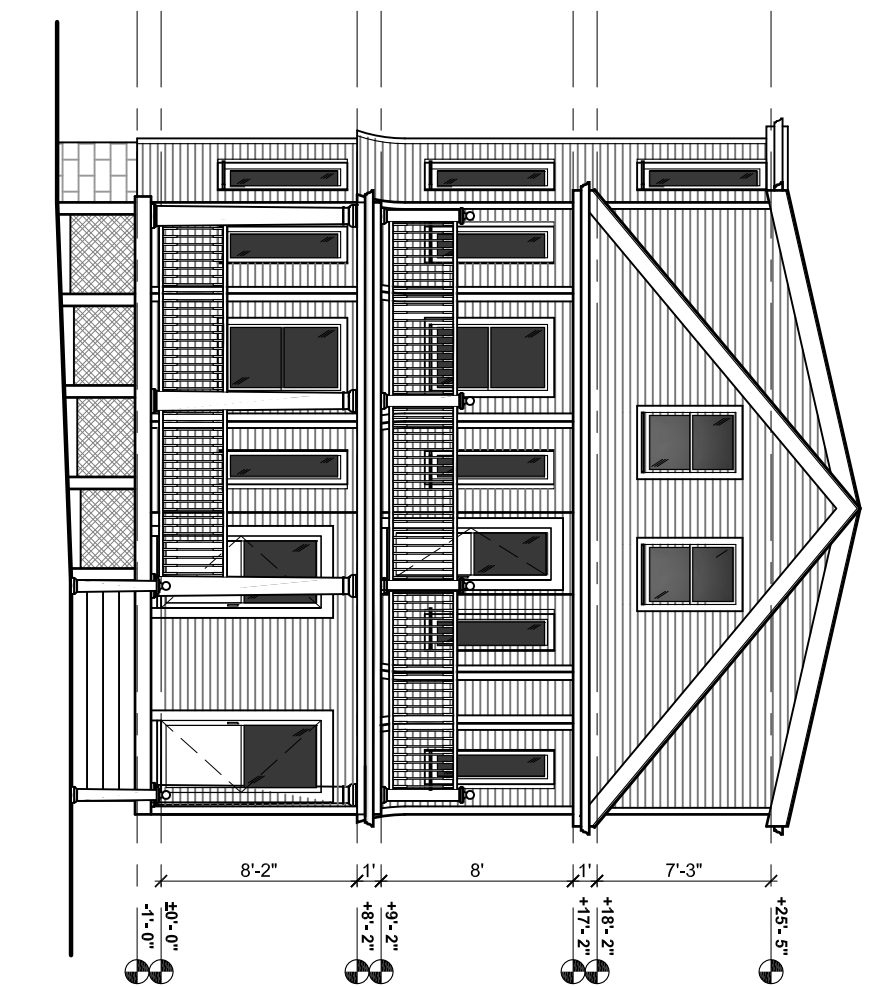
DOUGLAS OKUN & ASSOCIATES

DATE: 07-19-2019
SCALE: 1/8" = 1'-0"

A5- PROPOSED ROOF PLAN

156 Mount Auburn Street, Cambridge, MA 02138 /
(617) 491-4600 / doug@doassoc.com / www.dougotkun.com





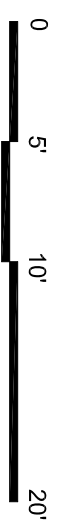
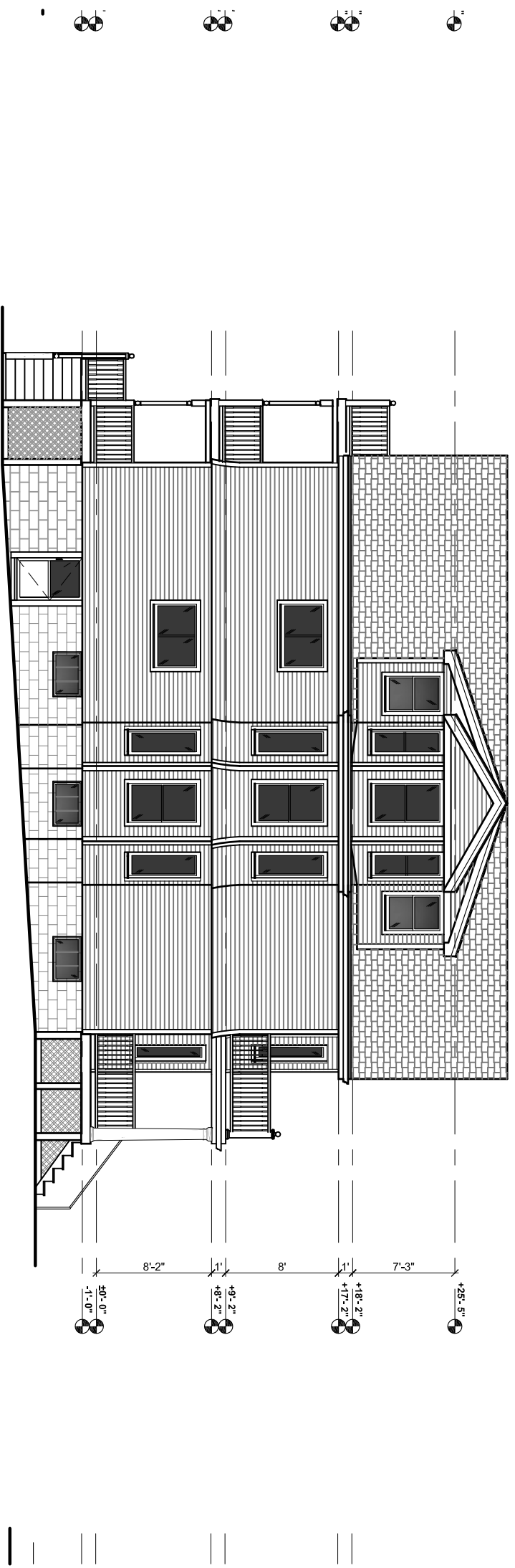
A PROPOSAL FOR 30-32 WHITMAN STREET
30-32 WHITMAN ST., SOMERVILLE, MA 02144

DATE: 06-12-2019
SCALE: 1/8"=1'-0"

A6- PROPOSED FRONT AND BACK ELEVATIONS

DOUGLAS OKUN & ASSOCIATES

156 Mount Auburn Street, Cambridge, MA 02138 /
(617) 491-4600 / doug@doassoc.com / www.dougotkun.com



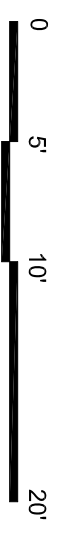
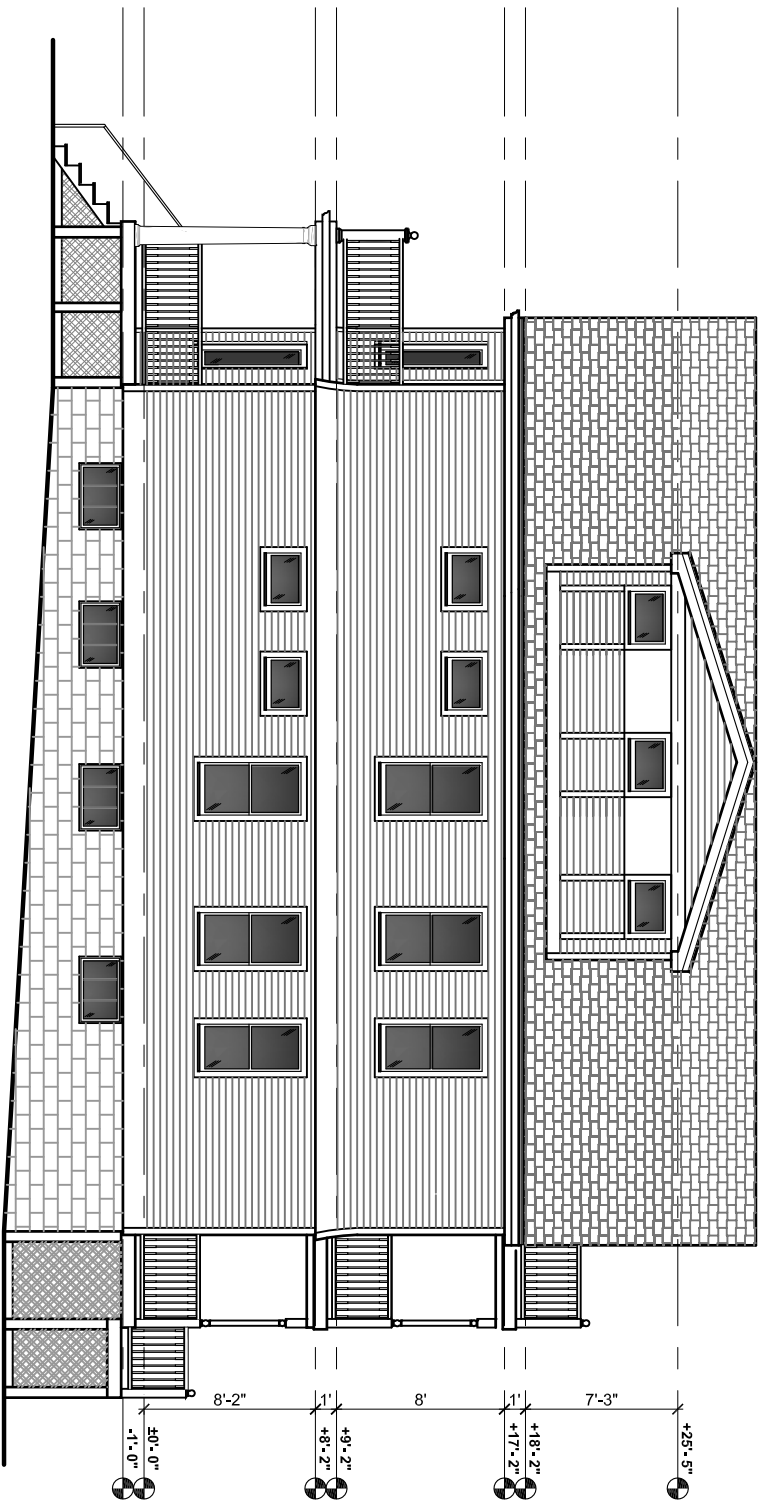
A PROPOSAL FOR 30-32 WHITMAN STREET
30-32 WHITMAN ST., SOMERVILLE, MA 02144

DATE: 07-19-2019
SCALE: 1/8"=1'-0"

A7- PROPOSED EAST ELEVATION

DOUGLAS OKUN & ASSOCIATES

156 Mount Auburn Street, Cambridge, MA 02138 /
(617) 491-4600 / doug@doassoc.com / www.dougokun.com



A PROPOSAL FOR 30-32 WHITMAN STREET
30-32 WHITMAN ST., SOMERVILLE, MA 02144

DATE: 07-19-2019
SCALE: 1/8"=1'-0"

A8- PROPOSED WEST ELEVATION

DOUGLAS OKUN & ASSOCIATES

156 Mount Auburn Street, Cambridge, MA 02138 /
(617) 491-4600 / doug@doassoc.com / www.dougotkun.com