

Central Hill Campus Parking Update

Brad Rawson, Director of Mobility, City of Somerville

Justin Schreiber, Transportation Planner, City of Somerville

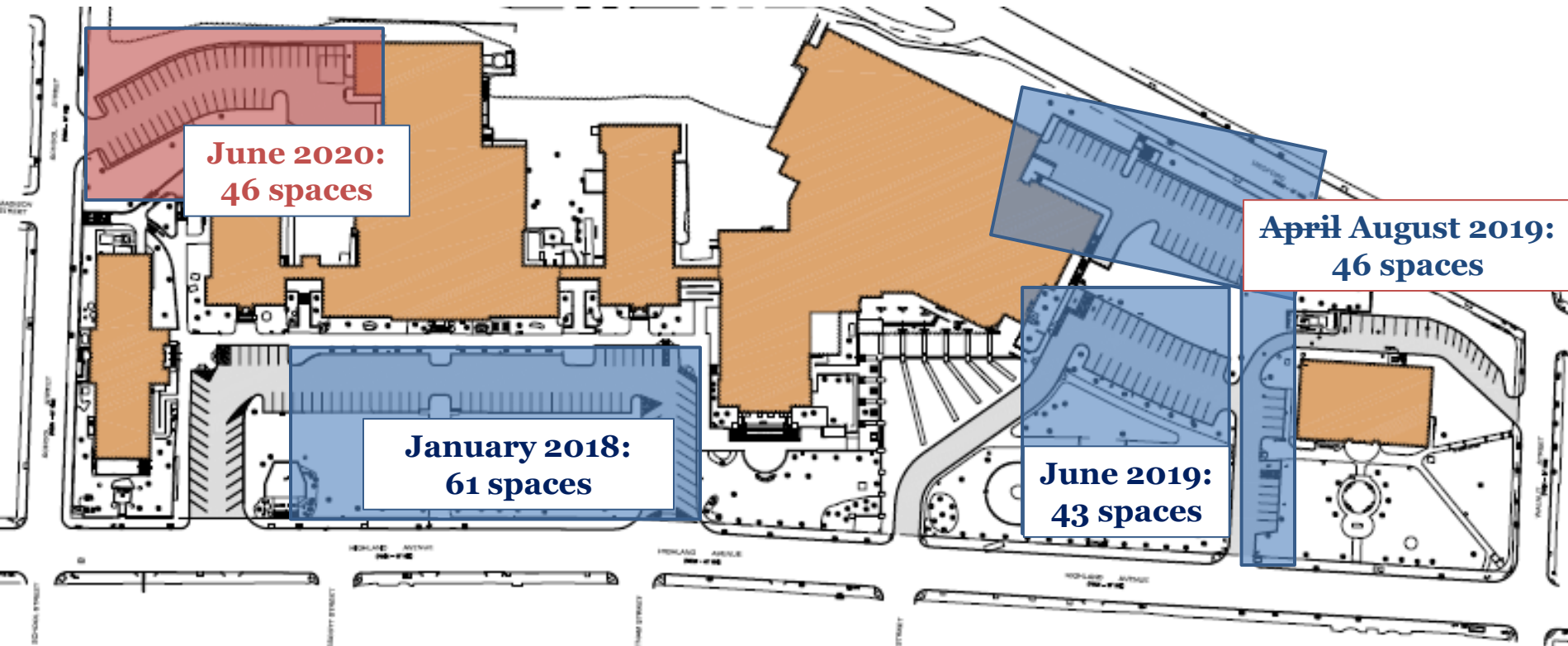
Elizabeth Flanagan, Transportation Planner, Howard Stein Hudson

Tonight's Agenda

1. Project timeline & post construction condition
2. Parking Study Results
3. RFP Results for off-site, off-street parking spaces
4. Potential license agreements for off-site, off street parking spaces
5. New parking options
6. New mobility options
7. Next Steps

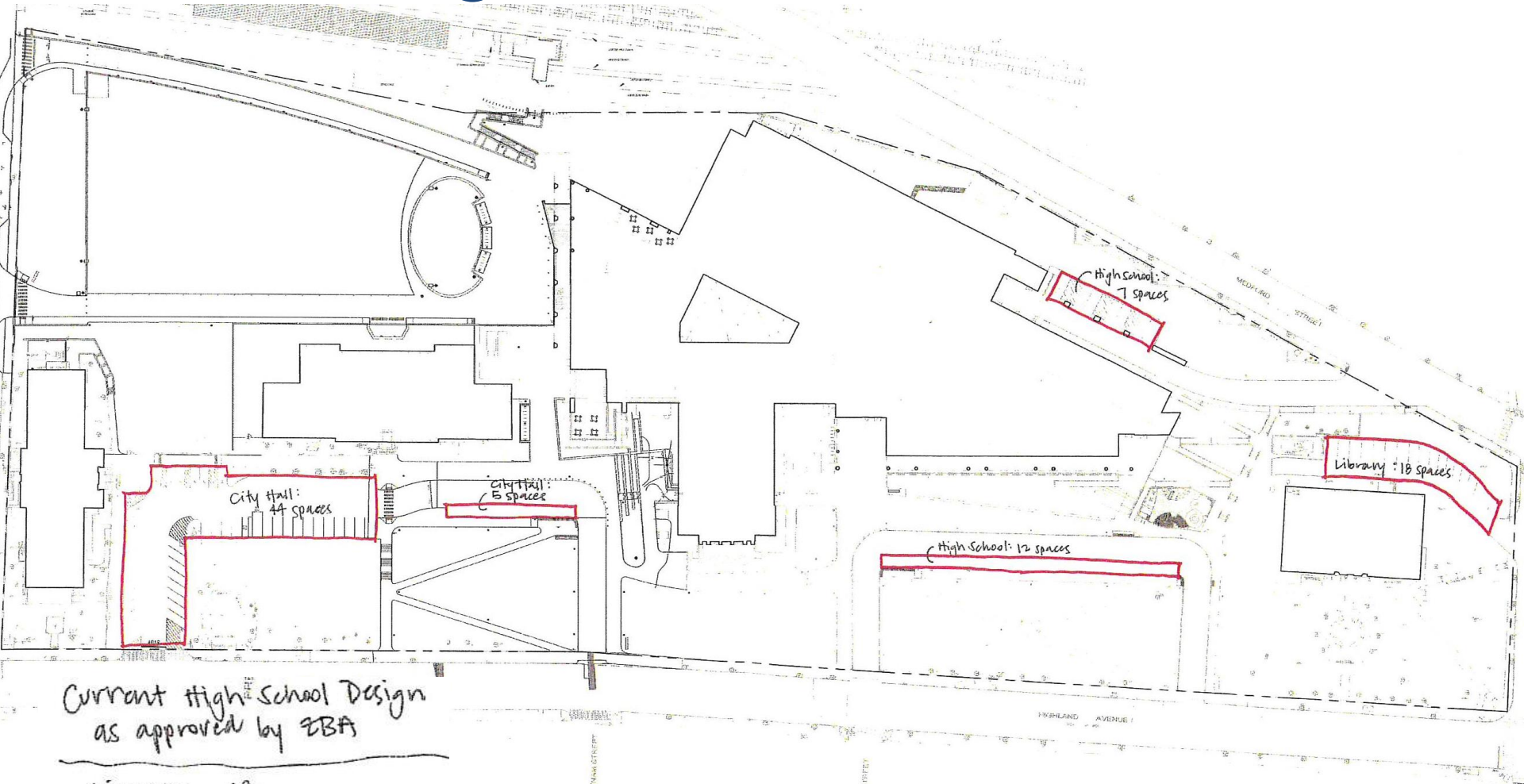


The Project Timeline



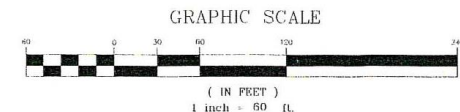
- December 2017: City Hall staff given permits to park on-street

Post SHS High School Construction



Current High School Design
as approved by ZBA

| | |
|-------------|----|
| Library | 18 |
| High School | 19 |
| City Hall | 44 |
| <hr/> | |
| Total | 86 |



Conceptual Central Hill Campus Plan

Preferred Campus Plan



Parking Study

- Initial parking study in Spring 2017 by Nelson\Nygaard
 - Street sweeping only constrained condition studied
- In response to concerns about other constrained conditions, a second generation parking study was conducted by Howard Stein Hudson.
 - Additional study for:
 - Morning turnover
 - Street Sweeping Day
 - Snow Impacts
 - Phased parking reduction during construction

Parking Study

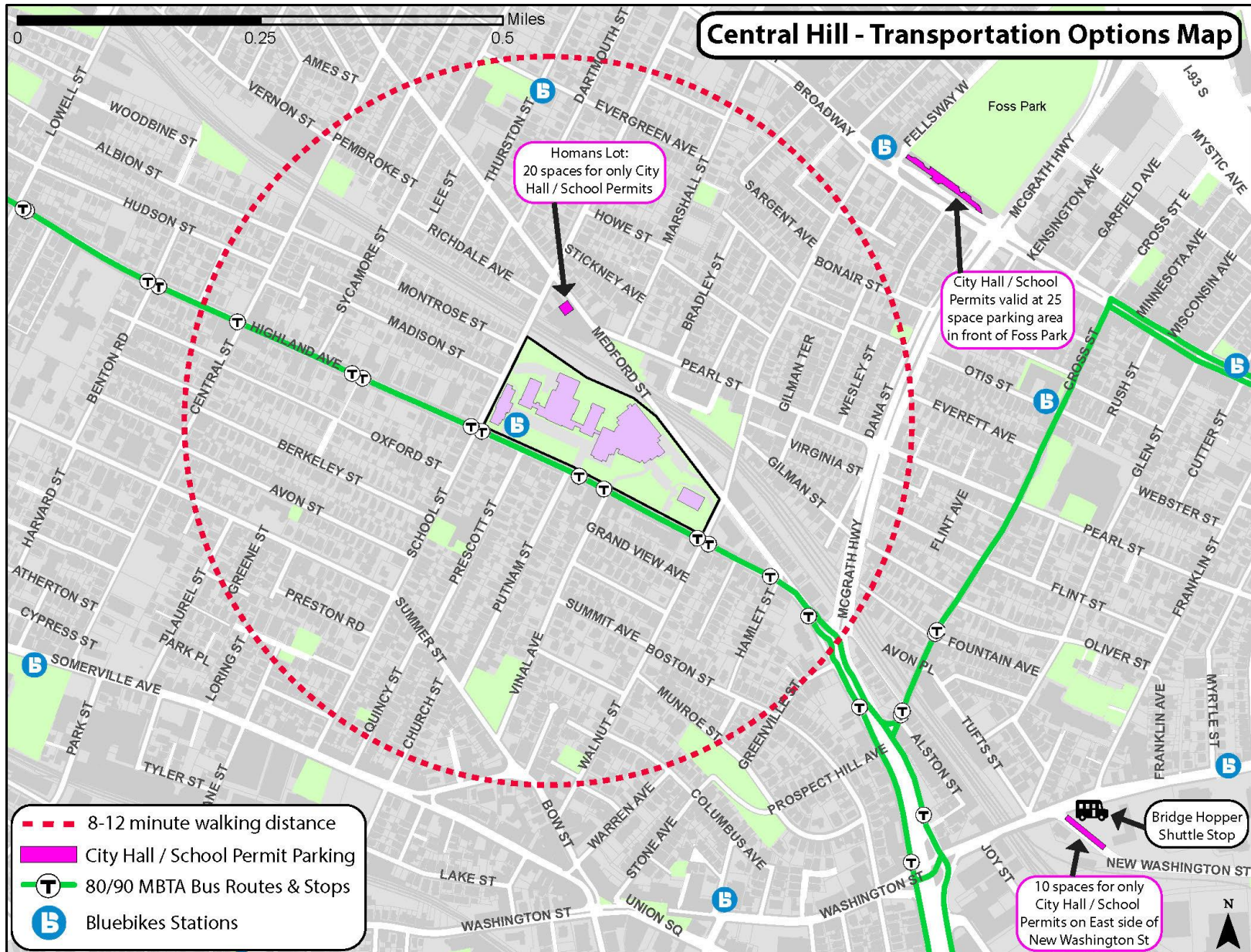
RFP Results for Leasing off-site parking

- 4/24 City Released a RFP for lease of off-street, off-site parking within 3 miles of campus
 - 5/29 due date later extended to 6/12.
- Only two responses received from a single entity
 - 25 spots for \$100,000 per year for daytime only use
 - Well above market price – and far more expensive than envisioned
 - Proposals were rejected
- Actively pursuing license agreements as an alternative
 - Procurement differs from lease agreement
 - Increased ability to negotiate terms
 - **Challenge** –sites close to Central Hill extremely limited

New Parking Options During Construction

- Homan's Lot
 - 20 spaces signed for City Hall / School permits only
 - Getting to Central Hill:
 - 5 min walk
- Parking area in front of Foss Park on Broadway
 - 25 spaces, City Hall / School permits valid (not reserved)
 - Getting to Central Hill:
 - 15 min walk
 - 8 min bike via on-site Bluebike station
 - Ride hailing
- 90 Washington St lot replaced by on-street spaces on adjacent New Washington St
 - 10 spaces to matches demand observed in lot last spring
 - Getting to Central Hill:
 - 18 min walk
 - BridgeHopper shuttle
 - Ride hailing
 - #90 Bus

Outreach



Parking Regulations on Highland Ave. near Central Hill Campus

- **Goal:** Discourage contractor parking
 - Project agreement requires contractors to park off site at I-93 and shuttle workers
- **Goal:** Provide accessible access to the Library
- **Previous** regulations:
 - 8am to 2:30am: 2-hour parking except by permit / 2:30am to 8am: permit parking only
 - **Enforcement: ticketing only**
 - **2 accessible parking spaces in lot off of Medford St (now removed)**
- **New** regulations now in place:
 - 8am to 2:30am: 2-hour parking except by permit / 2:30am to 8am: permit parking only
 - **Enforcement: ticketing and towing**
 - **2 accessible parking spaces on Highland Ave at Walnut St in front of Library**
- **Enforcement Process:**
 1. Call 311 to report unlawfully parked vehicles
 2. Parking Control Officer issues ticket and calls SPD for tow
 3. SPD officer must see vehicle in person and then can call in tow
 4. Tow enforcement will begin in earnest when school begins.

New Mobility Options

- Bluebikes bike share program
 - Only 11 School/City employees currently participate in \$60/year membership for unlimited 45 min trips
 - Exploring possibility of **reducing cost of memberships**
 - Exploring possibility of **adding docks/bikes to Central Hill**
 - **Stations currently installed at many municipal/school buildings**
- MBTA #90 Bus (Davis to Lechmere along Highland Ave)
 - Increased frequency starting 9/1 via Better Bus project
- Central Broadway Bicycle & Bus Lanes (89 & 101 bus)
 - More info: somervillema.gov/WinterHillMotion

Neighborhoods for Walking & Biking



Somerville Neighborway



City Hall / SHS

➔

| | |
|--|--------|
| | 12 min |
| | 5 min |

ESCS

Capuano

Additional Mobility Management strategies we are exploring

- Municipal/School ZipCar account and vehicles
- Emergency Ride Home Program
- Partial subsidy/Reimbursement for parking/ride-hailing expenses on most difficult parking days each month

Next steps

- Continue to pursue license agreements for additional off-site, off-street parking
- Monitor usage of Homan's and on-street parking areas
- Advance implementation of Mobility Management strategies
- Explore adjustments to street sweeping schedule – temporary for events and/or long term changes
- Staff Survey of actual trips taken

Discussion

Background, documents, presentations and comment form:
<https://sommervillema.gov/shsparking>