

ARTHUR D. HEALEY SCHOOL

SCHOOLYARD RENOVATION COMMUNITY MEETING #3

OCTOBER 10TH, 2019



Project Healey Schoolyard Renovation
Date 10/10/2019
Location Arthur D. Healey School - Healey School Cafeteria
Purpose Community Meeting #3

Next Meeting: Late Fall, 2019

Date TBD

Notes:

Warner Larson Landscape Architects (WL) presented the community survey results, from an online survey open from August-early October and had 133 respondents. Using the survey as a guide, WL designed and presented a site plan with enlargements of the (1.) U-12 soccer field and ramp, (2.) tot-lot, (3.) turn around/crossing at school entrance, and (4.) schoolyard options, including two designs for the schoolyard area ("Hawk Hub" and "Mountain Meander") and three options for play equipment. Each play equipment style could be inserted within the schoolyard designs. Community members placed dots on the preferred schoolyard design and the first and second choice play equipment boards. The schoolyard designs had similar vote counts with a slight preference for the Mountain Meander. The play equipment had split votes between the tower and net structure and tower platform and accessible bridge structure. During a discussion following the voting process, parents and teachers brought up the consideration for sight lines/visibility into structures and ease of accessing the structures for parents/teachers.

Hawk Hub: Large, flat open space in play area, surrounded by large, sloped loop-shaped walkway. Looping walkway provides accessible route up to and down from lookout area, which is approximately 6'-7' above existing grade. Play tower is located on elevated, open flat area and connect to shorter structures via bridge elements. The elevated area connects back to grade either through a sloped poured in place (PIP) rubber mound or rock climbing wall. Other play elements include two basket swings.

Mountain Meander: Meandering sloped walkway with nodes of smaller play along exploration path. High point is approximately 9'-10' above existing grade which is created by a longer accessible route that terminates at the high point. Bridge element from the high point connects to a platform/tower, which is also raised approximately 4' above current grade. Smaller play elements include a swing, climbers/steppers, spinner, and a horizontal climbing wall.

Play Equipment Options:

- 1.) Net climber and crow's nest lookout with net bridge connections
- 2.) Tower and net bridge connection
- 3.) Platform tower with fully accessible bridge connection

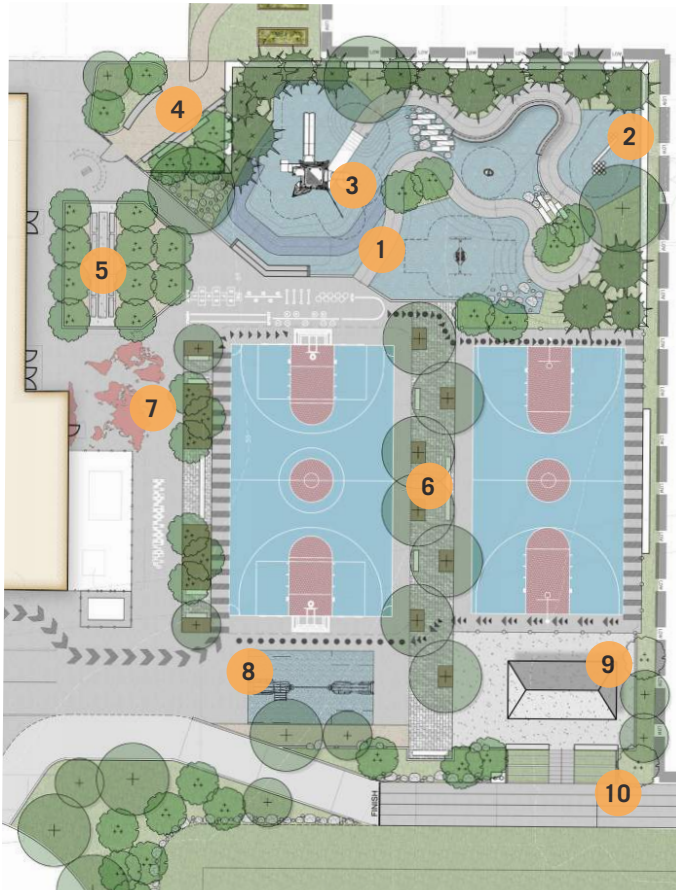


Hawk Hub



1. ACCESSIBLE LOOPING SLOPED WALKWAY
- BOULDER SCRAMBLE ALONG SOME SLOPES
2. CLIMBING STRUCTURE WITH BRIDGE CONNECTOR
3. OVERLOOK AND CLIMBING WALL
4. MULTI-USE SHELTER (STAGE, OUTDOOR LEARNING, PICNIC GROVE)
5. SLOPED ASPHALT SEATING
6. MURAL WALL WITH SLOPED TURF SEATING (SPECTATOR)
7. SHADED TERRACED SEATING
8. SHELTER AND STEPPED SEATING
9. SPECTATOR SLOPE SEATING
10. ADULT FITNESS ZONE
11. PAINTED GRAPHICS/GAMES

Mountain Meander



1. WINDING PATHWAY CREATES NODES OF PLAY SPACES ALONG ACCESSIBLE ROUTE
2. NATURE PLAY FEATURES
 - BOULDER SCRAMBLES
 - STEPPERS/BALANCE BEAM
 - POCKETS OF PLANTING
3. OVERLOOK AND BRIDGE TO PLAY
4. OUTDOOR CLASSROOM EXTENSION
5. SHADED PICNIC GROVE
6. PERMEABLE PAVING ZONE BETWEEN COURTS
7. PAINTED GRAPHICS/GAMES
8. ADULT FITNESS ZONE
9. SHELTER
10. SPECTATOR SEATING

General Comments:

- Use structure from Hawk Hub in Mountain Meander, prefer shade structure closer to school
- Like permeable pavers between courts and less open asphalt in general
- During recess, kids like places to sit after playing sports - more seating in plans
- Possible to fit two basket swings into Mountain Meander? One swing isn't enough because kids always fight over swings
- Issues with parents getting kids off play equipment - parents (and teachers) need to be able to get kids off structures easily
- Liked composite as material for play structure
- Love tall towers like Lincoln Park and Winter Hill, taller towers help teach kids to overcome fear of heights but it doesn't always offer inclusive options
- Platform tower and accessible bridge offers immediate access for any ability
- Concern of smaller/younger kids with rope/net structures
- Concern of kids who won't be able to keep up with/play with classmates if tower structure isn't easily accessible
- Charlestown playground (Thomas M. Menino Park) offers good example of inclusive playground with ramp and play structure for kids who can't climb up net structures

Follow Up:

Community meeting to be scheduled for late fall to show preferred site plan

