



Ward 4 City Councilor Jesse Clingan, the Somerville Department of Public Space and Urban Forestry, and the Somerville School Department invite you to the second

Healey Schoolyard Design Community Meeting Thursday, October 10, 6:30 – 8 p.m.

Please join us as we discuss the new schoolyard layout and features.

**Where: Mystic Activity Center, 503 Mystic Ave.
(Just down the stairs from the schoolyard)**

Take our survey, see the plans, and sign up for future project updates at www.somervillema.gov/healeyschoolyard. For more info contact Arn Franzen: AFranzen@somervillema.gov.



ARTHUR D. HEALEY SCHOOL

SCHOOLYARD RENOVATION COMMUNITY MEETING #3

OCTOBER 10TH, 2019



PRESENTATION OVERVIEW

1. TIMELINE

2. RECAP OF MEETING #2

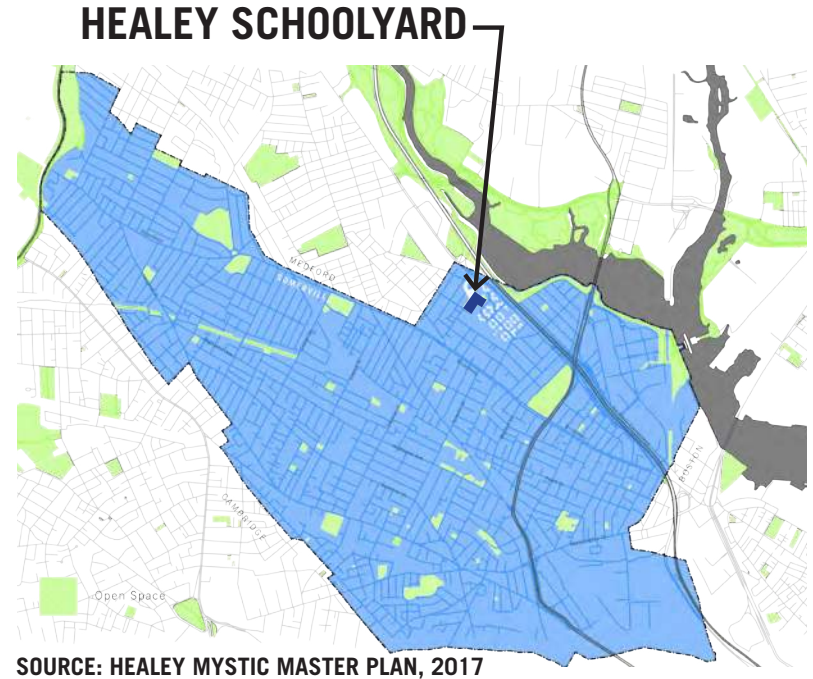
3. SURVEY RESULTS - 10 MINS

5. DESIGN - 40 MINS

- OVERALL SITE PLAN
- SCHOOLYARD DESIGN OPTIONS
- INSPIRATION/PRECEDENTS
- PLAY ELEMENTS

6. VOTING/FEEDBACK - 15 MINS

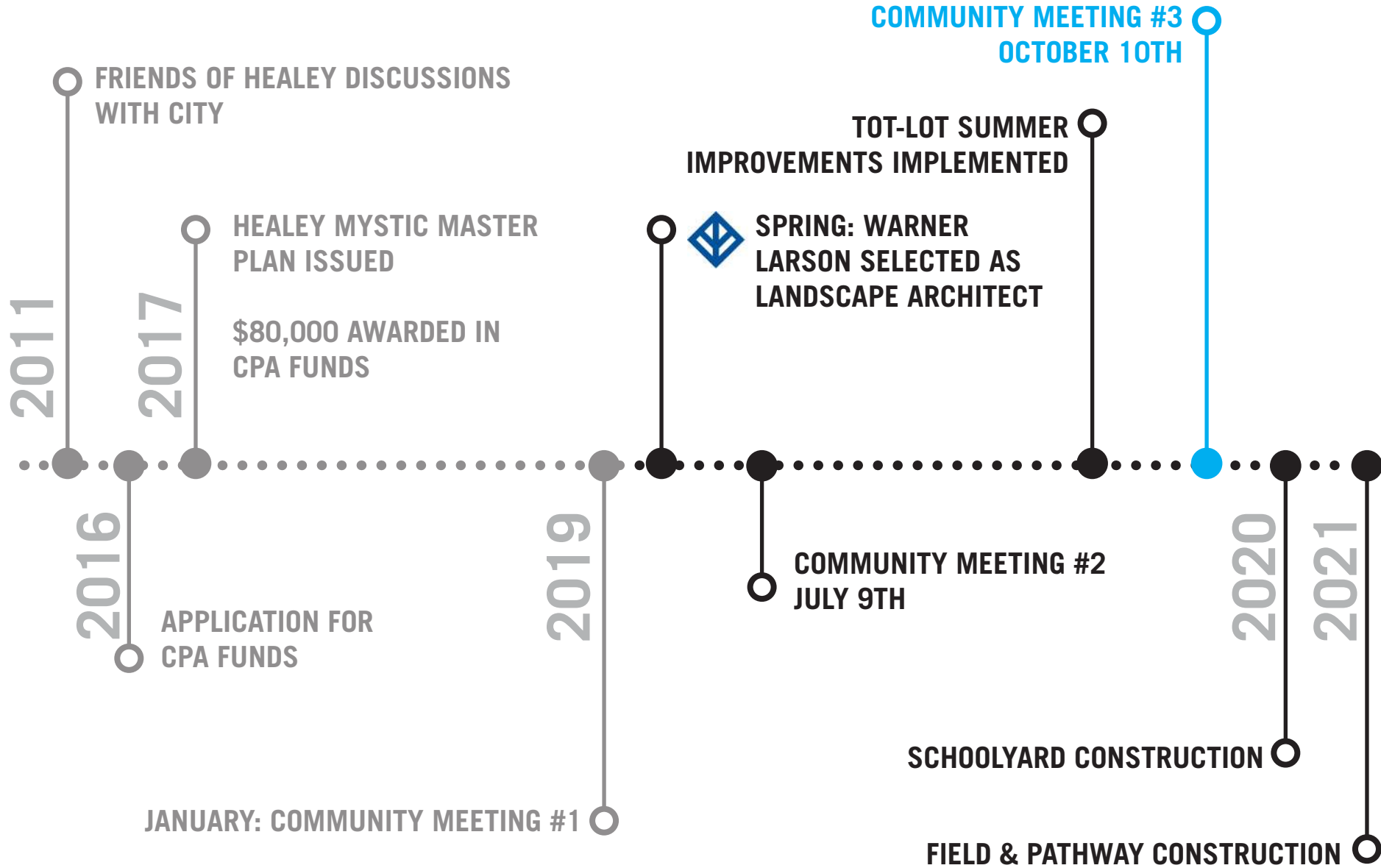
7. RECAP/RESULTS - 15 MINS



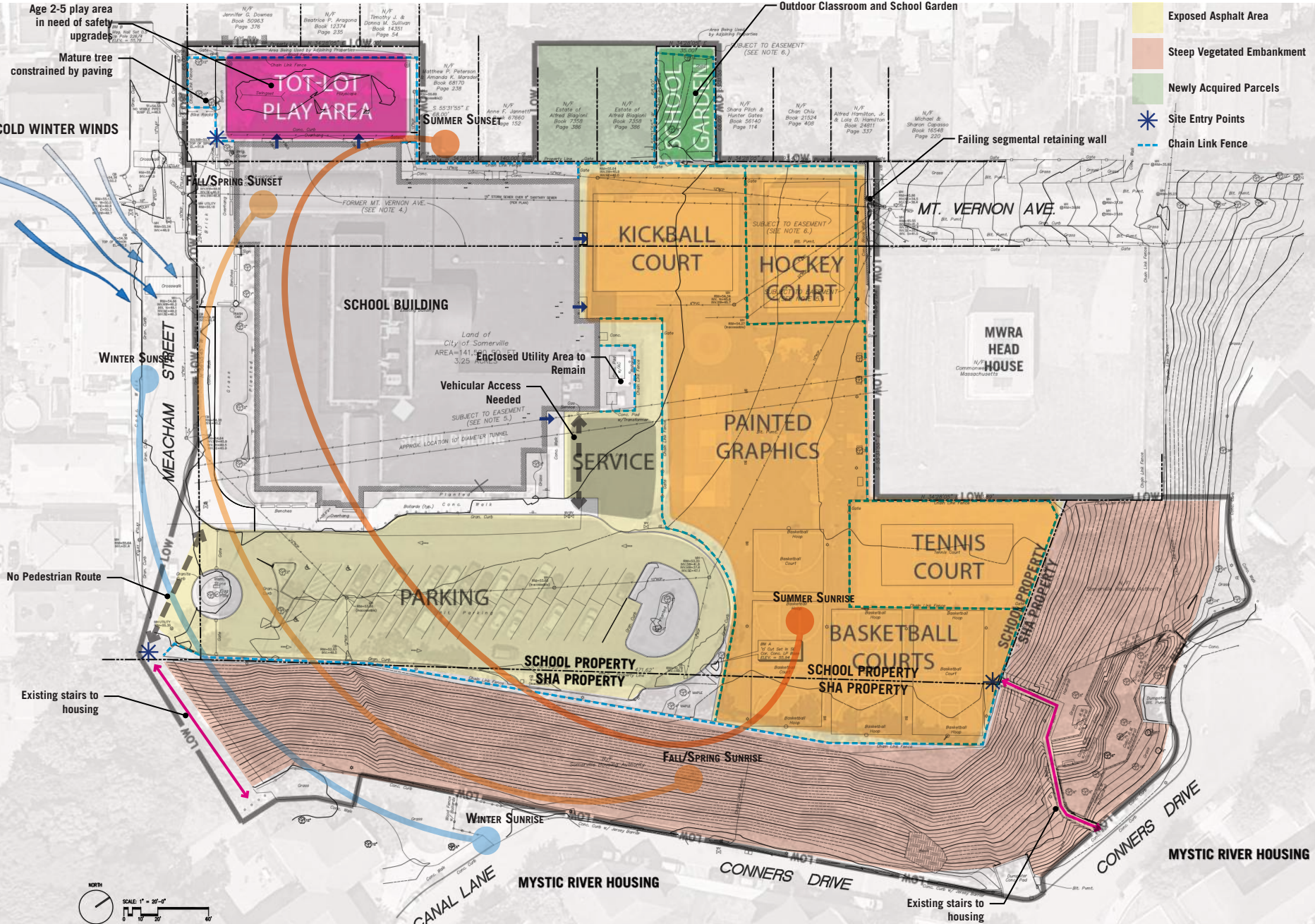
SOURCE: HEALEY MYSTIC MASTER PLAN, 2017



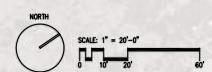
TIMELINE



SITE ANALYSIS

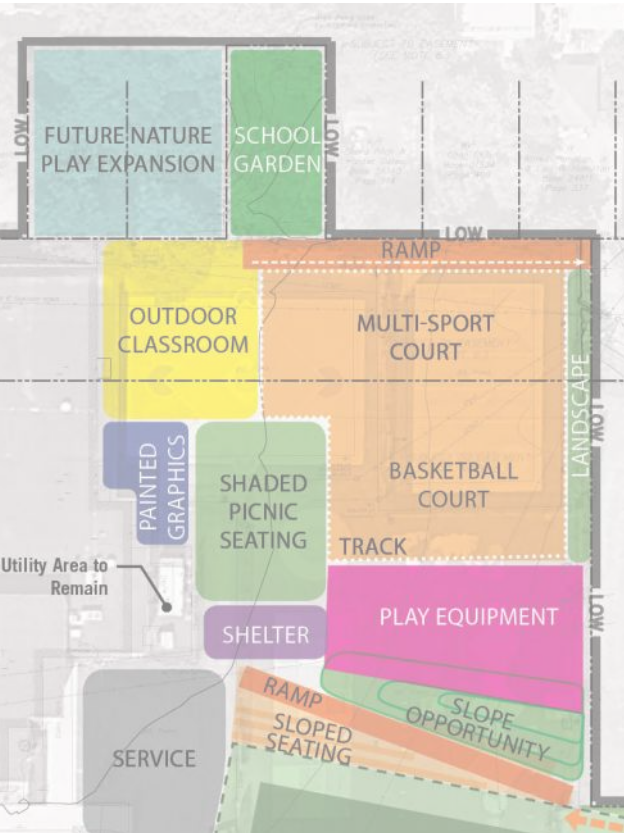


- Exposed Asphalt Area
- Steep Vegetated Embankment
- Newly Acquired Parcels
- Site Entry Points
- Chain Link Fence

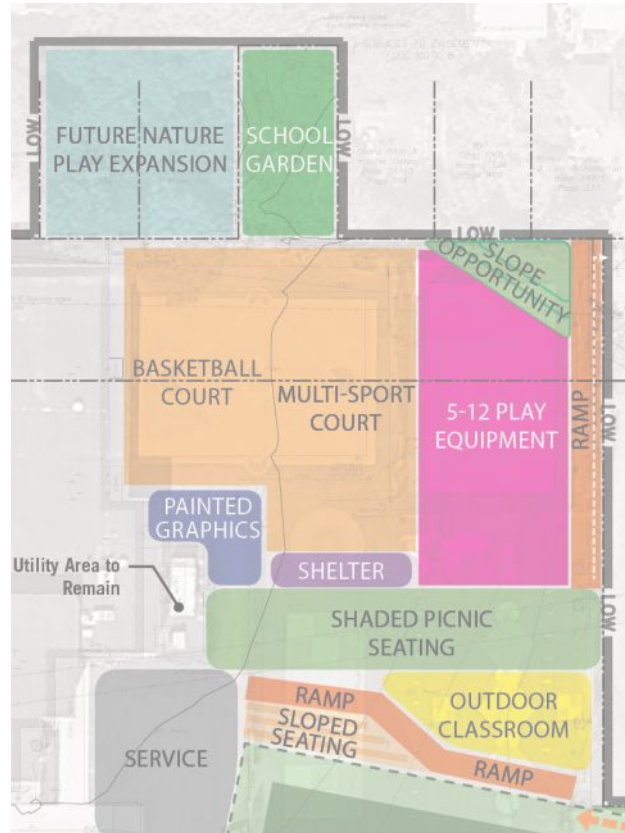


RECAP - MEETING 2 DESIGN OPTIONS

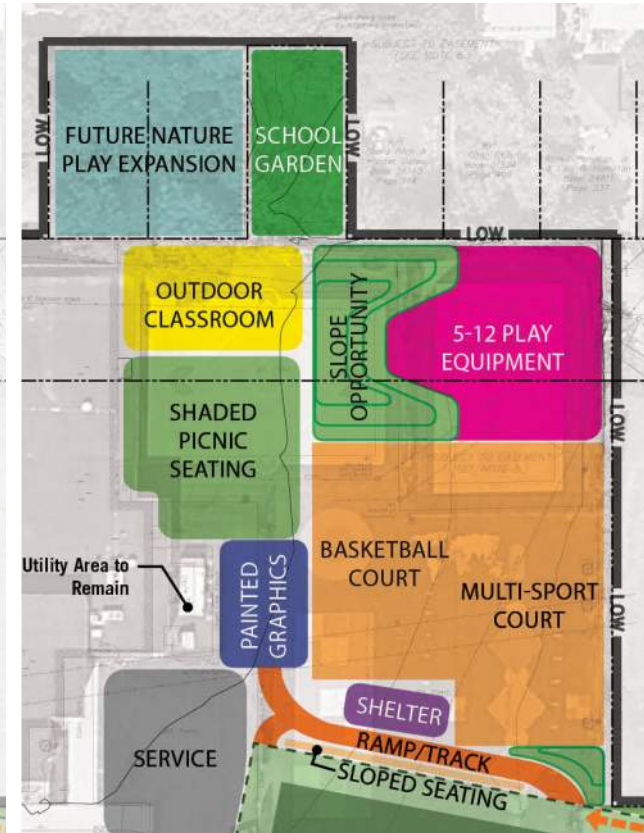
OPTION C - PREFERRED (VOTING)



ALTERNATIVE A



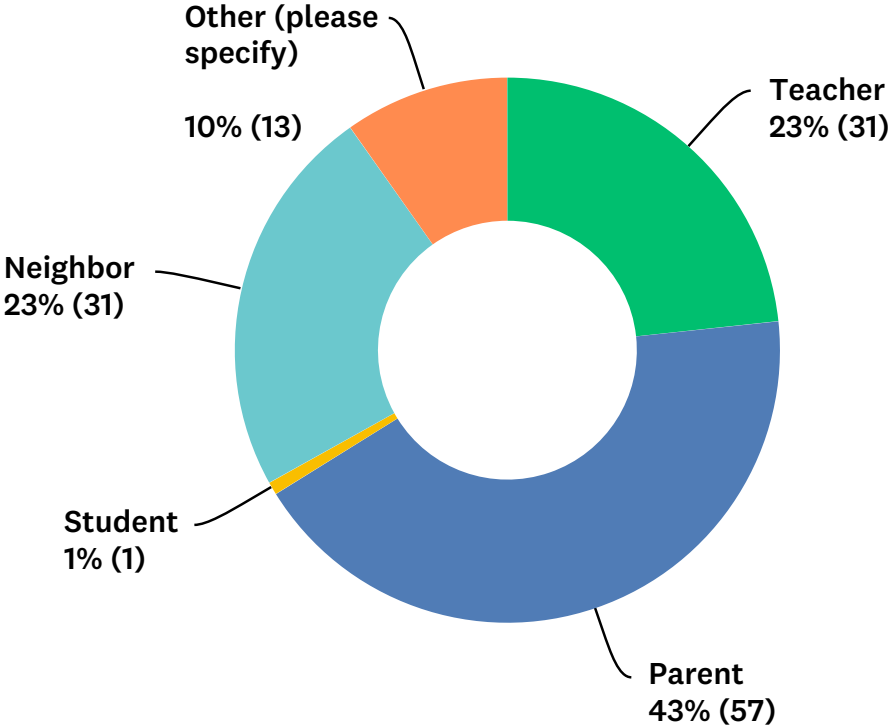
ALTERNATIVE B



ALTERNATIVE C

SURVEY RESULTS

133 TOTAL RESPONSES !!

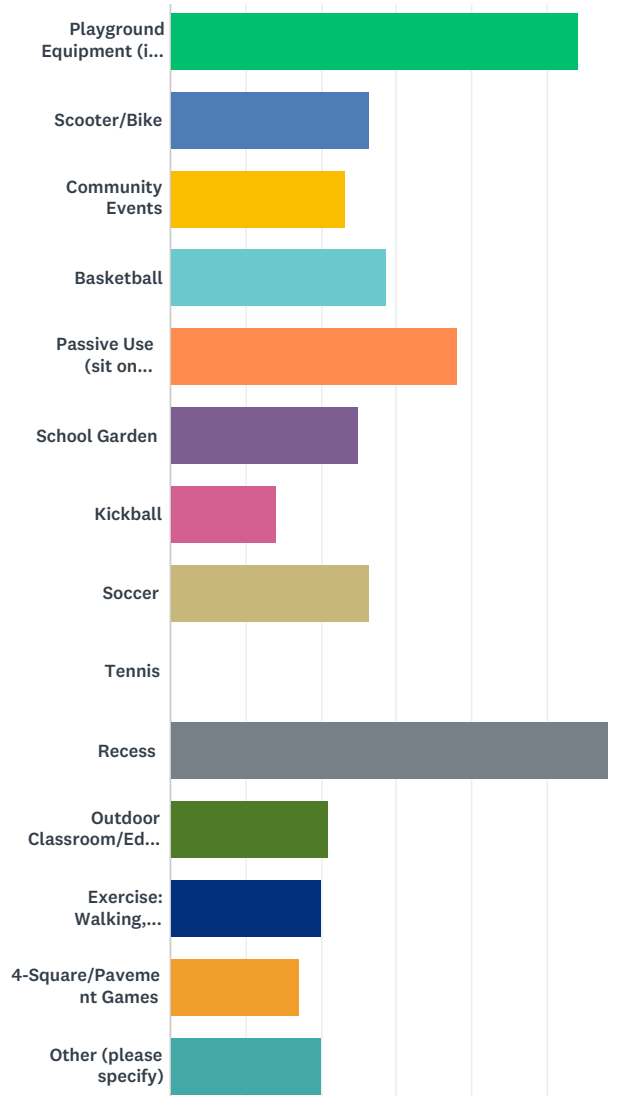


GREEN
ACTIVIST
SOMERVILLE RESIDENT
NEIGHBOR AND FORMER PARENT
YOUTH WORKER
FAMILY AND COMMUNITY LIAISON
VISITOR FROM ARLINGTON
PARKOUR COACH
GARDEN VOLUNTEER
PARENT AND TEACHER
PARENT AND NEIGHBOR

WE ALSO HEARD...

SURVEY RESULTS

HOW DO YOU (OR YOUR CHILD/STUDENT) CURRENTLY USE THE EXISTING SCHOOLYARD SPACES?

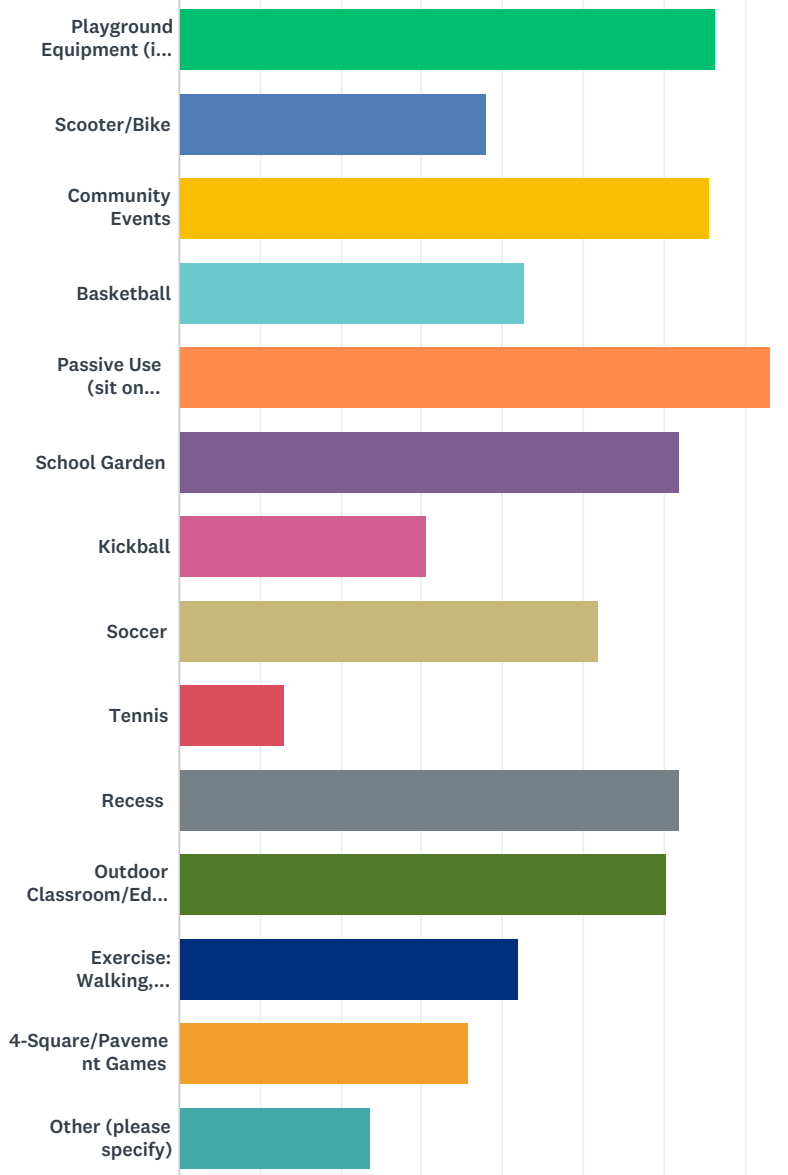


TOP 5 CURRENT USES:

1. RECESS
2. PLAYGROUND EQUIPMENT (IN TOT-LOT)
3. PASSIVE USE
4. BASKETBALL
5. SCOOTER/BIKE

SURVEY RESULTS

IN THE FUTURE, HOW WOULD YOU (OR YOUR CHILD/STUDENT) LIKE TO USE THE SCHOOLYARD SPACES?

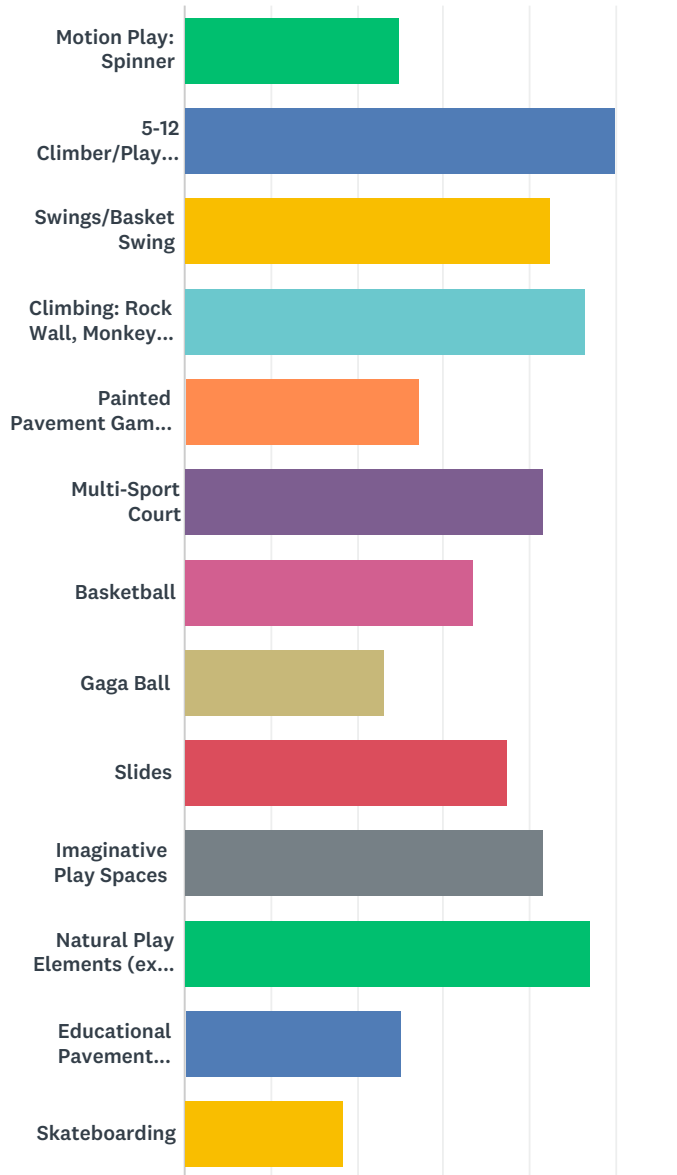


PLAY EQUIPMENT FOR OLDER KIDS
SOFTBALL
PARKOUR
FOOTBALL
JOGGING/
WALKING
TRACK
SKATEBOARDING/
ROLLERSKATING
MULTI-GENERATIONAL FIELD SPACE FOR BASEBALL
CALISTHENICS

WE ALSO HEARD...

SURVEY RESULTS

PLEASE RANK IN ORDER THE FOLLOWING PROPOSED
SCHOOLYARD PLAY ELEMENTS:

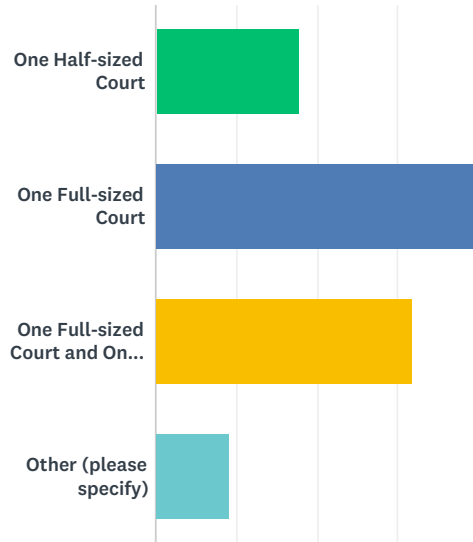


TOP 5 MOST DESIRED PLAY ELEMENTS:

- 1. 5-12 CLIMBER/PLAY STRUCTURE**
- 2. NATURE PLAY ELEMENTS**
- 3. CLIMBING: ROCK WALL, MONKEY BARS, LADDERS**
- 4. SWINGS/BASKET SWING**
- 5. IMAGINATIVE PLAY SPACES**

SURVEY RESULTS

IN ADDITION TO ONE MULTI-SPORT COURT, HOW MANY BASKETBALL COURTS DO YOU THINK THE SCHOOL NEEDS?



OTHER (PLEASE SPECIFY)

two full sized courts

Parkour

A lot of the kids hang out after school to play basketball!

2 full size courts

0

None

More play structure

2 full size courts

No opinion / depends on community needs! But it shouldn't take the place of a soccer field.

None - How many are already in the gym?

seem like enough as is

Don't know, don't care for basketball

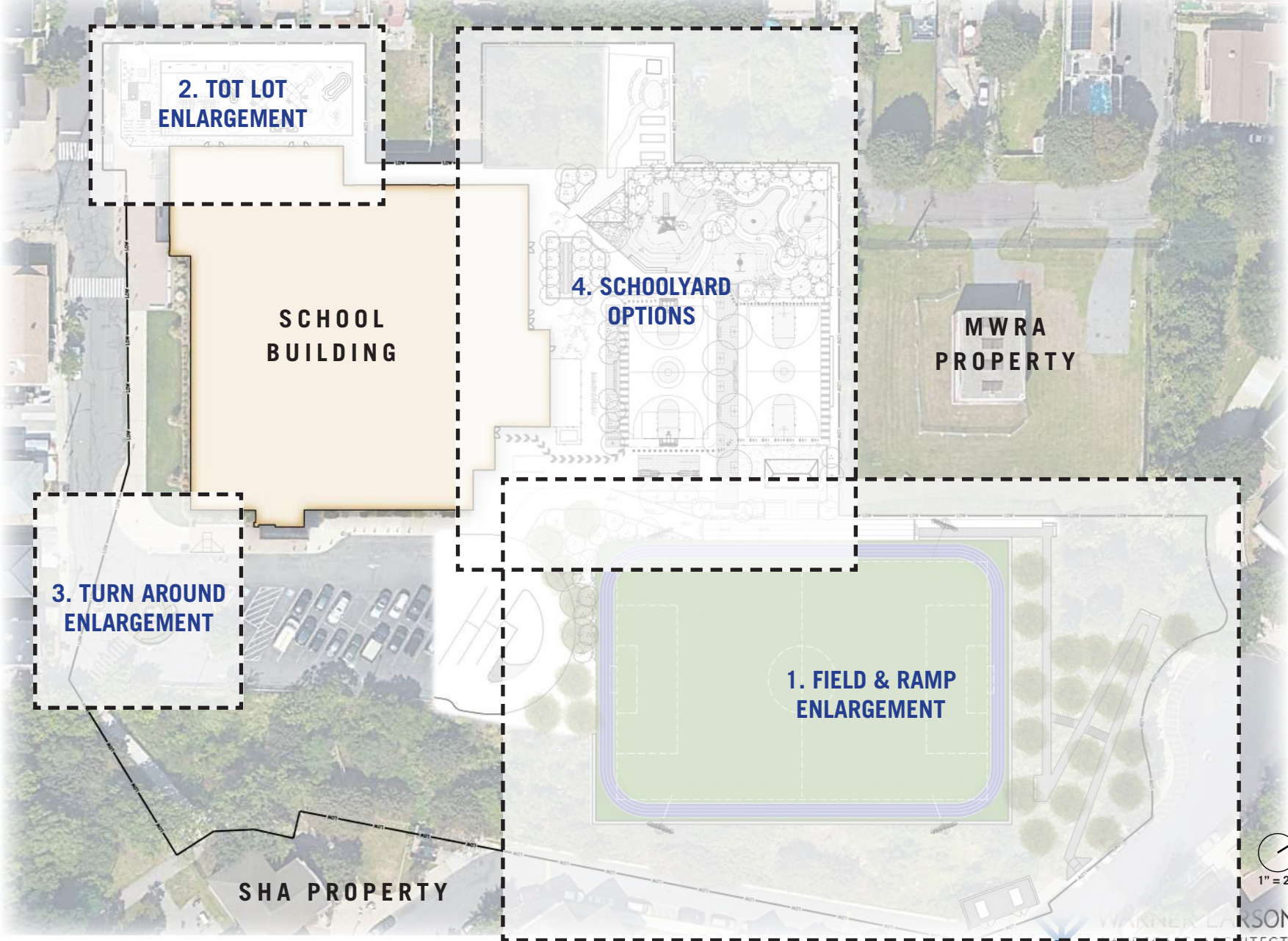
WE ALSO HEARD...

SURVEY RESULTS

WE ALSO HEARD...

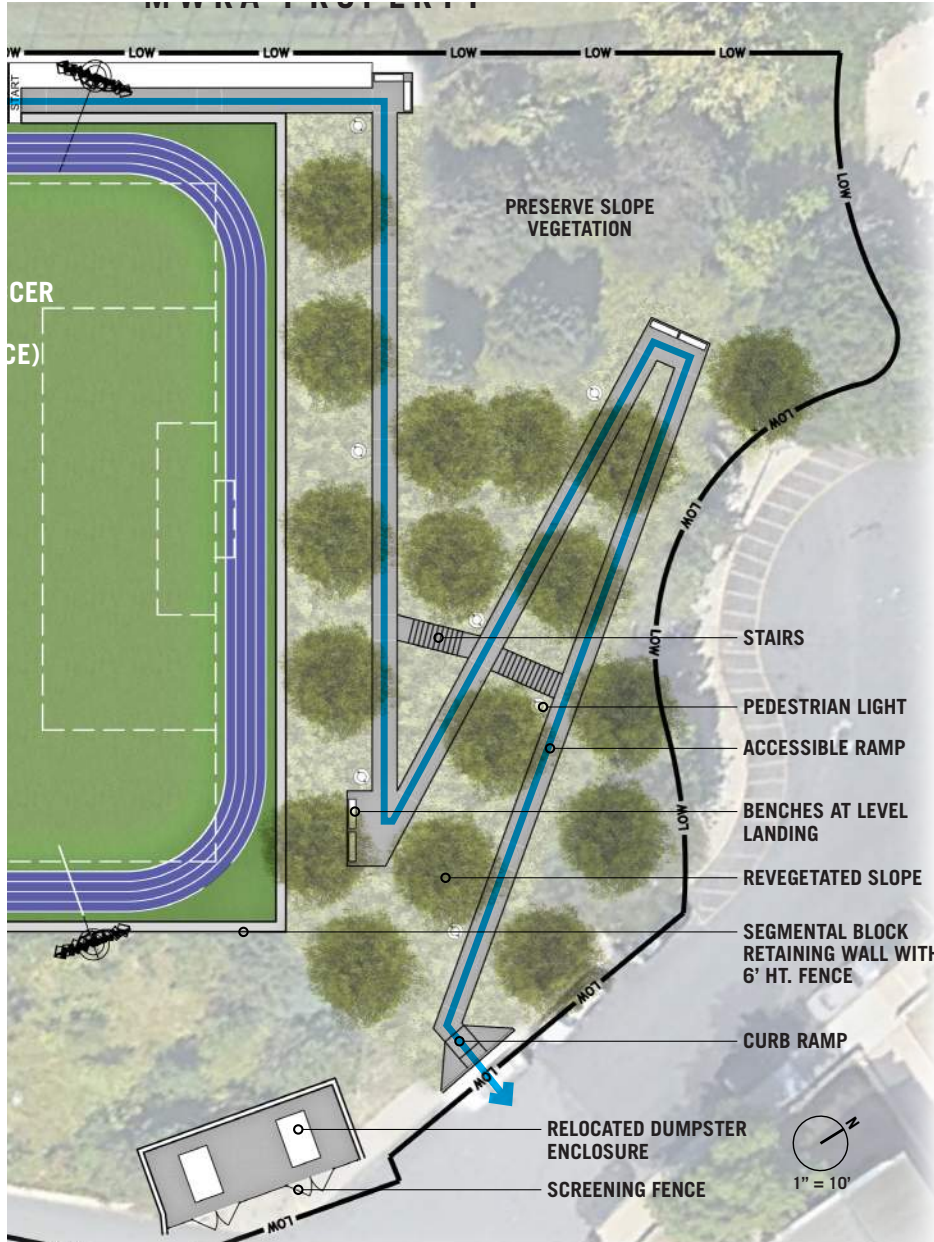


OVERALL SITE PLAN

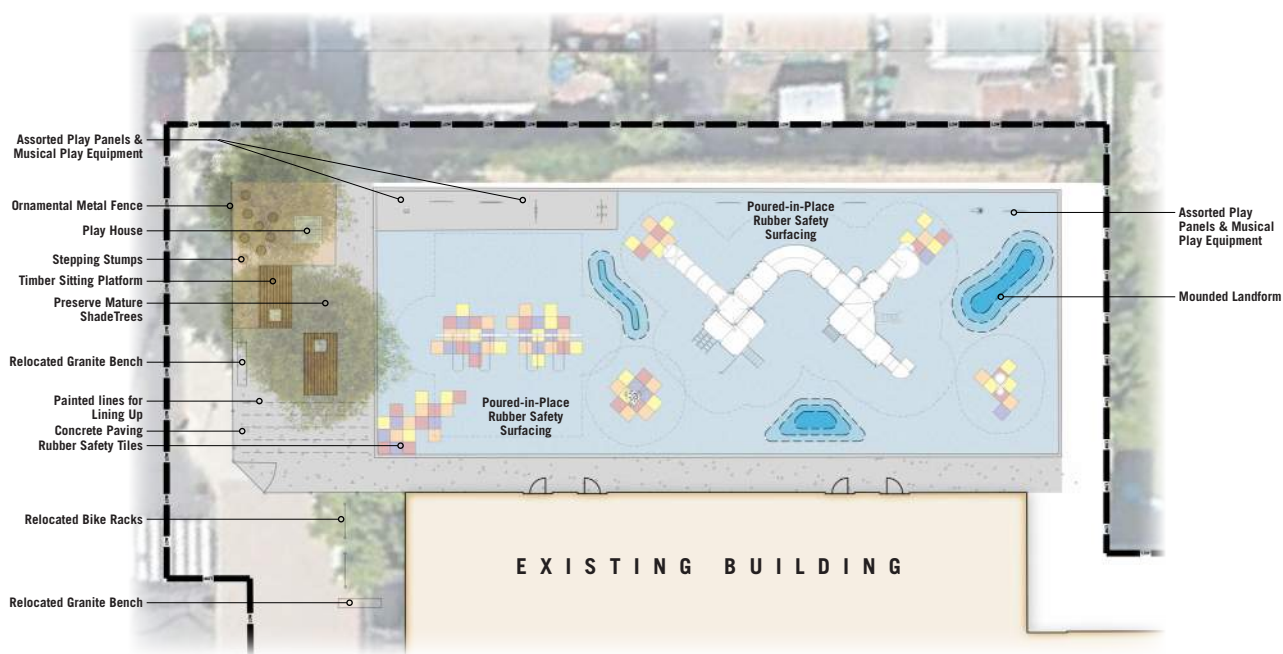


1" = 20'

RAMP

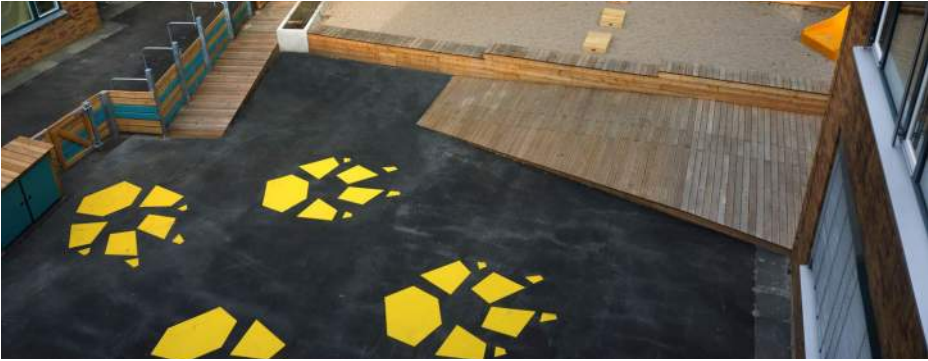
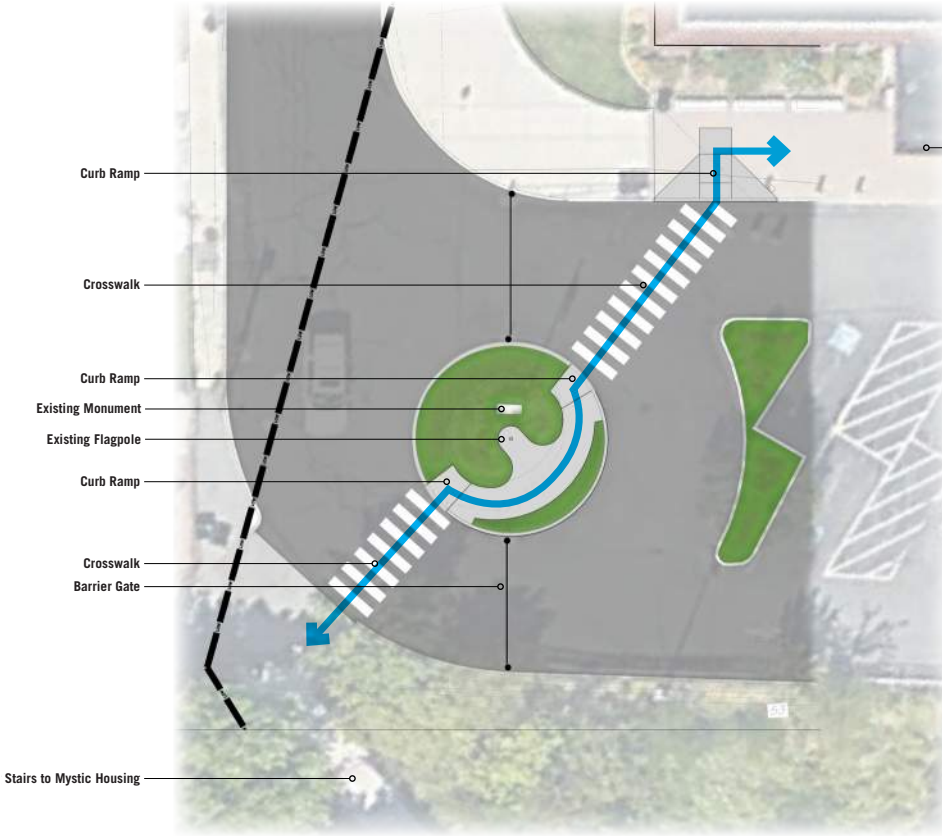


TOT-LOT CONCEPT



PLAY PANELS

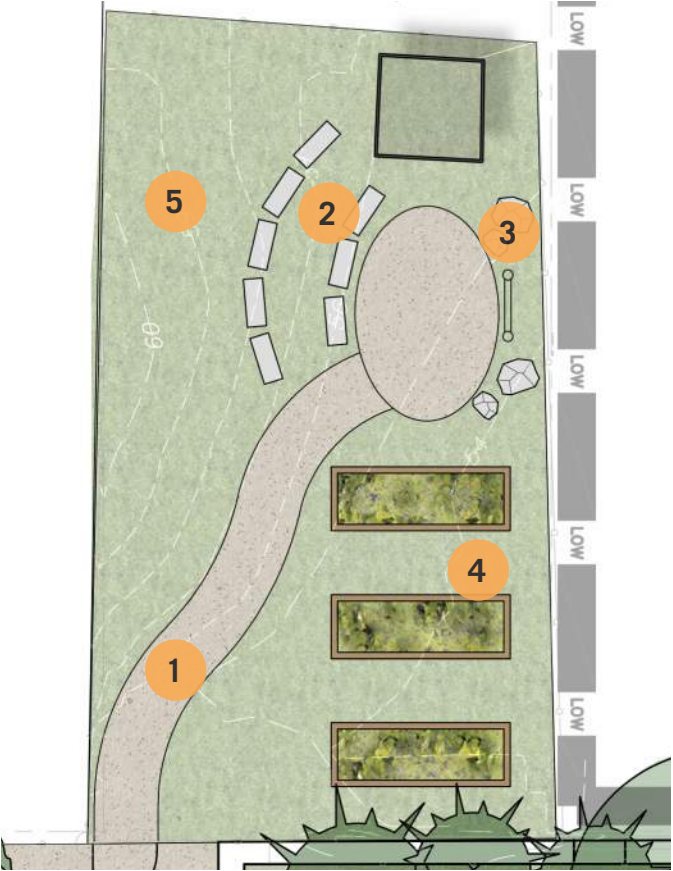
CONNECTION CONCEPT



UNIQUE PAINTED GRAPHICS



OUTDOOR LEARNING/SCHOOL GARDEN



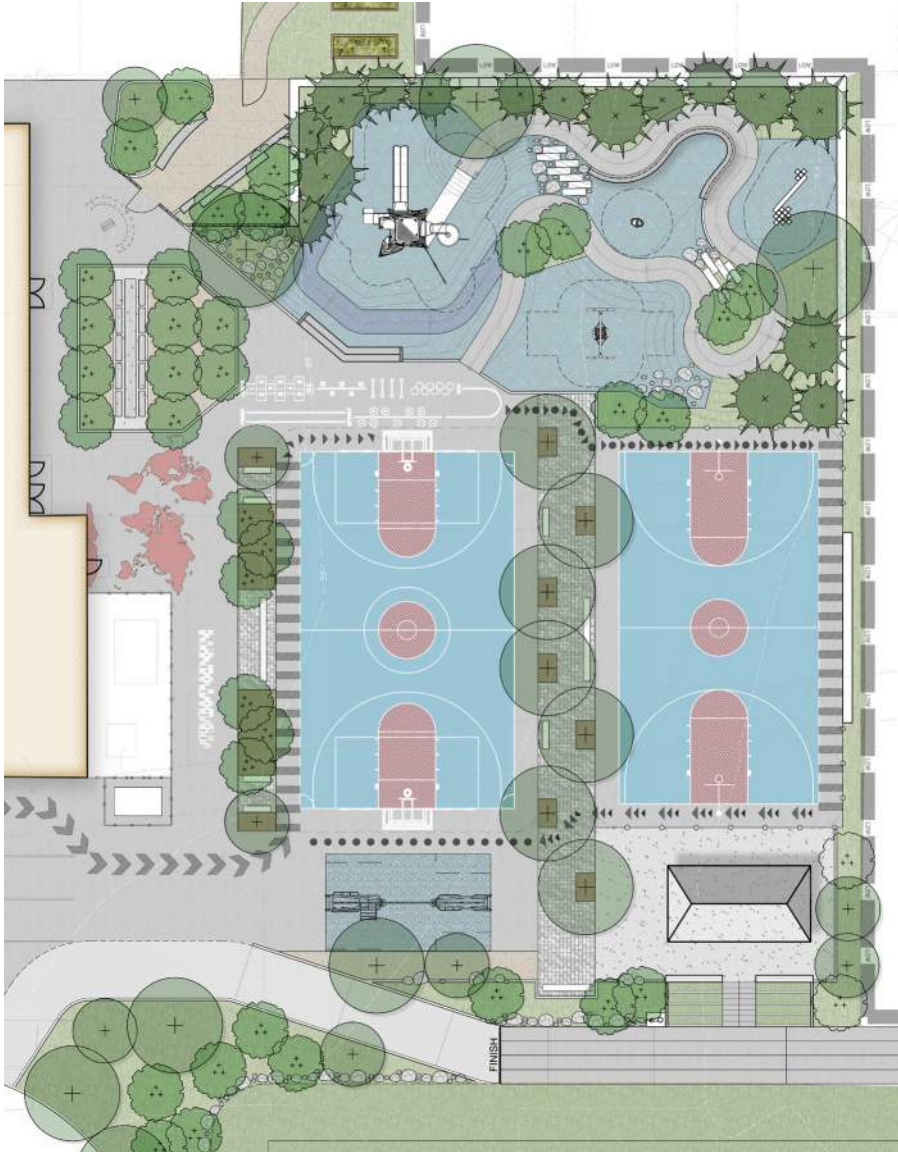
1. ACCESSIBLE STONE DUST PATH
2. RESET EXISTING STONE SEATING
3. WHITE BOARD
4. REALIGN PLANTERS
5. SELECTIVE PRUNING/CLEANING



SCHOOLYARD CONCEPTS



HAWK HUB



MOUNTAIN MEANDER

SCHOOLYARD ELEMENTS - BOTH DESIGNS



FITNESS



TOPOGRAPHY



MULTI-SPORT COURT



BASKETBALL, ARTIFICIAL TURF SOCCER FIELD AND PLAY EQUIPMENT FOR 5-12



LANDSCAPE IN PLAYGROUND



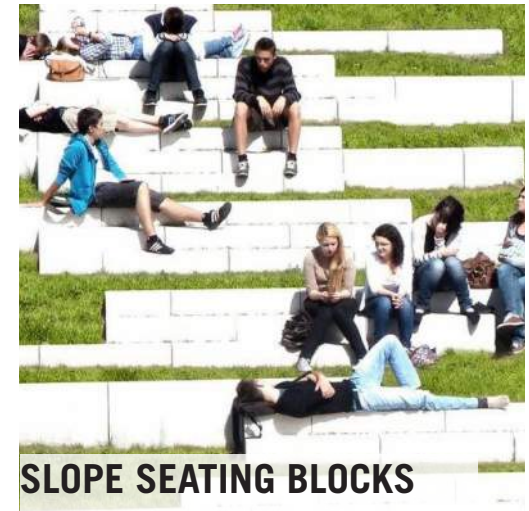
WALL BALL

SCHOOLYARD - HAWK HUB



1. ACCESSIBLE LOOPING SLOPED WALKWAY
- BOULDER SCRAMBLE ALONG SOME SLOPES
2. CLIMBING STRUCTURE WITH BRIDGE CONNECTOR
3. OVERLOOK AND CLIMBING WALL
4. MULTI-USE SHELTER (STAGE, OUTDOOR LEARNING, PICNIC GROVE)
5. SLOPED ASPHALT SEATING
6. MURAL WALL WITH SLOPED TURF SEATING (SPECTATOR)
7. SHADED TERRACED SEATING
8. SHELTER AND STEPPED SEATING
9. SPECTATOR SLOPE SEATING
10. ADULT FITNESS ZONE
11. PAINTED GRAPHICS/GAMES

HAWK HUB PASSIVE EXPERIENCE



HAWK HUB PLAY EXPERIENCE



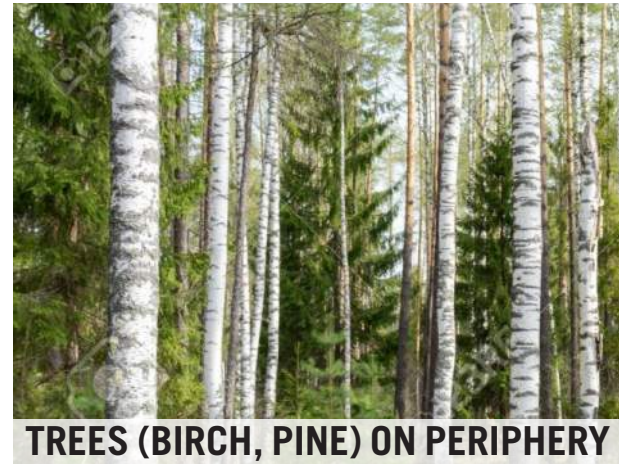
**SLOPED LOOP WALK/PLAY,
CENTRAL HUB**



**OVERLOOK(S) AND
CLIMBING PLAY WALL**



BOULDER SCRAMBLE



TREES (BIRCH, PINE) ON PERIPHERY

SCHOOLYARD - HAWK HUB



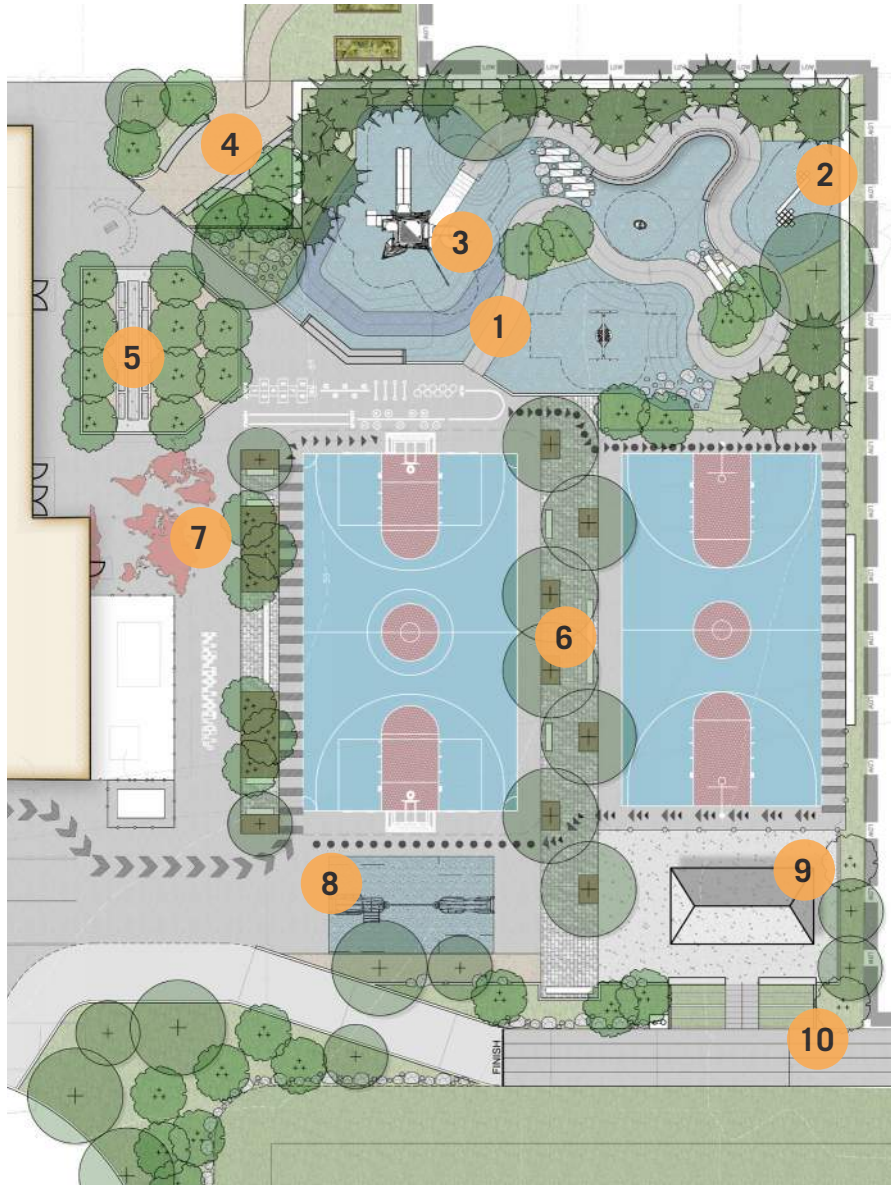
SCHOOLYARD - HAWK HUB



SCHOOLYARD - HAWK HUB



SCHOOLYARD - MOUNTAIN MEANDER



1. WINDING PATHWAY CREATES NODES OF PLAY SPACES ALONG ACCESSIBLE ROUTE

2. NATURE PLAY FEATURES

- BOULDER SCRAMBLES
- STEPPERS/BALANCE BEAM
- POCKETS OF PLANTING

3. OVERLOOK AND BRIDGE TO PLAY

4. OUTDOOR CLASSROOM EXTENSION

5. SHADED PICNIC GROVE

6. PERMEABLE PAVING ZONE BETWEEN COURTS

7. PAINTED GRAPHICS/GAMES

8. ADULT FITNESS ZONE

9. SHELTER

10. SPECTATOR SEATING

SCHOOLYARD - MOUNTAIN MEANDER



SCHOOLYARD - MOUNTAIN MEANDER



SCHOOLYARD - MOUNTAIN MEANDER



SCHOOLYARD - MOUNTAIN MEANDER



SLOPED WALK IN RUBBER



HORIZONTAL CLIMBING WALL

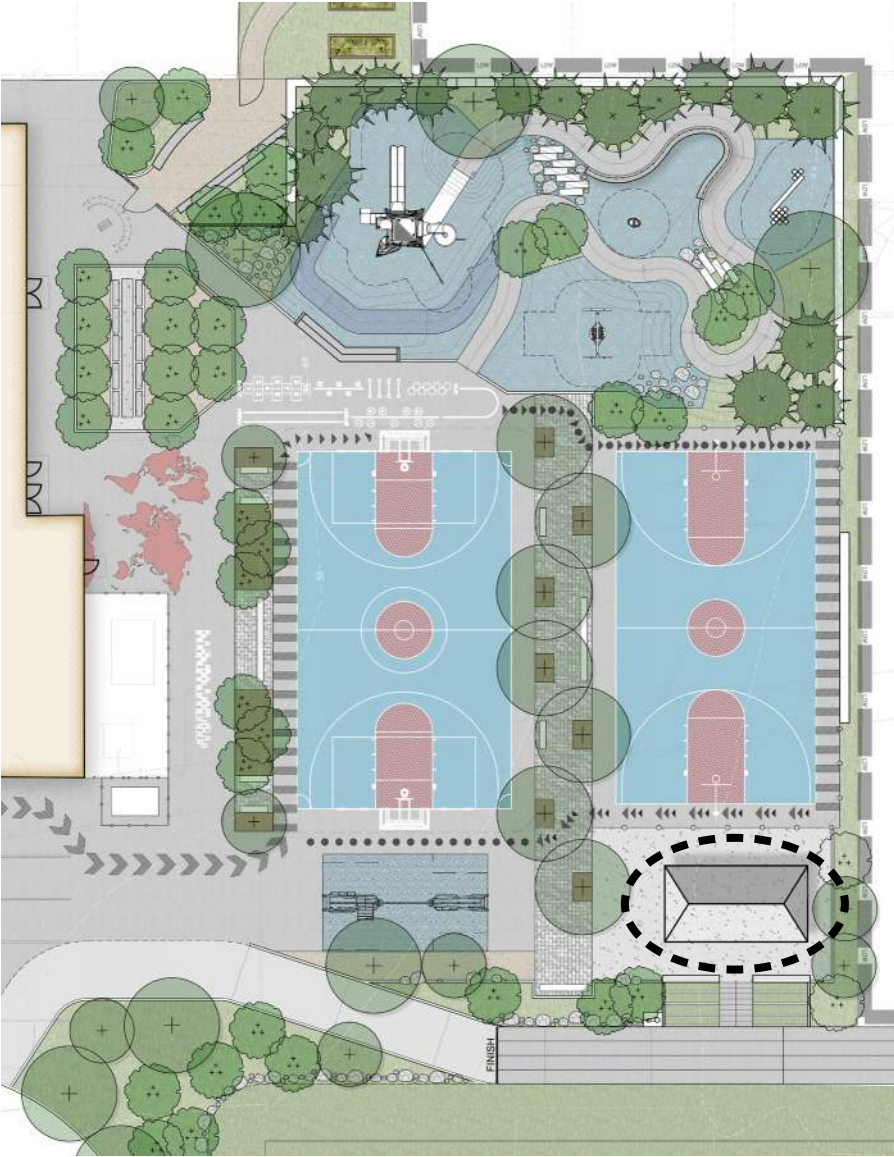


BOULDER SCRAMBLE

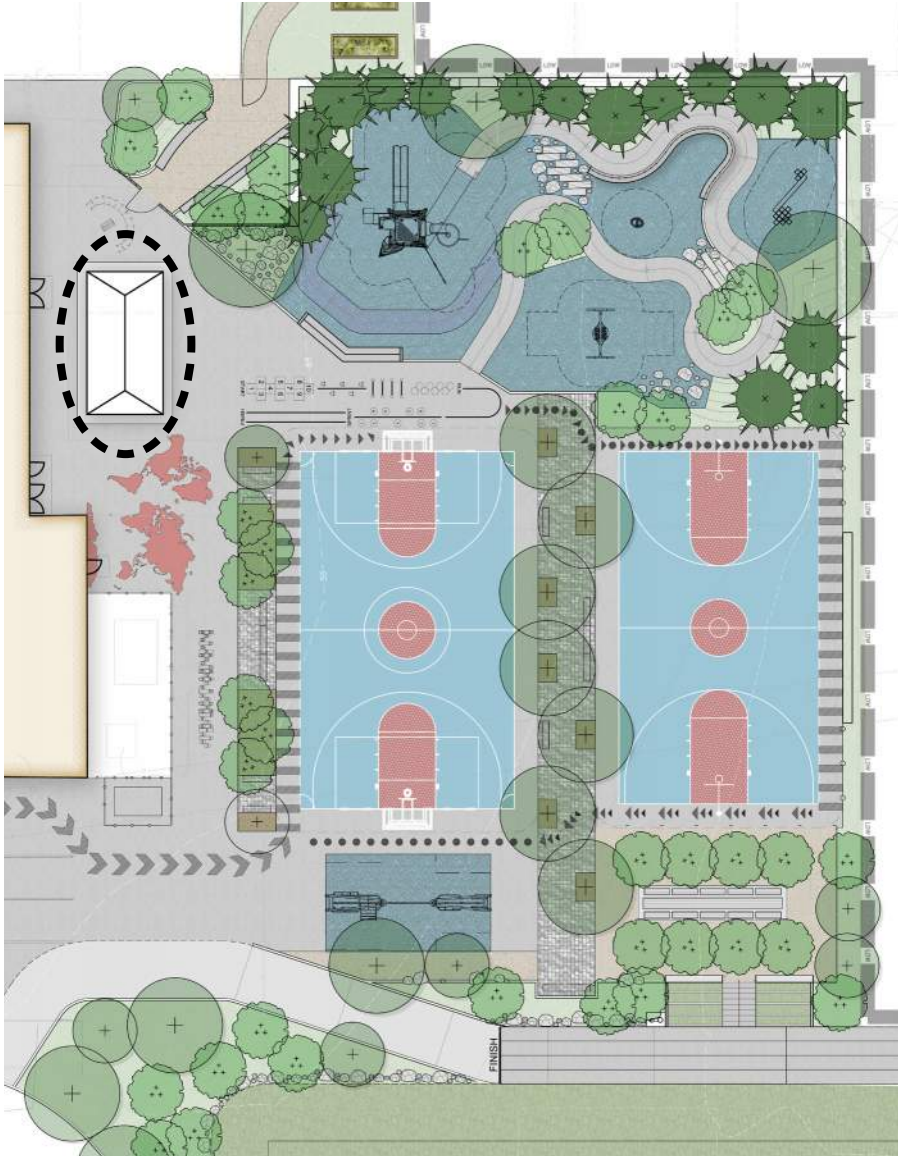


ARTIFICIAL TURF SEATING

SHELTER LOCATION - MOUNTAIN MEANDER

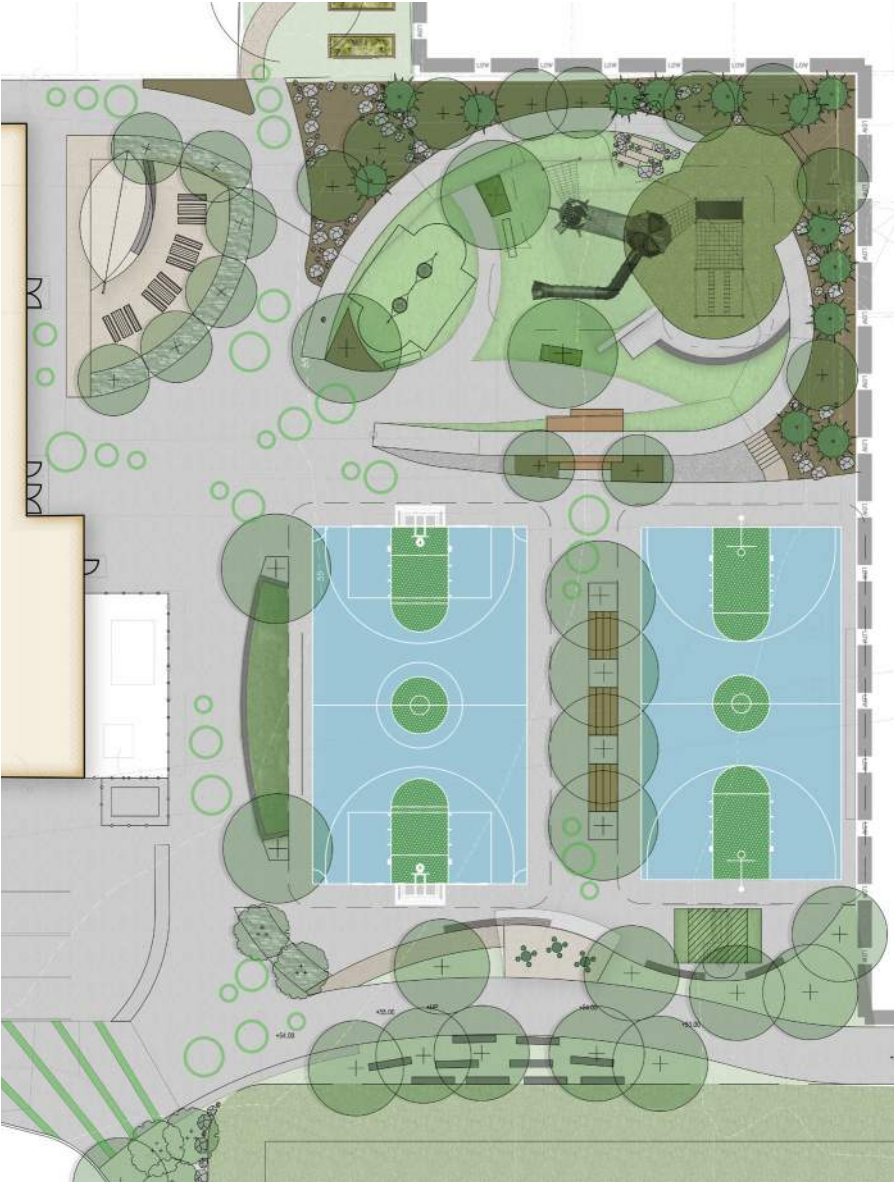


OVERLOOK TO FIELD

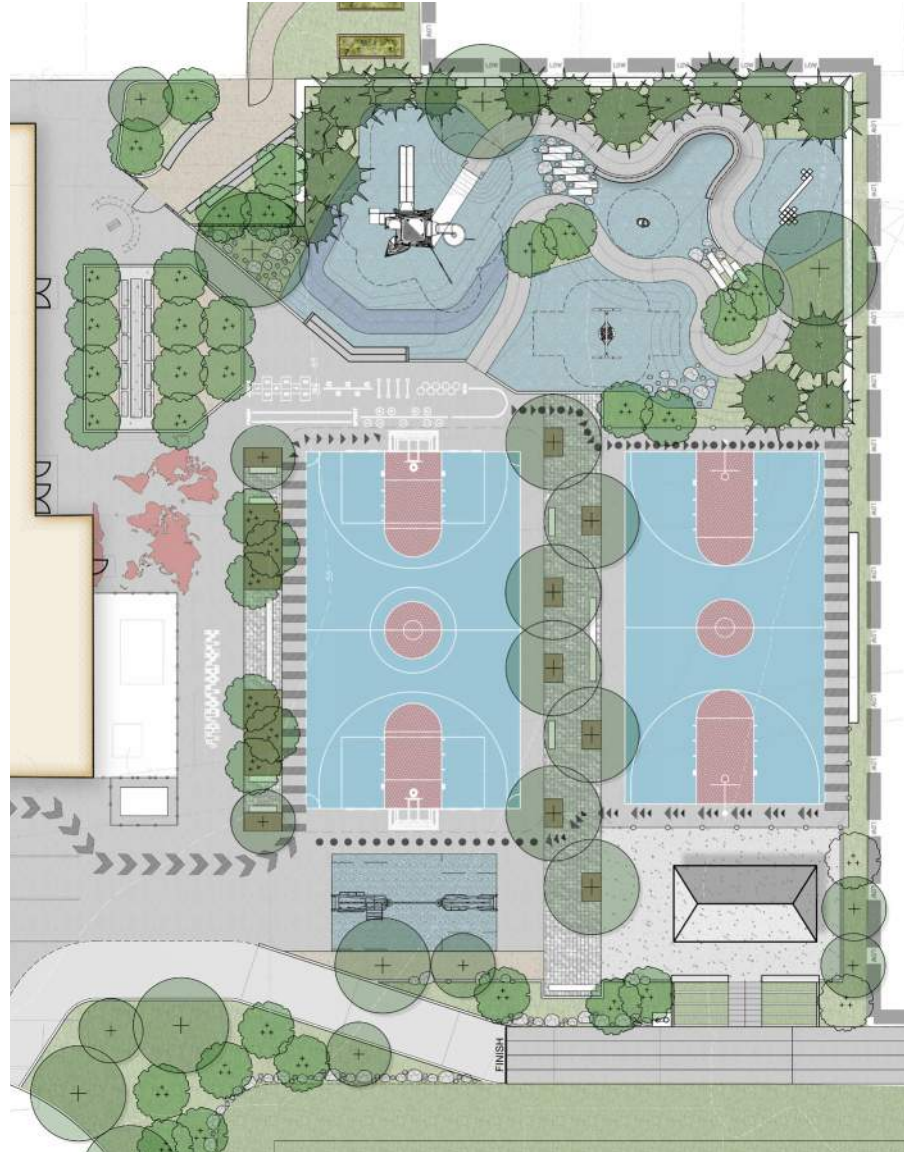


NEAR CAFETERIA

SCHOOLYARD CONCEPTS



HAWK HUB



MOUNTAIN MEANDER

PLAY EQUIPMENT

PLAY EQUIPMENT - ALL OPTIONS



RUBBER SURFACING AND PLANTING



SMALLER PLAY ELEMENTS



BRIDGE TO MAIN STRUCTURE



**OPEN SLIDE
OR SLIDE WITH
WINDOWS**



GROUP SWING

PLAY EQUIPMENT - OPTIONS



NET BRIDGE AND LOOKOUT



NET AND TOWER

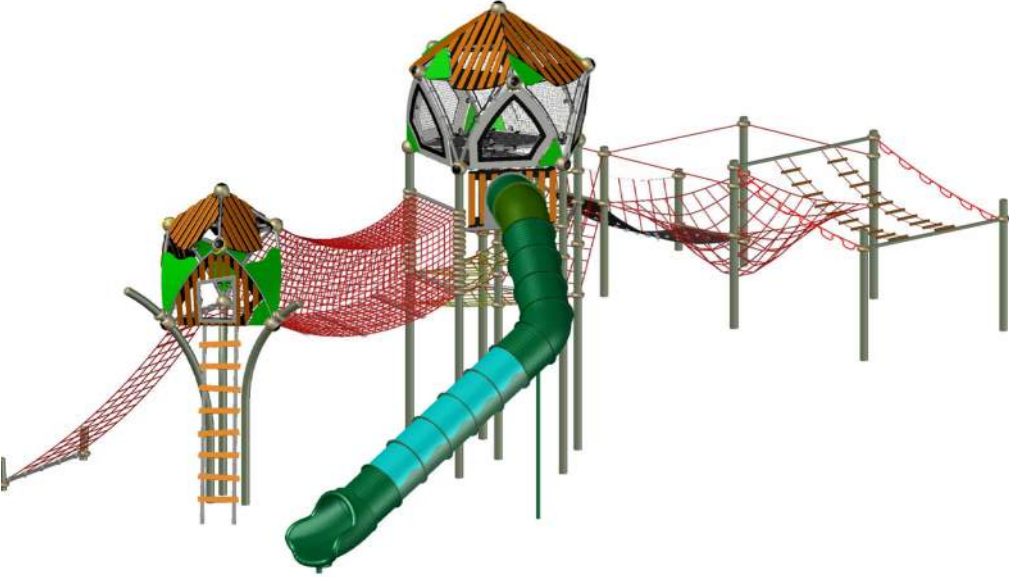


PLATFORM TOWER AND BRIDGE

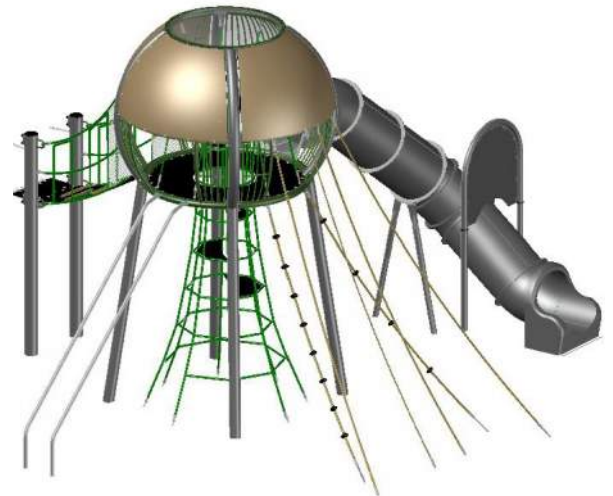
NET PLAY AND LOOKOUT



NET AND TOWER



PLATFORM BRIDGE AND TOWER



VOTING AND FEEDBACK

10 MINUTES TO PLACE YOUR VOTES



PREFERRED SCHOOLYARD DESIGN



1ST CHOICE PLAY



2ND CHOICE PLAY

**ADDITIONAL COMMENTS
- ANY COLOR**



RECAP

1. PREFERRED SCHOOLYARD DESIGN
2. PLAY EQUIPMENT
3. SHELTER LOCATION

NEXT STEPS

2019 JULY 9TH, 2019: COMMUNITY MEETING #2
JULY 2019: DESIGN DEVELOPMENT OF SCHOOLYARD
JULY/AUGUST 2019: RENOVATION OF 2-5 PLAYGROUND
SEPTEMBER 2019: ADDITIONAL COMMUNITY MEETING #3 PLANNED
LATE FALL 2019: COMMUNITY MEETING #4 - PRESENT FINAL DESIGN FOR MAIN SCHOOLYARD
DECEMBER 2019: CONSTRUCTION DOCUMENTS FOR SCHOOLYARD

2020 JANUARY 2020: BID FOR SCHOOLYARD
SPRING 2020: CONSTRUCTION BEGINS FOR SCHOOLYARD
FALL 2020: CONSTRUCTION COMPLETE FOR SCHOOLYARD
WINTER 2020: BID RELEASED FOR FIELD AND PATH CONSTRUCTION

2021 SPRING 2021: FIELD AND PATH CONSTRUCTION STARTS
SUMMER 2021: FIELD CONSTRUCTION COMPLETE

CONTACT

ARN FRANZEN

DIRECTOR OF PARKS AND OPEN SPACE
OFFICE OF STRATEGIC PLANNING AND COMMUNITY DEVELOPMENT
afranzen@somervillema.gov
617.625.6600 ext 2545