

# ARTHUR D. HEALEY SCHOOL

SCHOOLYARD RENOVATION COMMUNITY MEETING #4  
NOVEMBER 7<sup>TH</sup>, 2019

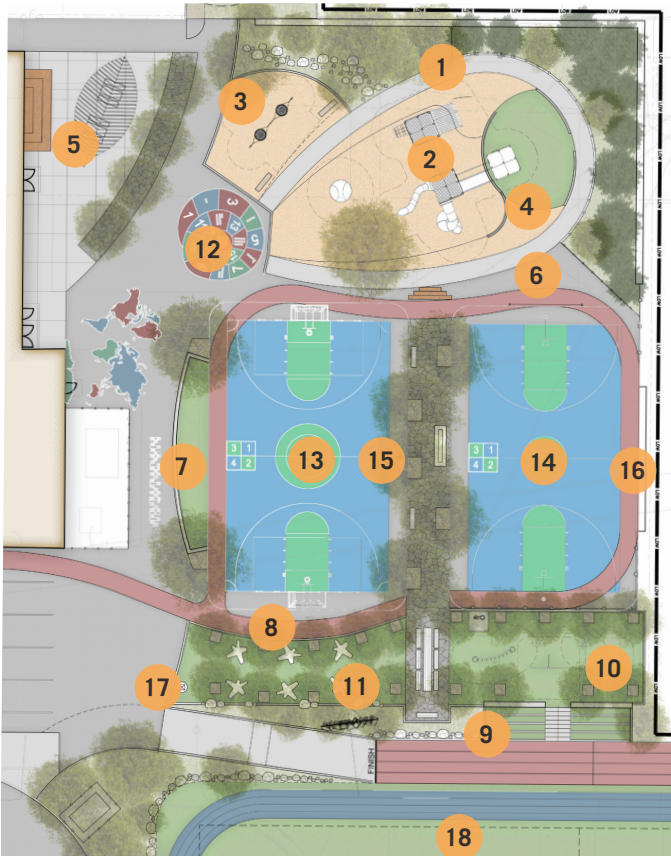


**Project** Healey Schoolyard Renovation  
**Date** 11/07/2019  
**Location** Arthur D. Healey School - Healey School Cafeteria  
**Purpose** Community Meeting #4

## Notes:

Warner Larson Landscape Architects (WL) presented the “Hawk Hub” final design for the Healey Schoolyard. The overall design features the following improvements: (1.) U-12 soccer field and ramp, (2.) tot-lot renovations, (3.) enhanced turn around/crossing at school entrance, and (4.) schoolyard renovations. The schoolyard design is a hybrid based on the feedback from the previous community meetings, the online survey and meetings with the Healey teachers and students. At Community Meeting #3, WL presented two plans for the schoolyard and the community votes was split 14-10. During a follow-up meeting with the Healey teachers and student representatives, there was a preference for the “Hawk Hub” option, with some alterations to include from the second design option. The play equipment main structure basis of design includes a tower structure with an ADA accessible bridge and multiple climbing options. Other play elements include basket swings, group spinner, and rock climbing wall.

## Hawk Hub



1. ACCESSIBLE LOOPING SLOPED WALKWAY
2. CLIMBING STRUCTURE WITH BRIDGE CONNECTOR
3. BASKET SWINGS
4. OVERLOOK AND CLIMBING WALL
5. MULTI-USE SHELTER (STAGE, OUTDOOR LEARNING)
6. SLOPED ASPHALT SEATING
7. MURAL WALL WITH SLOPED TURF SEATING (SPECTATOR)
8. TRIKE PATH
9. SPECTATOR SEATING
10. ADULT FITNESS ZONE
11. PASSIVE PLAZA/PICNIC GROVE
12. PAINTED GRAPHICS/GAMES
13. MULTI-SPORT COURT
14. BASKETBALL COURT
15. YOUTH HOOP
16. BALL WALL
17. SCULPTURE
18. FIELD

Following the presentation, the community members had several questions and recommendations.

#### Tot-Lot

- Show the existing “buddy bench” in the design
- Concerns with retrofits on existing main structure (Retrofit included converting structure from 5-12 to 2-5 age group)
  - Consider making the existing structure more age appropriate or consider replacing
  - Summer improvements did not alleviate all issues with the structure - recently one child suffered a leg fracture in the tube slide
  - Younger children are able to climb over a newly installed panel near the tube slide, also adding to concerns about retrofits

#### Multi-Sport Court

- If project is phased between schoolyard and U-12 field construction, multi-sport court allows for soccer area (kids currently use field hockey area for soccer)
- Alerts users the space is more than just basketball (multi-use open space vs just one use) and more inviting for kids who don’t play basketball
- Paved basketball area in Phase 2 could be temporary soccer instead of multi-sport court
- Little need for multi-sport court once soccer field is constructed - school gets priority to use field over leagues

#### Artificial Turf Infill

- Question if brock infill will be used on turf at U-12 field, passive plaza space and at play area, if turf is used as safety surfacing
- Infill will be used on U-12 field but too early to know brand of infill. Play area and plaza may include sand infill

#### Fencing

- Would prefer taller fence or sports netting - there are issues with kids climbing over or under existing fence to retrieve balls
- Parent has seen a child climb over fences in Healey schoolyard and MWRA property

#### Toilets

- Consider including space for portable toilets when Healey School building is closed

