



Ward 4 City Councilor Jesse Clingan, the Somerville Department of Public Space and Urban Forestry, and the Somerville School Department invite you to the fourth

**Healey Schoolyard Design
Community Meeting**
Thursday, November 7, 2019 6:30 – 8:00 p.m.

Please join us as we preview the new schoolyard layout and features.

Where: Healey School cafeteria at 5 Meacham Street

See the plans, review previous meetings, and sign up for future project updates at www.somervillema.gov/healeyschoolyard. For more information contact Arn Franzen:

AFranzen@somervillema.gov.



ARTHUR D. HEALEY SCHOOL

SCHOOLYARD RENOVATION COMMUNITY MEETING #4
NOVEMBER 7TH, 2019



PRESENTATION OVERVIEW

1. TIMELINE

2. RECAP OF PROCESS TO DATE

3. OVERALL SITE PLAN

- FIELD & RAMP
- TOT-LOT & CONNECTION
- SCHOOLYARD DESIGN

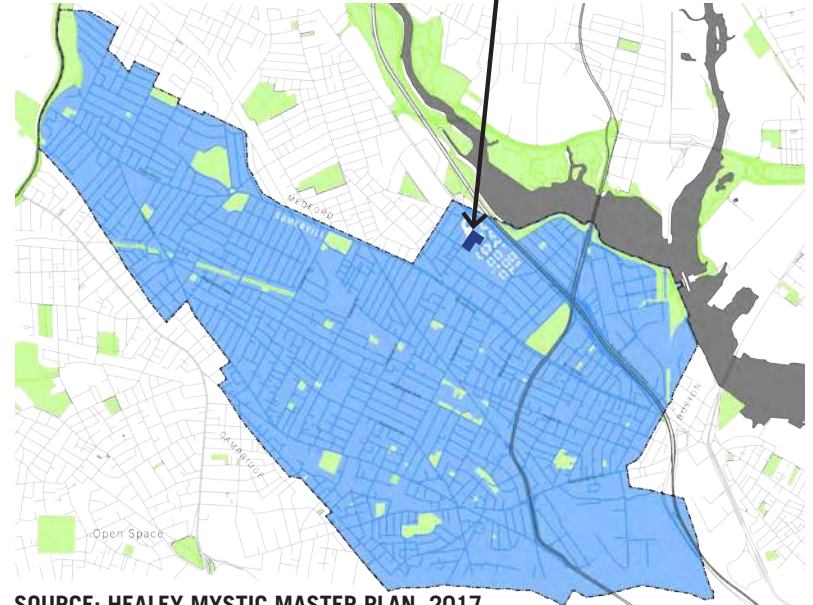
4. FINAL CONCEPT DESIGN

5. PLAY ELEMENTS

6. MATERIAL INSPIRATION/PRECEDENTS

7. PHASING AND NEXT STEPS

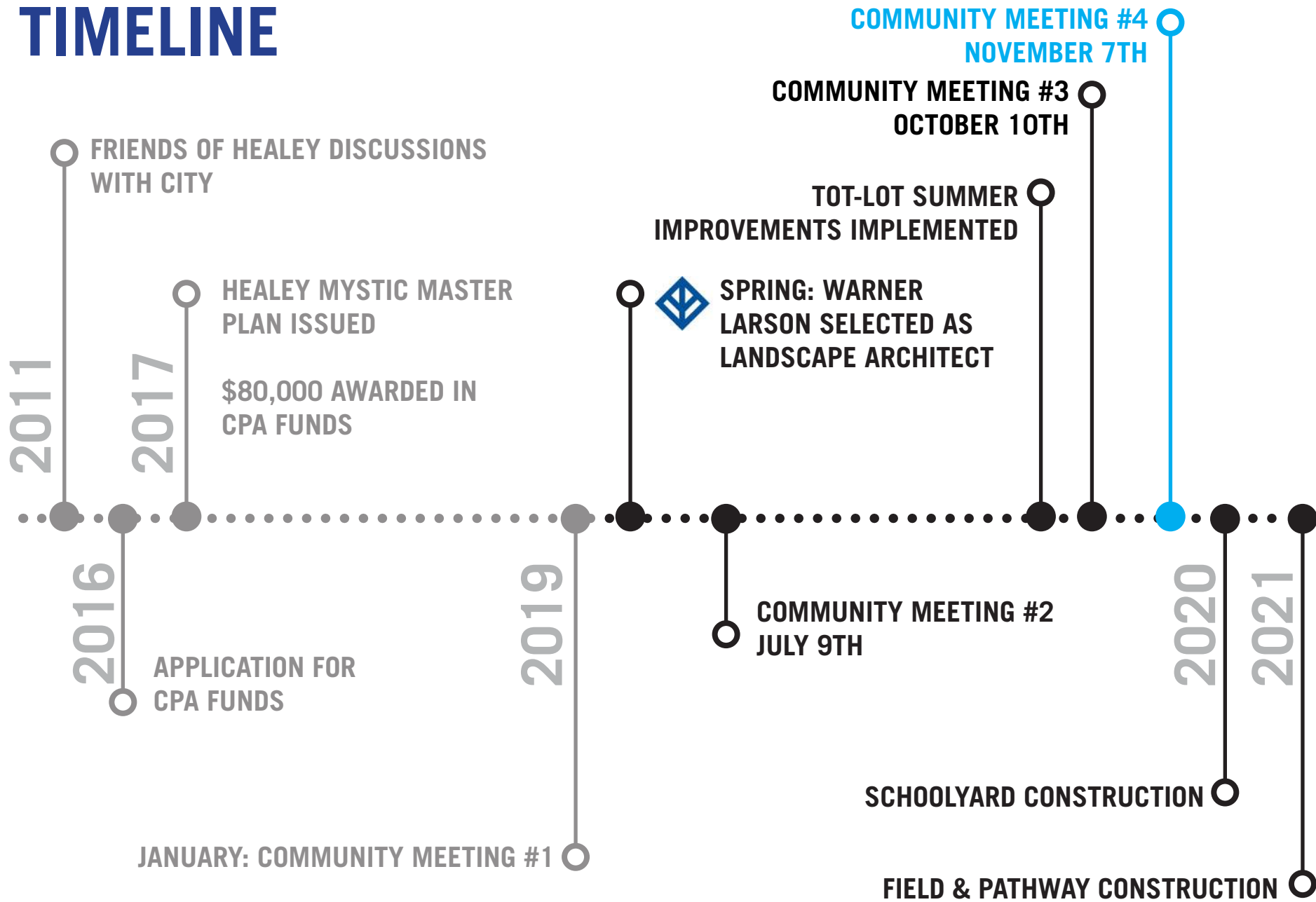
HEALEY SCHOOLYARD



SOURCE: HEALEY MYSTIC MASTER PLAN, 2017

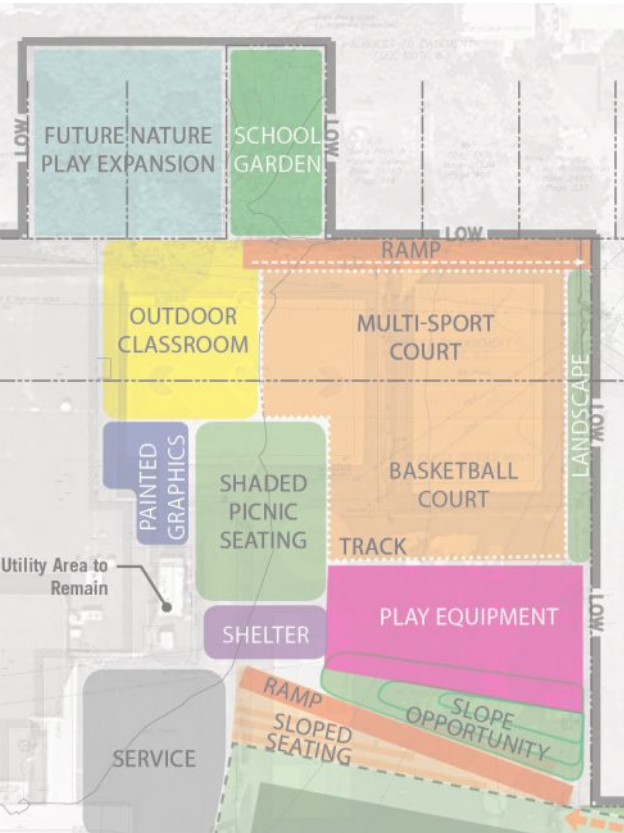


TIMELINE

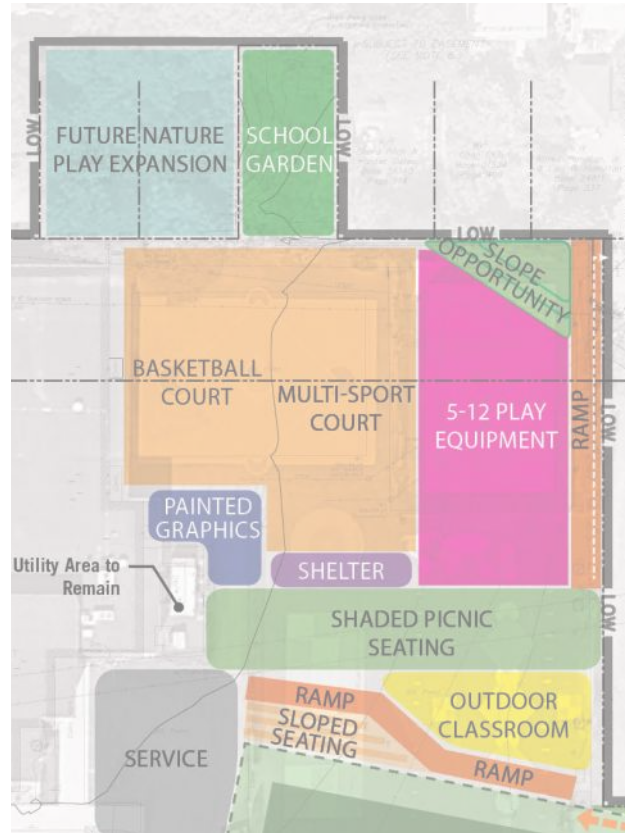


RECAP - MEETING 2 DESIGN OPTIONS

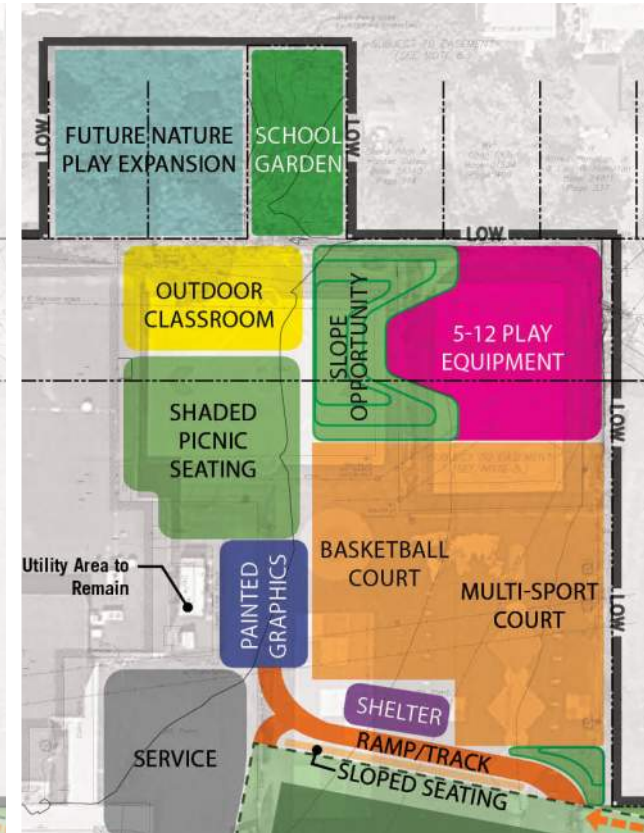
OPTION C - PREFERRED (VOTING)



ALTERNATIVE A



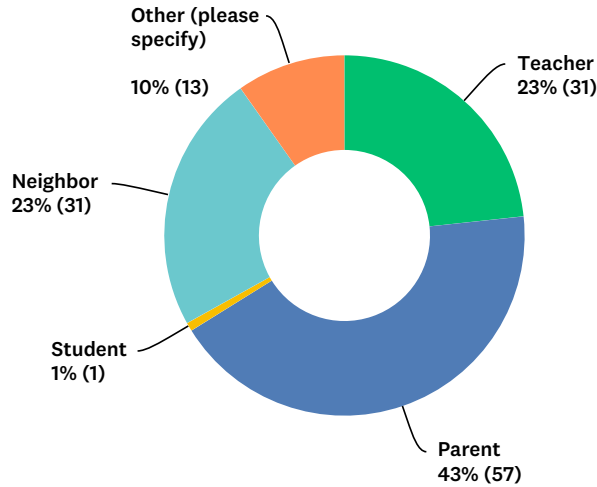
ALTERNATIVE B



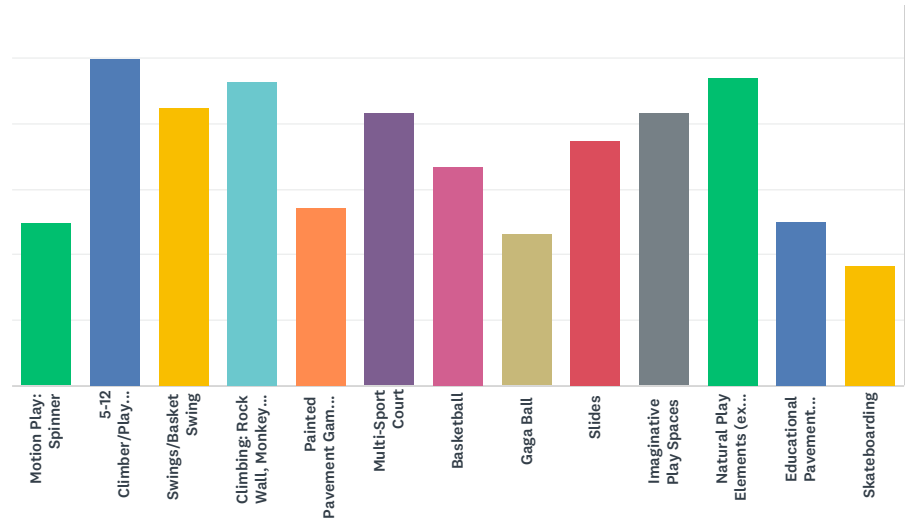
ALTERNATIVE C

SURVEY RESULTS

133 TOTAL RESPONSES !!



PLEASE RANK IN ORDER THE FOLLOWING PROPOSED SCHOOLYARD PLAY ELEMENTS:



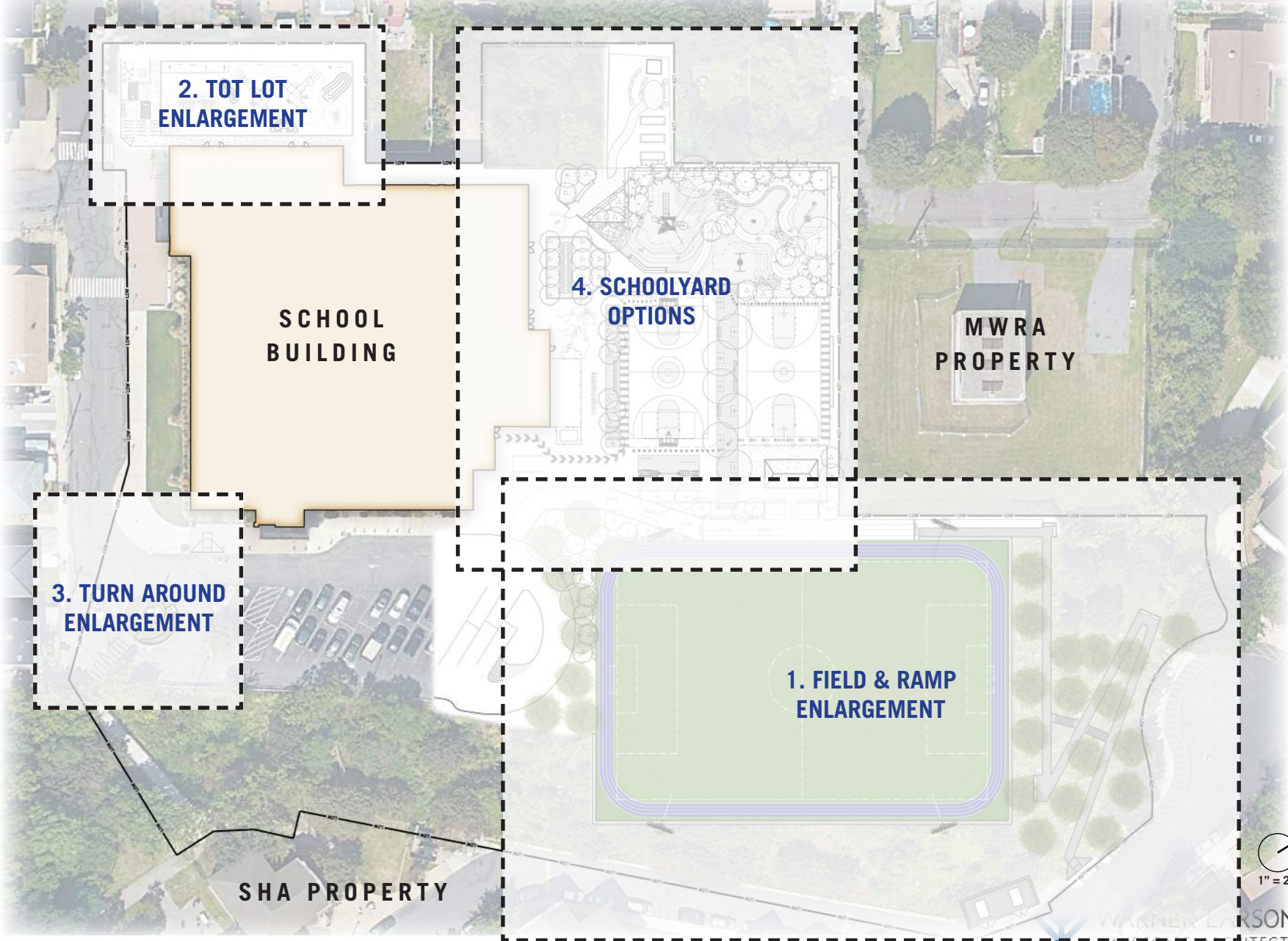
TOP 5 MOST DESIRED PLAY ELEMENTS:

1. 5-12 CLIMBER/PLAY STRUCTURE
2. NATURE PLAY ELEMENTS
3. CLIMBING: ROCK WALL, MONKEY BARS, LADDERS
4. SWINGS/BASKET SWING
5. IMAGINATIVE PLAY SPACES

GREEN ACTIVIST
SOMERVILLE RESIDENT
YOUTH WORKER
PARKOUR COACH
FAMILY AND COMMUNITY LIAISON
GARDEN VOLUNTEER
PARENT AND TEACHER
NEIGHBOR AND FORMER PARENT
VISITOR FROM ARLINGTON
PARENT AND NEIGHBOR

WE ALSO HEARD...

OVERALL SITE PLAN

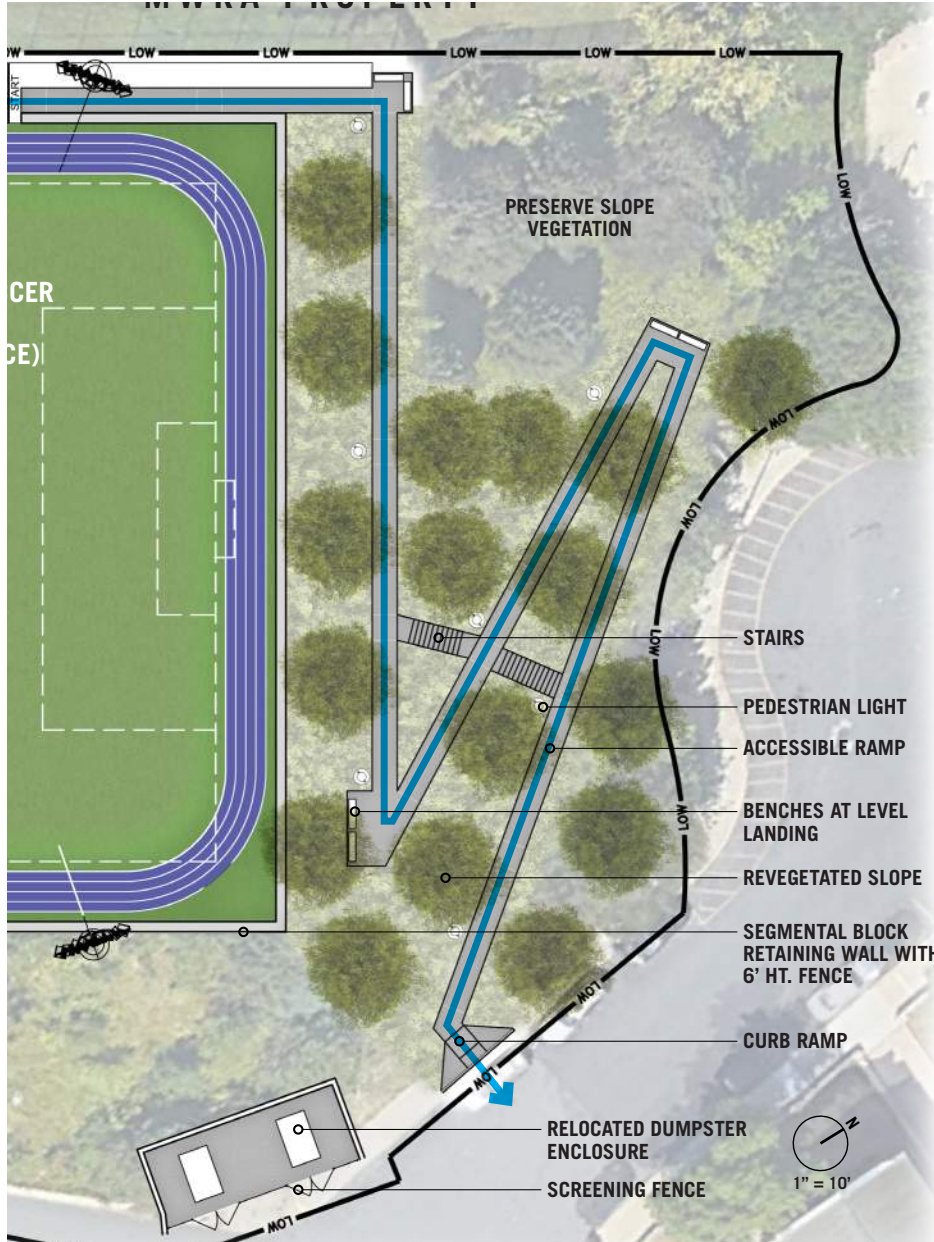


1" = 20'

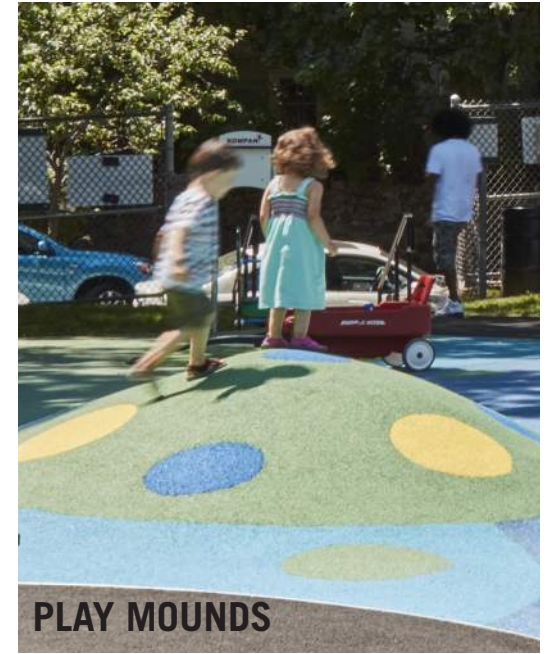
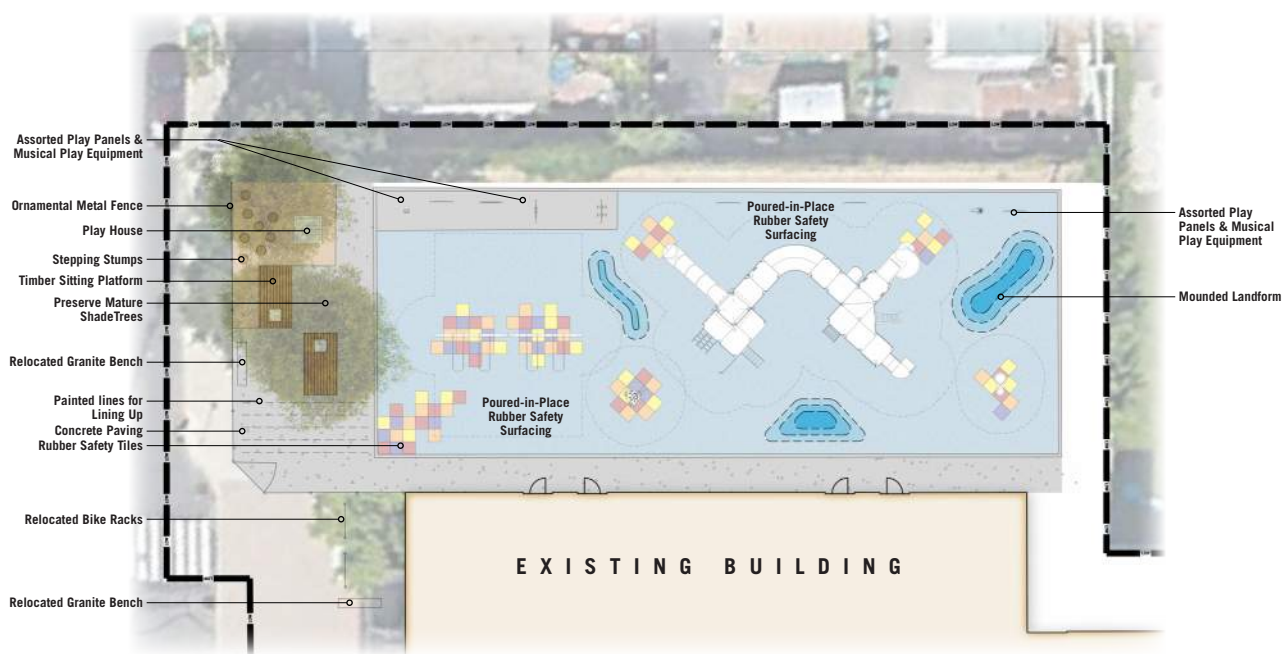
FIELD



RAMP

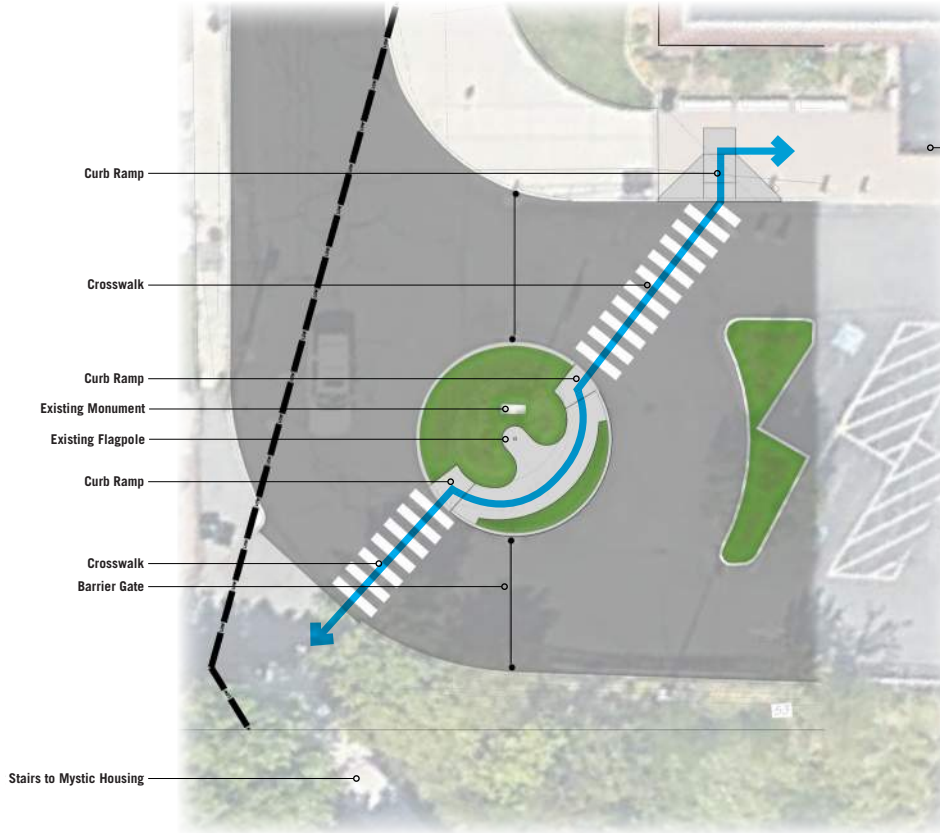


TOT-LOT CONCEPT



PLAY PANELS

CONNECTION CONCEPT

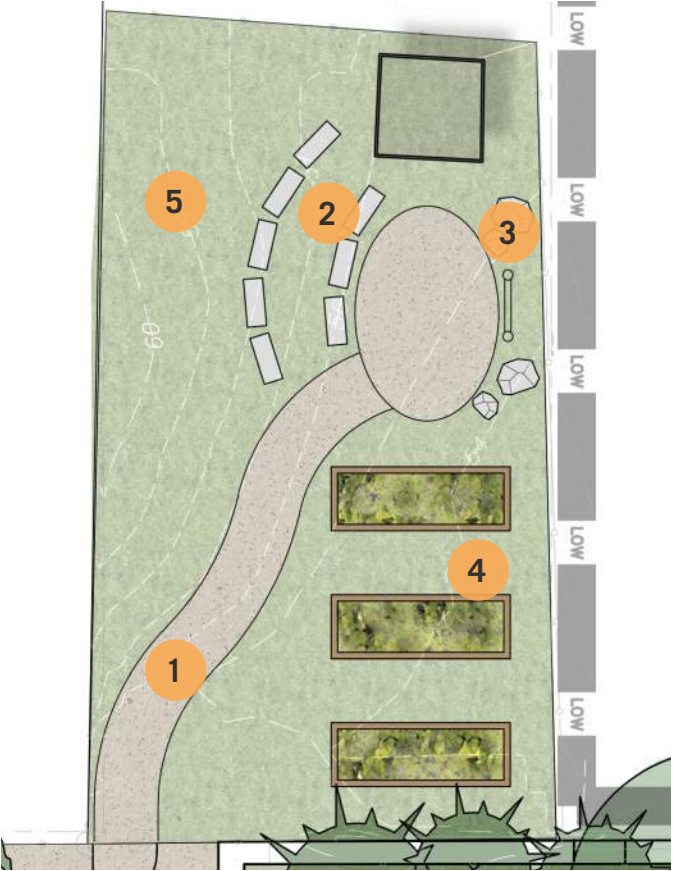


UNIQUE PAINTED GRAPHICS



WARNER LARSON
LANDSCAPE ARCHITECTS

OUTDOOR LEARNING/SCHOOL GARDEN



1. ACCESSIBLE STONE DUST PATH
2. RESET EXISTING STONE SEATING
3. WHITE BOARD
4. REALIGN PLANTERS
5. SELECTIVE PRUNING/CLEANING



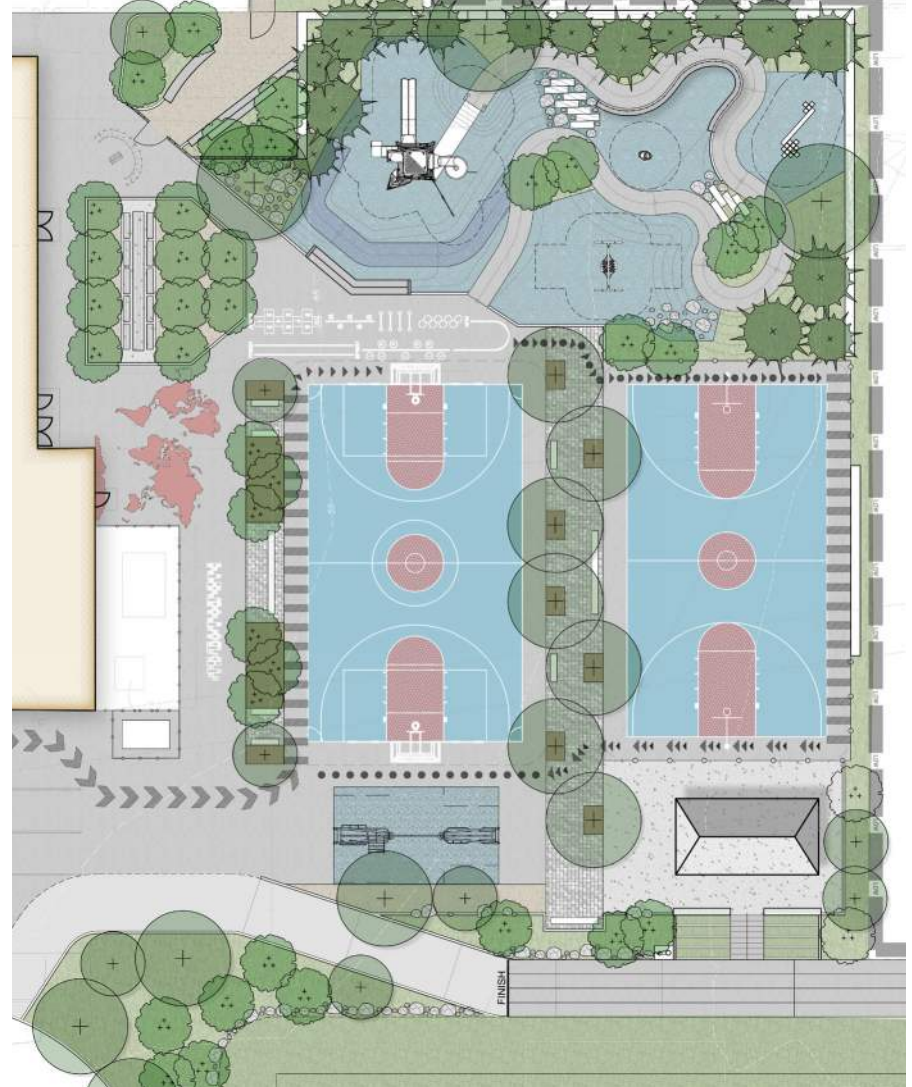
RECAP - MEETING 3 DESIGN OPTIONS

10 VOTES



HAWK HUB

14 VOTES



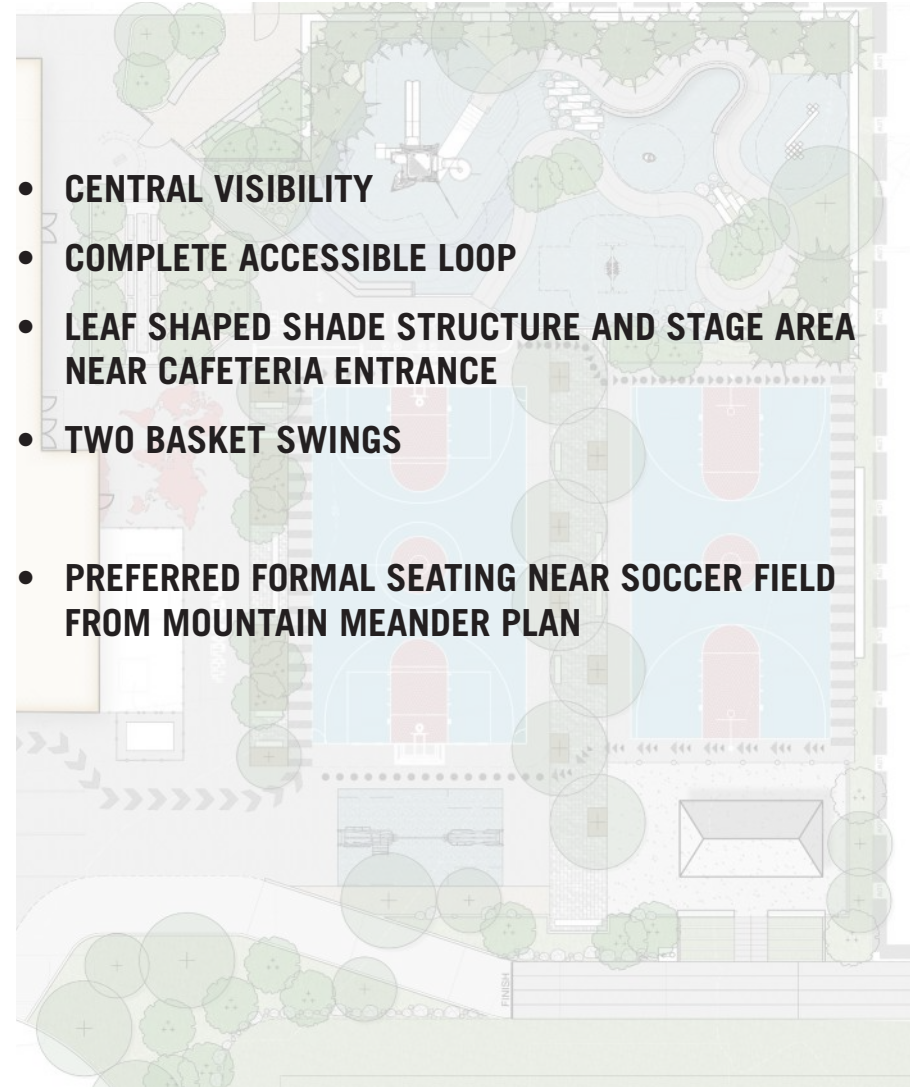
MOUNTAIN MEANDER

RECAP - STUDENT+ TEACHER INPUT

TEACHERS + STUDENT PREFERENCE:



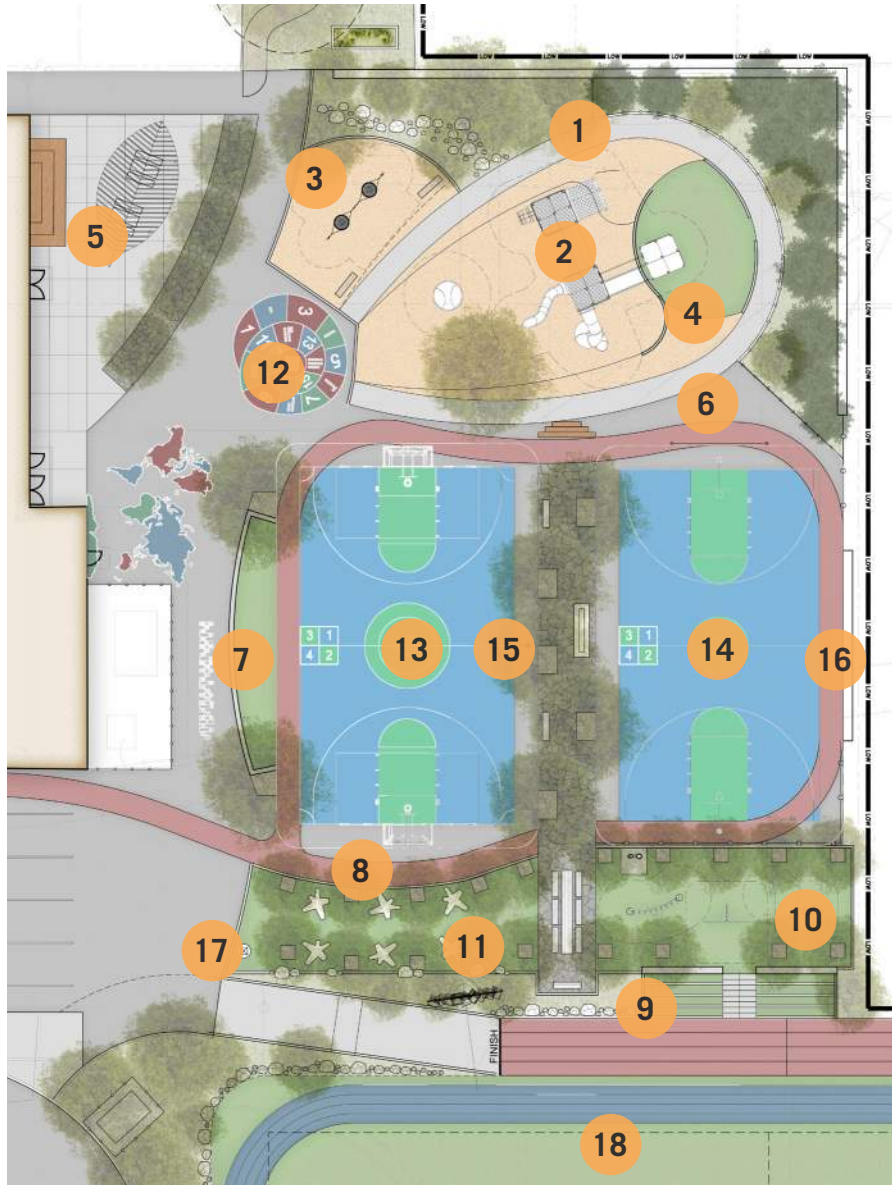
HAWK HUB



- **CENTRAL VISIBILITY**
- **COMPLETE ACCESSIBLE LOOP**
- **LEAF SHAPED SHADE STRUCTURE AND STAGE AREA NEAR CAFETERIA ENTRANCE**
- **TWO BASKET SWINGS**
- **PREFERRED FORMAL SEATING NEAR SOCCER FIELD FROM MOUNTAIN MEANDER PLAN**

MOUNTAIN MEANDER

HAWK HUB SCHOOLYARD PLAN

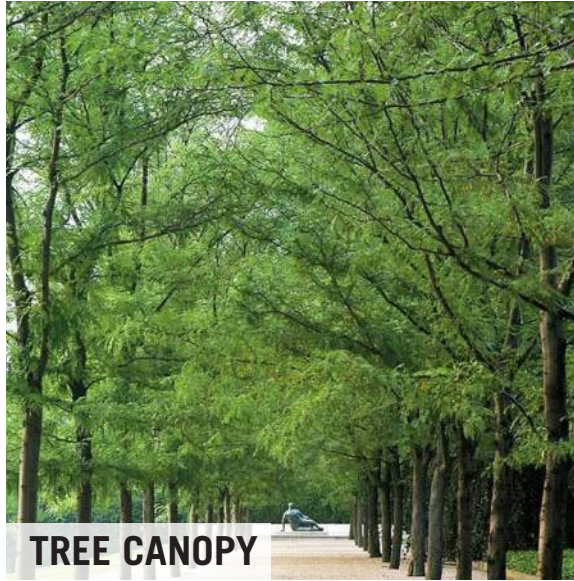


1. ACCESSIBLE LOOPING SLOPED WALKWAY
2. CLIMBING STRUCTURE WITH BRIDGE CONNECTOR
3. BASKET SWINGS
4. OVERLOOK AND CLIMBING WALL
5. MULTI-USE SHELTER (STAGE, OUTDOOR LEARNING)
6. SLOPED ASPHALT SEATING
7. MURAL WALL WITH SLOPED TURF SEATING (SPECTATOR)
8. TRIKE PATH
9. SPECTATOR SEATING
10. ADULT FITNESS ZONE
11. PASSIVE PLAZA/PICNIC GROVE
12. PAINTED GRAPHICS/GAMES
13. MULTI-SPORT COURT
14. BASKETBALL COURT
15. YOUTH HOOP
16. BALL WALL
17. SCULPTURE
18. FIELD

SUSTAINABILITY



STORMWATER MANAGEMENT



TREE CANOPY



SUSTAINABLE MATERIALS



LIGHTING

- **STORMWATER MANAGEMENT**
 - **INCREASED PERMEABILITY**
 - **TURF**
 - **RUBBER SURFACING**
 - **TREE PITS**
 - **PERMEABLE PAVERS**
- **MICROCLIMATE AND HABITAT**
 - **INCREASED TREE CANOPY**
 - **BIODIVERSITY**
- **SUSTAINABLE MATERIALS**
- **LIGHTING**
 - **LEED STANDARDS - LED**
 - **NIGHT FRIENDLY SKY LIGHTING**

STORM WATER CAPTURE

TOTAL SITE AREA: 160,400 SF

24% INCREASE IN PERVIOUS SURFACES SITE WIDE



SCHOOLYARD ELEMENTS



FITNESS



TOPOGRAPHY



MULTI-SPORT COURT



BASKETBALL, ARTIFICIAL TURF SOCCER FIELD AND PLAY EQUIPMENT FOR 5-12



LANDSCAPE IN PLAYGROUND



WALL BALL

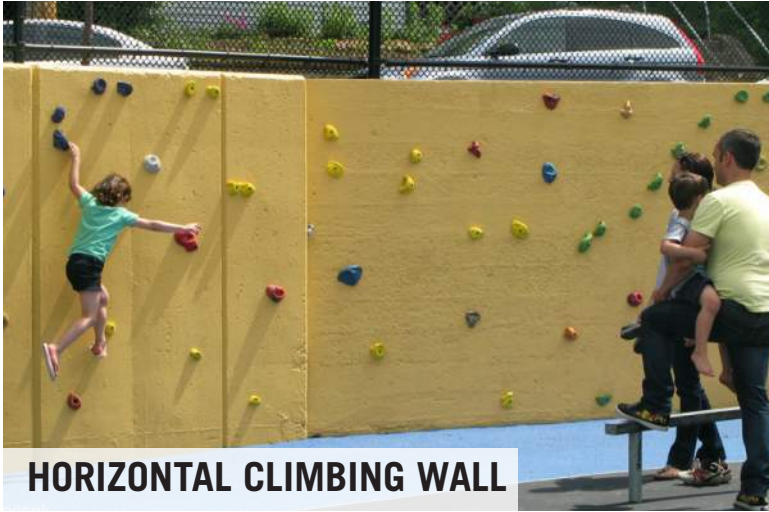
SCHOOLYARD ELEMENTS



MULTI-USE SHELTER



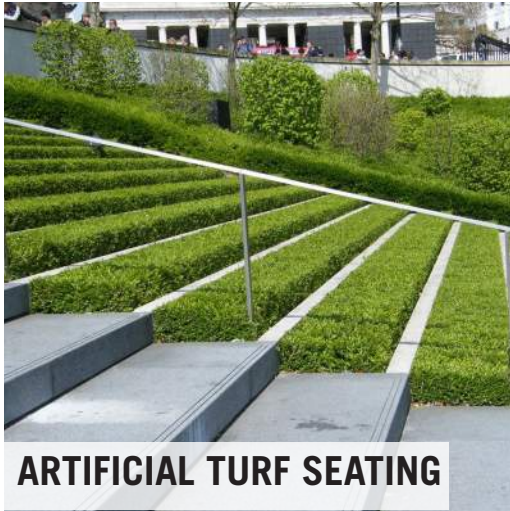
SLOPED ASPHALT



HORIZONTAL CLIMBING WALL



TERRACED BENCH



ARTIFICIAL TURF SEATING



SLOPED TURF SEATING



**TREES (BIRCH, PINE)
ON PERIPHERY**

SCHOOLYARD - VIEW AT COURTS



SCHOOLYARD - VIEW AT FIELD



PLAY EXPERIENCE

PLAY EQUIPMENT - STRUCTURE

- ADVENTURE TOWER AND OVERLOOK
- MULTIPLE CLIMBING OPTIONS
- BRIDGES: ACCESSIBLE RAMP AND ROPE BRIDGE
- MONKEY BARS



PLAY EQUIPMENT - CONNECTIONS



PLAY EQUIPMENT - SLIDES



PLAY EQUIPMENT - LOOKOUTS



PLAY EQUIPMENT - BRANDING



PLAY EQUIPMENT - SWINGS + SPINNERS



ADULT FITNESS EQUIPMENT OPTIONS



CRUNCH/LEG LIFT



ASSISTED ROW/PUSH-UP



PEG BRIDGE



ROPE CLIMBER



VERTICAL NET



BALANCE BEAM

MULTI-SPORT GOALS



LARGE



SMALL



ARGENZIANO SCHOOLYARD

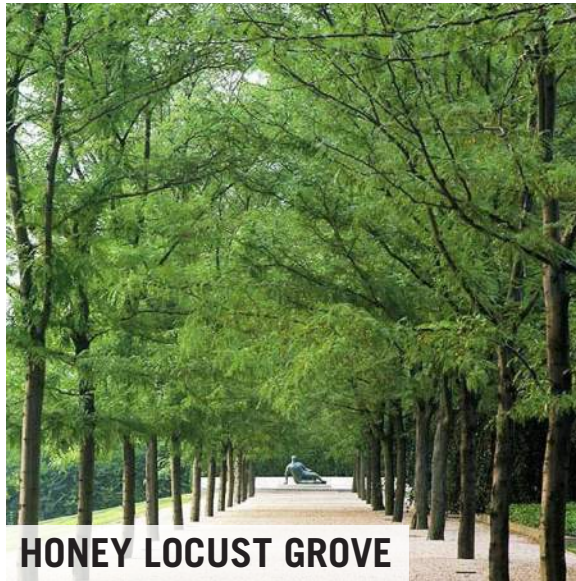
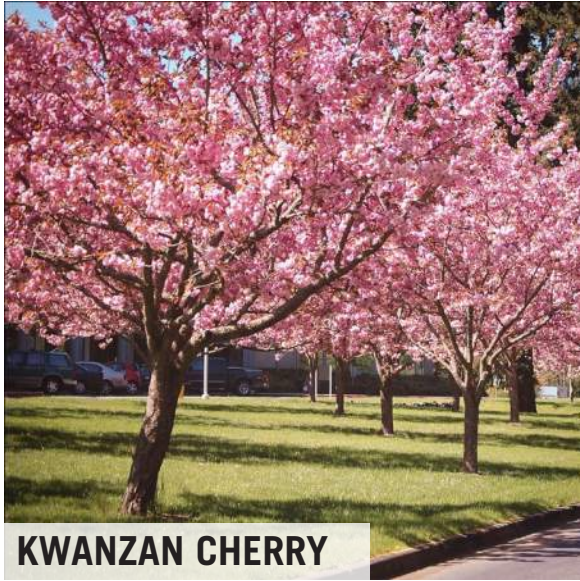


ALBION PARK

SITE FURNISHINGS



PLANTING PALETTE



SCHOOLYARD PLAN - PHASING



PHASE 1: SCHOOLYARD, TOT-LOT AND INTERSECTION IMPROVEMENTS

- **PLAY EQUIPMENT: MAIN STRUCTURE, SWINGS, SPINNER**
- **MULTI-USE SHELTER**
- **TRIKE PATH**
- **BASKETBALL AND MULTI-SPORT COURTS**
- **ADULT FITNESS ZONE**
- **PASSIVE PLAZA**

PHASE 2: FIELD

- **SYNTHETIC TURF SOCCER FIELD AND TRACK**
- **SPECTATOR SEATING**
- **ACCESSIBLE RAMP TO SHA**

NEXT STEPS

2019

JULY 9TH, 2019: COMMUNITY MEETING #2

JULY 2019: DESIGN DEVELOPMENT OF SCHOOLYARD

JULY/AUGUST 2019: RENOVATION OF 2-5 PLAYGROUND

OCTOBER 2019: ADDITIONAL COMMUNITY MEETING #3 PLANNED

NOVEMBER 2019: COMMUNITY MEETING #4 - PRESENT FINAL DESIGN FOR MAIN SCHOOLYARD

DECEMBER 2019: CONSTRUCTION DOCUMENTS FOR SCHOOLYARD

2020

JANUARY 2020: BID FOR SCHOOLYARD

SPRING 2020: CONSTRUCTION BEGINS FOR SCHOOLYARD

FALL 2020: CONSTRUCTION COMPLETE FOR SCHOOLYARD

WINTER 2020: BID RELEASED FOR FIELD AND PATH CONSTRUCTION

2021

SPRING 2021: FIELD AND PATH CONSTRUCTION STARTS

SUMMER 2021: FIELD CONSTRUCTION COMPLETE

CONTACT

ARN FRANZEN

DIRECTOR OF PARKS AND OPEN SPACE
OFFICE OF STRATEGIC PLANNING AND COMMUNITY DEVELOPMENT
afranzen@somervillema.gov
617.625.6600 ext 2545