

Basement Sq Ft = 606 sqft gross

① Basement Existing  
3/16" = 1'-0"

Garrett Construction  
14 Bradley St  
Somerville Ma

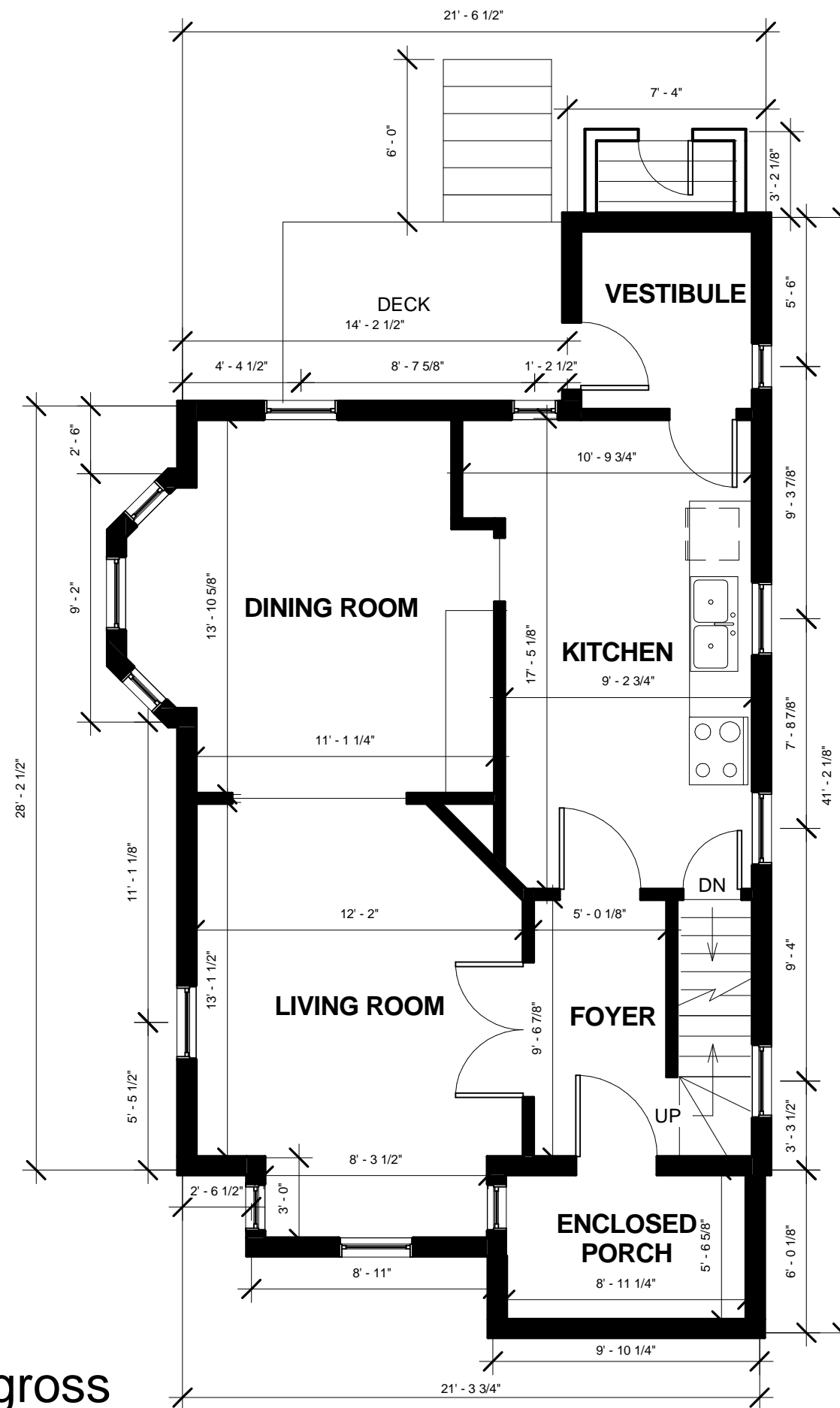
Basement Plan Existing

No.	Description	Date

Drawn By: Author  
Check By: Checker  
Project #: 2015-12  
Scale 3/16" = 1'-0"

A001-E





1st Floor Sq Ft = 698 sqft gross

① First Floor Existing  
3/16" = 1'-0"

**Garrett Construction**  
14 Bradley St  
Somerville Ma

First Floor Plan Existing

No.	Description	Date

Drawn By: Author

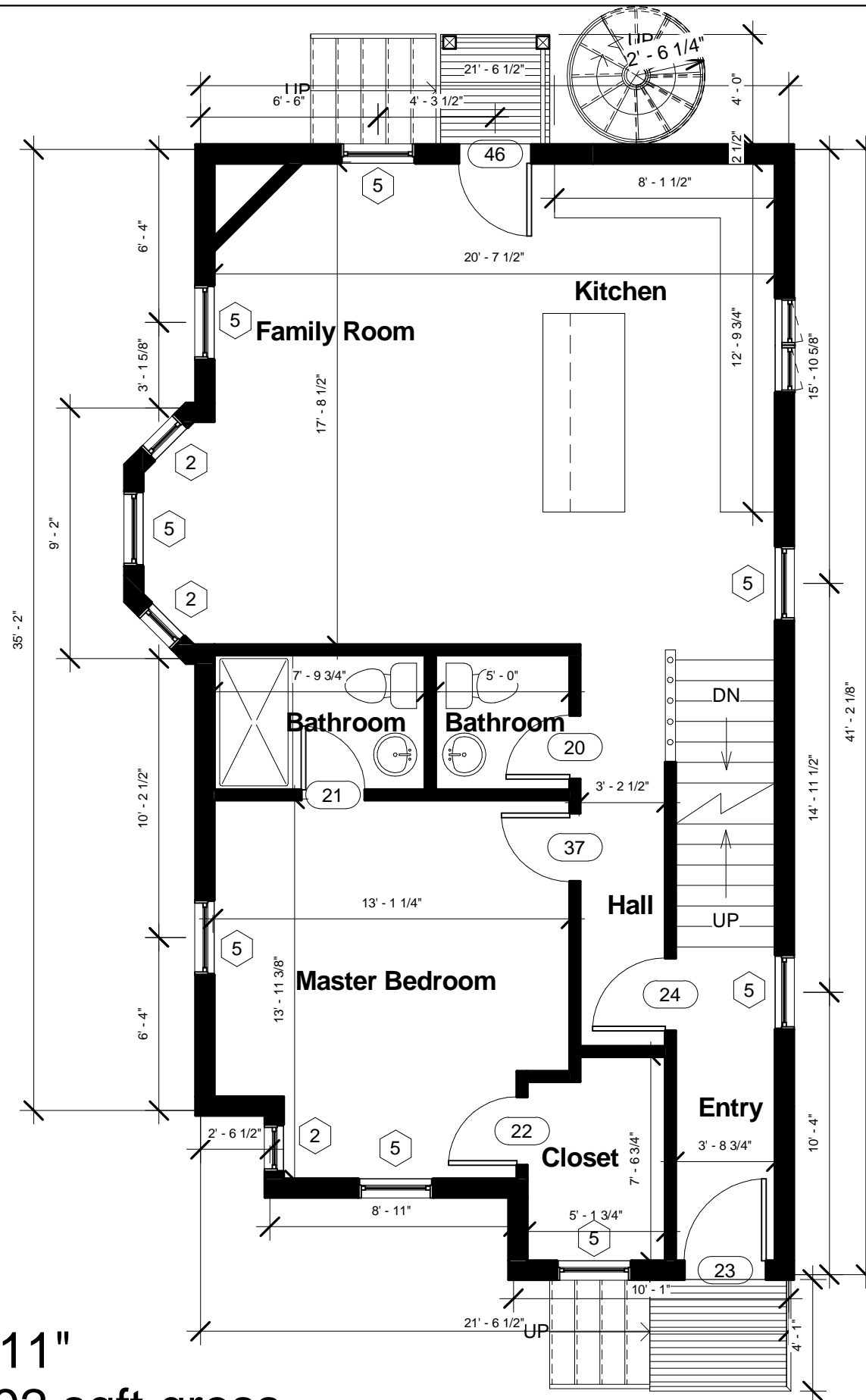
Check By: Checker

Project #: 2015-12

Scal 3/16" = 1'-0"

e

**A101-E**



Ceiling Height = 8' 11"  
1st Floor Sq Ft = 792 sqft gross  
1st Floor Sq Ft = 657 sqft net

① First Floor Proposed  
3/16" = 1'-0"

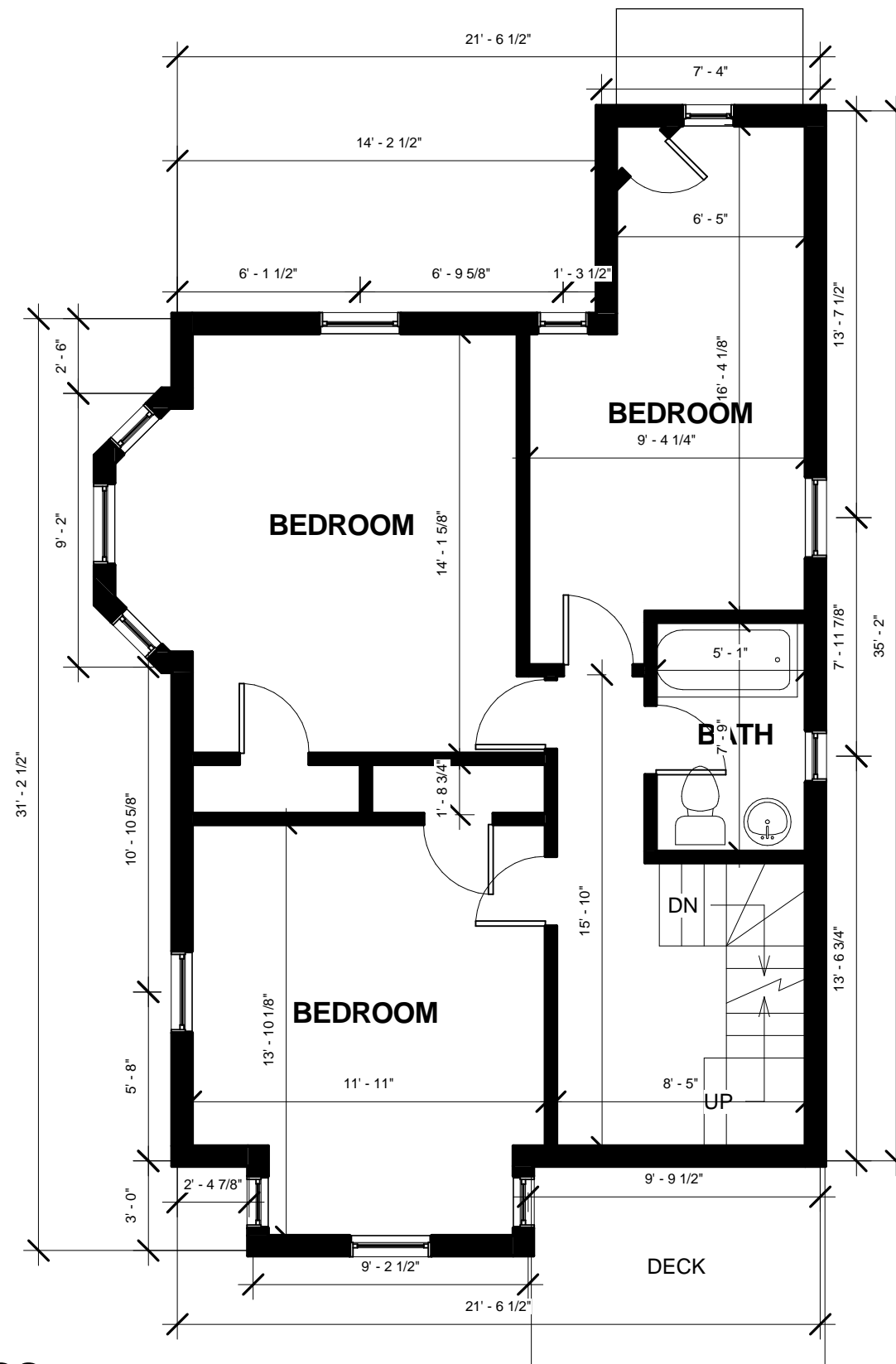
**Garrett Construction**  
14 Bradley St  
Somerville Ma

First Floor Plan Proposed

No.	Description	Date

Drawn By: Author  
Check By: Checker  
Project #: 2015-12  
Scal 3/16" = 1'-0"

**A101-P**



2nd Floor Sq Ft = 641 sqft gross

① Second Floor Existing  
3/16" = 1'-0"

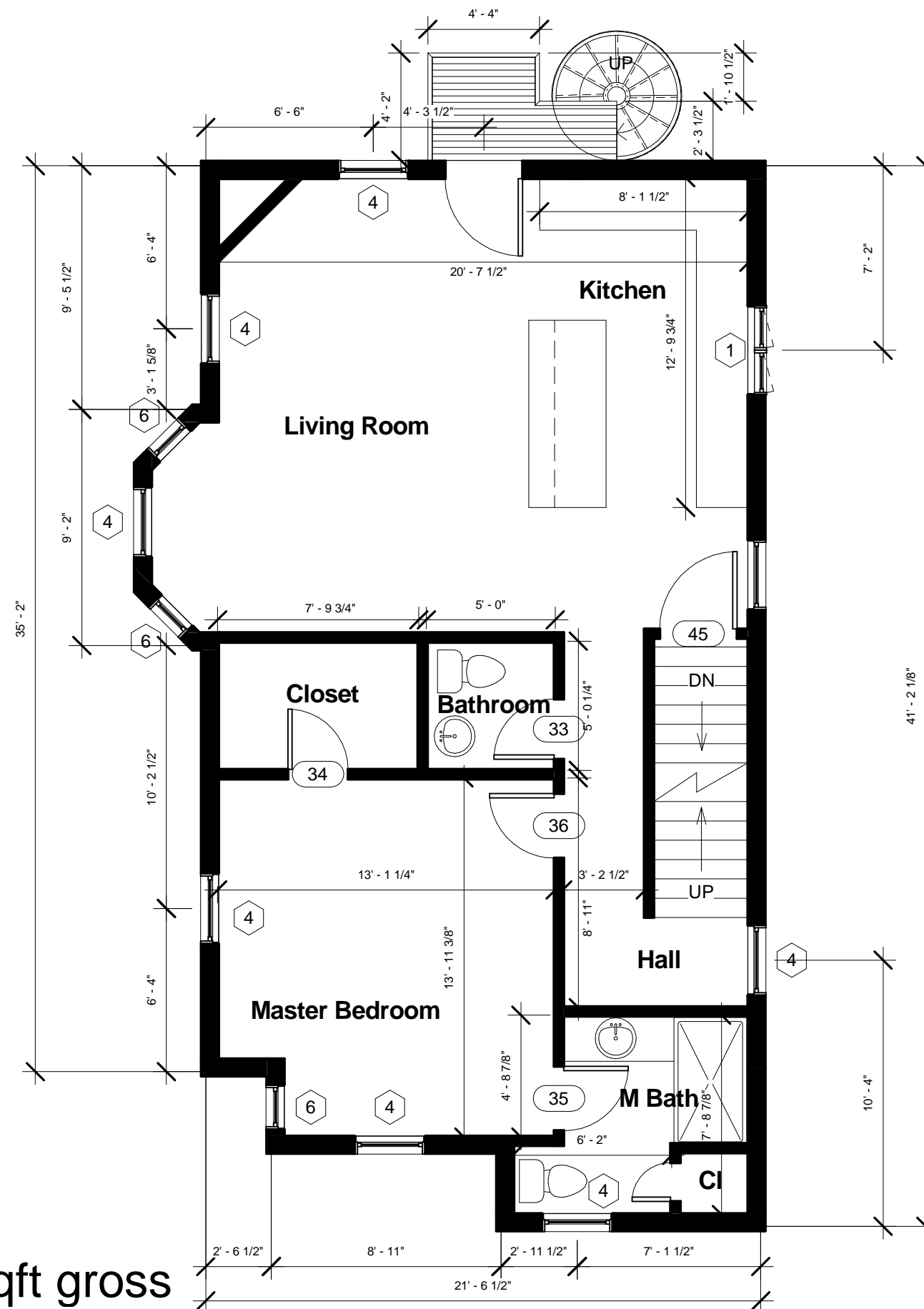
Garrett Construction  
14 Bradley St  
Somerville Ma

Second Floor Plan Existing

No.	Description	Date

Drawn By: Author  
Check By: Checker  
Project #: 2015-12  
Scal 3/16" = 1'-0"

A201-E



Ceiling Height = 8' 6"  
2nd Floor Sq Ft = 792 sqft gross  
2nd Floor Sq Ft = 683 sqft net

① Second Floor Proposed  
3/16" = 1'-0"

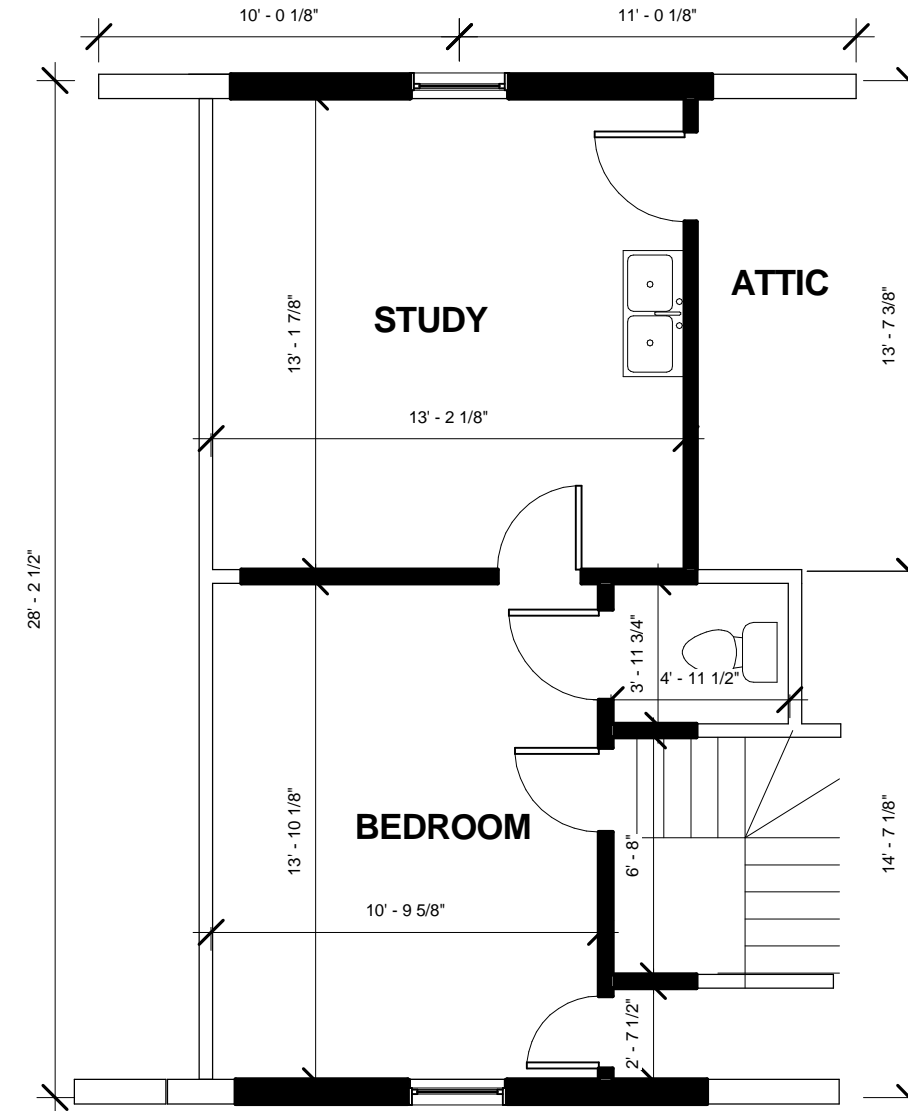
**Garrett Construction**  
14 Bradley St  
Somerville Ma

Second Floor Proposed

No.	Description	Date

Drawn By: Author  
Check By: Checker  
Project #: 2015-12  
Scale 3/16" = 1'-0"

**A201-P**



3rd Floor Sq Ft = 321 sqft gross

① Third Floor Existing  
3/16" = 1'-0"

**Garrett Construction**  
14 Bradley St  
Somerville Ma

Third Floor Plan Existing

No.	Description	Date

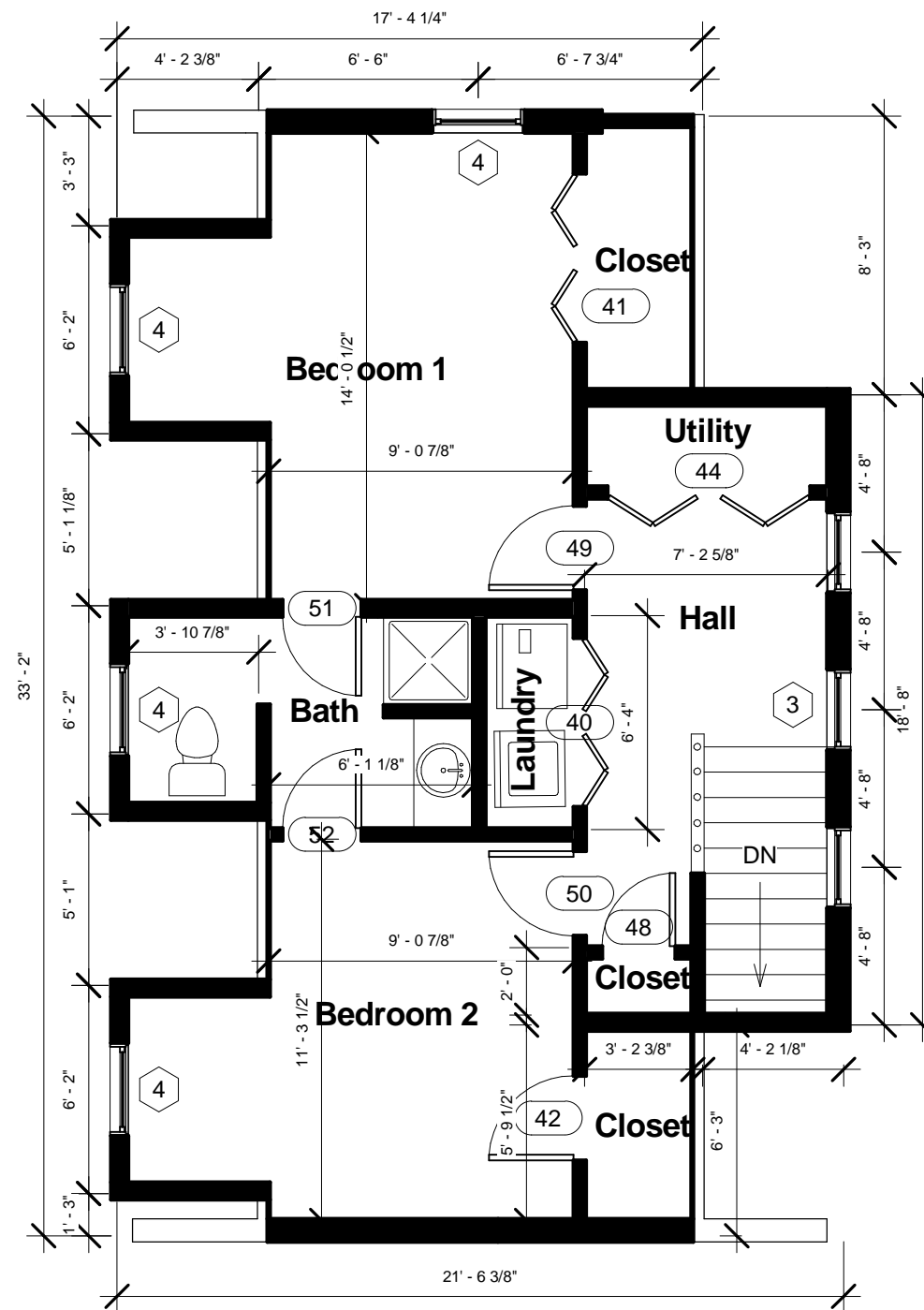
Drawn By: Author

Check By: Checker

Project #: 2015-12

Scale 3/16" = 1'-0"

**A301-E**



**Garrett Construction**  
14 Bradley St  
Somerville Ma

Third Floor Plan Proposed

Ceiling Height = 7' 6"  
3rd Floor Sq Ft = 541 sqft gross  
3rd Floor Sq Ft = 464 sqft net

① Third Floor Proposed  
3/16" = 1'-0"

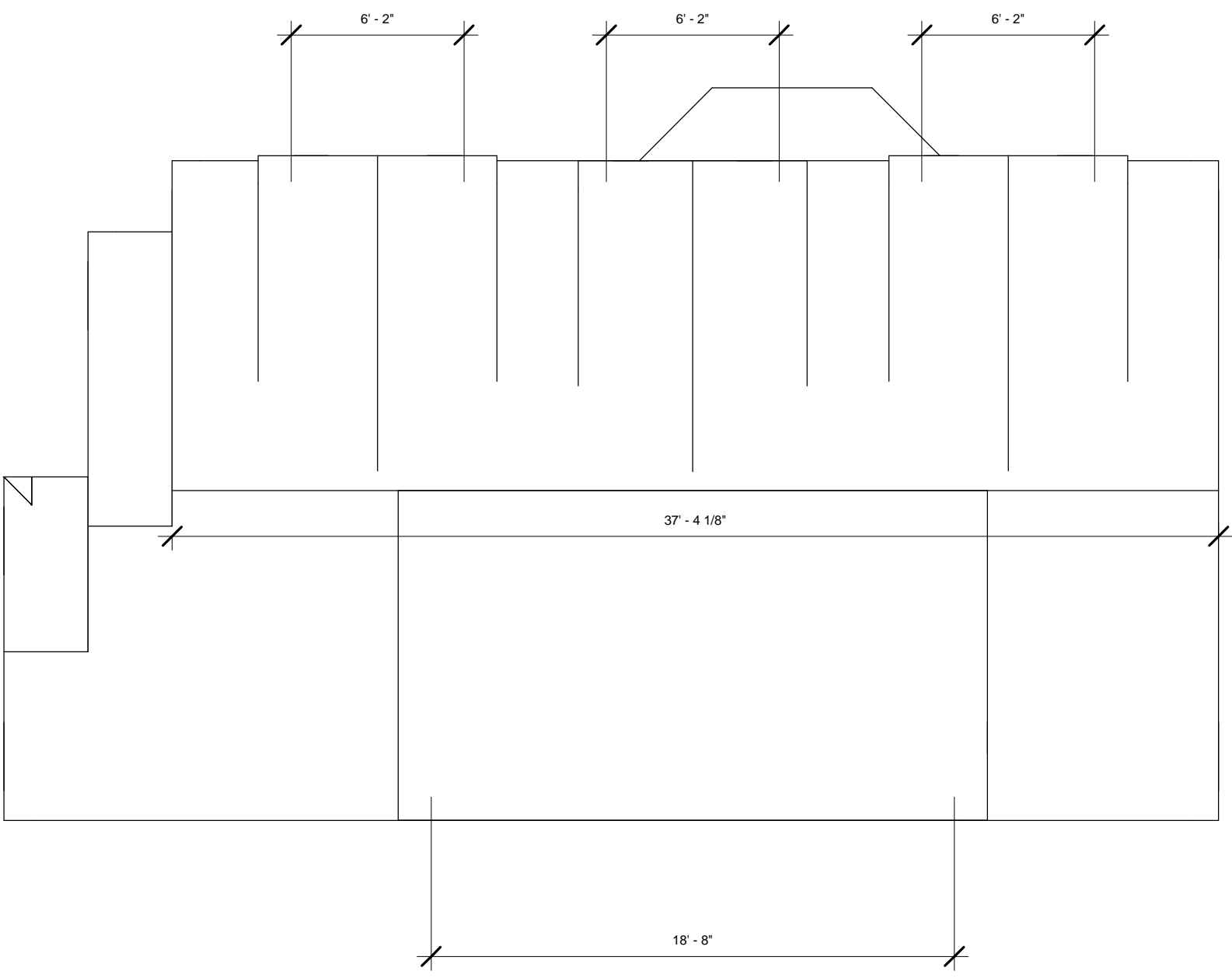
No.	Description	Date

Drawn By: Author  
Check By: Checker  
Project #: 2015-12  
Scale: 3/16" = 1'-0"

**A301-P**



Dormer Calculation Gable Dormers:  
 Total Ridge Length = 37'4"  
 Total Dormer Lengths = 18'6"  
 Percentage Dormer/Ridge = 49.5%



Dormer Calculation Shed Dormer:  
 Total Ridge Length = 37'4"  
 Total Dormer Lengths = 18'8"  
 Percentage Dormer/Ridge = 50.0%

**Garrett Construction**  
 14 Bradley St  
 Somerville Ma

Roof Plan

No.	Description	Date
	Drawn By: Author	
	Check By: Checker	
	Project #: 2015-12	
	Scal 3/16" = 1'-0"	
A401		



**PROPOSED**

**EXISTING**

① North  
1/8" = 1'-0"

**Garrett Construction**  
14 Bradley St  
Somerville Ma

**North Elevation**

No.	Description	Date

Drawn By: Author

Check By: Checker

Project #: 2015-12

Scale 1/8" = 1'-0"

**A501**

Garrett Construction  
14 Bradley St  
Somerville Ma

South Elevation



EXISTING

PROPOSED

① South  
1/8" = 1'-0"

No.	Description	Date

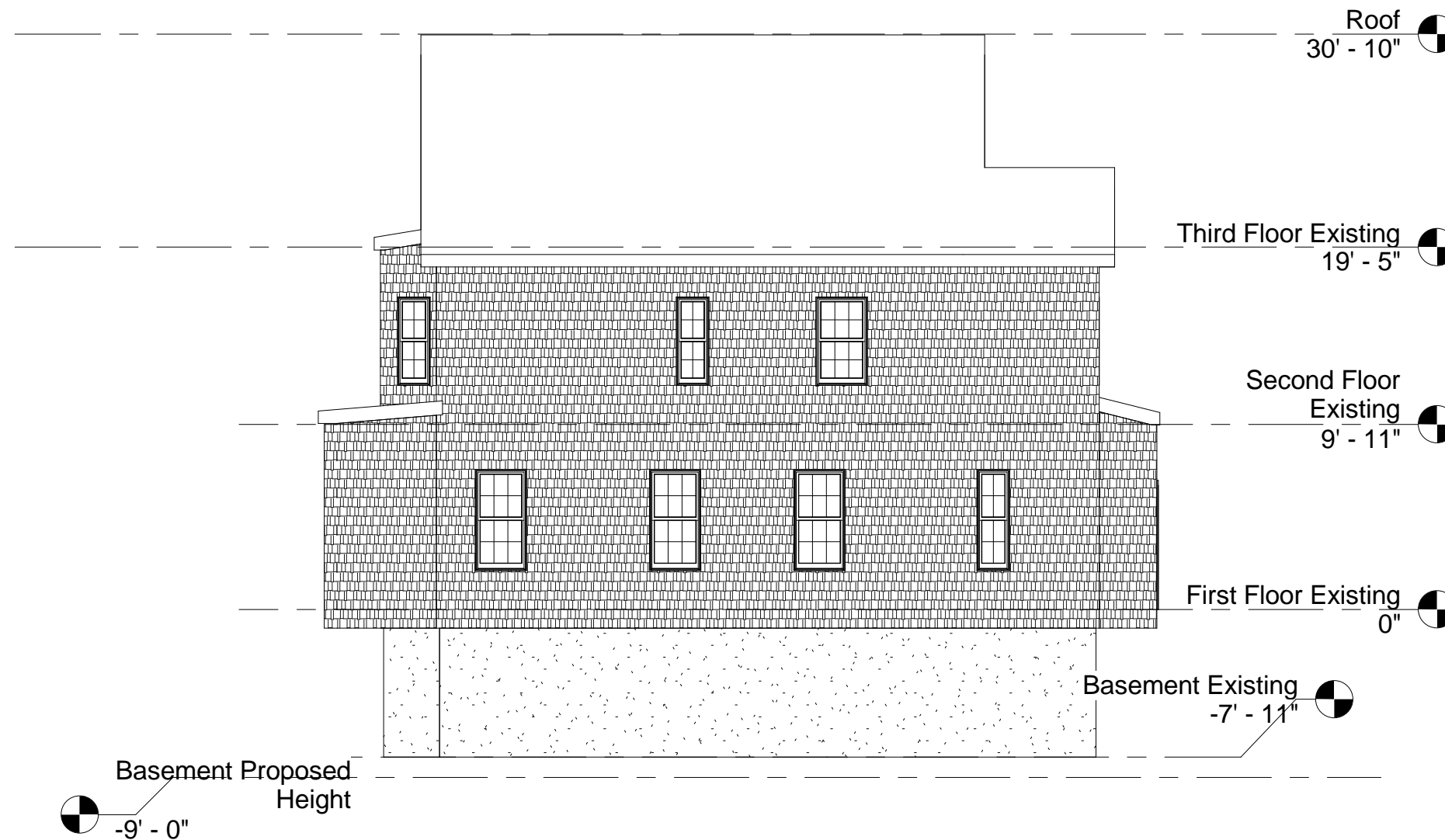
Drawn By: Author

Check By: Checker

Project #: 2015-12

Scale 1/8" = 1'-0"

e  
**A502**



① East Existing  
1/8" = 1'-0"

Garrett Construction

14 Bradley St  
Somerville Ma

East Elevation Existing

No.	Description	Date

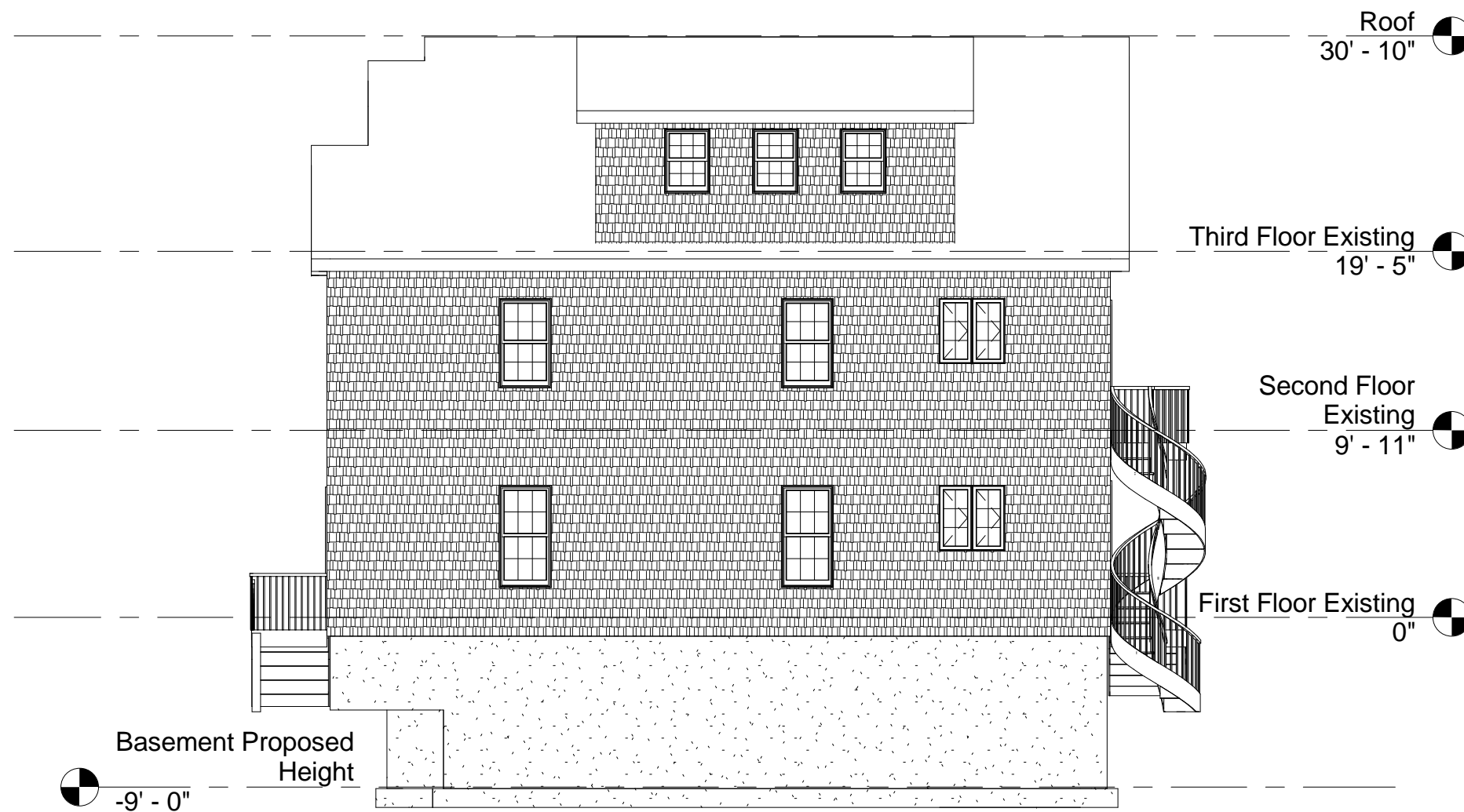
Drawn By: Author

Check By: Checker

Project #: 2015-12

Scale 1/8" = 1'-0"

e  
**A503-E**



① East Proposed  
1/8" = 1'-0"

Garrett Construction  
14 Bradley St  
Somerville Ma

East Elevation Proposed

No.	Description	Date

Drawn By: Author

Check By: Checker

Project #: 2015-12

Scal 1/8" = 1'-0"

e

**A503-P**



① West Existing  
1/8" = 1'-0"

Garrett Construction  
14 Bradley St  
Somerville Ma

West Elevation Existing

No.	Description	Date

Drawn By: Author

Check By: Checker

Project #: 2015-12

Scale 1/8" = 1'-0"

e  
**A504-E**



Garrett Construction  
14 Bradley St  
Somerville Ma

West Elevation Proposed

No.	Description	Date

Drawn By: Author

Check By: Checker

Project #: 2015-12

Scale 1/8" = 1'-0"

e

**A504-P**

① West Proposed  
1/8" = 1'-0"

