

Central Hill Parking Zone Update



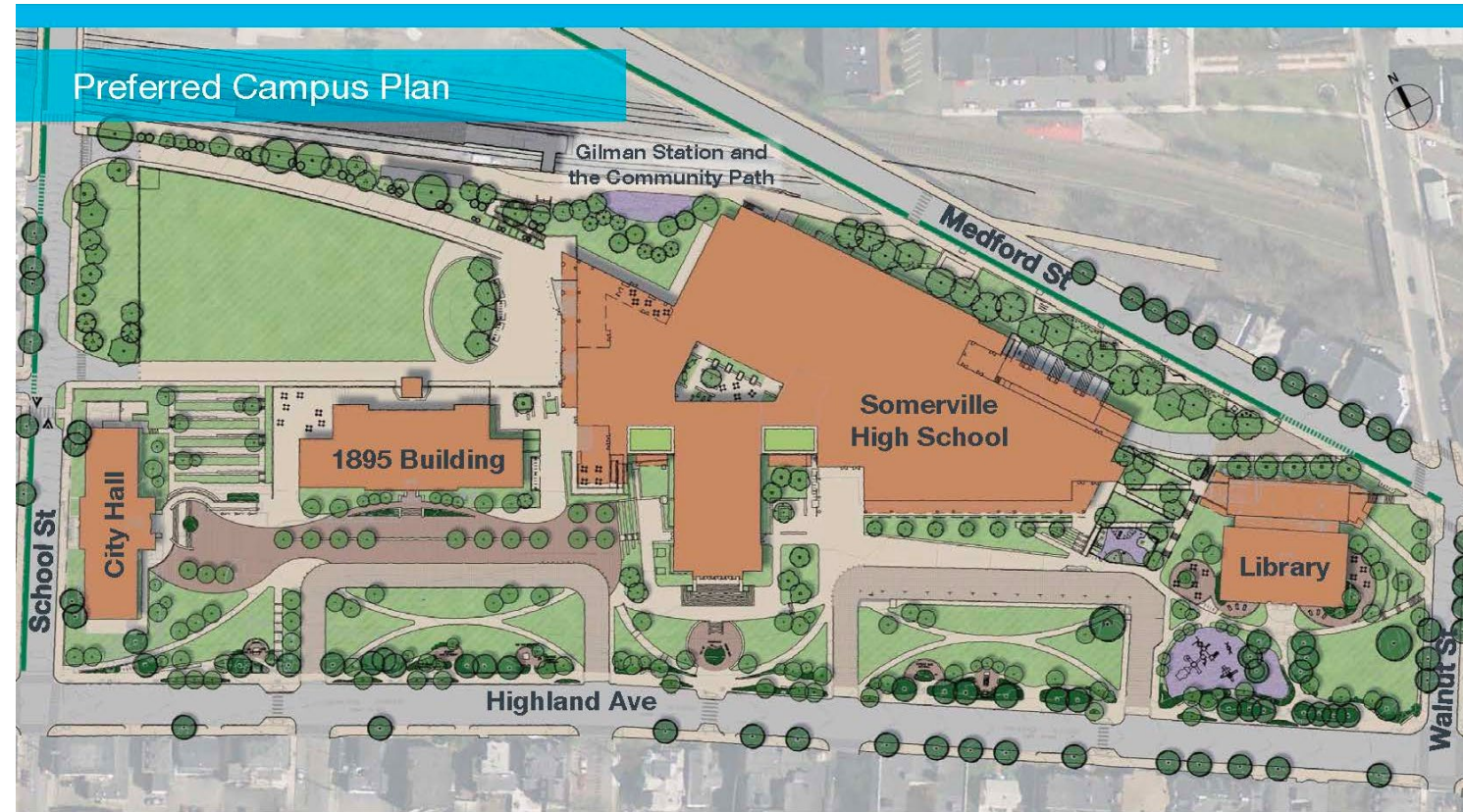
TRAFFIC COMMISSION 12/08/2022

Central Hill Campus Plan Background

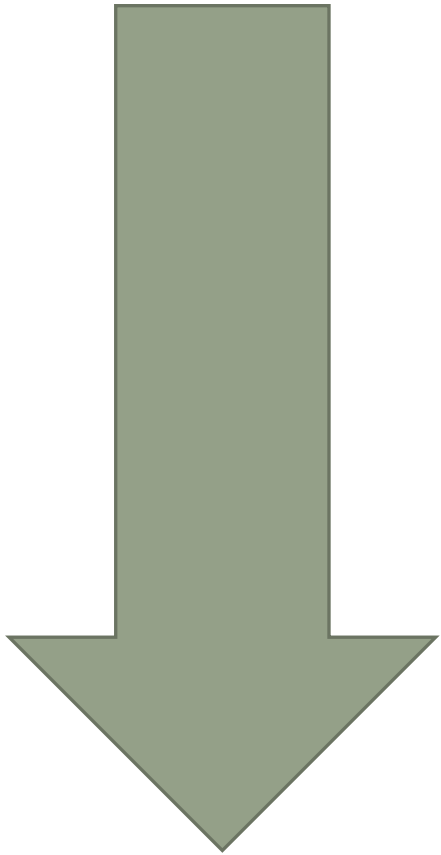
With construction of the new Somerville High School and Central Hill campus, a majority of the on-site surface parking on the campus was replaced with public open space and recreation space.

City convened a working group of stakeholders and held a series of public meetings to gather input and share information about managing mobility and parking resources and addressing challenges.

City completed two parking studies to examine the impacts of the SHS/Central Hill parking changes in 2017 and 2018.



Pilot Timeline



11/18/2021: Pilot Approved by Traffic Commission

01/24/2022: Signs installed

02/24/2022: Public Hearing by Traffic Board

12/8/2022: Informational Update to Traffic Commission

01/23/2023: End of One-Year Pilot

Pilot Objectives

Respond to stakeholder concerns that curb management around Central Hill had become unpredictable and unpleasant for all users – residents, workforce, visitors.

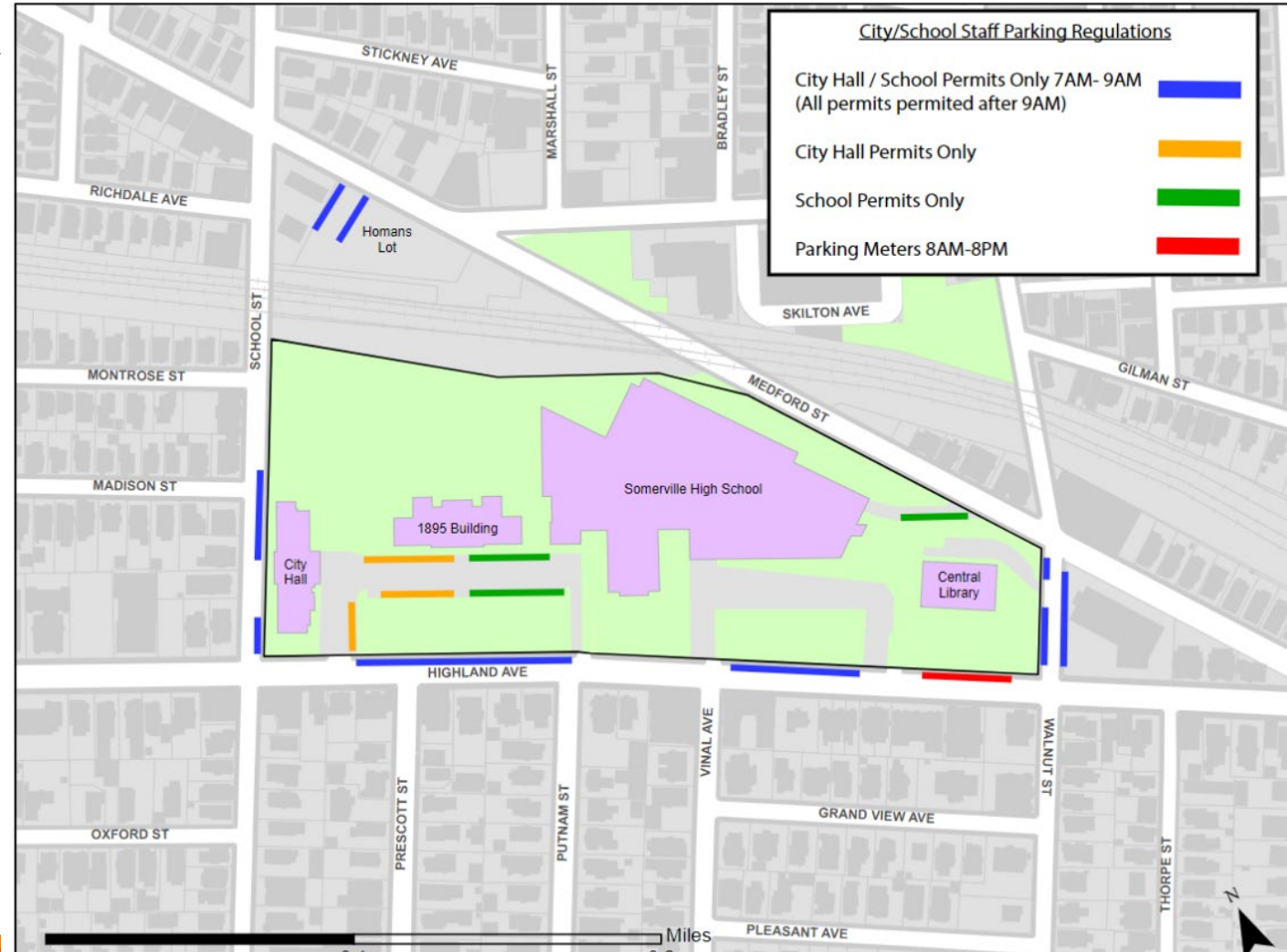
Determine whether City could help reduce parking conflicts by providing time-limited, priority parking on arterial streets for municipal / school workforce.

Collect data on changing curb use patterns in weekday and overnight time periods.

Pilot Regulations

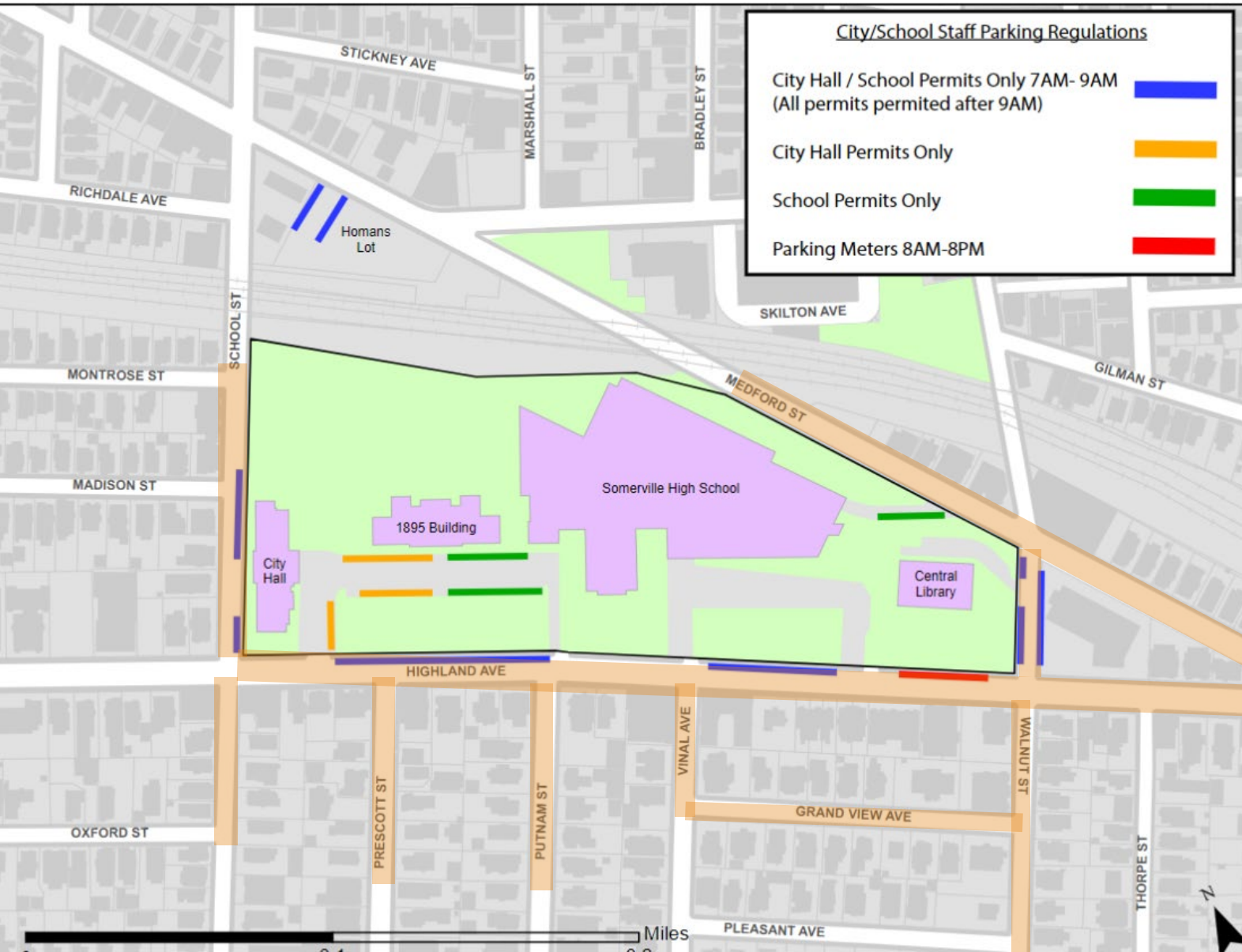
“City Hall or School Permit” Parking Only

- These regulations apply:
 - 7am-9am only Mon-Fri
 - Highland Ave (north side)
 - School St (east side)
 - Walnut St (both sides)



Data Collection Methodologies

- Inventoried parking capacity within pilot zone and surrounding streets.
- In June 2022 and October 2022, staff walked study area every half hour between 6:00-9:30 AM counting parked vehicles.
- In Winter/Spring and Fall 2022, Parking Control Officers noted number of illegally parked vehicles and number of spaces available in Highland Ave pilot zones between 7:00-8:00 AM.



Data Collection Map

On Street Parking Surveyed

Pilot Key Findings

- **Pilot regulations are being used as intended**
 - Average 86% pilot capacity utilization between 8:30-9:00 AM
 - School only spots peak at 97% at 7:00am-7:30am time
 - Highest utilization is for pilot permit spots in concourse and Highland Ave
- **Resident parking is available overnight**
 - Average 27.5% space availability for resident parking before 6:30 AM on streets including Walnut, Prescott, Medford, Highland and more

PCO Compliance Findings

Weekday morning observations of City/School permit spaces on Highland Ave (between 7:00-7:40am)

Compliance increased through duration of pilot:

- Winter/Spring 2022 (2/24-6/1):
 - 3 open spaces
 - 1 ticketed
- Fall 2022 (9/7-9/27):
 - 3 open spaces
 - 0.5 ticketed

Pilot Regulation Utilization

	School and City Permit Parking						
	6:00-6:30	6:30- 7:00	7:00-7:30	7:30- 8:00	8:00-8:30	8:30- 9:00	9:00-9:30
Tuesday June 7th	14%	NA	44%	59%	72%	80%	84%
Thursday June 16th	NA	28%	47%	67%	74%	87%	91%
Tuesday October 4th	22%	40%	67%	72%	80%	91%	91%

Resident Regulation Utilization

	Resident and General Permit Parking						
	6:00-6:30	6:30- 7:00	7:00-7:30	7:30- 8:00	8:00-8:30	8:30- 9:00	9:00-9:30
Tuesday June 7th	69%	NA	75%	81%	80%	74%	76%
Thursday June 16th	NA	76%	74%	82%	83%	83%	83%
Tuesday October 4th	76%	83%	86%	93%	90%	85%	84%

Efforts to Reduce Parking Demand and Increase Supply

Relocation of bus stop to improve safety, transit operations and gain 2 more RPP parking spaces.

City funded free Transit Passes for SHS Students.

- Expanded free transit passes to all SPS students Grade 7-12 (~2,000 students).

City expanded access to Bluebikes public bike share program.

- City received a grant to expand bike share stations at all city work sites and pilot free bike share memberships for city and school staff.
- This pilot started in Fall 2021 and currently has 170 staff participating (as of 12/1/22).
 - 103 participants are school staff (61%)

Future Opportunities

Add pavement markings to improve efficiency of parking.

Workforce Transit Program

- City continues to study workforce transit options for City and School Staff.

MBTA Green Line Extension (GLX)

- Evaluate usage of GLX for trips to Central Hill destinations.

Community Path Extension (CPX)

- Evaluate usage of CPX for trips to Central Hill destinations.

Parking at School Street / Medford Street

- Street parking restored at School Street / Medford Street bridge construction zone.
- Temporary surface parking lot at Homans Building site may be expanded as GLX construction wraps up.