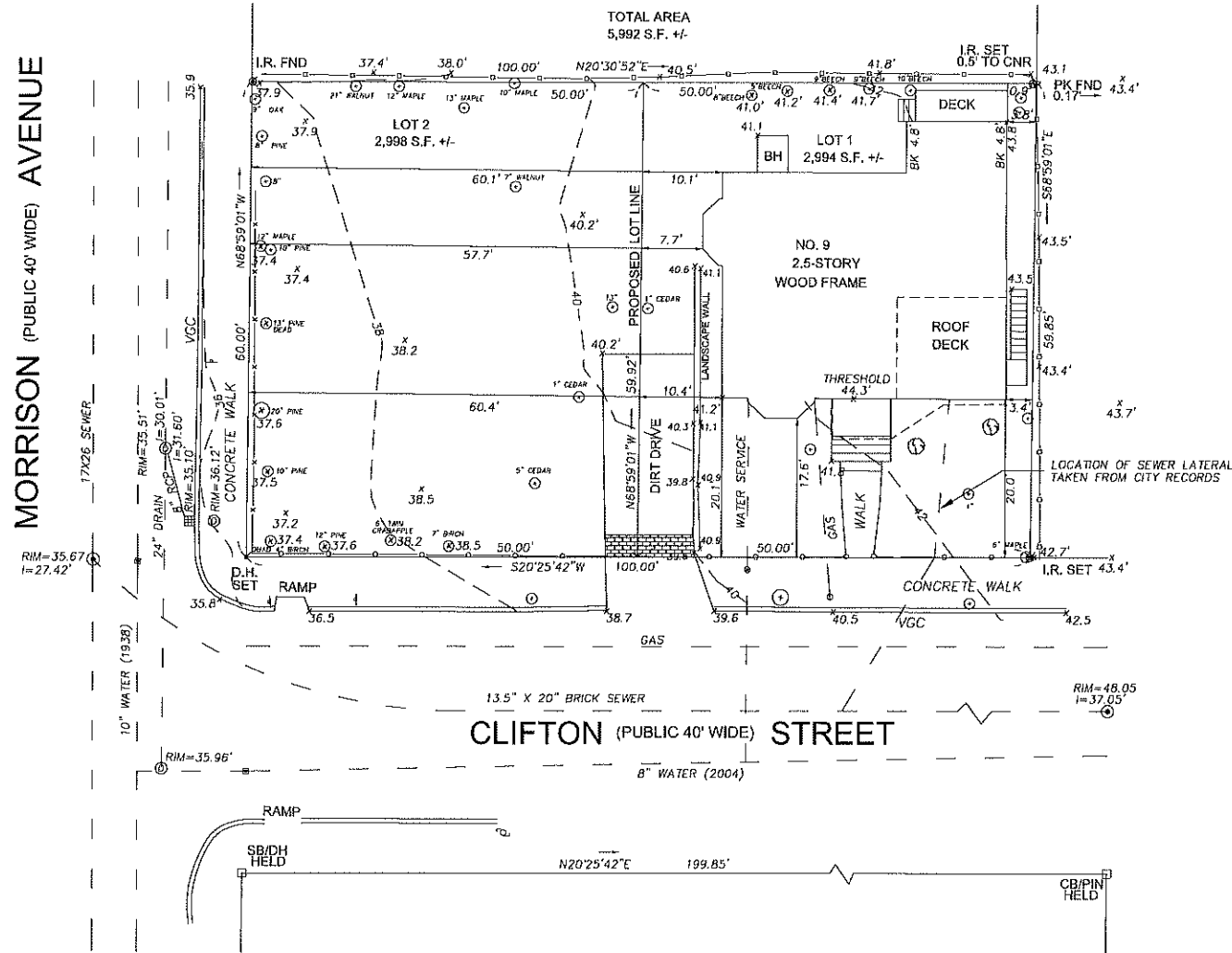
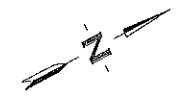


REFERENCES:
 BOOK 27370 PAGE 211
 PLAN BOOK 17 PLAN 92
 ELEVATIONS FROM SOMERVILLE SEWER PLANS

- LEGEND
- ⊗ Water Main Valve
 - ⊕ Water Service/Fire/Hydrant Valve
 - ⊗ Hydrant
 - ☆ LIGHT POST
 - ⊙ TREE
 - ▣ Catch Basin
 - ⊙ Sewer Manhole
 - x23.9 EXISTING GRADE



EXISTING CONDITONS
 FOR
 9 CLIFTON STREET
 IN
 SOMERVILLE, MASS
 PREPARED FOR:
 PLATT ANDERSON FREEMAN ARCHITECTS
 PREPARED BY:
 NEPONSET VALLEY
 SURVEY ASSOC., INC.

95 WHITE STREET
 JULY 14, 2020

QUINCY, MA.
 SCALE 1" = 10'



Stephen P. Desroche
 STEPHEN P. DESROCHE P.L.S. No. 27699

NOTES:
 THE LOCATION OF ALL UNDERGROUND UTILITIES SHOWN ARE APPROXIMATE AND ARE BASED UPON A FIELD SURVEY AND COMPILATION OF RECORD UTILITY PLANS. N.V.S.A., INC. DOES NOT WARRANT NOR GUARANTEE THE LOCATION OF ALL OR ANY OF THE UTILITIES DEPICTED. THE CONTRACTOR SHALL VERIFY THE LOCATION OF ALL UTILITIES BY CONTACTING "BIG SAFE" AT (603) 322-4844 PRIOR TO COMMENCEMENT OF CONSTRUCTION.

