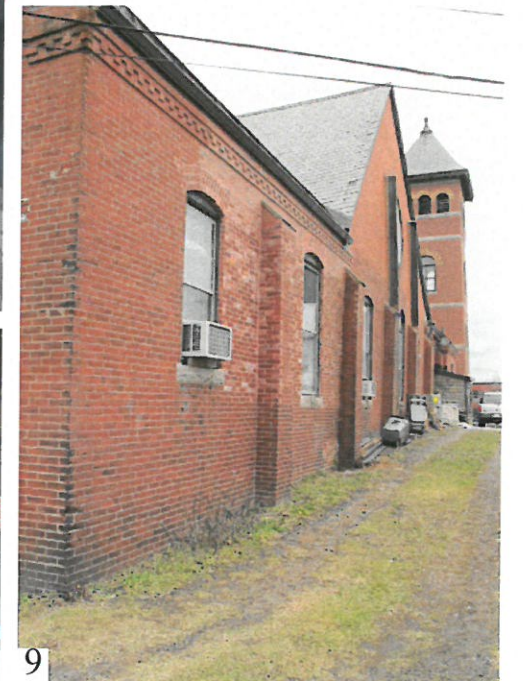
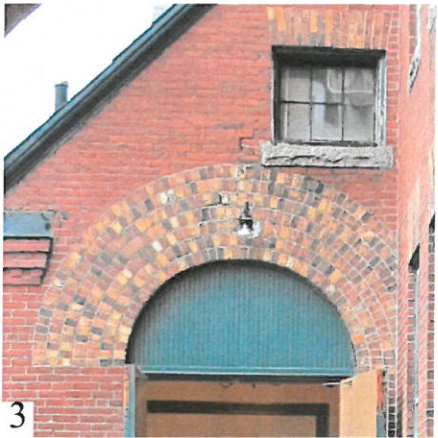
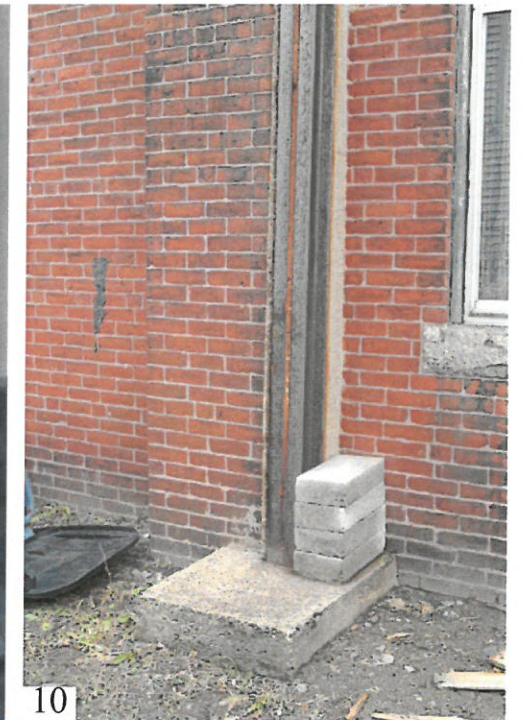
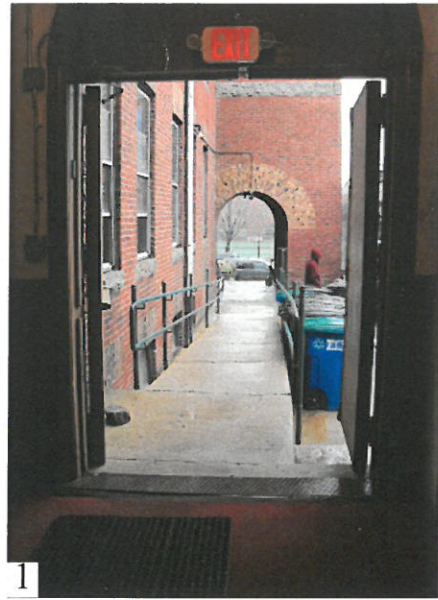


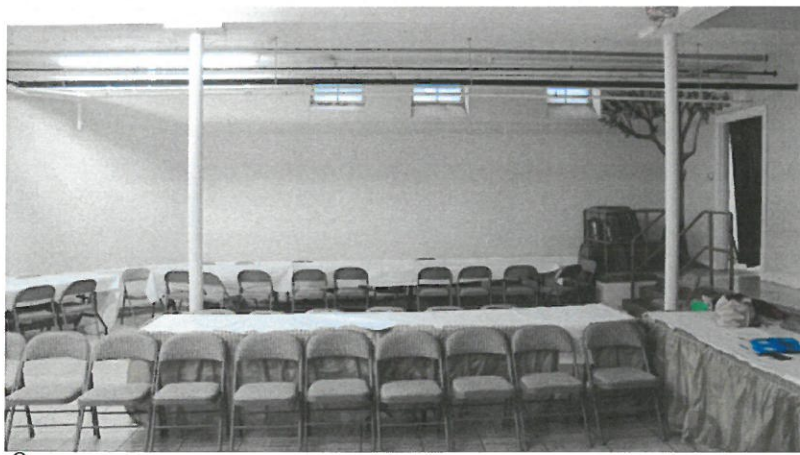
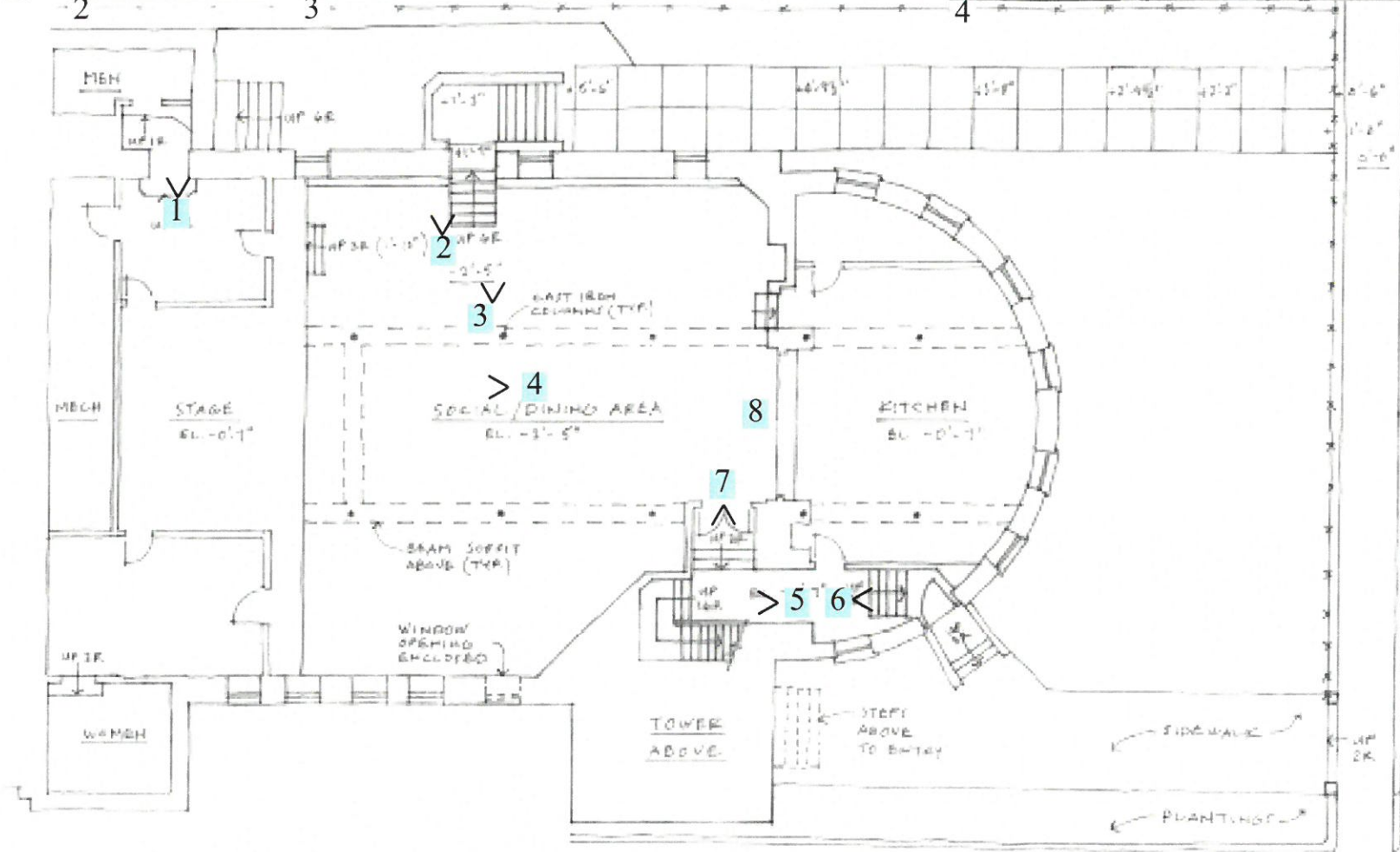
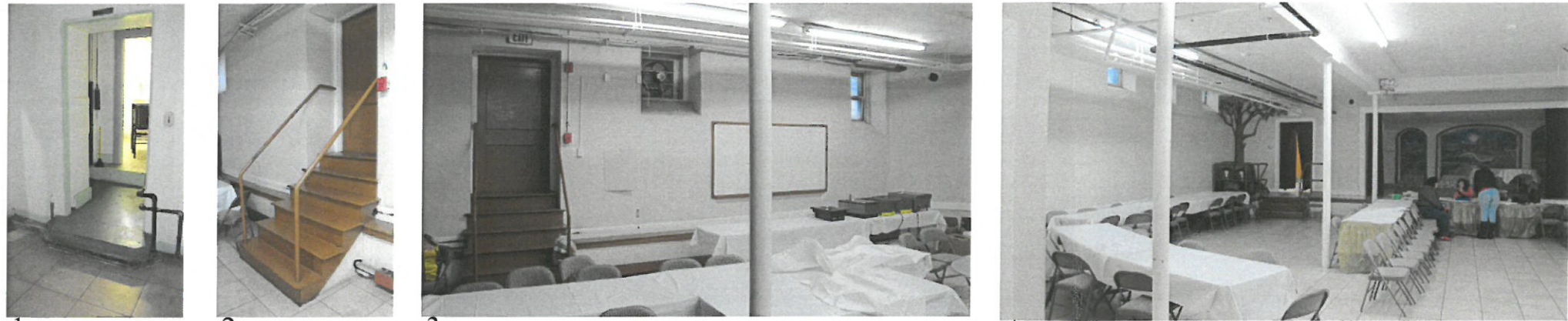
Grace Baptist Church - Existing Exterior Conditions

Somerville Hispanic Association for Community Development



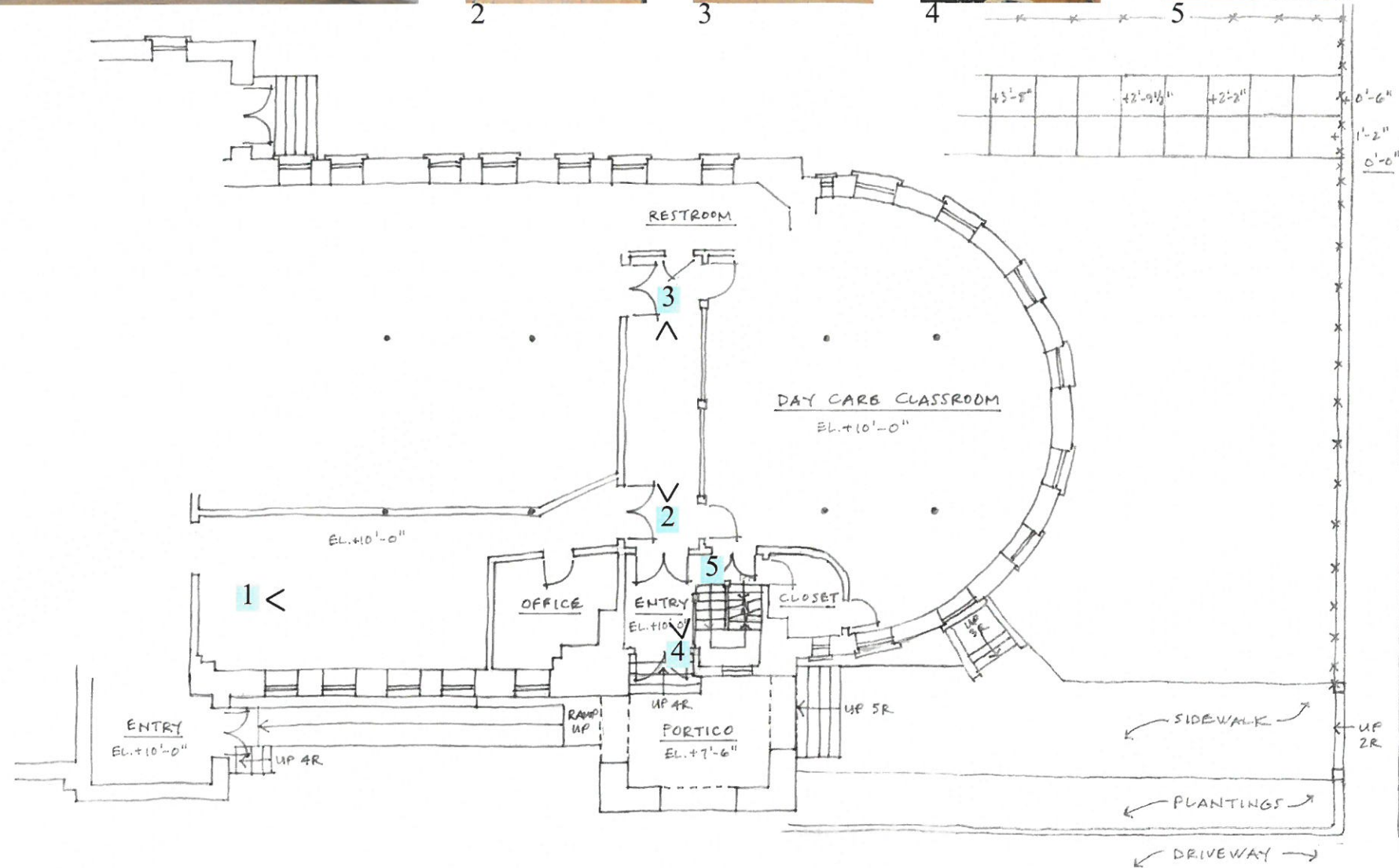
Grace Baptist Church - Existing Exterior Conditions

Somerville Hispanic Association for Community Development

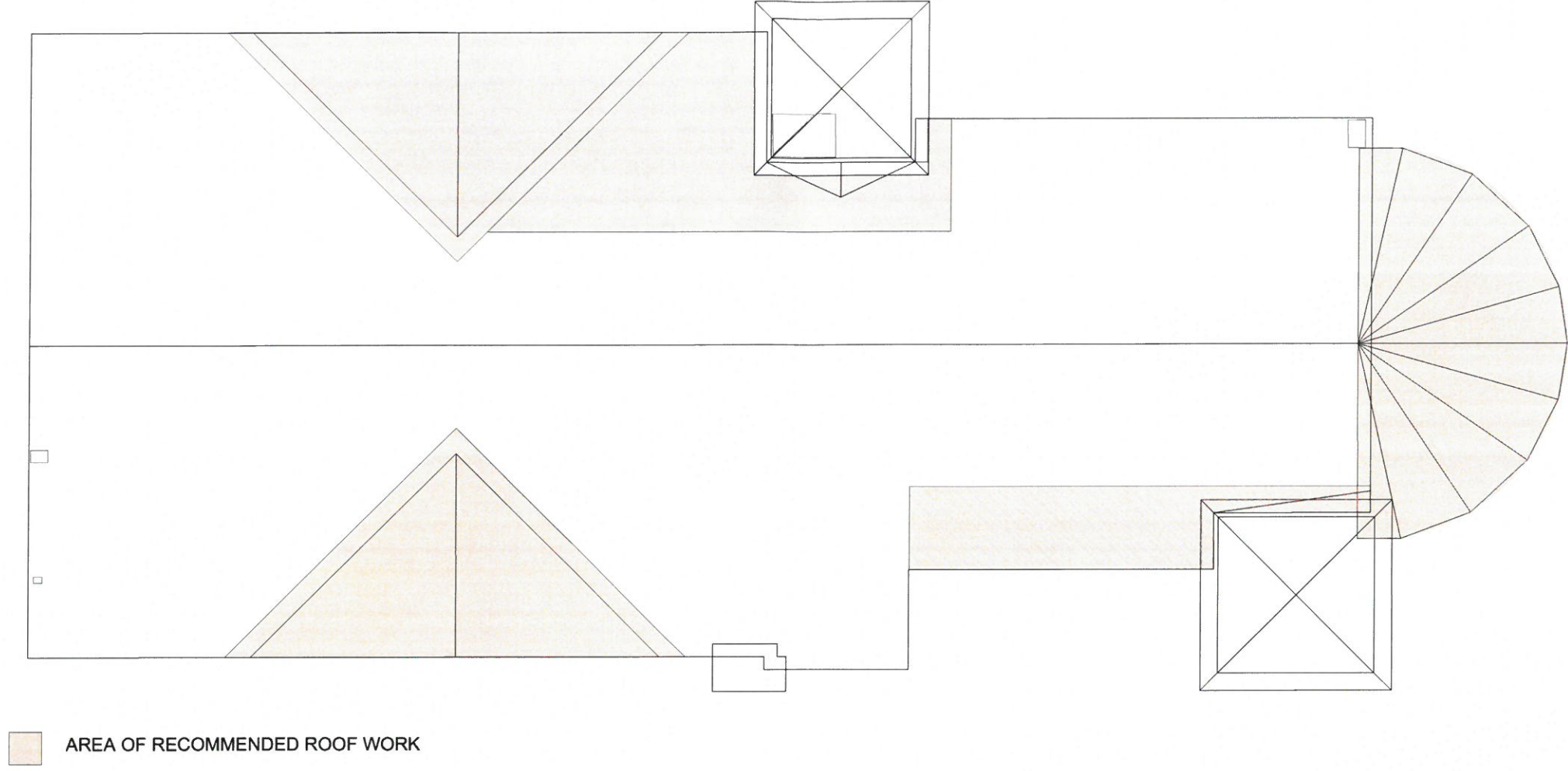
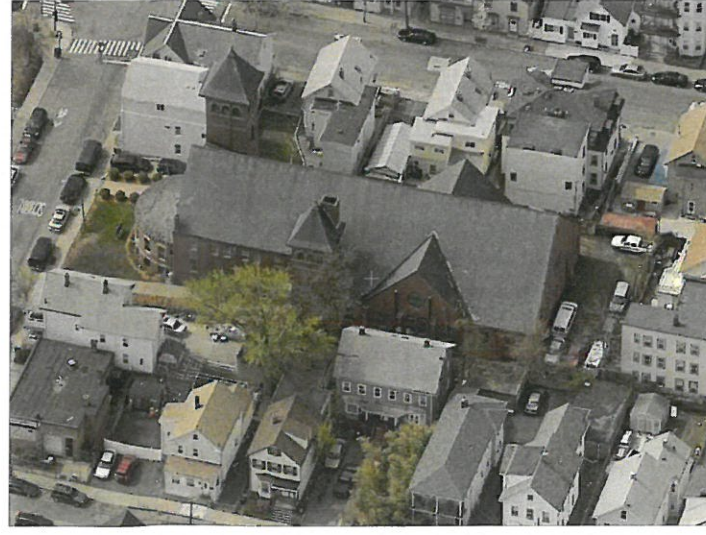


Grace Baptist Church - Existing Exterior Conditions

Somerville Hispanic Association for Community Development



1 ROOF PLAN



AREA OF RECOMMENDED ROOF WORK

A102

Grace Baptist Church - Somerville Hispanic Association
for Community Development
59 CROSS STREET, SOMERVILLE, MA 02145
ROOF PLAN

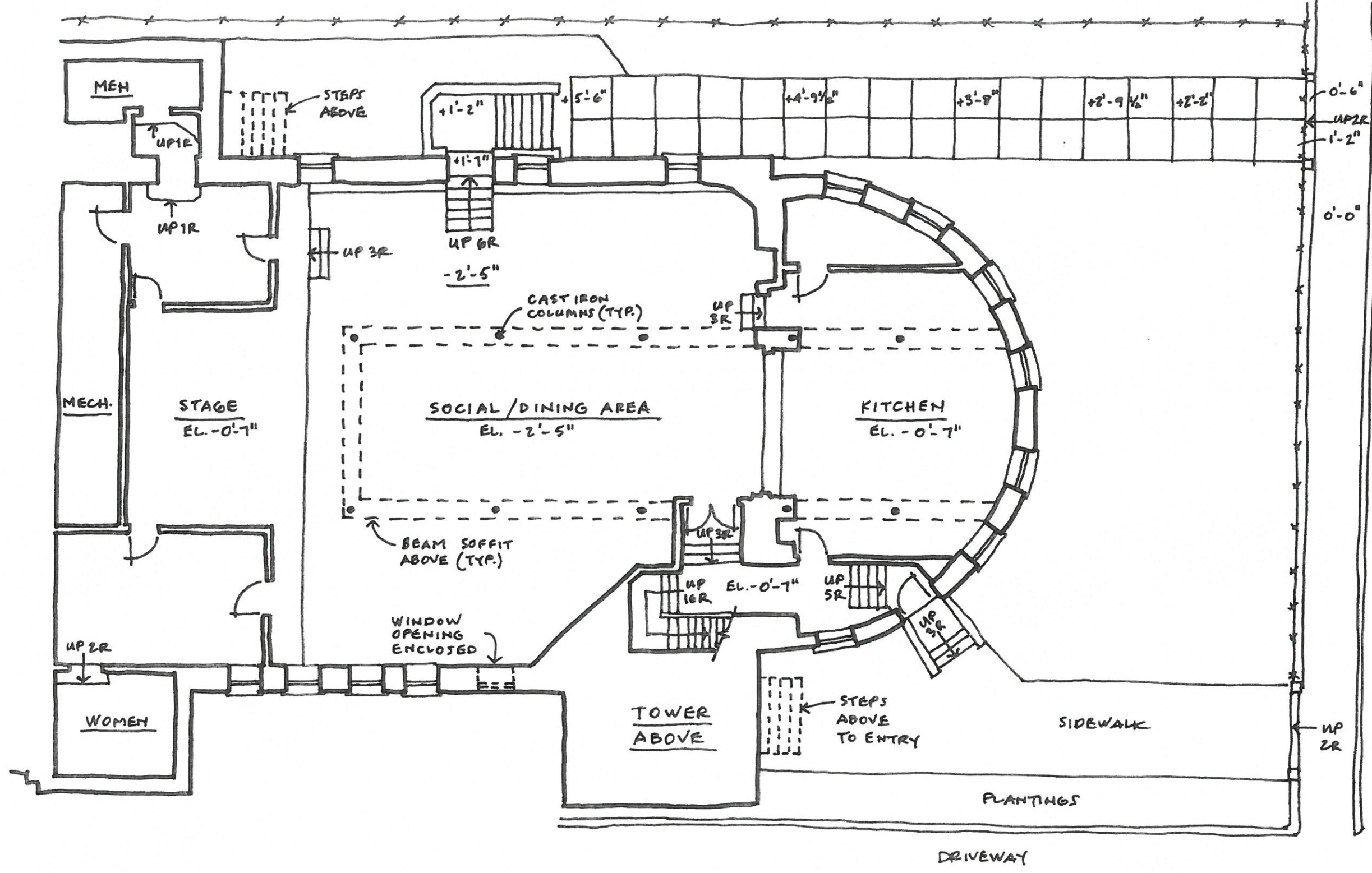
Date: 2017.1.11
Drawn by:
Checked by:
Project Number: 1705.00

ISSUE / REVISIONS:

Consultant:

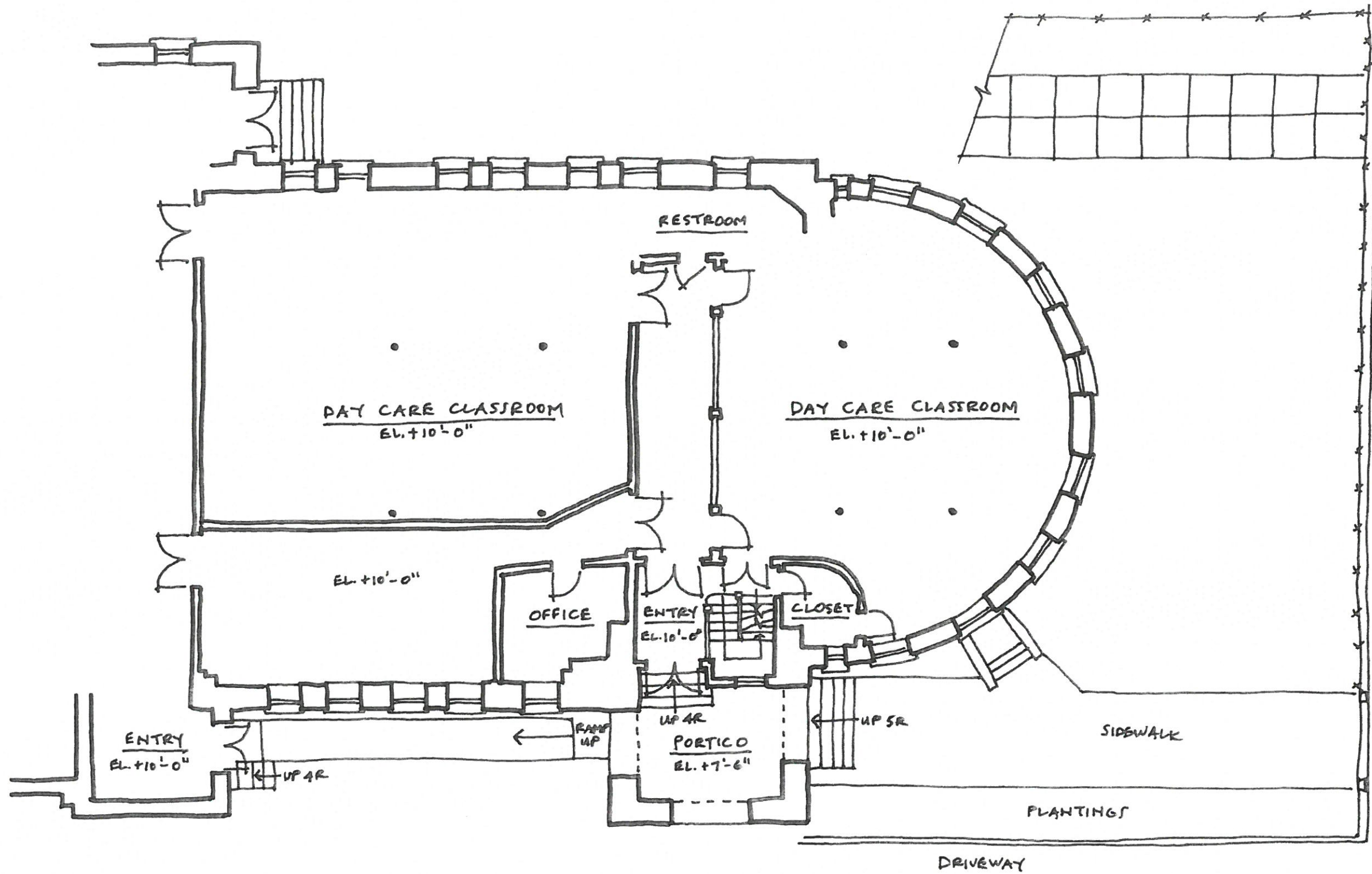
Seal:

Architect:
SPENCER & VOGT GROUP
architecture preservation
1 Thompson Square, Suite 504
Charlestown, MA 02129
617.227.2675
www.spencervogt.com



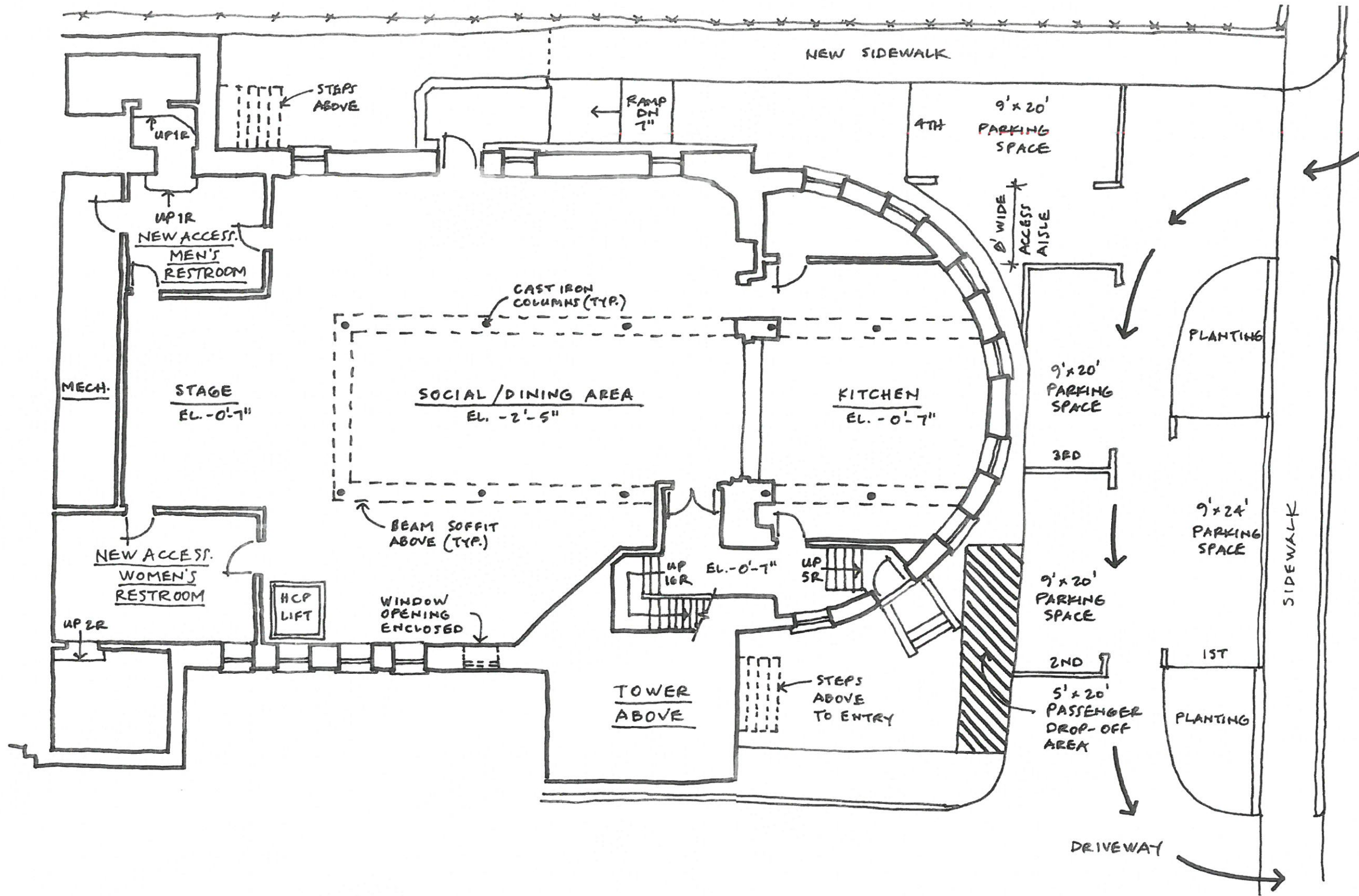
EXISTING BASEMENT PLAN

	Architect: SPENCER & VOGT GROUP architecture preservation	11 Thompson Square, Suite 504 Charlestown, MA 02129 617.721.2875 www.spencervogt.com
	Consultant:	
	Date: Drawn by: Checked by: Project Number:	
Grace Baptist Church - Somerville Hispanic Association for Community Development 59 CROSS STREET, SOMERVILLE, MA 02145		
		EXISTING CONDITIONS PLAN
	EX100	



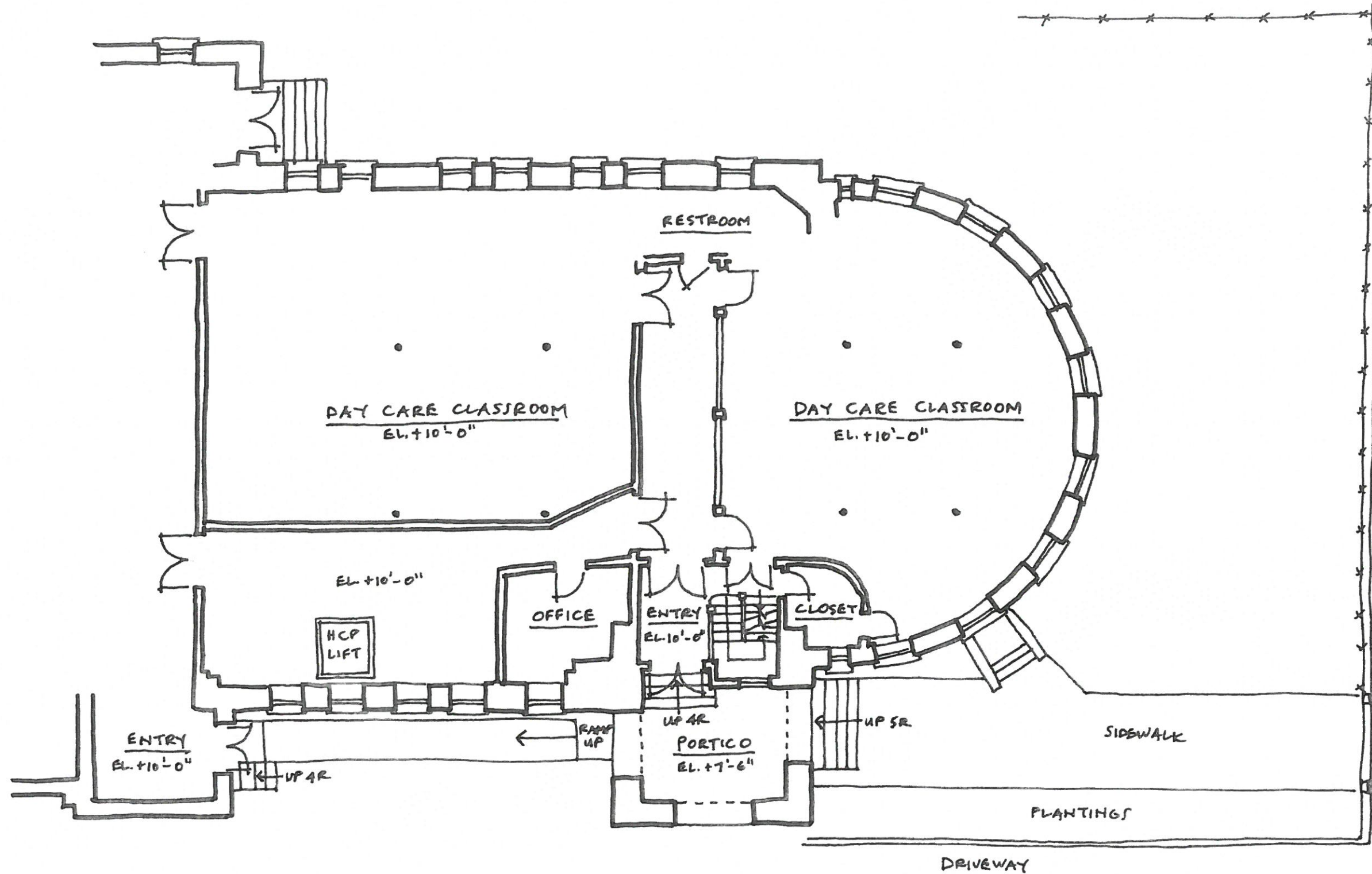
EXISTING FIRST FLOOR PLAN

Architect: SPENCER & VOGT GROUP architecture preservation 11 Thompson Square, Suite 501 Charleston, MA 02129 TEL: 727-2815 www.spencervogt.com	
Seal:	
Consultant:	
ISSUE / REVISIONS:	
Date: Drawn by: Checked by: Project Number:	
Grace Baptist Church - Somerville Hispanic Association for Community Development 59 CROSS STREET, SOMERVILLE, MA 02145	
EXISTING CONDITIONS PLAN	
EX101	



PROPOSED BASEMENT PLAN

Architect: SPENCER & VOGT GROUP architecture preservation 1 Trompson Square, Suite 501 Charlestown, MA 02129 617.271.2815 www.spencervogt.com	
Seal:	
Consultant:	
ISSUE / REVISIONS:	
Date:	
Drawn by:	
Checked by:	
Project Number:	
Grace Baptist Church - Somerville Hispanic Association for Community Development 59 CROSS STREET, SOMERVILLE, MA 02145	
PROPOSED FLOOR PLAN	
A100	



PROPOSED FIRST FLOOR PLAN

<p>Architect: SPENCER & VOGT GROUP architecture preservation</p> <p>1 Trompou Square, Suite 501 Charlestown, MA 02129 617.271.2875 www.spencervogt.com</p>	
Seal:	
Consultant:	
ISSUE / REVISIONS:	
Date:	
Drawn by:	
Checked by:	
Project Number:	
<p>Grace Baptist Church - Somerville Hispanic Association for Community Development 59 CROSS STREET, SOMERVILLE, MA 02145</p>	
<p>PROPOSED FLOOR PLAN</p>	
<p>A101</p>	