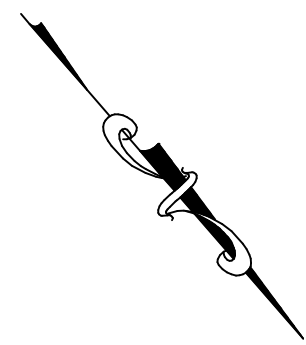


Y: \R14\DWGS\11616\AD\11616AD01.dwg 3/5/19

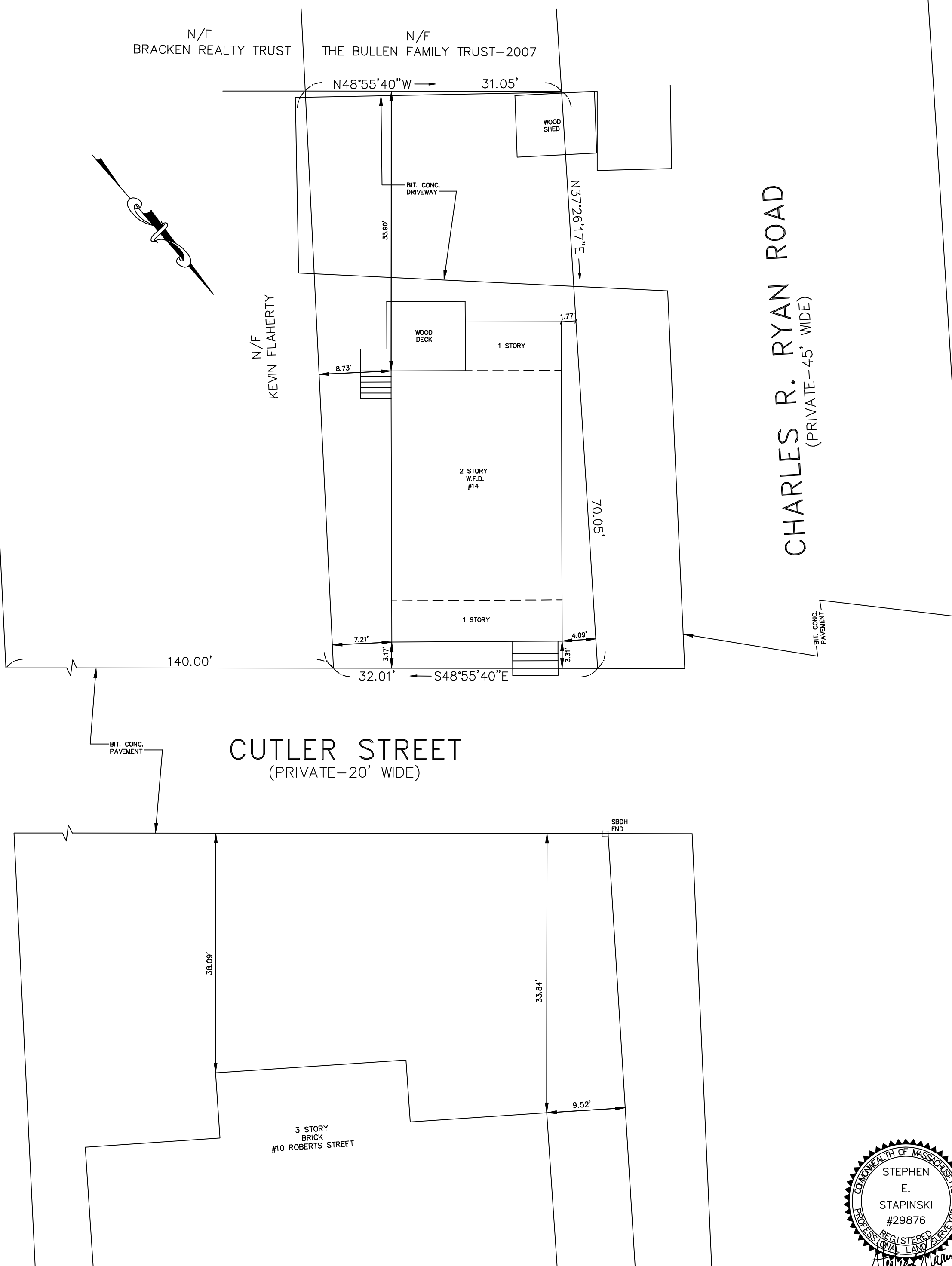
HINCKLEY STREET
(PUBLIC-35' WIDE)

N/F BRACKEN REALTY TRUST THE BULLEN FAMILY TRUST-2007



N/F KEVIN FLAHERTY

CHARLES R. RYAN ROAD
(PRIVATE-45' WIDE)



NOTES

1. SEE CITY OF SOMERVILLE ASSESSORS MAP 32 BLOCK H LOT 1 AND PLAN BOOK 62 PLAN 44 M.S.D.R.D. FOR SITE.
2. FOR BASIS OF SURVEY CONTROL SEE L.C.C C384 AND PLAN BOOK 1987 PLAN 697 M.S.D.R.D.

LEGEND

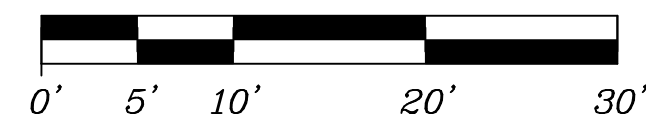
W.F.D.	WOOD FRAME DWELLING
N/F	NOW OR FORMERLY
□ SBDH	STONEBOUND DRILLHOLE
FND	FOUND
BIT. CONC.	BITUMINOUS CONCRETE
CEM. CONC.	CEMENT CONCRETE

*PLAN OF LAND
IN
SOMERVILLE, MA*

*DRAWN FOR
MARGARET O'MEARA
14 CUTLER STREET
SOMERVILLE, MASSACHUSETTS 02145*

DATE: MARCH 5, 2019

SCALE: 1"=10'



MERRIMACK ENGINEERING SERVICES
66 PARK STREET
ANDOVER, MASSACHUSETTS 01810
PHONE: (978) 475-3555 FAX: (978) 475-1448
EMAIL: MERRENG@AOL.COM