



existing conditions

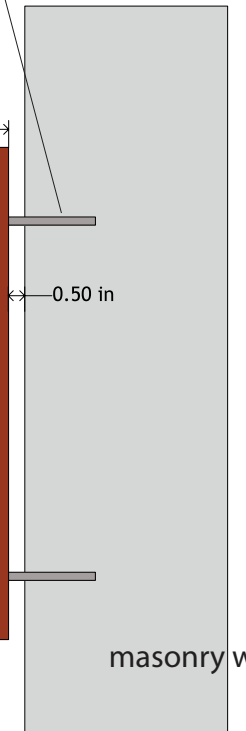
description:
 non-illuminated acrylic letters
 1/2" deep
 acrylic polyurethane finish
 aluminum studs with 1/2" spacers
 holes filled with silicone



proposed elevation

1/4" aluminum studs and spacers with silicone

0.50 in
 acrylic letter
 0.50 in



masonry wall

section

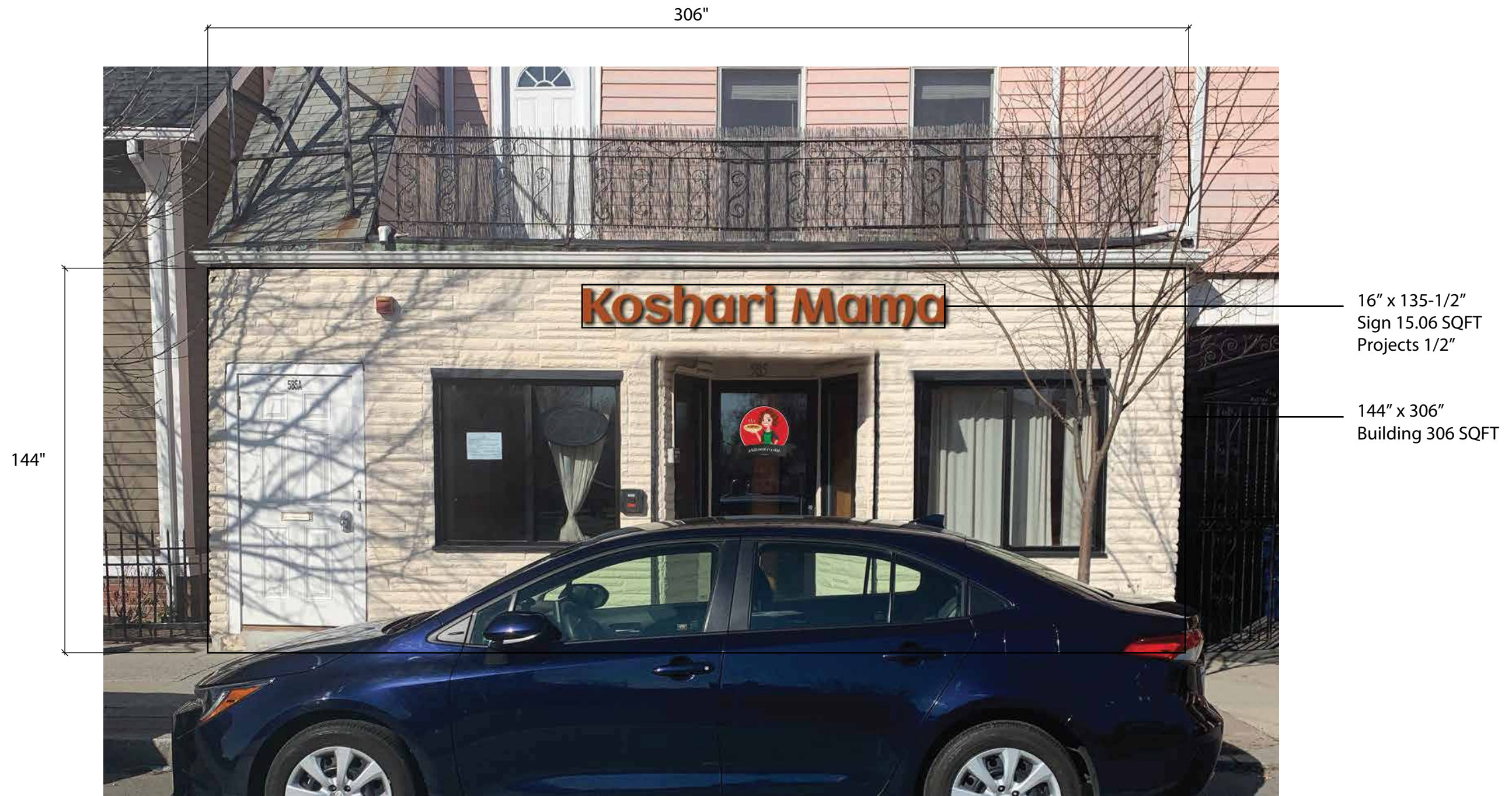
16.00 in
Koshari Mama
 135.50 in



SRP SIGN CORPORATION 236 PEARL STREET SOMERVILLE, MA 02145 (617) 623-6222	PROJECT: acrylic letters at storefront	
	ADDRESS: 585 somerville ave, somerville	
	CLIENT: koshari mama	
	DRAWN BY: srp	DATE: 4/13/21
	DESCRIPTION: elevation w dimens	
FILE LOCATION: clients/koshari mama/shop drawing 1.pdf		

PROPRIETARY NOTICE:
 THIS DRAWING SHEET AND CONTENTS
 HEREIN ARE THE PROPERTY OF SRP
 SIGN CORPORATION. USE OF THIS
 DRAWING'S CONTENTS OR DESIGN
 CONCEPTS FOR PURPOSES OTHER
 THAN ESTIMATING, DRAWING
 PREPARATION, AND/OR
 MANUFACTURING FOR SRP SIGN
 CORPORATION SHALL BE CAUSE FOR
 LEGAL RECOURSE BY SRP SIGN
 CORPORATION





Area Max Allowed = 40 sqft	Proposed Area = 15.06 sqft
Height Min = 1'	Proposed Height = 1' 6"
Height Max = 4'	Proposed Height = 1' 6"
Width Max = 90% facade width	Width Max = 90% x -25.5 = 22.95' width Proposed Width = 11.3'
Projection Max = 6"	Projection Proposed = .5"
Number of Signs = 1 per tenant	Quantity (1) sign proposed