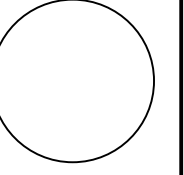


MIA
 MIA CONSULTANTS
 ARCHITECTS
 MARK LANDSBERG, P.A. LEED AP
 22 Pearl Street, Suite 1 • Newton, MA 02458
 617.552.3333 • cell 617.552.1319 • email: m@miacn.com

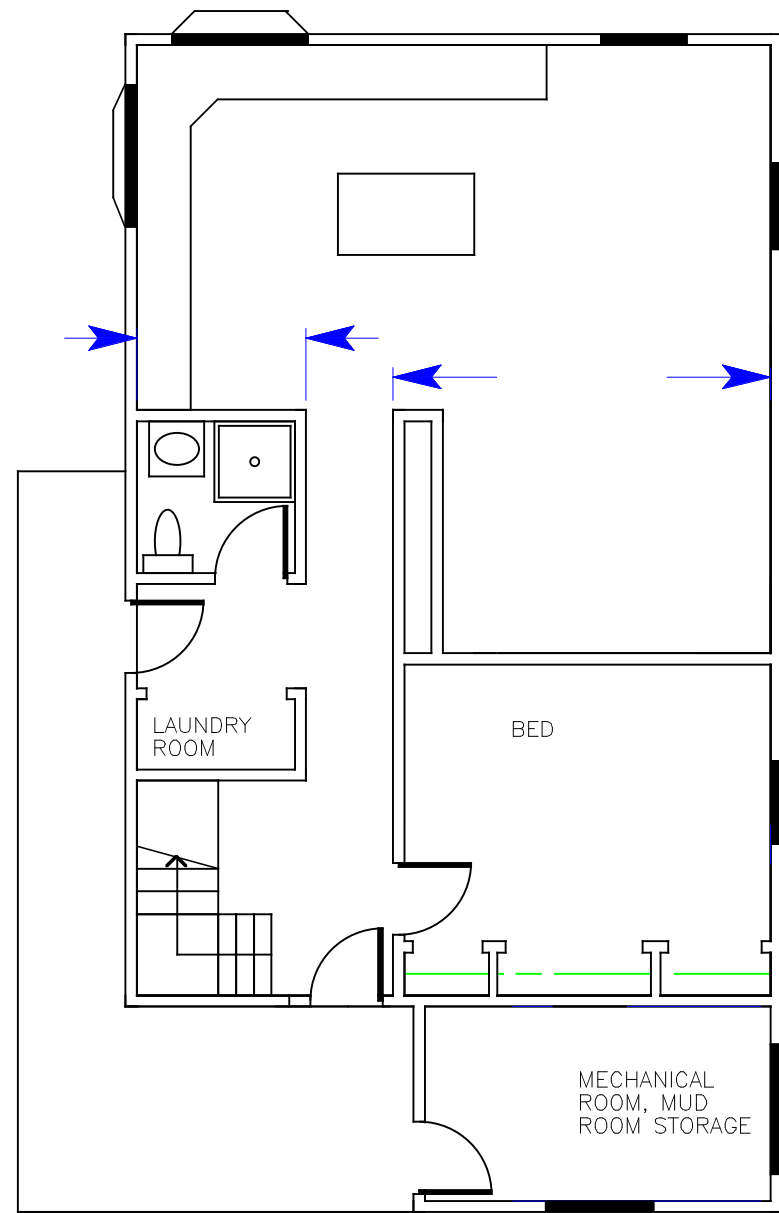


Date 3 May
 REV 2003 3 May
 \$2476 1/4"=1'-
 0" Job 1801
 Drawn ML

Alterations to the Meneses Residence
 16 Hillside Park, Somerville, MA
 Existing Floor Plans

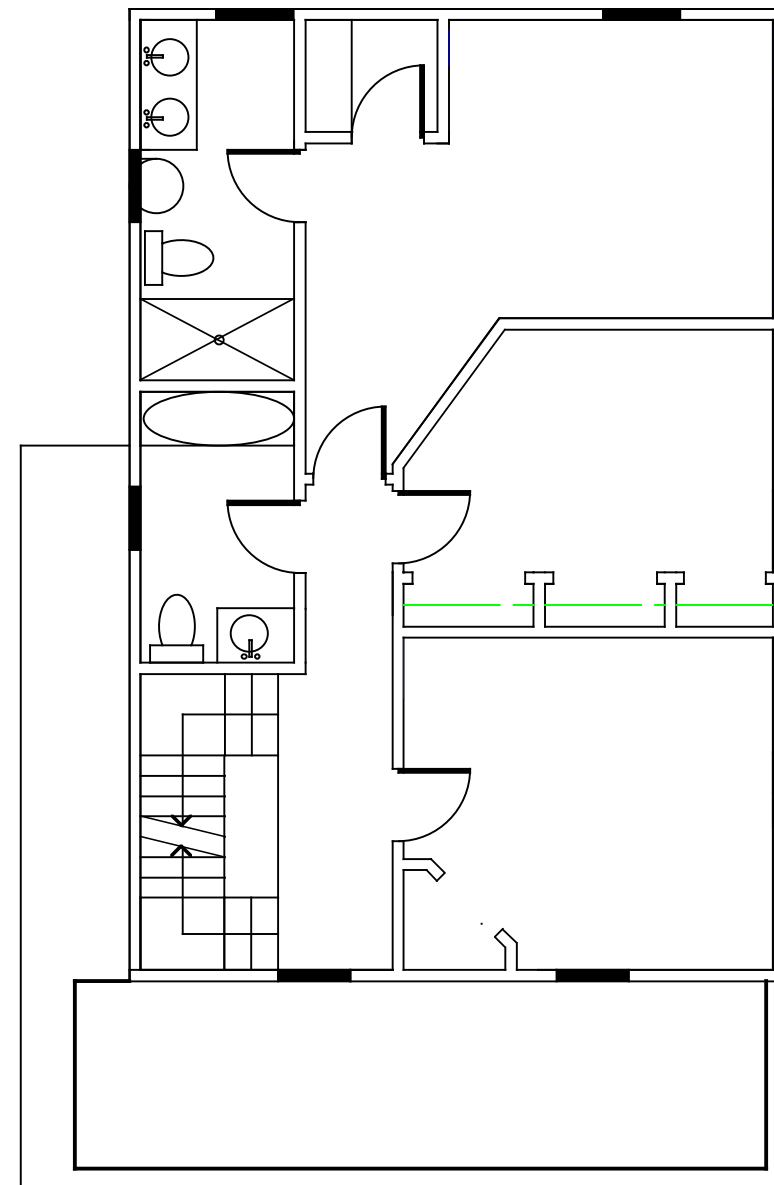
AE-1

REMODEL NEW KITCHEN, 1 BATH, 1 BED, LIVING ROOM
LAUNDRY ROOM



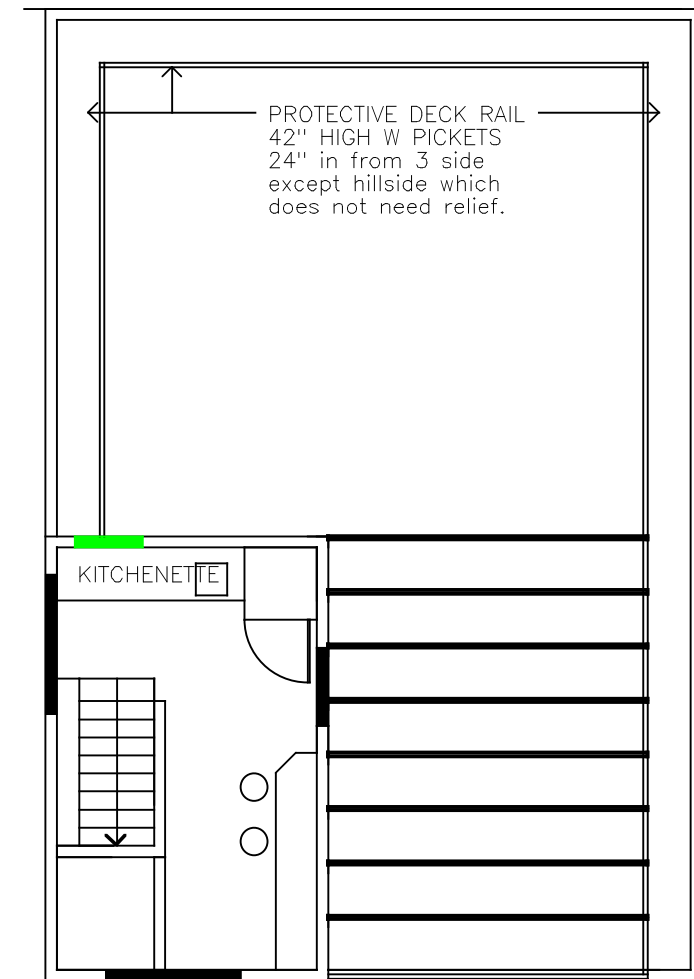
Proposed Second Floor Plan

1/4" = 1'-0"



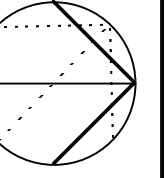
Proposed Third Floor Plan

1/4" = 1'-0"

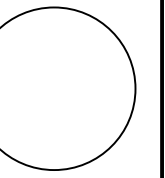


Proposed Roof Floor Plan

1/4" = 1'-0"

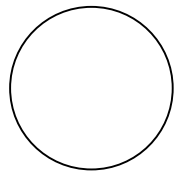
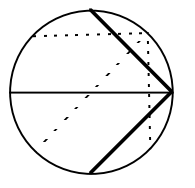
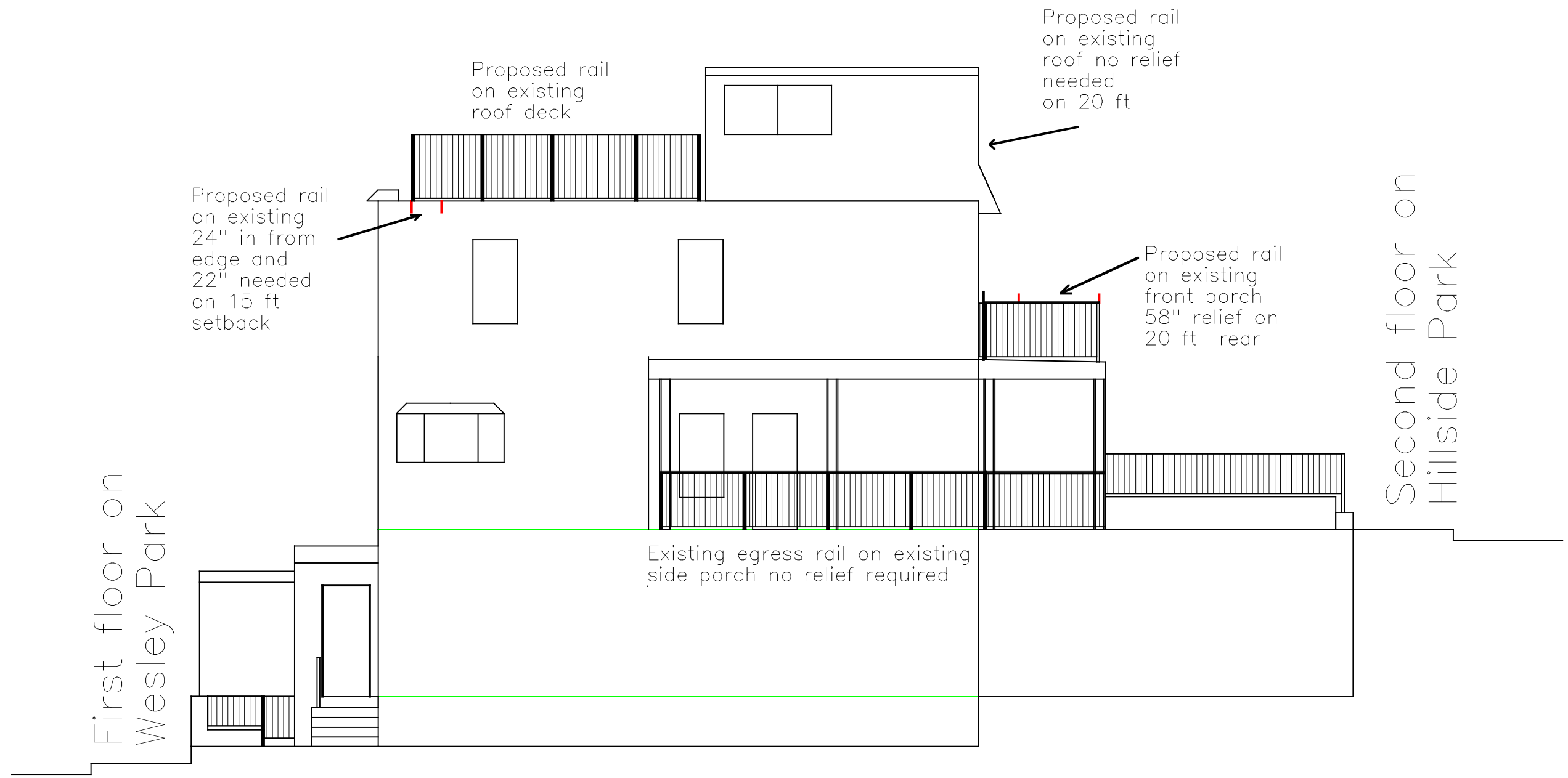
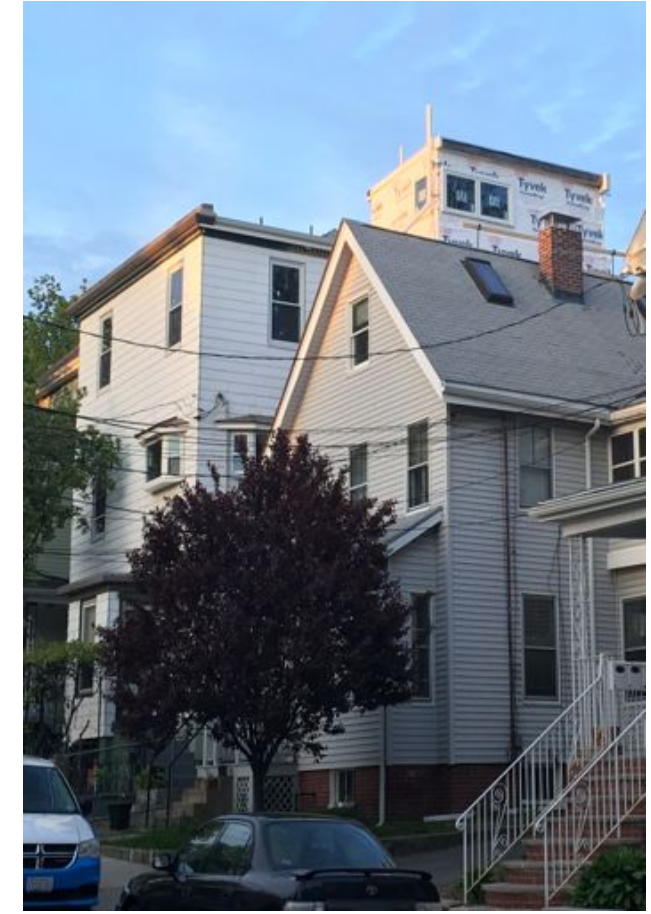


MIA
MIA CONSULTANTS
ARCHITECTS
MARK LANDSBERG, P.A. LEED AP
107 West Street • Suite 1 • Newbury, MA 02459
603.886.8888
mialand@comcast.net



Date	3 May	3 May	3 May
Rev	003	001	001
Scale	1/4" = 1'-0"	1/4" = 1'-0"	1/4" = 1'-0"
Job	0"	1801	
Drawn	ML		

Alterations to the Meneses Residence
16 Hillside Park, Somerville, MA
Proposed Floor Plans



Date 3 May
Rev. 3 May
Scale 1/4"=1'-0"
Job 1801
Drawn ML

Alterations to the Meneses Residence
16 Hillside Park, Somerville, MA
Existing Floor Plans

AE-1

