



- Project Site
- Pedestrian Access
- Green Open Space
- Bike Routes
- Rail
- T T Stop

mikyoung kim design

Figure 1.1
Neighborhood Context

**74 Middlesex Avenue
Somerville, Massachusetts**



Source: Mikyoung Kim Design

mikyoung kim design Figure 1.2
Existing Conditions Plan

**74 Middlesex Avenue
Somerville, Massachusetts**



Source: Mikyoung Kim Design



mikyoung kim design Figure 1.3
Existing Site Photos

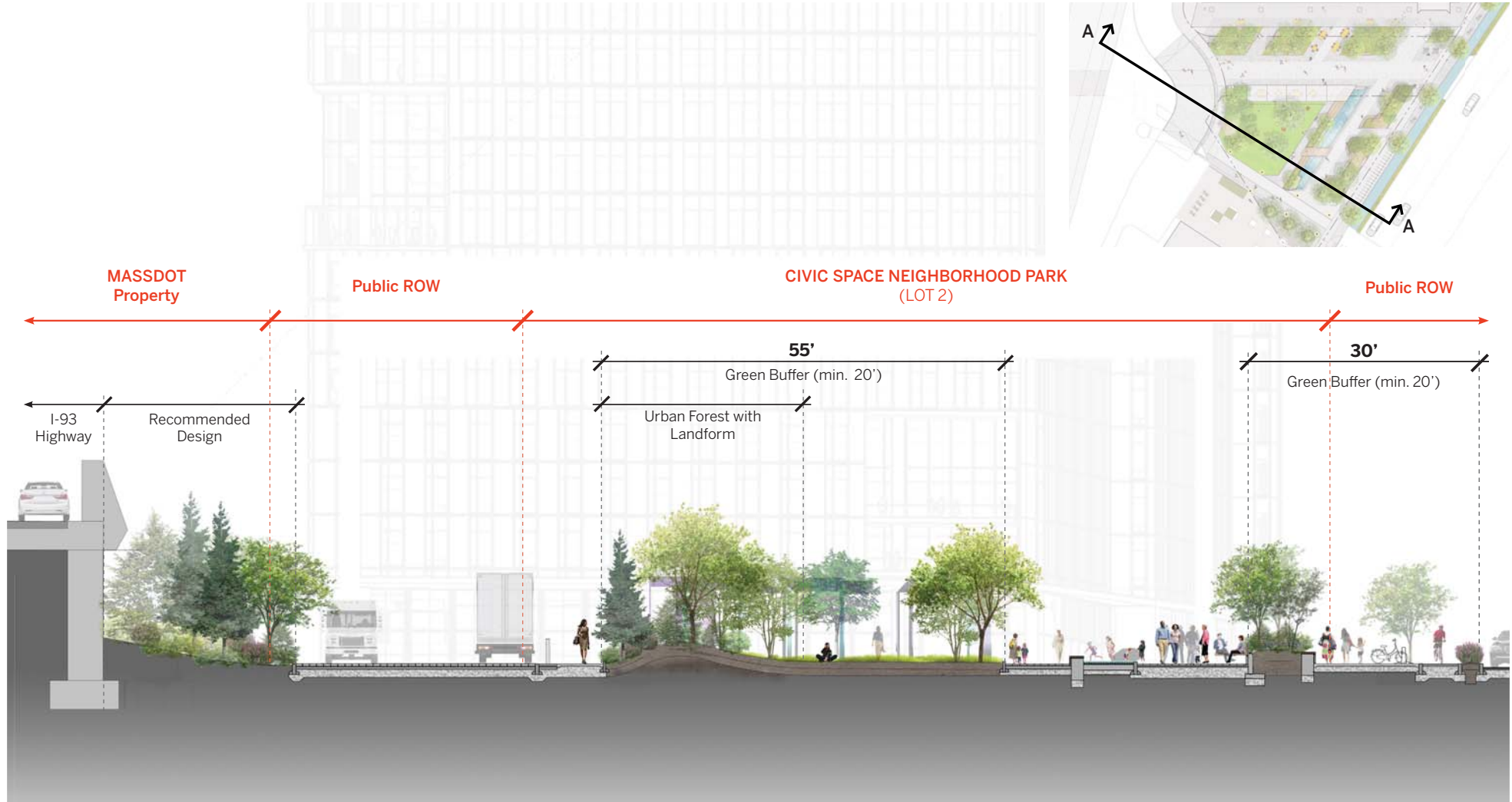
74 Middlesex Avenue
Somerville, Massachusetts



Source: Mikyoung Kim Design

mikyoung kim design Figure 1.4
Illustrative Site Plan

74 Middlesex Avenue
Somerville, Massachusetts

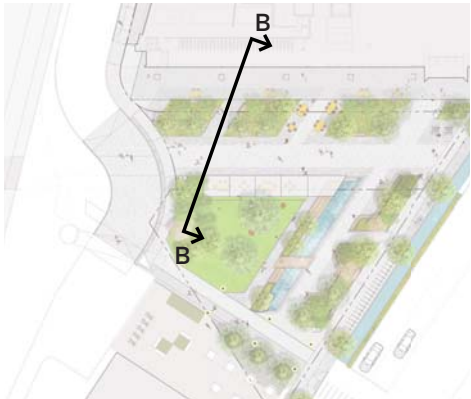
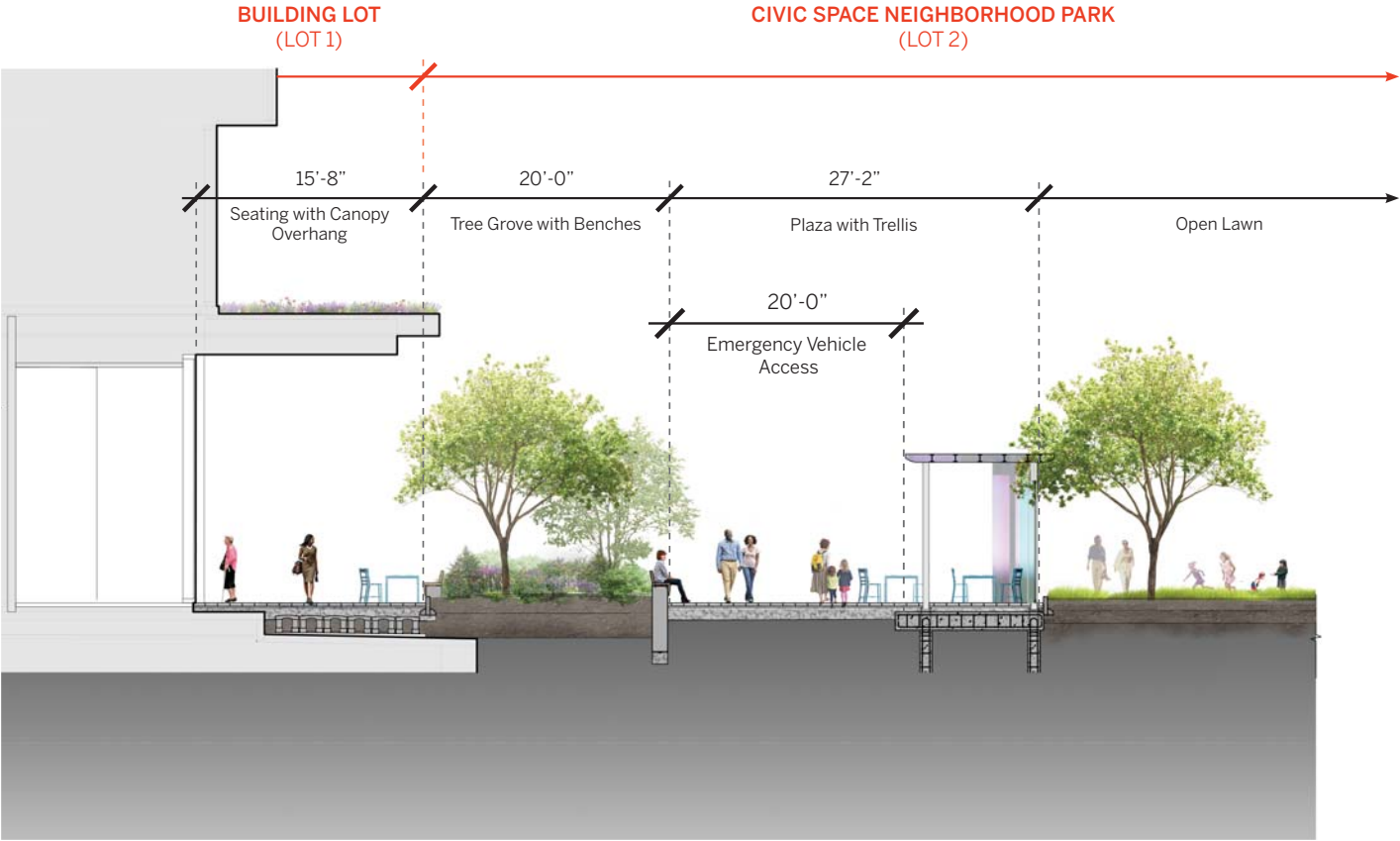


Source: Mikyoung Kim Design

mikyoung kim design

Figure 1.6a
Landscape Section Plan
Section A-A

**74 Middlesex Avenue
Somerville, Massachusetts**



Source: Mikyoung Kim Design

mikyoung kim design Figure 1.6b
Landscape Section Plan
Section B-B
**74 Middlesex Avenue
Somerville, Massachusetts**



Source: Mikyoung Kim Design

mikyoung kim design Figure 1.7
Landscape Perspective Image

**74 Middlesex Avenue
Somerville, Massachusetts**



Source: Mikyoung Kim Design

- | | |
|---|---|
| ■ Tables | ■ Water Edge Seating |
| ■ Benches (50% Backed) | ■ Movable Lawn Chairs (Backed) |
| ■ Nook Seating (50% Backed) | ■ Chairs for Tables (Backed) |

mikyoung kim design Figure 1.8a
Illustrative Site Furnishings Plan

**74 Middlesex Avenue
Somerville, Massachusetts**



Table Type 1 - Movable Table

Manufacturer: Landscape Forms
Model: Chipman Table

*Note: Final site furnishing selections subject to change.
See Figure 1.5 for complete site furnishing layout.*

Source: Mikyoung Kim Design



Table Type 2 - Movable Table

Manufacturer: mmcite
Model: Bohem Circular Table



Table Type 3 - Long Table

Manufacturer: Landscape Forms
Model: GO Table



Chair Type 1 - Movable Chair
Manufacturer: Landscape Forms
Model: Chipman Chair

Note: Final site furnishing selections subject to change.
See Figure 1.5 for complete site furnishing layout.

Source: Mikyoung Kim Design



Chair Type 2 - Movable Chair
Manufacturer: mmcite
Model: Bohem Outdoor Chair



Chair Type 3 - Swivel Chair
Manufacturer: Vestre
Model: Berlin Chair



Chair Type 4 - Lounge
Manufacturer: LOLL Design
Model: Adirondack Chair



Bench Type 1 & 2

Manufacturer: Streetlife
Model: Solid Top Bench

*Note: Final site furnishing selections subject to change.
See Figure 1.5 for complete site furnishing layout.*

Source: Mikyoung Kim Design



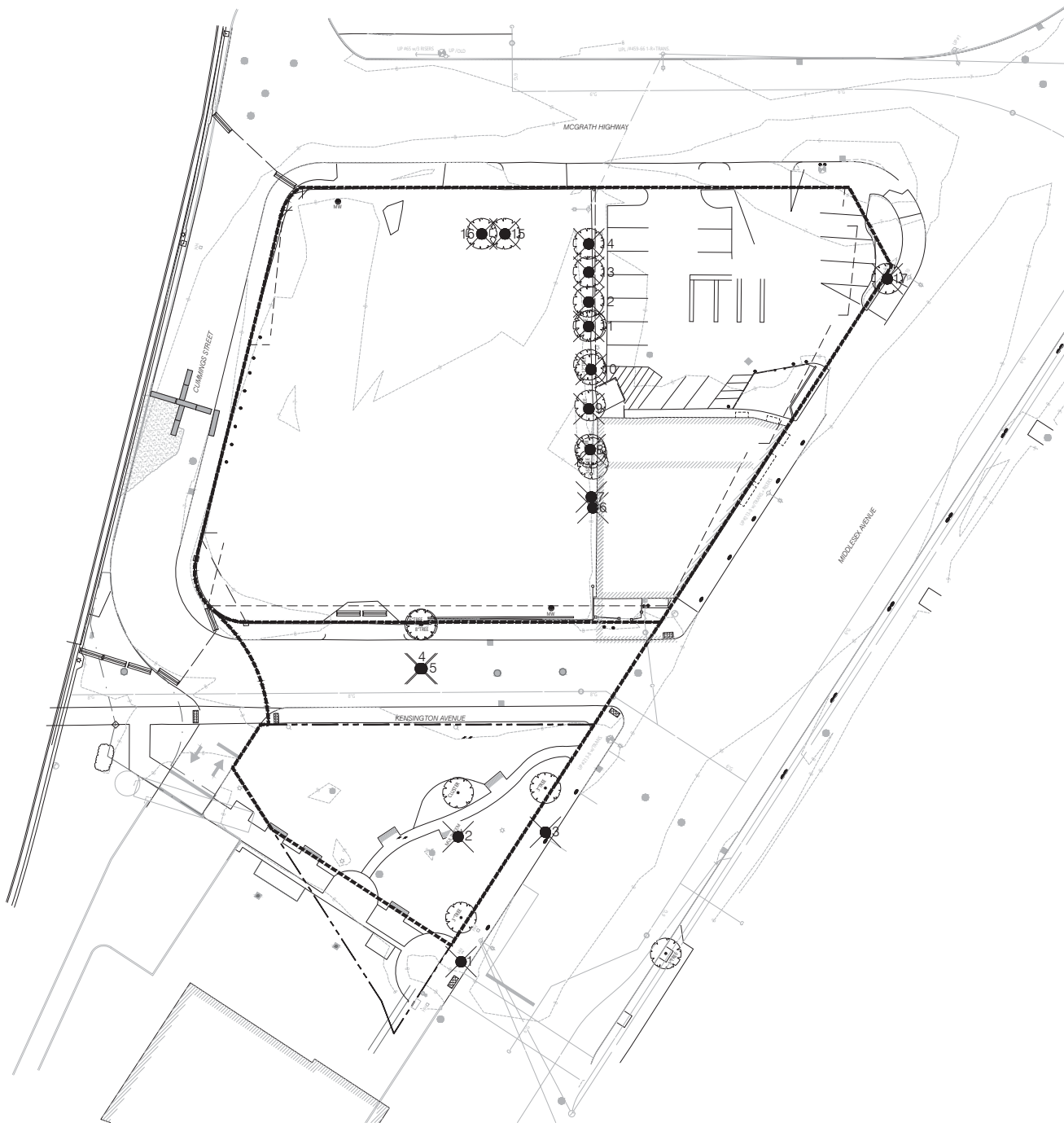
Bench Type 3

Manufacturer: Streetlife
Model: Solid Circular Bench



Integrated Bench Type 1 & 2

Manufacturer: Custom Design
Model: N/A



TREE REMOVAL PLAN LEGEND

REMOVE EXISTING TREE AND ROOT ZONE.
GRIND ROOT TO 3'-6" DEPTH

TREE REMOVAL PLAN NOTES

1. THOROUGHLY EXAMINE AND VERIFY ALL EXISTING CONDITIONS IN THE FIELD AND REPORT ANY DISCREPANCIES TO THE LANDSCAPE ARCHITECT.
2. PERFORM ALL TREE REMOVALS SO AS NOT TO DISTURB ANY EXISTING TREES TO REMAIN. IF EXISTING TREES ARE DAMAGED, CONTRACTOR TO REPLACE WITH TREE OF SAME SPECIES TO BE APPROVED BY THE LANDSCAPE ARCHITECT.

GENERAL VEGETATION CLEAN-UP & INVASIVE REMOVALS

1. REVIEW ALL AREAS OF THE SITE WITHIN PROPERTY LINE AND PROVIDE GENERAL CLEAN-UP OF EXISTING VEGETATION AND REMOVAL OF ALL DEAD PLANT MATERIAL & INVASIVE SPECIES.
2. CONTRACTOR TO ENGAGE LOCAL HORTICULTURISTS / BOTANIST AND AN ARBORIST TO REVIEW SITE AND PROVIDE REPORT FOR REMOVAL AND PRUNING PROTOCOL. REPORT TO BE PROVIDED TO LA AND OWNER FOR FINAL APPROVAL PRIOR TO PROCEEDING WITH WORK.
3. PENDING REPORT LA TO PROVIDE RECOMMENDATIONS TO CLIENT FOR LOW-MAINTENANCE PLANT MATERIAL FOR INDICATED LOCATIONS.
4. ROOTBALLS TO BE REMOVED WITH REMOVAL OF SHRUBS & PERENNIALS.

TREE REMOVAL SCHEDULE

KEY	CALIPER	TREE SPECIES	COMMON NAME	CONDITION
1	3"	UNKNOWN	UNKNOWN	
2	3"	BETULA NIGRA	RIVER BIRCH	
3	3"	UNKNOWN	UNKNOWN	
4	6"	AILANTHUS ALTISSIMA	TREE OF HEAVEN	
5	8"	AILANTHUS ALTISSIMA	TREE OF HEAVEN	
6	16"	AILANTHUS ALTISSIMA	TREE OF HEAVEN	
7	12"	AILANTHUS ALTISSIMA	TREE OF HEAVEN	
8	8"	AILANTHUS ALTISSIMA	TREE OF HEAVEN	
9	12"	AILANTHUS ALTISSIMA	TREE OF HEAVEN	
10	8"	AILANTHUS ALTISSIMA	TREE OF HEAVEN	
11	TBD	AILANTHUS ALTISSIMA	TREE OF HEAVEN	
12	12"	UNKNOWN	UNKNOWN	
13	16"	UNKNOWN	UNKNOWN	
14	12"	AILANTHUS ALTISSIMA	TREE OF HEAVEN	
15	14"	AILANTHUS ALTISSIMA	TREE OF HEAVEN	
16	8"	AILANTHUS ALTISSIMA	TREE OF HEAVEN	
17	6"	MALLUS SPP	CRABAPPLE	

*TREE GRADES AND SPECIES CONFIRMATION PENDING ARBORIST REPORT

Client
One Federal Street, Suite 1800
Boston, MA 02110

Geotechnical Engineer
Terry Adams
70 Blanchard Rd #206
Burlington, MA 01803

Civil Engineer
VHB
90 High Street, 10th Floor
Boston, MA 02110

Landscape Architect
Michael J. Grogan
119 Brattle St #103
Boston, MA 02116

Structural Engineer
Michael J. Grogan
101 Federal Street
Boston, MA 02110

MEP Engineer
BHA
10 Saint Street, 4th Floor
Boston, MA 02110

Code Consultant
Jonathan Hughes
1651 Worcester Road, Suite 501
New Haven, CT 06511

LEED / Environmental Consultant
Avalon Ten
40 West 20th Street
New York, NY 10011

Building Envelope Consultant
Hartigan
440 New Avenue South, 10th Floor
New York, NY 10011

Elevator Consultant
VDA
101 Summer Street, 4th Floor
Boston, MA 02110

Parking Consultant
DESIGN, INC.
16 Tremont Street #200
Boston, MA 02110

Lighting Consultant
Lam Partners
16 Summer Street
Cambridge, MA 02140

Wind Analysis
RWD
10 Broad Street, 10th Floor
New York, NY 10004

Specifications
Patti Associates
121 Washington Street #2
West Newton, MA 02459

Facade Maintenance
Erick Engineering
100 Ames Street
Haverhill, MA 01830

Signage
R&B Baroni & Associates
40 Dunster Street
Cambridge, MA 02138

SITE PLAN APPROVAL



PROJECT NUMBER:

DATE:

REVISIONS:

1		
2		
3		
4		
5		
6		
7		
8		
9		
10		
11		
12		
13		
14		
15		
16		
17		

SEE PREVIOUS ISSUES FOR REVISIONS NOT LISTED HERE

SCALE: 1/8"=1'-0"

DRAWING NAME:

EXISTING TREE PLAN

DRAWING NUMBER:

NOT FOR CONSTRUCTION

1.9

Client
Developer
One Federal Street, Suite 1000
Boston, MA 02110

Geotechnical Engineer
Hensel Phelps
70 Blanchard Rd #200
Burlington, MA 01803

Civil Engineer
VHB
90 High Street, 10th Floor
Boston, MA 02110

Landscape Architect
Michael Janney Group
119 Brattle St #103
Boston, MA 02110

Structural Engineer
Michael Janney Group
101 Federal Street
Boston, MA 02110

MEP Engineer
BRJA
10 Stuart Street, 4th Floor
Boston, MA 02110

Code Consultant
James Higgins
1681 Worcester Road, Suite 101
New Bedford, CT 01770

LEED / Environmental Consultant
Avalon Ten
60 State Street
Boston, MA 02110

Building Envelope Consultant
Hartigan
440 Park Avenue South, 10th Floor
New York, NY 10018

Elevator Consultant
VDA
101 Summer Street, 4th Floor
Boston, MA 02110

Parking Consultant
DESIGN, Inc.
10 Forest Street #200
Boston, MA 02110

Lighting Consultant
Lum Partners
14 Shuman Street
Cambridge, MA 02142

Wind Analysis
RWG
10 Broad Street, 10th Floor
New York, NY 10004

Specifications
Patti Associates
1121 Washington Street #2
West Newton, MA 02459

Facade Maintenance
Frank Engineering
100 Ames Street
Boston, MA 02110

Signage
Rob Green & Associates
40 Dunster Street
Cambridge, MA 02138

SITE PLAN APPROVAL



PROJECT NUMBER:

DATE:

REVISIONS:

1		
2		
3		
4		
5		
6		
7		
8		
9		
10		
11		
12		
13		
14		
15		
16		
17		
18		
19		
20		
21		
22		
23		
24		
25		
26		
27		
28		
29		
30		
31		
32		
33		
34		
35		
36		
37		
38		
39		
40		
41		
42		
43		
44		
45		
46		
47		
48		
49		
50		
51		
52		
53		
54		
55		
56		
57		
58		
59		
60		
61		
62		
63		
64		
65		
66		
67		
68		
69		
70		
71		
72		
73		
74		
75		
76		
77		
78		
79		
80		
81		
82		
83		
84		
85		
86		
87		
88		
89		
90		
91		
92		
93		
94		
95		
96		
97		
98		
99		
100		

SEE PREVIOUS ISSUES FOR REVISIONS NOT LISTED HERE

SCALE:

DRAWING NAME:

PLANTING PLAN

DATE:

PROJECT NUMBER:

DATE:

REVISIONS:

SEE PREVIOUS ISSUES FOR REVISIONS NOT LISTED HERE

SCALE:

DRAWING NAME:

PLANTING PLAN

DATE:

PROJECT NUMBER:

DATE:

REVISIONS:

SEE PREVIOUS ISSUES FOR REVISIONS NOT LISTED HERE

SCALE:

DRAWING NAME:

PLANTING PLAN

DATE:

PROJECT NUMBER:

DATE:

REVISIONS:

SEE PREVIOUS ISSUES FOR REVISIONS NOT LISTED HERE

SCALE:

DRAWING NAME:

PLANTING PLAN

DATE:

PROJECT NUMBER:

DATE:

REVISIONS:

SEE PREVIOUS ISSUES FOR REVISIONS NOT LISTED HERE

SCALE:

DRAWING NAME:

PLANTING PLAN

DATE:

PROJECT NUMBER:

DATE:

REVISIONS:

SEE PREVIOUS ISSUES FOR REVISIONS NOT LISTED HERE

SCALE:

DRAWING NAME:

PLANTING PLAN

DATE:

PROJECT NUMBER:

DATE:

REVISIONS:

SEE PREVIOUS ISSUES FOR REVISIONS NOT LISTED HERE

SCALE:

DRAWING NAME:

PLANTING PLAN

DATE:

PROJECT NUMBER:

DATE:

REVISIONS:

SEE PREVIOUS ISSUES FOR REVISIONS NOT LISTED HERE

SCALE:

DRAWING NAME:

PLANTING PLAN

DATE:

PROJECT NUMBER:

DATE:

REVISIONS:

SEE PREVIOUS ISSUES FOR REVISIONS NOT LISTED HERE

SCALE:

DRAWING NAME:

PLANTING PLAN

DATE:

PROJECT NUMBER:

DATE:

REVISIONS:

SEE PREVIOUS ISSUES FOR REVISIONS NOT LISTED HERE

SCALE:

DRAWING NAME:

PLANTING PLAN

DATE:

PROJECT NUMBER:

DATE:

REVISIONS:

SEE PREVIOUS ISSUES FOR REVISIONS NOT LISTED HERE

SCALE:

DRAWING NAME:

PLANTING PLAN

DATE:

PROJECT NUMBER:

DATE:

REVISIONS:

SEE PREVIOUS ISSUES FOR REVISIONS NOT LISTED HERE

SCALE:

DRAWING NAME:

PLANTING PLAN

DATE:

PROJECT NUMBER:

DATE:

REVISIONS:

SEE PREVIOUS ISSUES FOR REVISIONS NOT LISTED HERE

SCALE:

DRAWING NAME:

PLANTING PLAN

DATE:

PROJECT NUMBER:

DATE:

REVISIONS:

SEE PREVIOUS ISSUES FOR REVISIONS NOT LISTED HERE

SCALE:

DRAWING NAME:

PLANTING PLAN

DATE:

PROJECT NUMBER:

DATE:

REVISIONS:

SEE PREVIOUS ISSUES FOR REVISIONS NOT LISTED HERE

SCALE:

DRAWING NAME:

PLANTING PLAN

DATE:

PROJECT NUMBER:

DATE:

REVISIONS:

SEE PREVIOUS ISSUES FOR REVISIONS NOT LISTED HERE

SCALE:

DRAWING NAME:

PLANTING PLAN

DATE:

PROJECT NUMBER:

DATE:

REVISIONS:

SEE PREVIOUS ISSUES FOR REVISIONS NOT LISTED HERE

SCALE:

DRAWING NAME:

PLANTING PLAN

DATE:

PROJECT NUMBER:

DATE:

REVISIONS:

SEE PREVIOUS ISSUES FOR REVISIONS NOT LISTED HERE

SCALE:

DRAWING NAME:

PLANTING PLAN

DATE:

PROJECT NUMBER:

DATE:

REVISIONS:

SEE PREVIOUS ISSUES FOR REVISIONS NOT LISTED HERE

SCALE:

DRAWING NAME:

PLANTING PLAN

DATE:

PROJECT NUMBER:

DATE:

REVISIONS:

SEE PREVIOUS ISSUES FOR REVISIONS NOT LISTED HERE

SCALE:

DRAWING NAME:

PLANTING PLAN

DATE:

PROJECT NUMBER:

DATE:

REVISIONS:

SEE PREVIOUS ISSUES FOR REVISIONS NOT LISTED HERE

SCALE:

DRAWING NAME:

PLANTING PLAN

DATE:

PROJECT NUMBER:

DATE:

REVISIONS:

SEE PREVIOUS ISSUES FOR REVISIONS NOT LISTED HERE

SCALE:

DRAWING NAME:

PLANTING PLAN

DATE:

PROJECT NUMBER:

DATE:

REVISIONS:

SEE PREVIOUS ISSUES FOR REVISIONS NOT LISTED HERE

SCALE:

DRAWING NAME:

PLANTING PLAN

DATE:

PROJECT NUMBER:

DATE:

REVISIONS:

SEE PREVIOUS ISSUES FOR REVISIONS NOT LISTED HERE

SCALE:

DRAWING NAME:

PLANTING PLAN

DATE:

PROJECT NUMBER:

DATE:

REVISIONS:

SEE PREVIOUS ISSUES FOR REVISIONS NOT LISTED HERE

SCALE:

DRAWING NAME:

PLANTING PLAN

DATE:

PROJECT NUMBER:

DATE:

REVISIONS:

SEE PREVIOUS ISSUES FOR REVISIONS NOT LISTED HERE

SCALE:

DRAWING NAME:

PLANTING PLAN

DATE:

PROJECT NUMBER:

DATE:

REVISIONS:

SEE PREVIOUS ISSUES FOR REVISIONS NOT LISTED HERE

SCALE:

DRAWING NAME:

PLANTING PLAN

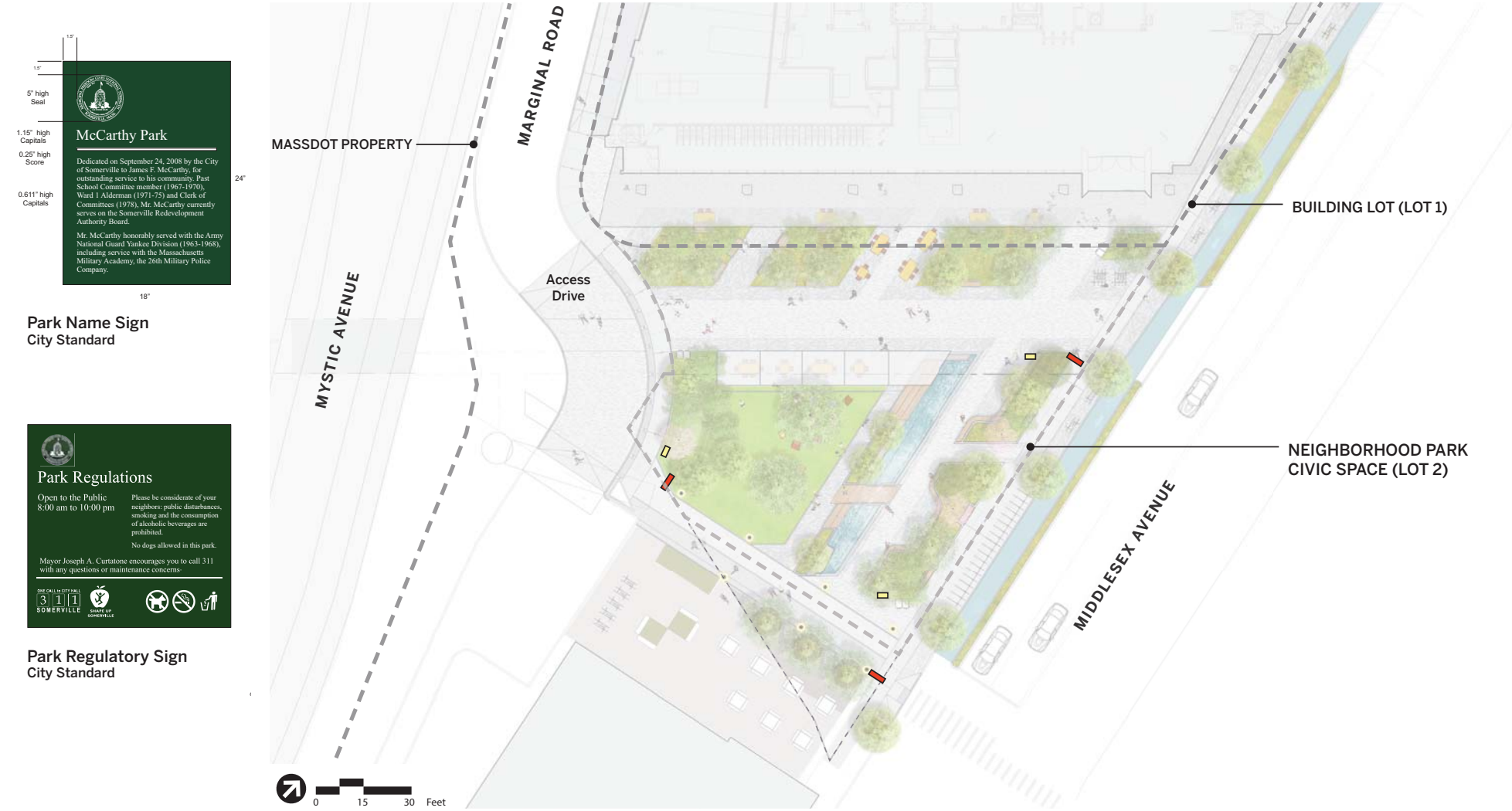
DATE:

PROJECT NUMBER:

DATE:

REVISIONS:

SEE PREVIOUS ISSUES FOR



-  Park Name Sign (City of Somerville Standard)
-  Park Regulatory Sign (City of Somerville Standard)

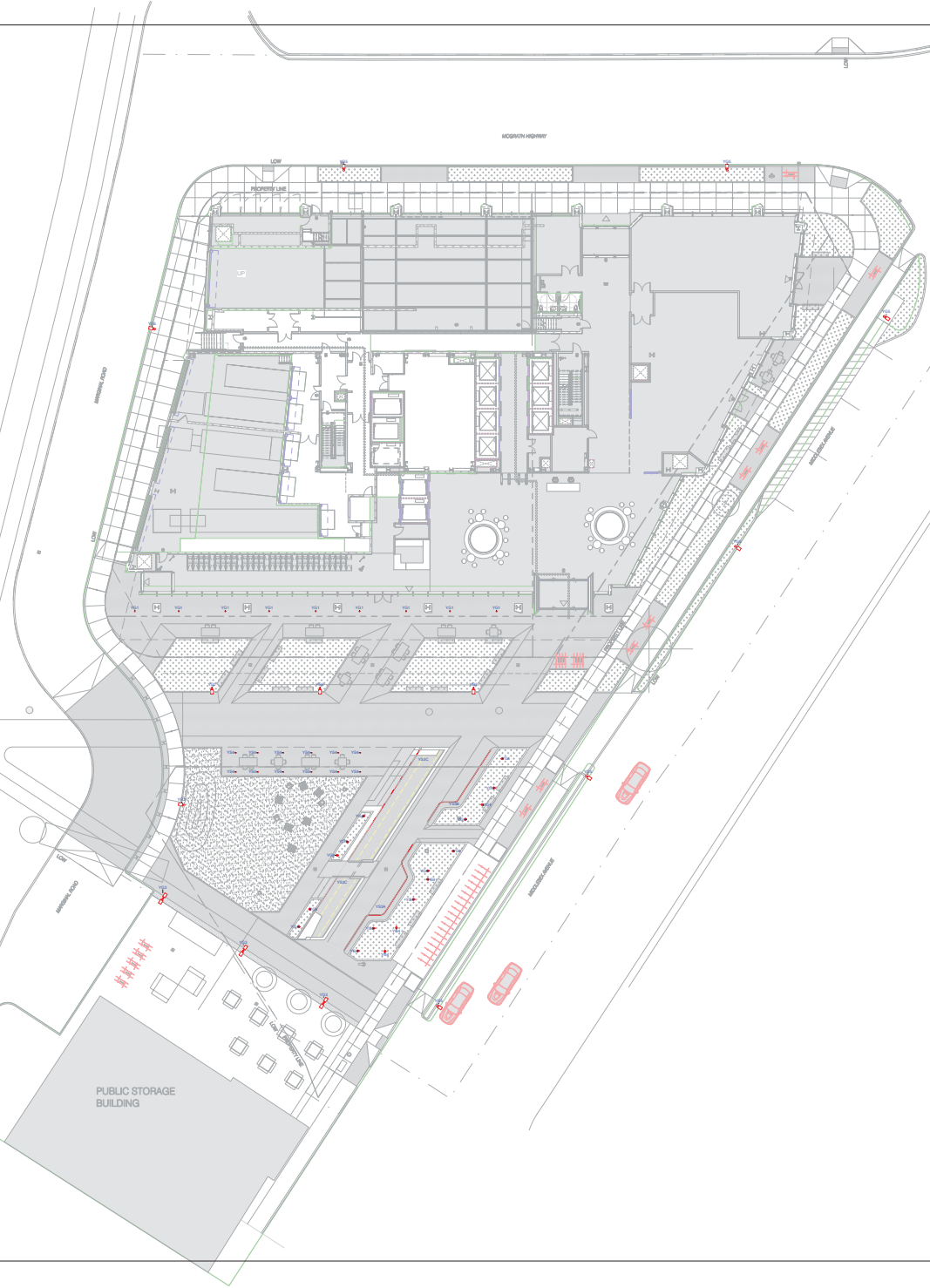
mikyoung kim design Figure 1.11
Signage Plan

74 Middlesex Avenue
Somerville, Massachusetts

NOT TO SCALE

© 2012 ELKUS | MANFREDI ARCHITECTS

LEVEL 1 LANDSCAPE
1/16" = 1'-0"



ELKUS | MANFREDI
ARCHITECTS

1000 23 BRIDGECREASE AVENUE
BOSTON, MASSACHUSETTS 02215
(617) 421-1300

74 Middlesex

- Client**
City Federal Street, Suite 1004
Boston, MA 02110
- Geotechnical Engineer**
Hatch Associates
70 Beacon St #204
Boston, MA 02108
- MEP Engineer**
VME Engineering
60 High Street, 10th Floor
Boston, MA 02110
- Landscape Architect**
Manfredi Associates
110 Beacon St #100
Boston, MA 02108
- Structural Engineer**
McNemar & Associates
101 Federal Street
Boston, MA 02110
- MEP Engineer**
B&A
10 Quail Street, 4th Floor
Boston, MA 02110
- Code Consultant**
Jackson Hughes
1001 Worcester Road, Suite 201
New Bedford, MA 01905
- LED / Environmental Consultant**
Avalon Inc.
45 East 20th Street
New York, NY 10003
- Building Envelope Consultant**
Hatch Associates
400 Park Avenue South, 15th Floor
New York, NY 10018
- Elevator Consultant**
VCA
101 Summer Street, 4th Floor
Boston, MA 02110
- Parking Consultant**
CECMA, Inc.
15 Tremont Street #1000
Boston, MA 02108
- Lighting Consultant**
Lumina Partners
54 Sherman Street
Cambridge, MA 02142
- Wind Analysis**
B&A
85 Broad Street, 10th Floor
New York, NY 10004
- Specifications**
Kahn Associates
1121 Washington Street #2
West Newton, MA 02459
- Facade Maintenance**
Globe Engineering
100 Avenue Street
Haverhill, MA 01830
- Signage**
B&A
45 Dunster Street
Cambridge, MA 02138

SITE PLAN APPROVAL



PROJECT NUMBER: 20128

DATE: _____

REVISIONS:	
1	_____
2	_____
3	_____
4	_____
5	_____
6	_____
7	_____
8	_____
9	_____
10	_____
11	_____
12	_____
13	_____
14	_____
15	_____
16	_____
17	_____
18	_____
19	_____
20	_____

SEE PREVIOUS ISSUES FOR REVISIONS NOT LISTED HERE

SCALE: 1/16" = 1'-0"

DRAWING NAME:
LANDSCAPE
LIGHTING

DRAWING NUMBER:

1.12a

REVISION 12.12.18

© 2018 ELKUS | MANFREDI ARCHITECTS

Lighting Fixture Schedule															
Type	Rev Date	Description	Mounting	Manufacturer	Catalog #	Source Type	CCT	CRI	Control Intent	Delivered Lumens	Driver Location	Watts per Foot	Total Wattage	Fixture Location	Notes
P1	5/12/2021	Pendant mounted 18" diameter round garage downlight with wide throw optics	pendant	Cooper	Top Tier #TT-D1-830-U-WQ-MOUNTING-LEAD-FINISH	LED	3000	80	Dimming	3500	Integral		28.0 W	Parking	Mounting and Finish per Architect. Controls per Engineer.
P2	5/12/2021	Pendant mounted 3" x 5" profile continuous linear lensed LED downlight, IP54 rated.	pendant	Lumenwerx	VIA 3 Seal #V3SEALS-D-WET1-EPD0-SW-80-500-30-8FT-UNV-D1-1C-FINISH-EF	LED	3000	80	Dimming	500	Integral	5.0 W		Parking	Mounting and Finish per Architect. Provide lengths and pattern per plans. Controls per Engineer.
P3	5/12/2021	Pendant mounted 3" x 5" profile continuous linear direct LED wallwasher, IP54 rated.	pendant	Lumenwerx	VIA 3 Seal #V3SEALS-D-WET1-ASD0-SW-80-500-30-8FT-UNV-D1-1C-FINISH-EF	LED	3000	80	Dimming	500	Integral	5.0 W		Parking	Mounting and Finish per Architect. Provide lengths and pattern per plans. Controls per Engineer.
P4A	8/3/2021	Pendant mounted 4" wide x 2" long linear direct LED pendant, rounded lens	pendant	Lithonia	CLX' #CLX-L24-2000LM-HEF-RDL-GZ10-30K-80CRI + ZACVHM100	LED	3000	80	Non Dim	2000	Integral	7.0 W	14.0 W	BOH	Finish per Architect. Controls per Engineer.
P4B	8/3/2021	Pendant mounted 4" wide x 4" long linear direct LED pendant, rounded lens	pendant	Lithonia	CLX' #CLX-L48-4000LM-HEF-RDL-GZ10-30K-80CRI + ZACVHM100	LED	3000	80	Non Dim	4000	Integral	6.5 W	26.0 W	BOH	Finish per Architect. Controls per Engineer.
P5	8/3/2021	Pendant mounted 4" wide x 6" long linear direct/indirect LED pendant	pendant	Lumenwerx	VIA4' #VIA4PFD-HLO-FH-CLO-LED-80-500-30-8FT-UNV-D1-1-MOUNTING-FINISH-CON-TROLS	LED	3000	80	Dimming	1250	Integral	6.0 W	36.0 W	Stairs	Mounting and Finish per Architect. Controls per Engineer. Provide occupancy sensor dimming for unoccupied stair dimming.
R1	8/3/2021	Recessed 2" round aperture LED downlight	recessed	Gotham	EVO' #EVO2-3015-AR-LSS-WD-MVOLT-UQZ	LED	3000	80	Dimming	1500	Integral	0.0 W	21.0 W	Core Bathrooms	Flange finish per Architect.
R1A	8/3/2021	Recessed mounted 2" x 2" LED volumetric troffer	recessed	Lithonia	BLT' #BLT-T2-20LHE-ADSM-EZ1-LP830-CONTROLS	LED	3000	80	Non Dim	2000	Integral	15.0 W	15.0 W	BOH	
R1B	8/3/2021	Recessed mounted 4" x 2" LED volumetric troffer	recessed	Lithonia	BLT' #BLT-T4-20LHE-ADSM-EZ1-LP830-CONTROLS	LED	3000	80	Non Dim	3300	Integral	23.0 W	23.0 W	BOH	
S1	5/12/2021	Surface mounted 4" diameter round LED downlight cylinder	pendant	Gotham	EVO' #EVO4SC-3010-AR-MWD-LSS-MVOLT-GZ10-JBXCC	LED	3000	80	Dimming	1000	Integral	8.8 W		Parking	
W1A	8/3/2021	Wall mounted 4" wide x 6" long linear LED direct/indirect fixture	wall	Lumenwerx	VIA4' #VIA4WDI-HLO-ARO-LED-80-500-750-30-8FT-UNV-D1-1-MOUNT-FINISH-CON-TROLS	LED	3000	80	Dimming	1250	Integral	12.0 W	72.0 W	Stairs	Mounting and Finish per Architect. Controls per Engineer. Provide occupancy sensor dimming for unoccupied stair dimming.
W1B	8/3/2021	Wall mounted 4" wide x 6" long linear LED direct fixture	wall	Lumenwerx	VIA4' #VIA4WD-HLO-LED-80-500-30-8FT-UNV-D1-1-MOUNT-FINISH-CONTROLS	LED	3000	80	Dimming	500	Integral	5.0 W	30.0 W	Stairs	Mounting and Finish per Architect. Controls per Engineer. Provide occupancy sensor dimming for unoccupied stair dimming.
W3	8/12/2021	Wall mounted LED jelly jar style sconce	wall	Oracle	#OVY-LED-1500L-MVOLT-30K-8Z-WM	LED	3000	80	Non Dim	1500	Integral	0.0 W	18.0 W	Tenant Shafts	Architect to confirm mounting and finish. Controls per Engineer.
W3A	8/12/2021	Wall mounted 30" x 42" backlit lighted mirror	wall	Electric Mirror	#SER2-30.00x42.00-LTCSHD-NB -30K	LED	3000	80	Non Dim	720	Integral	28.0 W	98.0 W	Core Bathrooms	
W3B	8/12/2021	Wall mounted 24" x 42" backlit lighted mirror	wall	Electric Mirror	#SER2-24.00x42.00-LTCSHD-NB -30K	LED	3000	80	Non Dim	720	Integral	28.0 W	98.0 W	Core Bathrooms	
W4	8/3/2021	Wall mounted 4" long linear fully enclosed and gasketed industrial strip fixture, NEMA 4x rated and IP67 rated	wall	Williams	#96-4-L40-8-30-HAFA-OPTIONS-CONTROL-UNV	LED	3000	80	Non Dim	4000	Integral	7.5 W	30.0 W	Transformer Vault	
W5	8/3/2021	Wall mounted dock/trailer LED fixture with adjustable arms and aimable fixture head	wall	Lithonia	#D5A-60-150L + LED PAR30 Lamp	LED PAR30 Lamp	3000	80	Non Dim	1500	Integral		20.0 W	Loading Dock	
YG1	5/12/2021	Ingrade 3" diameter round LED uplight, remote power supply, housing blackout. Exterior rated.	ingrade	iGuzzini	'Light Up Orb' #LUO 80-MO-830-WF-REM-13 + X195-02	LED	3000	80	Dimming	480	Remote		5.5 W	Site, Under Exterior Canopy	
YG2	5/12/2021	Ongrade 4" square x 16" tall pole, LED area light with type 3 optics. Exterior rated.	ongrade	Selux	'Arca' #ACAL-R3-S1-5G1350-30-FINISH-VOLTAGE-DM + 16R Square Pole	LED	3000	80	Dimming	2500	Integral	0.0 W	24.0 W	Site	
YG3	5/12/2021	Ongrade 4" square x 20" tall pole, (2) LED area light with type 3 optics, one fixture head at 0 degrees and one fixture head at 180 degrees in plan. Exterior rated.	ongrade	Selux	'Arca' #ACAL-R3-S2-5G1350-30-FINISH-VOLTAGE-DM + 20R Square Pole	LED	3000	80	Dimming	3500	Integral		72.0 W	Site	
YG4	5/12/2021	Stake mounted 2" diameter round LED floodlight with snoot, low voltage, and remote power supply. Exterior rated.	stake mounted	Hydrel	'Aspen' #ASPEN-A-P1-80CRI-30K-12-45DEG-WSL-KM-STK-CZ-FINISH + Remote Power Supply	LED	3000	80	Dimming	600	Remote		11.0 W	Planters	Remoted power supply locations to be coordinated in planters, exterior rated. Night aiming session needed for tree uplighting.
YG5	5/12/2021	Ongrade 2" tall pole (Somerville standard) with 24" diameter LED decorative street light (Somerville standard) with type 3 optics. Exterior rated.	ongrade	Stresscrete	'K06' #K06-P4FL-III-200-SSL-SERIES-VOLTAGE-KPL10-PHOTO CONTROL-3K-PAINT COLOR	LED	3000	80	Dimming	25000	Integral		200.0 W	Site	
YR1	5/12/2021	Recessed 4" round aperture accent adjustable downlight. Exterior rated for exterior canopy.	recessed	Gotham	'NICO7' #IC0A0J-3015-AR-CUTCONE-LSS-80D-VOLTAGE-GZ10-CONTROLS	LED	3000	80	Dimming	1350	Integral		15.1 W	Exterior Canopy	Voltage per Engineer.
YS1	5/12/2021	Surface mounted 1.5"x1.5" profile linear LED flood light. Exterior rated. Frosted Lens	surface	Ecosense	'Trov' #L50-E-48"-04-30-80-MULT-T120 + LENS-L50-FROST-48	LED	3000	80	Dimming	1000	Integral	4.0 W	16.0 W	Facade, Slot	Provide all necessary leader and jumper cables for a complete and operational light fixture assembly.
YS2	5/12/2021	Surface mounted 1.5"x1.5" profile linear LED flood light. Exterior rated.	surface	Ecosense	'Trov' #L50-E-48"-04-30-80-MULT-T25x75	LED	3000	80	Dimming	1000	Integral	4.0 W	16.0 W	Facade, Slot (Mechanical Zone)	Provide all necessary leader and jumper cables for a complete and operational light fixture assembly.
YS3A	8/12/2021	Surface mounted bendable LED tape/light with fully diffuse lens, mounting clips, and remote power supply. Exterior rated.	surface	Q'Tran	'Flex Meza' #FMZ-SW-P-WH-30-90-3-6-IM-CONNECTOR-10'-IM-CONNECTOR-LENGTH + Mounting Clips + Remote Power Supply	LED	3000	80	Dimming	100	Remote	3.6 W		Underbench	Integrated into underside of bench. Provide lengths and pattern per plans.
YS3B	8/12/2021	Surface mounted bendable LED tape/light with fully diffuse lens, mounting clips, and remote power supply. Exterior rated.	surface	Q'Tran	'Flex Meza' #FMZ-SW-P-WH-30-90-3-6-IM-CONNECTOR-10'-IM-CONNECTOR-LENGTH + Mounting Clips + Remote Power Supply	LED	3000	80	Dimming	100	Remote	3.6 W		Underbench	Integrated into underside of bench. Provide lengths and pattern per plans.
YS3C	5/12/2021	Surface mounted bendable LED tape/light with fully diffuse lens, mounting clips, and remote power supply. Exterior rated.	surface	Q'Tran	'Flex Meza' #FMZ-SW-P-WH-30-90-3-6-IM-CONNECTOR-10'-IM-CONNECTOR-LENGTH + Mounting Clips + Remote Power Supply	LED	3000	80	Dimming	100	Remote	3.6 W		Underbench	Integrated into underside of bench. Provide lengths and pattern per plans.
YS4	5/12/2021	Surface mounted 3" diameter LED cylinder downlight. Exterior rated.	surface	Tegan	'Monopoint' #EX5-K-2MP-DL-3S-FINISH + EX5-SLT-BLK + Remote Power Supply MOD-3000K LED	LED	3000	80	Dimming	450	Remote		6.5 W	Pavilion	
YS5	5/12/2021	Surface mounted 1.5"x1.5" profile linear LED flood light. Exterior rated.	surface	Ecosense	'Trov' #L50-E-48"-02-30-80-MULT-T25x75	LED	3000	80	Dimming	500	Integral	2.0 W	8.0 W	On Top of Exterior Canopy	Provide all necessary leader and jumper cables for a complete and operational light fixture assembly.
YW1	8/3/2021	Wall mounted 6" x 6" LED wedge uplight, with asymmetric optics	wall	Bega	#22433-K3	LED	3000	80	Dimming	2000	Integral		32.0 W	Penthouse Balcony	
YW2	8/3/2021	2" wide x 6" long mullion-mounted linear downlight	mullion	Visa	'Passage' #OW2484-L30K-LUM-FINISH	LED	3000	80	Dimming	1300	Remote	4.5 W	27.0 W	Egress	Mounting and Finish per Architect.

ELKUS | MANFREDI ARCHITECTS

74 Middlesex

Client
Gardner
69 Highland Street, Suite 1004
Boston, MA 02110

Geotechnical Engineer
Haley Aldrich
70 Beach St #204
Boston, MA 02109

Civil Engineer
VIRI
69 High Street, 10th Floor
Boston, MA 02110

Landscaping Architect
Mazzotta Fine Design
110 Beacon St #10
Boston, MA 02134

Structural Engineer
McDonough
101 Federal Street
Boston, MA 02110

MEP Engineer
BPA
10 Quail Street, 4th Floor
Boston, MA 02110

Code Consultant
Jacobs Engineering
45 East 20th Street
New York, NY 10003

LED / Environmental Consultant
Avalon Inc.
45 East 20th Street
New York, NY 10003

Building Envelope Consultant
Heston
400 Park Avenue South, 15th Floor
New York, NY 10003

Elevator Consultant
GSA
101 Summer Street, 4th Floor
Boston, MA 02110

Parking Consultant
GSDMHA Inc.
15 Tremont Street #200
Boston, MA 02108

Lighting Consultant
Lumina Partners
84 Summer Street
Cambridge, MA 02142

Wind Analysis
BPA
65 Broad Street, 10th Floor
Boston, MA 02110

Specifications
K&B Associates
1121 Washington Street #2
Boston, MA 02116

Facade Maintenance
Steel Engineering
100 Anna Street
New York, NY 10003

Signage
B&B Raster & Associates
40 Chandler Street
Cambridge, MA 02138

PROJECT NUMBER: 20128

DATE: 8/1/2021

REVISIONS:
1 8/1/2021

SEE PREVIOUS ISSUES FOR REVISIONS NOT LISTED HERE

SCALE:

DRAWING NAME:
LIGHTING FIXTURE SCHEDULE

DRAWING NUMBER:

1.12b

SITE PLAN APPROVAL



PROJECT NUMBER:

DATE:

REVISIONS:

1		
2		
3		
4		
5		
6		
7		
8		
9		
10		
11		
12		
13		
14		
15		
16		
17		
18		
19		
20		
21		
22		
23		
24		
25		
26		
27		
28		
29		
30		
31		
32		
33		
34		
35		
36		
37		
38		
39		
40		
41		
42		
43		
44		
45		
46		
47		
48		
49		
50		

SEE PREVIOUS ISSUES FOR REVISIONS NOT LISTED HERE

SCALE: 1"=10'

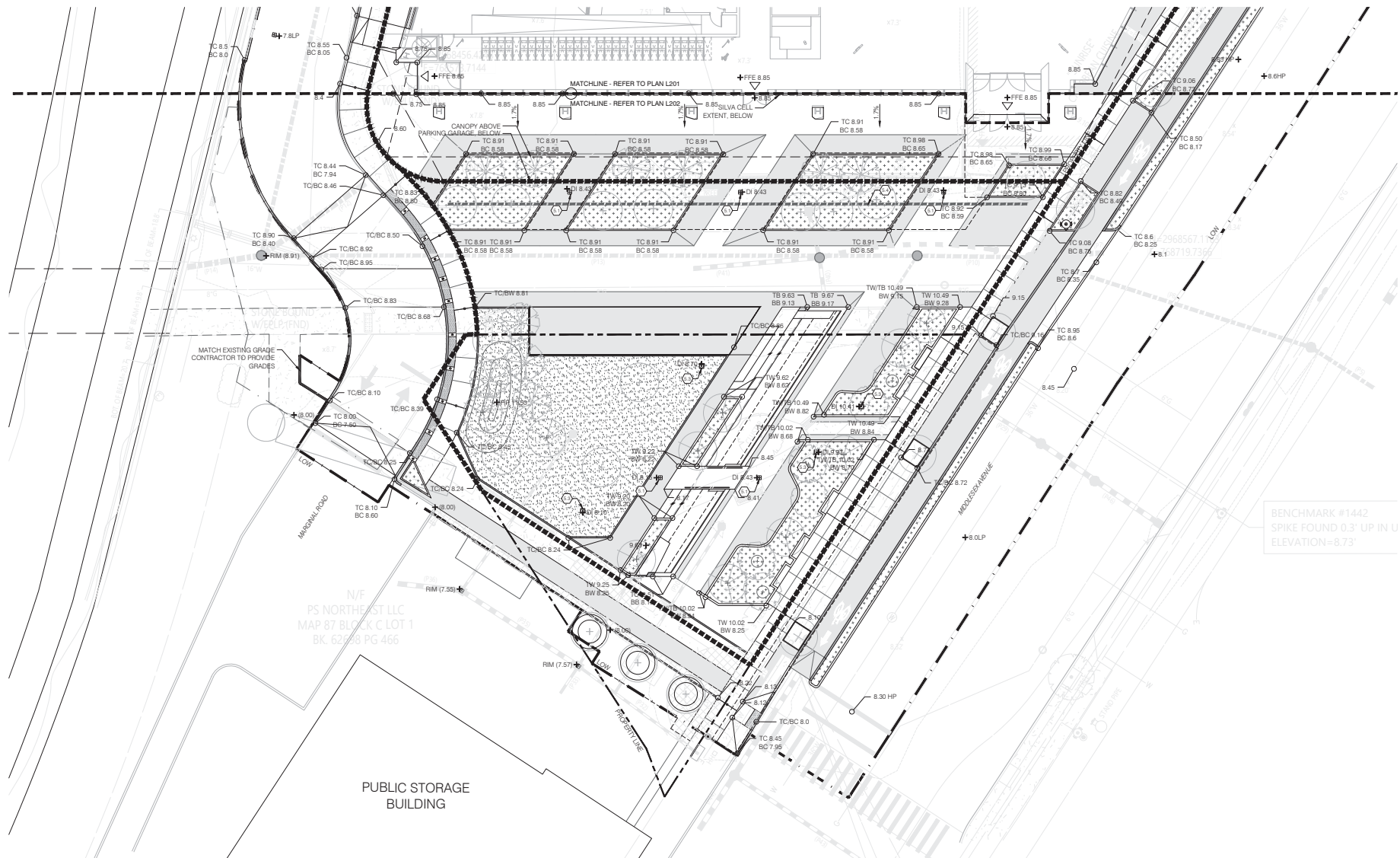
DRAWING NAME:

GRADING PLAN

NOT FOR CONSTRUCTION

DRAWING NUMBER:

1.13



GRADING PLAN LEGEND

- EXISTING CONTOUR
- PROPOSED CONTOUR
- (XXXX) EXISTING SPOT ELEVATION (N/F)
- (XXXX) PROPOSED SPOT ELEVATION
- +HP HIGH POINT ELEVATION
- +LP LOW POINT ELEVATION
- X/XX RATIO OF DOWN SLOPE (HORIZ/VERT)
- 0.00 DIRECTION/PERCENTAGE OF DOWN SLOPE
- GRADE BREAK
- BT BOTTOM OF TRENCH ELEVATION

GRADING PLAN KEY

- EXISTING/PROPOSED SITE CONDITIONS BY OTHERS
REFER TO LAYOUT AND MATERIALS PLAN L101-L103
- SURFACES, EDGING, AND CURBS
REFER TO LAYOUT AND MATERIALS PLAN L101-L103
- SITE ELEMENTS
REFER TO LAYOUT AND MATERIALS PLAN L101-L103
- SITE FURNISHINGS
REFER TO LAYOUT AND MATERIALS PLAN L101-L103
- DRAINAGE
 - 1 DRAIN TYPE 1 - AREA REFER TO CIVIL
 - 2 DRAIN TYPE 2 - TRENCH REFER TO CIVIL
 - 3 DRAIN TYPE 3 - OVERFLOW REFER TO CIVIL
 - 4 DRAIN TYPE 4 - DRAIN TILE 9/L510

GRADING PLAN NOTES

- REFER TO SHEET L000 FOR GENERAL GRADING NOTES.
- CROSS SLOPES AT ALL PAVED SURFACES SHALL NOT EXCEED 1.8%.
- LONGITUDINAL SLOPES SHALL NOT EXCEED 4.8%.
- REFER TO CIVIL FOR ALL STREET CURB, BIKE LANE AND STREET GRADES. ADVISE ASAP OF ANY DISCREPANCIES.

PUBLIC STORAGE BUILDING

N/F
PS NORTHEAST LLC
MAP 87 BLOCK C LOT 1
BK 6293 PG 466

2

Zoning Compliance Narrative

This chapter briefly describes how Civic Space 1 complies with applicable provisions of the Zoning Ordinance.

2.1 ARTICLE 13: PUBLIC REALM

13.1.1 Development Review

a. The development of any civic space requires Site Plan Approval followed by a Civic Space Permit, in accordance with Chapter 15: Administration, and is exempt from Chapter 11, Article II, Sec. 11-33(b) of The Code of Ordinances, City of Somerville, Massachusetts.

This DRA is to initiate the Site Plan review and approval process for the Neighborhood Park.

b. All development, excluding normal maintenance, requires the submittal of a development review application to the Building Official and the issuance of a Certificate of Zoning Compliance prior to the issuance of a Civic Space Permit.

The Proponent will seek a Civic Space Permit after issuance of the Certificate of Zoning Compliance is issued.

13.1.3 Parks

a. A Park is a Civic Space type designed for active and passive recreation, with its character defined by the uses and features provided to meet the needs of different user groups. There are four subtypes of parks: a Regional Park, a Community Park, a Neighborhood Park, and a Pocket Park.

The Project is most consistent with the Neighborhood Park type. The summary in Table 1-1 of Chapter 1, *Project Description*, outlines the Neighborhood Park's conformance to key provisions of Section 13 of the Ordinance.

13.1.3 General to all Parks

b. All development, excluding normal maintenance, requires the submittal of a development review application to the Building Official and the issuance of a Certificate of Zoning Compliance prior to the issuance of a Civic Space Permit.