

OVERALL AREA:
2403 SQ FT.

WASHINGTON STREET

CC:

DiMella Shaffer
Architecture | Interior Design | Planning
281 Summer Street
Boston, MA 02210
Tel. 617.426.5004
Fax 617.426.0046

UNION SQUARE
HOUSING
181 WASHINGTON ST.

Project number 2011069.07
Date 01/22/16
Scale 1/8" = 1'-0"
Drawn By Author
Ref ASI#
Ref RFI#
Re: Drawing #

FFE-1.0

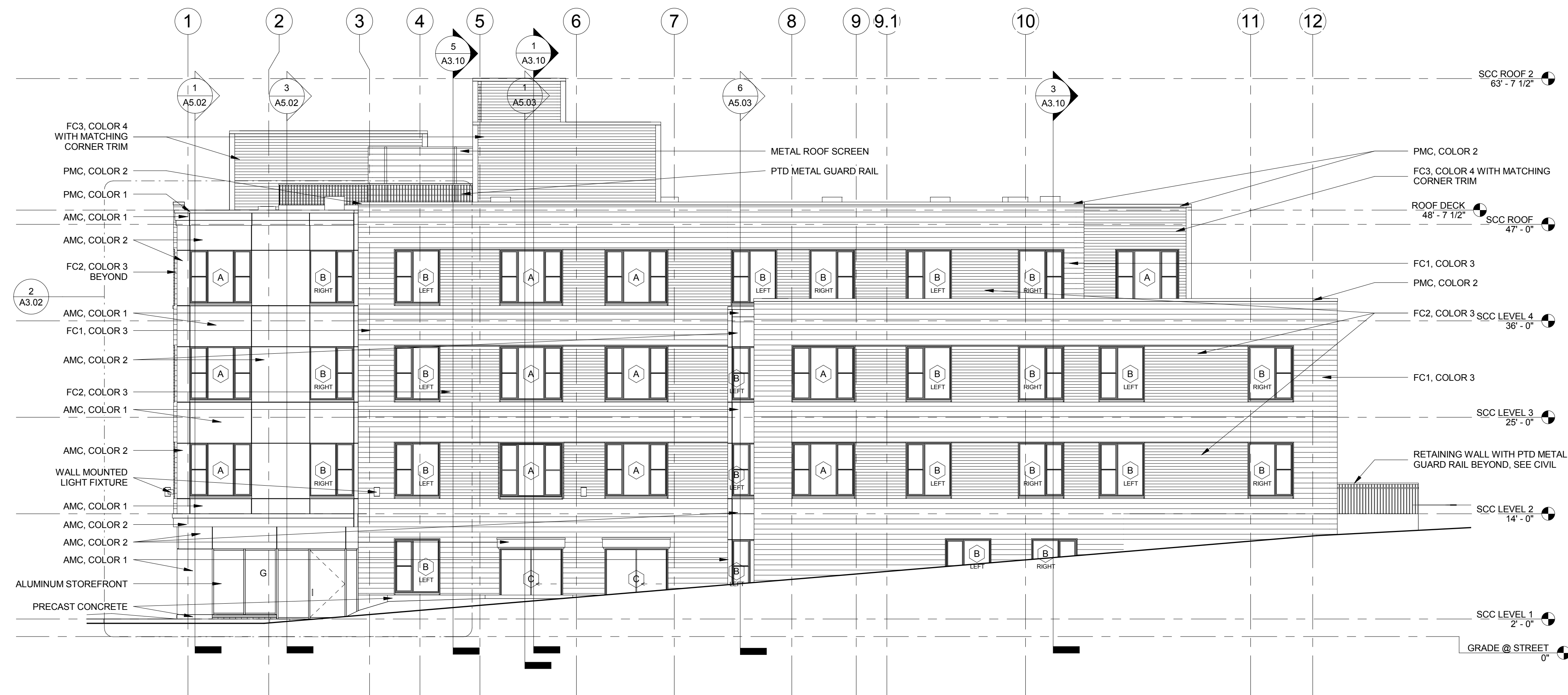
Client
 SCC LLC (774) 255-0157

STRUCTURAL
 L A Fuess Partners, Inc. (617) 948-5700

CIVIL ENGINEER
 Design Consultants, Inc. (617) 776-3350

MEPPP
 R W Sullivan Engineering (617) 523-8227

LANDSCAPE
 Terralink (617) 650-7398



2 EAST ELEVATION
 1/8" = 1'-0"



1 SOUTH ELEVATION
 1/8" = 1'-0"

CONSTRUCTION DOCUMENTS / PERMIT SET

CD / PERMIT SET	AUGUST 1, 2014
DESIGN DEVELOPMENT	JUNE 4, 2014
PLANNING BOARD	REV JANUARY 31, 2014
Issue Description	Date

Scale:
 1/8" = 1'-0"

Drawn By: _____ Checked By: _____ Reviewed By: _____
 Author: _____ Checker: _____

Project No. 2011069.07

UNION SQUARE HOUSING

181 Washington Street, Somerville, MA 02143

EXTERIOR ELEVATIONS

EXTERIOR ELEVATIONS LEGEND

TYPE	DESCRIPTION
AMC	ALUMINUM METAL COMPOSITE (COLOR AS SPECIFIED)
FC1	HARDIE ARTISAN FIBER CEMENT, 7" EXPOSURE (COLOR AS SPECIFIED)
FC2	HARDIE ARTISAN FIBER CEMENT, 4" EXPOSURE (COLOR AS SPECIFIED)
FC3	HARDIE PLANK FIBER CEMENT, 4" EXPOSURE (COLOR AS SPECIFIED)
PMC	PERFORMED METAL COPING (COLOR AS SPECIFIED)

A3.00

C:\Users\skernizan\Documents\2011069 UNION SQUARE SCC NEW-CENTRAL_skernizan.rvt