

The image shows the exterior of West Somerville Neighborhood School, a multi-story brick building with large windows. In the foreground, there is an outdoor basketball court with a red and green court surface and a basketball hoop. A person is visible on the court. The sky is blue with some clouds. The text is overlaid on the top right of the image.

Community Meeting #1

West Somerville


Neighborhood School

Somerville, MA

AGENDA

- Introductions
- Design Schedule
- Similar Past CBA Projects
- Existing Conditions & Site Analysis
- Program Possibilities
- Questions for Discussion

December 11, 2019

An architectural rendering of a school building and its courtyard. The building is a two-story brick structure with large, multi-paned windows. In the foreground, there is a basketball court with a red and green surface, a hoop, and a bench. A small tree and a table with chairs are in the courtyard area. In the background, there is a white building and a fence. The sky is blue with some clouds.

PROJECT OVERVIEW

INTRODUCTIONS

City of Somerville

Arn Franzen, Senior Project Manager, Public Space & Urban Forestry

CBA Landscape Architects LLC

D.J. Chagnon, Principal-in-Charge & Project Manager

Kaila Bachman, Project Manager

Jessica Choi & Liz Thompson, Staff Landscape Designers

Preliminary Community Meeting (December 2018, held by the City): Collected community input about desires for the schoolyard redesign.

WSNS Staff Input Session (November 5, 2019): Met with school faculty during a Professional Development day to receive input about schoolyard issues and concerns.

Community Meeting 1 (December 11, 2019): Present site analysis and precedents. Present rough conceptual designs based on previous community input process by the City, and develop with list to guide Schematic Designs for future meetings.

Community Meeting 2 (January 2020): Present Schematic Design Alternatives based on first meeting input. Community review and discussion, with the goal of developing a final Preferred Design Plan.

Community Meeting 3 (February/March 2020): Present Definitive Design for Schoolyard construction, including features and site furnishings based on community discussion at Meeting 2. With community input, discuss project budget, bidding process, suggested Alternates, and prioritize strategy to maximize budget.

Construction Documents (Spring 2020): CBA will finalize Definitive Design and suggested Alternates into detailed Construction Documents suitable for bidding purposes.

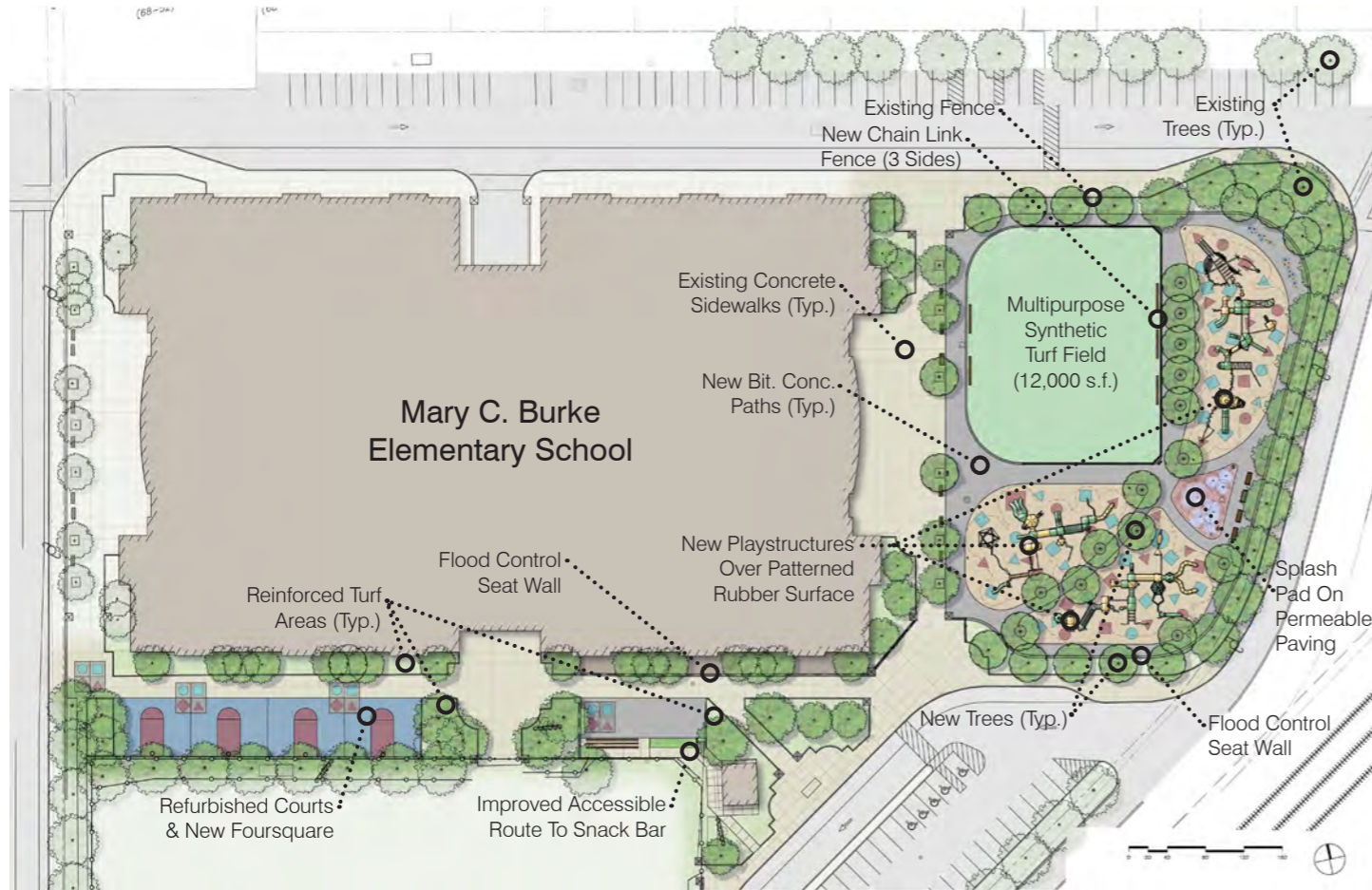
Construction Start: Schedule to be determined by funding availability



SIMILAR PAST CBA PROJECTS

MARY C. BURKE SCHOOLYARD - CHELSEA

SIMILAR PAST CBA PROJECTS



Illustrative Plan of Phase 1 Construction(CBA)



Rendering of the playstructures and the synthetic turf multipurpose field (prepared by play equipment manufacturer)

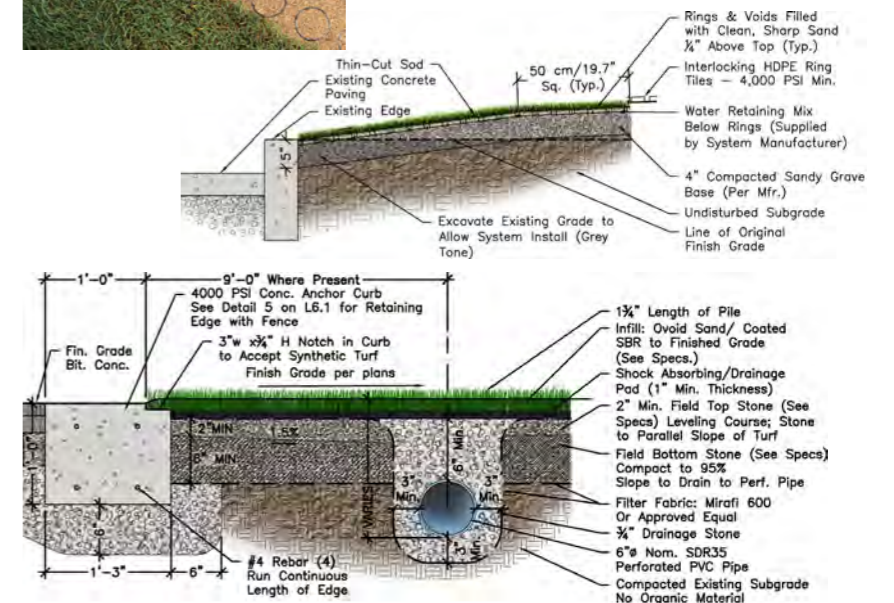


Diagram of flood control measures



Left & Middle: Detail of lawn reinforcement for high wear areas (detail by CBA; product image from manufacturer)

Bottom: Synthetic Turf Field detail

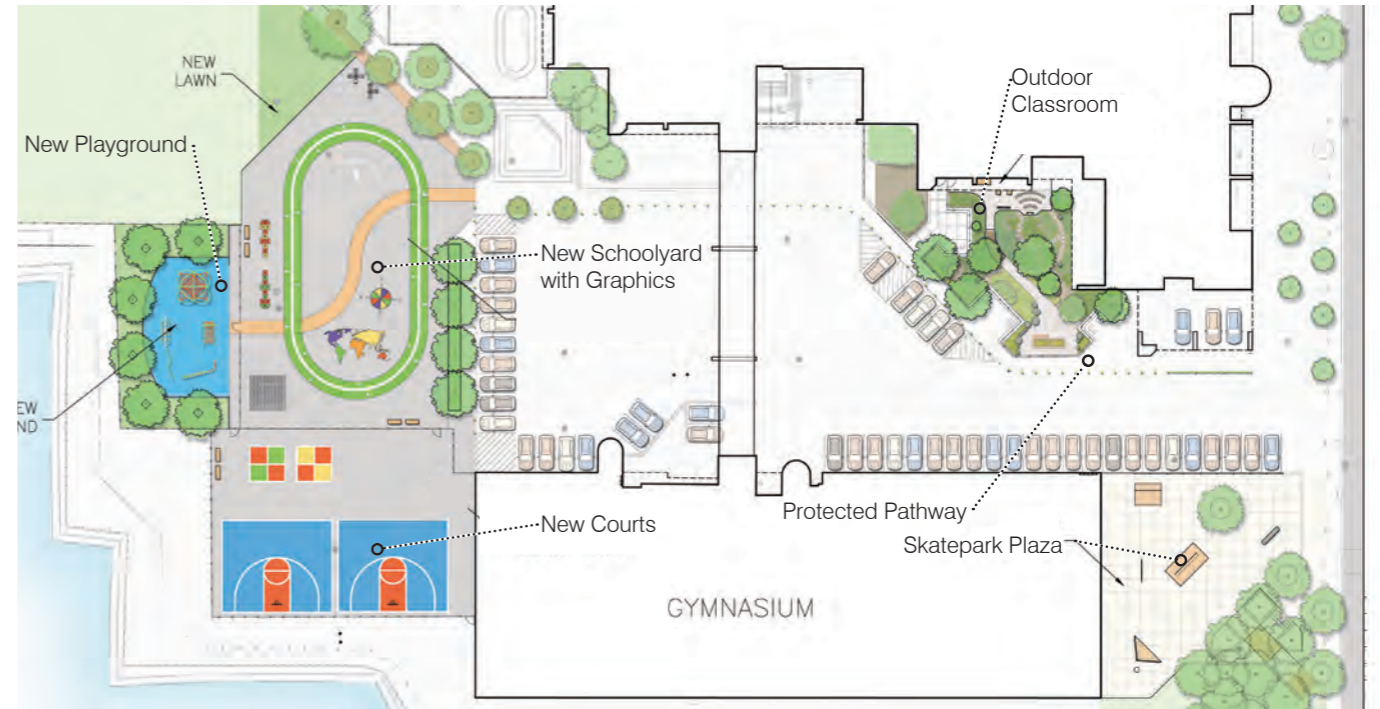


MARIO UMANA SCHOOLYARD - EAST BOSTON

SIMILAR PAST CBA PROJECTS



The new climbing structure and painted schoolyard.



The rendered Landscape Master Plan.

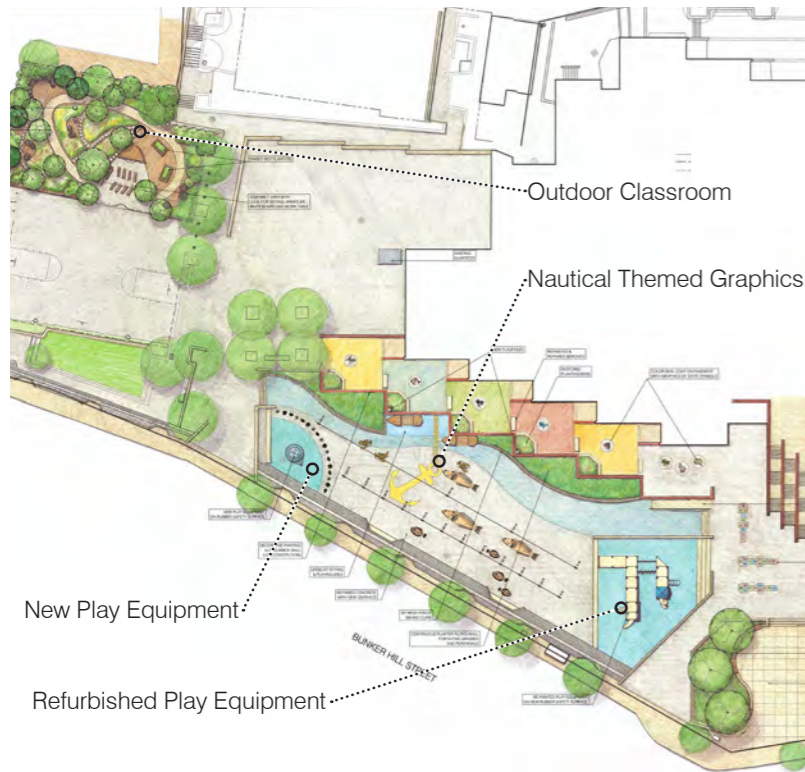


View of the outdoor classroom, showing the peastone path, boardwalk, weather station, storage, and pulley system.



Rendering of the new outdoor classroom.

HARVARD KENT SCHOOLYARD - CHARLESTOWN SIMILAR PAST CBA PROJECTS



Rendering of the proposed landscape master plan.



Raised plant beds and classroom gathering area beyond. Raised plant bed with viewing window and thermometer.



New playground equipment showing the net climber in the foreground.



Nautical themed play graphics.

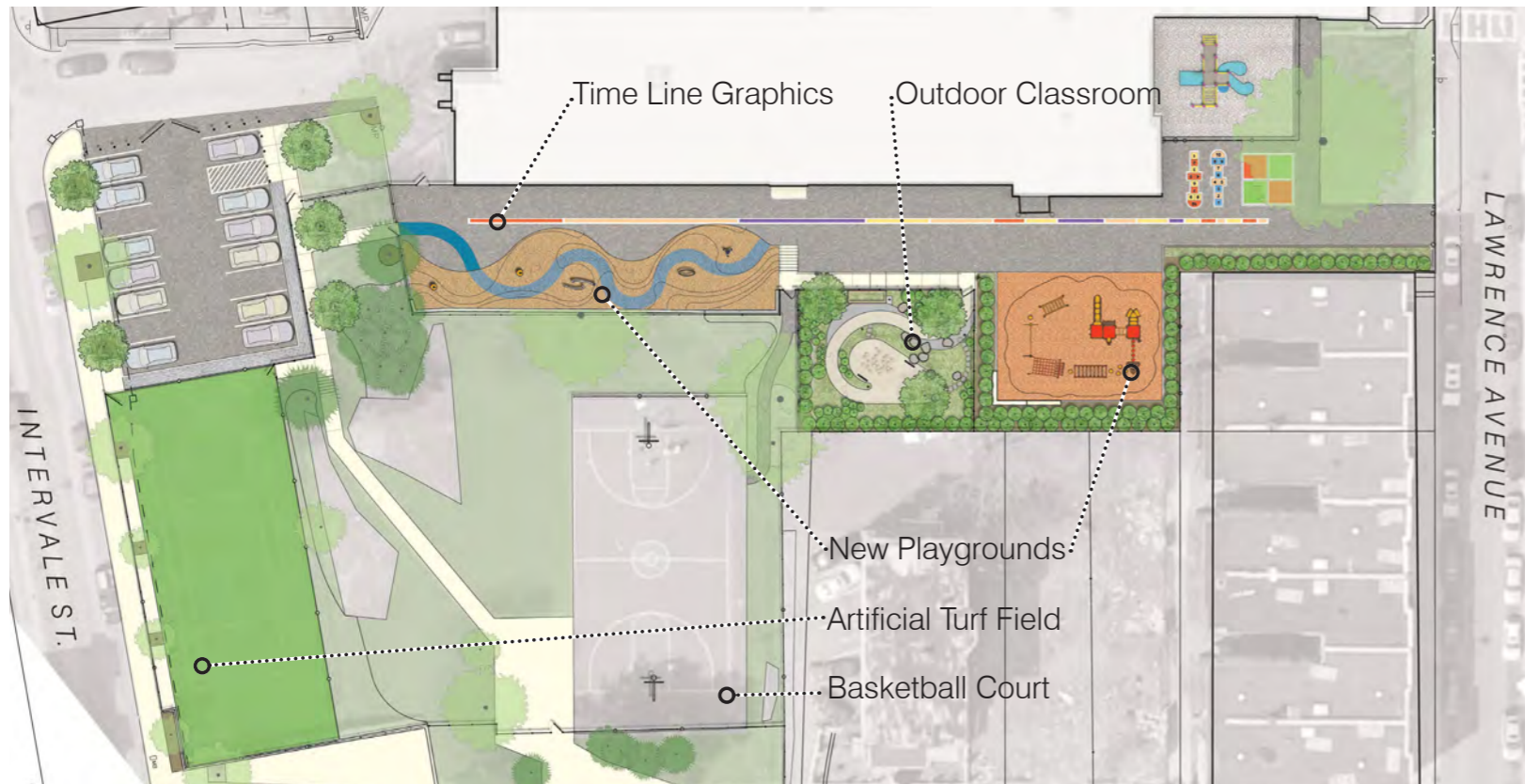


Entry plaza seating area.



Plan of the outdoor classroom.

Dr. MARTIN LUTHER KING JR. SCHOOLYARD - DORCHESTER SIMILAR PAST CBA PROJECTS



Rendered Landscape Master Plan for the schoolyard.



Looking down the stepping stone path in the outdoor classroom.



New play equipment.



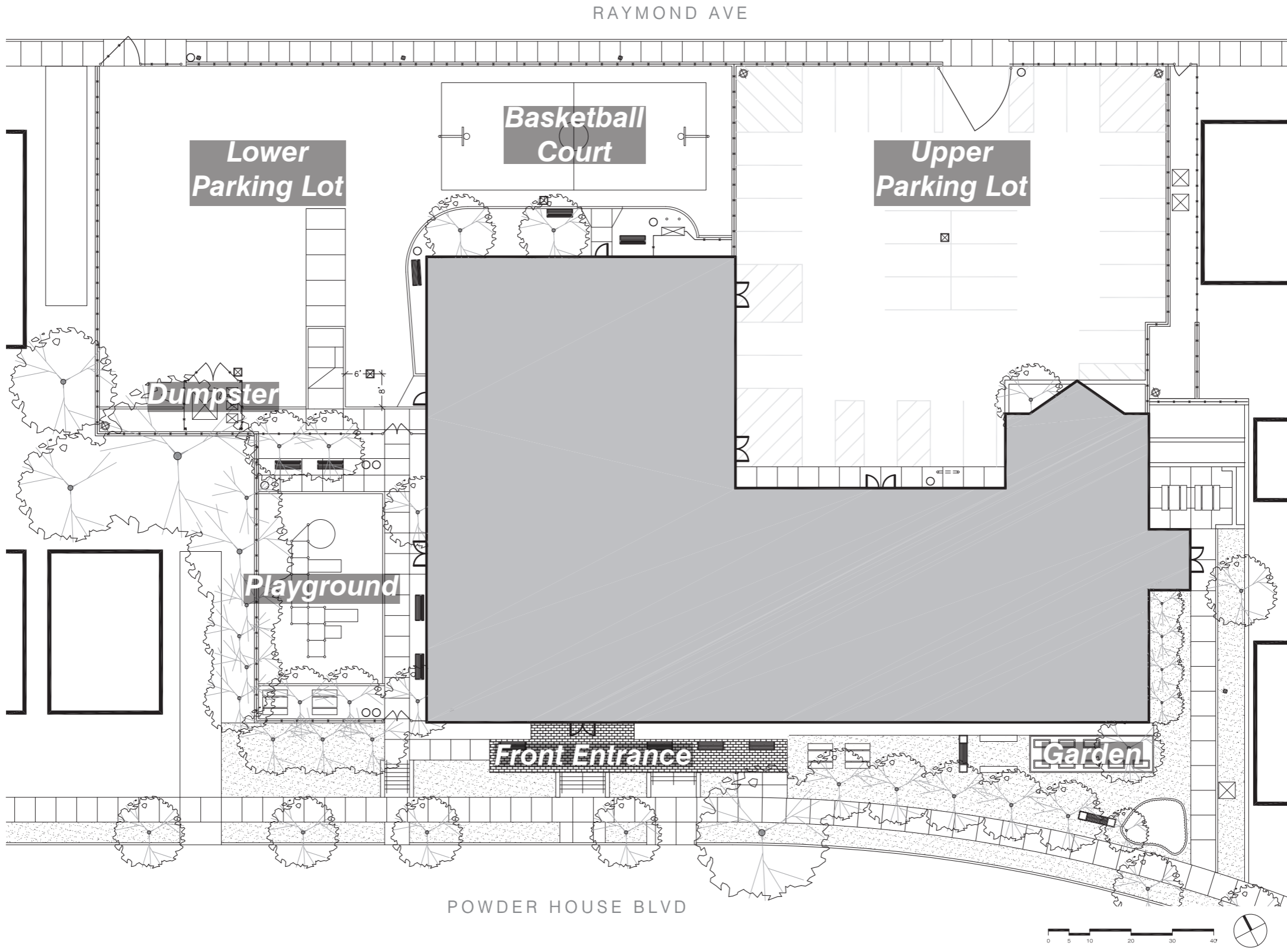
The new turf field provides a low-maintenance play space



View of the playground from the outdoor classroom.



EXISTING CONDITIONS & SITE ANALYSIS





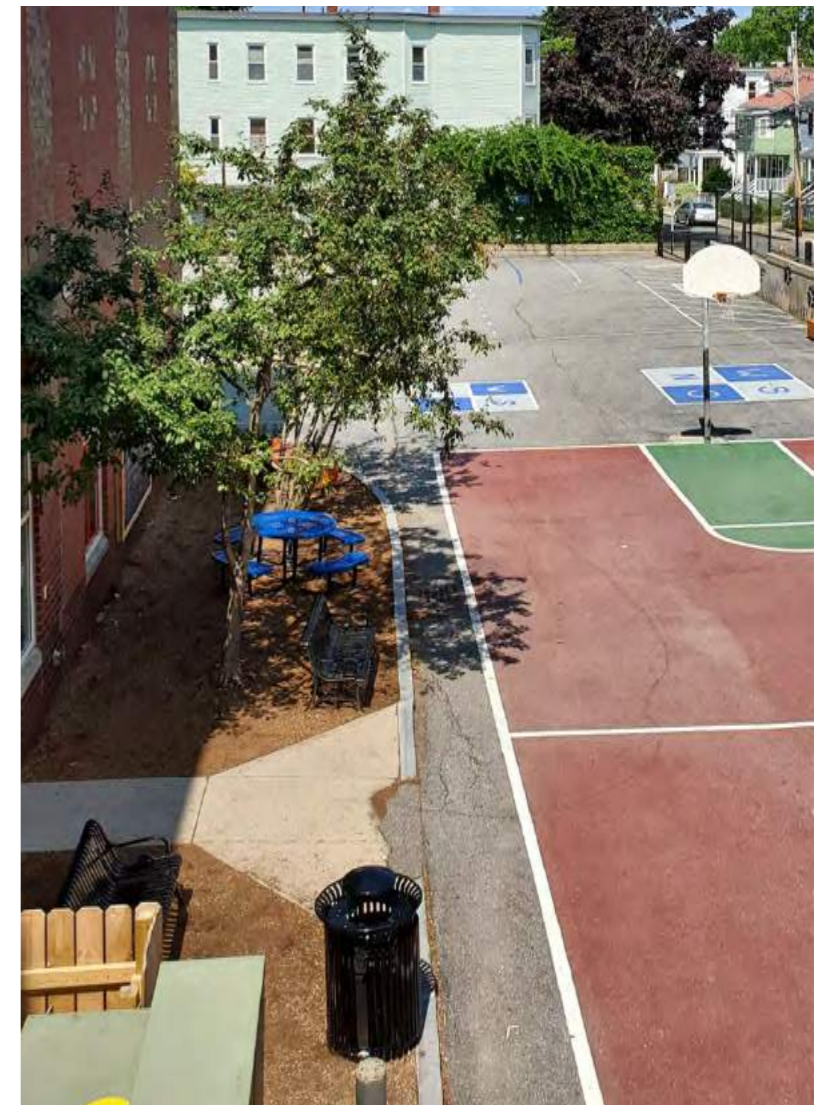
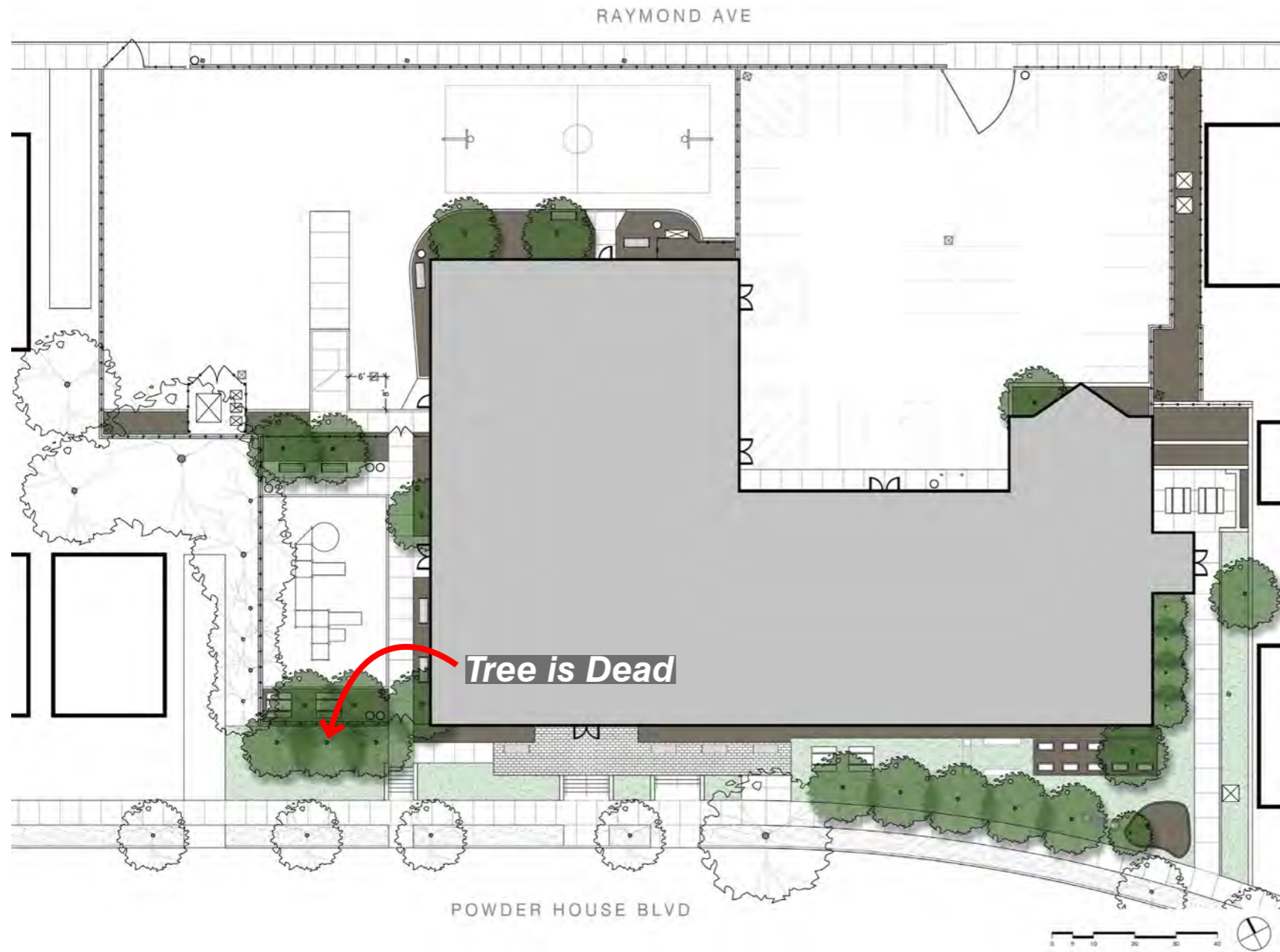
SURFACE MATERIAL

EXISTING CONDITIONS & SITE ANALYSIS



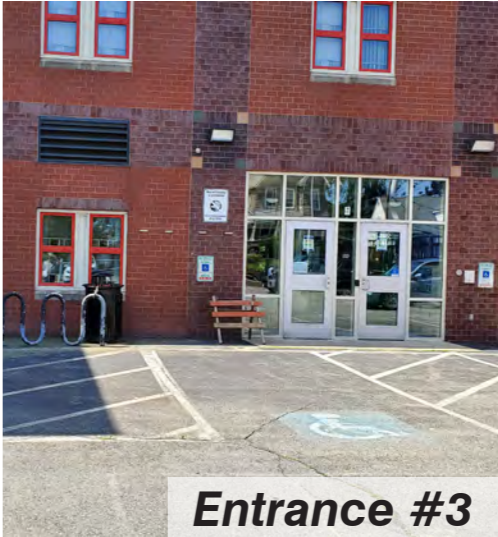
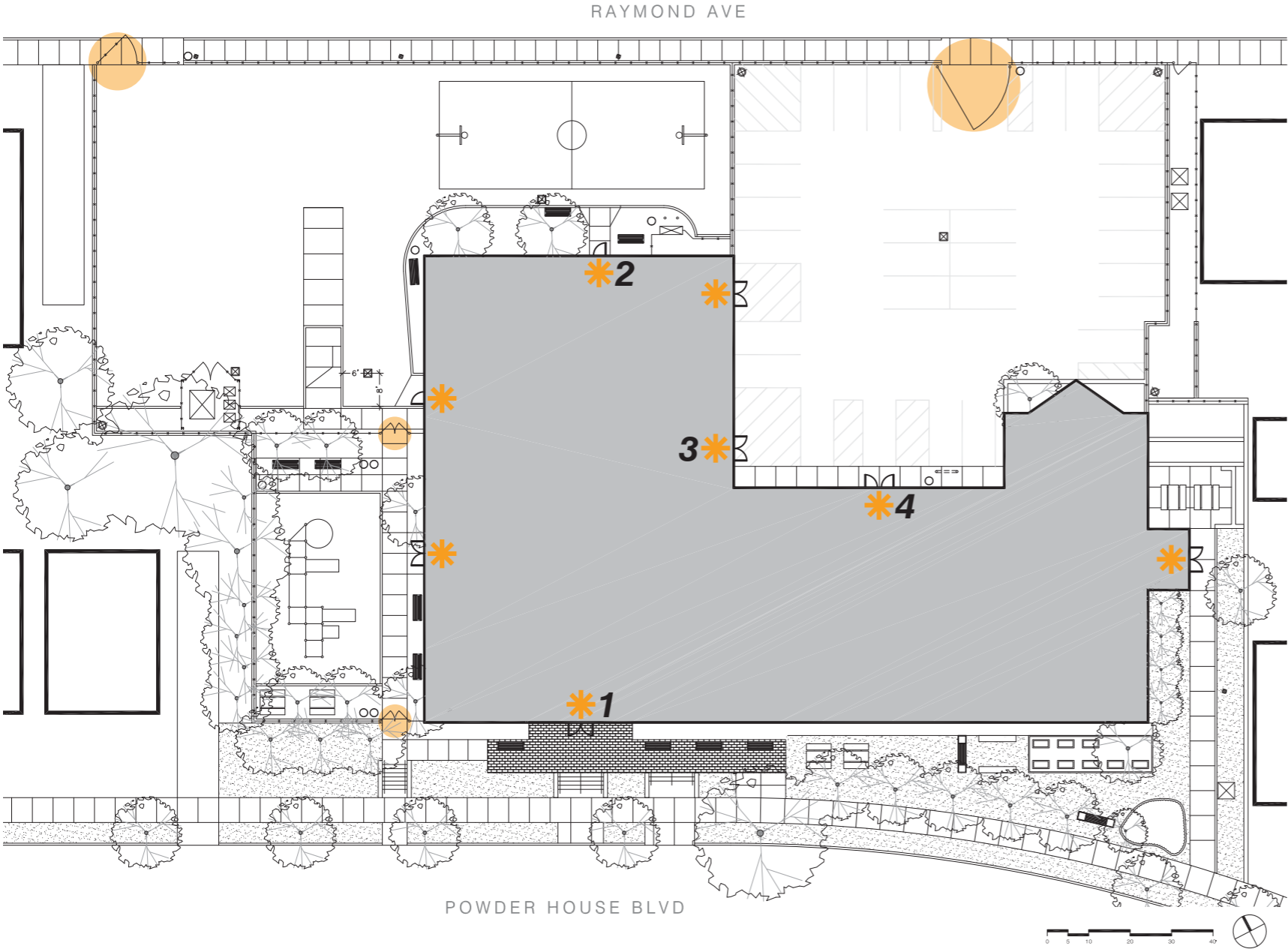
PLANTINGS

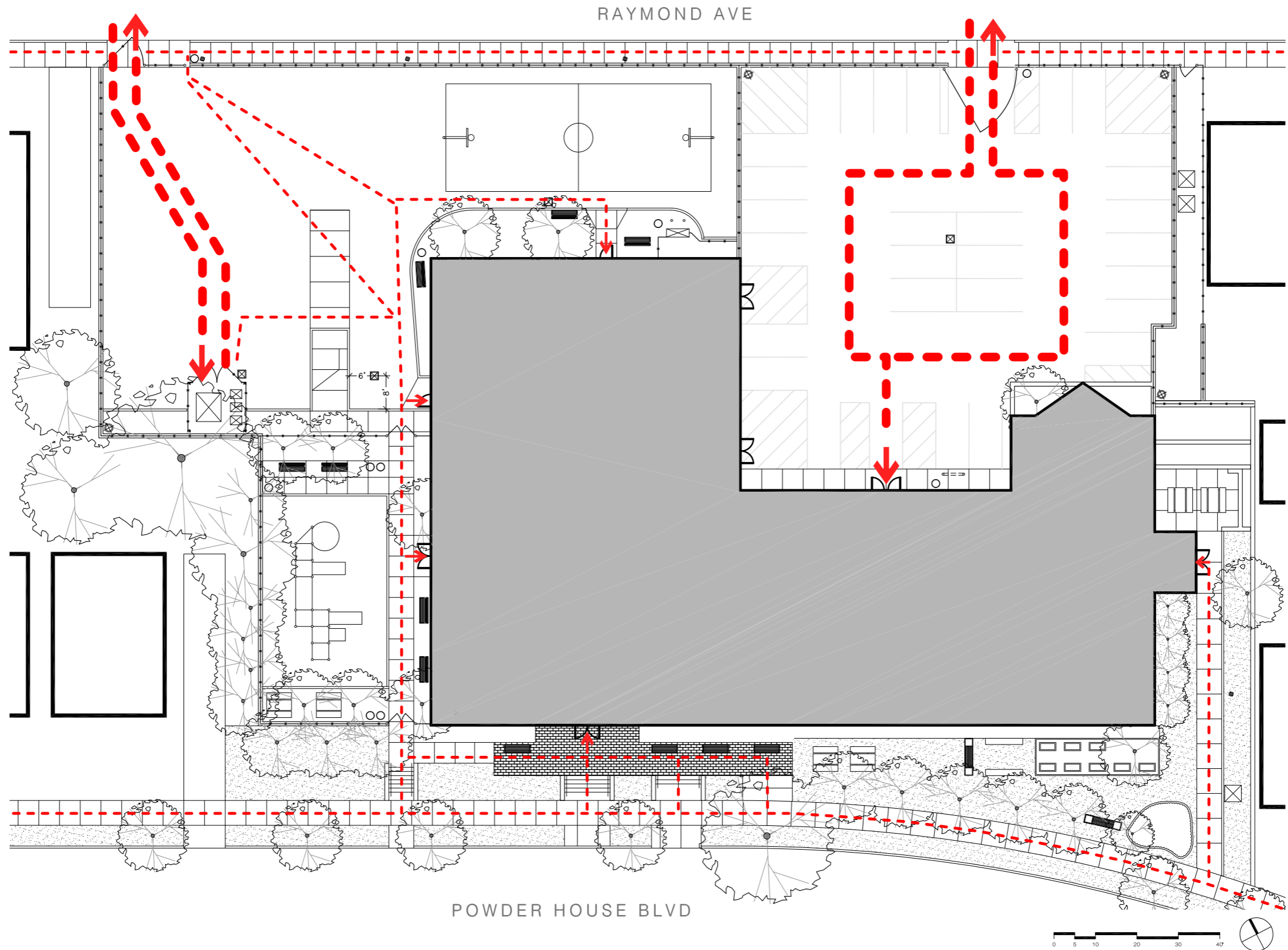
EXISTING CONDITIONS & SITE ANALYSIS



ACCESS & ENCLOSURE

EXISTING CONDITIONS & SITE ANALYSIS





Play Structures:

- The site's playstructures are appropriate for Pre-K through 1st; older kids are currently relegated to the blacktop
- Consider a parkour-style structure
- Explore a climbing wall as a way of incorporating the retaining walls
- A large climbing structure (like at North Street Playground) with slide could work
- Other neighborhood playgrounds have preschool-age equipment; focus on school-age kids here
- Include swings, slides (several), climbers, and upper body / fitness equipment
- Early grades (1-5) need playstructures but older kids often stop using them
- Strong faculty support for rubber (not wood chips) as safety surfacing
- Physical separation of structures for the different age ranges is important

Sports:

- Keep basketball - at least a full half court
- Support for the layout at North Street, which has a multisport goal
- Consider parkour / exercise equip't
- Support for synthetic turf for ball sports - emphasis on safe technologies
- Turf area doesn't need to be as large as the asphalt play area is
- Foursquare is highly used - kids line up for the "best" court, so only 1 is needed
- Be able to accommodate practices for youth sports and other organizations (including bike safety training program)

Multifunctional Space:

- Incorporate outdoor classroom space
- Consider space to eat outside
- Students need a place to sit where they're protected from flying balls
- Remember space is open to neighborhood outside school hours
- Design with lineup in mind
- Protect / screen the kindergarten classroom windows - other classes at recess often are distracting at them
- "Mindful walking" path

Green Space:

- Add trees for more shade (but remember that small trees get climbed or broken)
- Increase permeable surfaces
- Include natural materials and areas

Possibilities for the Big Wall:

- Climbing Wall
- Stadium Seating
- Stepped levels to create "rooms"
- Play features (such as slide) using the grade change
- Artwork / Murals (like it is now) especially for school spirit

Inclusive Design:

- Involve kids in the design process - STEAM education opportunity
- Space should be appropriate for all ages - neighborhood park outside school hours
- Protected / shelter-space within play area

Parking and Vehicles:

- Parking should be confined to the parking lot; keep it separate from the schoolyard
- Add shade trees to the parking lot
- The dumpster should be separate from the play area; balls go in it
- Remove vestiges of old parking lot from the play area
- Consider deliveries and fire access, but prioritize kid uses

Other Features:

- Pavilion or other shade structure
- Include lighting at levels / directions appropriate to the space
- Need to keep balls from going out both above and below fences and at entries (as well as some kids that tend to run)
- Explore expanding schoolyard out toward Powderhouse Blvd - cantilever platform?
- Equipment storage shed

Other Considerations:

- Include DPW in the conversation, especially about snow removal
- Improve parking situation / opportunities in the neighborhood, not the schoolyard
- Need a safe pedestrian path to Raymond Ave - currently ball sports in that area cause problems
- The current playstructure area is a wind tunnel, icy in the mornings, and also a main path to the street
- Use the "alleyway" for something constructive (on the east side of school); currently kids climb the fence there
- Improve grading and drainage

An architectural rendering of a school building and an outdoor basketball court. The building is a two-story brick structure with large, multi-paned windows. In the foreground, there is an outdoor basketball court with a reddish-brown surface and green key areas. A person is visible on the court. To the left of the court, there is a small landscaped area with a tree, a bench, and a trash can. The sky is blue with some clouds.

PROGRAM POSSIBILITIES

PLAY EQUIPMENT

PROGRAM POSSIBILITIES



Gramstorff Park - Everett



Roberts Playground - Dorchester



Choate Park - Medway



Morris Playground / Keverian School - Everett

DRAMATIC/IMAGINATIVE PLAY

PROGRAM POSSIBILITIES



Morris Playground / Keverian School - Everett



Broadmoor Wildlife Sanctuary - Natick



Gibbons Playground - Boston



Choate Park - Medway

OUTDOOR CLASSROOM

PROGRAM POSSIBILITIES



Harvard Kent Schoolyard - Charlestown



Dr. Martin Luther King Jr. Schoolyard - Dorchester



Alma Del Mar - New Bedford

HARD COURT SPACE

PROGRAM POSSIBILITIES



Clapp Park - Woburn



Morse-Kelley Playground - Somerville



Dr. Martin Luther King Jr. Schoolyard, Dorchester



**East Somerville Community School - East Somerville (photo by CBA)*

**(not a CBA project)*

GATHERING SPACE

PROGRAM POSSIBILITIES



Harvard Kent Schoolyard - Charlestown



Kenney Park - Somerville



South Plaza - Cambridge



Gramstorff Park - Everett



Monsignor Reynolds Playground - South End



Box District Park - Chelsea



Harvard-Kent Elementary School - Charlestown



Dr. Martin Luther King Jr. Schoolyard - Dorchester



Joyce Kilmer Upper School - West Roxbury



Eliot School - Boston

ADDITIONAL ELEMENTS

PROGRAM POSSIBILITIES



Water Fountain / Bottle Filler
Paris Street Playground - East Boston



Fencing and Shade Structures
Gramstorff Park - Everett



Contemporary Lighting
Deanna Cremin Playground - Somerville



*Sensory Play Wall
(Image from Landscape Structures)



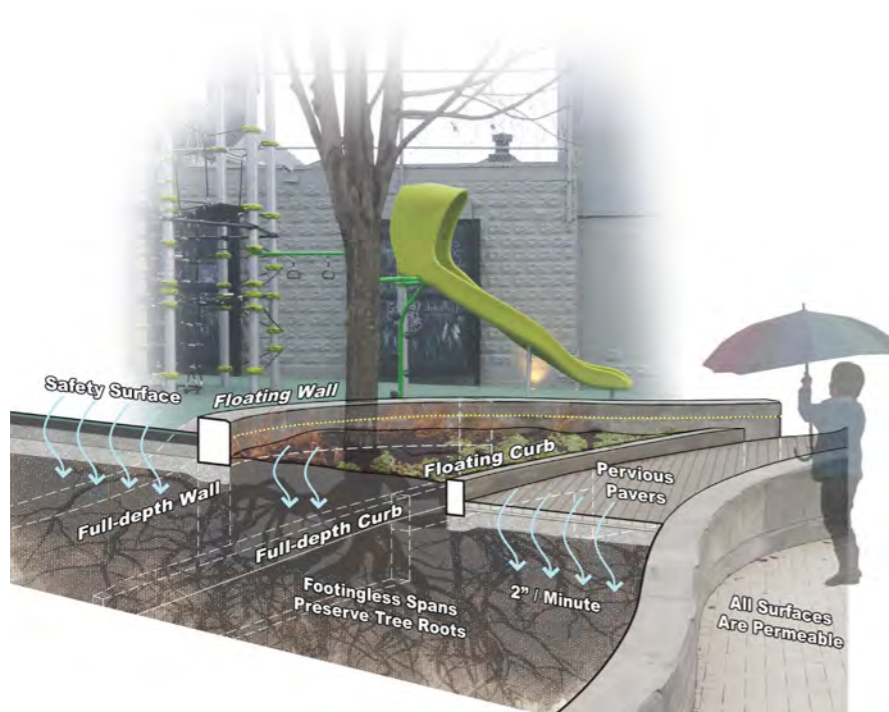
Bicycle Track
O'Day Playground, South Boston



*Outdoor Chalkboards
(Image from Kid Somania) *(not a CBA project)



**Graphic from San Francisco Public Utilities Commission*



Sustainable Features Photo-diagram

Cremin Playground - Somerville



**New Lots School Campus - Brooklyn
(Image from East New York)*

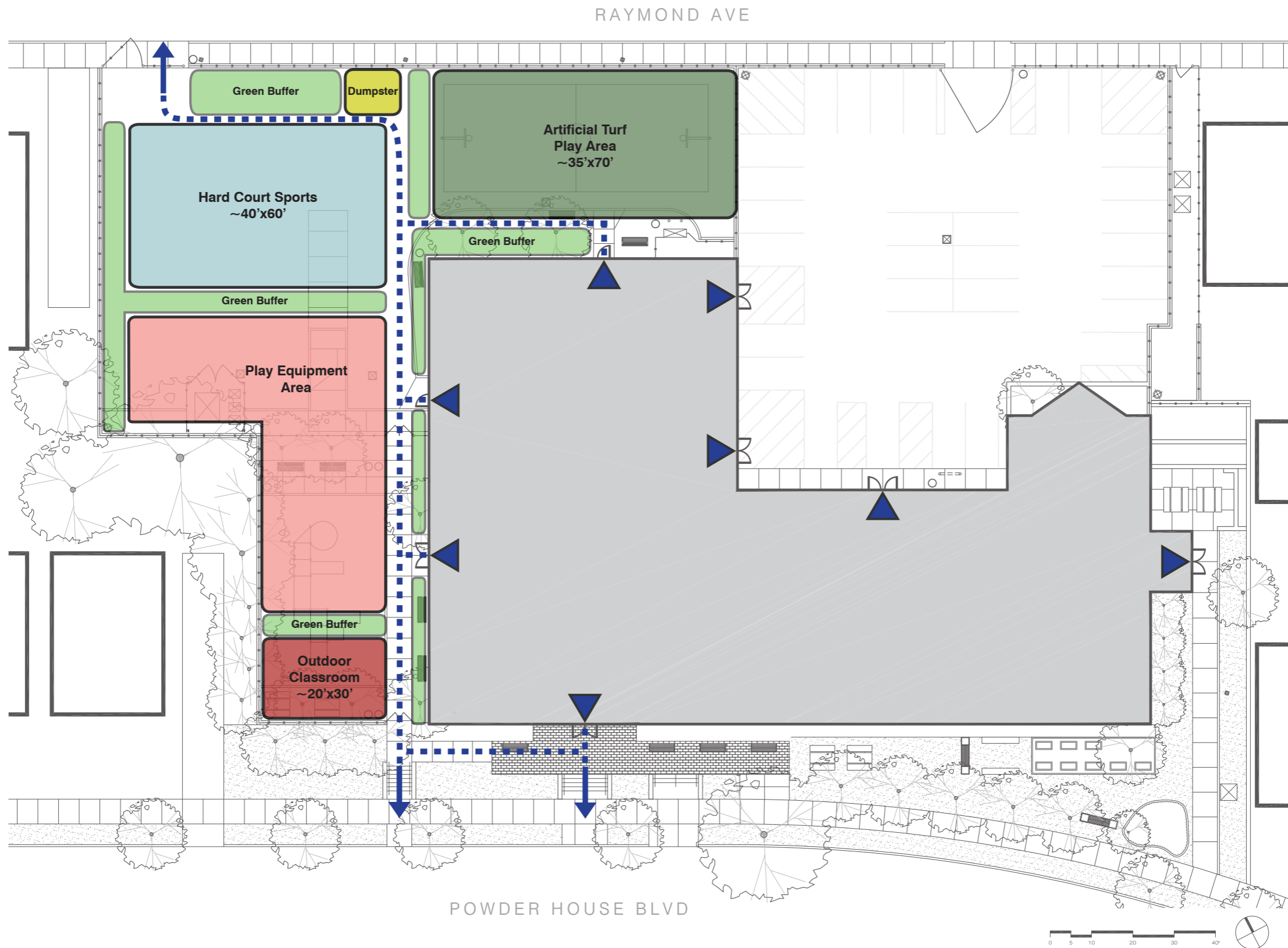
**(not a CBA project)*

An architectural rendering of a school building and its outdoor courtyard. The building is a two-story brick structure with several large, multi-paned windows. In the foreground, there are two basketball courts with red and green surfaces. A person is visible on the court in the background. The sky is blue with some clouds. The overall scene is bright and sunny.

CONCEPTUAL LAYOUTS

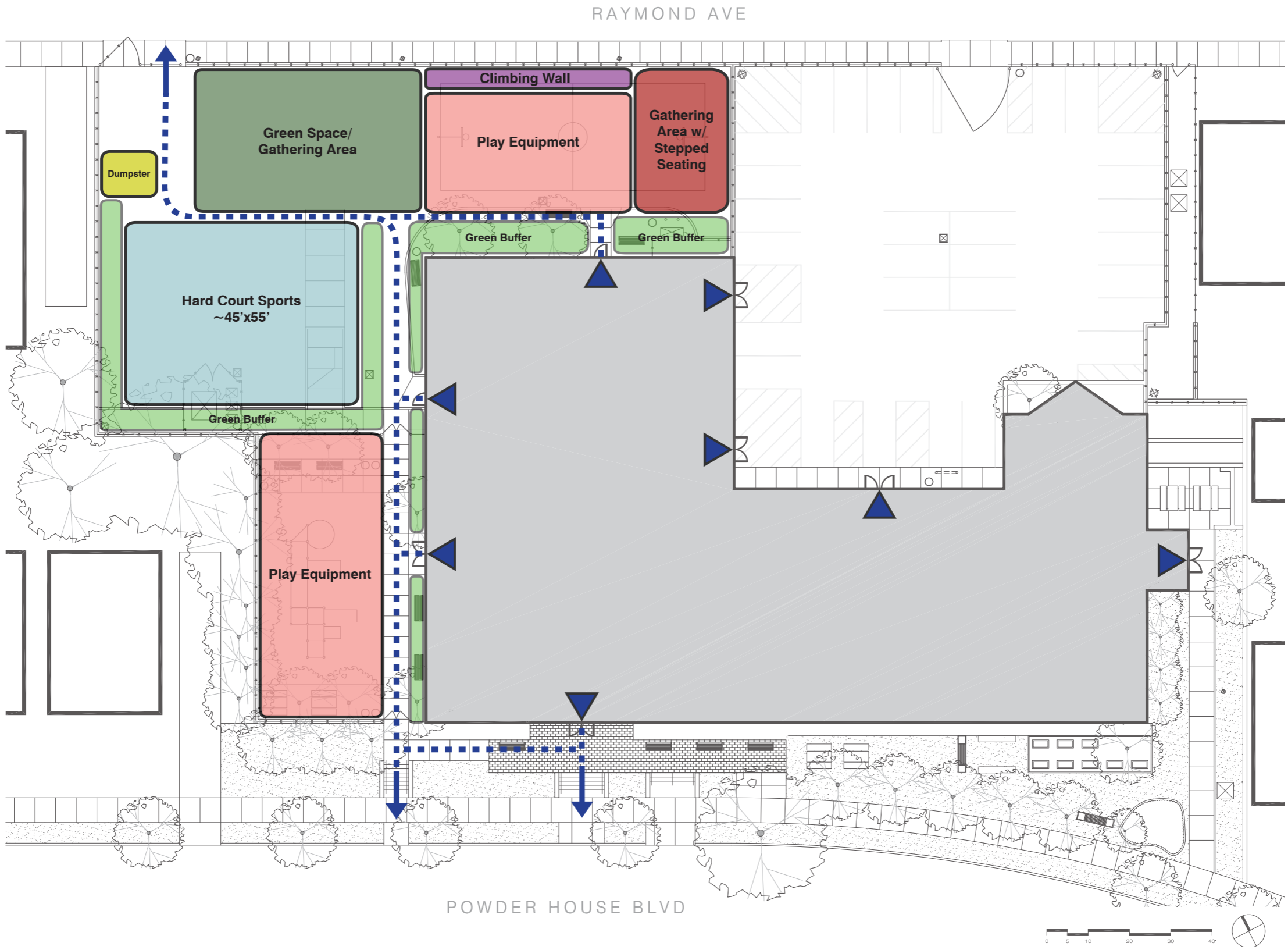
OPTION ONE

PROGRAMMATIC POSSIBILITIES



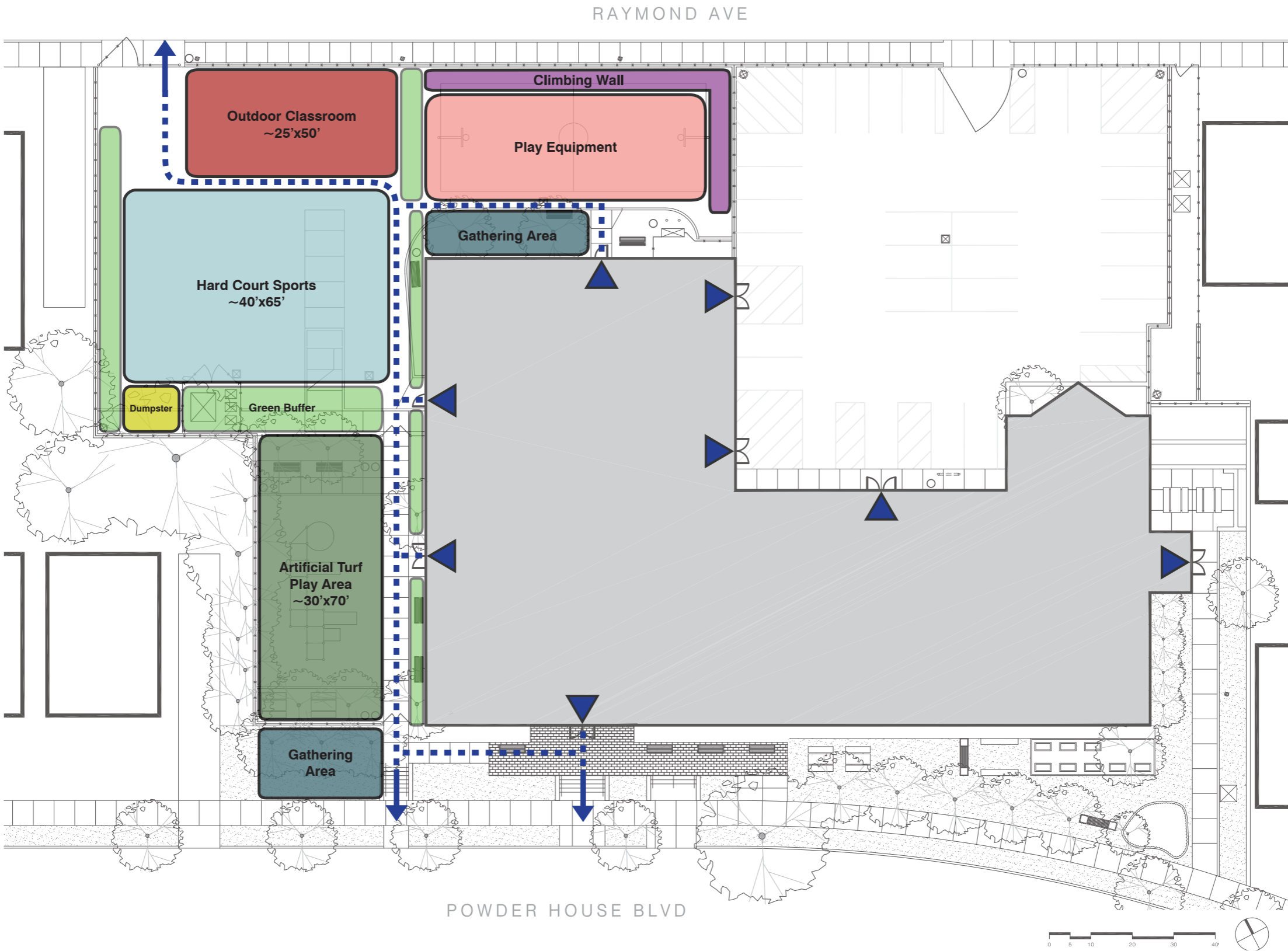
OPTION TWO

PROGRAMMATIC POSSIBILITIES



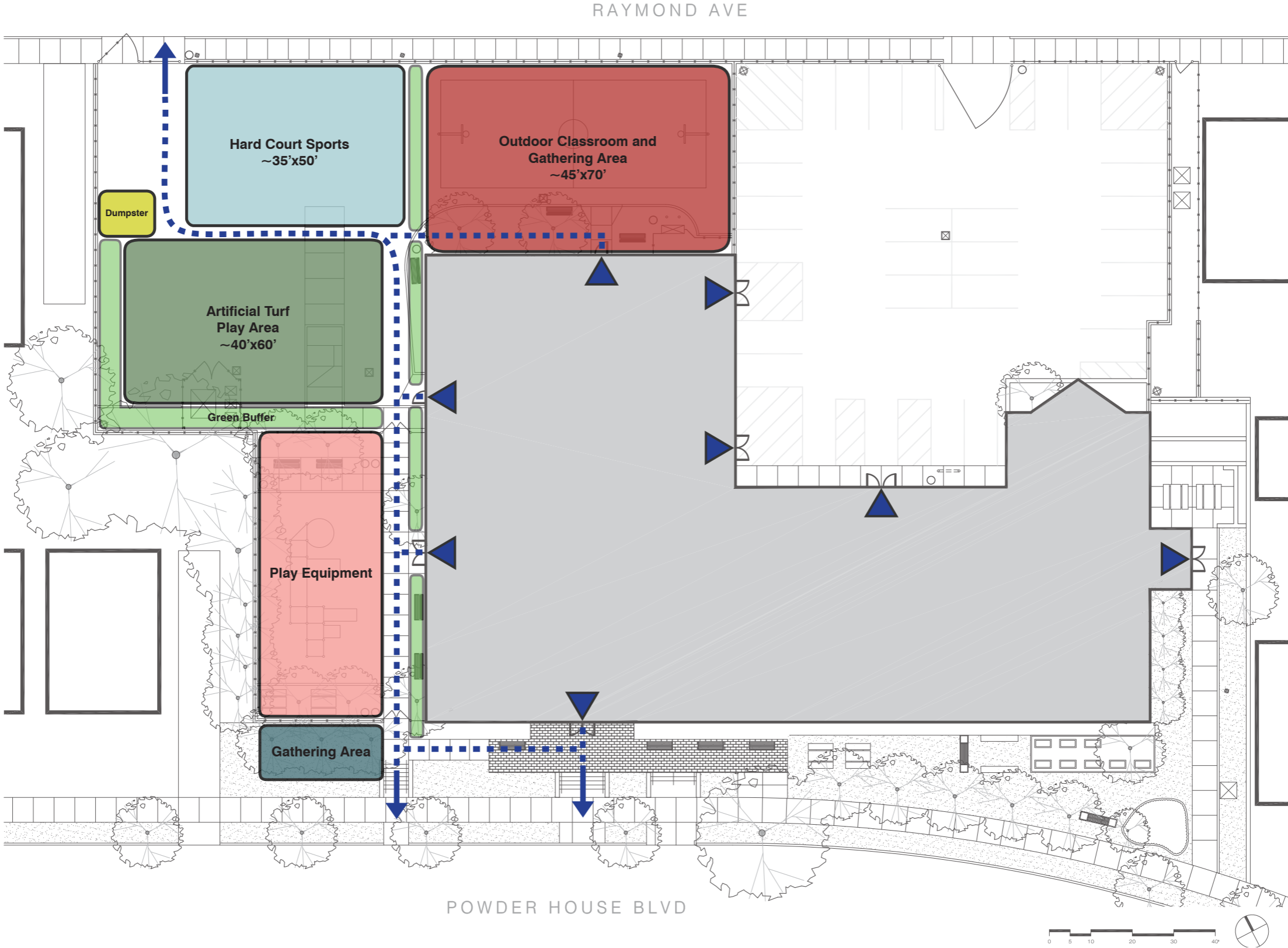
OPTION THREE

PROGRAMMATIC POSSIBILITIES



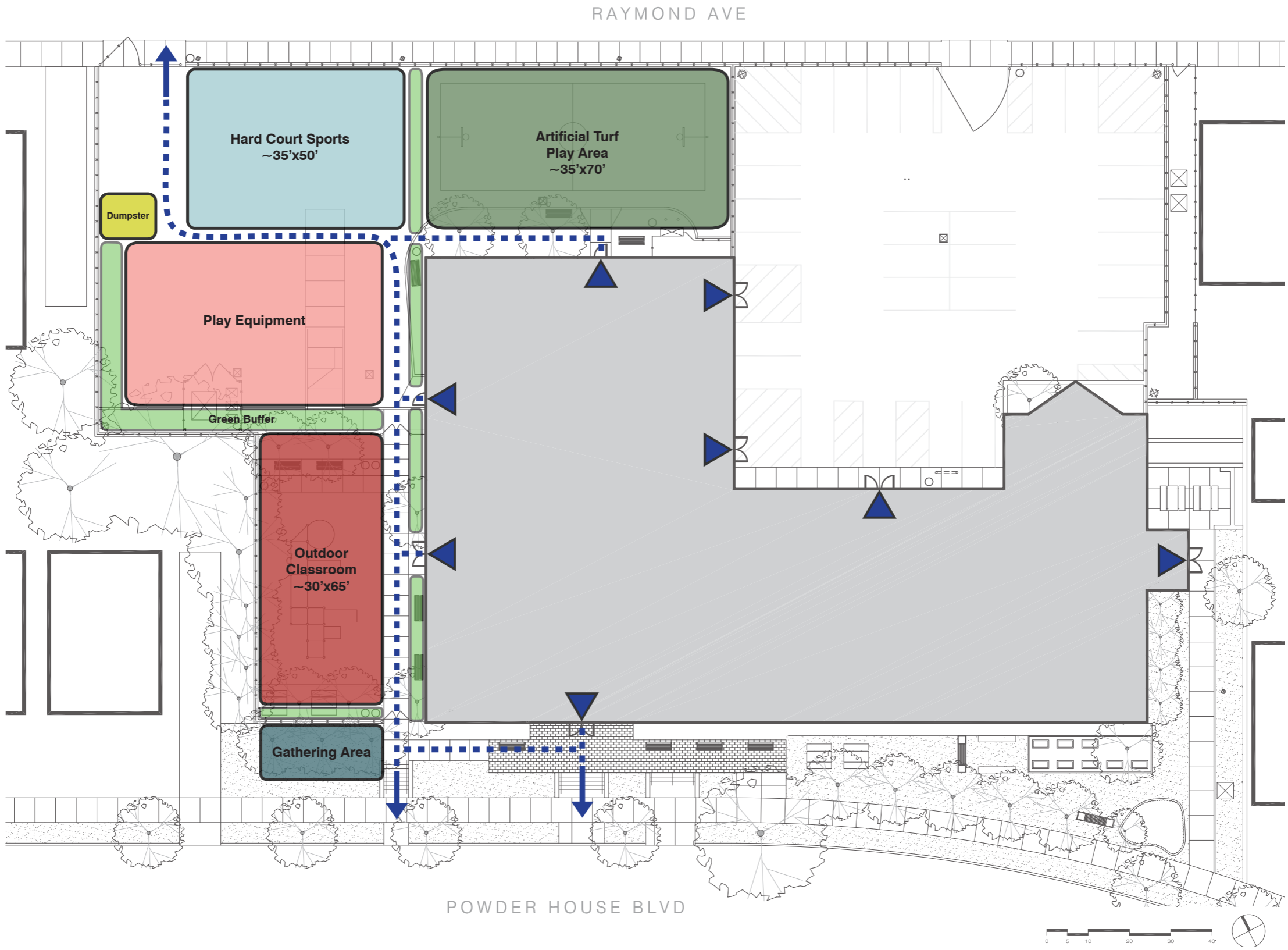
OPTION FOUR

PROGRAMMATIC POSSIBILITIES



OPTION FIVE

PROGRAMMATIC POSSIBILITIES



DISCUSSION

- What concerns do you have about the site?
- What features would you like in the schoolyard?
- Which activities should have the highest priority?

THANK YOU

Other questions, concerns, and ideas? Interested in attending future public meetings and sending more feedback? Please contact:

Arn Franzen, Senior Project Manager
Public Space & Urban Forestry, City of Somerville
Phone: (617) 625-6600 x 2545
email: AFranzen@somervillema.gov

Be sure to sign up for the project email list to receive updates and meeting notices, on the sign-in sheet at the meeting or by emailing Arn!

SURFACE MATERIAL

EXISTING CONDITIONS & SITE ANALYSIS

