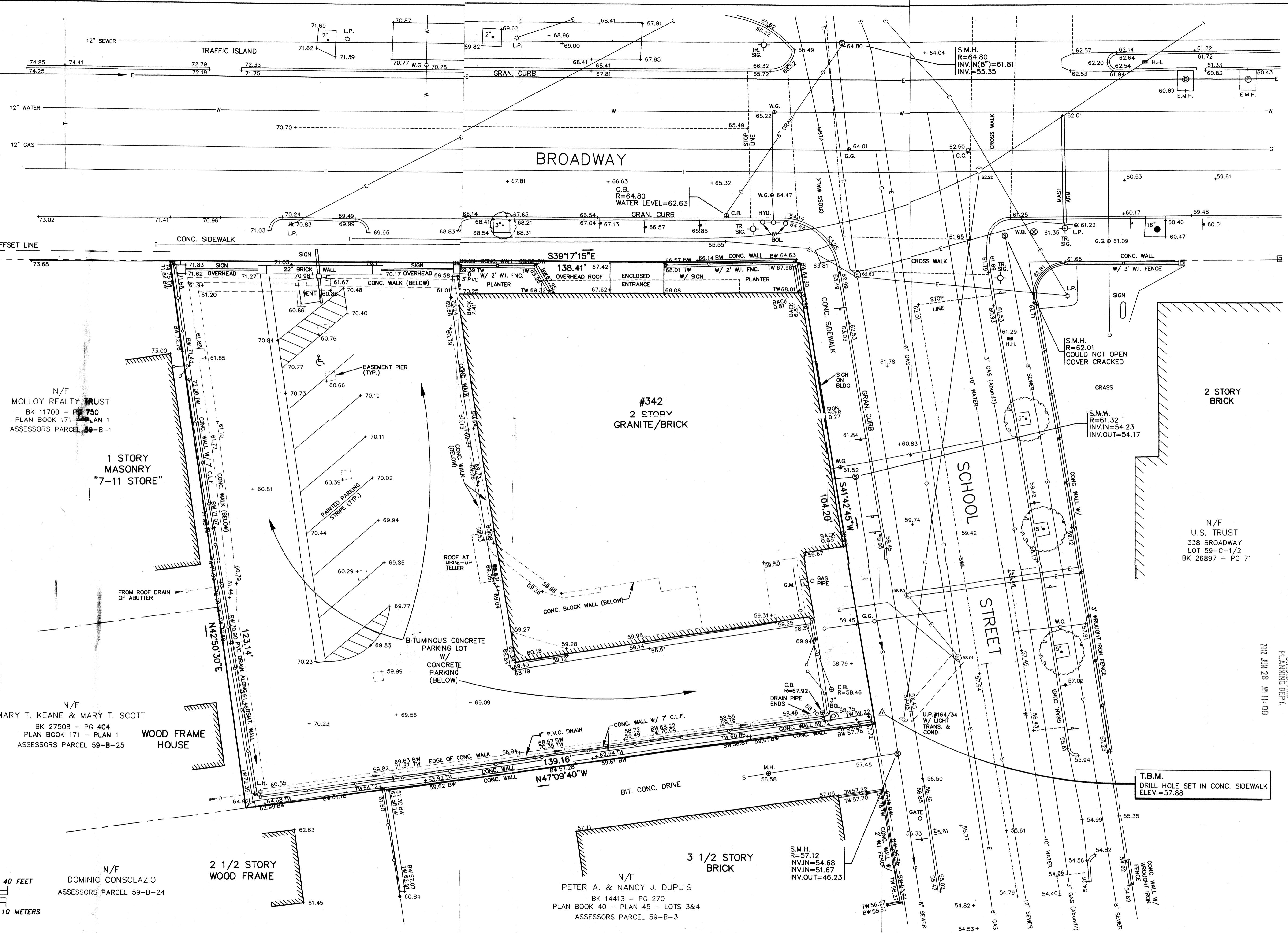
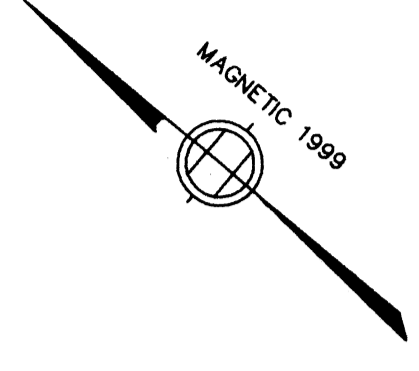


UNDERGROUND HIGH VOLTAGE TRANSMISSION LINES IN PRESSURIZED PIPE BOSTON EDISON CABLE NO.358

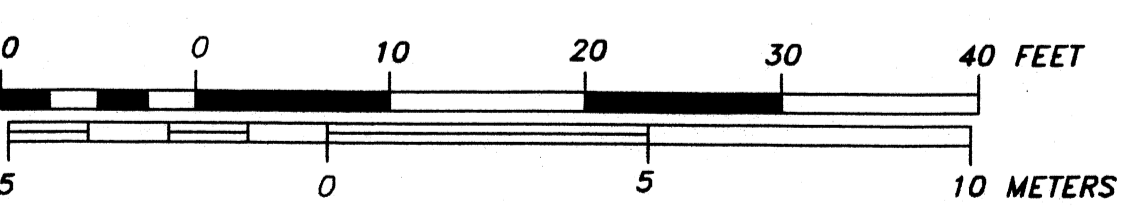


- LEGEND**
- S.B./D.H. BOUND FOUND
 - WROUGHT IRON FENCE
 - CHAIN LINK FENCE
 - S SANITARY SEWER
 - D DRAIN LINE
 - W WATER LINE
 - G GAS LINE
 - E ELECTRIC LINE
 - T TELEPHONE LINE
 - MBTA MASSACHUSETTS BAY TRANSPORTATION AUTHORITY LINE
 - ⊙ SANITARY MANHOLE
 - ⊙ ELECTRIC MANHOLE
 - ⊙ TELEPHONE MANHOLE
 - ⊙ CATCH BASIN
 - UTILITY POLE
 - LIGHT POLE
 - PEDESTRIAN SIGNAL
 - TR SIG. TRAFFIC SIGNAL
 - H.H. D.P.W. HAND HOLE
 - F.H. FIRE HYDRANT
 - W.G. WATER GATE
 - G.G. GAS GATE
 - SIGN
 - W.B. WASTE BASKET
 - BOL. BOLLARD
 - TW TOP OF WALL
 - BW BOTTOM OF WALL

NOTE
 LOCATION OF UTILITIES SHOWN HEREON ARE THE RESULT OF SURFACE EVIDENCE AS LOCATED BY FIELD SURVEY, PLANS OF RECORD, INFORMATION FURNISHED BY THE RESPECTIVE UTILITY COMPANIES, AND OTHER AVAILABLE SOURCES. THIS PLAN DOES NOT NECESSARILY DEPICT THE EXACT LOCATION OF ALL UTILITIES WHICH MAY EXIST AT THIS TIME WITHIN THE PREMISES SURVEYED.

LOCUS TITLE REFERENCE
 WINTER HILL FEDERAL SAVINGS BANK
 BOOK 12775 - PAGE 26
 PLAN BOOK 40 - PLAN 45
 ASSESSORS PARCEL 59-B-2
 LOT AREA = 15,690 S.F.

BENCHMARK
 M.A.G.S. DISK IN CONC. SIDEWALK #11002Z
 LOCATED AT TEN HILLS, AT THE NE CORNER
 OF THE INTERSECTION OF SHORE DRIVE AND
 MYSTIC AVENUE. 36.61 FT. NORTH OF GAS
 GATE; 38.62 FT. NE OF GAS DRIP; 37.70 FT.
 NE OF MANHOLE; 30.71 FT. NW OF CATCH
 BASIN ON THE NORTH SIDE OF SHORE DRIVE.
 ELEVATION=11.47 (DATUM: NGVD 1929)



N/F
 MOLLOY REALTY TRUST
 BK 11700 - PG 750
 PLAN BOOK 171 - PLAN 1
 ASSESSORS PARCEL 59-B-1

N/F
 MARY T. KEANE & MARY T. SCOTT
 BK 27508 - PG 404
 PLAN BOOK 171 - PLAN 1
 ASSESSORS PARCEL 59-B-25

N/F
 DOMINIC CONSOLAZIO
 ASSESSORS PARCEL 59-B-24

#342
 2 STORY
 GRANITE/BRICK

3 1/2 STORY
 BRICK

N/F
 PETER A. & NANCY J. DUPUIS
 BK 14413 - PG 270
 PLAN BOOK 40 - PLAN 45 - LOTS 3&4
 ASSESSORS PARCEL 59-B-3

2 STORY
 BRICK

N/F
 U.S. TRUST
 338 BROADWAY
 LOT 59-C-1/2
 BK 26897 - PG 71

T.B.M.
 DRILL HOLE SET IN CONC. SIDEWALK
 ELEV.=57.88

2012 JUN 29 AM 11:00
 RECEIVED
 S.P.C.D. AND
 PLANNING DEPT.

Copyright 2000 Design Consultants, Inc.

NO.	DATE	BY	REVISIONS

342 BROADWAY

TOPOGRAPHICAL PLAN OF LAND IN
 SOMERVILLE, MASSACHUSETTS
 SURVEYED FOR
 SYMMES, MAINI & MCKEE

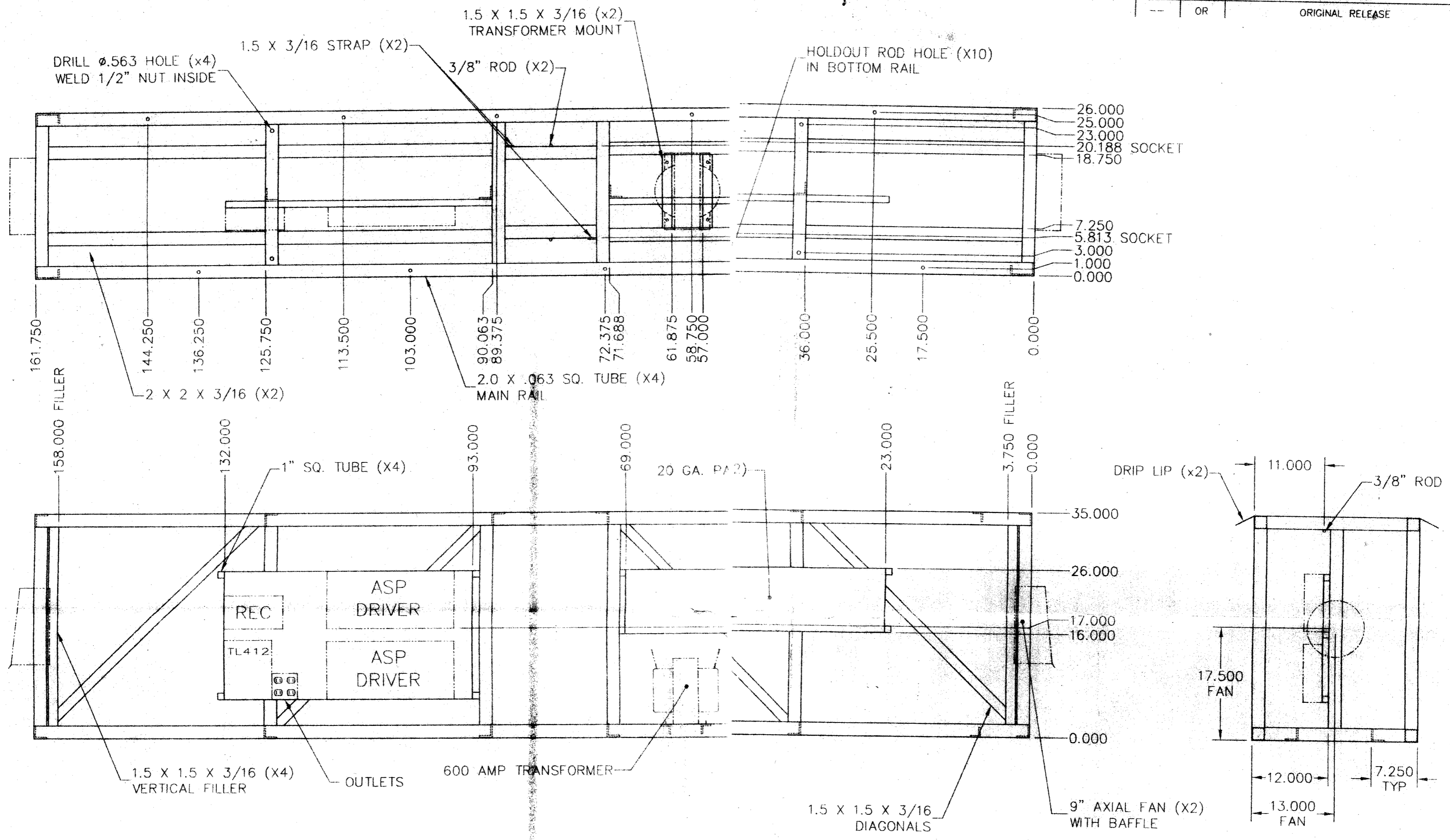
FIELD: L.J.G.
 DRAFTING: J.C.C.
 CHECKED: D.W.T.
 APPROVED: D.W.T.

Design Consultants, Inc.
 Consulting Engineers and Surveyors

DESIGN CONSULTANTS BUILDING
 265 MEDFORD STREET
 SOMERVILLE, MA 02143
 (617) 778-3350

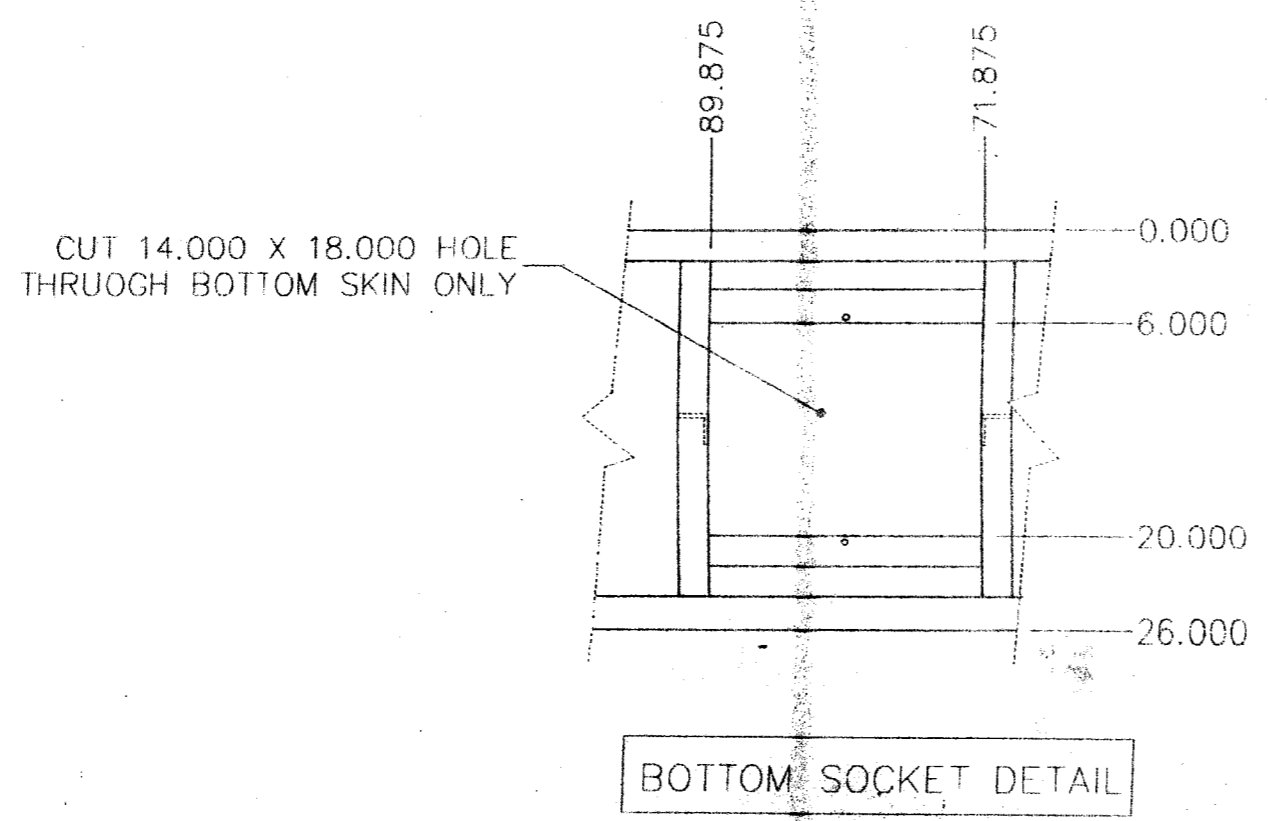
PROJECT NO. 2000-070	SCALE: HORIZ: 1"=10'
DATE: SEPT. 11, 2000	VERT: _____
SHEET NO. 1 OF 1	

REVISIONS					
ECD	REV	DESCRIPTION	DATE	BY	APPROVED
--	OR	ORIGINAL RELEASE	01/29/01	PH	



RECEIVED
S.P.C.D. AND
PLANNING DEPT.
2012 JUN 28 PM 12:02

- NOTES:
1. MATERIAL = 2 X 2 X 3/16 ANGLE EXCEPT AS NOTED
 2. DRILL 7/16 ϕ WEEP HOLES AS REQ'D.
 3. DRILL 11/16 ϕ HOLE FOR DIMMER PROBE.
 4. SKIN = .050 BLACK PRE-PAINTED ALUMINUM
 5. POWER = 120/240 SINGLE PHASE



TRANS-LUX® TRANS-LUX Corporation
1651 N. 1000 W. LOGAN, UT 84321

UNLESS OTHERWISE SPECIFIED: ALL DIMENSIONS ARE INCHES TOLERANCES: DECIMALS: FRACT: ANGLES: XX ±.05 ±1/16 ±.5' XXX ±.125 XXXX ±.0005	DESIGN	PH	DATE	TITLE
	DRAWN	PH	01/01	12" SUNSCREEN 16X88 DOUBLE FACE
	CHECKED			
	APPROVED			
	JOB #	20999	SIZE	DRAWING NO.
	SCALE	NTS	C	1627700
				SHEET 1 OF 1
				REVISION OR