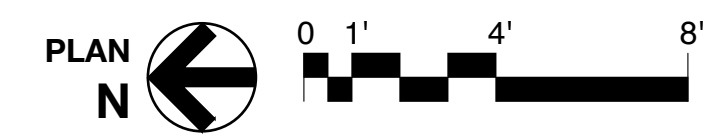


**FOR PRICING**  
**10 SEPT 2012**



**Federal Realty**  
 INVESTMENT TRUST  
 ARCHITECTS

owner:  
**FEDERAL REALTY INVESTMENT TRUST**  
 ASSEMBLY ROW  
 5 MIDDLESEX AVENUE, 4TH FLOOR  
 SOMERVILLE MA 02145  
 PHONE: (617) 684-1508

Project Architect:  
**D'AGOSTINO IZZO QUIRK ARCHITECTS, Inc.**  
 1310 BROADWAY  
 SOMERVILLE, MA 02144  
 PHONE: (617) 623-3000

Structural Engineer:  
**McNAMARA SALVIA, Inc.**  
 160 FEDERAL STREET  
 BOSTON MA 02110  
 PHONE: (617) 737-0040

Mechanical Engineer:  
**WSP FLACK & KURTZ**  
 88 BLACK FALCON AVENUE, SUITE 210  
 BOSTON MA 02110  
 PHONE: (617) 210-1734

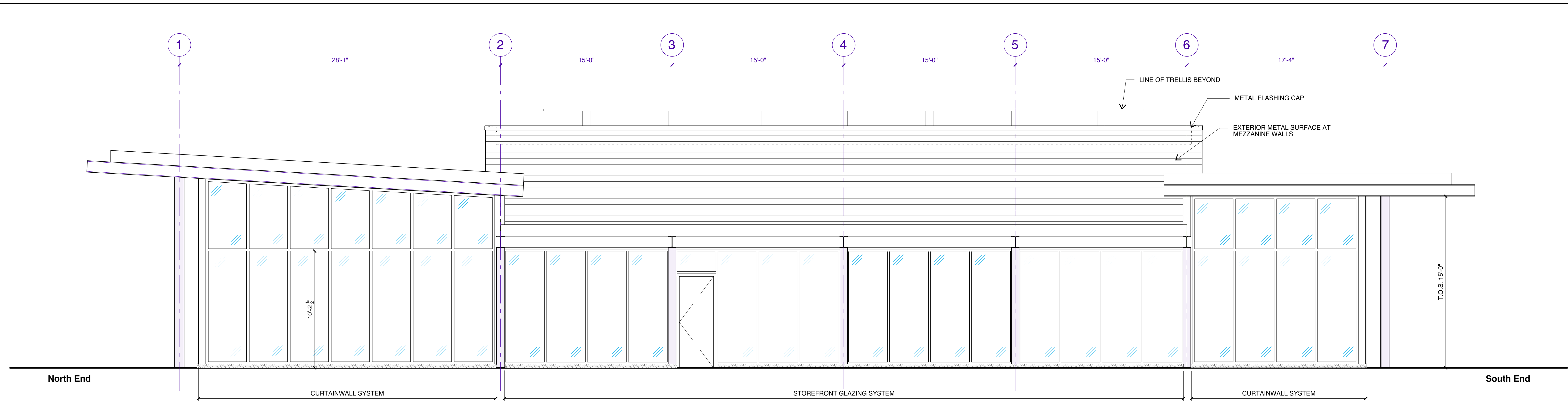
Specifications  
**WIL-SPEC**  
 15 POST OFFICE SQUARE  
 LYNNFIELD MA 01940  
 PHONE: (781) 598-6789

STAMP

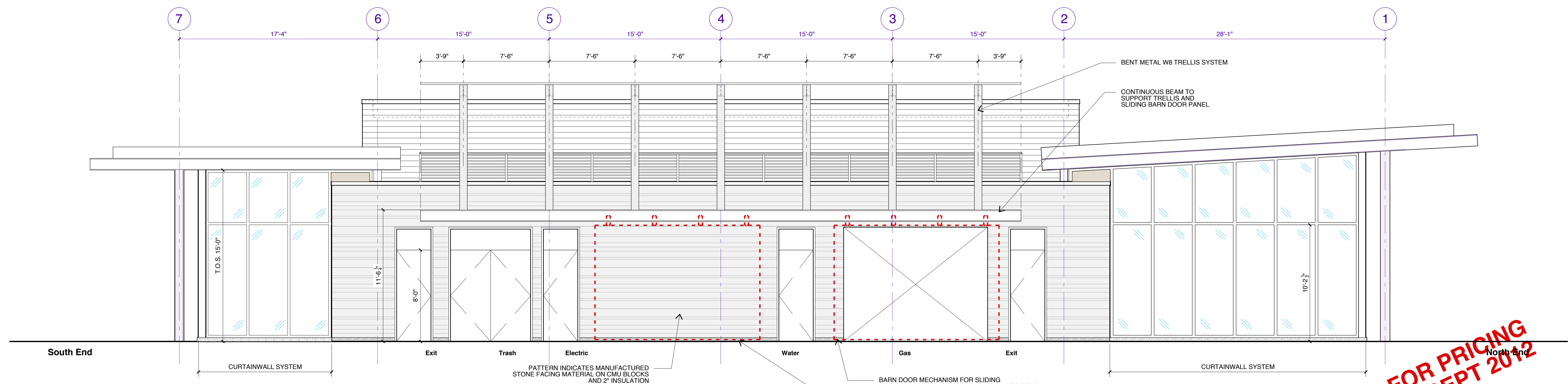
REVISIONS	
DATE	ISSUED FOR
10 SEPT 12	PRICING

**MAIN STREET PAVILION AT ASSEMBLY ROW**  
 DRAWING TITLE  
**GROUND LEVEL PLAN**  
 SCALE: 1/4" = 1'-0"  
 DRAWN BY: CMD  
 DATE: DD MON 2012  
 JOB NUMBER: 1115.01

DRAWING NUMBER  
**A1.1**

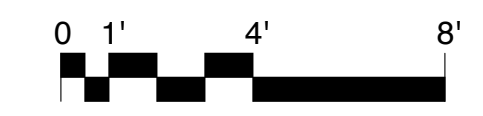


**1 WEST ELEVATION**  
SCALE: 1/4" = 1'-0"



**2 EAST ELEVATION**  
SCALE: 1/4" = 1'-0"

**FOR PRICING**  
**10 SEPT 2012**



owner:  
**FEDERAL REALTY INVESTMENT TRUST**  
ASSEMBLY ROW  
5 MIDDLESEX AVENUE, 4TH FLOOR  
SOMERVILLE MA 02145  
PHONE: (617) 684-1508

Project Architect:  
**D'AGOSTINO IZZO QUIRK ARCHITECTS, Inc.**  
1310 BROADWAY  
SOMERVILLE, MA 02144  
PHONE: (617) 623-3000

Structural Engineer:  
**McNAMARA SALVIA, Inc.**  
160 FEDERAL STREET  
BOSTON MA 02110  
PHONE: (617) 737-0040

Mechanical Engineer:  
**WSP FLACK & KURTZ**  
88 BLACK FALCON AVENUE, SUITE 210  
BOSTON MA 02110  
PHONE: (617) 210-1734

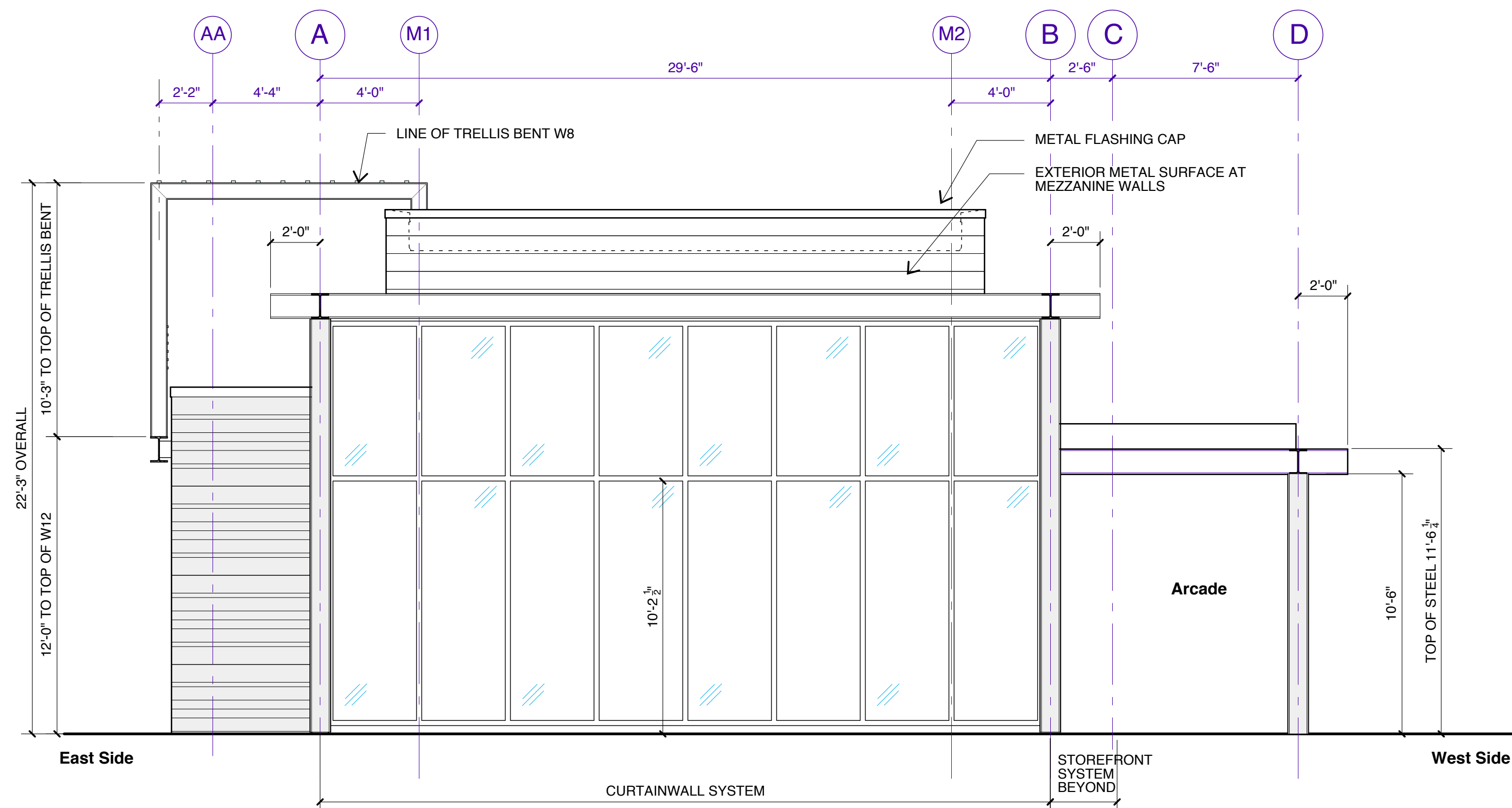
Specifications  
**WIL-SPEC**  
15 POST OFFICE SQUARE  
LYNNFIELD MA 01940  
PHONE: (781) 598-6789

STAMP

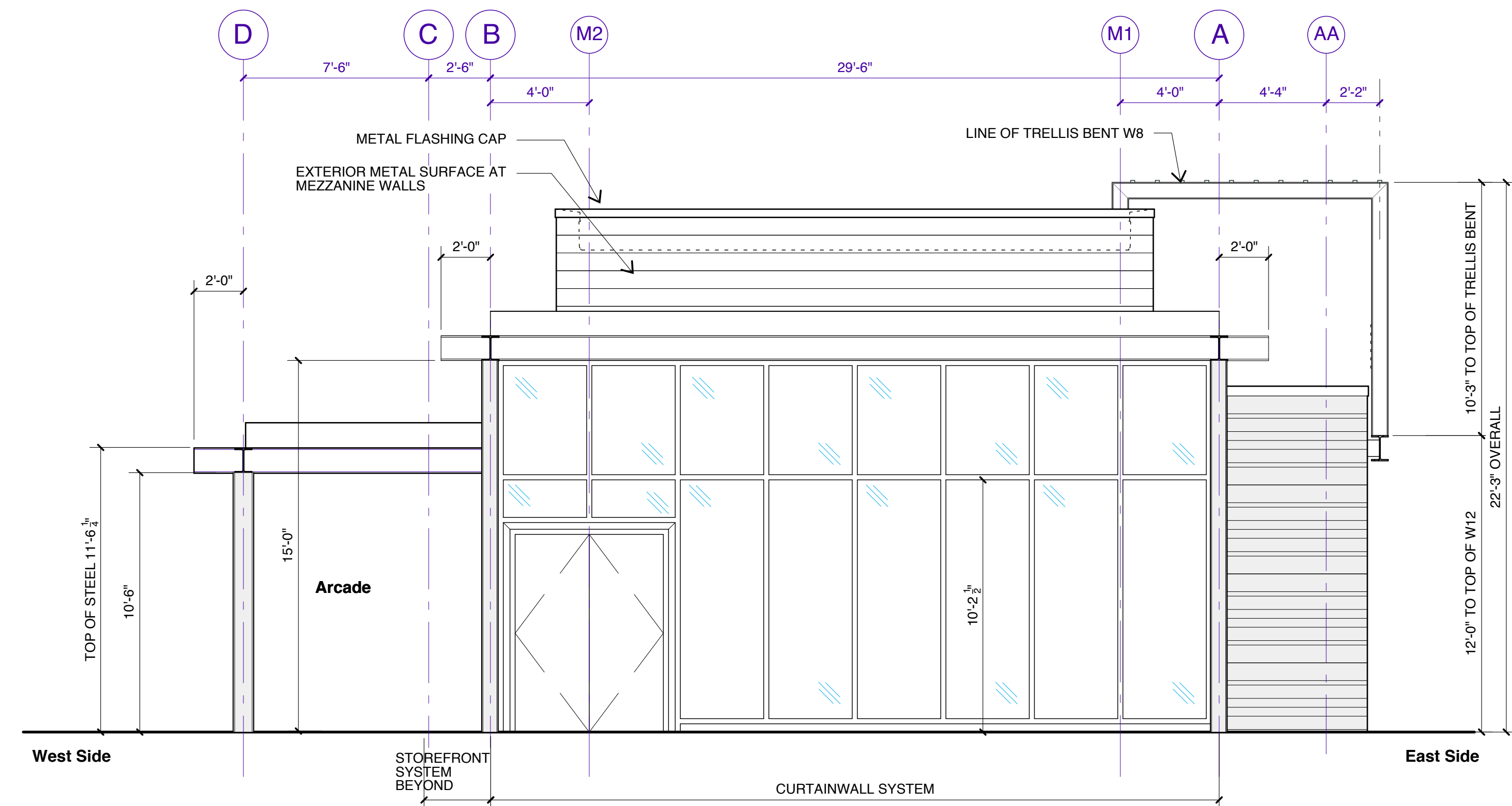
REVISIONS	
DATE	ISSUED FOR
10 SEPT 12	PRICING

**MAIN STREET PAVILION AT ASSEMBLY ROW**  
DRAWING TITLE  
**WEST AND EAST ELEVATIONS**  
SCALE: 1/4" = 1'-0"  
DRAWN BY: CMD  
DATE: DD MON 2012  
JOB NUMBER: 1115.01

DRAWING NUMBER  
**A3.1**

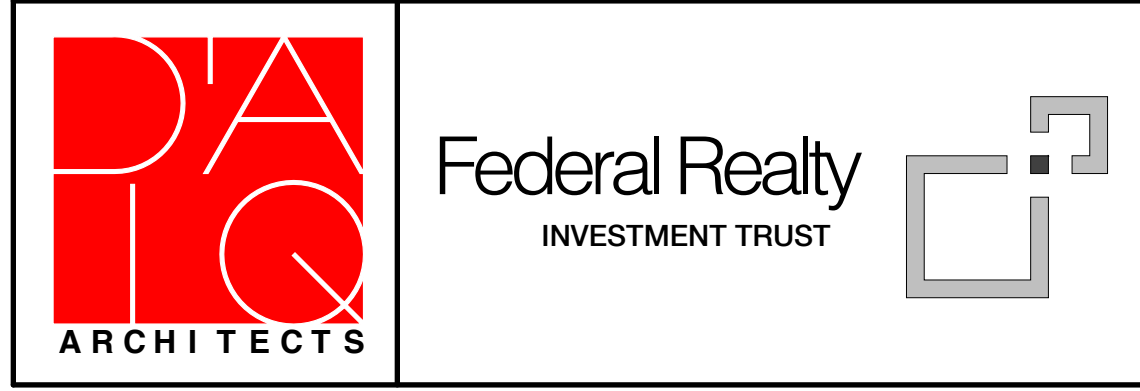
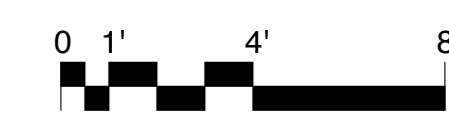


**1 NORTH ELEVATION**  
SCALE: 1/4" = 1'-0"



**2 SOUTH ELEVATION**  
SCALE: 1/4" = 1'-0"

**FOR PRICING  
10 SEPT 2012**



owner:  
**FEDERAL REALTY INVESTMENT TRUST**  
ASSEMBLY ROW  
5 MIDDLESEX AVENUE, 4TH FLOOR  
SOMERVILLE MA 02145  
PHONE: (617) 684-1508

Project Architect:  
**D'AGOSTINO IZZO QUIRK ARCHITECTS, Inc.**  
1310 BROADWAY  
SOMERVILLE, MA 02144  
PHONE: (617) 623-3000

Structural Engineer:  
**McNAMARA SALVIA, Inc.**  
160 FEDERAL STREET  
BOSTON MA 02110  
PHONE: (617) 737-0040

Mechanical Engineer:  
**WSP FLACK & KURTZ**  
88 BLACK FALCON AVENUE, SUITE 210  
BOSTON MA 02110  
PHONE: (617) 210-1734

Specifications  
**WIL-SPEC**  
15 POST OFFICE SQUARE  
LYNNFIELD MA 01940  
PHONE: (781) 598-6789

STAMP

REVISIONS	
DATE	ISSUED FOR
10 SEPT 12	PRICING

<b>MAIN STREET PAVILION AT ASSEMBLY ROW</b>			
DRAWING TITLE			
<b>NORTH AND SOUTH ELEVATIONS</b>			
SCALE	DRAWN BY	DATE	JOB NUMBER
1/4" = 1'-0"	CMD	DD MON 2012	1115.01

DRAWING NUMBER  
**A3.2**