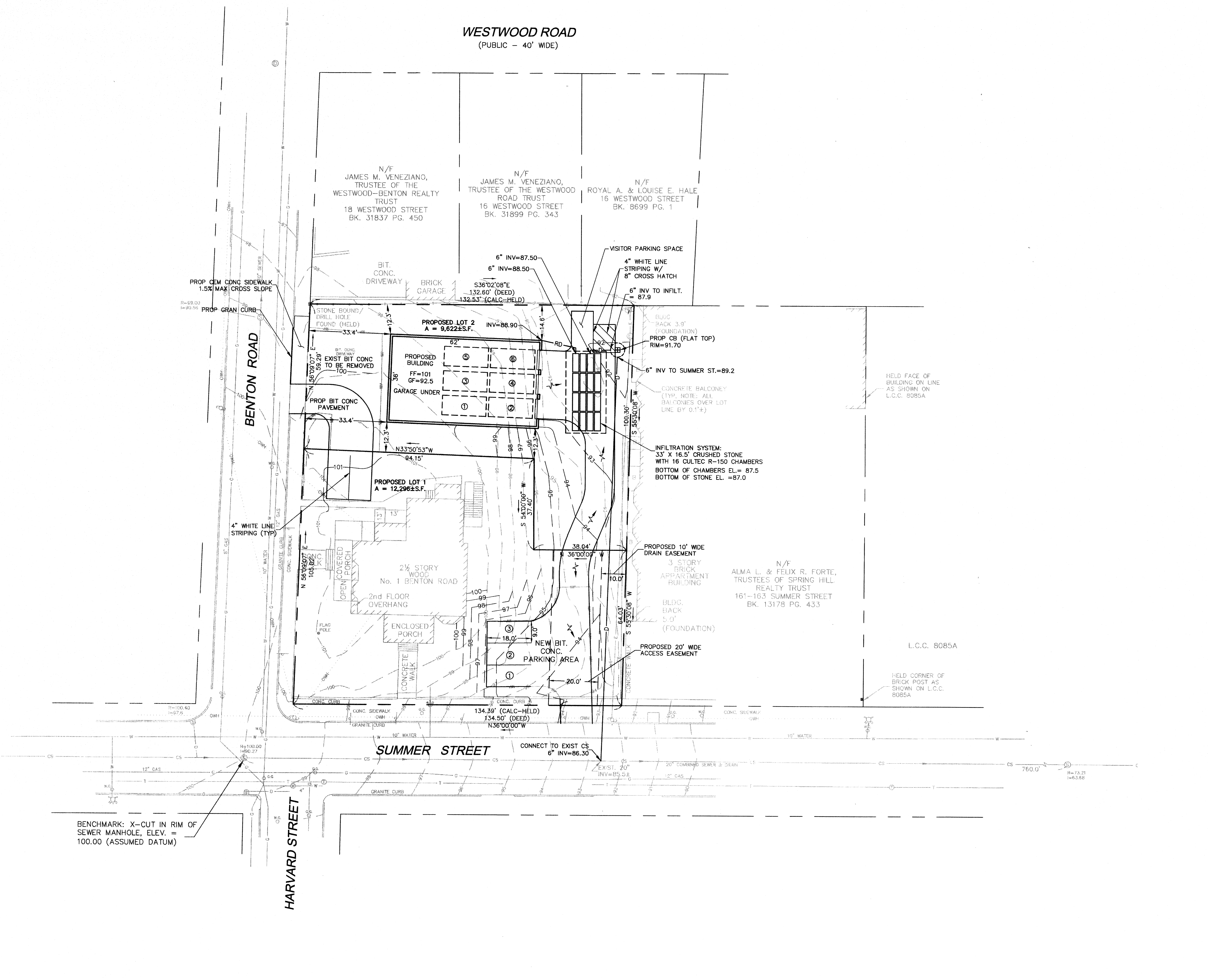
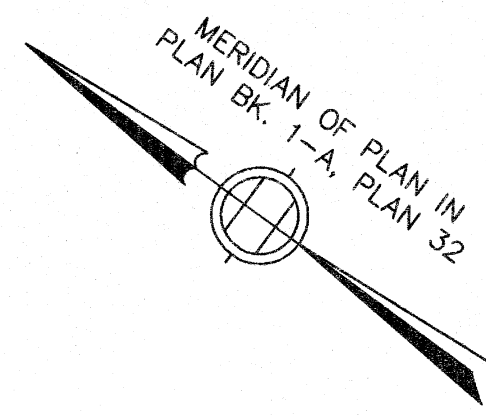


P:\2009 Projects\2009-021 Benton Rd Somerville\dwg_ENGINEERING\09-021 Construction Plan.dwg 12/10/2012 12:36:03 PM EST

WESTWOOD ROAD
(PUBLIC - 40' WIDE)



LEGEND

- CHAIN LINK FENCE
- S— SANITARY SEWER
- D— DRAIN LINE
- W— WATER LINE
- E— ELECTRIC LINE
- G— GAS LINE
- ⊙ SANITARY SEWER MANHOLE
- ⊕ UNKNOWN MANHOLE
- ⊙ MONITORING WELL
- ⊕ HAND HOLE
- ☆ LIGHT POLE
- ⊕ FIRE HYDRANT
- W.G. WATER GATE
- G.G. GAS GATE
- ×33.72 SPOT ELEVATION
- √— SURFACE DRAINAGE FLOW

ZONING INFORMATION

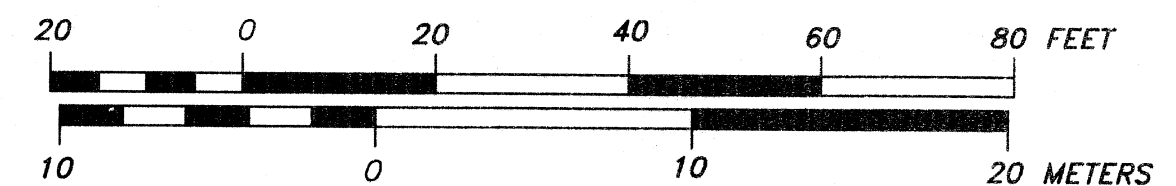
- DISTRICT: RC (RESIDENTIAL C) AS SHOWN ON ASSESSOR'S PROPERTY LISTING CARD
- MINIMUM LOT SIZE = 7,500 S.F.
 - MAXIMUM STORIES = 3 (40 FEET)
 - MINIMUM FRONT YARD = 15'
 - MINIMUM SIDE YARD = 10' (FOR LOT 2, ASSUMED 3 STORY BUILDING)
 - MINIMUM REAR YARD = 8' (FOR LOT 1)
 - MINIMUM REAR YARD = 20'
 - MINIMUM FRONTAGE = 50'

PLAN REFERENCES:

PLAN No. 841 OF 1937
BK. 2318 PG. END
L.C.C. 8085A
PLAN BK. 1-A PLAN 32

LOCUS TITLE INFORMATION

1 BENTON ROAD
OWNER: BRIAN & MAUREEN K. STOUT
DEED REFERENCE: BK. 42059 PG. 206
ASSESSORS: MAP 43, BLOCK G, LOT 14

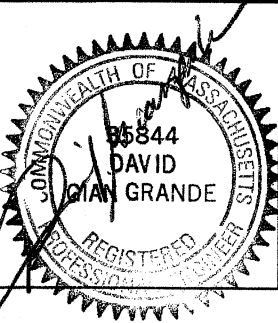


Copyright 2012 Design Consultants, Inc.

Design Consultants, Inc.
Consulting Engineers and Surveyors
120 MIDDLESEX AVE, SUITE 20
SOMERVILLE, MA 02145
(617) 776-3350
68 PLEASANT STREET
NEWBURYPORT, MA 01950
(978) 358-7173

SCALE:			
HORIZ: 1" = 20'			
VERT:			
	1	12/10/12	DC
	NO.	DATE	BY

DESIGNED: MG/DG
DRAFTED: TP/SW
CHECKED: DG
APPROVED: DG



CONSTRUCTION SITE PLAN
3 BENTON ROAD,
169 SUMMER STREET

PLAN OF LAND IN
SOMERVILLE, MASSACHUSETTS
PREPARED FOR
JOSE MARTINS

PROJECT NO.
2009-021
DATE: NOV. 26, 2012
SHEET NO.
1 OF 2

