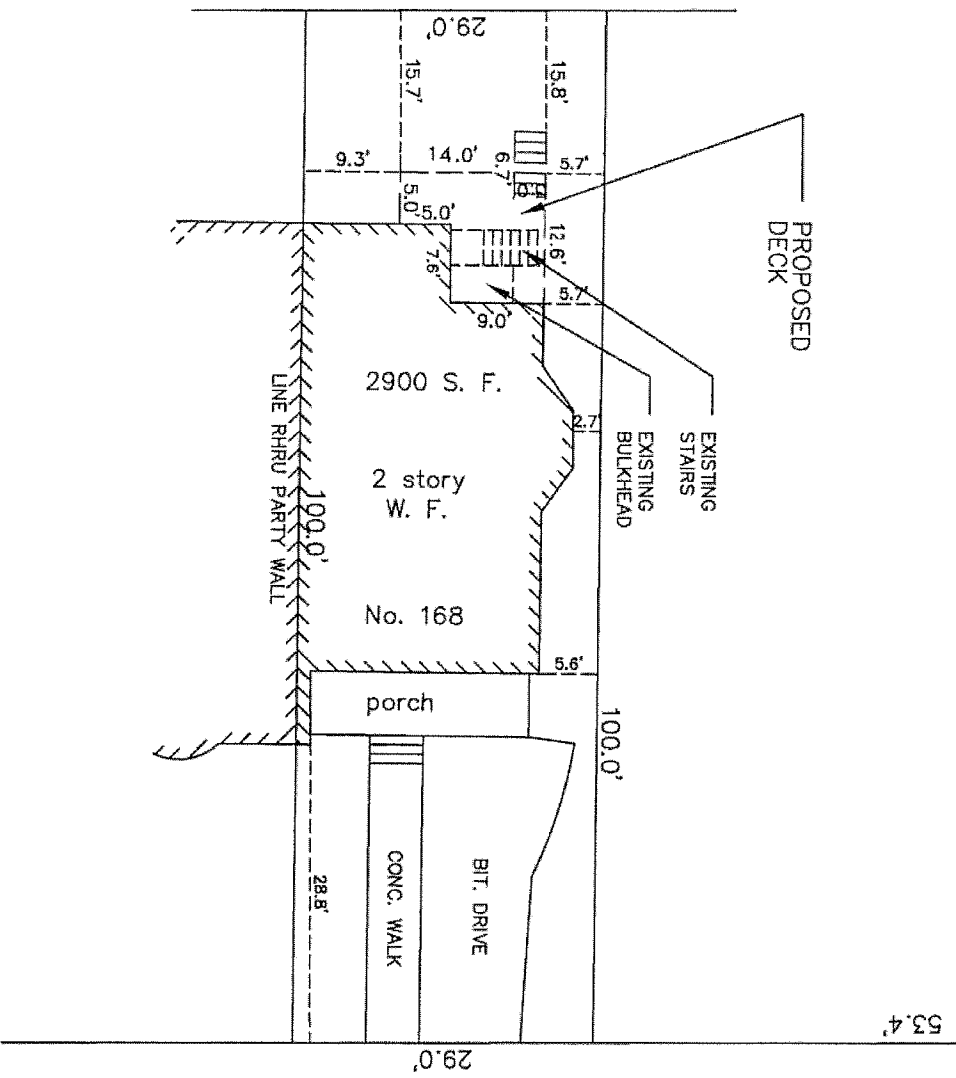


HARVARD STREET



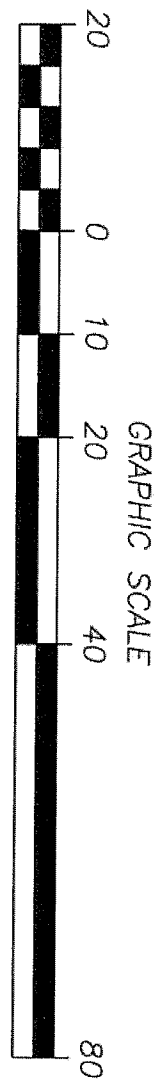
SUMMER STREET

RECEIVED
 S.P.C.D. AND
 PLANNING DEPT.
 2011 JUN -2 PM 2: 17

PLOT PLAN
 168 SUMMER STREET
 SOMERVILLE, MASS.

SCALE : 1" = 20'
 MAY 2, 2011

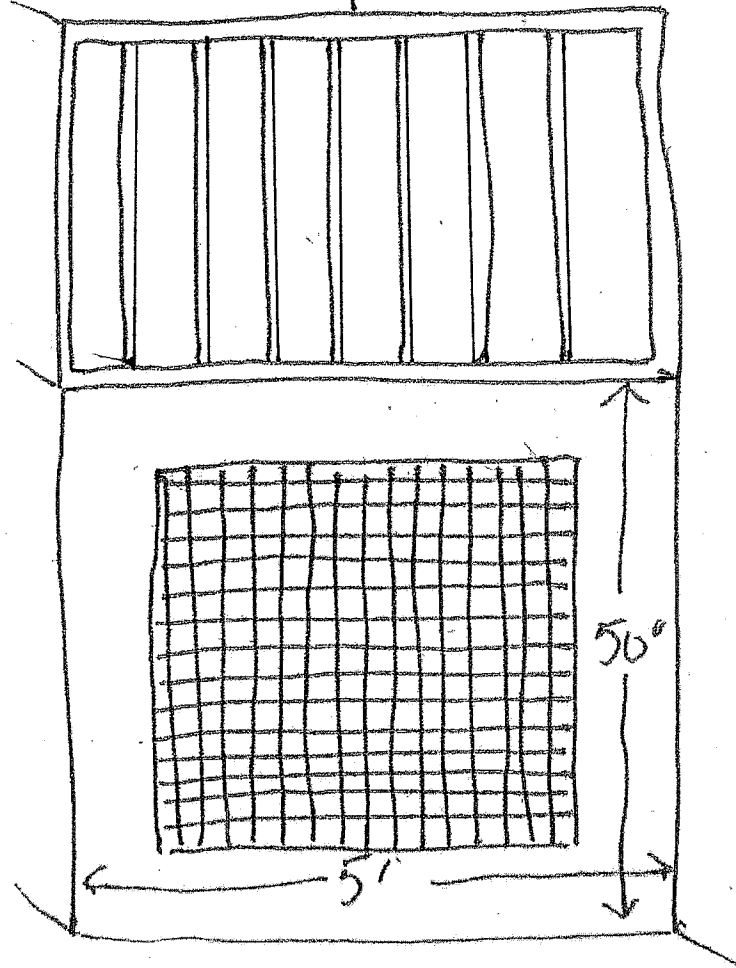
AGH ENGINEERING
 166 WATER STREET
 STOUGHTON, MA 02072
 PHONE: (781)344-2386



168 Summer St
Back Deck
June 2011

RECEIVED
S.P.C.D. AND
PLANNING DEPT.

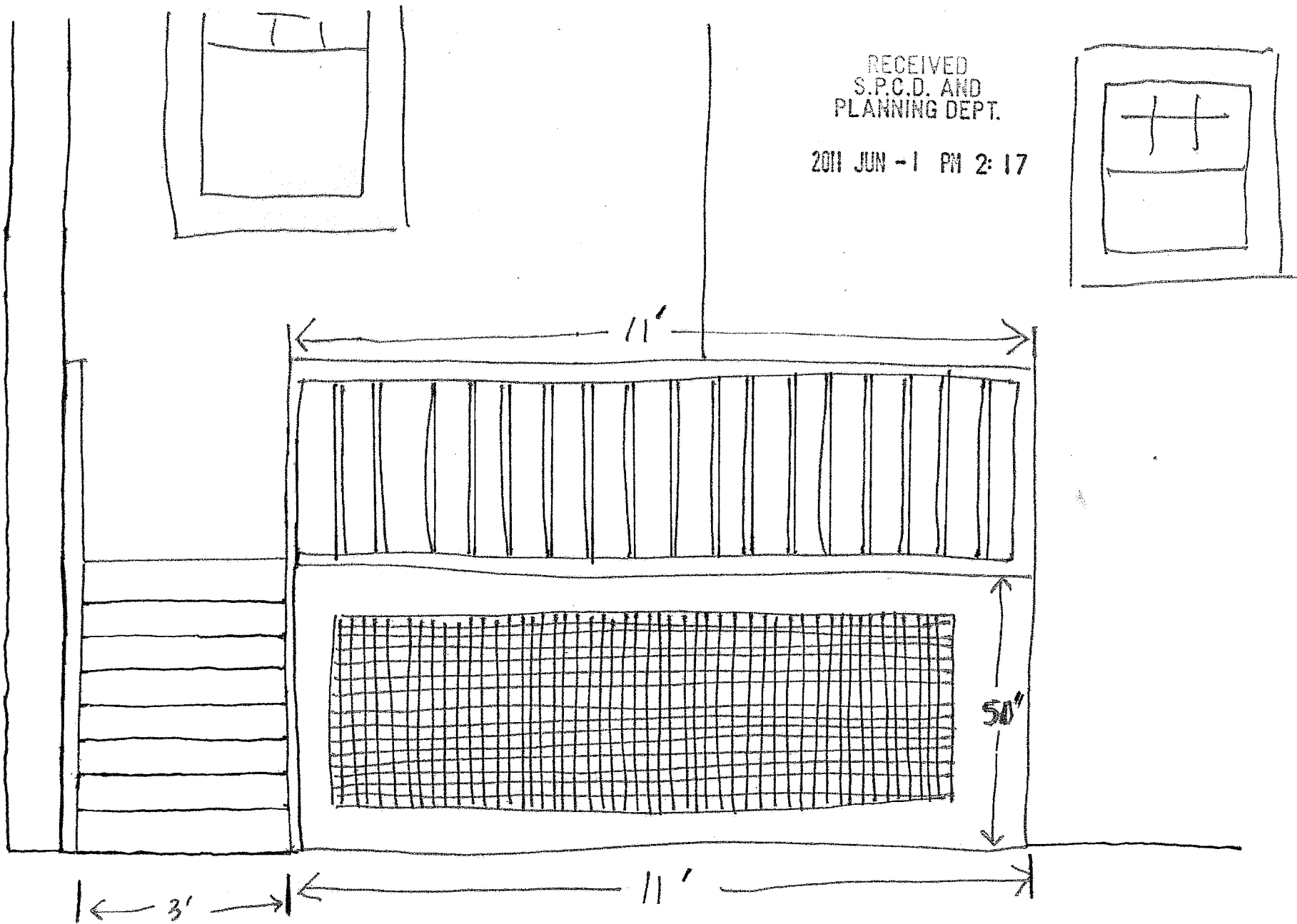
2011 JUN -1 PM 2:17



East view

RECEIVED
S.P.C.D. AND
PLANNING DEPT.

2011 JUN -1 PM 2:17



168 Summer St
Back Deck
June 2011

South view

RECEIVED
S.P.C.D. AND
PLANNING DEPT.

2011 JUN -1 PM 2:17

168 Summer St
Back Deck
June 2011

