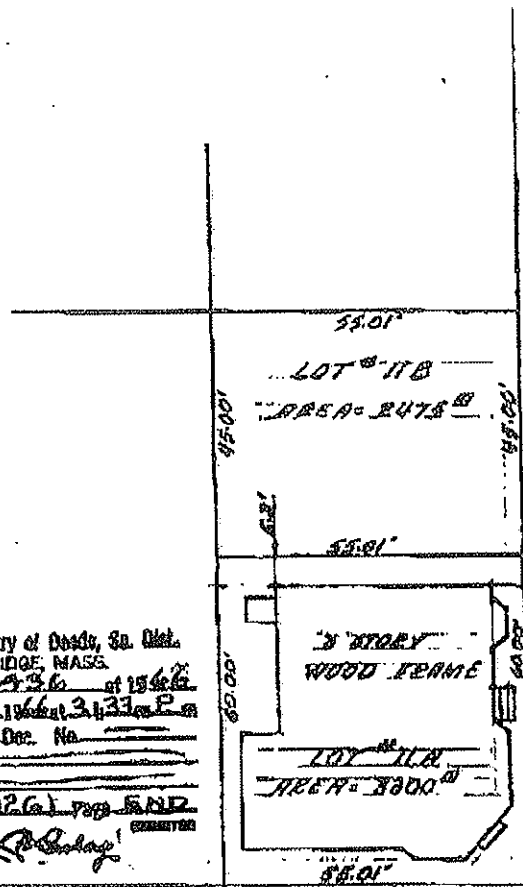
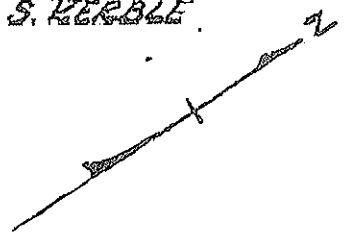


PLAN OF LAND
IN
SOMERVILLE, MASS.
BELONGING TO
BENJAMIN KERBLE & BERTRICE S. KERBLE



RECORDED
BY P.

Address: Registry of Deeds, So. Dist.
CAMBRIDGE, MASS.
Plan Number: 1436 of 1988
Rec'd DEC 1, 1988 at 3:33 P.M.
With ALONE Dec. No.

Recorded: Book 11261 Page 512
Noted: *[Signature]*

SUMNER ST.
PUBLIC 40' WIDE

2011 MAY 17 AM 10: 59

RECEIVED
S.P.O.D. AND
PLANNING DEPT.

SCHOOL ST.
PUBLIC 40' WIDE

APPROVAL UNDER THE
SUBDIVISION CONTROL LAW
NOT REQUIRED

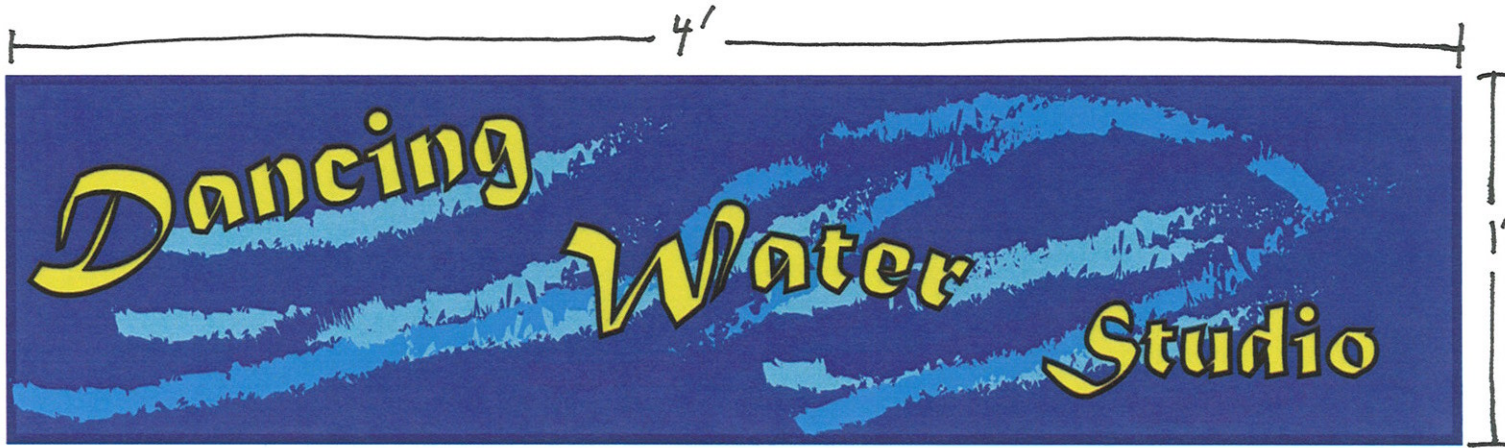
[Signature]
SOMERVILLE PLANNING BOARD



by SOMERVILLE ENGINEERING SERVICES INC.

JUNE 17 1988

SCALE: 1"=20'



Signage for 68 Summer Street

RECEIVED
S.P.C.D. AND
PLANNING DEPT.
2011 MAY 17 AM 10: 59