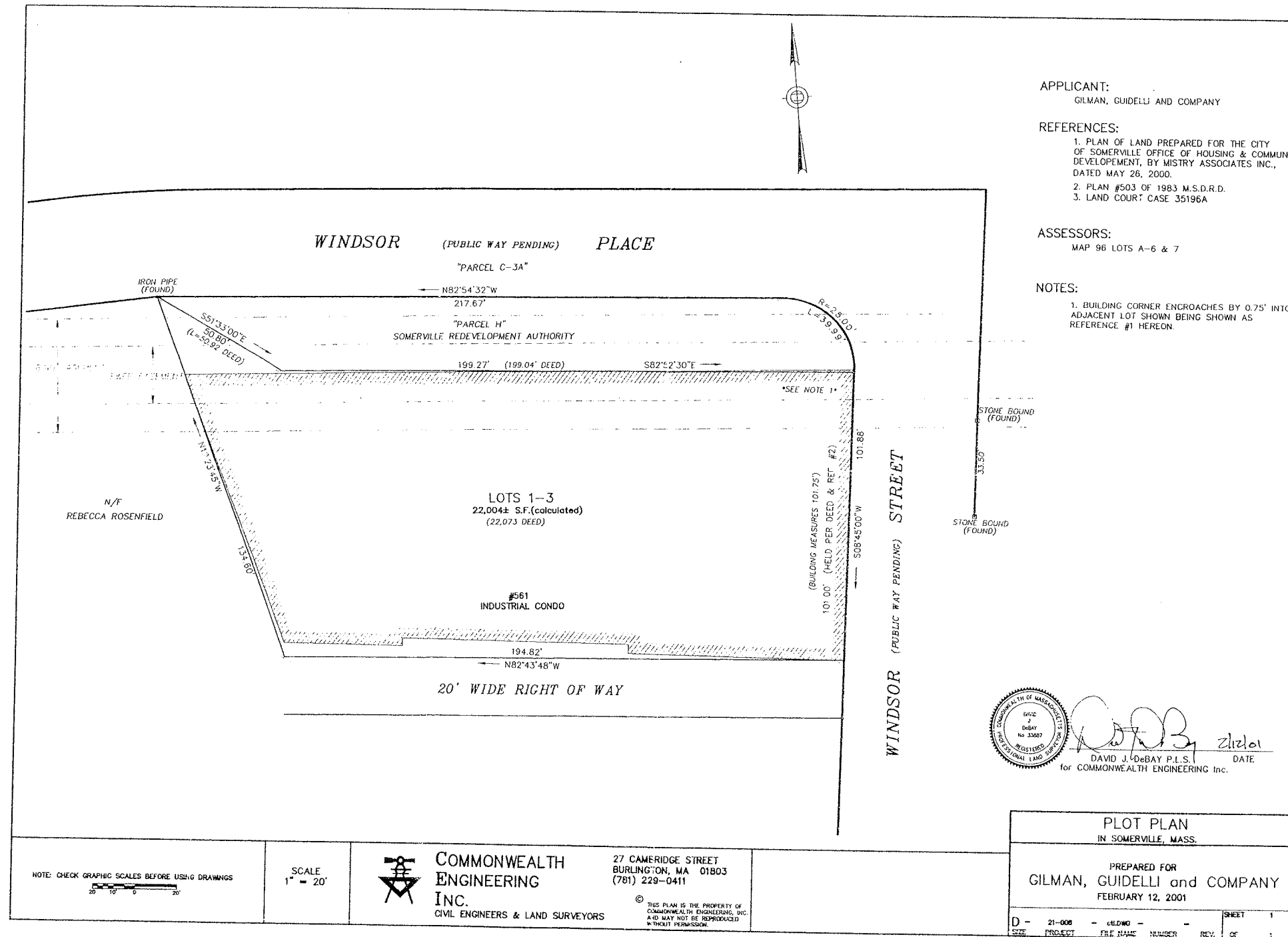


**Windsor Place**  
 561 Windsor Street  
 Somerville, Ma 02143

Owner:  
 561 WINDSOR STREET L.L.C.  
 561 Windsor Street  
 Somerville, Ma 02143



**SOUSA design**  
 Architects

255 Forebury Street  
 Boston, Ma 02115  
 617-238-4142  
 617-238-4143 fax

**Job #**  
**Drawn by** Ckd **by**  
**Date:** MARCH 12, 2001

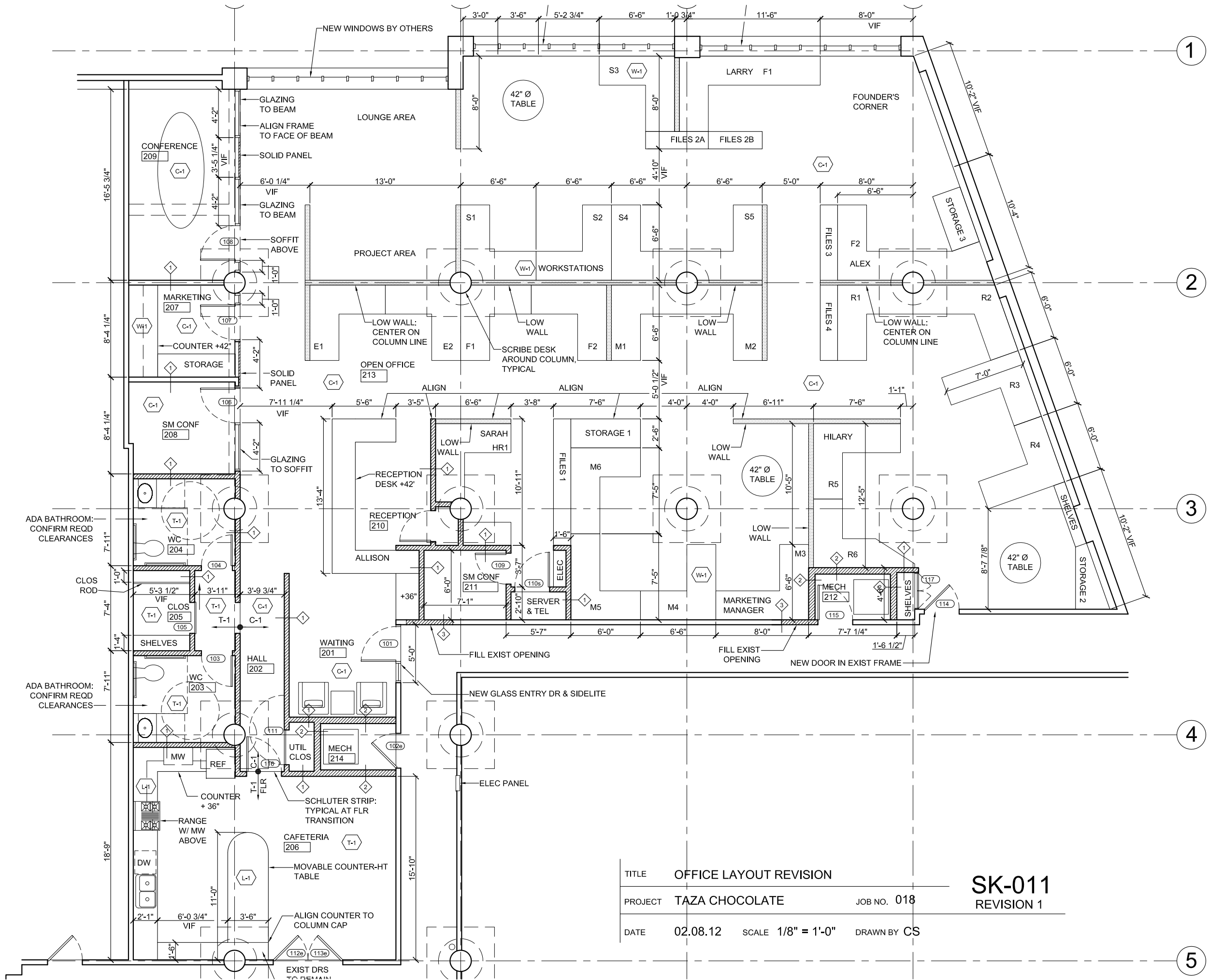
**Revisions**

NO.	DATE	DESCRIPTION

EXISTING SURVEY

**ES-1**

Scale: 1/20" = 1'-0"



TITLE	OFFICE LAYOUT REVISION	
PROJECT	TAZA CHOCOLATE	JOB NO. 018
DATE	02.08.12	SCALE 1/8" = 1'-0" DRAWN BY CS

**SK-011**  
REVISION 1

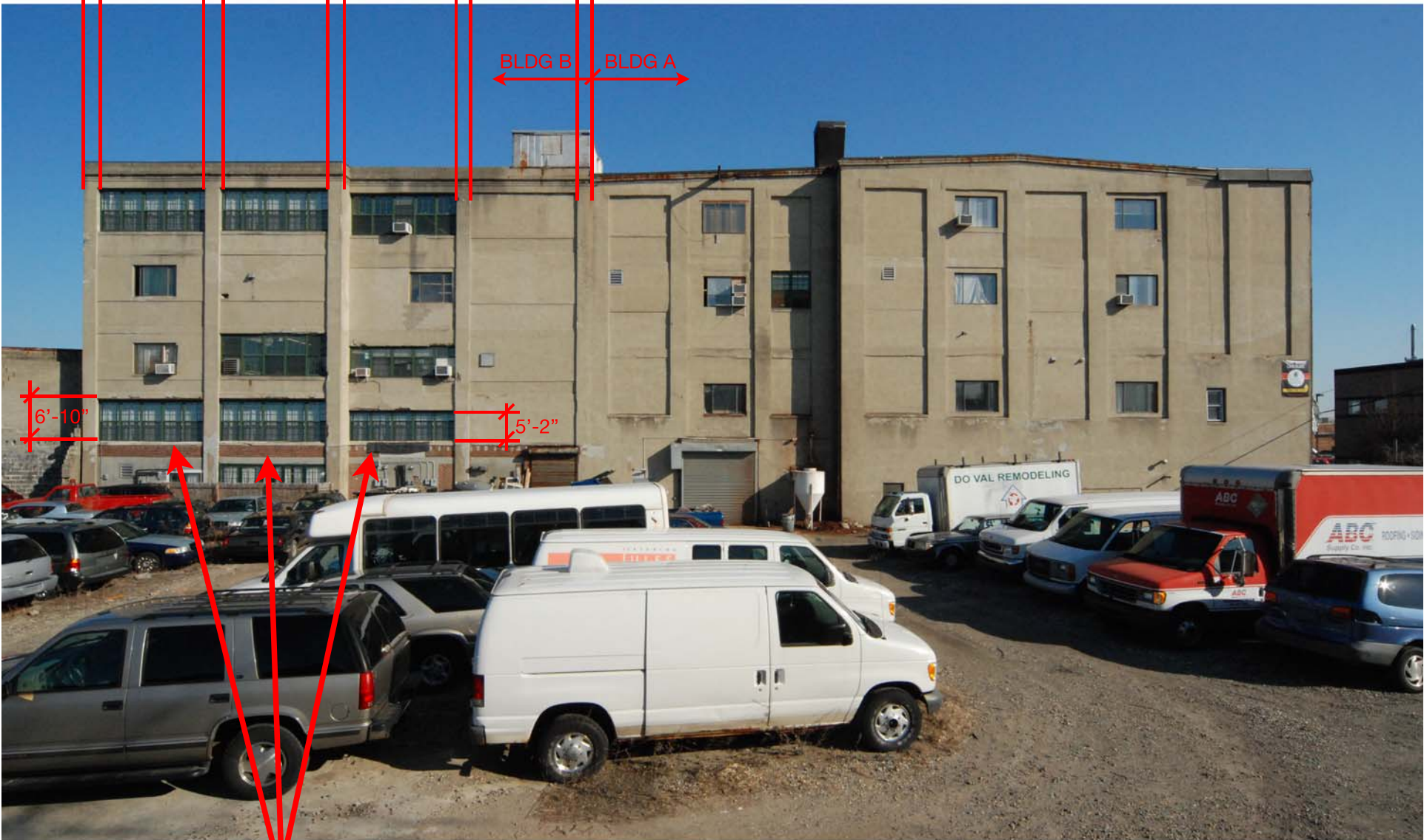
REVERSE ARCHITECTURE  
561 WINDSOR ST. #A304  
SOMERVILLE, MA 02143  
ph / f: 617.440.3622  
e: info@reversearchitecture.com







FLOOR-TO-CLG HT: 9'-6"  
TOTAL WALL LENGTH (BUILDING B): 79'-9"  
TOTAL AREA (FLR-TO-CLG): 757.6 SQFT  
TOTAL WINDOW AREA: 326.4 SQFT = 43.1% OPEN



2'-0" 17'-4" 2'-0" 17'-4" 2'-2" 17'-4" 2'-0" 17'-7" 2'-0"

BLDG B BLDG A

6'-10"

5'-2"

NEW WINDOWS