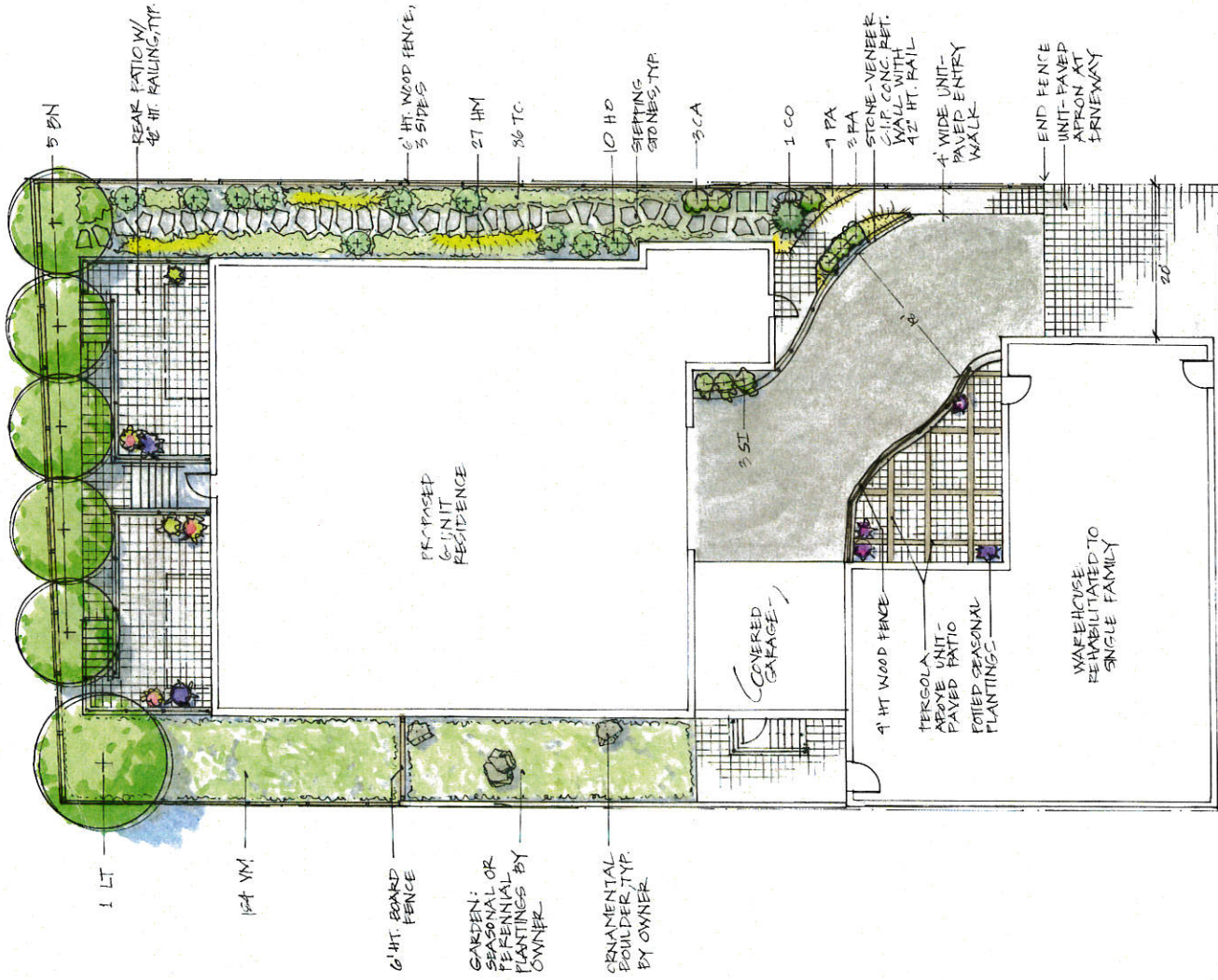
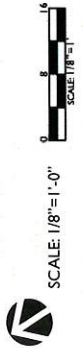


Realtor Provided



PLANT LIST	KEY	QTY	LATIN NAME	COMMON NAME	SIZE	NOTES
TREES						
CO	1		Chamaecyparis obtusa 'Grellii'	Slender Hinoki Cypress	4.5' ht.	B&B
LI	1		Liriodendron tulipifera	Tulipree	3-1.5" cal.	B&B
BN	5		Betula nigra 'Heritage'	Heritage River Birch	2-2.5" cal.	B&B single stem
SHRUBS/VINES						
CA	3		Clethra alnifolia 'Hummingbird'	Summersweet	36" ht.	Pot
RA	3		Rhus aromatica 'Lo Gro'	Lo Gro Sumac	18" ht.	Pot
SI	3		Stephanandra incisa 'Crispa'	Critical Stephanandra	5 gal.	Pot
PERENNIALS/GRASSES						
HM	27		Hibiscus merrillii	Golden Forest Grass	#2 pot	
PA	9		Pennisetum alopecuroides 'Hamelin Dwarf'	Dwarf Fountaingrass	2 gal. pot	
TC	86		Taraxacum officinale	Yarrow	1 gal. pot	
VM	154		Vincetoxicum	Vincetoxicum	4" pots	

- PLANTING NOTES**
- All plant material shall be approved by the Landscape Architect prior to arrival on the site.
 - All plant material shall conform to the guidelines established by "The American Standard for Nursery Stock", published by the American Association of Nurserymen, Inc.
 - No substitution of plant species will be allowed without the written approval of the Landscape Architect. All plants shall be installed in a pot of equivalent overall form, height and branching habit, flower/leaf and fruit color and time of bloom.
 - The Contractor shall locate and verify all utility line locations prior to staking and report any conflicts to the Landscape Architect.
 - All plants shall be staked out in their approximate location by the Contractor. The Contractor shall adjust the locations of these stakes as required by the Landscape Architect to account for subsurface utilities, other field conditions and to achieve design intent. Final locations must be approved by the Landscape Architect prior to planting.
 - No planting shall be installed before acceptance of rough grading of topsoil.
 - The rootballs of trees shall be planted 3" above adjacent finished grade. Excavate holes no deeper than the rootball of trees. Holes shall be at least 2' greater in diameter than root ball. Backfill planting hole with "planting mix". All plants which settle out of plumb or below finished grade shall be immediately replanted.
 - The rootballs of shrubs shall be planted 2" above adjacent finished grade. Excavate holes no deeper than the rootball of shrubs.
 - All shrubs, groundcovers and perennials shall be planted in continuous planting beds. All beds shall be excavated 12" and the soil shall be amended for topsoil. Remove all debris from excavated soil. Backfill beds with 12" of planting mix, before planting shrubs, perennials and groundcovers.
 - "Planting Mix" shall consist of 2 parts of topsoil saved from site excavations and 1 part compost. Thoroughly mix to create uniform blended mixture. If insufficient topsoil is available on the site, mix existing soil in a ratio of 1 part soil to 1 part compost. Remove all stones and debris larger than 2" from planting mix.
 - All beds as shown on the drawing shall be edged with a 4" trench neatly cut and backfilled with bark mulch. All beds shall be covered with no less than 2" depth settled bark mulch and no greater than 3" depth bark mulch.
 - All planting to be done under the full time supervision of a certified arborist, nurseryman or licensed Landscape Architect.
 - All plants are to be thoroughly watered after installation, at least twice within the first 24 hours.



October 19, 2015

17-21 Village Street, Somerville MA
 Illustrative Landscape Plan