



Welcome!

McGrath Highway (Route 28) / Mystic Avenue
(Route 38) Intersection Safety Improvements
Somerville | Project File No. 608562

PUBLIC INFORMATION MEETING

Virtual Presentation

December 2, 2020

Introduction

- **David Shedd, P.E.**
 - MassDOT Project Manager
 - David.shedd@dot.state.ma.us
- **Frank Suszynski**
 - MassDOT District 4
 - Frank.Suszynski@state.ma.us
- **Brad Rawson**
 - City of Somerville, Director of Transportation & Infrastructure
 - brawson@somervillema.gov
- **MassDOT Design Consultant**



- Tim McIntosh, P.E. – Project Manager
- TMcIntosh@VHB.com

PE17

Project History & Public Outreach

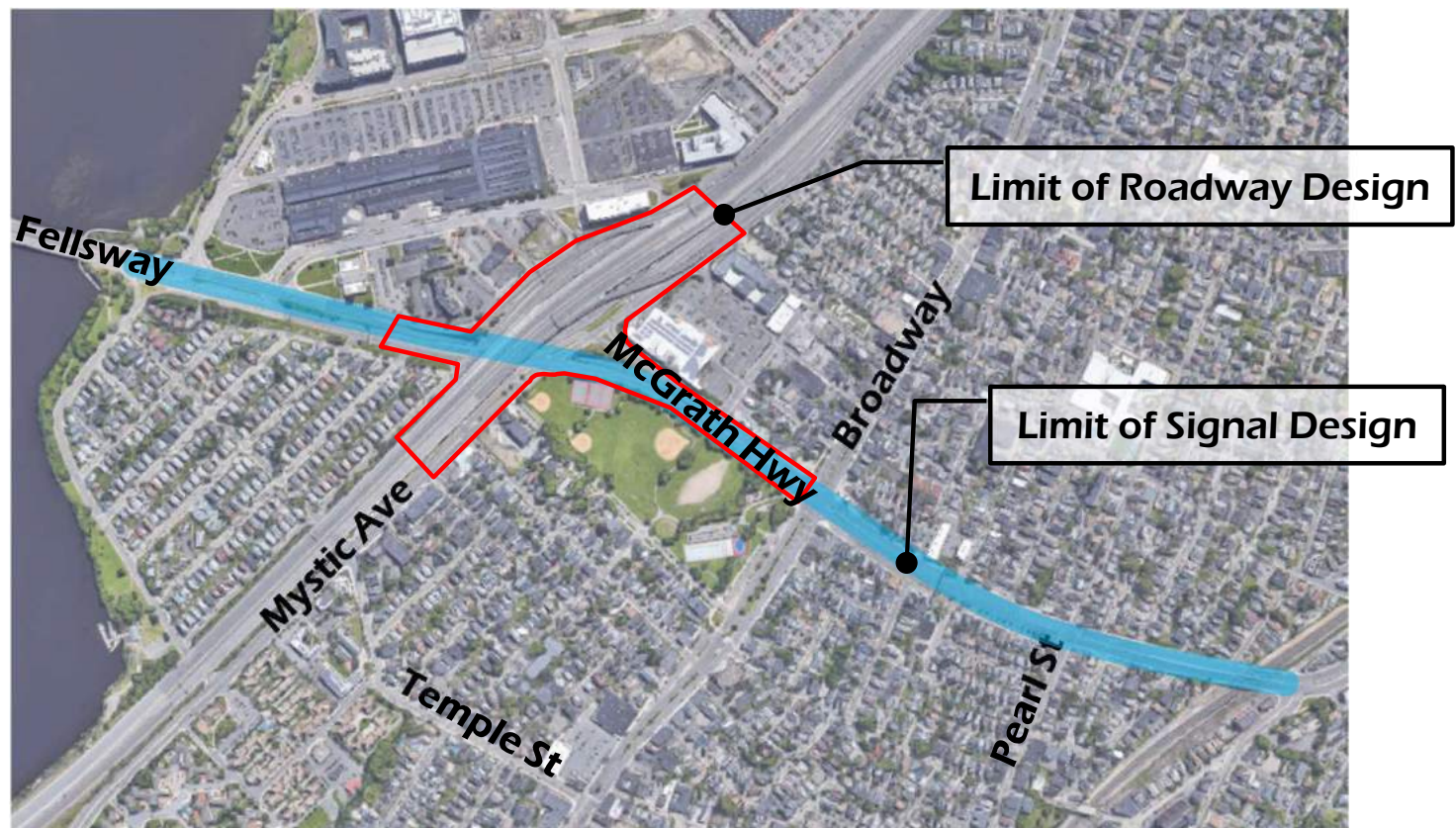
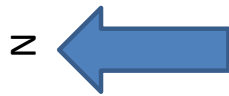
- January 2019 – Stakeholder Group Meeting
- October 2019 – Public Meeting
- December 2019 – Stakeholder Group Meeting
- February 2020 – Public Meeting



Project Area – Planning Study



Project Area – Design Project



**Why do we need
this project?**



Existing Issues

- Deficient Pedestrian Accommodation
- Deficient Bicycle Connections
- Inefficient Signal System
- Intersection Safety
- Vehicular Signage & Wayfinding
- Deficient Transit Accommodation

Existing Issues (cont.)

Mystic Ave @ Wheatland Street



Mystic Ave @ McGrath Hwy/Fellsway



McGrath Highway @ Blakeley Avenue



Project Goals

- Deficient Pedestrian Accommodation | Improve Pedestrian Accommodations
- Deficient Bicycle Connections | Incorporate Bicycle Treatments
- Inefficient Signal System | Replace Signal System
- Intersection Safety | Improve Intersection Safety
- Vehicular Signage & Wayfinding | Update Signage & Wayfinding
- Deficient Transit Accommodation | Upgrade Transit Access and Amenities

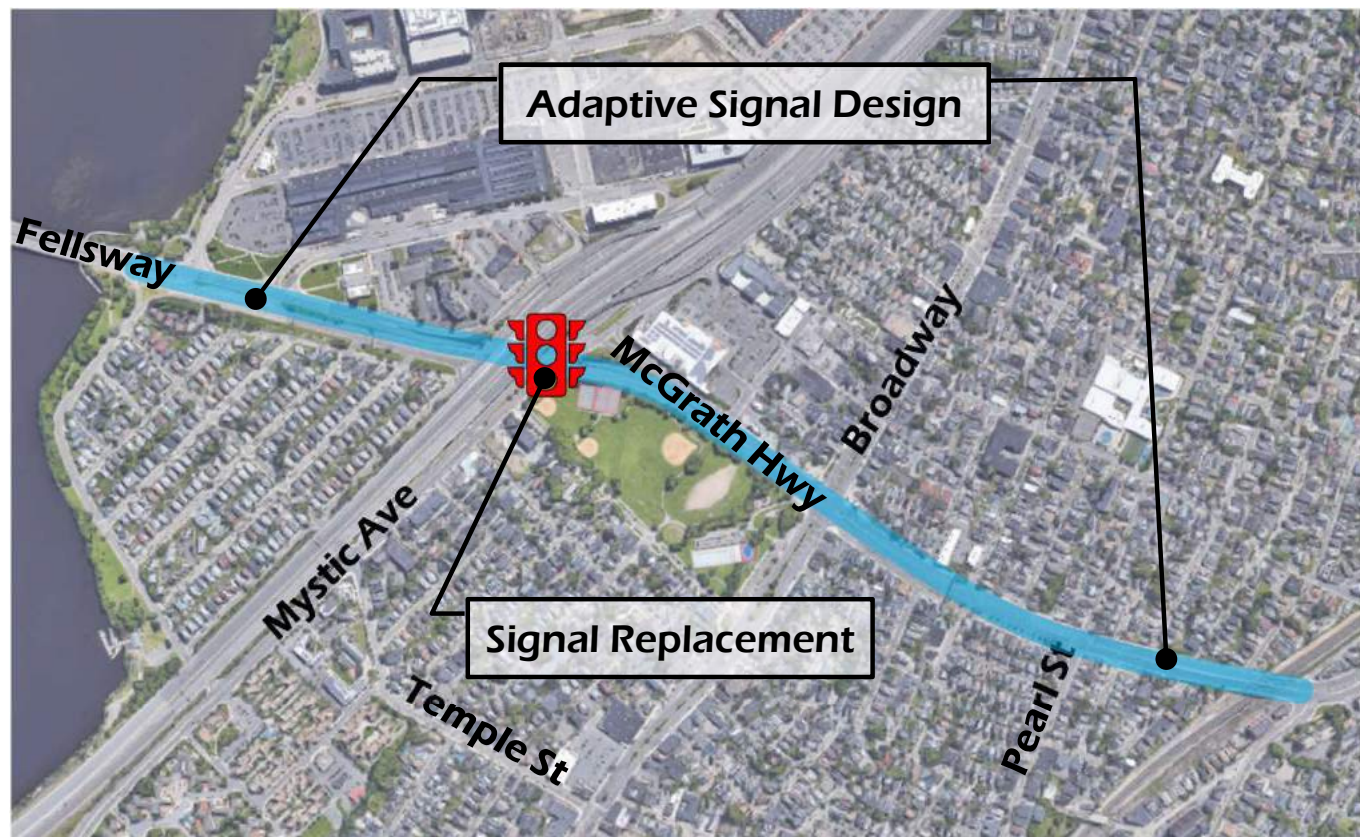
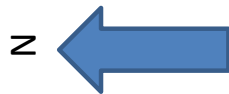
Project Scope

1. Reconstruct traffic signals and develop Adaptive Signal System
2. Reconstruct sidewalk and wheelchair ramps to be ADA / AAB compliant
 - a. Develop new pedestrian connections; remove unsafe connections
3. Bicycle improvements
 - a. Combination of Shared Use Paths, Separated Bike Lanes and Buffered Bike Lanes
4. Resurface pavement
5. New signage and pavement markings

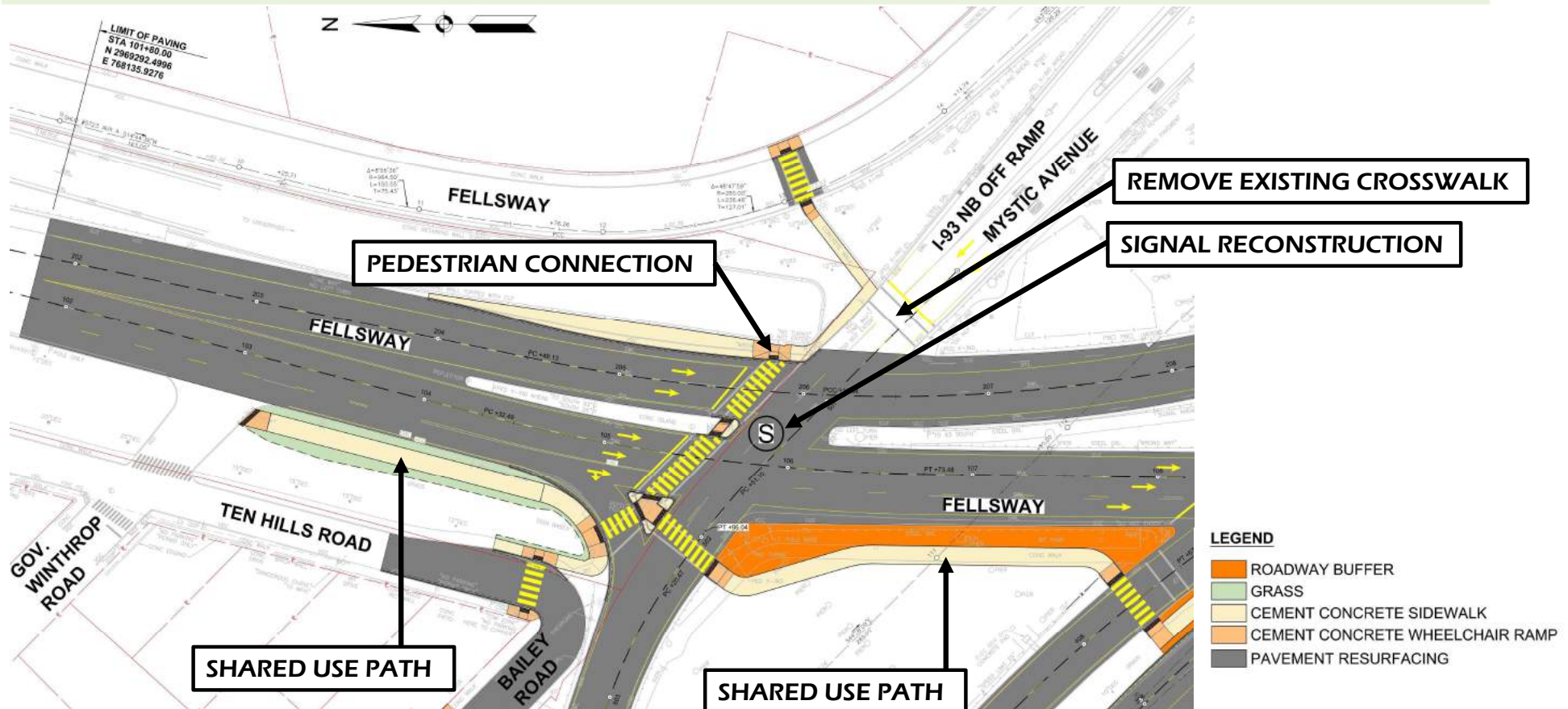
Project Area - Proposed Roadway Improvements



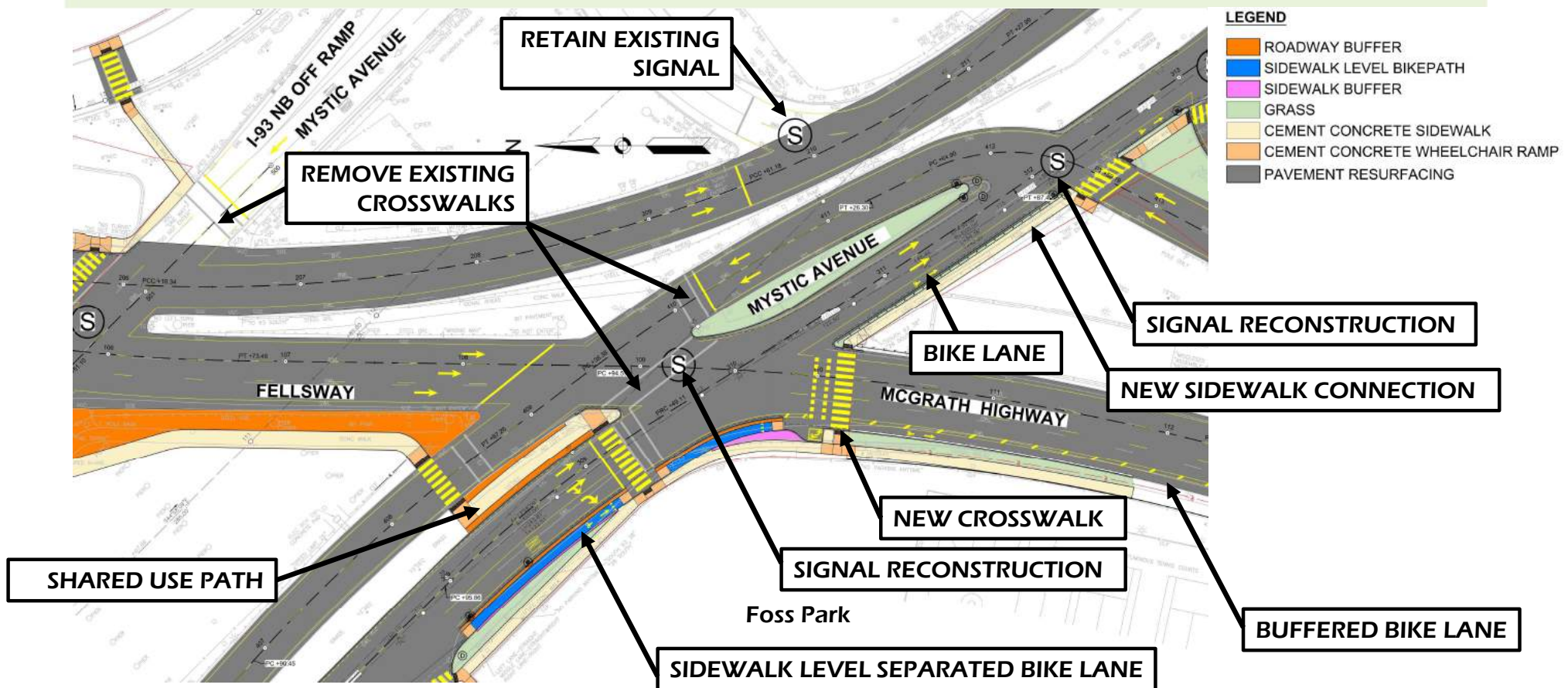
Project Area - Proposed Signal Improvements



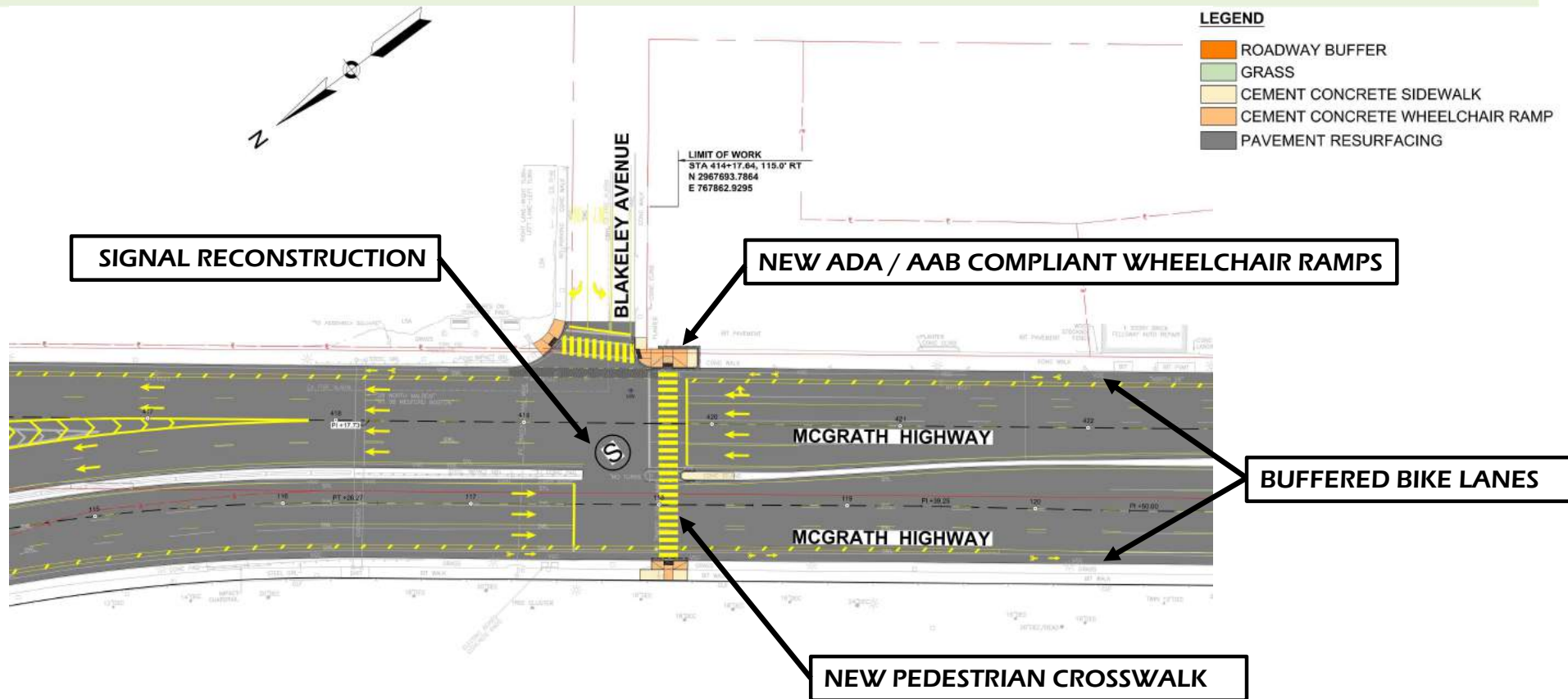
Proposed Improvements – Fellsway at Mystic Avenue NB



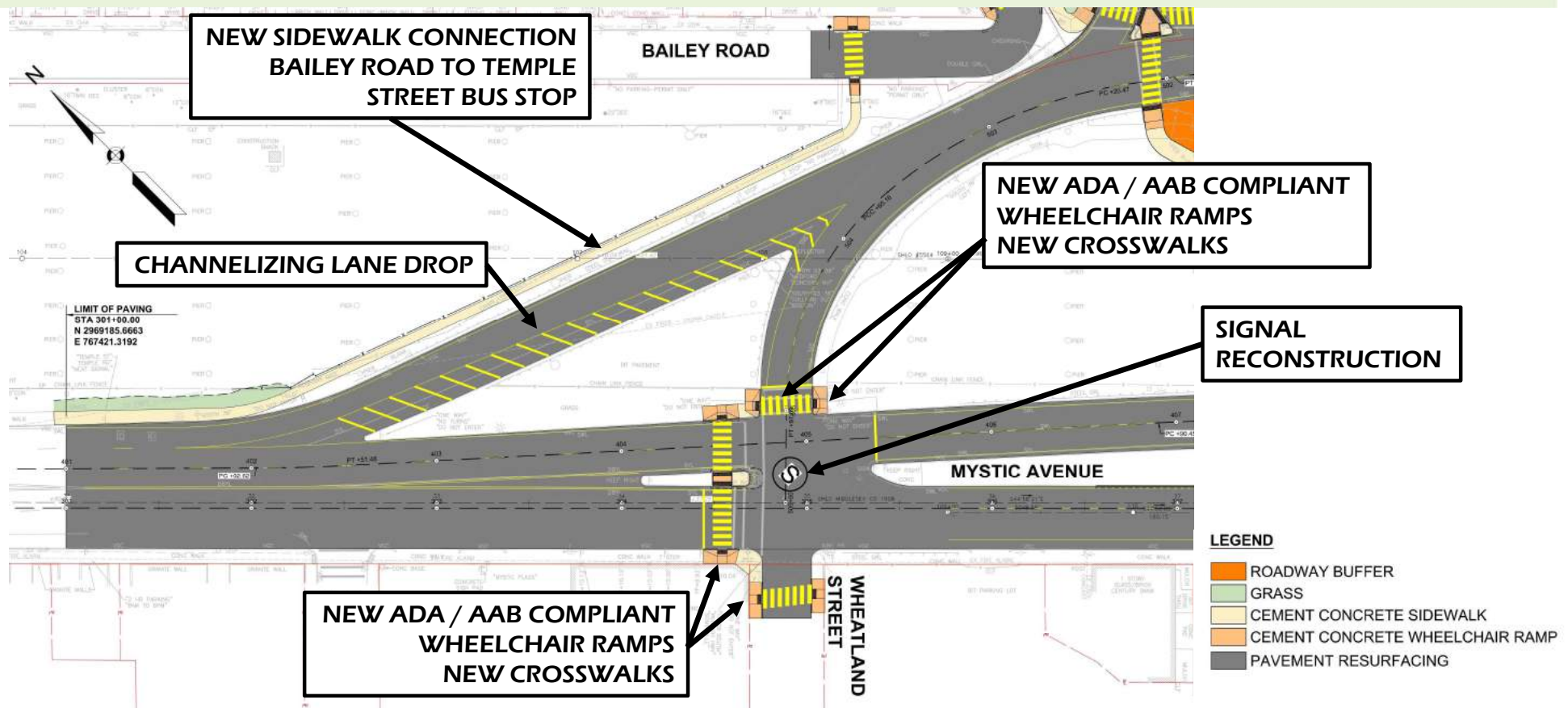
Proposed Improvements – Fellsway at Mystic Avenue SB



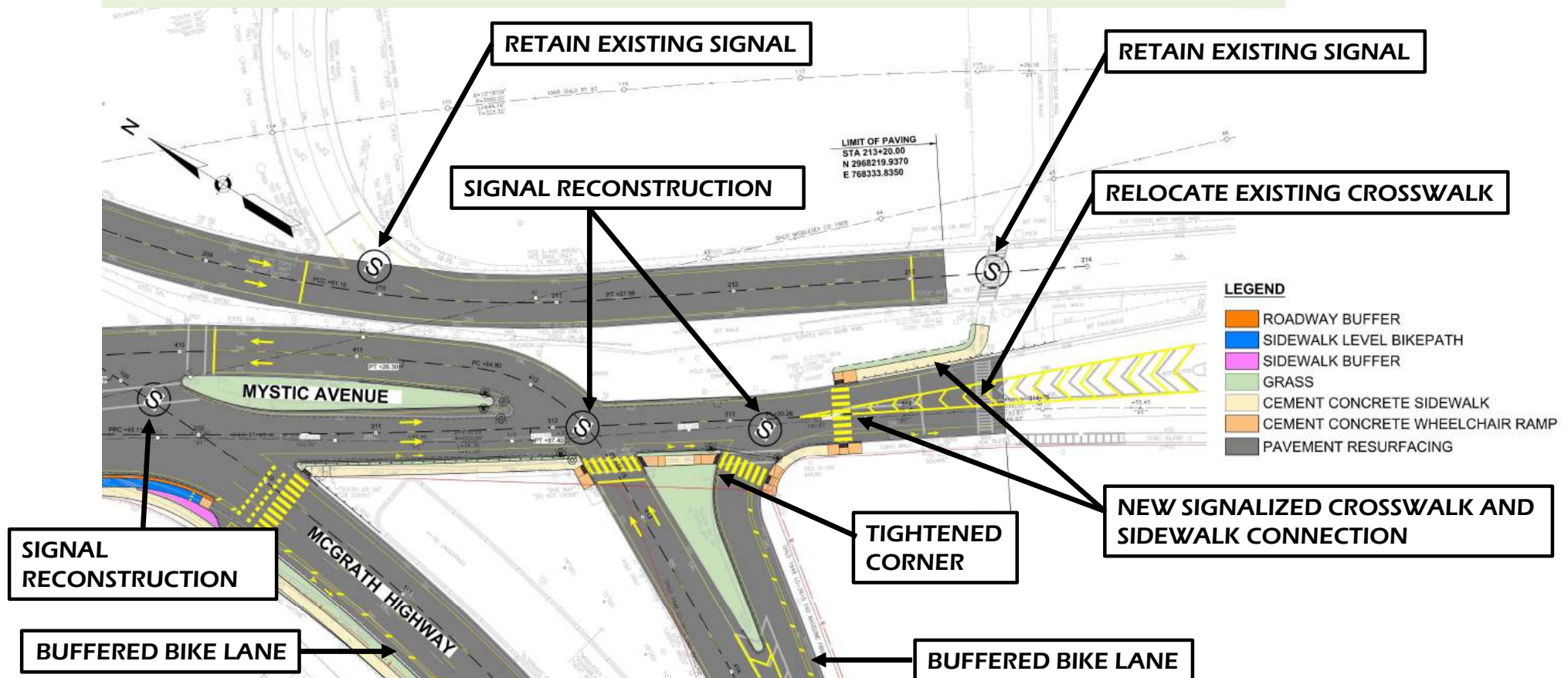
Proposed Improvements – McGrath Hwy at Blakeley Avenue



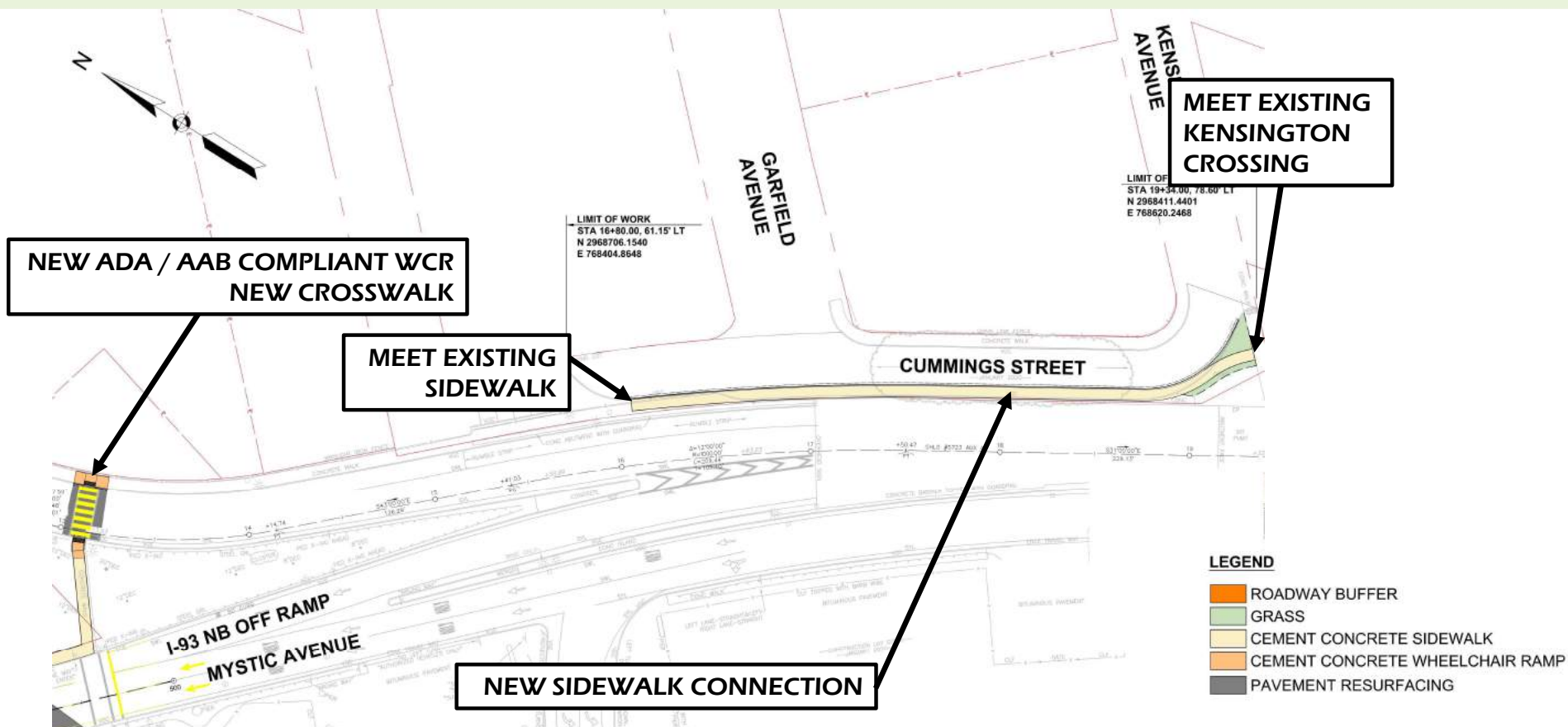
Proposed Improvements – Wheatland Street at Mystic Avenue



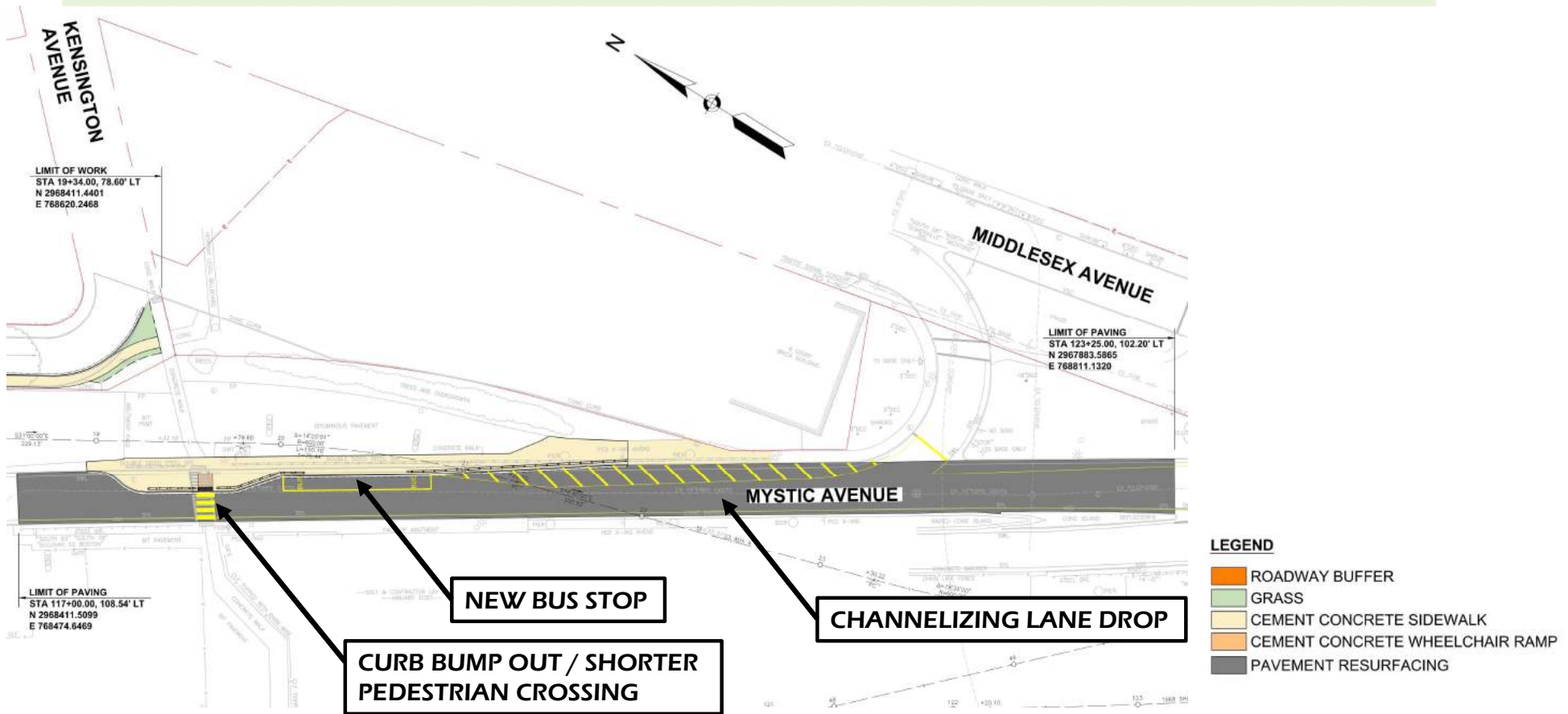
Proposed Improvements – Kensington Crossing



Proposed Improvements – Cummings Street Sidewalk Connection



Proposed Improvements – Mystic Avenue Bus Stop



Project Schedule



Next Steps/Meeting

1. Submit the Preliminary Design to MassDOT / City
2. Receive Design Review Comments
3. Resolve Comments / Comment Resolution Meeting
4. Schedule and Conduct Design Public Hearing
5. Develop Final Design
 1. 75% Design / MassDOT and City Review
 2. 100% Design / MassDOT and City Review
 3. Final Plans, Specifications and Estimate (PS&E)
6. Advertise Project for Construction

Contact Information



- Mail-in comment sheets
- Contact Person – David Shedd, MassDOT Project Manager
 - Email: david.shedd@state.ma.us
 - Phone: (857)368-9329



Thank You

McGrath Highway (Route 28) / Mystic Avenue (Route 38) Intersection
Safety Improvements

Somerville | Project File No. 608562

PUBLIC INFORMATION MEETING

Virtual Presentation

December 2, 2020